

IH 90: USH 14/61 TO USH 53 CONTINUOUS (24 HOUR) CLOSURE DIVERSION ROUTE: USH 53 TO USH 14/61	AUGUST
	Analyzed for 2009 Construction Season

SUMMARY OF TRAFFIC MODEL OUTPUT

SUNDAY WESTBOUND DIRECTION

TIME OF DAY	FLOWS AND CAPACITY IN VEH/HR							AVERAGE SPEEDS IN MPH							
	MAIN ROUTE		ALTERNATE ROUTE		SITE CAPA CITY	FLOW MAIN ROUTE	FLOW DIVER -TING	TOTAL DIVN FLOW	AV.DEL PER VEH (MINS)	AVERAGE QUEUE (VEH)	MAIN ROUTE		ALTERNATE ROUTE		
	DEMAND FLOW	PCT HEAVY	NORMAL FLOW	PCT HEAVY							WITHOUT WORK ZN	WITH WORK ZN	SITE	WITHOUT WORK ZN	WITH WORK ZN
MID-1 AM	205	0.0	187	7.0	1500	205	0	187	0.44	0	66.0	57.9	44.6	16.3	16.3
1-2 AM	138	0.0	125	7.0	1500	138	0	125	0.44	0	66.1	58.1	45.0	18.3	18.3
2-3 AM	109	0.0	99	7.0	1500	109	0	99	0.43	0	66.2	58.2	45.1	19.1	19.1
3-4 AM	96	0.0	88	7.0	1500	96	0	88	0.43	0	66.2	58.2	45.1	19.5	19.5
4-5 AM	87	0.0	80	7.0	1500	87	0	80	0.43	0	66.2	58.3	45.1	19.7	19.7
5-6 AM	99	0.0	91	7.0	1500	99	0	91	0.43	0	66.2	58.2	45.1	19.4	19.4
6-7 AM	131	0.0	120	7.0	1500	131	0	120	0.44	0	66.1	58.2	45.0	18.4	18.4
7-8 AM	294	0.0	269	7.0	1500	294	0	269	0.45	0	65.8	57.7	44.3	13.6	13.6
8-9 AM	440	0.0	403	7.0	1500	440	0	403	0.47	0	65.6	57.3	43.7	9.3	9.3
9-10 AM	693	0.0	634	7.0	1500	693	0	634	0.49	0	65.1	56.5	42.8	7.5	7.5
10-11 AM	1078	0.0	986	7.0	1500	1078	0	986+	0.53	0	64.4	55.4	41.4	5.6	5.6
11A-NOON	1447	0.0	1324	7.0	1499	1447	0	1324+	0.95	0	63.7	49.4	32.0	5.6	5.6
NOON-1PM	1503	0.0	1375	7.0	1499	1503	0	1375+	1.11	2	63.6	47.6	30.9	5.6	5.6
1-2 PM	1604	0.0	1468	7.0	1500	1604	0	1468+	2.99	57	63.4	33.3	30.8	5.6	5.6
2-3 PM	1688	0.0	1545	7.0	1500	1688	0	1545+	8.29	204	63.2	18.1	30.8	5.6	5.6
3-4 PM	1751	0.0	1602	7.0	1500	1751	0	1602+	16.58	427	63.1	10.9	30.8	5.6	5.7
4-5 PM	1730	0.0	1582	7.0	1500	1730	0	1582+	25.95	675	63.2	8.7	30.8	5.6	6.0
5-6 PM	1546	0.0	1414	7.0	1500	1546	0	1414+	31.38	819	63.5	8.0	30.8	5.6	6.3
6-7 PM	1346	0.0	1231	7.0	1500	1346	0	1231+	29.41	766	63.9	8.3	30.8	5.6	6.1
7-8 PM	1137	0.0	1041	7.0	1499	1137	0	1041+	19.54	510	64.3	10.0	30.9	5.6	5.8
8-9 PM	865	0.0	791	7.0	1499	865	0	791+	2.14	84	64.8	39.0	41.0	6.3	6.3
9-10 PM	697	0.0	638	7.0	1500	697	0	638	0.49	0	65.1	56.5	42.8	7.5	7.5
10-11 PM	459	0.0	419	7.0	1500	459	0	419	0.47	0	65.5	57.2	43.7	9.2	9.2
11PM-MID	283	0.0	258	7.0	1500	283	0	258	0.45	0	65.9	57.7	44.3	13.9	13.9

+ INDICATES DIVERSION FLOW EXCEEDS USER-SPECIFIED WARNING LIMIT

----- SITE BREAKDOWN DELAYS -----	
BREAKDOWN DURATION (MINS)	0
RANGE OF QUEUE DELAY - MIN	0.0
(VEH-H) MAX	0.0
RANGE OF DIVN DELAY - MIN	0.0
(VEH-H) MAX	0.0
AV BREAKDOWNS PER DAY	0.00
AV QUEUE DELAY/DAY (VEH-H)	0.0
AV DIVN DELAY/DAY (VEH-H)	0.0
AV TOTAL DELAY/DAY (VEH-H)	0.0

----- SITE ACCIDENT DELAYS -----	
ACCIDENT DURATION (MINS)	0
RANGE OF QUEUE DELAY - MIN	0.0
(VEH-H) MAX	0.0
RANGE OF DIVN DELAY - MIN	0.0
(VEH-H) MAX	0.0
AV ACCIDENTS PER DAY	0.00
AV QUEUE DELAY/DAY (VEH-H)	0.0
AV DIVN DELAY/DAY (VEH-H)	0.0
AV TOTAL DELAY/DAY (VEH-H)	0.0

AVERAGE ACCIDENT NUMBERS (PIA/DAY)	
MAIN ROUTE WITHOUT WORKS	0.0108
MAIN ROUTE WITH WORKS	0.0095
DIVERSION	0.1966

PIA: Personal Injury Accidents

IMPACTS ON ROAD USERS	
ROAD USER COSTS PER DAY (DOLLARS)	\$59,506
CONGESTED HOURS PER DAY*	5

*Delays Exceeding 15 Minutes

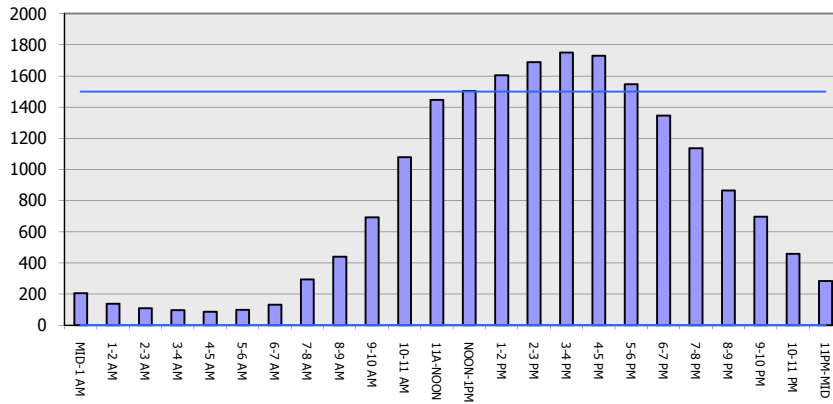
**IH 90: USH 14/61 TO USH 53
 CONTINUOUS (24 HOUR) CLOSURE
 DIVERSION ROUTE: USH 53 TO USH 14/61**

AUGUST
 Analyzed for 2009
 Construction Season

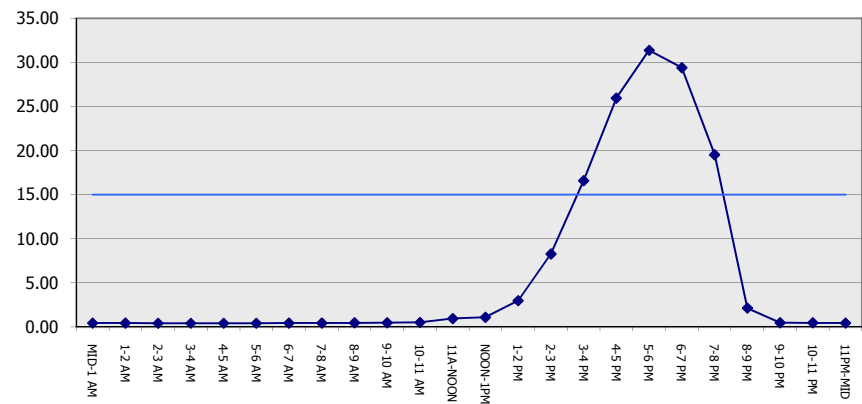
GRAPHICAL REPRESENTATION OF TRAFFIC MODEL INPUT AND OUTPUT

SUNDAY WESTBOUND DIRECTION

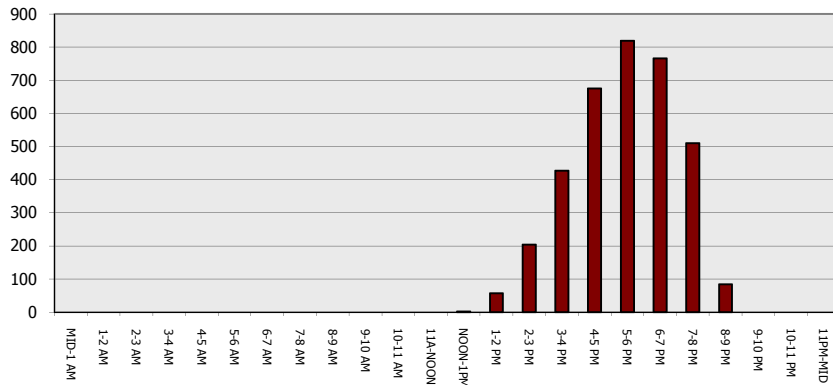
Main Route - Traffic Demand (Vehicles Per Hour)



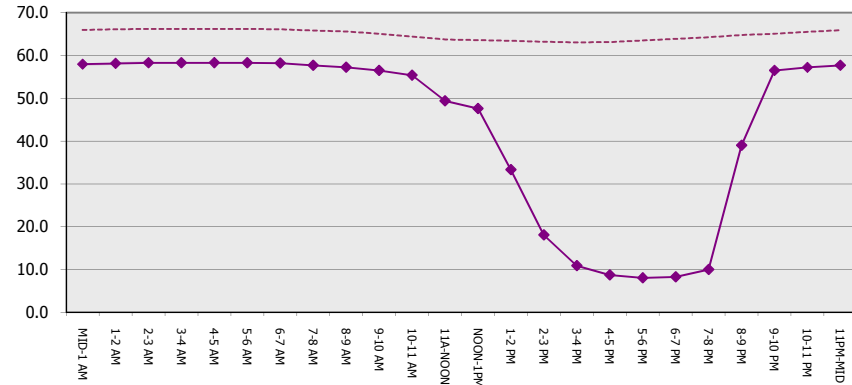
Main Route Average Delay Per Vehicle (Minutes)



Main Route - Average Queue Length (Vehicles)



Main Route - Average Speed (MPH)



IH 90: USH 14/61 TO USH 53 CONTINUOUS (24 HOUR) CLOSURE DIVERSION ROUTE: USH 53 TO USH 14/61	AUGUST
	Analyzed for 2009 Construction Season

SUMMARY OF TRAFFIC MODEL OUTPUT

SUNDAY EASTBOUND DIRECTION

TIME OF DAY	FLOWS AND CAPACITY IN VEH/HR								AVERAGE SPEEDS IN MPH						
	MAIN		DIVERSION		SITE CAPA CITY	FLOW MAIN ROUTE	FLOW DIVER -TING	TOTAL DIVN FLOW	AV.DEL PER VEH (MINS)	AVERAGE QUEUE (VEH)	MAIN ROUTE		SITE	ALTERNATE ROUTE	
	DEMAND FLOW	PCT HEAVY	NORMAL FLOW	PCT HEAVY							WITHOUT WORK ZN	WITH WORK ZN		WITHOUT WORK ZN	WITH WORK ZN
MID-1 AM	155	0.0	143	7.0	1500	155	0	143	0.44	0	66.1	58.1	44.8	17.7	17.7
1-2 AM	122	0.0	111	7.0	1500	122	0	111	0.43	0	66.1	58.2	45.0	18.8	18.8
2-3 AM	95	0.0	88	7.0	1500	95	0	88	0.43	0	66.2	58.2	45.1	19.5	19.5
3-4 AM	120	0.0	109	7.0	1500	120	0	109	0.43	0	66.1	58.2	45.0	18.8	18.8
4-5 AM	123	0.0	112	7.0	1500	123	0	112	0.43	0	66.1	58.2	45.0	18.7	18.7
5-6 AM	146	0.0	134	7.0	1500	146	0	134	0.44	0	66.1	58.1	44.9	18.0	18.0
6-7 AM	216	0.0	198	7.0	1500	216	0	198	0.44	0	66.0	57.9	44.6	15.9	15.9
7-8 AM	370	0.0	338	7.0	1500	370	0	338	0.46	0	65.7	57.4	44.0	11.3	11.3
8-9 AM	618	0.0	565	7.0	1500	618	0	565	0.48	0	65.2	56.7	43.0	8.0	8.0
9-10 AM	956	0.0	875	7.0	1500	956	0	875+	0.51	0	64.6	55.8	41.9	5.7	5.7
10-11 AM	1301	0.0	1190	7.0	1499	1301	0	1190+	0.76	0	64.0	51.9	35.6	5.6	5.6
11A-NOON	1514	0.0	1385	7.0	1499	1514	0	1385+	1.23	6	63.6	46.3	31.1	5.6	5.6
NOON-1PM	1603	0.0	1467	7.0	1500	1603	0	1467+	3.51	71	63.4	30.7	30.8	5.6	5.6
1-2 PM	1709	0.0	1563	7.0	1500	1709	0	1563+	9.18	229	63.2	16.8	30.8	5.6	5.6
2-3 PM	1705	0.0	1560	7.0	1499	1705	0	1560+	17.23	441	63.2	10.6	30.8	5.6	5.7
3-4 PM	1643	0.0	1503	7.0	1499	1643	0	1503+	23.88	618	63.3	9.0	30.8	5.6	6.0
4-5 PM	1572	0.0	1438	7.0	1499	1572	0	1438+	28.05	729	63.5	8.4	30.8	5.6	6.1
5-6 PM	1368	0.0	1251	7.0	1500	1368	0	1251+	27.05	702	63.8	8.5	30.8	5.6	6.1
6-7 PM	1194	0.0	1093	7.0	1499	1194	0	1093+	18.74	485	64.1	10.2	30.8	5.6	5.7
7-8 PM	909	0.0	832	7.0	1499	909	0	832+	2.37	94	64.7	37.4	40.1	6.0	6.0
8-9 PM	739	0.0	676	7.0	1500	739	0	676	0.49	0	65.0	56.4	42.6	7.2	7.2
9-10 PM	536	0.0	490	7.0	1500	536	0	490	0.47	0	65.4	56.9	43.3	8.6	8.6
10-11 PM	323	0.0	295	7.0	1500	323	0	295	0.45	0	65.8	57.6	44.2	12.7	12.7
11PM-MID	269	0.0	246	7.0	1500	269	0	246	0.45	0	65.9	57.8	44.4	14.3	14.3

+ INDICATES DIVERSION FLOW EXCEEDS USER-SPECIFIED WARNING LIMIT

----- SITE BREAKDOWN DELAYS -----	
BREAKDOWN DURATION (MINS)	0
RANGE OF QUEUE DELAY - MIN	0.0
(VEH-H) MAX	0.0
RANGE OF DIVN DELAY - MIN	0.0
(VEH-H) MAX	0.0
AV BREAKDOWNS PER DAY	0.00
AV QUEUE DELAY/DAY (VEH-H)	0.0
AV DIVN DELAY/DAY (VEH-H)	0.0
AV TOTAL DELAY/DAY (VEH-H)	0.0

----- SITE ACCIDENT DELAYS -----	
ACCIDENT DURATION (MINS)	0
RANGE OF QUEUE DELAY - MIN	0.0
(VEH-H) MAX	0.0
RANGE OF DIVN DELAY - MIN	0.0
(VEH-H) MAX	0.0
AV ACCIDENTS PER DAY	0.00
AV QUEUE DELAY/DAY (VEH-H)	0.0
AV DIVN DELAY/DAY (VEH-H)	0.0
AV TOTAL DELAY/DAY (VEH-H)	0.0

AVERAGE ACCIDENT NUMBERS (PIA/DAY)	
MAIN ROUTE WITHOUT WORKS	0.0107
MAIN ROUTE WITH WORKS	0.0095
DIVERSION	0.1953

PIA: Personal Injury Accidents

IMPACTS ON ROAD USERS	
ROAD USER COSTS PER DAY (DOLLARS)	\$56,797
CONGESTED HOURS PER DAY*	5

*Delays Exceeding 15 Minutes

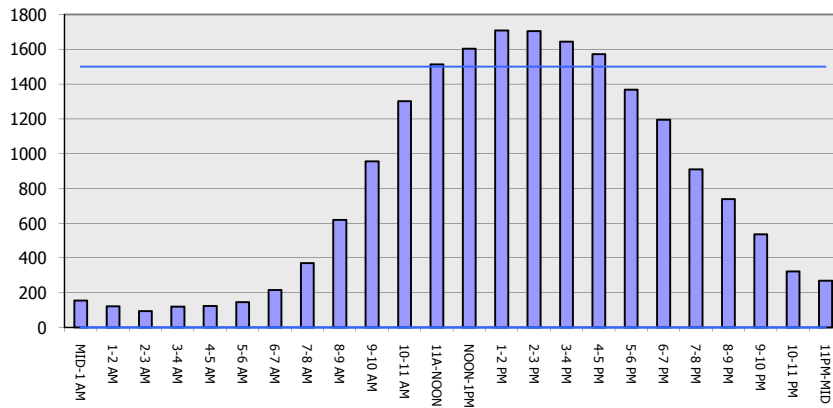
**IH 90: USH 14/61 TO USH 53
 CONTINUOUS (24 HOUR) CLOSURE
 DIVERSION ROUTE: USH 53 TO USH 14/61**

AUGUST
 Analyzed for 2009
 Construction Season

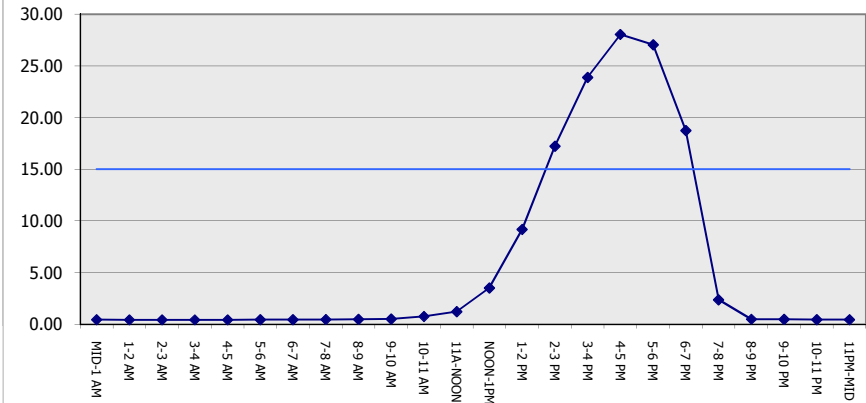
GRAPHICAL REPRESENTATION OF TRAFFIC MODEL INPUT AND OUTPUT

SUNDAY EASTBOUND DIRECTION

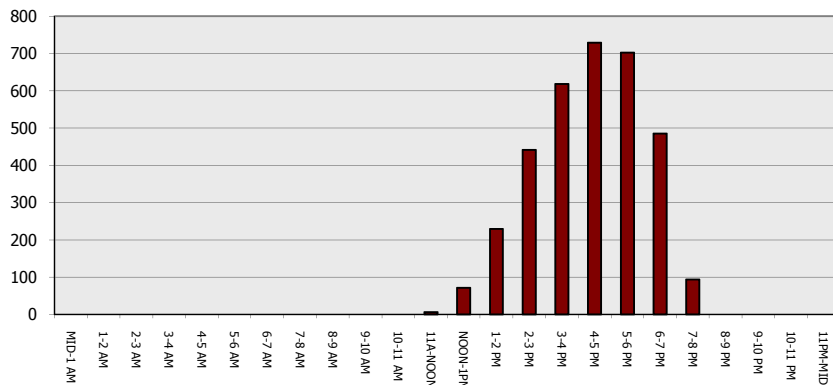
Main Route - Traffic Demand (Vehicles Per Hour)



Main Route Average Delay Per Vehicle (Minutes)



Main Route - Average Queue Length (Vehicles)



Main Route - Average Speed (MPH)

