

<b>IH 90: USH 14/61 TO USH 53</b> <b>CONTINUOUS (24 HOUR) CLOSURE</b> <b>DIVERSION ROUTE: USH 53 TO USH 14/61</b>	<b>AUGUST</b>
	Analyzed for 2009 Construction Season

**SUMMARY OF TRAFFIC MODEL OUTPUT**

SATURDAY WESTBOUND DIRECTION

TIME OF DAY	FLOWS AND CAPACITY IN VEH/HR								AVERAGE SPEEDS IN MPH						
	MAIN ROUTE		ALTERNATE ROUTE		SITE CAPA CITY	FLOW MAIN ROUTE	FLOW DIVER -TING	TOTAL DIVN FLOW	AV.DEL PER VEH (MINS)	AVERAGE QUEUE (VEH)	MAIN ROUTE		ALTERNATE ROUTE		
	DEMAND FLOW	PCT HEAVY	NORMAL FLOW	PCT HEAVY							WITHOUT WORK ZN	WITH WORK ZN	SITE	WITHOUT WORK ZN	WITH WORK ZN
MID-1 AM	249	0.0	227	7.0	1500	249	0	227	0.45	0	66.0	57.8	44.5	15.0	15.0
1-2 AM	193	0.0	176	7.0	1500	193	0	176	0.44	0	66.0	58.0	44.7	16.6	16.6
2-3 AM	178	0.0	162	7.0	1500	178	0	162	0.44	0	66.1	58.0	44.8	17.1	17.1
3-4 AM	182	0.0	165	7.0	1500	182	0	165	0.44	0	66.1	58.0	44.8	17.0	17.0
4-5 AM	170	0.0	156	7.0	1500	170	0	156	0.44	0	66.1	58.1	44.8	17.3	17.3
5-6 AM	214	0.0	196	7.0	1500	214	0	196	0.44	0	66.0	57.9	44.6	16.0	16.0
6-7 AM	308	0.0	282	7.0	1500	308	0	282	0.45	0	65.8	57.6	44.3	13.2	13.2
7-8 AM	474	0.0	434	7.0	1500	474	0	434	0.47	0	65.5	57.1	43.6	9.1	9.1
8-9 AM	725	0.0	664	7.0	1500	725	0	664	0.49	0	65.0	56.4	42.7	7.3	7.3
9-10 AM	1121	0.0	1026	7.0	1500	1121	0	1026+	0.53	0	64.3	55.3	41.2	5.6	5.6
10-11 AM	1408	0.0	1288	7.0	1500	1408	0	1288+	0.91	0	63.8	50.0	32.8	5.6	5.6
11A-NOON	1458	0.0	1334	7.0	1500	1458	0	1334+	0.97	0	63.7	49.2	31.7	5.6	5.6
NOON-1PM	1418	0.0	1297	7.0	1500	1418	0	1297+	0.92	0	63.7	49.8	32.5	5.6	5.6
1-2 PM	1274	0.0	1165	7.0	1500	1274	0	1165+	0.73	0	64.0	52.3	36.2	5.6	5.6
2-3 PM	1214	0.0	1110	7.0	1500	1214	0	1110+	0.66	0	64.1	53.4	38.0	5.6	5.6
3-4 PM	1111	0.0	1016	7.0	1500	1111	0	1016+	0.53	0	64.3	55.3	41.3	5.6	5.6
4-5 PM	1060	0.0	970	7.0	1500	1060	0	970+	0.52	0	64.4	55.5	41.5	5.6	5.6
5-6 PM	954	0.0	872	7.0	1500	954	0	872+	0.51	0	64.6	55.8	41.9	5.7	5.7
6-7 PM	814	0.0	745	7.0	1500	814	0	745+	0.50	0	64.9	56.1	42.4	6.6	6.6
7-8 PM	678	0.0	621	7.0	1500	678	0	621	0.49	0	65.1	56.6	42.8	7.6	7.6
8-9 PM	554	0.0	507	7.0	1500	554	0	507	0.48	0	65.3	56.9	43.3	8.5	8.5
9-10 PM	482	0.0	441	7.0	1500	482	0	441	0.47	0	65.5	57.1	43.6	9.0	9.0
10-11 PM	390	0.0	357	7.0	1500	390	0	357	0.46	0	65.6	57.4	43.9	10.7	10.7
11PM-MID	259	0.0	237	7.0	1500	259	0	237	0.45	0	65.9	57.8	44.5	14.7	14.7

+ INDICATES DIVERSION FLOW EXCEEDS USER-SPECIFIED WARNING LIMIT

*----- SITE BREAKDOWN DELAYS -----*	
BREAKDOWN DURATION (MINS)	0
RANGE OF QUEUE DELAY - MIN	0.0
(VEH-H) MAX	0.0
RANGE OF DIVN DELAY - MIN	0.0
(VEH-H) MAX	0.0
AV BREAKDOWNS PER DAY	0.00
AV QUEUE DELAY/DAY (VEH-H)	0.0
AV DIVN DELAY/DAY (VEH-H)	0.0
AV TOTAL DELAY/DAY (VEH-H)	0.0

*----- SITE ACCIDENT DELAYS -----*	
ACCIDENT DURATION (MINS)	0
RANGE OF QUEUE DELAY - MIN	0.0
(VEH-H) MAX	0.0
RANGE OF DIVN DELAY - MIN	0.0
(VEH-H) MAX	0.0
AV ACCIDENTS PER DAY	0.00
AV QUEUE DELAY/DAY (VEH-H)	0.0
AV DIVN DELAY/DAY (VEH-H)	0.0
AV TOTAL DELAY/DAY (VEH-H)	0.0

AVERAGE ACCIDENT NUMBERS (PIA/DAY)	
MAIN ROUTE WITHOUT WORKS	0.0094
MAIN ROUTE WITH WORKS	0.0083
DIVERSION	0.1708

PIA: Personal Injury Accidents

IMPACTS ON ROAD USERS	
ROAD USER COSTS PER DAY ( DOLLARS)	\$2,785
CONGESTED HOURS PER DAY*	0

\*Delays Exceeding 15 Minutes

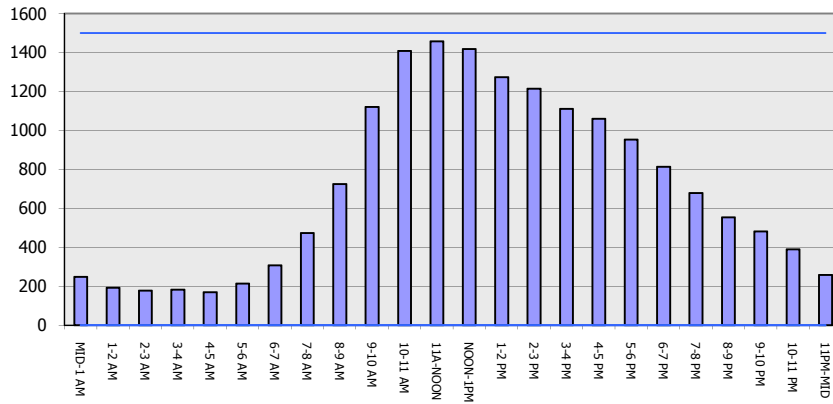
**IH 90: USH 14/61 TO USH 53  
CONTINUOUS (24 HOUR) CLOSURE  
DIVERSION ROUTE: USH 53 TO USH 14/61**

**AUGUST**  
Analyzed for 2009  
Construction Season

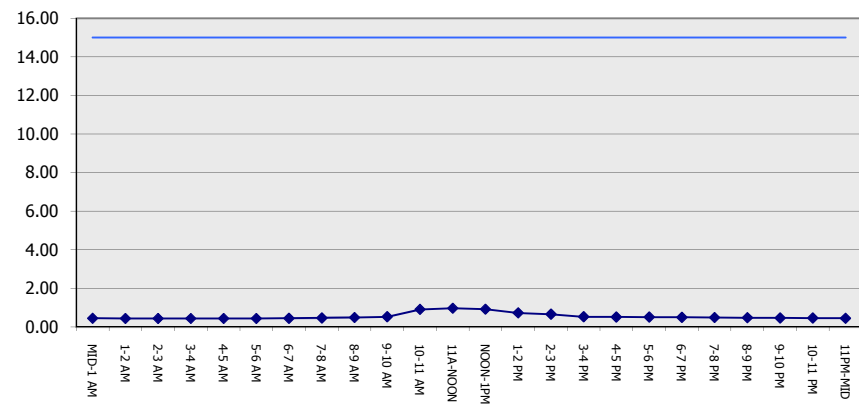
**GRAPHICAL REPRESENTATION OF TRAFFIC MODEL INPUT AND OUTPUT**

**SATURDAY WESTBOUND DIRECTION**

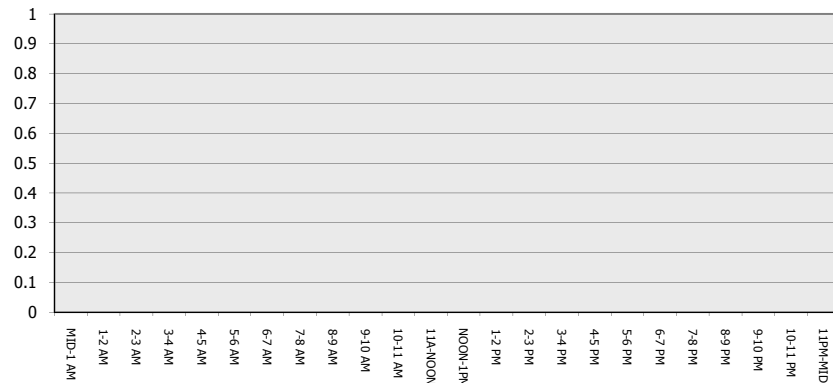
**Main Route - Traffic Demand (Vehicles Per Hour)**



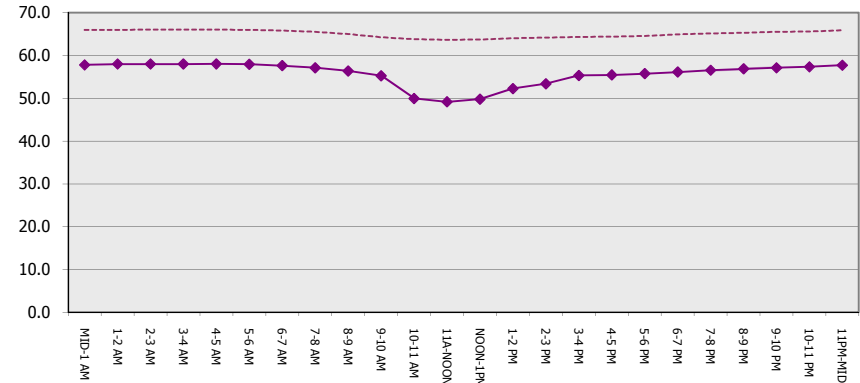
**Main Route Average Delay Per Vehicle (Minutes)**



**Main Route - Average Queue Length (Vehicles)**



**Main Route - Average Speed (MPH)**



<b>IH 90: USH 14/61 TO USH 53</b> <b>CONTINUOUS (24 HOUR) CLOSURE</b> <b>DIVERSION ROUTE: USH 53 TO USH 14/61</b>	<b>AUGUST</b>
	Analyzed for 2009 Construction Season

**SUMMARY OF TRAFFIC MODEL OUTPUT**

SATURDAY EASTBOUND DIRECTION

TIME OF DAY	FLOWS AND CAPACITY IN VEH/HR								AVERAGE SPEEDS IN MPH						
	MAIN		DIVERSION		SITE CAPA CITY	FLOW MAIN ROUTE	FLOW DIVER -TING	TOTAL DIVN FLOW	AV.DEL PER VEH (MINS)	AVERAGE QUEUE (VEH)	MAIN ROUTE		SITE	ALTERNATE ROUTE	
	DEMAND FLOW	PCT HEAVY	NORMAL FLOW	PCT HEAVY							WITHOUT WORK ZN	WITH WORK ZN		WITHOUT WORK ZN	WITH WORK ZN
MID-1 AM	222	0.0	203	7.0	1500	222	0	203	0.44	0	66.0	57.9	44.6	15.7	15.7
1-2 AM	145	0.0	133	7.0	1500	145	0	133	0.44	0	66.1	58.1	44.9	18.0	18.0
2-3 AM	136	0.0	124	7.0	1500	136	0	124	0.44	0	66.1	58.1	45.0	18.3	18.3
3-4 AM	161	0.0	147	7.0	1500	161	0	147	0.44	0	66.1	58.1	44.8	17.6	17.6
4-5 AM	162	0.0	149	7.0	1500	162	0	149	0.44	0	66.1	58.1	44.8	17.5	17.5
5-6 AM	212	0.0	194	7.0	1500	212	0	194	0.44	0	66.0	57.9	44.6	16.0	16.0
6-7 AM	369	0.0	337	7.0	1500	369	0	337	0.46	0	65.7	57.4	44.0	11.4	11.4
7-8 AM	510	0.0	467	7.0	1500	510	0	467	0.47	0	65.5	57.0	43.5	8.8	8.8
8-9 AM	876	0.0	801	7.0	1500	876	0	801+	0.51	0	64.8	56.0	42.1	6.2	6.2
9-10 AM	1197	0.0	1095	7.0	1500	1197	0	1095+	0.63	0	64.1	53.8	38.6	5.6	5.6
10-11 AM	1457	0.0	1332	7.0	1500	1457	0	1332+	0.97	0	63.7	49.2	31.7	5.6	5.6
11A-NOON	1396	0.0	1277	7.0	1500	1396	0	1277+	0.89	0	63.8	50.2	33.0	5.6	5.6
NOON-1PM	1306	0.0	1195	7.0	1500	1306	0	1195+	0.77	0	64.0	51.7	35.3	5.6	5.6
1-2 PM	1288	0.0	1178	7.0	1500	1288	0	1178+	0.75	0	64.0	52.0	35.8	5.6	5.6
2-3 PM	1143	0.0	1047	7.0	1500	1143	0	1047+	0.56	0	64.3	54.8	40.4	5.6	5.6
3-4 PM	1069	0.0	978	7.0	1500	1069	0	978+	0.53	0	64.4	55.5	41.4	5.6	5.6
4-5 PM	981	0.0	897	7.0	1500	981	0	897+	0.52	0	64.6	55.7	41.7	5.6	5.6
5-6 PM	931	0.0	852	7.0	1500	931	0	852+	0.51	0	64.6	55.8	41.9	5.8	5.8
6-7 PM	793	0.0	725	7.0	1500	793	0	725+	0.50	0	64.9	56.2	42.4	6.8	6.8
7-8 PM	665	0.0	608	7.0	1500	665	0	608	0.49	0	65.1	56.6	42.9	7.7	7.7
8-9 PM	554	0.0	506	7.0	1500	554	0	506	0.48	0	65.3	56.9	43.3	8.5	8.5
9-10 PM	465	0.0	425	7.0	1500	465	0	425	0.47	0	65.5	57.2	43.7	9.1	9.1
10-11 PM	328	0.0	301	7.0	1500	328	0	301	0.45	0	65.8	57.6	44.2	12.5	12.5
11PM-MID	202	0.0	185	7.0	1500	202	0	185	0.44	0	66.0	57.9	44.6	16.3	16.3

+ INDICATES DIVERSION FLOW EXCEEDS USER-SPECIFIED WARNING LIMIT

*----- SITE BREAKDOWN DELAYS -----*	
BREAKDOWN DURATION (MINS)	0
RANGE OF QUEUE DELAY - MIN	0.0
(VEH-H) MAX	0.0
RANGE OF DIVN DELAY - MIN	0.0
(VEH-H) MAX	0.0
AV BREAKDOWNS PER DAY	0.00
AV QUEUE DELAY/DAY (VEH-H)	0.0
AV DIVN DELAY/DAY (VEH-H)	0.0
AV TOTAL DELAY/DAY (VEH-H)	0.0

*----- SITE ACCIDENT DELAYS -----*	
ACCIDENT DURATION (MINS)	0
RANGE OF QUEUE DELAY - MIN	0.0
(VEH-H) MAX	0.0
RANGE OF DIVN DELAY - MIN	0.0
(VEH-H) MAX	0.0
AV ACCIDENTS PER DAY	0.00
AV QUEUE DELAY/DAY (VEH-H)	0.0
AV DIVN DELAY/DAY (VEH-H)	0.0
AV TOTAL DELAY/DAY (VEH-H)	0.0

AVERAGE ACCIDENT NUMBERS (PIA/DAY)	
MAIN ROUTE WITHOUT WORKS	0.0092
MAIN ROUTE WITH WORKS	0.0081
DIVERSION	0.1676

PIA: Personal Injury Accidents

IMPACTS ON ROAD USERS	
ROAD USER COSTS PER DAY ( DOLLARS)	\$2,683
CONGESTED HOURS PER DAY*	0

\*Delays Exceeding 15 Minutes

**IH 90: USH 14/61 TO USH 53  
 CONTINUOUS (24 HOUR) CLOSURE  
 DIVERSION ROUTE: USH 53 TO USH 14/61**

**AUGUST**  
 Analyzed for 2009  
 Construction Season

**GRAPHICAL REPRESENTATION OF TRAFFIC MODEL INPUT AND OUTPUT**  
**SATURDAY EASTBOUND DIRECTION**

