

<b>IH 90: USH 14/61 TO USH 53</b> <b>CONTINUOUS (24 HOUR) CLOSURE</b> <b>DIVERSION ROUTE: USH 53 TO USH 14/61</b>	<b>AUGUST</b>
	Analyzed for 2009 Construction Season

**SUMMARY OF TRAFFIC MODEL OUTPUT**

MON-THUR                      WESTBOUND DIRECTION

TIME OF DAY	FLOWS AND CAPACITY IN VEH/HR										AVERAGE SPEEDS IN MPH				
	MAIN ROUTE		ALTERNATE ROUTE		SITE CAPA CITY	FLOW MAIN ROUTE	FLOW DIVER -TING	TOTAL DIVN FLOW	AV.DEL PER VEH (MINS)	AVERAGE QUEUE (VEH)	MAIN ROUTE		ALTERNATE ROUTE		
	DEMAND FLOW	PCT HEAVY	NORMAL FLOW	PCT HEAVY							WITHOUT WORK ZN	WITH WORK ZN	SITE	WITHOUT WORK ZN	WITH WORK ZN
MID-1 AM	206	0.0	189	7.0	1500	206	0	189	0.44	0	66.0	57.9	44.6	16.2	16.2
1-2 AM	154	0.0	141	7.0	1500	154	0	141	0.44	0	66.1	58.1	44.9	17.8	17.8
2-3 AM	155	0.0	142	7.0	1500	155	0	142	0.44	0	66.1	58.1	44.8	17.8	17.8
3-4 AM	159	0.0	146	7.0	1500	159	0	146	0.44	0	66.1	58.1	44.8	17.6	17.6
4-5 AM	217	0.0	199	7.0	1500	217	0	199	0.44	0	66.0	57.9	44.6	15.9	15.9
5-6 AM	323	0.0	295	7.0	1500	323	0	295	0.45	0	65.8	57.6	44.2	12.7	12.7
6-7 AM	496	0.0	454	7.0	1500	496	0	454	0.47	0	65.5	57.1	43.5	8.9	8.9
7-8 AM	696	0.0	637	7.0	1500	696	0	637	0.49	0	65.1	56.5	42.8	7.5	7.5
8-9 AM	859	0.0	786	7.0	1500	859	0	786+	0.51	0	64.8	56.0	42.2	6.3	6.3
9-10 AM	989	0.0	905	7.0	1500	989	0	905+	0.52	0	64.5	55.6	41.7	5.6	5.6
10-11 AM	1032	0.0	944	7.0	1500	1032	0	944+	0.52	0	64.5	55.6	41.5	5.6	5.6
11A-NOON	1065	0.0	974	7.0	1500	1065	0	974+	0.53	0	64.4	55.5	41.4	5.6	5.6
NOON-1PM	1079	0.0	987	7.0	1500	1079	0	987+	0.53	0	64.4	55.4	41.4	5.6	5.6
1-2 PM	1140	0.0	1043	7.0	1500	1140	0	1043+	0.56	0	64.3	54.8	40.4	5.6	5.6
2-3 PM	1250	0.0	1144	7.0	1500	1250	0	1144+	0.70	0	64.1	52.8	36.9	5.6	5.6
3-4 PM	1279	0.0	1171	7.0	1500	1279	0	1171+	0.74	0	64.0	52.2	36.1	5.6	5.6
4-5 PM	1321	0.0	1208	7.0	1500	1321	0	1208+	0.79	0	63.9	51.5	35.0	5.6	5.6
5-6 PM	1147	0.0	1050	7.0	1500	1147	0	1050+	0.57	0	64.3	54.7	40.2	5.6	5.6
6-7 PM	928	0.0	850	7.0	1500	928	0	850+	0.51	0	64.6	55.8	41.9	5.8	5.8
7-8 PM	744	0.0	681	7.0	1500	744	0	681	0.49	0	65.0	56.4	42.6	7.1	7.1
8-9 PM	603	0.0	551	7.0	1500	603	0	551	0.48	0	65.3	56.8	43.1	8.1	8.1
9-10 PM	496	0.0	454	7.0	1500	496	0	454	0.47	0	65.5	57.1	43.5	8.9	8.9
10-11 PM	380	0.0	348	7.0	1500	380	0	348	0.46	0	65.7	57.4	44.0	11.0	11.0
11PM-MID	269	0.0	245	7.0	1500	269	0	245	0.45	0	65.9	57.8	44.4	14.3	14.3

+ INDICATES DIVERSION FLOW EXCEEDS USER-SPECIFIED WARNING LIMIT

*----- SITE BREAKDOWN DELAYS -----*	
BREAKDOWN DURATION (MINS)	0
RANGE OF QUEUE DELAY - MIN	0.0
(VEH-H) MAX	0.0
RANGE OF DIVN DELAY - MIN	0.0
(VEH-H) MAX	0.0
AV BREAKDOWNS PER DAY	0.00
AV QUEUE DELAY/DAY (VEH-H)	0.0
AV DIVN DELAY/DAY (VEH-H)	0.0
AV TOTAL DELAY/DAY (VEH-H)	0.0

*----- SITE ACCIDENT DELAYS -----*	
ACCIDENT DURATION (MINS)	0
RANGE OF QUEUE DELAY - MIN	0.0
(VEH-H) MAX	0.0
RANGE OF DIVN DELAY - MIN	0.0
(VEH-H) MAX	0.0
AV ACCIDENTS PER DAY	0.00
AV QUEUE DELAY/DAY (VEH-H)	0.0
AV DIVN DELAY/DAY (VEH-H)	0.0
AV TOTAL DELAY/DAY (VEH-H)	0.0

AVERAGE ACCIDENT NUMBERS (PIA/DAY)	
MAIN ROUTE WITHOUT WORKS	0.0095
MAIN ROUTE WITH WORKS	0.0083
DIVERSION	0.1719

PIA: Personal Injury Accidents

IMPACTS ON ROAD USERS	
ROAD USER COSTS PER DAY ( DOLLARS)	\$1,943
CONGESTED HOURS PER DAY*	0

\*Delays Exceeding 15 Minutes

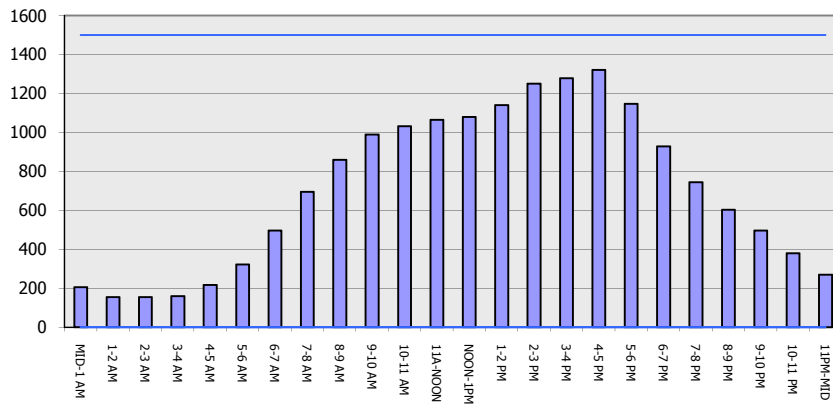
**IH 90: USH 14/61 TO USH 53  
 CONTINUOUS (24 HOUR) CLOSURE  
 DIVERSION ROUTE: USH 53 TO USH 14/61**

**AUGUST**  
 Analyzed for 2009  
 Construction Season

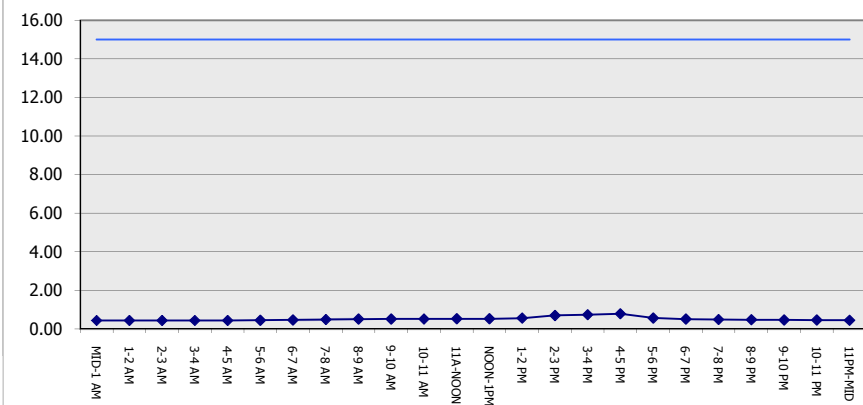
**GRAPHICAL REPRESENTATION OF TRAFFIC MODEL INPUT AND OUTPUT**

**MON-THUR WESTBOUND DIRECTION**

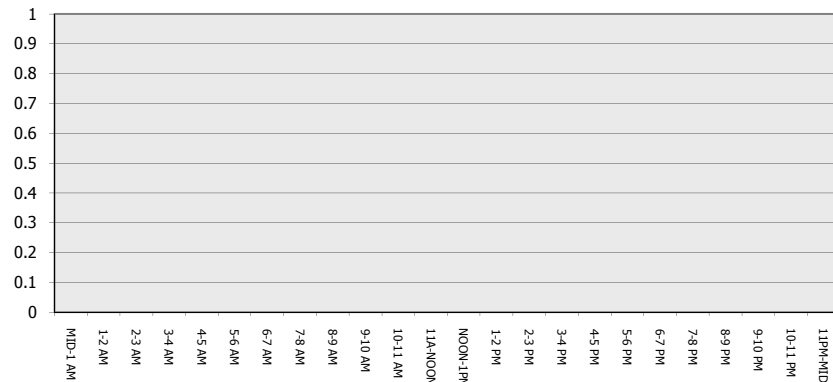
**Main Route - Traffic Demand (Vehicles Per Hour)**



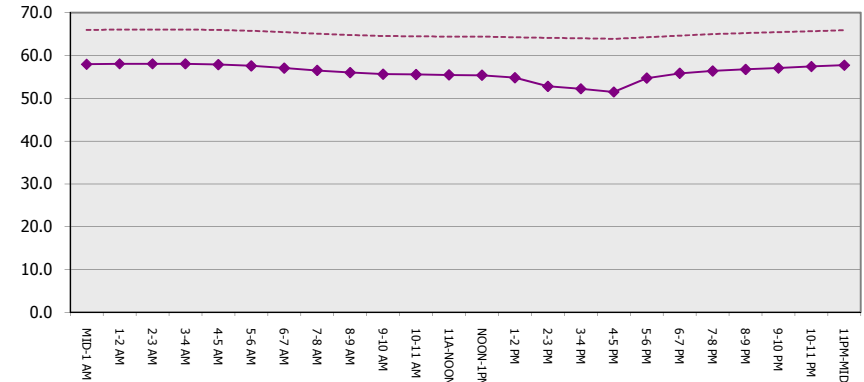
**Main Route Average Delay Per Vehicle (Minutes)**



**Main Route - Average Queue Length (Vehicles)**



**Main Route - Average Speed (MPH)**



<b>IH 90: USH 14/61 TO USH 53</b> <b>CONTINUOUS (24 HOUR) CLOSURE</b> <b>DIVERSION ROUTE: USH 53 TO USH 14/61</b>	<b>AUGUST</b>
	Analyzed for 2009 Construction Season

**SUMMARY OF TRAFFIC MODEL OUTPUT**

MON-THUR EASTBOUND DIRECTION

TIME OF DAY	FLOWS AND CAPACITY IN VEH/HR								AVERAGE SPEEDS IN MPH						
	MAIN		DIVERSION		SITE CAPA CITY	FLOW MAIN ROUTE	FLOW DIVER -TING	TOTAL DIVN FLOW	AV.DEL PER VEH (MINS)	AVERAGE QUEUE (VEH)	MAIN ROUTE		SITE	ALTERNATE ROUTE	
	DEMAND FLOW	PCT HEAVY	NORMAL FLOW	PCT HEAVY							WITHOUT WORK ZN	WITH WORK ZN		WITHOUT WORK ZN	WITH WORK ZN
MID-1 AM	175	0.0	160	7.0	1500	175	0	160	0.44	0	66.1	58.0	44.8	17.1	17.1
1-2 AM	132	0.0	121	7.0	1500	132	0	121	0.44	0	66.1	58.2	45.0	18.4	18.4
2-3 AM	144	0.0	132	7.0	1500	144	0	132	0.44	0	66.1	58.1	44.9	18.1	18.1
3-4 AM	197	0.0	179	7.0	1500	197	0	179	0.44	0	66.0	57.9	44.7	16.5	16.5
4-5 AM	253	0.0	231	7.0	1500	253	0	231	0.45	0	65.9	57.8	44.5	14.8	14.8
5-6 AM	430	0.0	394	7.0	1500	430	0	394	0.46	0	65.6	57.3	43.8	9.5	9.5
6-7 AM	654	0.0	599	7.0	1500	654	0	599	0.49	0	65.1	56.6	42.9	7.8	7.8
7-8 AM	825	0.0	755	7.0	1500	825	0	755+	0.50	0	64.8	56.1	42.3	6.6	6.6
8-9 AM	846	0.0	774	7.0	1500	846	0	774+	0.50	0	64.8	56.1	42.2	6.4	6.4
9-10 AM	970	0.0	888	7.0	1500	970	0	888+	0.52	0	64.6	55.7	41.8	5.6	5.6
10-11 AM	1049	0.0	959	7.0	1500	1049	0	959+	0.52	0	64.5	55.5	41.5	5.6	5.6
11A-NOON	1051	0.0	962	7.0	1500	1051	0	962+	0.52	0	64.4	55.5	41.5	5.6	5.6
NOON-1PM	1074	0.0	983	7.0	1500	1074	0	983+	0.53	0	64.4	55.5	41.4	5.6	5.6
1-2 PM	1161	0.0	1062	7.0	1500	1161	0	1062+	0.59	0	64.2	54.5	39.7	5.6	5.6
2-3 PM	1221	0.0	1116	7.0	1500	1221	0	1116+	0.66	0	64.1	53.3	37.8	5.6	5.6
3-4 PM	1216	0.0	1112	7.0	1500	1216	0	1112+	0.66	0	64.1	53.4	37.9	5.6	5.6
4-5 PM	1184	0.0	1082	7.0	1500	1184	0	1082+	0.62	0	64.1	54.0	39.0	5.6	5.6
5-6 PM	1105	0.0	1011	7.0	1500	1105	0	1011+	0.53	0	64.3	55.3	41.3	5.6	5.6
6-7 PM	862	0.0	789	7.0	1500	862	0	789+	0.51	0	64.8	56.0	42.2	6.3	6.3
7-8 PM	693	0.0	634	7.0	1500	693	0	634	0.49	0	65.1	56.5	42.8	7.5	7.5
8-9 PM	581	0.0	532	7.0	1500	581	0	532	0.48	0	65.3	56.8	43.2	8.3	8.3
9-10 PM	495	0.0	453	7.0	1500	495	0	453	0.47	0	65.5	57.1	43.5	8.9	8.9
10-11 PM	338	0.0	308	7.0	1500	338	0	308	0.46	0	65.8	57.6	44.2	12.3	12.3
11PM-MID	260	0.0	238	7.0	1500	260	0	238	0.45	0	65.9	57.8	44.5	14.6	14.6

+ INDICATES DIVERSION FLOW EXCEEDS USER-SPECIFIED WARNING LIMIT

*----- SITE BREAKDOWN DELAYS -----*	
BREAKDOWN DURATION (MINS)	0
RANGE OF QUEUE DELAY - MIN	0.0
(VEH-H) MAX	0.0
RANGE OF DIVN DELAY - MIN	0.0
(VEH-H) MAX	0.0
AV BREAKDOWNS PER DAY	0.00
AV QUEUE DELAY/DAY (VEH-H)	0.0
AV DIVN DELAY/DAY (VEH-H)	0.0
AV TOTAL DELAY/DAY (VEH-H)	0.0

*----- SITE ACCIDENT DELAYS -----*	
ACCIDENT DURATION (MINS)	0
RANGE OF QUEUE DELAY - MIN	0.0
(VEH-H) MAX	0.0
RANGE OF DIVN DELAY - MIN	0.0
(VEH-H) MAX	0.0
AV ACCIDENTS PER DAY	0.00
AV QUEUE DELAY/DAY (VEH-H)	0.0
AV DIVN DELAY/DAY (VEH-H)	0.0
AV TOTAL DELAY/DAY (VEH-H)	0.0

AVERAGE ACCIDENT NUMBERS (PIA/DAY)	
MAIN ROUTE WITHOUT WORKS	0.0094
MAIN ROUTE WITH WORKS	0.0083
DIVERSION	0.1711

PIA: Personal Injury Accidents

IMPACTS ON ROAD USERS	
ROAD USER COSTS PER DAY ( DOLLARS)	\$1,850
CONGESTED HOURS PER DAY*	0

\*Delays Exceeding 15 Minutes

**IH 90: USH 14/61 TO USH 53  
 CONTINUOUS (24 HOUR) CLOSURE  
 DIVERSION ROUTE: USH 53 TO USH 14/61**

**AUGUST**  
 Analyzed for 2009  
 Construction Season

**GRAPHICAL REPRESENTATION OF TRAFFIC MODEL INPUT AND OUTPUT**  
**MON-THUR EASTBOUND DIRECTION**

