

<b>IH 90: USH 14/61 TO USH 53</b> <b>CONTINUOUS (24 HOUR) CLOSURE</b> <b>DIVERSION ROUTE: USH 53 TO USH 14/61</b>	<b>MAY</b>
	Analyzed for 2009 Construction Season

**SUMMARY OF TRAFFIC MODEL OUTPUT**

SUNDAY WESTBOUND DIRECTION

TIME OF DAY	FLOWS AND CAPACITY IN VEH/HR						AVERAGE SPEEDS IN MPH								
	MAIN ROUTE		ALTERNATE ROUTE		SITE CAPA CITY	FLOW MAIN ROUTE	FLOW DIVER -TING	TOTAL DIVN FLOW	AV.DEL PER VEH (MINS)	AVERAGE QUEUE (VEH)	MAIN ROUTE		ALTERNATE ROUTE		
	DEMAND FLOW	PCT HEAVY	NORMAL FLOW	PCT HEAVY							WITHOUT WORK ZN	WITH WORK ZN	SITE	WITHOUT WORK ZN	WITH WORK ZN
MID-1 AM	181	0.0	165	7.0	1500	181	0	165	0.44	0	66.1	58.0	44.8	17.0	17.0
1-2 AM	96	0.0	89	7.0	1500	96	0	89	0.43	0	66.2	58.2	45.1	19.4	19.4
2-3 AM	67	0.0	61	7.0	1500	67	0	61	0.43	0	66.3	58.4	45.2	20.4	20.4
3-4 AM	55	0.0	50	7.0	1500	55	0	50	0.43	0	66.3	58.4	45.3	20.7	20.7
4-5 AM	75	0.0	69	7.0	1500	75	0	69	0.43	0	66.3	58.3	45.2	20.1	20.1
5-6 AM	69	0.0	63	7.0	1500	69	0	63	0.43	0	66.3	58.4	45.2	20.3	20.3
6-7 AM	123	0.0	112	7.0	1500	123	0	112	0.43	0	66.1	58.2	45.0	18.7	18.7
7-8 AM	191	0.0	175	7.0	1500	191	0	175	0.44	0	66.0	58.0	44.7	16.6	16.6
8-9 AM	355	0.0	325	7.0	1500	355	0	325	0.46	0	65.7	57.5	44.1	11.7	11.7
9-10 AM	597	0.0	546	7.0	1500	597	0	546	0.48	0	65.3	56.8	43.2	8.2	8.2
10-11 AM	819	0.0	749	7.0	1500	819	0	749+	0.50	0	64.8	56.1	42.4	6.6	6.6
11A-NOON	1112	0.0	1017	7.0	1500	1112	0	1017+	0.53	0	64.3	55.3	41.3	5.6	5.6
NOON-1PM	1115	0.0	1020	7.0	1500	1115	0	1020+	0.53	0	64.3	55.3	41.3	5.6	5.6
1-2 PM	1162	0.0	1063	7.0	1500	1162	0	1063+	0.59	0	64.2	54.5	39.7	5.6	5.6
2-3 PM	1231	0.0	1126	7.0	1500	1231	0	1126+	0.68	0	64.1	53.1	37.5	5.6	5.6
3-4 PM	1280	0.0	1171	7.0	1500	1280	0	1171+	0.74	0	64.0	52.2	36.0	5.6	5.6
4-5 PM	1319	0.0	1207	7.0	1500	1319	0	1207+	0.79	0	63.9	51.5	35.0	5.6	5.6
5-6 PM	1197	0.0	1095	7.0	1500	1197	0	1095+	0.63	0	64.1	53.8	38.6	5.6	5.6
6-7 PM	1074	0.0	983	7.0	1500	1074	0	983+	0.53	0	64.4	55.5	41.4	5.6	5.6
7-8 PM	1009	0.0	923	7.0	1500	1009	0	923+	0.52	0	64.5	55.6	41.7	5.6	5.6
8-9 PM	774	0.0	708	7.0	1500	774	0	708	0.50	0	65.0	56.3	42.5	6.9	6.9
9-10 PM	534	0.0	489	7.0	1500	534	0	489	0.47	0	65.4	56.9	43.4	8.6	8.6
10-11 PM	376	0.0	345	7.0	1500	376	0	345	0.46	0	65.7	57.4	44.0	11.1	11.1
11PM-MID	252	0.0	230	7.0	1500	252	0	230	0.45	0	65.9	57.8	44.5	14.8	14.8

+ INDICATES DIVERSION FLOW EXCEEDS USER-SPECIFIED WARNING LIMIT

*----- SITE BREAKDOWN DELAYS -----*	
BREAKDOWN DURATION (MINS)	0
RANGE OF QUEUE DELAY - MIN (VEH-H) MAX	0.0
RANGE OF DIVN DELAY - MIN (VEH-H) MAX	0.0
AV BREAKDOWNS PER DAY	0.00
AV QUEUE DELAY/DAY (VEH-H)	0.0
AV DIVN DELAY/DAY (VEH-H)	0.0
AV TOTAL DELAY/DAY (VEH-H)	0.0

*----- SITE ACCIDENT DELAYS -----*	
ACCIDENT DURATION (MINS)	0
RANGE OF QUEUE DELAY - MIN (VEH-H) MAX	0.0
RANGE OF DIVN DELAY - MIN (VEH-H) MAX	0.0
AV ACCIDENTS PER DAY	0.00
AV QUEUE DELAY/DAY (VEH-H)	0.0
AV DIVN DELAY/DAY (VEH-H)	0.0
AV TOTAL DELAY/DAY (VEH-H)	0.0

AVERAGE ACCIDENT NUMBERS (PIA/DAY)	
MAIN ROUTE WITHOUT WORKS	0.0084
MAIN ROUTE WITH WORKS	0.0074
DIVERSION	0.1524

PIA: Personal Injury Accidents

IMPACTS ON ROAD USERS	
ROAD USER COSTS PER DAY ( DOLLARS)	\$55,436
CONGESTED HOURS PER DAY*	0

\*Delays Exceeding 15 Minutes

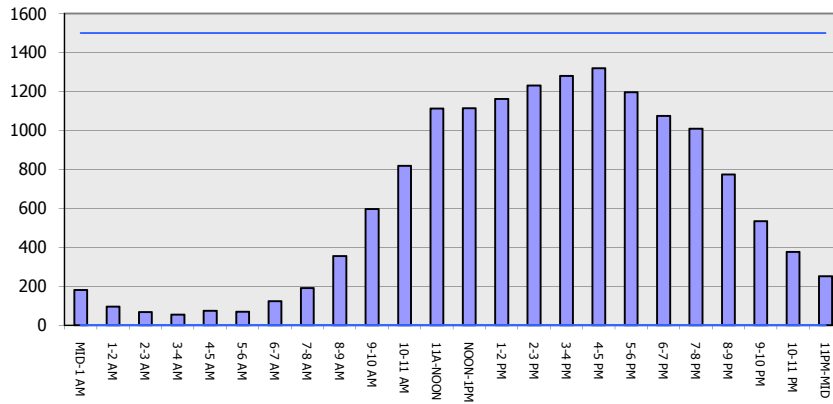
**IH 90: USH 14/61 TO USH 53  
 CONTINUOUS (24 HOUR) CLOSURE  
 DIVERSION ROUTE: USH 53 TO USH 14/61**

**MAY**  
 Analyzed for 2009  
 Construction Season

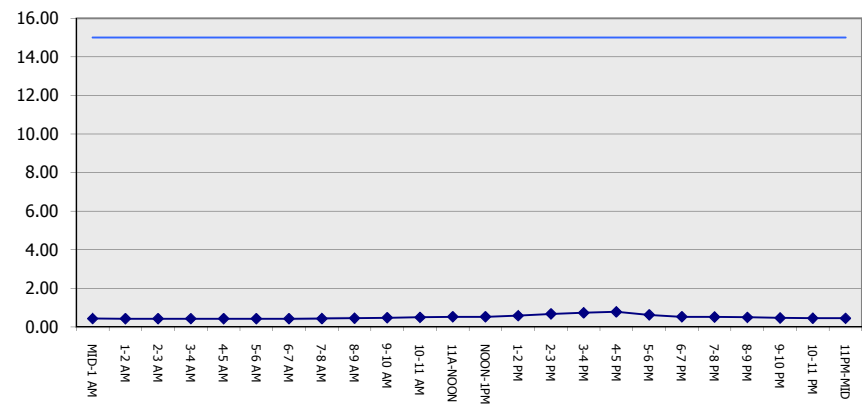
**GRAPHICAL REPRESENTATION OF TRAFFIC MODEL INPUT AND OUTPUT**

**SUNDAY WESTBOUND DIRECTION**

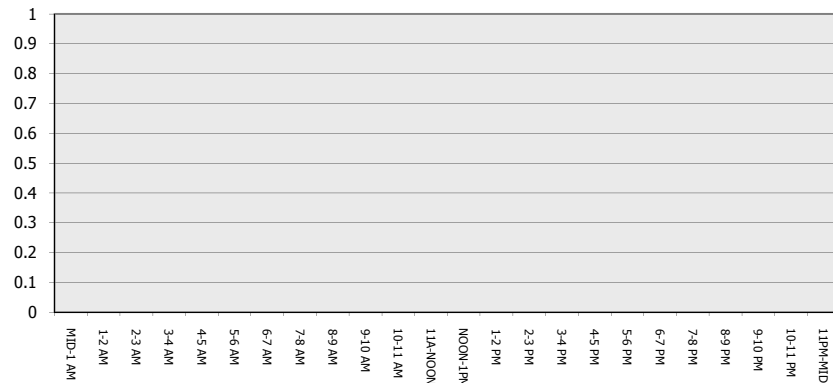
**Main Route - Traffic Demand (Vehicles Per Hour)**



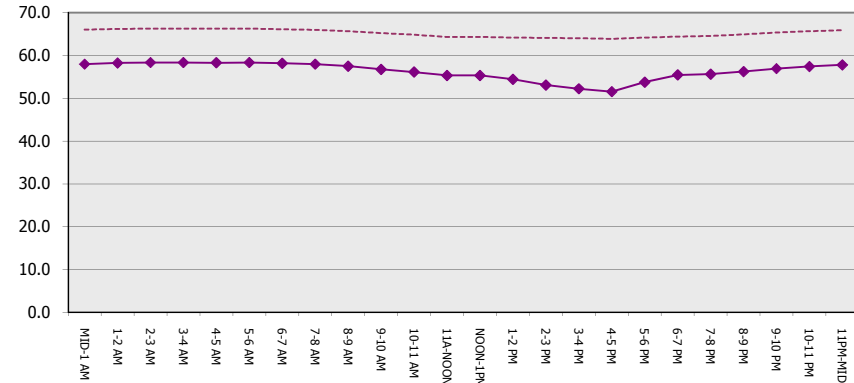
**Main Route Average Delay Per Vehicle (Minutes)**



**Main Route - Average Queue Length (Vehicles)**



**Main Route - Average Speed (MPH)**



<b>IH 90: USH 14/61 TO USH 53</b> <b>CONTINUOUS (24 HOUR) CLOSURE</b> <b>DIVERSION ROUTE: USH 53 TO USH 14/61</b>	<b>MAY</b>
	Analyzed for 2009 Construction Season

**SUMMARY OF TRAFFIC MODEL OUTPUT**

SUNDAY EASTBOUND DIRECTION

TIME OF DAY	FLOWS AND CAPACITY IN VEH/HR								AVERAGE SPEEDS IN MPH						
	MAIN		DIVERSION		SITE CAPA CITY	FLOW MAIN ROUTE	FLOW DIVER -TING	TOTAL DIVN FLOW	AV.DEL PER VEH (MINS)	AVERAGE QUEUE (VEH)	MAIN ROUTE		SITE	ALTERNATE ROUTE	
	DEMAND FLOW	PCT HEAVY	NORMAL FLOW	PCT HEAVY							WITHOUT WORK ZN	WITH WORK ZN		WITHOUT WORK ZN	WITH WORK ZN
MID-1 AM	117	0.0	107	7.0	1500	117	0	107	0.43	0	66.1	58.2	45.0	18.9	18.9
1-2 AM	79	0.0	72	7.0	1500	79	0	72	0.43	0	66.3	58.3	45.1	20.0	20.0
2-3 AM	74	0.0	68	7.0	1500	74	0	68	0.43	0	66.3	58.3	45.2	20.1	20.1
3-4 AM	82	0.0	75	7.0	1500	82	0	75	0.43	0	66.3	58.3	45.1	19.9	19.9
4-5 AM	97	0.0	89	7.0	1500	97	0	89	0.43	0	66.2	58.2	45.1	19.4	19.4
5-6 AM	133	0.0	121	7.0	1500	133	0	121	0.44	0	66.1	58.1	45.0	18.4	18.4
6-7 AM	175	0.0	160	7.0	1500	175	0	160	0.44	0	66.1	58.0	44.8	17.1	17.1
7-8 AM	349	0.0	319	7.0	1500	349	0	319	0.46	0	65.8	57.5	44.1	12.0	12.0
8-9 AM	547	0.0	500	7.0	1500	547	0	500	0.48	0	65.4	56.9	43.3	8.6	8.6
9-10 AM	754	0.0	689	7.0	1500	754	0	689	0.50	0	65.0	56.3	42.5	7.1	7.1
10-11 AM	1026	0.0	938	7.0	1500	1026	0	938+	0.52	0	64.5	55.6	41.6	5.6	5.6
11A-NOON	1183	0.0	1082	7.0	1500	1183	0	1082+	0.61	0	64.2	54.0	39.0	5.6	5.6
NOON-1PM	1216	0.0	1114	7.0	1500	1216	0	1114+	0.66	0	64.1	53.4	37.9	5.6	5.6
1-2 PM	1238	0.0	1132	7.0	1500	1238	0	1132+	0.69	0	64.1	53.0	37.3	5.6	5.6
2-3 PM	1339	0.0	1225	7.0	1500	1339	0	1225+	0.82	0	63.9	51.2	34.5	5.6	5.6
3-4 PM	1386	0.0	1268	7.0	1500	1386	0	1268+	0.88	0	63.8	50.4	33.3	5.6	5.6
4-5 PM	1298	0.0	1187	7.0	1500	1298	0	1187+	0.76	0	64.0	51.9	35.6	5.6	5.6
5-6 PM	1151	0.0	1052	7.0	1500	1151	0	1052+	0.57	0	64.2	54.6	40.1	5.6	5.6
6-7 PM	948	0.0	867	7.0	1500	948	0	867+	0.51	0	64.6	55.8	41.9	5.7	5.7
7-8 PM	775	0.0	709	7.0	1500	775	0	709	0.50	0	65.0	56.3	42.5	6.9	6.9
8-9 PM	590	0.0	541	7.0	1500	590	0	541	0.48	0	65.3	56.8	43.2	8.2	8.2
9-10 PM	421	0.0	385	7.0	1500	421	0	385	0.46	0	65.6	57.3	43.8	9.8	9.8
10-11 PM	270	0.0	247	7.0	1500	270	0	247	0.45	0	65.9	57.8	44.4	14.3	14.3
11PM-MID	177	0.0	161	7.0	1500	177	0	161	0.44	0	66.1	58.0	44.8	17.1	17.1

+ INDICATES DIVERSION FLOW EXCEEDS USER-SPECIFIED WARNING LIMIT

*----- SITE BREAKDOWN DELAYS -----*	
BREAKDOWN DURATION (MINS)	0
RANGE OF QUEUE DELAY - MIN	0.0
(VEH-H) MAX	0.0
RANGE OF DIVN DELAY - MIN	0.0
(VEH-H) MAX	0.0
AV BREAKDOWNS PER DAY	0.00
AV QUEUE DELAY/DAY (VEH-H)	0.0
AV DIVN DELAY/DAY (VEH-H)	0.0
AV TOTAL DELAY/DAY (VEH-H)	0.0

*----- SITE ACCIDENT DELAYS -----*	
ACCIDENT DURATION (MINS)	0
RANGE OF QUEUE DELAY - MIN	0.0
(VEH-H) MAX	0.0
RANGE OF DIVN DELAY - MIN	0.0
(VEH-H) MAX	0.0
AV ACCIDENTS PER DAY	0.00
AV QUEUE DELAY/DAY (VEH-H)	0.0
AV DIVN DELAY/DAY (VEH-H)	0.0
AV TOTAL DELAY/DAY (VEH-H)	0.0

AVERAGE ACCIDENT NUMBERS (PIA/DAY)	
MAIN ROUTE WITHOUT WORKS	0.0086
MAIN ROUTE WITH WORKS	0.0076
DIVERSION	0.1560

PIA: Personal Injury Accidents

IMPACTS ON ROAD USERS	
ROAD USER COSTS PER DAY ( DOLLARS)	\$60,867
CONGESTED HOURS PER DAY*	0

\*Delays Exceeding 15 Minutes

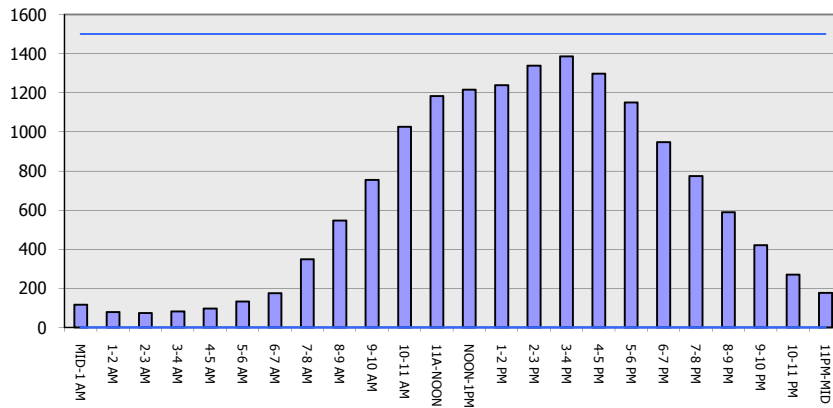
**IH 90: USH 14/61 TO USH 53  
 CONTINUOUS (24 HOUR) CLOSURE  
 DIVERSION ROUTE: USH 53 TO USH 14/61**

**MAY**  
 Analyzed for 2009  
 Construction Season

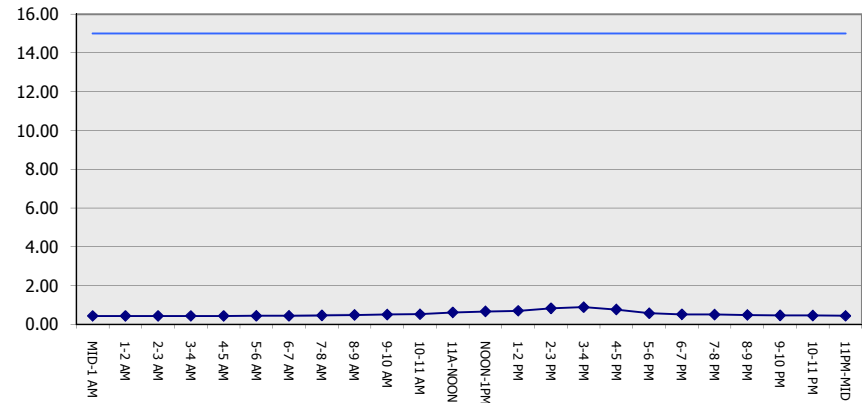
**GRAPHICAL REPRESENTATION OF TRAFFIC MODEL INPUT AND OUTPUT**

**SUNDAY EASTBOUND DIRECTION**

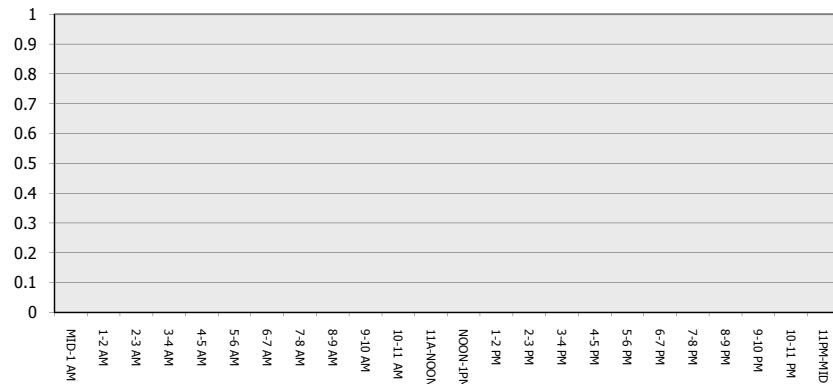
**Main Route - Traffic Demand (Vehicles Per Hour)**



**Main Route Average Delay Per Vehicle (Minutes)**



**Main Route - Average Queue Length (Vehicles)**



**Main Route - Average Speed (MPH)**

