

**IH 90: USH 14/61 TO USH 53  
CONTINUOUS (24 HOUR) CLOSURE  
DIVERSION ROUTE: USH 53 TO USH 14/61**

**MAY**  
Analyzed for 2009  
Construction Season

**SUMMARY OF TRAFFIC MODEL OUTPUT**  
**SATURDAY WESTBOUND DIRECTION**

TIME OF DAY	FLOWS AND CAPACITY IN VEH/HR								AVERAGE SPEEDS IN MPH						
	MAIN ROUTE		ALTERNATE ROUTE		SITE CAPA CITY	FLOW MAIN ROUTE	FLOW DIVER -TING	TOTAL DIVN FLOW	AV.DEL PER VEH (MINS)	AVERAGE QUEUE (VEH)	MAIN ROUTE		ALTERNATE ROUTE		
	DEMAND FLOW	PCT HEAVY	NORMAL FLOW	PCT HEAVY							WITHOUT WORK ZN	WITH WORK ZN	SITE	WITHOUT WORK ZN	WITH WORK ZN
MID-1 AM	242	0.0	222	7.0	1500	242	0	222	0.45	0	66.0	57.8	44.5	15.2	15.2
1-2 AM	144	0.0	132	7.0	1500	144	0	132	0.44	0	66.1	58.1	44.9	18.1	18.1
2-3 AM	137	0.0	125	7.0	1500	137	0	125	0.44	0	66.1	58.1	45.0	18.3	18.3
3-4 AM	140	0.0	128	7.0	1500	140	0	128	0.44	0	66.1	58.1	44.9	18.2	18.2
4-5 AM	140	0.0	128	7.0	1500	140	0	128	0.44	0	66.1	58.1	44.9	18.2	18.2
5-6 AM	162	0.0	149	7.0	1500	162	0	149	0.44	0	66.1	58.1	44.8	17.5	17.5
6-7 AM	287	0.0	263	7.0	1500	287	0	263	0.45	0	65.8	57.7	44.3	13.8	13.8
7-8 AM	488	0.0	447	7.0	1500	488	0	447	0.47	0	65.5	57.1	43.5	8.9	8.9
8-9 AM	703	0.0	643	7.0	1500	703	0	643	0.49	0	65.1	56.5	42.7	7.5	7.5
9-10 AM	1094	0.0	1001	7.0	1500	1094	0	1001+	0.53	0	64.3	55.4	41.4	5.6	5.6
10-11 AM	1269	0.0	1161	7.0	1500	1269	0	1161+	0.73	0	64.0	52.4	36.4	5.6	5.6
11A-NOON	1277	0.0	1169	7.0	1500	1277	0	1169+	0.74	0	64.0	52.3	36.1	5.6	5.6
NOON-1PM	1154	0.0	1055	7.0	1500	1154	0	1055+	0.58	0	64.2	54.6	40.0	5.6	5.6
1-2 PM	1037	0.0	949	7.0	1500	1037	0	949+	0.52	0	64.5	55.5	41.5	5.6	5.6
2-3 PM	1015	0.0	929	7.0	1500	1015	0	929+	0.52	0	64.5	55.6	41.6	5.6	5.6
3-4 PM	912	0.0	835	7.0	1500	912	0	835+	0.51	0	64.7	55.9	42.0	6.0	6.0
4-5 PM	870	0.0	797	7.0	1500	870	0	797+	0.51	0	64.8	56.0	42.2	6.2	6.2
5-6 PM	721	0.0	660	7.0	1500	721	0	660	0.49	0	65.0	56.4	42.7	7.3	7.3
6-7 PM	666	0.0	609	7.0	1500	666	0	609	0.49	0	65.1	56.6	42.9	7.7	7.7
7-8 PM	549	0.0	502	7.0	1500	549	0	502	0.48	0	65.4	56.9	43.3	8.5	8.5
8-9 PM	471	0.0	430	7.0	1500	471	0	430	0.47	0	65.5	57.1	43.6	9.1	9.1
9-10 PM	398	0.0	364	7.0	1500	398	0	364	0.46	0	65.6	57.4	43.9	10.5	10.5
10-11 PM	296	0.0	271	7.0	1500	296	0	271	0.45	0	65.8	57.7	44.3	13.5	13.5
11PM-MID	235	0.0	215	7.0	1500	235	0	215	0.45	0	66.0	57.9	44.5	15.3	15.3

+ INDICATES DIVERSION FLOW EXCEEDS USER-SPECIFIED WARNING LIMIT

*----- SITE BREAKDOWN DELAYS -----*	
BREAKDOWN DURATION (MINS)	0
RANGE OF QUEUE DELAY - MIN (VEH-H) MAX	0.0
RANGE OF DIVN DELAY - MIN (VEH-H) MAX	0.0
AV BREAKDOWNS PER DAY	0.00
AV QUEUE DELAY/DAY (VEH-H)	0.0
AV DIVN DELAY/DAY (VEH-H)	0.0
AV TOTAL DELAY/DAY (VEH-H)	0.0

*----- SITE ACCIDENT DELAYS -----*	
ACCIDENT DURATION (MINS)	0
RANGE OF QUEUE DELAY - MIN (VEH-H) MAX	0.0
RANGE OF DIVN DELAY - MIN (VEH-H) MAX	0.0
AV ACCIDENTS PER DAY	0.00
AV QUEUE DELAY/DAY (VEH-H)	0.0
AV DIVN DELAY/DAY (VEH-H)	0.0
AV TOTAL DELAY/DAY (VEH-H)	0.0

AVERAGE ACCIDENT NUMBERS (PIA/DAY)	
MAIN ROUTE WITHOUT WORKS	0.0080
MAIN ROUTE WITH WORKS	0.0071
DIVERSION	0.1458

PIA: Personal Injury Accidents

IMPACTS ON ROAD USERS	
ROAD USER COSTS PER DAY ( DOLLARS)	\$1,986
CONGESTED HOURS PER DAY*	0

\*Delays Exceeding 15 Minutes

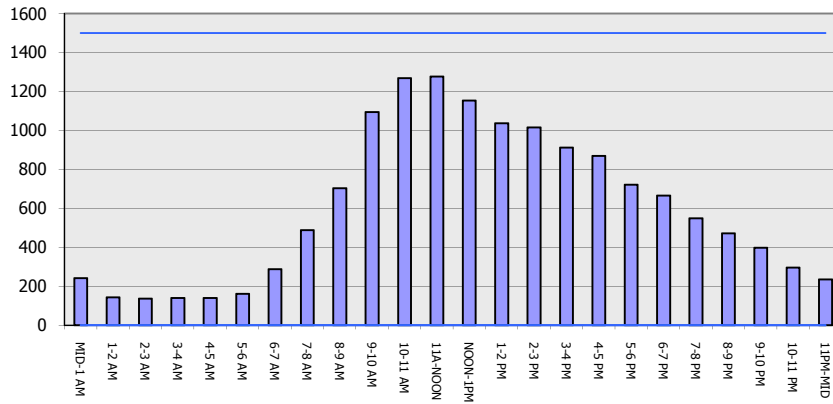
**IH 90: USH 14/61 TO USH 53  
CONTINUOUS (24 HOUR) CLOSURE  
DIVERSION ROUTE: USH 53 TO USH 14/61**

**MAY**  
Analyzed for 2009  
Construction Season

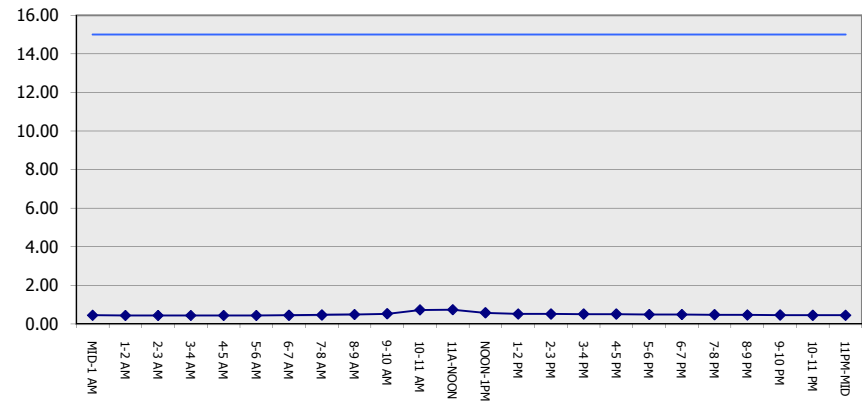
**GRAPHICAL REPRESENTATION OF TRAFFIC MODEL INPUT AND OUTPUT**

**SATURDAY WESTBOUND DIRECTION**

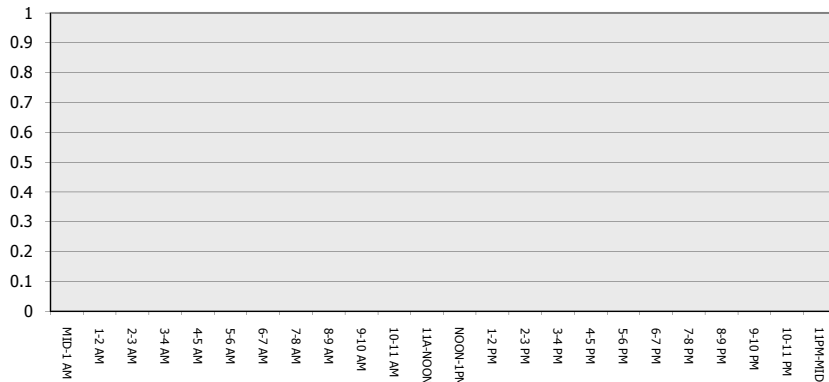
**Main Route - Traffic Demand (Vehicles Per Hour)**



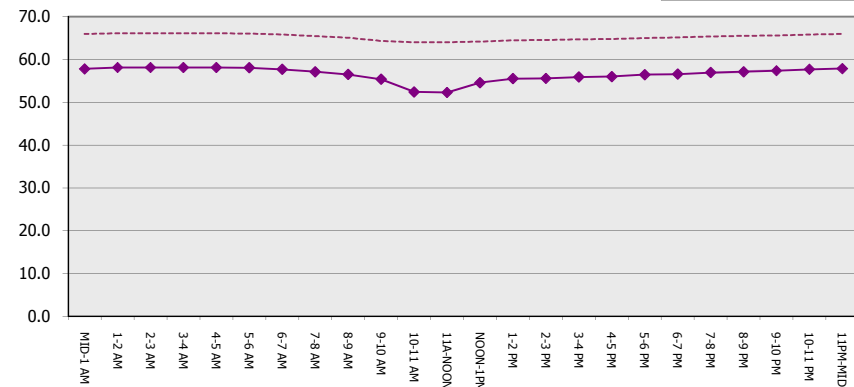
**Main Route Average Delay Per Vehicle (Minutes)**



**Main Route - Average Queue Length (Vehicles)**



**Main Route - Average Speed (MPH)**



<b>IH 90: USH 14/61 TO USH 53</b> <b>CONTINUOUS (24 HOUR) CLOSURE</b> <b>DIVERSION ROUTE: USH 53 TO USH 14/61</b>	<b>MAY</b>
	Analyzed for 2009 Construction Season

**SUMMARY OF TRAFFIC MODEL OUTPUT**

SATURDAY EASTBOUND DIRECTION

TIME OF DAY	FLOWS AND CAPACITY IN VEH/HR								AVERAGE SPEEDS IN MPH						
	MAIN		DIVERSION		SITE CAPA CITY	FLOW MAIN ROUTE	FLOW DIVER -TING	TOTAL DIVN FLOW	AV.DEL PER VEH (MINS)	AVERAGE QUEUE (VEH)	MAIN ROUTE		ALTERNATE ROUTE		
	DEMAND FLOW	PCT HEAVY	NORMAL FLOW	PCT HEAVY							WITHOUT WORK ZN	WITH WORK ZN	SITE	WITHOUT WORK ZN	WITH WORK ZN
MID-1 AM	190	0.0	173	7.0	1500	190	0	173	0.44	0	66.0	58.0	44.7	16.7	16.7
1-2 AM	144	0.0	132	7.0	1500	144	0	132	0.44	0	66.1	58.1	44.9	18.1	18.1
2-3 AM	118	0.0	108	7.0	1500	118	0	108	0.43	0	66.1	58.2	45.0	18.8	18.8
3-4 AM	132	0.0	120	7.0	1500	132	0	120	0.44	0	66.1	58.2	45.0	18.4	18.4
4-5 AM	144	0.0	132	7.0	1500	144	0	132	0.44	0	66.1	58.1	44.9	18.1	18.1
5-6 AM	215	0.0	197	7.0	1500	215	0	197	0.44	0	66.0	57.9	44.6	16.0	16.0
6-7 AM	346	0.0	317	7.0	1500	346	0	317	0.46	0	65.8	57.5	44.1	12.0	12.0
7-8 AM	524	0.0	479	7.0	1500	524	0	479	0.47	0	65.4	57.0	43.4	8.7	8.7
8-9 AM	786	0.0	719	7.0	1500	786	0	719	0.50	0	64.9	56.3	42.4	6.8	6.8
9-10 AM	979	0.0	895	7.0	1500	979	0	895+	0.52	0	64.6	55.7	41.7	5.6	5.6
10-11 AM	1100	0.0	1007	7.0	1500	1100	0	1007+	0.53	0	64.3	55.3	41.4	5.6	5.6
11A-NOON	1158	0.0	1059	7.0	1500	1158	0	1059+	0.58	0	64.2	54.5	39.9	5.6	5.6
NOON-1PM	1097	0.0	1003	7.0	1500	1097	0	1003+	0.53	0	64.3	55.4	41.4	5.6	5.6
1-2 PM	1102	0.0	1008	7.0	1500	1102	0	1008+	0.53	0	64.3	55.3	41.3	5.6	5.6
2-3 PM	1028	0.0	940	7.0	1500	1028	0	940+	0.52	0	64.5	55.6	41.6	5.6	5.6
3-4 PM	1021	0.0	934	7.0	1500	1021	0	934+	0.52	0	64.5	55.6	41.6	5.6	5.6
4-5 PM	993	0.0	909	7.0	1500	993	0	909+	0.52	0	64.5	55.6	41.7	5.6	5.6
5-6 PM	856	0.0	783	7.0	1500	856	0	783+	0.51	0	64.8	56.0	42.2	6.3	6.3
6-7 PM	825	0.0	755	7.0	1500	825	0	755+	0.50	0	64.8	56.1	42.3	6.6	6.6
7-8 PM	644	0.0	589	7.0	1500	644	0	589	0.48	0	65.2	56.6	43.0	7.8	7.8
8-9 PM	585	0.0	535	7.0	1500	585	0	535	0.48	0	65.3	56.8	43.2	8.3	8.3
9-10 PM	417	0.0	382	7.0	1500	417	0	382	0.46	0	65.6	57.3	43.8	9.9	9.9
10-11 PM	313	0.0	287	7.0	1500	313	0	287	0.45	0	65.8	57.6	44.2	13.0	13.0
11PM-MID	189	0.0	172	7.0	1500	189	0	172	0.44	0	66.0	58.0	44.7	16.8	16.8

+ INDICATES DIVERSION FLOW EXCEEDS USER-SPECIFIED WARNING LIMIT

*----- SITE BREAKDOWN DELAYS -----*	
BREAKDOWN DURATION (MINS)	0
RANGE OF QUEUE DELAY - MIN	0.0
(VEH-H) MAX	0.0
RANGE OF DIVN DELAY - MIN	0.0
(VEH-H) MAX	0.0
AV BREAKDOWNS PER DAY	0.00
AV QUEUE DELAY/DAY (VEH-H)	0.0
AV DIVN DELAY/DAY (VEH-H)	0.0
AV TOTAL DELAY/DAY (VEH-H)	0.0

*----- SITE ACCIDENT DELAYS -----*	
ACCIDENT DURATION (MINS)	0
RANGE OF QUEUE DELAY - MIN	0.0
(VEH-H) MAX	0.0
RANGE OF DIVN DELAY - MIN	0.0
(VEH-H) MAX	0.0
AV ACCIDENTS PER DAY	0.00
AV QUEUE DELAY/DAY (VEH-H)	0.0
AV DIVN DELAY/DAY (VEH-H)	0.0
AV TOTAL DELAY/DAY (VEH-H)	0.0

AVERAGE ACCIDENT NUMBERS (PIA/DAY)	
MAIN ROUTE WITHOUT WORKS	0.0083
MAIN ROUTE WITH WORKS	0.0073
DIVERSION	0.1508

PIA: Personal Injury Accidents

IMPACTS ON ROAD USERS	
ROAD USER COSTS PER DAY ( DOLLARS)	\$1,927
CONGESTED HOURS PER DAY*	0

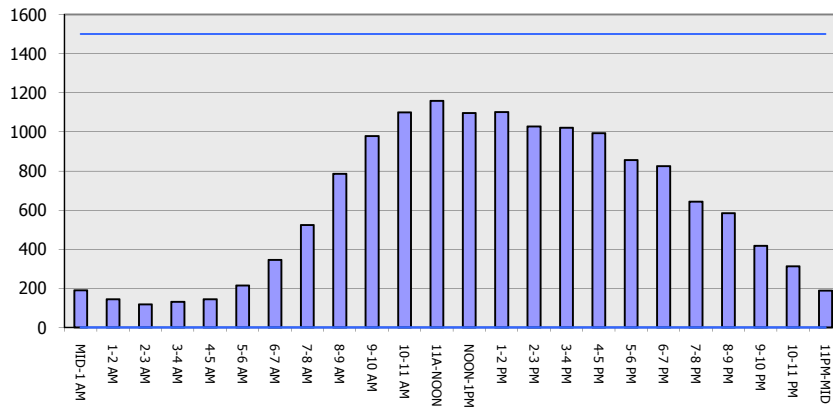
\*Delays Exceeding 15 Minutes

**IH 90: USH 14/61 TO USH 53  
 CONTINUOUS (24 HOUR) CLOSURE  
 DIVERSION ROUTE: USH 53 TO USH 14/61**

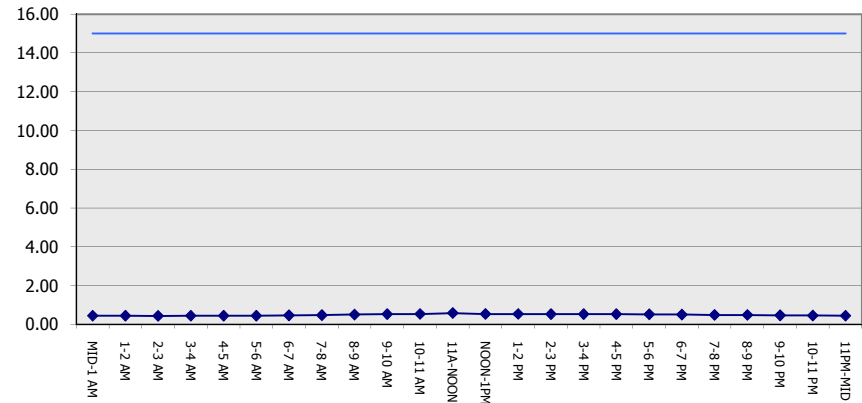
**MAY**  
 Analyzed for 2009  
 Construction Season

**GRAPHICAL REPRESENTATION OF TRAFFIC MODEL INPUT AND OUTPUT**  
**SATURDAY EASTBOUND DIRECTION**

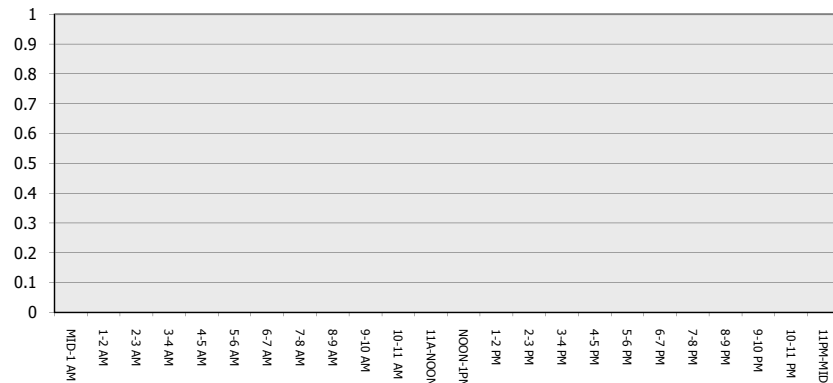
**Main Route - Traffic Demand (Vehicles Per Hour)**



**Main Route Average Delay Per Vehicle (Minutes)**



**Main Route - Average Queue Length (Vehicles)**



**Main Route - Average Speed (MPH)**

