

<b>IH 90: USH 14/61 TO USH 53</b> <b>CONTINUOUS (24 HOUR) CLOSURE</b> <b>DIVERSION ROUTE: USH 53 TO USH 14/61</b>	<b>MAY</b>
	Analyzed for 2009 Construction Season

**SUMMARY OF TRAFFIC MODEL OUTPUT**

MON-THUR                      WESTBOUND DIRECTION

TIME OF DAY	FLOWS AND CAPACITY IN VEH/HR						AVERAGE SPEEDS IN MPH								
	MAIN ROUTE		ALTERNATE ROUTE		SITE CAPA CITY	FLOW MAIN ROUTE	FLOW DIVER -TING	TOTAL DIVN FLOW	AV.DEL PER VEH (MINS)	AVERAGE QUEUE (VEH)	MAIN ROUTE		ALTERNATE ROUTE		
	DEMAND FLOW	PCT HEAVY	NORMAL FLOW	PCT HEAVY							WITHOUT WORK ZN	WITH WORK ZN	SITE	WITHOUT WORK ZN	WITH WORK ZN
MID-1 AM	180	0.0	164	7.0	1500	180	0	164	0.44	0	66.1	58.0	44.8	17.0	17.0
1-2 AM	124	0.0	112	7.0	1500	124	0	112	0.43	0	66.1	58.2	45.0	18.7	18.7
2-3 AM	117	0.0	107	7.0	1500	117	0	107	0.43	0	66.1	58.2	45.0	18.9	18.9
3-4 AM	135	0.0	123	7.0	1500	135	0	123	0.44	0	66.1	58.1	45.0	18.3	18.3
4-5 AM	195	0.0	178	7.0	1500	195	0	178	0.44	0	66.0	57.9	44.7	16.5	16.5
5-6 AM	332	0.0	304	7.0	1500	332	0	304	0.45	0	65.8	57.6	44.2	12.4	12.4
6-7 AM	489	0.0	448	7.0	1500	489	0	448	0.47	0	65.5	57.1	43.5	8.9	8.9
7-8 AM	665	0.0	609	7.0	1500	665	0	609	0.49	0	65.1	56.6	42.9	7.7	7.7
8-9 AM	765	0.0	700	7.0	1500	765	0	700	0.50	0	65.0	56.3	42.5	7.0	7.0
9-10 AM	859	0.0	786	7.0	1500	859	0	786+	0.51	0	64.8	56.0	42.2	6.3	6.3
10-11 AM	900	0.0	823	7.0	1500	900	0	823+	0.51	0	64.7	55.9	42.0	6.0	6.0
11A-NOON	884	0.0	809	7.0	1500	884	0	809+	0.51	0	64.7	56.0	42.1	6.1	6.1
NOON-1PM	896	0.0	820	7.0	1500	896	0	820+	0.51	0	64.7	56.0	42.0	6.1	6.1
1-2 PM	971	0.0	888	7.0	1500	971	0	888+	0.52	0	64.6	55.7	41.8	5.6	5.6
2-3 PM	1077	0.0	986	7.0	1500	1077	0	986+	0.53	0	64.4	55.4	41.4	5.6	5.6
3-4 PM	1169	0.0	1069	7.0	1500	1169	0	1069+	0.60	0	64.2	54.3	39.5	5.6	5.6
4-5 PM	1215	0.0	1111	7.0	1500	1215	0	1111+	0.66	0	64.1	53.4	37.9	5.6	5.6
5-6 PM	1005	0.0	919	7.0	1500	1005	0	919+	0.52	0	64.5	55.6	41.7	5.6	5.6
6-7 PM	808	0.0	738	7.0	1500	808	0	738+	0.50	0	64.9	56.2	42.4	6.7	6.7
7-8 PM	656	0.0	600	7.0	1500	656	0	600	0.49	0	65.1	56.6	42.9	7.8	7.8
8-9 PM	538	0.0	492	7.0	1500	538	0	492	0.47	0	65.4	56.9	43.3	8.6	8.6
9-10 PM	446	0.0	409	7.0	1500	446	0	409	0.47	0	65.6	57.2	43.7	9.3	9.3
10-11 PM	329	0.0	301	7.0	1500	329	0	301	0.45	0	65.8	57.6	44.2	12.5	12.5
11PM-MID	240	0.0	221	7.0	1500	240	0	221	0.45	0	66.0	57.8	44.5	15.2	15.2

+ INDICATES DIVERSION FLOW EXCEEDS USER-SPECIFIED WARNING LIMIT

*----- SITE BREAKDOWN DELAYS -----*	
BREAKDOWN DURATION (MINS)	0
RANGE OF QUEUE DELAY - MIN (VEH-H) MAX	0.0
RANGE OF DIVN DELAY - MIN (VEH-H) MAX	0.0
AV BREAKDOWNS PER DAY	0.00
AV QUEUE DELAY/DAY (VEH-H)	0.0
AV DIVN DELAY/DAY (VEH-H)	0.0
AV TOTAL DELAY/DAY (VEH-H)	0.0

*----- SITE ACCIDENT DELAYS -----*	
ACCIDENT DURATION (MINS)	0
RANGE OF QUEUE DELAY - MIN (VEH-H) MAX	0.0
RANGE OF DIVN DELAY - MIN (VEH-H) MAX	0.0
AV ACCIDENTS PER DAY	0.00
AV QUEUE DELAY/DAY (VEH-H)	0.0
AV DIVN DELAY/DAY (VEH-H)	0.0
AV TOTAL DELAY/DAY (VEH-H)	0.0

AVERAGE ACCIDENT NUMBERS (PIA/DAY)	
MAIN ROUTE WITHOUT WORKS	0.0083
MAIN ROUTE WITH WORKS	0.0074
DIVERSION	0.1517

PIA: Personal Injury Accidents

IMPACTS ON ROAD USERS	
ROAD USER COSTS PER DAY ( DOLLARS)	\$1,562
CONGESTED HOURS PER DAY*	0

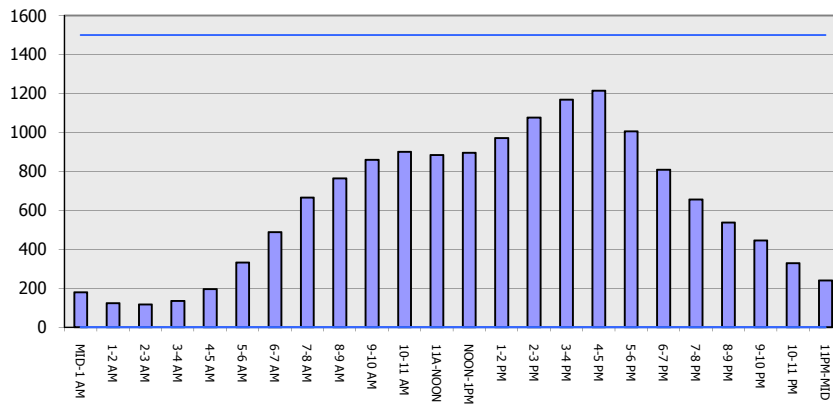
\*Delays Exceeding 15 Minutes

**IH 90: USH 14/61 TO USH 53  
 CONTINUOUS (24 HOUR) CLOSURE  
 DIVERSION ROUTE: USH 53 TO USH 14/61**

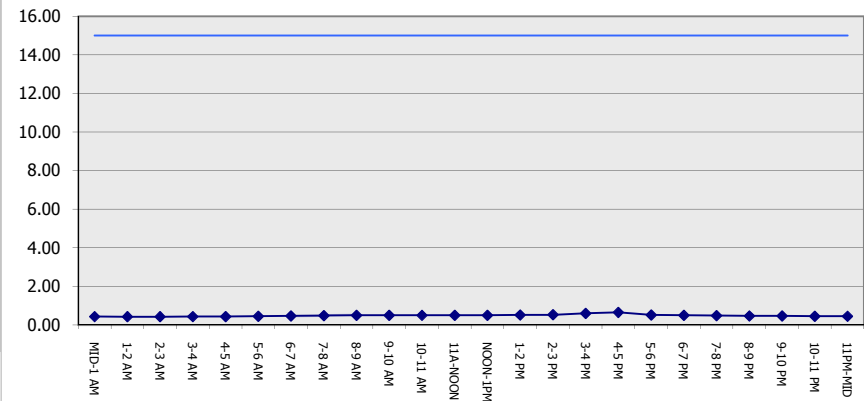
**MAY**  
 Analyzed for 2009  
 Construction Season

**GRAPHICAL REPRESENTATION OF TRAFFIC MODEL INPUT AND OUTPUT**  
**MON-THUR WESTBOUND DIRECTION**

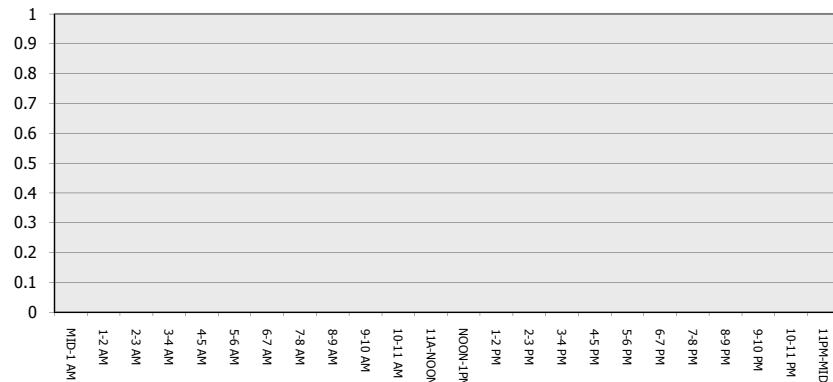
**Main Route - Traffic Demand (Vehicles Per Hour)**



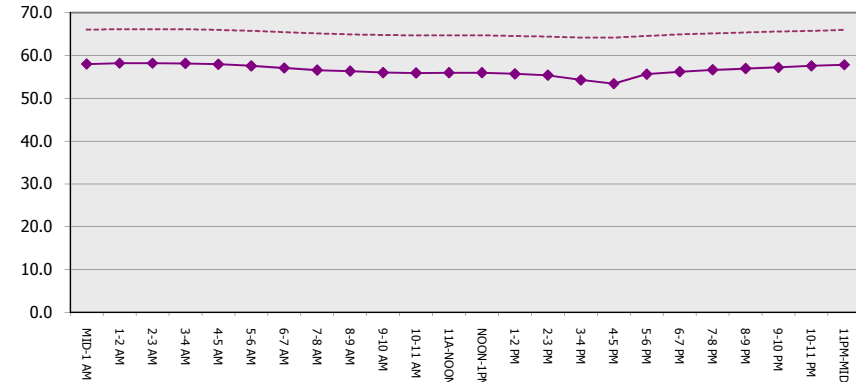
**Main Route Average Delay Per Vehicle (Minutes)**



**Main Route - Average Queue Length (Vehicles)**



**Main Route - Average Speed (MPH)**



<b>IH 90: USH 14/61 TO USH 53</b> <b>CONTINUOUS (24 HOUR) CLOSURE</b> <b>DIVERSION ROUTE: USH 53 TO USH 14/61</b>	<b>MAY</b>
	Analyzed for 2009 Construction Season

**SUMMARY OF TRAFFIC MODEL OUTPUT**

MON-THUR                      EASTBOUND DIRECTION

TIME OF DAY	FLOWS AND CAPACITY IN VEH/HR								AVERAGE SPEEDS IN MPH						
	MAIN		DIVERSION		SITE CAPA CITY	FLOW MAIN ROUTE	FLOW DIVER -TING	TOTAL DIVN FLOW	AV.DEL PER VEH (MINS)	AVERAGE QUEUE (VEH)	MAIN ROUTE		SITE	ALTERNATE ROUTE	
	DEMAND FLOW	PCT HEAVY	NORMAL FLOW	PCT HEAVY							WITHOUT WORK ZN	WITH WORK ZN		WITHOUT WORK ZN	WITH WORK ZN
MID-1 AM	152	0.0	139	7.0	1500	152	0	139	0.44	0	66.1	58.1	44.9	17.8	17.8
1-2 AM	126	0.0	115	7.0	1500	126	0	115	0.43	0	66.1	58.2	45.0	18.6	18.6
2-3 AM	131	0.0	120	7.0	1500	131	0	120	0.44	0	66.1	58.2	45.0	18.4	18.4
3-4 AM	179	0.0	163	7.0	1500	179	0	163	0.44	0	66.1	58.0	44.8	17.0	17.0
4-5 AM	232	0.0	213	7.0	1500	232	0	213	0.45	0	66.0	57.9	44.5	15.4	15.4
5-6 AM	404	0.0	369	7.0	1500	404	0	369	0.46	0	65.6	57.4	43.9	10.3	10.3
6-7 AM	621	0.0	568	7.0	1500	621	0	568	0.48	0	65.2	56.7	43.0	8.0	8.0
7-8 AM	796	0.0	728	7.0	1500	796	0	728+	0.50	0	64.9	56.2	42.4	6.8	6.8
8-9 AM	742	0.0	679	7.0	1500	742	0	679	0.49	0	65.0	56.4	42.6	7.1	7.1
9-10 AM	772	0.0	706	7.0	1500	772	0	706	0.50	0	65.0	56.3	42.5	7.0	7.0
10-11 AM	829	0.0	759	7.0	1500	829	0	759+	0.50	0	64.8	56.1	42.3	6.5	6.5
11A-NOON	861	0.0	788	7.0	1500	861	0	788+	0.51	0	64.8	56.0	42.2	6.3	6.3
NOON-1PM	890	0.0	813	7.0	1500	890	0	813+	0.51	0	64.7	56.0	42.0	6.1	6.1
1-2 PM	974	0.0	891	7.0	1500	974	0	891+	0.52	0	64.6	55.7	41.8	5.6	5.6
2-3 PM	1030	0.0	943	7.0	1500	1030	0	943+	0.52	0	64.5	55.6	41.5	5.6	5.6
3-4 PM	1058	0.0	968	7.0	1500	1058	0	968+	0.52	0	64.4	55.5	41.5	5.6	5.6
4-5 PM	1063	0.0	973	7.0	1500	1063	0	973+	0.53	0	64.4	55.5	41.5	5.6	5.6
5-6 PM	950	0.0	868	7.0	1500	950	0	868+	0.51	0	64.6	55.8	41.9	5.7	5.7
6-7 PM	723	0.0	662	7.0	1500	723	0	662	0.49	0	65.0	56.4	42.7	7.3	7.3
7-8 PM	620	0.0	567	7.0	1500	620	0	567	0.48	0	65.2	56.7	43.0	8.0	8.0
8-9 PM	500	0.0	457	7.0	1500	500	0	457	0.47	0	65.5	57.1	43.5	8.9	8.9
9-10 PM	424	0.0	388	7.0	1500	424	0	388	0.46	0	65.6	57.3	43.8	9.7	9.7
10-11 PM	294	0.0	269	7.0	1500	294	0	269	0.45	0	65.8	57.7	44.3	13.6	13.6
11PM-MID	228	0.0	210	7.0	1500	228	0	210	0.44	0	66.0	57.9	44.6	15.5	15.5

+ INDICATES DIVERSION FLOW EXCEEDS USER-SPECIFIED WARNING LIMIT

*----- SITE BREAKDOWN DELAYS -----*	
BREAKDOWN DURATION (MINS)	0
RANGE OF QUEUE DELAY - MIN	0.0
(VEH-H) MAX	0.0
RANGE OF DIVN DELAY - MIN	0.0
(VEH-H) MAX	0.0
AV BREAKDOWNS PER DAY	0.00
AV QUEUE DELAY/DAY (VEH-H)	0.0
AV DIVN DELAY/DAY (VEH-H)	0.0
AV TOTAL DELAY/DAY (VEH-H)	0.0

*----- SITE ACCIDENT DELAYS -----*	
ACCIDENT DURATION (MINS)	0
RANGE OF QUEUE DELAY - MIN	0.0
(VEH-H) MAX	0.0
RANGE OF DIVN DELAY - MIN	0.0
(VEH-H) MAX	0.0
AV ACCIDENTS PER DAY	0.00
AV QUEUE DELAY/DAY (VEH-H)	0.0
AV DIVN DELAY/DAY (VEH-H)	0.0
AV TOTAL DELAY/DAY (VEH-H)	0.0

AVERAGE ACCIDENT NUMBERS (PIA/DAY)	
MAIN ROUTE WITHOUT WORKS	0.0081
MAIN ROUTE WITH WORKS	0.0072
DIVERSION	0.1477

PIA: Personal Injury Accidents

IMPACTS ON ROAD USERS	
ROAD USER COSTS PER DAY ( DOLLARS)	\$1,459
CONGESTED HOURS PER DAY*	0

\*Delays Exceeding 15 Minutes

**IH 90: USH 14/61 TO USH 53  
 CONTINUOUS (24 HOUR) CLOSURE  
 DIVERSION ROUTE: USH 53 TO USH 14/61**

**MAY**  
 Analyzed for 2009  
 Construction Season

**GRAPHICAL REPRESENTATION OF TRAFFIC MODEL INPUT AND OUTPUT**  
**MON-THUR EASTBOUND DIRECTION**

