

IH 90: USH 14/61 TO USH 53 CONTINUOUS (24 HOUR) CLOSURE DIVERSION ROUTE: USH 53 TO USH 14/61	MAY
	Analyzed for 2009 Construction Season

SUMMARY OF TRAFFIC MODEL OUTPUT

FRIDAY WESTBOUND DIRECTION

TIME OF DAY	FLOWS AND CAPACITY IN VEH/HR								AVERAGE SPEEDS IN MPH						
	MAIN ROUTE		ALTERNATE ROUTE		SITE CAPA CITY	FLOW MAIN ROUTE	FLOW DIVER -TING	TOTAL DIVN FLOW	AV.DEL PER VEH (MINS)	AVERAGE QUEUE (VEH)	MAIN ROUTE		ALTERNATE ROUTE		
	DEMAND FLOW	PCT HEAVY	NORMAL FLOW	PCT HEAVY							WITHOUT WORK ZN	WITH WORK ZN	SITE	WITHOUT WORK ZN	WITH WORK ZN
MID-1 AM	226	0.0	207	7.0	1500	226	0	207	0.44	0	66.0	57.9	44.6	15.6	15.6
1-2 AM	162	0.0	149	7.0	1500	162	0	149	0.44	0	66.1	58.1	44.8	17.5	17.5
2-3 AM	165	0.0	151	7.0	1500	165	0	151	0.44	0	66.1	58.1	44.8	17.5	17.5
3-4 AM	164	0.0	150	7.0	1500	164	0	150	0.44	0	66.1	58.1	44.8	17.5	17.5
4-5 AM	227	0.0	209	7.0	1500	227	0	209	0.44	0	66.0	57.9	44.6	15.5	15.5
5-6 AM	344	0.0	315	7.0	1500	344	0	315	0.46	0	65.8	57.5	44.1	12.1	12.1
6-7 AM	496	0.0	454	7.0	1500	496	0	454	0.47	0	65.5	57.1	43.5	8.9	8.9
7-8 AM	727	0.0	666	7.0	1500	727	0	666	0.49	0	65.0	56.4	42.7	7.3	7.3
8-9 AM	873	0.0	798	7.0	1500	873	0	798+	0.51	0	64.8	56.0	42.1	6.2	6.2
9-10 AM	944	0.0	863	7.0	1500	944	0	863+	0.51	0	64.6	55.8	41.9	5.7	5.7
10-11 AM	1051	0.0	962	7.0	1500	1051	0	962+	0.52	0	64.4	55.5	41.5	5.6	5.6
11A-NOON	1194	0.0	1093	7.0	1500	1194	0	1093+	0.63	0	64.1	53.8	38.6	5.6	5.6
NOON-1PM	1169	0.0	1069	7.0	1500	1169	0	1069+	0.60	0	64.2	54.3	39.5	5.6	5.6
1-2 PM	1254	0.0	1147	7.0	1500	1254	0	1147+	0.71	0	64.0	52.7	36.8	5.6	5.6
2-3 PM	1451	0.0	1327	7.0	1499	1451	0	1327+	0.96	0	63.7	49.3	31.9	5.6	5.6
3-4 PM	1600	0.0	1464	7.0	1499	1600	0	1464+	2.55	45	63.4	35.8	30.8	5.6	5.6
4-5 PM	1604	0.0	1468	7.0	1500	1604	0	1468+	6.68	155	63.4	21.0	30.8	5.6	5.6
5-6 PM	1484	0.0	1358	7.0	1499	1484	0	1358+	8.63	205	63.6	17.6	30.8	5.6	5.6
6-7 PM	1316	0.0	1203	7.0	1499	1316	0	1203+	4.48	107	64.0	27.0	32.2	5.6	5.6
7-8 PM	1127	0.0	1031	7.0	1500	1127	0	1032+	0.57	0	64.3	54.8	40.3	5.6	5.6
8-9 PM	918	0.0	840	7.0	1500	918	0	840+	0.51	0	64.6	55.9	42.0	5.9	5.9
9-10 PM	650	0.0	596	7.0	1500	650	0	596	0.49	0	65.1	56.6	42.9	7.8	7.8
10-11 PM	473	0.0	432	7.0	1500	473	0	432	0.47	0	65.5	57.1	43.6	9.1	9.1
11PM-MID	320	0.0	293	7.0	1500	320	0	293	0.45	0	65.8	57.6	44.2	12.8	12.8

+ INDICATES DIVERSION FLOW EXCEEDS USER-SPECIFIED WARNING LIMIT

----- SITE BREAKDOWN DELAYS -----	
BREAKDOWN DURATION (MINS)	0
RANGE OF QUEUE DELAY - MIN	0.0
(VEH-H) MAX	0.0
RANGE OF DIVN DELAY - MIN	0.0
(VEH-H) MAX	0.0
AV BREAKDOWNS PER DAY	0.00
AV QUEUE DELAY/DAY (VEH-H)	0.0
AV DIVN DELAY/DAY (VEH-H)	0.0
AV TOTAL DELAY/DAY (VEH-H)	0.0

----- SITE ACCIDENT DELAYS -----	
ACCIDENT DURATION (MINS)	0
RANGE OF QUEUE DELAY - MIN	0.0
(VEH-H) MAX	0.0
RANGE OF DIVN DELAY - MIN	0.0
(VEH-H) MAX	0.0
AV ACCIDENTS PER DAY	0.00
AV QUEUE DELAY/DAY (VEH-H)	0.0
AV DIVN DELAY/DAY (VEH-H)	0.0
AV TOTAL DELAY/DAY (VEH-H)	0.0

AVERAGE ACCIDENT NUMBERS (PIA/DAY)	
MAIN ROUTE WITHOUT WORKS	0.0111
MAIN ROUTE WITH WORKS	0.0098
DIVERSION	0.2018

PIA: Personal Injury Accidents

IMPACTS ON ROAD USERS	
ROAD USER COSTS PER DAY (DOLLARS)	\$9,200
CONGESTED HOURS PER DAY*	0

*Delays Exceeding 15 Minutes

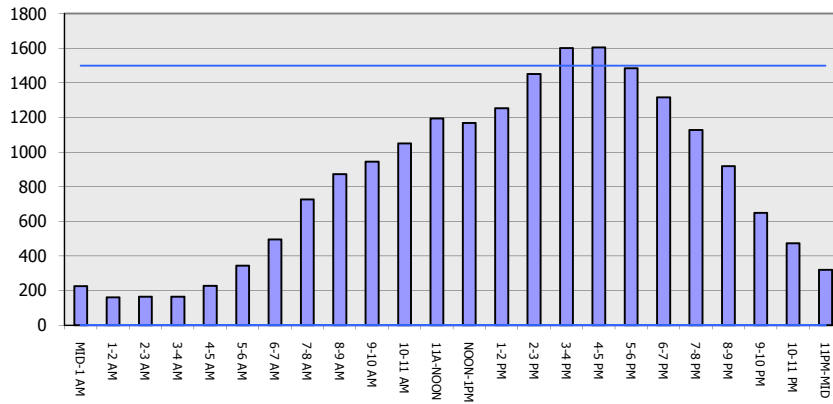
**IH 90: USH 14/61 TO USH 53
 CONTINUOUS (24 HOUR) CLOSURE
 DIVERSION ROUTE: USH 53 TO USH 14/61**

MAY
 Analyzed for 2009
 Construction Season

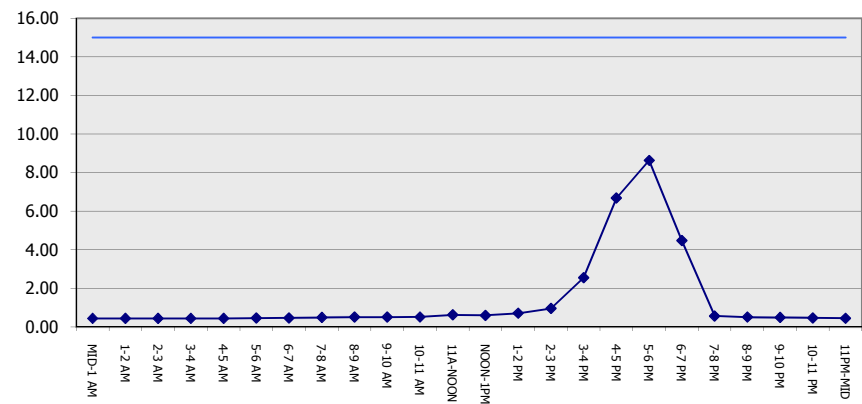
GRAPHICAL REPRESENTATION OF TRAFFIC MODEL INPUT AND OUTPUT

FRIDAY WESTBOUND DIRECTION

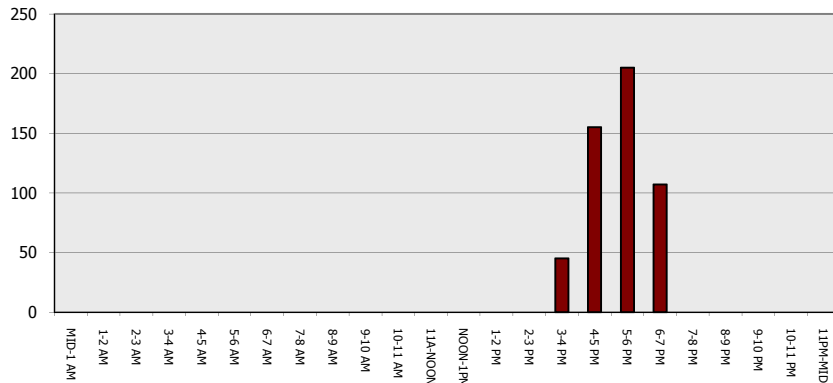
Main Route - Traffic Demand (Vehicles Per Hour)



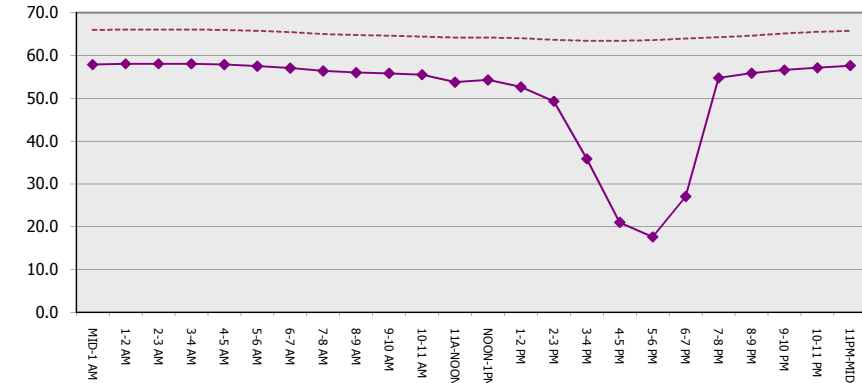
Main Route Average Delay Per Vehicle (Minutes)



Main Route - Average Queue Length (Vehicles)



Main Route - Average Speed (MPH)



IH 90: USH 14/61 TO USH 53 CONTINUOUS (24 HOUR) CLOSURE DIVERSION ROUTE: USH 53 TO USH 14/61	MAY
	Analyzed for 2009 Construction Season

SUMMARY OF TRAFFIC MODEL OUTPUT

FRIDAY EASTBOUND DIRECTION

TIME OF DAY	FLOWS AND CAPACITY IN VEH/HR								AVERAGE SPEEDS IN MPH						
	MAIN		DIVERSION		SITE CAPA CITY	FLOW MAIN ROUTE	FLOW DIVER -TING	TOTAL DIVN FLOW	AV.DEL PER VEH (MINS)	AVERAGE QUEUE (VEH)	MAIN ROUTE		ALTERNATE ROUTE		
	DEMAND FLOW	PCT HEAVY	NORMAL FLOW	PCT HEAVY							WITHOUT WORK ZN	WITH WORK ZN	SITE	WITHOUT WORK ZN	WITH WORK ZN
MID-1 AM	175	0.0	159	7.0	1500	175	0	159	0.44	0	66.1	58.0	44.8	17.2	17.2
1-2 AM	153	0.0	141	7.0	1500	153	0	141	0.44	0	66.1	58.1	44.9	17.8	17.8
2-3 AM	164	0.0	150	7.0	1500	164	0	150	0.44	0	66.1	58.1	44.8	17.5	17.5
3-4 AM	193	0.0	176	7.0	1500	193	0	176	0.44	0	66.0	58.0	44.7	16.6	16.6
4-5 AM	243	0.0	223	7.0	1500	243	0	223	0.45	0	66.0	57.8	44.5	15.1	15.1
5-6 AM	370	0.0	338	7.0	1500	370	0	338	0.46	0	65.7	57.4	44.0	11.3	11.3
6-7 AM	627	0.0	573	7.0	1500	627	0	573	0.48	0	65.2	56.7	43.0	7.9	7.9
7-8 AM	774	0.0	708	7.0	1500	774	0	708	0.50	0	65.0	56.3	42.5	6.9	6.9
8-9 AM	788	0.0	721	7.0	1500	788	0	721+	0.50	0	64.9	56.3	42.4	6.8	6.8
9-10 AM	956	0.0	875	7.0	1500	956	0	875+	0.51	0	64.6	55.8	41.9	5.7	5.7
10-11 AM	1041	0.0	953	7.0	1500	1041	0	953+	0.52	0	64.5	55.5	41.5	5.6	5.6
11A-NOON	1131	0.0	1035	7.0	1500	1131	0	1035+	0.55	0	64.3	55.0	40.8	5.6	5.6
NOON-1PM	1203	0.0	1101	7.0	1500	1203	0	1101+	0.64	0	64.1	53.7	38.4	5.6	5.6
1-2 PM	1411	0.0	1291	7.0	1499	1411	0	1291+	0.91	0	63.8	49.9	32.7	5.6	5.6
2-3 PM	1551	0.0	1419	7.0	1499	1551	0	1419+	1.73	20	63.5	41.7	30.8	5.6	5.6
3-4 PM	1585	0.0	1450	7.0	1500	1585	0	1450+	4.39	93	63.4	27.3	30.8	5.6	5.6
4-5 PM	1569	0.0	1436	7.0	1499	1569	0	1436+	7.37	172	63.5	19.6	30.8	5.6	5.6
5-6 PM	1514	0.0	1384	7.0	1499	1514	0	1384+	9.13	218	63.6	16.9	30.8	5.6	5.6
6-7 PM	1336	0.0	1223	7.0	1499	1336	0	1223+	6.30	151	63.9	21.9	31.6	5.6	5.6
7-8 PM	1020	0.0	933	7.0	1500	1020	0	933+	0.63	3	64.5	54.0	41.5	5.6	5.7
8-9 PM	748	0.0	683	7.0	1500	748	0	683	0.49	0	65.0	56.3	42.6	7.1	7.1
9-10 PM	570	0.0	521	7.0	1500	570	0	521	0.48	0	65.3	56.9	43.2	8.4	8.4
10-11 PM	437	0.0	400	7.0	1500	437	0	400	0.46	0	65.6	57.3	43.7	9.3	9.3
11PM-MID	294	0.0	269	7.0	1500	294	0	269	0.45	0	65.8	57.7	44.3	13.6	13.6

+ INDICATES DIVERSION FLOW EXCEEDS USER-SPECIFIED WARNING LIMIT

----- SITE BREAKDOWN DELAYS -----	
BREAKDOWN DURATION (MINS)	0
RANGE OF QUEUE DELAY - MIN	0.0
(VEH-H) MAX	0.0
RANGE OF DIVN DELAY - MIN	0.0
(VEH-H) MAX	0.0
AV BREAKDOWNS PER DAY	0.00
AV QUEUE DELAY/DAY (VEH-H)	0.0
AV DIVN DELAY/DAY (VEH-H)	0.0
AV TOTAL DELAY/DAY (VEH-H)	0.0

----- SITE ACCIDENT DELAYS -----	
ACCIDENT DURATION (MINS)	0
RANGE OF QUEUE DELAY - MIN	0.0
(VEH-H) MAX	0.0
RANGE OF DIVN DELAY - MIN	0.0
(VEH-H) MAX	0.0
AV ACCIDENTS PER DAY	0.00
AV QUEUE DELAY/DAY (VEH-H)	0.0
AV DIVN DELAY/DAY (VEH-H)	0.0
AV TOTAL DELAY/DAY (VEH-H)	0.0

AVERAGE ACCIDENT NUMBERS (PIA/DAY)	
MAIN ROUTE WITHOUT WORKS	0.0111
MAIN ROUTE WITH WORKS	0.0097
DIVERSION	0.2009

PIA: Personal Injury Accidents

IMPACTS ON ROAD USERS	
ROAD USER COSTS PER DAY (DOLLARS)	\$11,135
CONGESTED HOURS PER DAY*	0

*Delays Exceeding 15 Minutes

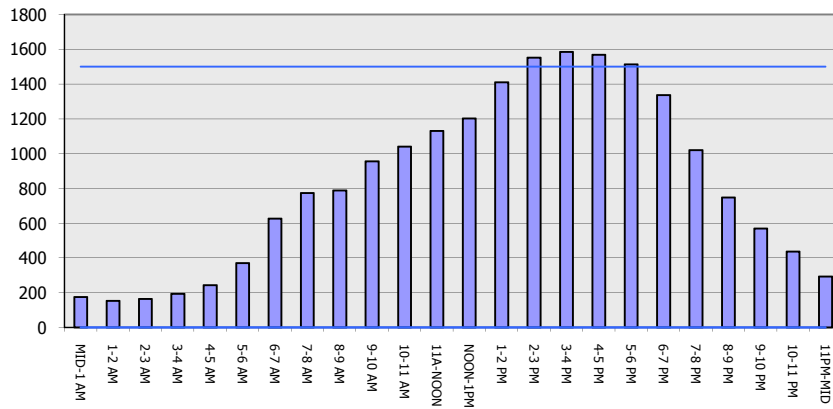
**IH 90: USH 14/61 TO USH 53
 CONTINUOUS (24 HOUR) CLOSURE
 DIVERSION ROUTE: USH 53 TO USH 14/61**

MAY
 Analyzed for 2009
 Construction Season

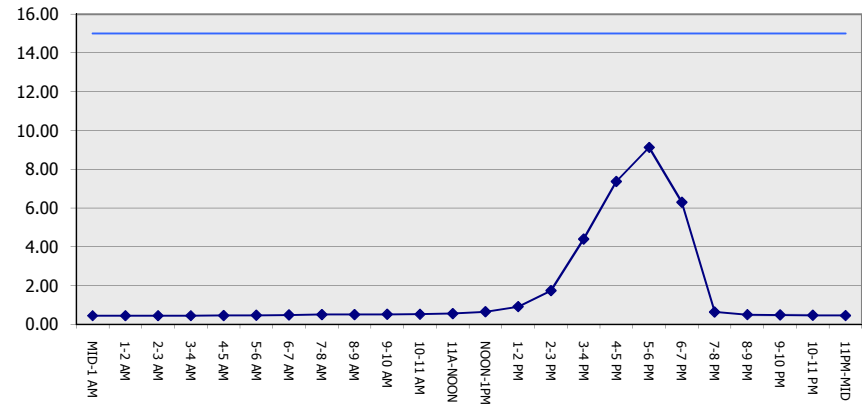
GRAPHICAL REPRESENTATION OF TRAFFIC MODEL INPUT AND OUTPUT

FRIDAY EASTBOUND DIRECTION

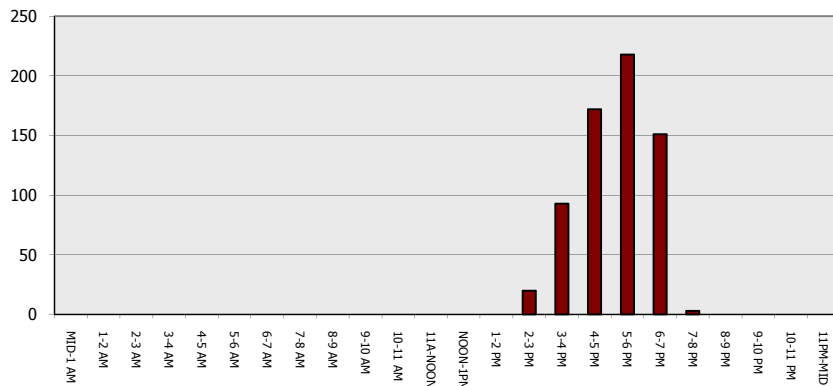
Main Route - Traffic Demand (Vehicles Per Hour)



Main Route Average Delay Per Vehicle (Minutes)



Main Route - Average Queue Length (Vehicles)



Main Route - Average Speed (MPH)

