

IH 94: STH 73 TO STH 26 (DANE AND JEFFERSON COUNTIES) CONTINUOUS (24 HOUR) CLOSURE DIVERSION ROUTE: STH 73 - USH 12 - USH 18 - STH 89	AUGUST
	Analyzed for 2009 Construction Season

SUMMARY OF TRAFFIC MODEL OUTPUT

MON-THUR WESTBOUND DIRECTION

TIME OF DAY	FLOWS AND CAPACITY IN VEH/HR						AVERAGE SPEEDS IN MPH								
	MAIN ROUTE		ALTERNATE ROUTE		SITE CAPA CITY	FLOW MAIN ROUTE	FLOW DIVER -TING	TOTAL DIVN FLOW	AV.DEL PER VEH (MINS)	AVERAGE QUEUE (VEH)	MAIN ROUTE		ALTERNATE ROUTE		
	DEMAND FLOW	PCT HEAVY	NORMAL FLOW	PCT HEAVY							WITHOUT WORK ZN	WITH WORK ZN	SITE	WITHOUT WORK ZN	WITH WORK ZN
MID-1 AM	177	0.0	24	0.0	1500	177	0	24	0.44	0	66.1	62.7	44.8	34.5	34.5
1-2 AM	123	0.0	17	0.0	1500	123	0	17	0.43	0	66.1	62.8	45.0	34.6	34.6
2-3 AM	111	0.0	15	0.0	1500	111	0	15	0.43	0	66.2	62.8	45.0	34.6	34.6
3-4 AM	101	0.0	14	0.0	1500	101	0	14	0.43	0	66.2	62.9	45.1	34.7	34.7
4-5 AM	167	0.0	22	0.0	1500	167	0	22	0.44	0	66.1	62.7	44.8	34.5	34.5
5-6 AM	356	0.0	47	0.0	1500	356	0	47	0.46	0	65.7	62.3	44.1	34.3	34.3
6-7 AM	855	0.0	114	0.0	1500	855	0	114	0.51	0	64.8	61.1	42.2	33.5	33.5
7-8 AM	1208	0.0	161	0.0	1500	1208	0	161	0.65	0	64.1	59.6	38.2	33.0	33.0
8-9 AM	1239	0.0	165	0.0	1500	1239	0	165	0.69	0	64.1	59.3	37.3	33.0	33.0
9-10 AM	1276	0.0	170	0.0	1500	1276	0	170	0.73	0	64.0	58.9	36.2	32.9	32.9
10-11 AM	1261	0.0	168	0.0	1500	1261	0	168	0.72	0	64.0	59.1	36.6	32.9	32.9
11A-NOON	1209	0.0	161	0.0	1500	1209	0	161	0.65	0	64.1	59.6	38.2	33.0	33.0
NOON-1PM	1146	0.0	153	0.0	1500	1146	0	153	0.57	0	64.3	60.2	40.2	33.1	33.1
1-2 PM	1149	0.0	153	0.0	1500	1149	0	153	0.57	0	64.3	60.2	40.2	33.1	33.1
2-3 PM	1167	0.0	156	0.0	1500	1167	0	156	0.59	0	64.2	60.1	39.6	33.0	33.0
3-4 PM	1285	0.0	172	0.0	1500	1285	0	172	0.75	0	64.0	58.9	35.9	32.9	32.9
4-5 PM	1436	0.0	191	0.0	1500	1436	0	191	0.94	0	63.7	57.4	32.2	32.7	32.7
5-6 PM	1402	0.0	187	0.0	1500	1402	0	187	0.90	0	63.8	57.7	32.9	32.7	32.7
6-7 PM	1062	0.0	141	0.0	1500	1062	0	141	0.53	0	64.4	60.7	41.5	33.2	33.2
7-8 PM	740	0.0	98	0.0	1500	740	0	98	0.49	0	65.0	61.4	42.6	33.7	33.7
8-9 PM	583	0.0	77	0.0	1500	583	0	77	0.48	0	65.3	61.8	43.2	33.9	33.9
9-10 PM	529	0.0	70	0.0	1500	529	0	70	0.47	0	65.4	61.9	43.4	34.0	34.0
10-11 PM	474	0.0	63	0.0	1500	474	0	63	0.47	0	65.5	62.0	43.6	34.1	34.1
11PM-MID	321	0.0	43	0.0	1500	321	0	43	0.45	0	65.8	62.3	44.2	34.3	34.3

----- SITE BREAKDOWN DELAYS -----	
BREAKDOWN DURATION (MINS)	0
RANGE OF QUEUE DELAY - MIN	0.0
(VEH-H) MAX	0.0
RANGE OF DIVN DELAY - MIN	0.0
(VEH-H) MAX	0.0
AV BREAKDOWNS PER DAY	0.00
AV QUEUE DELAY/DAY (VEH-H)	0.0
AV DIVN DELAY/DAY (VEH-H)	0.0
AV TOTAL DELAY/DAY (VEH-H)	0.0

----- SITE ACCIDENT DELAYS -----	
ACCIDENT DURATION (MINS)	0
RANGE OF QUEUE DELAY - MIN	0.0
(VEH-H) MAX	0.0
RANGE OF DIVN DELAY - MIN	0.0
(VEH-H) MAX	0.0
AV ACCIDENTS PER DAY	0.00
AV QUEUE DELAY/DAY (VEH-H)	0.0
AV DIVN DELAY/DAY (VEH-H)	0.0
AV TOTAL DELAY/DAY (VEH-H)	0.0

AVERAGE ACCIDENT NUMBERS (PIA/DAY)	
MAIN ROUTE WITHOUT WORKS	0.0281
MAIN ROUTE WITH WORKS	0.0268
DIVERSION	0.0765

PIA: Personal Injury Accidents

IMPACTS ON ROAD USERS	
ROAD USER COSTS PER DAY (DOLLARS)	\$2,563
CONGESTED HOURS PER DAY*	0

*Delays Exceeding 15 Minutes

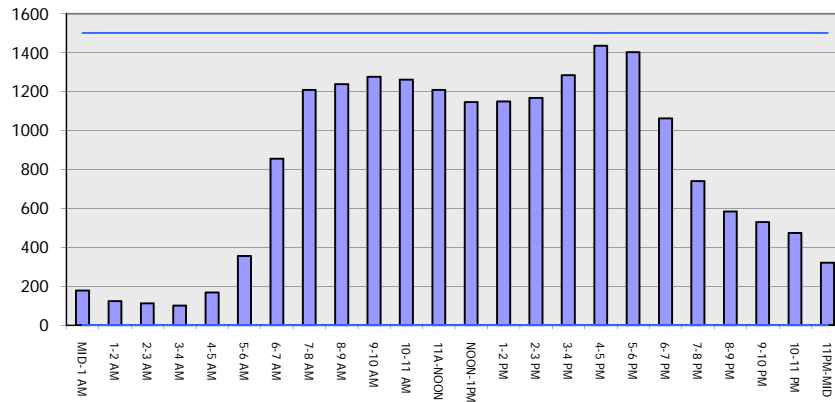
IH 94: STH 73 TO STH 26 (DANE AND JEFFERSON COUNTIES)
CONTINUOUS (24 HOUR) CLOSURE
DIVERSION ROUTE: STH 73 - USH 12 - USH 18 - STH 89

AUGUST
 Analyzed for 2009
 Construction Season

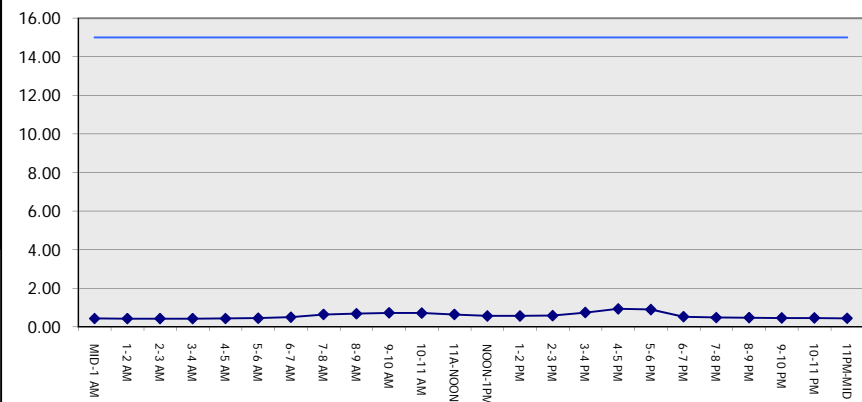
GRAPHICAL REPRESENTATION OF TRAFFIC MODEL INPUT AND OUTPUT

MON-THUR WESTBOUND DIRECTION

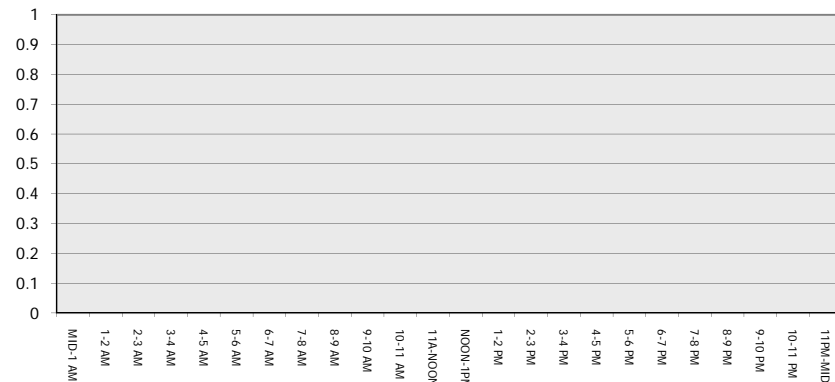
Main Route - Traffic Demand (Vehicles Per Hour)



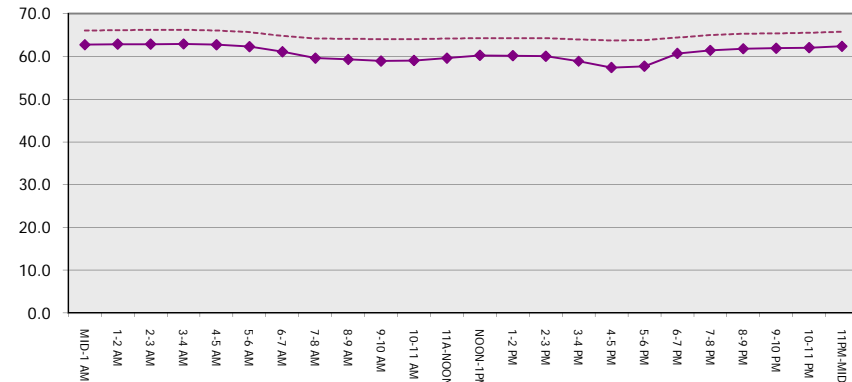
Main Route Average Delay Per Vehicle (Minutes)



Main Route - Average Queue Length (Vehicles)



Main Route - Average Speed (MPH)



IH 94: STH 73 TO STH 26 (DANE AND JEFFERSON COUNTIES) CONTINUOUS (24 HOUR) CLOSURE DIVERSION ROUTE: STH 73 - USH 12 - USH 18 - STH 89	AUGUST
	Analyzed for 2009 Construction Season

SUMMARY OF TRAFFIC MODEL OUTPUT

MON-THUR EASTBOUND DIRECTION

TIME OF DAY	FLOWS AND CAPACITY IN VEH/HR								AVERAGE SPEEDS IN MPH						
	MAIN		DIVERSION		SITE CAPA CITY	FLOW MAIN ROUTE	FLOW DIVER -TING	TOTAL DIVN FLOW	AV.DEL PER VEH (MINS)	AVERAGE QUEUE (VEH)	MAIN ROUTE		SITE	ALTERNATE ROUTE	
	DEMAND FLOW	PCT HEAVY	NORMAL FLOW	PCT HEAVY							WITHOUT WORK ZN	WITH WORK ZN		WITHOUT WORK ZN	WITH WORK ZN
MID-1 AM	162	0.0	22	0.0	1500	162	0	22	0.44	0	66.1	62.8	44.8	34.5	34.5
1-2 AM	112	0.0	15	0.0	1500	112	0	15	0.43	0	66.2	62.8	45.0	34.6	34.6
2-3 AM	94	0.0	13	0.0	1500	94	0	13	0.43	0	66.2	62.9	45.1	34.7	34.7
3-4 AM	119	0.0	16	0.0	1500	119	0	16	0.43	0	66.1	62.8	45.0	34.6	34.6
4-5 AM	225	0.0	30	0.0	1500	225	0	30	0.44	0	66.0	62.6	44.6	34.5	34.5
5-6 AM	494	0.0	66	0.0	1500	494	0	66	0.47	0	65.5	62.0	43.5	34.0	34.0
6-7 AM	852	0.0	113	0.0	1500	852	0	113	0.50	0	64.8	61.1	42.2	33.5	33.5
7-8 AM	1149	0.0	153	0.0	1500	1149	0	153	0.57	0	64.3	60.2	40.2	33.1	33.1
8-9 AM	1017	0.0	136	0.0	1500	1017	0	136	0.52	0	64.5	60.7	41.6	33.3	33.3
9-10 AM	970	0.0	129	0.0	1500	970	0	129	0.52	0	64.6	60.9	41.8	33.3	33.3
10-11 AM	1001	0.0	134	0.0	1500	1001	0	134	0.52	0	64.5	60.8	41.7	33.3	33.3
11A-NOON	1031	0.0	137	0.0	1500	1031	0	137	0.52	0	64.5	60.7	41.5	33.3	33.3
NOON-1PM	1064	0.0	141	0.0	1500	1064	0	141	0.53	0	64.4	60.7	41.5	33.2	33.2
1-2 PM	1170	0.0	156	0.0	1500	1170	0	156	0.60	0	64.2	60.0	39.4	33.0	33.0
2-3 PM	1291	0.0	172	0.0	1500	1291	0	172	0.75	0	64.0	58.8	35.8	32.9	32.9
3-4 PM	1426	0.0	190	0.0	1499	1426	0	190	0.93	0	63.7	57.5	32.4	32.7	32.7
4-5 PM	1551	0.0	206	0.0	1499	1551	0	206	1.90	24	63.5	52.0	30.8	32.5	32.5
5-6 PM	1462	0.0	195	0.0	1499	1462	0	195	2.68	45	63.7	48.5	31.2	32.7	32.7
6-7 PM	1101	0.0	146	0.0	1500	1101	0	147	0.58	0	64.3	60.2	40.4	33.2	33.2
7-8 PM	825	0.0	110	0.0	1500	825	0	110	0.50	0	64.8	61.2	42.3	33.6	33.6
8-9 PM	710	0.0	94	0.0	1500	710	0	94	0.49	0	65.1	61.5	42.7	33.7	33.7
9-10 PM	582	0.0	77	0.0	1500	582	0	77	0.48	0	65.3	61.8	43.2	33.9	33.9
10-11 PM	405	0.0	54	0.0	1500	405	0	54	0.46	0	65.6	62.2	43.8	34.2	34.2
11PM-MID	269	0.0	36	0.0	1500	269	0	36	0.45	0	65.9	62.5	44.4	34.4	34.4

----- SITE BREAKDOWN DELAYS -----	
BREAKDOWN DURATION (MINS)	0
RANGE OF QUEUE DELAY - MIN	0.0
(VEH-H) MAX	0.0
RANGE OF DIVN DELAY - MIN	0.0
(VEH-H) MAX	0.0
AV BREAKDOWNS PER DAY	0.00
AV QUEUE DELAY/DAY (VEH-H)	0.0
AV DIVN DELAY/DAY (VEH-H)	0.0
AV TOTAL DELAY/DAY (VEH-H)	0.0

----- SITE ACCIDENT DELAYS -----	
ACCIDENT DURATION (MINS)	0
RANGE OF QUEUE DELAY - MIN	0.0
(VEH-H) MAX	0.0
RANGE OF DIVN DELAY - MIN	0.0
(VEH-H) MAX	0.0
AV ACCIDENTS PER DAY	0.00
AV QUEUE DELAY/DAY (VEH-H)	0.0
AV DIVN DELAY/DAY (VEH-H)	0.0
AV TOTAL DELAY/DAY (VEH-H)	0.0

AVERAGE ACCIDENT NUMBERS (PIA/DAY)	
MAIN ROUTE WITHOUT WORKS	0.0276
MAIN ROUTE WITH WORKS	0.0264
DIVERSION	0.0752

PIA: Personal Injury Accidents

IMPACTS ON ROAD USERS	
ROAD USER COSTS PER DAY (DOLLARS)	\$3,292
CONGESTED HOURS PER DAY*	0

*Delays Exceeding 15 Minutes

**IH 94: STH 73 TO STH 26 (DANE AND JEFFERSON COUNTIES)
 CONTINUOUS (24 HOUR) CLOSURE
 DIVERSION ROUTE: STH 73 - USH 12 - USH 18 - STH 89**

AUGUST
 Analyzed for 2009
 Construction Season

GRAPHICAL REPRESENTATION OF TRAFFIC MODEL INPUT AND OUTPUT
MON-THUR EASTBOUND DIRECTION

