

**USH 151: BUS 151 TO STH 126 (IOWA AND LAFAYETTE COUNTIES)
CONTINUOUS (24 HOUR) CLOSURE
DIVERSION ROUTE: STH 126 - CTH G - CTH O**

AUGUST
Analyzed for 2009
Construction Season

SUMMARY OF TRAFFIC MODEL OUTPUT
SUNDAY SOUTHBOUND DIRECTION

TIME OF DAY	FLOWS AND CAPACITY IN VEH/HR						AVERAGE SPEEDS IN MPH								
	MAIN ROUTE		ALTERNATE ROUTE		SITE CAPA CITY	FLOW MAIN ROUTE	FLOW DIVER -TING	TOTAL DIVN FLOW	AV.DEL PER VEH (MINS)	AVERAGE QUEUE (VEH)	MAIN ROUTE		ALTERNATE ROUTE		
	DEMAND FLOW	PCT HEAVY	NORMAL FLOW	PCT HEAVY							WITHOUT WORK ZN	WITH WORK ZN	SITE	WITHOUT WORK ZN	WITH WORK ZN
MID-1 AM	52	0.0	8	0.0	1500	52	0	8	0.50	0	63.8	60.7	41.8	24.8	24.8
1-2 AM	36	0.0	5	0.0	1500	36	0	5	0.50	0	63.8	60.8	41.9	24.8	24.8
2-3 AM	20	0.0	3	0.0	1500	20	0	3	0.50	0	63.8	60.8	41.9	24.8	24.8
3-4 AM	15	0.0	2	0.0	1500	15	0	2	0.50	0	63.9	60.8	41.9	24.8	24.8
4-5 AM	13	0.0	2	0.0	1500	13	0	2	0.50	0	63.9	60.8	42.0	24.8	24.8
5-6 AM	24	0.0	4	0.0	1500	24	0	4	0.50	0	63.8	60.8	41.9	24.8	24.8
6-7 AM	43	0.0	6	0.0	1500	43	0	6	0.50	0	63.8	60.7	41.9	24.8	24.8
7-8 AM	82	0.0	13	0.0	1500	82	0	13	0.51	0	63.8	60.7	41.7	24.7	24.7
8-9 AM	186	0.0	29	0.0	1500	186	0	29	0.52	0	63.5	60.4	41.4	24.6	24.6
9-10 AM	322	0.0	50	0.0	1500	322	0	50	0.53	0	63.3	60.1	40.9	24.5	24.5
10-11 AM	440	0.0	69	0.0	1500	440	0	69	0.54	0	63.1	59.9	40.5	24.3	24.3
11A-NOON	504	0.0	79	0.0	1500	504	0	79	0.55	0	63.0	59.7	40.3	24.2	24.2
NOON-1PM	496	0.0	78	0.0	1500	496	0	78	0.55	0	63.0	59.7	40.3	24.2	24.2
1-2 PM	490	0.0	77	0.0	1500	490	0	77	0.55	0	63.0	59.7	40.3	24.2	24.2
2-3 PM	518	0.0	81	0.0	1500	518	0	81	0.55	0	62.9	59.7	40.2	24.2	24.2
3-4 PM	518	0.0	81	0.0	1500	518	0	81	0.55	0	62.9	59.7	40.2	24.2	24.2
4-5 PM	490	0.0	77	0.0	1500	490	0	77	0.55	0	63.0	59.7	40.3	24.2	24.2
5-6 PM	429	0.0	68	0.0	1500	429	0	68	0.54	0	63.1	59.9	40.6	24.3	24.3
6-7 PM	379	0.0	60	0.0	1500	379	0	60	0.53	0	63.2	60.0	40.7	24.4	24.4
7-8 PM	305	0.0	48	0.0	1500	305	0	48	0.53	0	63.3	60.2	40.9	24.5	24.5
8-9 PM	249	0.0	39	0.0	1500	249	0	39	0.52	0	63.5	60.3	41.1	24.5	24.5
9-10 PM	168	0.0	27	0.0	1500	168	0	27	0.51	0	63.6	60.5	41.4	24.7	24.7
10-11 PM	108	0.0	16	0.0	1500	108	0	16	0.51	0	63.7	60.6	41.6	24.7	24.7
11PM-MID	57	0.0	9	0.0	1500	57	0	9	0.50	0	63.8	60.7	41.8	24.8	24.8

----- SITE BREAKDOWN DELAYS -----

BREAKDOWN DURATION (MINS)	0
RANGE OF QUEUE DELAY - MIN (VEH-H) MAX	0.0
RANGE OF DIVN DELAY - MIN (VEH-H) MAX	0.0
AV BREAKDOWNS PER DAY	0.00
AV QUEUE DELAY/DAY (VEH-H)	0.0
AV DIVN DELAY/DAY (VEH-H)	0.0
AV TOTAL DELAY/DAY (VEH-H)	0.0

----- SITE ACCIDENT DELAYS -----

ACCIDENT DURATION (MINS)	0
RANGE OF QUEUE DELAY - MIN (VEH-H) MAX	0.0
RANGE OF DIVN DELAY - MIN (VEH-H) MAX	0.0
AV ACCIDENTS PER DAY	0.00
AV QUEUE DELAY/DAY (VEH-H)	0.0
AV DIVN DELAY/DAY (VEH-H)	0.0
AV TOTAL DELAY/DAY (VEH-H)	0.0

AVERAGE ACCIDENT NUMBERS (PIA/DAY)

MAIN ROUTE WITHOUT WORKS	0.0104
MAIN ROUTE WITH WORKS	0.0110
DIVERSION	0.0185

PIA: Personal Injury Accidents

IMPACTS ON ROAD USERS

ROAD USER COSTS PER DAY (DOLLARS)	\$830
CONGESTED HOURS PER DAY*	0

*Delays Exceeding 15 Minutes

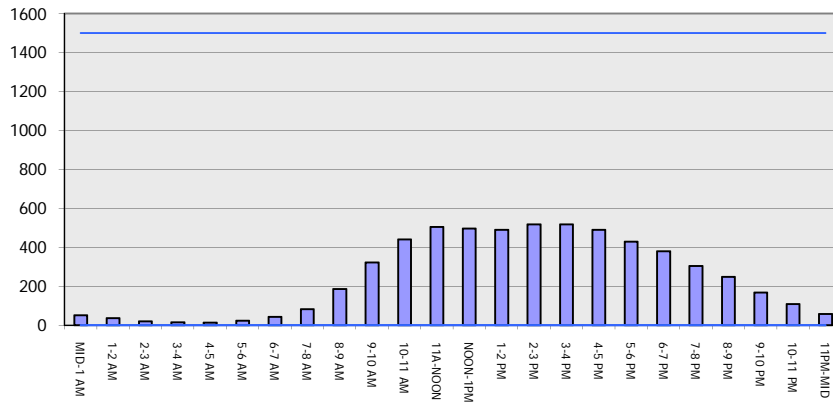
**USH 151: BUS 151 TO STH 126 (IOWA AND LAFAYETTE COUNTIES)
 CONTINUOUS (24 HOUR) CLOSURE
 DIVERSION ROUTE: STH 126 - CTH G - CTH O**

AUGUST
 Analyzed for 2009
 Construction Season

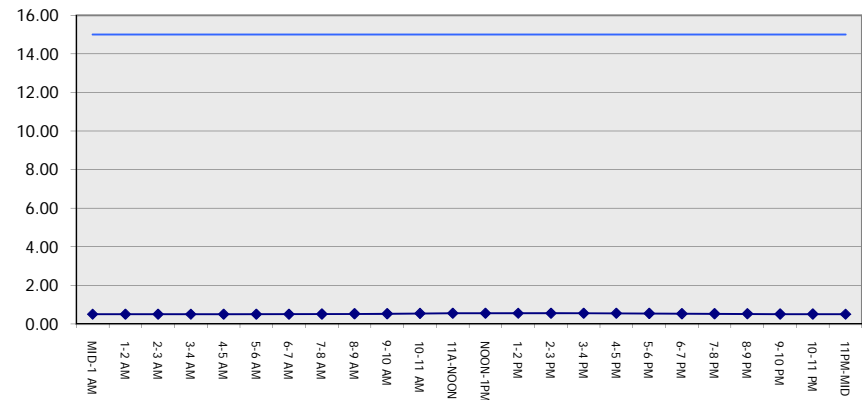
GRAPHICAL REPRESENTATION OF TRAFFIC MODEL INPUT AND OUTPUT

SUNDAY SOUTHBOUND DIRECTION

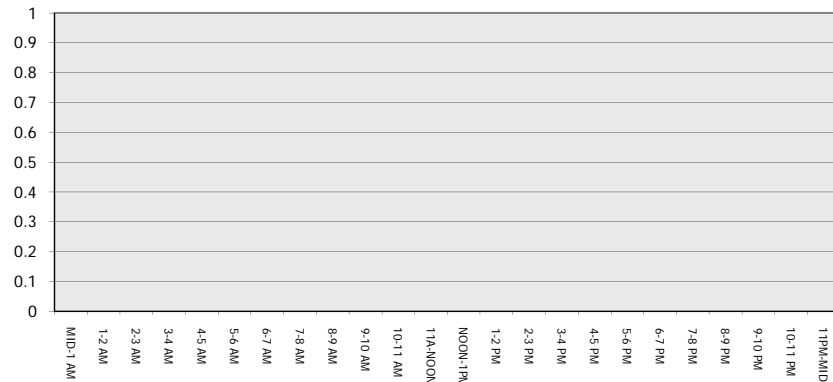
Main Route - Traffic Demand (Vehicles Per Hour)



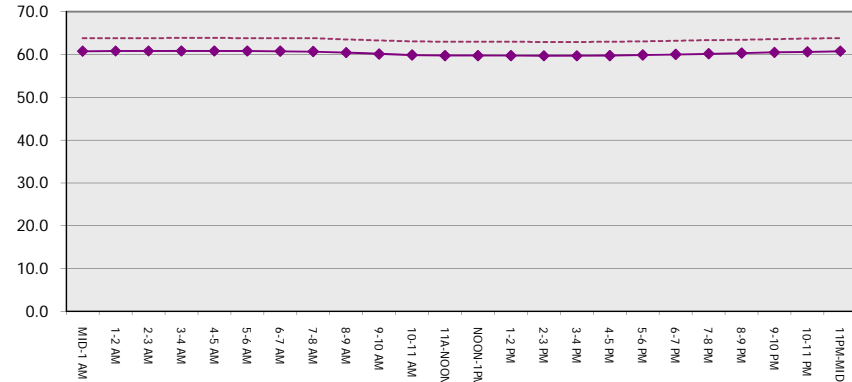
Main Route Average Delay Per Vehicle (Minutes)



Main Route - Average Queue Length (Vehicles)



Main Route - Average Speed (MPH)



USH 151: BUS 151 TO STH 126 (IOWA AND LAFAYETTE COUNTIES) CONTINUOUS (24 HOUR) CLOSURE DIVERSION ROUTE: STH 126 - CTH G - CTH O	AUGUST
	Analyzed for 2009 Construction Season

SUMMARY OF TRAFFIC MODEL OUTPUT

SUNDAY NORTHBOUND DIRECTION

TIME OF DAY	FLOWS AND CAPACITY IN VEH/HR								AVERAGE SPEEDS IN MPH						
	MAIN		DIVERSION		SITE CAPA CITY	FLOW MAIN ROUTE	FLOW DIVER -TING	TOTAL DIVN FLOW	AV.DEL PER VEH (MINS)	AVERAGE QUEUE (VEH)	MAIN ROUTE		SITE	ALTERNATE ROUTE	
	DEMAND FLOW	PCT HEAVY	NORMAL FLOW	PCT HEAVY							WITHOUT WORK ZN	WITH WORK ZN		WITHOUT WORK ZN	WITH WORK ZN
MID-1 AM	70	0.0	11	0.0	1500	70	0	11	0.51	0	63.8	60.7	41.7	24.8	24.8
1-2 AM	46	0.0	7	0.0	1500	46	0	7	0.50	0	63.8	60.7	41.9	24.8	24.8
2-3 AM	28	0.0	4	0.0	1500	28	0	4	0.50	0	63.8	60.8	41.9	24.8	24.8
3-4 AM	20	0.0	3	0.0	1500	20	0	3	0.50	0	63.8	60.8	41.9	24.8	24.8
4-5 AM	21	0.0	3	0.0	1500	21	0	3	0.50	0	63.8	60.8	41.9	24.8	24.8
5-6 AM	33	0.0	5	0.0	1500	33	0	5	0.50	0	63.8	60.8	41.9	24.8	24.8
6-7 AM	53	0.0	8	0.0	1500	53	0	8	0.50	0	63.8	60.7	41.8	24.8	24.8
7-8 AM	99	0.0	15	0.0	1500	99	0	15	0.51	0	63.7	60.6	41.7	24.7	24.7
8-9 AM	174	0.0	28	0.0	1500	174	0	28	0.52	0	63.6	60.5	41.4	24.7	24.7
9-10 AM	278	0.0	43	0.0	1500	278	0	43	0.53	0	63.4	60.2	41.0	24.5	24.5
10-11 AM	400	0.0	63	0.0	1500	400	0	63	0.54	0	63.2	60.0	40.6	24.3	24.3
11A-NOON	457	0.0	72	0.0	1500	457	0	72	0.54	0	63.0	59.9	40.4	24.3	24.3
NOON-1PM	431	0.0	68	0.0	1500	431	0	68	0.54	0	63.1	59.9	40.5	24.3	24.3
1-2 PM	448	0.0	71	0.0	1500	448	0	71	0.54	0	63.1	59.9	40.5	24.3	24.3
2-3 PM	474	0.0	75	0.0	1500	474	0	75	0.54	0	63.0	59.8	40.4	24.3	24.3
3-4 PM	471	0.0	74	0.0	1500	471	0	74	0.54	0	63.0	59.8	40.4	24.3	24.3
4-5 PM	470	0.0	74	0.0	1500	470	0	74	0.54	0	63.0	59.8	40.4	24.3	24.3
5-6 PM	413	0.0	65	0.0	1500	413	0	65	0.54	0	63.2	59.9	40.6	24.3	24.3
6-7 PM	350	0.0	56	0.0	1500	350	0	56	0.53	0	63.3	60.1	40.8	24.4	24.4
7-8 PM	318	0.0	50	0.0	1500	318	0	50	0.53	0	63.3	60.1	40.9	24.5	24.5
8-9 PM	270	0.0	42	0.0	1500	270	0	42	0.52	0	63.4	60.2	41.0	24.5	24.5
9-10 PM	196	0.0	31	0.0	1500	196	0	31	0.52	0	63.5	60.4	41.3	24.6	24.6
10-11 PM	147	0.0	23	0.0	1500	147	0	23	0.51	0	63.7	60.5	41.5	24.7	24.7
11PM-MID	81	0.0	12	0.0	1500	81	0	12	0.51	0	63.8	60.7	41.7	24.7	24.7

----- SITE BREAKDOWN DELAYS -----	
BREAKDOWN DURATION (MINS)	0
RANGE OF QUEUE DELAY - MIN	0.0
(VEH-H) MAX	0.0
RANGE OF DIVN DELAY - MIN	0.0
(VEH-H) MAX	0.0
AV BREAKDOWNS PER DAY	0.00
AV QUEUE DELAY/DAY (VEH-H)	0.0
AV DIVN DELAY/DAY (VEH-H)	0.0
AV TOTAL DELAY/DAY (VEH-H)	0.0

----- SITE ACCIDENT DELAYS -----	
ACCIDENT DURATION (MINS)	0
RANGE OF QUEUE DELAY - MIN	0.0
(VEH-H) MAX	0.0
RANGE OF DIVN DELAY - MIN	0.0
(VEH-H) MAX	0.0
AV ACCIDENTS PER DAY	0.00
AV QUEUE DELAY/DAY (VEH-H)	0.0
AV DIVN DELAY/DAY (VEH-H)	0.0
AV TOTAL DELAY/DAY (VEH-H)	0.0

AVERAGE ACCIDENT NUMBERS (PIA/DAY)	
MAIN ROUTE WITHOUT WORKS	0.0100
MAIN ROUTE WITH WORKS	0.0107
DIVERSION	0.0179

PIA: Personal Injury Accidents

IMPACTS ON ROAD USERS	
ROAD USER COSTS PER DAY (DOLLARS)	\$794
CONGESTED HOURS PER DAY*	0

*Delays Exceeding 15 Minutes

**USH 151: BUS 151 TO STH 126 (IOWA AND LAFAYETTE COUNTIES)
 CONTINUOUS (24 HOUR) CLOSURE
 DIVERSION ROUTE: STH 126 - CTH G - CTH O**

AUGUST
 Analyzed for 2009
 Construction Season

GRAPHICAL REPRESENTATION OF TRAFFIC MODEL INPUT AND OUTPUT
SUNDAY NORTHBOUND DIRECTION

