

**USH 151: BUS 151 TO STH 126 (IOWA AND LAFAYETTE COUNTIES)
CONTINUOUS (24 HOUR) CLOSURE
DIVERSION ROUTE: STH 126 - CTH G - CTH O**

AUGUST

Analyzed for 2009
Construction Season

SUMMARY OF TRAFFIC MODEL OUTPUT

MON-THUR SOUTHBOUND DIRECTION

TIME OF DAY	FLOWS AND CAPACITY IN VEH/HR						AVERAGE SPEEDS IN MPH								
	MAIN ROUTE		ALTERNATE ROUTE		SITE CAPA CITY	FLOW MAIN ROUTE	FLOW DIVER -TING	TOTAL DIVN FLOW	AV.DEL PER VEH (MINS)	AVERAGE QUEUE (VEH)	MAIN ROUTE		ALTERNATE ROUTE		
	DEMAND FLOW	PCT HEAVY	NORMAL FLOW	PCT HEAVY							WITHOUT WORK ZN	WITH WORK ZN	SITE	WITHOUT WORK ZN	WITH WORK ZN
MID-1 AM	45	0.0	7	0.0	1500	45	0	7	0.50	0	63.8	60.7	41.9	24.8	24.8
1-2 AM	27	0.0	4	0.0	1500	27	0	4	0.50	0	63.8	60.8	41.9	24.8	24.8
2-3 AM	23	0.0	4	0.0	1500	23	0	4	0.50	0	63.8	60.8	41.9	24.8	24.8
3-4 AM	43	0.0	7	0.0	1500	43	0	7	0.50	0	63.8	60.7	41.9	24.8	24.8
4-5 AM	60	0.0	9	0.0	1500	60	0	9	0.50	0	63.8	60.7	41.8	24.8	24.8
5-6 AM	110	0.0	18	0.0	1500	110	0	18	0.51	0	63.7	60.6	41.6	24.7	24.7
6-7 AM	189	0.0	30	0.0	1500	189	0	30	0.52	0	63.5	60.4	41.4	24.6	24.6
7-8 AM	254	0.0	40	0.0	1500	254	0	40	0.52	0	63.4	60.3	41.1	24.5	24.5
8-9 AM	263	0.0	41	0.0	1500	263	0	41	0.52	0	63.4	60.2	41.1	24.5	24.5
9-10 AM	288	0.0	45	0.0	1500	288	0	45	0.53	0	63.3	60.2	41.0	24.5	24.5
10-11 AM	312	0.0	49	0.0	1500	312	0	49	0.53	0	63.3	60.2	40.9	24.5	24.5
11A-NOON	326	0.0	52	0.0	1500	326	0	52	0.53	0	63.3	60.1	40.9	24.5	24.5
NOON-1PM	323	0.0	50	0.0	1500	323	0	50	0.53	0	63.3	60.1	40.9	24.5	24.5
1-2 PM	332	0.0	53	0.0	1500	332	0	53	0.53	0	63.3	60.1	40.9	24.5	24.5
2-3 PM	358	0.0	57	0.0	1500	358	0	57	0.53	0	63.2	60.1	40.7	24.4	24.4
3-4 PM	463	0.0	73	0.0	1500	463	0	73	0.54	0	63.0	59.8	40.4	24.3	24.3
4-5 PM	422	0.0	67	0.0	1500	422	0	67	0.54	0	63.1	59.9	40.6	24.3	24.3
5-6 PM	416	0.0	66	0.0	1500	416	0	66	0.54	0	63.2	59.9	40.6	24.3	24.3
6-7 PM	308	0.0	48	0.0	1500	308	0	48	0.53	0	63.3	60.2	40.9	24.5	24.5
7-8 PM	218	0.0	34	0.0	1500	218	0	34	0.52	0	63.5	60.4	41.2	24.6	24.6
8-9 PM	177	0.0	28	0.0	1500	177	0	28	0.52	0	63.6	60.5	41.4	24.7	24.7
9-10 PM	138	0.0	22	0.0	1500	138	0	22	0.51	0	63.7	60.5	41.5	24.7	24.7
10-11 PM	89	0.0	14	0.0	1500	89	0	14	0.51	0	63.7	60.7	41.7	24.7	24.7
11PM-MID	116	0.0	19	0.0	1500	116	0	19	0.51	0	63.7	60.6	41.6	24.7	24.7

----- SITE BREAKDOWN DELAYS -----	
BREAKDOWN DURATION (MINS)	0
RANGE OF QUEUE DELAY - MIN (VEH-H) MAX	0.0
RANGE OF DIVN DELAY - MIN (VEH-H) MAX	0.0
AV BREAKDOWNS PER DAY	0.00
AV QUEUE DELAY/DAY (VEH-H)	0.0
AV DIVN DELAY/DAY (VEH-H)	0.0
AV TOTAL DELAY/DAY (VEH-H)	0.0

----- SITE ACCIDENT DELAYS -----	
ACCIDENT DURATION (MINS)	0
RANGE OF QUEUE DELAY - MIN (VEH-H) MAX	0.0
RANGE OF DIVN DELAY - MIN (VEH-H) MAX	0.0
AV ACCIDENTS PER DAY	0.00
AV QUEUE DELAY/DAY (VEH-H)	0.0
AV DIVN DELAY/DAY (VEH-H)	0.0
AV TOTAL DELAY/DAY (VEH-H)	0.0

AVERAGE ACCIDENT NUMBERS (PIA/DAY)	
MAIN ROUTE WITHOUT WORKS	0.0093
MAIN ROUTE WITH WORKS	0.0098
DIVERSION	0.0165

PIA: Personal Injury Accidents

IMPACTS ON ROAD USERS	
ROAD USER COSTS PER DAY (DOLLARS)	\$566
CONGESTED HOURS PER DAY*	0

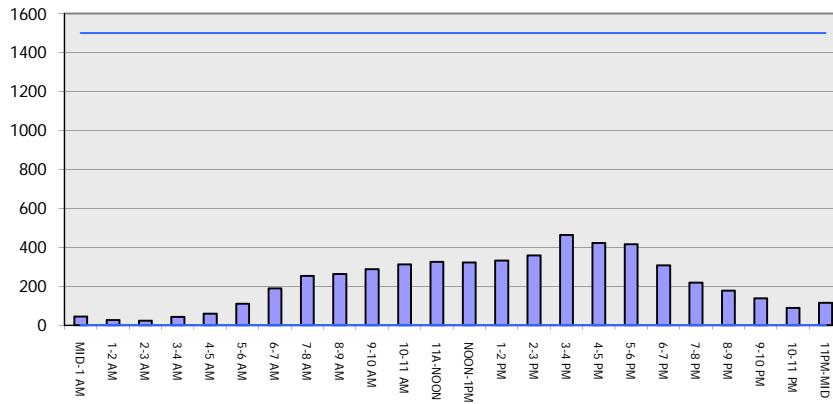
*Delays Exceeding 15 Minutes

USH 151: BUS 151 TO STH 126 (IOWA AND LAFAYETTE COUNTIES)
CONTINUOUS (24 HOUR) CLOSURE
DIVERSION ROUTE: STH 126 - CTH G - CTH O

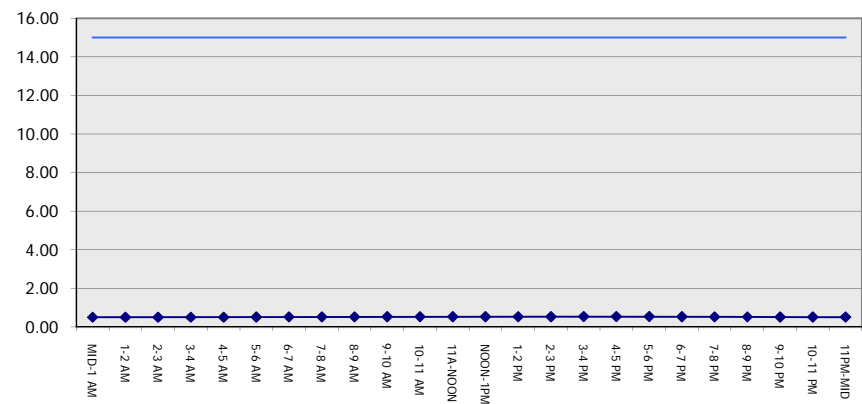
AUGUST
 Analyzed for 2009
 Construction Season

GRAPHICAL REPRESENTATION OF TRAFFIC MODEL INPUT AND OUTPUT
MON-THUR SOUTHBOUND DIRECTION

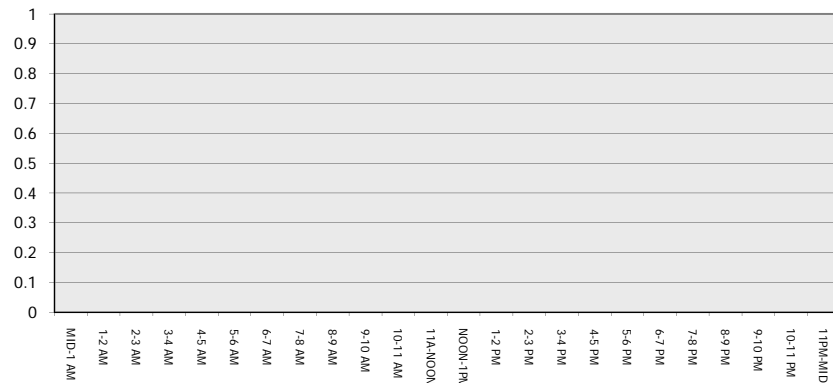
Main Route - Traffic Demand (Vehicles Per Hour)



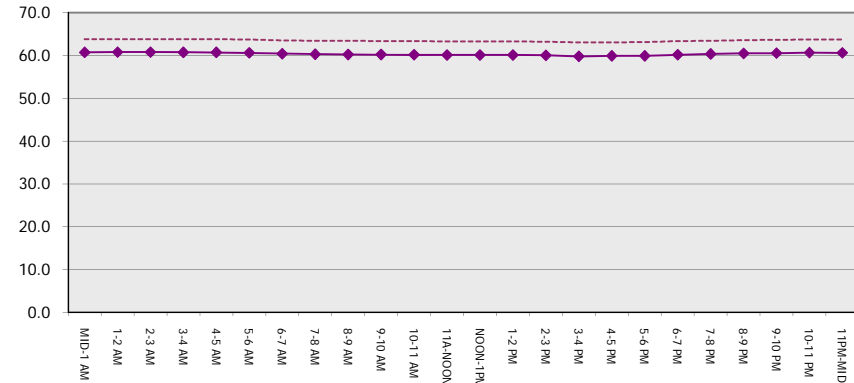
Main Route Average Delay Per Vehicle (Minutes)



Main Route - Average Queue Length (Vehicles)



Main Route - Average Speed (MPH)



USH 151: BUS 151 TO STH 126 (IOWA AND LAFAYETTE COUNTIES) CONTINUOUS (24 HOUR) CLOSURE DIVERSION ROUTE: STH 126 - CTH G - CTH O	AUGUST
	Analyzed for 2009 Construction Season

SUMMARY OF TRAFFIC MODEL OUTPUT

MON-THUR NORTHBOUND DIRECTION

TIME OF DAY	FLOWS AND CAPACITY IN VEH/HR								AVERAGE SPEEDS IN MPH						
	MAIN		DIVERSION		SITE CAPA CITY	FLOW MAIN ROUTE	FLOW DIVER -TING	TOTAL DIVN FLOW	AV.DEL PER VEH (MINS)	AVERAGE QUEUE (VEH)	MAIN ROUTE		SITE	ALTERNATE ROUTE	
	DEMAND FLOW	PCT HEAVY	NORMAL FLOW	PCT HEAVY							WITHOUT WORK ZN	WITH WORK ZN		WITHOUT WORK ZN	WITH WORK ZN
MID-1 AM	54	0.0	8	0.0	1500	54	0	8	0.50	0	63.8	60.7	41.8	24.8	24.8
1-2 AM	39	0.0	6	0.0	1500	39	0	6	0.50	0	63.8	60.7	41.9	24.8	24.8
2-3 AM	39	0.0	6	0.0	1500	39	0	6	0.50	0	63.8	60.7	41.9	24.8	24.8
3-4 AM	63	0.0	10	0.0	1500	63	0	10	0.50	0	63.8	60.7	41.8	24.8	24.8
4-5 AM	86	0.0	13	0.0	1500	86	0	13	0.51	0	63.7	60.7	41.7	24.7	24.7
5-6 AM	161	0.0	26	0.0	1500	161	0	26	0.51	0	63.6	60.5	41.4	24.7	24.7
6-7 AM	307	0.0	48	0.0	1500	307	0	48	0.53	0	63.3	60.2	40.9	24.5	24.5
7-8 AM	321	0.0	50	0.0	1500	321	0	50	0.53	0	63.3	60.1	40.9	24.5	24.5
8-9 AM	286	0.0	45	0.0	1500	286	0	45	0.53	0	63.3	60.2	41.0	24.5	24.5
9-10 AM	296	0.0	46	0.0	1500	296	0	46	0.53	0	63.3	60.2	41.0	24.5	24.5
10-11 AM	313	0.0	49	0.0	1500	313	0	49	0.53	0	63.3	60.2	40.9	24.5	24.5
11A-NOON	316	0.0	49	0.0	1500	316	0	49	0.53	0	63.3	60.2	40.9	24.5	24.5
NOON-1PM	314	0.0	49	0.0	1500	314	0	49	0.53	0	63.3	60.2	40.9	24.5	24.5
1-2 PM	352	0.0	56	0.0	1500	352	0	56	0.53	0	63.2	60.1	40.8	24.4	24.4
2-3 PM	390	0.0	62	0.0	1500	390	0	62	0.54	0	63.2	60.0	40.7	24.3	24.3
3-4 PM	375	0.0	59	0.0	1500	375	0	59	0.53	0	63.2	60.0	40.7	24.4	24.4
4-5 PM	373	0.0	59	0.0	1500	373	0	59	0.53	0	63.2	60.0	40.7	24.4	24.4
5-6 PM	344	0.0	55	0.0	1500	344	0	55	0.53	0	63.3	60.1	40.8	24.4	24.4
6-7 PM	259	0.0	41	0.0	1500	259	0	41	0.52	0	63.4	60.3	41.1	24.5	24.5
7-8 PM	207	0.0	33	0.0	1500	207	0	33	0.52	0	63.5	60.4	41.3	24.6	24.6
8-9 PM	199	0.0	31	0.0	1500	199	0	31	0.52	0	63.5	60.4	41.3	24.6	24.6
9-10 PM	162	0.0	26	0.0	1500	162	0	26	0.51	0	63.6	60.5	41.4	24.7	24.7
10-11 PM	125	0.0	20	0.0	1500	125	0	20	0.51	0	63.7	60.5	41.5	24.7	24.7
11PM-MID	74	0.0	11	0.0	1500	74	0	11	0.51	0	63.8	60.7	41.7	24.8	24.8

----- SITE BREAKDOWN DELAYS -----	
BREAKDOWN DURATION (MINS)	0
RANGE OF QUEUE DELAY - MIN	0.0
(VEH-H) MAX	0.0
RANGE OF DIVN DELAY - MIN	0.0
(VEH-H) MAX	0.0
AV BREAKDOWNS PER DAY	0.00
AV QUEUE DELAY/DAY (VEH-H)	0.0
AV DIVN DELAY/DAY (VEH-H)	0.0
AV TOTAL DELAY/DAY (VEH-H)	0.0

----- SITE ACCIDENT DELAYS -----	
ACCIDENT DURATION (MINS)	0
RANGE OF QUEUE DELAY - MIN	0.0
(VEH-H) MAX	0.0
RANGE OF DIVN DELAY - MIN	0.0
(VEH-H) MAX	0.0
AV ACCIDENTS PER DAY	0.00
AV QUEUE DELAY/DAY (VEH-H)	0.0
AV DIVN DELAY/DAY (VEH-H)	0.0
AV TOTAL DELAY/DAY (VEH-H)	0.0

AVERAGE ACCIDENT NUMBERS (PIA/DAY)	
MAIN ROUTE WITHOUT WORKS	0.0095
MAIN ROUTE WITH WORKS	0.0101
DIVERSION	0.0170

PIA: Personal Injury Accidents

IMPACTS ON ROAD USERS	
ROAD USER COSTS PER DAY (DOLLARS)	\$581
CONGESTED HOURS PER DAY*	0

*Delays Exceeding 15 Minutes

**USH 151: BUS 151 TO STH 126 (IOWA AND LAFAYETTE COUNTIES)
 CONTINUOUS (24 HOUR) CLOSURE
 DIVERSION ROUTE: STH 126 - CTH G - CTH O**

AUGUST
 Analyzed for 2009
 Construction Season

GRAPHICAL REPRESENTATION OF TRAFFIC MODEL INPUT AND OUTPUT
MON-THUR NORTHBOUND DIRECTION

