

USH 151: BUS 151 TO STH 126 (IOWA AND LAFAYETTE COUNTIES) CONTINUOUS (24 HOUR) CLOSURE DIVERSION ROUTE: STH 126 - CTH G - CTH O	MAY
	Analyzed for 2009 Construction Season

SUMMARY OF TRAFFIC MODEL OUTPUT

SATURDAY SOUTHBOUND DIRECTION

TIME OF DAY	FLOWS AND CAPACITY IN VEH/HR								AVERAGE SPEEDS IN MPH						
	MAIN ROUTE		ALTERNATE ROUTE		SITE CAPA CITY	FLOW MAIN ROUTE	FLOW DIVER -TING	TOTAL DIVN FLOW	AV.DEL PER VEH (MINS)	AVERAGE QUEUE (VEH)	MAIN ROUTE		SITE	ALTERNATE ROUTE	
	DEMAND FLOW	PCT HEAVY	NORMAL FLOW	PCT HEAVY							WITHOUT WORK ZN	WITH WORK ZN		WITHOUT WORK ZN	WITH WORK ZN
MID-1 AM	59	0.0	9	0.0	1500	59	0	9	0.50	0	63.8	60.7	41.8	24.8	24.8
1-2 AM	33	0.0	5	0.0	1500	33	0	5	0.50	0	63.8	60.8	41.9	24.8	24.8
2-3 AM	22	0.0	3	0.0	1500	22	0	3	0.50	0	63.8	60.8	41.9	24.8	24.8
3-4 AM	39	0.0	6	0.0	1500	39	0	6	0.50	0	63.8	60.7	41.9	24.8	24.8
4-5 AM	26	0.0	4	0.0	1500	26	0	4	0.50	0	63.8	60.8	41.9	24.8	24.8
5-6 AM	60	0.0	9	0.0	1500	60	0	9	0.50	0	63.8	60.7	41.8	24.8	24.8
6-7 AM	82	0.0	13	0.0	1500	82	0	13	0.51	0	63.8	60.7	41.7	24.7	24.7
7-8 AM	154	0.0	25	0.0	1500	154	0	25	0.51	0	63.6	60.5	41.5	24.7	24.7
8-9 AM	291	0.0	46	0.0	1500	291	0	46	0.53	0	63.3	60.2	41.0	24.5	24.5
9-10 AM	344	0.0	55	0.0	1500	344	0	55	0.53	0	63.3	60.1	40.8	24.4	24.4
10-11 AM	420	0.0	66	0.0	1500	420	0	66	0.54	0	63.1	59.9	40.6	24.3	24.3
11A-NOON	420	0.0	66	0.0	1500	420	0	66	0.54	0	63.1	59.9	40.6	24.3	24.3
NOON-1PM	388	0.0	61	0.0	1500	388	0	61	0.54	0	63.2	60.0	40.7	24.3	24.3
1-2 PM	363	0.0	58	0.0	1500	363	0	58	0.53	0	63.2	60.1	40.7	24.4	24.4
2-3 PM	319	0.0	50	0.0	1500	319	0	50	0.53	0	63.3	60.1	40.9	24.5	24.5
3-4 PM	344	0.0	55	0.0	1500	344	0	55	0.53	0	63.3	60.1	40.8	24.4	24.4
4-5 PM	328	0.0	51	0.0	1500	328	0	51	0.53	0	63.3	60.1	40.9	24.5	24.5
5-6 PM	311	0.0	49	0.0	1500	311	0	49	0.53	0	63.3	60.2	40.9	24.5	24.5
6-7 PM	256	0.0	40	0.0	1500	256	0	40	0.52	0	63.4	60.3	41.1	24.5	24.5
7-8 PM	221	0.0	35	0.0	1500	221	0	35	0.52	0	63.5	60.4	41.2	24.6	24.6
8-9 PM	178	0.0	28	0.0	1500	178	0	28	0.52	0	63.6	60.4	41.4	24.7	24.7
9-10 PM	135	0.0	22	0.0	1500	135	0	22	0.51	0	63.7	60.5	41.5	24.7	24.7
10-11 PM	102	0.0	16	0.0	1500	102	0	16	0.51	0	63.7	60.6	41.7	24.7	24.7
11PM-MID	64	0.0	10	0.0	1500	64	0	10	0.50	0	63.8	60.7	41.8	24.8	24.8

----- SITE BREAKDOWN DELAYS -----	
BREAKDOWN DURATION (MINS)	0
RANGE OF QUEUE DELAY - MIN (VEH-H) MAX	0.0
RANGE OF DIVN DELAY - MIN (VEH-H) MAX	0.0
AV BREAKDOWNS PER DAY	0.00
AV QUEUE DELAY/DAY (VEH-H)	0.0
AV DIVN DELAY/DAY (VEH-H)	0.0
AV TOTAL DELAY/DAY (VEH-H)	0.0

----- SITE ACCIDENT DELAYS -----	
ACCIDENT DURATION (MINS)	0
RANGE OF QUEUE DELAY - MIN (VEH-H) MAX	0.0
RANGE OF DIVN DELAY - MIN (VEH-H) MAX	0.0
AV ACCIDENTS PER DAY	0.00
AV QUEUE DELAY/DAY (VEH-H)	0.0
AV DIVN DELAY/DAY (VEH-H)	0.0
AV TOTAL DELAY/DAY (VEH-H)	0.0

AVERAGE ACCIDENT NUMBERS (PIA/DAY)	
MAIN ROUTE WITHOUT WORKS	0.0087
MAIN ROUTE WITH WORKS	0.0092
DIVERSION	0.0155

PIA: Personal Injury Accidents

IMPACTS ON ROAD USERS	
ROAD USER COSTS PER DAY (DOLLARS)	\$667
CONGESTED HOURS PER DAY*	0

*Delays Exceeding 15 Minutes

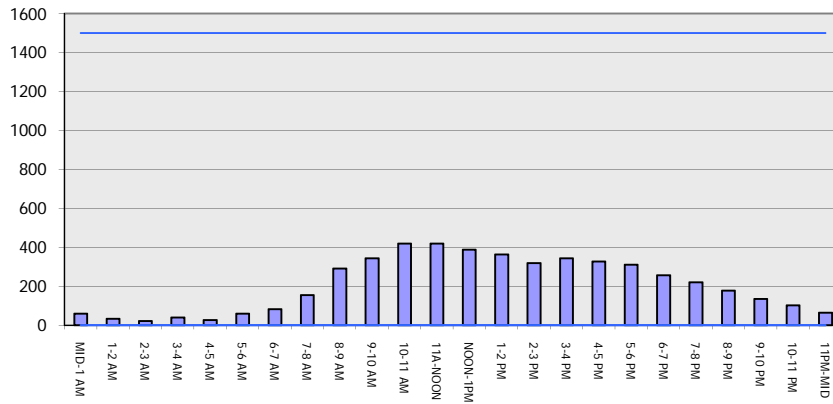
USH 151: BUS 151 TO STH 126 (IOWA AND LAFAYETTE COUNTIES)
CONTINUOUS (24 HOUR) CLOSURE
DIVERSION ROUTE: STH 126 - CTH G - CTH O

MAY
 Analyzed for 2009
 Construction Season

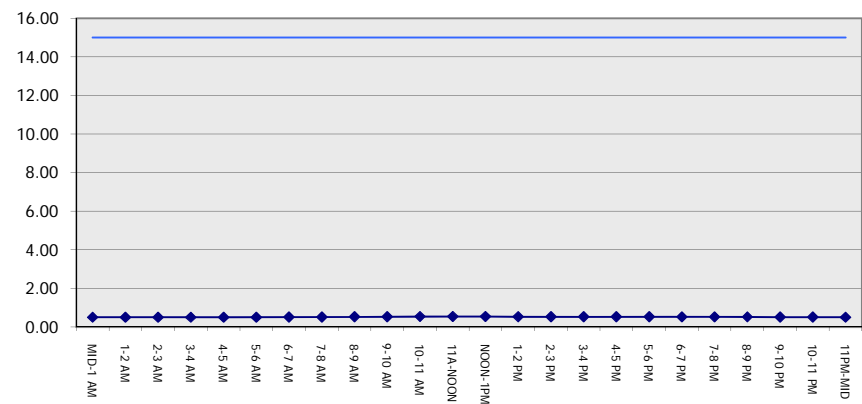
GRAPHICAL REPRESENTATION OF TRAFFIC MODEL INPUT AND OUTPUT

SATURDAY SOUTHBOUND DIRECTION

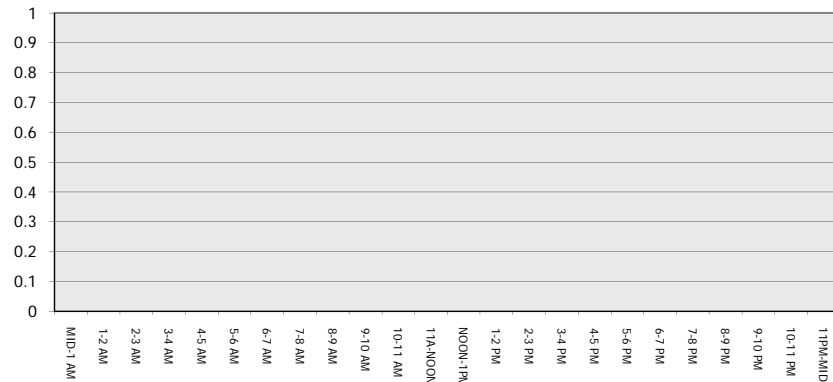
Main Route - Traffic Demand (Vehicles Per Hour)



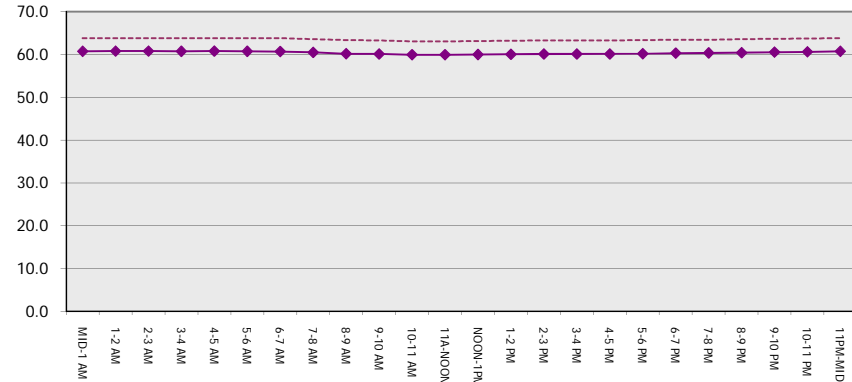
Main Route Average Delay Per Vehicle (Minutes)



Main Route - Average Queue Length (Vehicles)



Main Route - Average Speed (MPH)



**USH 151: BUS 151 TO STH 126 (IOWA AND LAFAYETTE COUNTIES)
CONTINUOUS (24 HOUR) CLOSURE
DIVERSION ROUTE: STH 126 - CTH G - CTH O**

MAY
Analyzed for 2009
Construction Season

SUMMARY OF TRAFFIC MODEL OUTPUT
SATURDAY NORTHBOUND DIRECTION

TIME OF DAY	FLOWS AND CAPACITY IN VEH/HR								AVERAGE SPEEDS IN MPH						
	MAIN		DIVERSION		SITE CAPA CITY	FLOW MAIN ROUTE	FLOW DIVER -TING	TOTAL DIVN FLOW	AV.DEL PER VEH (MINS)	AVERAGE QUEUE (VEH)	MAIN ROUTE		SITE	ALTERNATE ROUTE	
	DEMAND FLOW	PCT HEAVY	NORMAL FLOW	PCT HEAVY							WITHOUT WORK ZN	WITH WORK ZN		WITHOUT WORK ZN	WITH WORK ZN
MID-1 AM	64	0.0	10	0.0	1500	64	0	10	0.50	0	63.8	60.7	41.8	24.8	24.8
1-2 AM	46	0.0	7	0.0	1500	46	0	7	0.50	0	63.8	60.7	41.9	24.8	24.8
2-3 AM	31	0.0	5	0.0	1500	31	0	5	0.50	0	63.8	60.8	41.9	24.8	24.8
3-4 AM	33	0.0	5	0.0	1500	33	0	5	0.50	0	63.8	60.8	41.9	24.8	24.8
4-5 AM	52	0.0	8	0.0	1500	52	0	8	0.50	0	63.8	60.7	41.8	24.8	24.8
5-6 AM	63	0.0	10	0.0	1500	63	0	10	0.50	0	63.8	60.7	41.8	24.8	24.8
6-7 AM	101	0.0	16	0.0	1500	101	0	16	0.51	0	63.7	60.6	41.7	24.7	24.7
7-8 AM	159	0.0	25	0.0	1500	159	0	25	0.51	0	63.6	60.5	41.4	24.7	24.7
8-9 AM	258	0.0	40	0.0	1500	258	0	40	0.52	0	63.4	60.3	41.1	24.5	24.5
9-10 AM	317	0.0	49	0.0	1500	317	0	49	0.53	0	63.3	60.1	40.9	24.5	24.5
10-11 AM	356	0.0	56	0.0	1500	356	0	56	0.53	0	63.2	60.1	40.8	24.4	24.4
11A-NOON	360	0.0	57	0.0	1500	360	0	57	0.53	0	63.2	60.1	40.7	24.4	24.4
NOON-1PM	334	0.0	53	0.0	1500	334	0	53	0.53	0	63.3	60.1	40.9	24.5	24.5
1-2 PM	324	0.0	51	0.0	1500	324	0	51	0.53	0	63.3	60.1	40.9	24.5	24.5
2-3 PM	318	0.0	50	0.0	1500	318	0	50	0.53	0	63.3	60.1	40.9	24.5	24.5
3-4 PM	337	0.0	54	0.0	1500	337	0	54	0.53	0	63.3	60.1	40.9	24.4	24.4
4-5 PM	351	0.0	56	0.0	1500	351	0	56	0.53	0	63.2	60.1	40.8	24.4	24.4
5-6 PM	294	0.0	46	0.0	1500	294	0	46	0.53	0	63.3	60.2	41.0	24.5	24.5
6-7 PM	258	0.0	40	0.0	1500	258	0	40	0.52	0	63.4	60.3	41.1	24.5	24.5
7-8 PM	230	0.0	36	0.0	1500	230	0	36	0.52	0	63.5	60.4	41.2	24.6	24.6
8-9 PM	197	0.0	31	0.0	1500	197	0	31	0.52	0	63.5	60.4	41.3	24.6	24.6
9-10 PM	187	0.0	30	0.0	1500	187	0	30	0.52	0	63.5	60.4	41.4	24.6	24.6
10-11 PM	124	0.0	20	0.0	1500	124	0	20	0.51	0	63.7	60.5	41.5	24.7	24.7
11PM-MID	92	0.0	14	0.0	1500	92	0	14	0.51	0	63.7	60.7	41.7	24.7	24.7

----- SITE BREAKDOWN DELAYS -----	
BREAKDOWN DURATION (MINS)	0
RANGE OF QUEUE DELAY - MIN	0.0
(VEH-H) MAX	0.0
RANGE OF DIVN DELAY - MIN	0.0
(VEH-H) MAX	0.0
AV BREAKDOWNS PER DAY	0.00
AV QUEUE DELAY/DAY (VEH-H)	0.0
AV DIVN DELAY/DAY (VEH-H)	0.0
AV TOTAL DELAY/DAY (VEH-H)	0.0

----- SITE ACCIDENT DELAYS -----	
ACCIDENT DURATION (MINS)	0
RANGE OF QUEUE DELAY - MIN	0.0
(VEH-H) MAX	0.0
RANGE OF DIVN DELAY - MIN	0.0
(VEH-H) MAX	0.0
AV ACCIDENTS PER DAY	0.00
AV QUEUE DELAY/DAY (VEH-H)	0.0
AV DIVN DELAY/DAY (VEH-H)	0.0
AV TOTAL DELAY/DAY (VEH-H)	0.0

AVERAGE ACCIDENT NUMBERS (PIA/DAY)	
MAIN ROUTE WITHOUT WORKS	0.0085
MAIN ROUTE WITH WORKS	0.0091
DIVERSION	0.0152

PIA: Personal Injury Accidents

IMPACTS ON ROAD USERS	
ROAD USER COSTS PER DAY (DOLLARS)	\$653
CONGESTED HOURS PER DAY*	0

*Delays Exceeding 15 Minutes

**USH 151: BUS 151 TO STH 126 (IOWA AND LAFAYETTE COUNTIES)
 CONTINUOUS (24 HOUR) CLOSURE
 DIVERSION ROUTE: STH 126 - CTH G - CTH O**

MAY
 Analyzed for 2009
 Construction Season

GRAPHICAL REPRESENTATION OF TRAFFIC MODEL INPUT AND OUTPUT
SATURDAY NORTHBOUND DIRECTION

