

**USH 151: BUS 151 TO STH 126 (IOWA AND LAFAYETTE COUNTIES)  
CONTINUOUS (24 HOUR) CLOSURE  
DIVERSION ROUTE: STH 126 - CTH G - CTH O**

**MAY**  
Analyzed for 2009  
Construction Season

**SUMMARY OF TRAFFIC MODEL OUTPUT**  
MON-THUR SOUTHBOUND DIRECTION

TIME OF DAY	FLOWS AND CAPACITY IN VEH/HR								AVERAGE SPEEDS IN MPH						
	MAIN ROUTE		ALTERNATE ROUTE		SITE CAPA CITY	FLOW MAIN ROUTE	FLOW DIVER -TING	TOTAL DIVN FLOW	AV.DEL PER VEH (MINS)	AVERAGE QUEUE (VEH)	MAIN ROUTE		SITE	ALTERNATE ROUTE	
	DEMAND FLOW	PCT HEAVY	NORMAL FLOW	PCT HEAVY							WITHOUT WORK ZN	WITH WORK ZN		WITHOUT WORK ZN	WITH WORK ZN
MID-1 AM	36	0.0	5	0.0	1500	36	0	5	0.50	0	63.8	60.8	41.9	24.8	24.8
1-2 AM	26	0.0	4	0.0	1500	26	0	4	0.50	0	63.8	60.8	41.9	24.8	24.8
2-3 AM	20	0.0	3	0.0	1500	20	0	3	0.50	0	63.8	60.8	41.9	24.8	24.8
3-4 AM	60	0.0	9	0.0	1500	60	0	9	0.50	0	63.8	60.7	41.8	24.8	24.8
4-5 AM	47	0.0	7	0.0	1500	47	0	7	0.50	0	63.8	60.7	41.9	24.8	24.8
5-6 AM	103	0.0	16	0.0	1500	103	0	16	0.51	0	63.7	60.6	41.6	24.7	24.7
6-7 AM	198	0.0	31	0.0	1500	198	0	31	0.52	0	63.5	60.4	41.3	24.6	24.6
7-8 AM	238	0.0	38	0.0	1500	238	0	38	0.52	0	63.5	60.3	41.2	24.5	24.5
8-9 AM	259	0.0	41	0.0	1500	259	0	41	0.52	0	63.4	60.3	41.1	24.5	24.5
9-10 AM	275	0.0	43	0.0	1500	275	0	43	0.52	0	63.4	60.2	41.0	24.5	24.5
10-11 AM	290	0.0	46	0.0	1500	290	0	46	0.53	0	63.3	60.2	41.0	24.5	24.5
11A-NOON	293	0.0	46	0.0	1500	293	0	46	0.53	0	63.3	60.2	41.0	24.5	24.5
NOON-1PM	279	0.0	44	0.0	1500	279	0	44	0.53	0	63.4	60.2	41.0	24.5	24.5
1-2 PM	306	0.0	48	0.0	1500	306	0	48	0.53	0	63.3	60.2	40.9	24.5	24.5
2-3 PM	311	0.0	49	0.0	1500	311	0	49	0.53	0	63.3	60.2	40.9	24.5	24.5
3-4 PM	384	0.0	61	0.0	1500	384	0	61	0.54	0	63.2	60.0	40.7	24.3	24.3
4-5 PM	401	0.0	63	0.0	1500	401	0	63	0.54	0	63.2	59.9	40.6	24.3	24.3
5-6 PM	430	0.0	68	0.0	1500	430	0	68	0.54	0	63.1	59.9	40.6	24.3	24.3
6-7 PM	283	0.0	44	0.0	1500	283	0	44	0.53	0	63.4	60.2	41.0	24.5	24.5
7-8 PM	191	0.0	30	0.0	1500	191	0	30	0.52	0	63.5	60.4	41.4	24.6	24.6
8-9 PM	158	0.0	25	0.0	1500	158	0	25	0.51	0	63.6	60.5	41.4	24.7	24.7
9-10 PM	120	0.0	19	0.0	1500	120	0	19	0.51	0	63.7	60.6	41.6	24.7	24.7
10-11 PM	85	0.0	13	0.0	1500	85	0	13	0.51	0	63.7	60.7	41.7	24.7	24.7
11PM-MID	62	0.0	9	0.0	1500	62	0	9	0.50	0	63.8	60.7	41.8	24.8	24.8

*----- SITE BREAKDOWN DELAYS -----*	
BREAKDOWN DURATION (MINS)	0
RANGE OF QUEUE DELAY - MIN (VEH-H) MAX	0.0
RANGE OF DIVN DELAY - MIN (VEH-H) MAX	0.0
AV BREAKDOWNS PER DAY	0.00
AV QUEUE DELAY/DAY (VEH-H)	0.0
AV DIVN DELAY/DAY (VEH-H)	0.0
AV TOTAL DELAY/DAY (VEH-H)	0.0

*----- SITE ACCIDENT DELAYS -----*	
ACCIDENT DURATION (MINS)	0
RANGE OF QUEUE DELAY - MIN (VEH-H) MAX	0.0
RANGE OF DIVN DELAY - MIN (VEH-H) MAX	0.0
AV ACCIDENTS PER DAY	0.00
AV QUEUE DELAY/DAY (VEH-H)	0.0
AV DIVN DELAY/DAY (VEH-H)	0.0
AV TOTAL DELAY/DAY (VEH-H)	0.0

AVERAGE ACCIDENT NUMBERS (PIA/DAY)	
MAIN ROUTE WITHOUT WORKS	0.0085
MAIN ROUTE WITH WORKS	0.0090
DIVERSION	0.0151

PIA: Personal Injury Accidents

IMPACTS ON ROAD USERS	
ROAD USER COSTS PER DAY ( DOLLARS)	\$516
CONGESTED HOURS PER DAY*	0

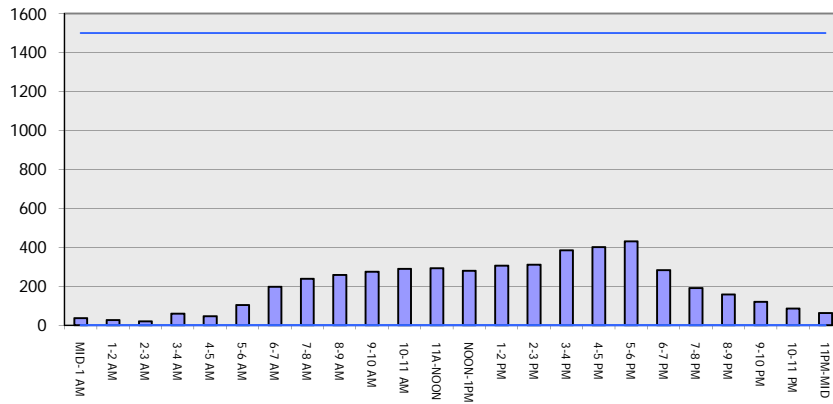
\*Delays Exceeding 15 Minutes

**USH 151: BUS 151 TO STH 126 (IOWA AND LAFAYETTE COUNTIES)**  
**CONTINUOUS (24 HOUR) CLOSURE**  
**DIVERSION ROUTE: STH 126 - CTH G - CTH O**

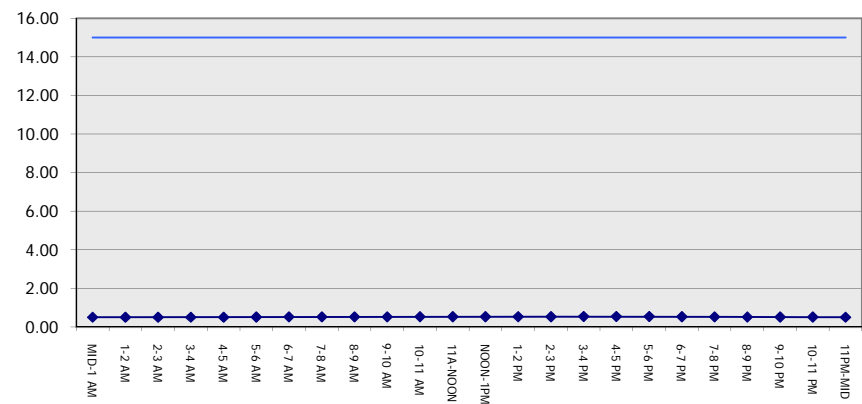
**MAY**  
 Analyzed for 2009  
 Construction Season

**GRAPHICAL REPRESENTATION OF TRAFFIC MODEL INPUT AND OUTPUT**  
**MON-THUR SOUTHBOUND DIRECTION**

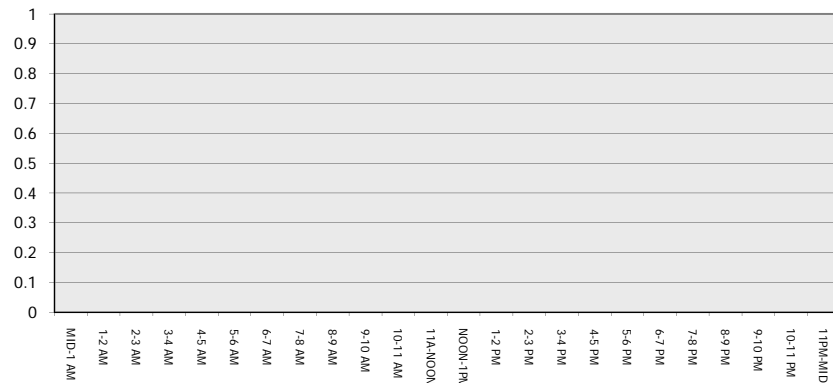
**Main Route - Traffic Demand (Vehicles Per Hour)**



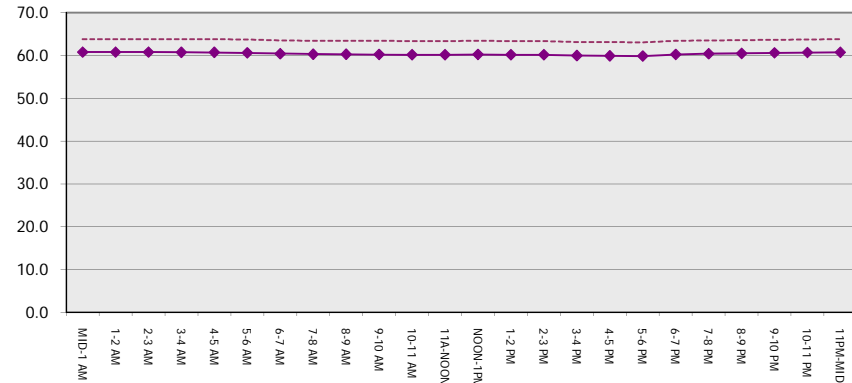
**Main Route Average Delay Per Vehicle (Minutes)**



**Main Route - Average Queue Length (Vehicles)**



**Main Route - Average Speed (MPH)**



<b>USH 151: BUS 151 TO STH 126 (IOWA AND LAFAYETTE COUNTIES)</b> <b>CONTINUOUS (24 HOUR) CLOSURE</b> <b>DIVERSION ROUTE: STH 126 - CTH G - CTH O</b>	<b>MAY</b>
	Analyzed for 2009 Construction Season

**SUMMARY OF TRAFFIC MODEL OUTPUT**

MON-THUR                      NORTHBOUND DIRECTION

TIME OF DAY	FLOWS AND CAPACITY IN VEH/HR								AVERAGE SPEEDS IN MPH						
	MAIN		DIVERSION		SITE CAPA CITY	FLOW MAIN ROUTE	FLOW DIVER -TING	TOTAL DIVN FLOW	AV.DEL PER VEH (MINS)	AVERAGE QUEUE (VEH)	MAIN ROUTE		SITE	ALTERNATE ROUTE	
	DEMAND FLOW	PCT HEAVY	NORMAL FLOW	PCT HEAVY							WITHOUT WORK ZN	WITH WORK ZN		WITHOUT WORK ZN	WITH WORK ZN
MID-1 AM	48	0.0	7	0.0	1500	48	0	7	0.50	0	63.8	60.7	41.9	24.8	24.8
1-2 AM	36	0.0	5	0.0	1500	36	0	5	0.50	0	63.8	60.8	41.9	24.8	24.8
2-3 AM	40	0.0	6	0.0	1500	40	0	6	0.50	0	63.8	60.7	41.9	24.8	24.8
3-4 AM	56	0.0	8	0.0	1500	56	0	8	0.50	0	63.8	60.7	41.8	24.8	24.8
4-5 AM	89	0.0	14	0.0	1500	89	0	14	0.51	0	63.7	60.7	41.7	24.7	24.7
5-6 AM	163	0.0	26	0.0	1500	163	0	26	0.51	0	63.6	60.5	41.4	24.7	24.7
6-7 AM	268	0.0	42	0.0	1500	268	0	42	0.52	0	63.4	60.2	41.0	24.5	24.5
7-8 AM	328	0.0	51	0.0	1500	328	0	51	0.53	0	63.3	60.1	40.9	24.5	24.5
8-9 AM	258	0.0	40	0.0	1500	258	0	40	0.52	0	63.4	60.3	41.1	24.5	24.5
9-10 AM	239	0.0	38	0.0	1500	239	0	38	0.52	0	63.5	60.3	41.2	24.5	24.5
10-11 AM	261	0.0	41	0.0	1500	261	0	41	0.52	0	63.4	60.2	41.1	24.5	24.5
11A-NOON	279	0.0	44	0.0	1500	279	0	44	0.53	0	63.4	60.2	41.0	24.5	24.5
NOON-1PM	279	0.0	44	0.0	1500	279	0	44	0.53	0	63.4	60.2	41.0	24.5	24.5
1-2 PM	312	0.0	49	0.0	1500	312	0	49	0.53	0	63.3	60.2	40.9	24.5	24.5
2-3 PM	340	0.0	54	0.0	1500	340	0	54	0.53	0	63.3	60.1	40.8	24.4	24.4
3-4 PM	376	0.0	60	0.0	1500	376	0	60	0.53	0	63.2	60.0	40.7	24.4	24.4
4-5 PM	409	0.0	65	0.0	1500	409	0	65	0.54	0	63.2	59.9	40.6	24.3	24.3
5-6 PM	327	0.0	51	0.0	1500	327	0	51	0.53	0	63.3	60.1	40.9	24.5	24.5
6-7 PM	242	0.0	38	0.0	1500	242	0	38	0.52	0	63.5	60.3	41.2	24.5	24.5
7-8 PM	198	0.0	31	0.0	1500	198	0	31	0.52	0	63.5	60.4	41.3	24.6	24.6
8-9 PM	200	0.0	32	0.0	1500	200	0	32	0.52	0	63.5	60.4	41.3	24.6	24.6
9-10 PM	162	0.0	26	0.0	1500	162	0	26	0.51	0	63.6	60.5	41.4	24.7	24.7
10-11 PM	102	0.0	16	0.0	1500	102	0	16	0.51	0	63.7	60.6	41.7	24.7	24.7
11PM-MID	70	0.0	11	0.0	1500	70	0	11	0.51	0	63.8	60.7	41.7	24.8	24.8

*----- SITE BREAKDOWN DELAYS -----*	
BREAKDOWN DURATION (MINS)	0
RANGE OF QUEUE DELAY - MIN	0.0
(VEH-H) MAX	0.0
RANGE OF DIVN DELAY - MIN	0.0
(VEH-H) MAX	0.0
AV BREAKDOWNS PER DAY	0.00
AV QUEUE DELAY/DAY (VEH-H)	0.0
AV DIVN DELAY/DAY (VEH-H)	0.0
AV TOTAL DELAY/DAY (VEH-H)	0.0

*----- SITE ACCIDENT DELAYS -----*	
ACCIDENT DURATION (MINS)	0
RANGE OF QUEUE DELAY - MIN	0.0
(VEH-H) MAX	0.0
RANGE OF DIVN DELAY - MIN	0.0
(VEH-H) MAX	0.0
AV ACCIDENTS PER DAY	0.00
AV QUEUE DELAY/DAY (VEH-H)	0.0
AV DIVN DELAY/DAY (VEH-H)	0.0
AV TOTAL DELAY/DAY (VEH-H)	0.0

AVERAGE ACCIDENT NUMBERS (PIA/DAY)	
MAIN ROUTE WITHOUT WORKS	0.0089
MAIN ROUTE WITH WORKS	0.0094
DIVERSION	0.0158

PIA: Personal Injury Accidents

IMPACTS ON ROAD USERS	
ROAD USER COSTS PER DAY ( DOLLARS)	\$537
CONGESTED HOURS PER DAY*	0

\*Delays Exceeding 15 Minutes

**USH 151: BUS 151 TO STH 126 (IOWA AND LAFAYETTE COUNTIES)  
 CONTINUOUS (24 HOUR) CLOSURE  
 DIVERSION ROUTE: STH 126 - CTH G - CTH O**

**MAY**  
 Analyzed for 2009  
 Construction Season

**GRAPHICAL REPRESENTATION OF TRAFFIC MODEL INPUT AND OUTPUT**  
**MON-THUR NORTHBOUND DIRECTION**

