

**USH 41: USH 151 TO STH 67 (DODGE AND FOND DU LAC COUNTIES)
CONTINUOUS (24 HOUR) CLOSURE
DIVERSION ROUTE: CTH KK - STH 175 - CTH B**

MAY
Analyzed for 2009
Construction Season

SUMMARY OF TRAFFIC MODEL OUTPUT
SATURDAY SOUTHBOUND DIRECTION

TIME OF DAY	FLOWS AND CAPACITY IN VEH/HR						AVERAGE SPEEDS IN MPH								
	MAIN ROUTE		ALTERNATE ROUTE		SITE CAPA CITY	FLOW MAIN ROUTE	FLOW DIVER -TING	TOTAL DIVN FLOW	AV.DEL PER VEH (MINS)	AVERAGE QUEUE (VEH)	MAIN ROUTE		ALTERNATE ROUTE		
	DEMAND FLOW	PCT HEAVY	NORMAL FLOW	PCT HEAVY							WITHOUT WORK ZN	WITH WORK ZN	SITE	WITHOUT WORK ZN	WITH WORK ZN
MID-1 AM	128	0.0	19	0.0	1500	128	0	19	0.43	0	66.1	60.5	45.0	29.6	29.6
1-2 AM	83	0.0	13	0.0	1500	83	0	13	0.43	0	66.2	60.6	45.1	29.7	29.7
2-3 AM	70	0.0	11	0.0	1500	70	0	11	0.43	0	66.3	60.6	45.2	29.7	29.7
3-4 AM	88	0.0	13	0.0	1500	88	0	13	0.43	0	66.2	60.5	45.1	29.7	29.7
4-5 AM	132	0.0	21	0.0	1500	132	0	21	0.44	0	66.1	60.4	45.0	29.6	29.6
5-6 AM	254	0.0	39	0.0	1500	254	0	39	0.45	0	65.9	60.1	44.5	29.4	29.4
6-7 AM	403	0.0	62	0.0	1500	403	0	62	0.46	0	65.6	59.7	43.9	29.2	29.2
7-8 AM	530	0.0	81	0.0	1500	530	0	81	0.47	0	65.4	59.4	43.4	29.1	29.1
8-9 AM	774	0.0	119	0.0	1500	774	0	119	0.50	0	65.0	58.7	42.5	28.7	28.7
9-10 AM	948	0.0	145	0.0	1500	948	0	145	0.51	0	64.6	58.3	41.9	28.4	28.4
10-11 AM	1086	0.0	167	0.0	1500	1086	0	167	0.53	0	64.3	57.9	41.4	28.3	28.3
11A-NOON	1131	0.0	173	0.0	1500	1131	0	173	0.55	0	64.3	57.6	40.8	28.2	28.2
NOON-1PM	1221	0.0	187	0.0	1500	1221	0	187	0.66	0	64.1	56.3	37.8	28.0	28.0
1-2 PM	1230	0.0	188	0.0	1500	1230	0	188	0.68	0	64.1	56.1	37.5	28.0	28.0
2-3 PM	1246	0.0	190	0.0	1500	1246	0	190	0.70	0	64.1	55.9	37.1	28.0	28.0
3-4 PM	1218	0.0	186	0.0	1500	1218	0	186	0.66	0	64.1	56.3	37.9	28.1	28.1
4-5 PM	1157	0.0	177	0.0	1500	1157	0	177	0.58	0	64.2	57.3	39.9	28.1	28.1
5-6 PM	1000	0.0	152	0.0	1500	1000	0	152	0.52	0	64.5	58.1	41.7	28.4	28.4
6-7 PM	844	0.0	129	0.0	1500	844	0	129	0.50	0	64.8	58.6	42.2	28.6	28.6
7-8 PM	683	0.0	105	0.0	1500	683	0	105	0.49	0	65.1	59.0	42.8	28.8	28.8
8-9 PM	639	0.0	97	0.0	1500	639	0	97	0.48	0	65.2	59.1	43.0	28.9	28.9
9-10 PM	534	0.0	82	0.0	1500	534	0	82	0.47	0	65.4	59.4	43.3	29.0	29.0
10-11 PM	368	0.0	56	0.0	1500	368	0	56	0.46	0	65.7	59.8	44.0	29.2	29.2
11PM-MID	207	0.0	31	0.0	1500	207	0	31	0.44	0	66.0	60.2	44.6	29.5	29.5

----- SITE BREAKDOWN DELAYS -----	
BREAKDOWN DURATION (MINS)	0
RANGE OF QUEUE DELAY - MIN (VEH-H) MAX	0.0
RANGE OF DIVN DELAY - MIN (VEH-H) MAX	0.0
AV BREAKDOWNS PER DAY	0.00
AV QUEUE DELAY/DAY (VEH-H)	0.0
AV DIVN DELAY/DAY (VEH-H)	0.0
AV TOTAL DELAY/DAY (VEH-H)	0.0

----- SITE ACCIDENT DELAYS -----	
ACCIDENT DURATION (MINS)	0
RANGE OF QUEUE DELAY - MIN (VEH-H) MAX	0.0
RANGE OF DIVN DELAY - MIN (VEH-H) MAX	0.0
AV ACCIDENTS PER DAY	0.00
AV QUEUE DELAY/DAY (VEH-H)	0.0
AV DIVN DELAY/DAY (VEH-H)	0.0
AV TOTAL DELAY/DAY (VEH-H)	0.0

AVERAGE ACCIDENT NUMBERS (PIA/DAY)	
MAIN ROUTE WITHOUT WORKS	0.0130
MAIN ROUTE WITH WORKS	0.0119
DIVERSION	0.0178

PIA: Personal Injury Accidents

IMPACTS ON ROAD USERS	
ROAD USER COSTS PER DAY (DOLLARS)	\$2,411
CONGESTED HOURS PER DAY*	0

*Delays Exceeding 15 Minutes

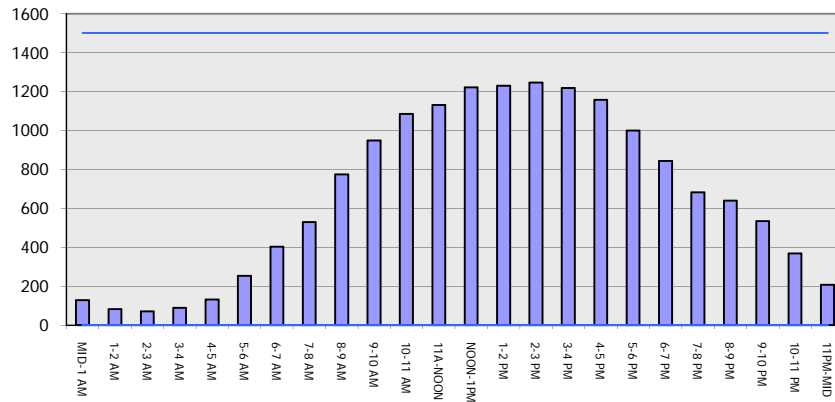
USH 41: USH 151 TO STH 67 (DODGE AND FOND DU LAC COUNTIES)
CONTINUOUS (24 HOUR) CLOSURE
DIVERSION ROUTE: CTH KK - STH 175 - CTH B

MAY
 Analyzed for 2009
 Construction Season

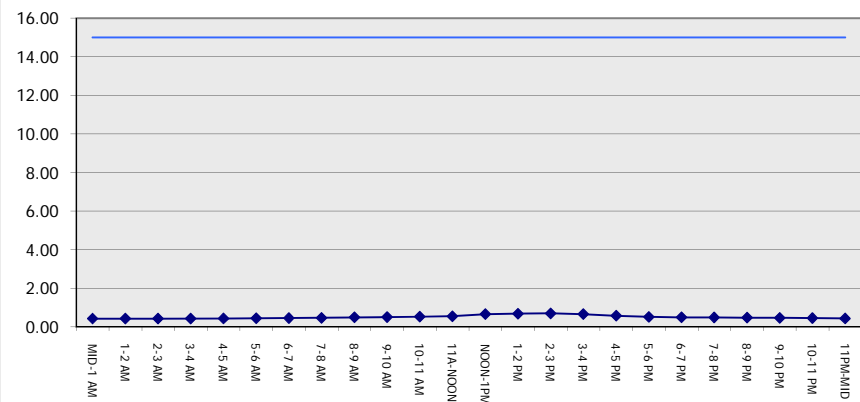
GRAPHICAL REPRESENTATION OF TRAFFIC MODEL INPUT AND OUTPUT

SATURDAY SOUTHBOUND DIRECTION

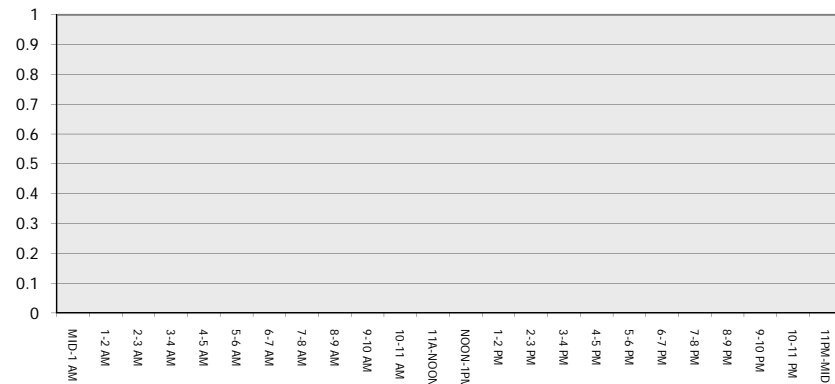
Main Route - Traffic Demand (Vehicles Per Hour)



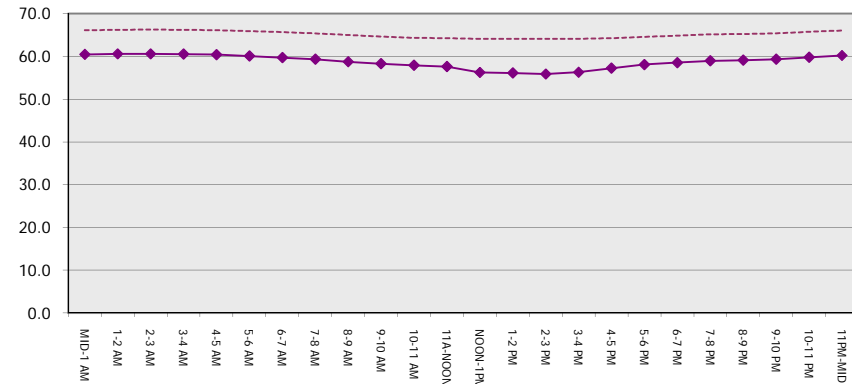
Main Route Average Delay Per Vehicle (Minutes)



Main Route - Average Queue Length (Vehicles)



Main Route - Average Speed (MPH)



USH 41: USH 151 TO STH 67 (DODGE AND FOND DU LAC COUNTIES) CONTINUOUS (24 HOUR) CLOSURE DIVERSION ROUTE: CTH KK - STH 175 - CTH B	MAY
	Analyzed for 2009 Construction Season

SUMMARY OF TRAFFIC MODEL OUTPUT

SATURDAY NORTHBOUND DIRECTION

TIME OF DAY	FLOWS AND CAPACITY IN VEH/HR								AVERAGE SPEEDS IN MPH						
	MAIN		DIVERSION		SITE CAPA CITY	FLOW MAIN ROUTE	FLOW DIVER -TING	TOTAL DIVN FLOW	AV.DEL PER VEH (MINS)	AVERAGE QUEUE (VEH)	MAIN ROUTE		SITE	ALTERNATE ROUTE	
	DEMAND FLOW	PCT HEAVY	NORMAL FLOW	PCT HEAVY							WITHOUT WORK ZN	WITH WORK ZN		WITHOUT WORK ZN	WITH WORK ZN
MID-1 AM	235	0.0	36	0.0	1500	235	0	36	0.45	0	66.0	60.2	44.5	29.5	29.5
1-2 AM	140	0.0	22	0.0	1500	140	0	22	0.44	0	66.1	60.4	44.9	29.6	29.6
2-3 AM	97	0.0	15	0.0	1500	97	0	15	0.43	0	66.2	60.5	45.1	29.7	29.7
3-4 AM	111	0.0	17	0.0	1500	111	0	17	0.43	0	66.2	60.5	45.0	29.6	29.6
4-5 AM	202	0.0	30	0.0	1500	202	0	30	0.44	0	66.0	60.2	44.6	29.5	29.5
5-6 AM	346	0.0	53	0.0	1500	346	0	53	0.46	0	65.8	59.9	44.1	29.3	29.3
6-7 AM	715	0.0	109	0.0	1500	715	0	109	0.49	0	65.1	58.9	42.7	28.8	28.8
7-8 AM	1114	0.0	171	0.0	1500	1114	0	171	0.53	0	64.3	57.9	41.3	28.2	28.2
8-9 AM	1405	0.0	215	0.0	1499	1405	0	215	0.90	0	63.8	53.7	32.9	27.8	27.8
9-10 AM	1528	0.0	234	0.0	1499	1528	0	234	1.30	7	63.5	50.0	30.8	27.6	27.6
10-11 AM	1596	0.0	244	0.0	1500	1596	0	244	3.68	74	63.4	36.0	30.8	27.5	27.5
11A-NOON	1558	0.0	238	0.0	1499	1558	0	238	6.89	159	63.5	26.1	30.8	27.6	27.6
NOON-1PM	1372	0.0	210	0.0	1499	1372	0	210	5.51	125	63.8	29.7	31.2	27.8	27.8
1-2 PM	1268	0.0	194	0.0	1500	1268	0	194	0.95	6	64.0	53.3	36.1	27.9	27.9
2-3 PM	1170	0.0	179	0.0	1500	1170	0	179	0.60	0	64.2	57.1	39.4	28.1	28.1
3-4 PM	1134	0.0	173	0.0	1500	1134	0	173	0.55	0	64.3	57.6	40.7	28.2	28.2
4-5 PM	1048	0.0	160	0.0	1500	1048	0	160	0.52	0	64.5	58.0	41.5	28.3	28.3
5-6 PM	957	0.0	146	0.0	1500	957	0	146	0.51	0	64.6	58.2	41.9	28.4	28.4
6-7 PM	854	0.0	131	0.0	1500	854	0	131	0.51	0	64.8	58.6	42.2	28.6	28.6
7-8 PM	684	0.0	105	0.0	1500	684	0	105	0.49	0	65.1	59.0	42.8	28.8	28.8
8-9 PM	622	0.0	95	0.0	1500	622	0	95	0.48	0	65.2	59.1	43.0	28.9	28.9
9-10 PM	551	0.0	84	0.0	1500	551	0	84	0.48	0	65.3	59.3	43.3	29.0	29.0
10-11 PM	395	0.0	61	0.0	1500	395	0	61	0.46	0	65.6	59.7	43.9	29.2	29.2
11PM-MID	218	0.0	34	0.0	1500	218	0	34	0.44	0	66.0	60.2	44.6	29.5	29.5

----- SITE BREAKDOWN DELAYS -----	
BREAKDOWN DURATION (MINS)	0
RANGE OF QUEUE DELAY - MIN	0.0
(VEH-H) MAX	0.0
RANGE OF DIVN DELAY - MIN	0.0
(VEH-H) MAX	0.0
AV BREAKDOWNS PER DAY	0.00
AV QUEUE DELAY/DAY (VEH-H)	0.0
AV DIVN DELAY/DAY (VEH-H)	0.0
AV TOTAL DELAY/DAY (VEH-H)	0.0

----- SITE ACCIDENT DELAYS -----	
ACCIDENT DURATION (MINS)	0
RANGE OF QUEUE DELAY - MIN	0.0
(VEH-H) MAX	0.0
RANGE OF DIVN DELAY - MIN	0.0
(VEH-H) MAX	0.0
AV ACCIDENTS PER DAY	0.00
AV QUEUE DELAY/DAY (VEH-H)	0.0
AV DIVN DELAY/DAY (VEH-H)	0.0
AV TOTAL DELAY/DAY (VEH-H)	0.0

AVERAGE ACCIDENT NUMBERS (PIA/DAY)	
MAIN ROUTE WITHOUT WORKS	0.0157
MAIN ROUTE WITH WORKS	0.0144
DIVERSION	0.0215

PIA: Personal Injury Accidents

IMPACTS ON ROAD USERS	
ROAD USER COSTS PER DAY (DOLLARS)	\$9,202
CONGESTED HOURS PER DAY*	0

*Delays Exceeding 15 Minutes

USH 41: USH 151 TO STH 67 (DODGE AND FOND DU LAC COUNTIES)
CONTINUOUS (24 HOUR) CLOSURE
DIVERSION ROUTE: CTH KK - STH 175 - CTH B

MAY
 Analyzed for 2009
 Construction Season

GRAPHICAL REPRESENTATION OF TRAFFIC MODEL INPUT AND OUTPUT
SATURDAY NORTHBOUND DIRECTION

