

USH 151: CTH G TO CTH S (DODGE COUNTY) CONTINUOUS (24 HOUR) CLOSURE DIVERSION ROUTE: CTH G - CTH S	OCTOBER
	Analyzed for 2009 Construction Season

SUMMARY OF TRAFFIC MODEL OUTPUT

FRIDAY SOUTHBOUND DIRECTION

TIME OF DAY	FLOWS AND CAPACITY IN VEH/HR								AVERAGE SPEEDS IN MPH						
	MAIN ROUTE		ALTERNATE ROUTE		SITE CAPA CITY	FLOW MAIN ROUTE	FLOW DIVER -TING	TOTAL DIVN FLOW	AV.DEL PER VEH (MINS)	AVERAGE QUEUE (VEH)	MAIN ROUTE		ALTERNATE ROUTE		
	DEMAND FLOW	PCT HEAVY	NORMAL FLOW	PCT HEAVY							WITHOUT WORK ZN	WITH WORK ZN	SITE	WITHOUT WORK ZN	WITH WORK ZN
MID-1 AM	36	0.0	2	0.0	1500	36	0	2	0.50	0	63.8	59.5	41.9	24.8	24.8
1-2 AM	34	0.0	2	0.0	1500	34	0	2	0.50	0	63.8	59.5	41.9	24.8	24.8
2-3 AM	45	0.0	3	0.0	1500	45	0	3	0.50	0	63.8	59.4	41.9	24.8	24.8
3-4 AM	72	0.0	4	0.0	1500	72	0	4	0.51	0	63.8	59.4	41.7	24.8	24.8
4-5 AM	156	0.0	11	0.0	1500	156	0	11	0.51	0	63.6	59.2	41.4	24.8	24.8
5-6 AM	376	0.0	25	0.0	1500	376	0	25	0.53	0	63.2	58.7	40.7	24.7	24.7
6-7 AM	579	0.0	38	0.0	1500	579	0	38	0.55	0	62.8	58.2	40.1	24.5	24.5
7-8 AM	695	0.0	45	0.0	1500	695	0	45	0.56	0	62.6	57.9	39.7	24.5	24.5
8-9 AM	560	0.0	37	0.0	1500	560	0	37	0.55	0	62.8	58.2	40.1	24.5	24.5
9-10 AM	547	0.0	36	0.0	1500	547	0	36	0.55	0	62.9	58.2	40.1	24.6	24.6
10-11 AM	577	0.0	38	0.0	1500	577	0	38	0.55	0	62.8	58.2	40.1	24.5	24.5
11A-NOON	580	0.0	38	0.0	1500	580	0	38	0.55	0	62.8	58.2	40.1	24.5	24.5
NOON-1PM	652	0.0	43	0.0	1500	652	0	43	0.56	0	62.7	58.0	39.8	24.5	24.5
1-2 PM	729	0.0	47	0.0	1500	729	0	47	0.57	0	62.5	57.9	39.6	24.5	24.5
2-3 PM	797	0.0	53	0.0	1500	797	0	53	0.57	0	62.4	57.7	39.4	24.4	24.4
3-4 PM	890	0.0	58	0.0	1500	890	0	58	0.58	0	62.2	57.5	39.1	24.4	24.4
4-5 PM	941	0.0	62	0.0	1500	941	0	62	0.59	0	62.2	57.4	38.9	24.3	24.3
5-6 PM	864	0.0	57	0.0	1500	864	0	57	0.58	0	62.3	57.6	39.1	24.4	24.4
6-7 PM	626	0.0	41	0.0	1500	626	0	41	0.56	0	62.7	58.1	39.9	24.5	24.5
7-8 PM	453	0.0	30	0.0	1500	453	0	30	0.54	0	63.0	58.5	40.4	24.6	24.6
8-9 PM	326	0.0	22	0.0	1500	326	0	22	0.53	0	63.3	58.8	40.9	24.7	24.7
9-10 PM	222	0.0	15	0.0	1500	222	0	15	0.52	0	63.5	59.1	41.2	24.7	24.7
10-11 PM	151	0.0	10	0.0	1500	151	0	10	0.51	0	63.6	59.2	41.5	24.8	24.8
11PM-MID	90	0.0	5	0.0	1500	90	0	5	0.51	0	63.7	59.4	41.7	24.8	24.8

----- SITE BREAKDOWN DELAYS -----	
BREAKDOWN DURATION (MINS)	0
RANGE OF QUEUE DELAY - MIN (VEH-H) MAX	0.0
RANGE OF DIVN DELAY - MIN (VEH-H) MAX	0.0
AV BREAKDOWNS PER DAY	0.00
AV QUEUE DELAY/DAY (VEH-H)	0.0
AV DIVN DELAY/DAY (VEH-H)	0.0
AV TOTAL DELAY/DAY (VEH-H)	0.0

----- SITE ACCIDENT DELAYS -----	
ACCIDENT DURATION (MINS)	0
RANGE OF QUEUE DELAY - MIN (VEH-H) MAX	0.0
RANGE OF DIVN DELAY - MIN (VEH-H) MAX	0.0
AV ACCIDENTS PER DAY	0.00
AV QUEUE DELAY/DAY (VEH-H)	0.0
AV DIVN DELAY/DAY (VEH-H)	0.0
AV TOTAL DELAY/DAY (VEH-H)	0.0

AVERAGE ACCIDENT NUMBERS (PIA/DAY)	
MAIN ROUTE WITHOUT WORKS	0.0132
MAIN ROUTE WITH WORKS	0.0144
DIVERSION	0.0071

PIA: Personal Injury Accidents

IMPACTS ON ROAD USERS	
ROAD USER COSTS PER DAY (DOLLARS)	\$1,283
CONGESTED HOURS PER DAY*	0

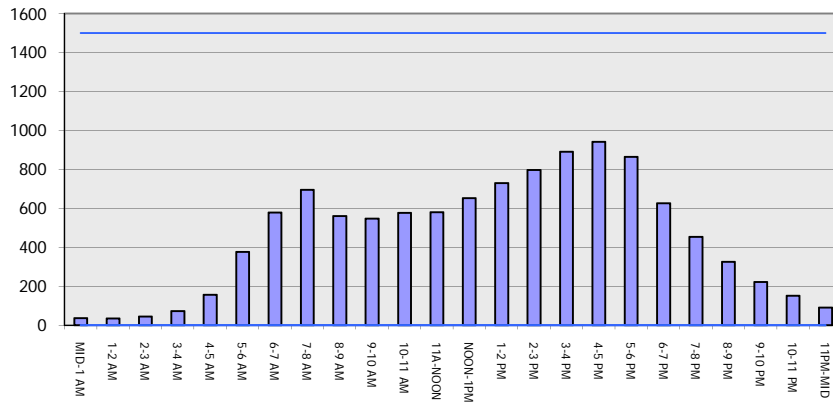
*Delays Exceeding 15 Minutes

USH 151: CTH G TO CTH S (DODGE COUNTY)
CONTINUOUS (24 HOUR) CLOSURE
DIVERSION ROUTE: CTH G - CTH S

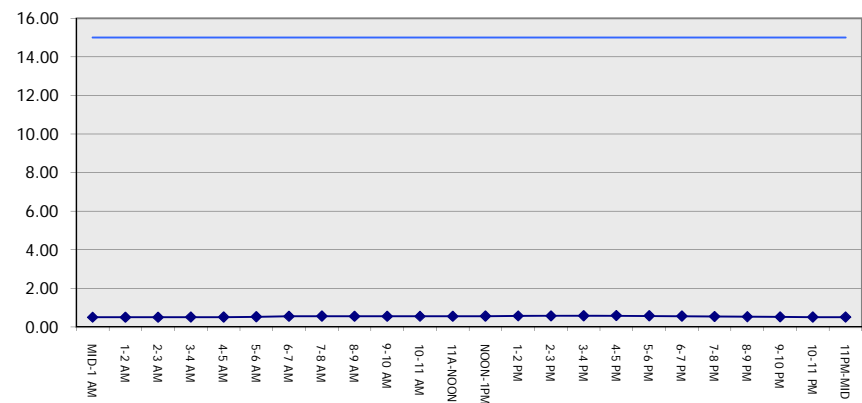
OCTOBER
 Analyzed for 2009
 Construction Season

GRAPHICAL REPRESENTATION OF TRAFFIC MODEL INPUT AND OUTPUT
FRIDAY SOUTHBOUND DIRECTION

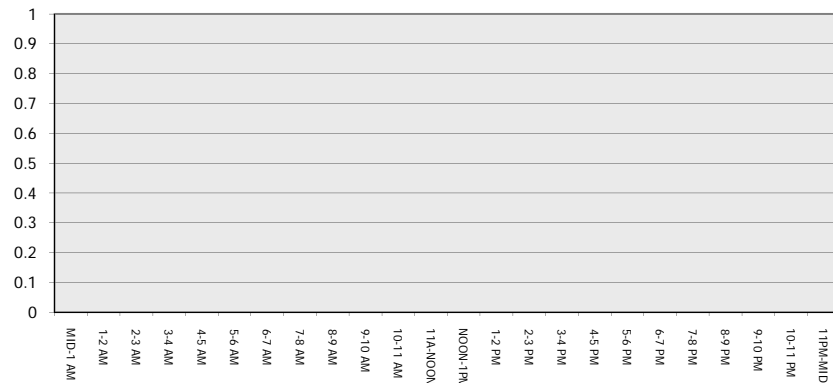
Main Route - Traffic Demand (Vehicles Per Hour)



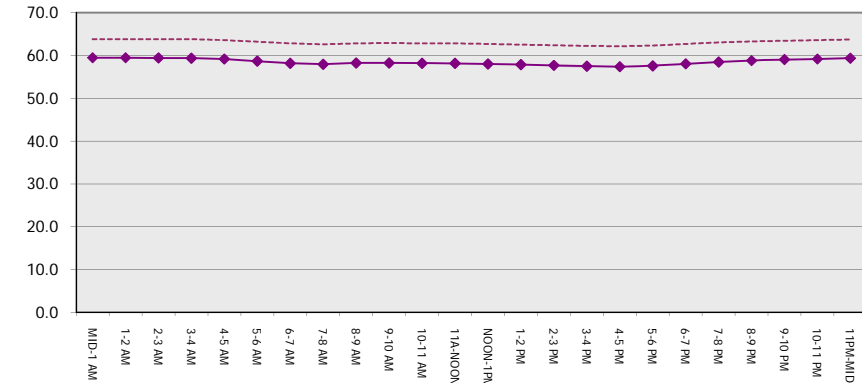
Main Route Average Delay Per Vehicle (Minutes)



Main Route - Average Queue Length (Vehicles)



Main Route - Average Speed (MPH)



USH 151: CTH G TO CTH S (DODGE COUNTY) CONTINUOUS (24 HOUR) CLOSURE DIVERSION ROUTE: CTH G - CTH S	OCTOBER
	Analyzed for 2009 Construction Season

SUMMARY OF TRAFFIC MODEL OUTPUT

FRIDAY NORTHBOUND DIRECTION

TIME OF DAY	FLOWS AND CAPACITY IN VEH/HR								AVERAGE SPEEDS IN MPH						
	MAIN		DIVERSION		SITE CAPA CITY	FLOW MAIN ROUTE	FLOW DIVER -TING	TOTAL DIVN FLOW	AV.DEL PER VEH (MINS)	AVERAGE QUEUE (VEH)	MAIN ROUTE		SITE	ALTERNATE ROUTE	
	DEMAND FLOW	PCT HEAVY	NORMAL FLOW	PCT HEAVY							WITHOUT WORK ZN	WITH WORK ZN		WITHOUT WORK ZN	WITH WORK ZN
MID-1 AM	65	0.0	4	0.0	1500	65	0	4	0.50	0	63.8	59.4	41.8	24.8	24.8
1-2 AM	51	0.0	3	0.0	1500	51	0	3	0.50	0	63.8	59.4	41.8	24.8	24.8
2-3 AM	48	0.0	3	0.0	1500	48	0	3	0.50	0	63.8	59.4	41.9	24.8	24.8
3-4 AM	56	0.0	3	0.0	1500	56	0	3	0.50	0	63.8	59.4	41.8	24.8	24.8
4-5 AM	95	0.0	6	0.0	1500	95	0	6	0.51	0	63.7	59.4	41.7	24.8	24.8
5-6 AM	205	0.0	13	0.0	1500	205	0	13	0.52	0	63.5	59.1	41.3	24.7	24.7
6-7 AM	324	0.0	22	0.0	1500	324	0	22	0.53	0	63.3	58.8	40.9	24.7	24.7
7-8 AM	491	0.0	32	0.0	1500	491	0	32	0.55	0	63.0	58.4	40.3	24.6	24.6
8-9 AM	504	0.0	33	0.0	1500	504	0	33	0.55	0	63.0	58.4	40.3	24.6	24.6
9-10 AM	524	0.0	35	0.0	1500	524	0	35	0.55	0	62.9	58.3	40.2	24.6	24.6
10-11 AM	562	0.0	37	0.0	1500	562	0	37	0.55	0	62.8	58.2	40.1	24.5	24.5
11A-NOON	572	0.0	38	0.0	1500	572	0	38	0.55	0	62.8	58.2	40.1	24.5	24.5
NOON-1PM	668	0.0	44	0.0	1500	668	0	44	0.56	0	62.7	58.0	39.7	24.5	24.5
1-2 PM	806	0.0	53	0.0	1500	806	0	53	0.57	0	62.4	57.7	39.3	24.4	24.4
2-3 PM	923	0.0	60	0.0	1500	923	0	60	0.59	0	62.2	57.4	38.9	24.4	24.4
3-4 PM	1015	0.0	67	0.0	1500	1015	0	67	0.59	0	62.0	57.2	38.7	24.3	24.3
4-5 PM	1126	0.0	74	0.0	1500	1126	0	74	0.61	0	61.8	56.9	38.1	24.3	24.3
5-6 PM	985	0.0	65	0.0	1500	985	0	65	0.59	0	62.0	57.3	38.8	24.3	24.3
6-7 PM	692	0.0	45	0.0	1500	692	0	45	0.56	0	62.6	57.9	39.7	24.5	24.5
7-8 PM	429	0.0	28	0.0	1500	429	0	28	0.54	0	63.1	58.6	40.6	24.7	24.7
8-9 PM	323	0.0	22	0.0	1500	323	0	22	0.53	0	63.3	58.8	40.9	24.7	24.7
9-10 PM	270	0.0	17	0.0	1500	270	0	17	0.52	0	63.4	58.9	41.0	24.7	24.7
10-11 PM	196	0.0	13	0.0	1500	196	0	13	0.52	0	63.5	59.1	41.3	24.7	24.7
11PM-MID	126	0.0	9	0.0	1500	126	0	9	0.51	0	63.7	59.2	41.5	24.8	24.8

----- SITE BREAKDOWN DELAYS -----	
BREAKDOWN DURATION (MINS)	0
RANGE OF QUEUE DELAY - MIN	0.0
(VEH-H) MAX	0.0
RANGE OF DIVN DELAY - MIN	0.0
(VEH-H) MAX	0.0
AV BREAKDOWNS PER DAY	0.00
AV QUEUE DELAY/DAY (VEH-H)	0.0
AV DIVN DELAY/DAY (VEH-H)	0.0
AV TOTAL DELAY/DAY (VEH-H)	0.0

----- SITE ACCIDENT DELAYS -----	
ACCIDENT DURATION (MINS)	0
RANGE OF QUEUE DELAY - MIN	0.0
(VEH-H) MAX	0.0
RANGE OF DIVN DELAY - MIN	0.0
(VEH-H) MAX	0.0
AV ACCIDENTS PER DAY	0.00
AV QUEUE DELAY/DAY (VEH-H)	0.0
AV DIVN DELAY/DAY (VEH-H)	0.0
AV TOTAL DELAY/DAY (VEH-H)	0.0

AVERAGE ACCIDENT NUMBERS (PIA/DAY)	
MAIN ROUTE WITHOUT WORKS	0.0133
MAIN ROUTE WITH WORKS	0.0145
DIVERSION	0.0072

PIA: Personal Injury Accidents

IMPACTS ON ROAD USERS	
ROAD USER COSTS PER DAY (DOLLARS)	\$1,304
CONGESTED HOURS PER DAY*	0

*Delays Exceeding 15 Minutes

**USH 151: CTH G TO CTH S (DODGE COUNTY)
 CONTINUOUS (24 HOUR) CLOSURE
 DIVERSION ROUTE: CTH G - CTH S**

OCTOBER
 Analyzed for 2009
 Construction Season

GRAPHICAL REPRESENTATION OF TRAFFIC MODEL INPUT AND OUTPUT
FRIDAY NORTHBOUND DIRECTION

