

USH 151: CTH G TO CTH S (DODGE COUNTY) CONTINUOUS (24 HOUR) CLOSURE DIVERSION ROUTE: CTH G - CTH S	AUGUST
	Analyzed for 2009 Construction Season

SUMMARY OF TRAFFIC MODEL OUTPUT

SATURDAY SOUTHBOUND DIRECTION

TIME OF DAY	FLOWS AND CAPACITY IN VEH/HR							AVERAGE SPEEDS IN MPH							
	MAIN ROUTE		ALTERNATE ROUTE		SITE CAPA CITY	FLOW MAIN ROUTE	FLOW DIVER -TING	TOTAL DIVN FLOW	AV.DEL PER VEH (MINS)	AVERAGE QUEUE (VEH)	MAIN ROUTE		ALTERNATE ROUTE		
	DEMAND FLOW	PCT HEAVY	NORMAL FLOW	PCT HEAVY							WITHOUT WORK ZN	WITH WORK ZN	SITE	WITHOUT WORK ZN	WITH WORK ZN
MID-1 AM	64	0.0	4	0.0	1500	64	0	4	0.50	0	63.8	59.4	41.8	24.8	24.8
1-2 AM	37	0.0	2	0.0	1500	37	0	2	0.50	0	63.8	59.5	41.9	24.8	24.8
2-3 AM	45	0.0	3	0.0	1500	45	0	3	0.50	0	63.8	59.4	41.9	24.8	24.8
3-4 AM	53	0.0	3	0.0	1500	53	0	3	0.50	0	63.8	59.4	41.8	24.8	24.8
4-5 AM	103	0.0	6	0.0	1500	103	0	6	0.51	0	63.7	59.3	41.6	24.8	24.8
5-6 AM	162	0.0	11	0.0	1500	162	0	11	0.51	0	63.6	59.2	41.4	24.8	24.8
6-7 AM	285	0.0	18	0.0	1500	285	0	18	0.53	0	63.3	58.9	41.0	24.7	24.7
7-8 AM	577	0.0	38	0.0	1500	577	0	38	0.55	0	62.8	58.2	40.1	24.5	24.5
8-9 AM	745	0.0	49	0.0	1500	745	0	49	0.57	0	62.5	57.8	39.5	24.5	24.5
9-10 AM	720	0.0	48	0.0	1500	720	0	48	0.57	0	62.5	57.9	39.6	24.5	24.5
10-11 AM	790	0.0	52	0.0	1500	790	0	52	0.57	0	62.4	57.7	39.4	24.5	24.5
11A-NOON	730	0.0	48	0.0	1500	730	0	48	0.57	0	62.5	57.9	39.6	24.5	24.5
NOON-1PM	696	0.0	45	0.0	1500	696	0	45	0.56	0	62.6	57.9	39.7	24.5	24.5
1-2 PM	678	0.0	44	0.0	1500	678	0	44	0.56	0	62.7	57.9	39.7	24.5	24.5
2-3 PM	604	0.0	40	0.0	1500	604	0	40	0.56	0	62.8	58.1	39.9	24.5	24.5
3-4 PM	577	0.0	38	0.0	1500	577	0	38	0.55	0	62.8	58.2	40.1	24.5	24.5
4-5 PM	541	0.0	36	0.0	1500	541	0	36	0.55	0	62.9	58.3	40.2	24.6	24.6
5-6 PM	478	0.0	31	0.0	1500	478	0	31	0.54	0	63.0	58.4	40.4	24.6	24.6
6-7 PM	453	0.0	30	0.0	1500	453	0	30	0.54	0	63.0	58.5	40.4	24.6	24.6
7-8 PM	397	0.0	26	0.0	1500	397	0	26	0.54	0	63.2	58.6	40.6	24.7	24.7
8-9 PM	341	0.0	23	0.0	1500	341	0	23	0.53	0	63.3	58.7	40.8	24.7	24.7
9-10 PM	299	0.0	19	0.0	1500	299	0	19	0.53	0	63.3	58.9	41.0	24.7	24.7
10-11 PM	198	0.0	13	0.0	1500	198	0	13	0.52	0	63.5	59.1	41.3	24.7	24.7
11PM-MID	116	0.0	8	0.0	1500	116	0	8	0.51	0	63.7	59.3	41.6	24.8	24.8

----- SITE BREAKDOWN DELAYS -----	
BREAKDOWN DURATION (MINS)	0
RANGE OF QUEUE DELAY - MIN	0.0
(VEH-H) MAX	0.0
RANGE OF DIVN DELAY - MIN	0.0
(VEH-H) MAX	0.0
AV BREAKDOWNS PER DAY	0.00
AV QUEUE DELAY/DAY (VEH-H)	0.0
AV DIVN DELAY/DAY (VEH-H)	0.0
AV TOTAL DELAY/DAY (VEH-H)	0.0

----- SITE ACCIDENT DELAYS -----	
ACCIDENT DURATION (MINS)	0
RANGE OF QUEUE DELAY - MIN	0.0
(VEH-H) MAX	0.0
RANGE OF DIVN DELAY - MIN	0.0
(VEH-H) MAX	0.0
AV ACCIDENTS PER DAY	0.00
AV QUEUE DELAY/DAY (VEH-H)	0.0
AV DIVN DELAY/DAY (VEH-H)	0.0
AV TOTAL DELAY/DAY (VEH-H)	0.0

AVERAGE ACCIDENT NUMBERS (PIA/DAY)	
MAIN ROUTE WITHOUT WORKS	0.0117
MAIN ROUTE WITH WORKS	0.0127
DIVERSION	0.0063

PIA: Personal Injury Accidents

IMPACTS ON ROAD USERS	
ROAD USER COSTS PER DAY (DOLLARS)	\$1,366
CONGESTED HOURS PER DAY*	0

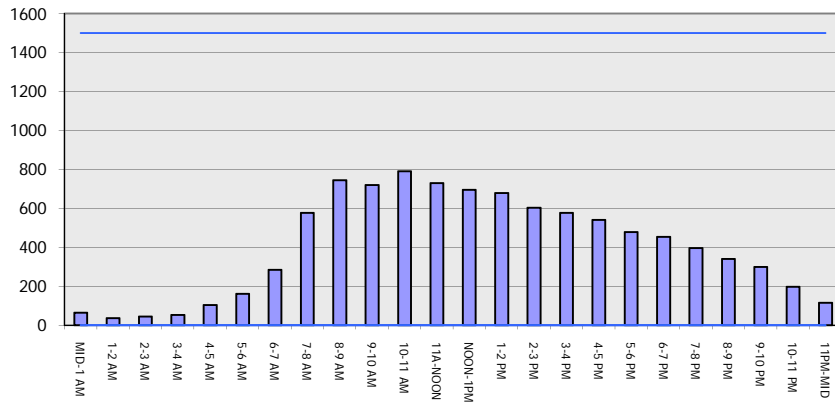
*Delays Exceeding 15 Minutes

USH 151: CTH G TO CTH S (DODGE COUNTY)
CONTINUOUS (24 HOUR) CLOSURE
DIVERSION ROUTE: CTH G - CTH S

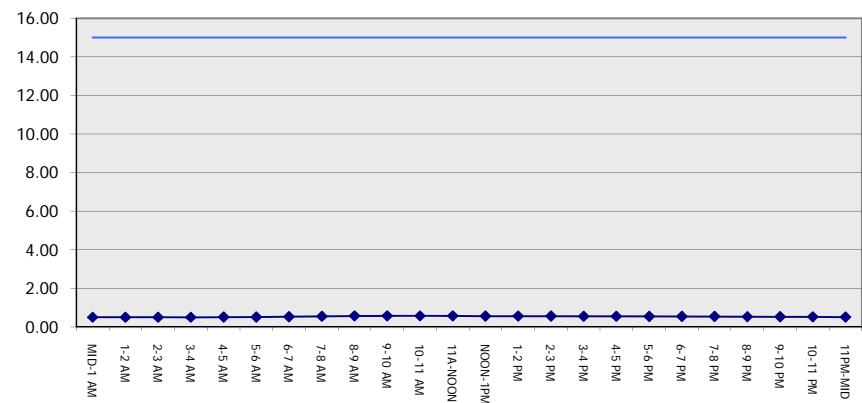
AUGUST
 Analyzed for 2009
 Construction Season

GRAPHICAL REPRESENTATION OF TRAFFIC MODEL INPUT AND OUTPUT
SATURDAY SOUTHBOUND DIRECTION

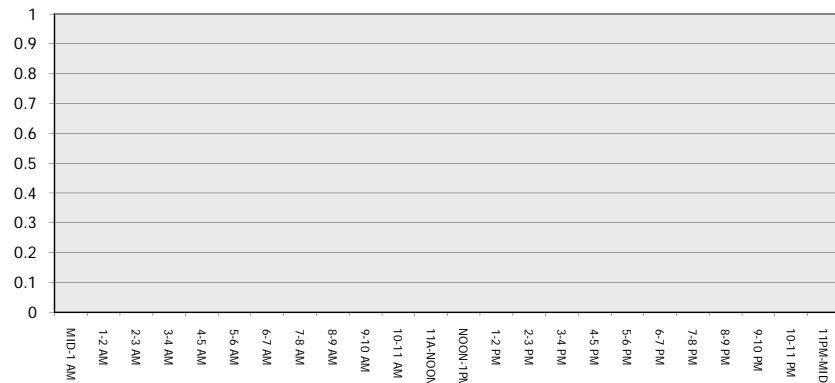
Main Route - Traffic Demand (Vehicles Per Hour)



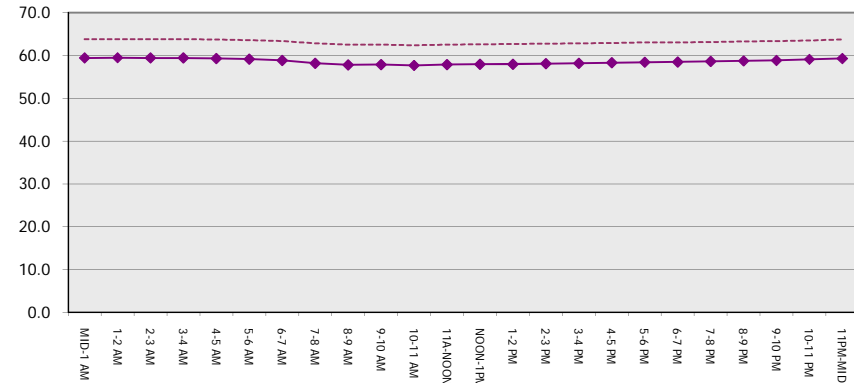
Main Route Average Delay Per Vehicle (Minutes)



Main Route - Average Queue Length (Vehicles)



Main Route - Average Speed (MPH)



USH 151: CTH G TO CTH S (DODGE COUNTY) CONTINUOUS (24 HOUR) CLOSURE DIVERSION ROUTE: CTH G - CTH S	AUGUST
	Analyzed for 2009 Construction Season

SUMMARY OF TRAFFIC MODEL OUTPUT

SATURDAY NORTHBOUND DIRECTION

TIME OF DAY	FLOWS AND CAPACITY IN VEH/HR								AVERAGE SPEEDS IN MPH						
	MAIN		DIVERSION		SITE CAPA CITY	FLOW MAIN ROUTE	FLOW DIVER -TING	TOTAL DIVN FLOW	AV.DEL PER VEH (MINS)	AVERAGE QUEUE (VEH)	MAIN ROUTE		SITE	ALTERNATE ROUTE	
	DEMAND FLOW	PCT HEAVY	NORMAL FLOW	PCT HEAVY							WITHOUT WORK ZN	WITH WORK ZN		WITHOUT WORK ZN	WITH WORK ZN
MID-1 AM	69	0.0	4	0.0	1500	69	0	4	0.51	0	63.8	59.4	41.7	24.8	24.8
1-2 AM	54	0.0	3	0.0	1500	54	0	3	0.50	0	63.8	59.4	41.8	24.8	24.8
2-3 AM	48	0.0	3	0.0	1500	48	0	3	0.50	0	63.8	59.4	41.9	24.8	24.8
3-4 AM	47	0.0	3	0.0	1500	47	0	3	0.50	0	63.8	59.4	41.9	24.8	24.8
4-5 AM	77	0.0	5	0.0	1500	77	0	5	0.51	0	63.8	59.4	41.7	24.8	24.8
5-6 AM	115	0.0	8	0.0	1500	115	0	8	0.51	0	63.7	59.3	41.6	24.8	24.8
6-7 AM	238	0.0	16	0.0	1500	238	0	16	0.52	0	63.5	59.0	41.2	24.7	24.7
7-8 AM	458	0.0	30	0.0	1500	458	0	30	0.54	0	63.0	58.5	40.4	24.6	24.6
8-9 AM	661	0.0	43	0.0	1500	661	0	43	0.56	0	62.7	58.0	39.7	24.5	24.5
9-10 AM	779	0.0	51	0.0	1500	779	0	51	0.57	0	62.5	57.8	39.4	24.5	24.5
10-11 AM	781	0.0	52	0.0	1500	781	0	52	0.57	0	62.5	57.8	39.4	24.5	24.5
11A-NOON	760	0.0	50	0.0	1500	760	0	50	0.57	0	62.5	57.8	39.4	24.5	24.5
NOON-1PM	700	0.0	47	0.0	1500	700	0	47	0.57	0	62.6	57.9	39.6	24.5	24.5
1-2 PM	681	0.0	44	0.0	1500	681	0	44	0.56	0	62.7	57.9	39.7	24.5	24.5
2-3 PM	719	0.0	48	0.0	1500	719	0	48	0.57	0	62.5	57.9	39.6	24.5	24.5
3-4 PM	735	0.0	49	0.0	1500	735	0	49	0.57	0	62.5	57.8	39.6	24.5	24.5
4-5 PM	682	0.0	45	0.0	1500	682	0	45	0.56	0	62.7	57.9	39.7	24.5	24.5
5-6 PM	571	0.0	38	0.0	1500	571	0	38	0.55	0	62.8	58.2	40.1	24.5	24.5
6-7 PM	479	0.0	31	0.0	1500	479	0	31	0.54	0	63.0	58.4	40.4	24.6	24.6
7-8 PM	398	0.0	26	0.0	1500	398	0	26	0.54	0	63.2	58.6	40.6	24.7	24.7
8-9 PM	329	0.0	22	0.0	1500	329	0	22	0.53	0	63.3	58.8	40.9	24.7	24.7
9-10 PM	246	0.0	16	0.0	1500	246	0	16	0.52	0	63.5	59.0	41.2	24.7	24.7
10-11 PM	163	0.0	11	0.0	1500	163	0	11	0.51	0	63.6	59.2	41.4	24.8	24.8
11PM-MID	100	0.0	6	0.0	1500	100	0	6	0.51	0	63.7	59.3	41.7	24.8	24.8

----- SITE BREAKDOWN DELAYS -----	
BREAKDOWN DURATION (MINS)	0
RANGE OF QUEUE DELAY - MIN	0.0
(VEH-H) MAX	0.0
RANGE OF DIVN DELAY - MIN	0.0
(VEH-H) MAX	0.0
AV BREAKDOWNS PER DAY	0.00
AV QUEUE DELAY/DAY (VEH-H)	0.0
AV DIVN DELAY/DAY (VEH-H)	0.0
AV TOTAL DELAY/DAY (VEH-H)	0.0

----- SITE ACCIDENT DELAYS -----	
ACCIDENT DURATION (MINS)	0
RANGE OF QUEUE DELAY - MIN	0.0
(VEH-H) MAX	0.0
RANGE OF DIVN DELAY - MIN	0.0
(VEH-H) MAX	0.0
AV ACCIDENTS PER DAY	0.00
AV QUEUE DELAY/DAY (VEH-H)	0.0
AV DIVN DELAY/DAY (VEH-H)	0.0
AV TOTAL DELAY/DAY (VEH-H)	0.0

AVERAGE ACCIDENT NUMBERS (PIA/DAY)	
MAIN ROUTE WITHOUT WORKS	0.0119
MAIN ROUTE WITH WORKS	0.0130
DIVERSION	0.0064

PIA: Personal Injury Accidents

IMPACTS ON ROAD USERS	
ROAD USER COSTS PER DAY (DOLLARS)	\$1,401
CONGESTED HOURS PER DAY*	0

*Delays Exceeding 15 Minutes

USH 151: CTH G TO CTH S (DODGE COUNTY)
CONTINUOUS (24 HOUR) CLOSURE
DIVERSION ROUTE: CTH G - CTH S

AUGUST
 Analyzed for 2009
 Construction Season

GRAPHICAL REPRESENTATION OF TRAFFIC MODEL INPUT AND OUTPUT
SATURDAY NORTHBOUND DIRECTION

