

USH 151: CTH G TO CTH S (DODGE COUNTY) CONTINUOUS (24 HOUR) CLOSURE DIVERSION ROUTE: CTH G - CTH S	AUGUST
	Analyzed for 2009 Construction Season

SUMMARY OF TRAFFIC MODEL OUTPUT

FRIDAY SOUTHBOUND DIRECTION

TIME OF DAY	FLOWS AND CAPACITY IN VEH/HR								AVERAGE SPEEDS IN MPH						
	MAIN ROUTE		ALTERNATE ROUTE		SITE CAPA CITY	FLOW MAIN ROUTE	FLOW DIVER -TING	TOTAL DIVN FLOW	AV.DEL PER VEH (MINS)	AVERAGE QUEUE (VEH)	MAIN ROUTE		ALTERNATE ROUTE		
	DEMAND FLOW	PCT HEAVY	NORMAL FLOW	PCT HEAVY							WITHOUT WORK ZN	WITH WORK ZN	SITE	WITHOUT WORK ZN	WITH WORK ZN
MID-1 AM	57	0.0	3	0.0	1500	57	0	3	0.50	0	63.8	59.4	41.8	24.8	24.8
1-2 AM	45	0.0	3	0.0	1500	45	0	3	0.50	0	63.8	59.4	41.9	24.8	24.8
2-3 AM	58	0.0	4	0.0	1500	58	0	4	0.50	0	63.8	59.4	41.8	24.8	24.8
3-4 AM	105	0.0	6	0.0	1500	105	0	6	0.51	0	63.7	59.3	41.6	24.8	24.8
4-5 AM	282	0.0	18	0.0	1500	282	0	18	0.53	0	63.4	58.9	41.0	24.7	24.7
5-6 AM	491	0.0	32	0.0	1500	491	0	32	0.55	0	63.0	58.4	40.3	24.6	24.6
6-7 AM	620	0.0	41	0.0	1500	620	0	41	0.56	0	62.7	58.1	39.9	24.5	24.5
7-8 AM	613	0.0	40	0.0	1500	613	0	40	0.56	0	62.8	58.1	39.9	24.5	24.5
8-9 AM	604	0.0	40	0.0	1500	604	0	40	0.56	0	62.8	58.1	39.9	24.5	24.5
9-10 AM	645	0.0	42	0.0	1500	645	0	42	0.56	0	62.7	58.1	39.8	24.5	24.5
10-11 AM	674	0.0	44	0.0	1500	674	0	44	0.56	0	62.7	58.0	39.7	24.5	24.5
11A-NOON	701	0.0	47	0.0	1500	701	0	47	0.57	0	62.6	57.9	39.6	24.5	24.5
NOON-1PM	742	0.0	49	0.0	1500	742	0	49	0.57	0	62.5	57.8	39.5	24.5	24.5
1-2 PM	796	0.0	52	0.0	1500	796	0	52	0.57	0	62.4	57.7	39.4	24.5	24.5
2-3 PM	830	0.0	55	0.0	1500	830	0	55	0.58	0	62.3	57.6	39.2	24.4	24.4
3-4 PM	885	0.0	58	0.0	1500	885	0	58	0.58	0	62.2	57.5	39.1	24.4	24.4
4-5 PM	843	0.0	55	0.0	1500	843	0	55	0.58	0	62.3	57.6	39.2	24.4	24.4
5-6 PM	743	0.0	49	0.0	1500	743	0	49	0.57	0	62.5	57.8	39.5	24.5	24.5
6-7 PM	578	0.0	38	0.0	1500	578	0	38	0.55	0	62.8	58.2	40.1	24.5	24.5
7-8 PM	464	0.0	30	0.0	1500	464	0	30	0.54	0	63.0	58.5	40.4	24.6	24.6
8-9 PM	337	0.0	23	0.0	1500	337	0	23	0.53	0	63.3	58.7	40.9	24.7	24.7
9-10 PM	269	0.0	17	0.0	1500	269	0	17	0.52	0	63.4	58.9	41.0	24.7	24.7
10-11 PM	211	0.0	14	0.0	1500	211	0	14	0.52	0	63.5	59.1	41.2	24.7	24.7
11PM-MID	126	0.0	9	0.0	1500	126	0	9	0.51	0	63.7	59.2	41.5	24.8	24.8

----- SITE BREAKDOWN DELAYS -----	
BREAKDOWN DURATION (MINS)	0
RANGE OF QUEUE DELAY - MIN	0.0
(VEH-H) MAX	0.0
RANGE OF DIVN DELAY - MIN	0.0
(VEH-H) MAX	0.0
AV BREAKDOWNS PER DAY	0.00
AV QUEUE DELAY/DAY (VEH-H)	0.0
AV DIVN DELAY/DAY (VEH-H)	0.0
AV TOTAL DELAY/DAY (VEH-H)	0.0

----- SITE ACCIDENT DELAYS -----	
ACCIDENT DURATION (MINS)	0
RANGE OF QUEUE DELAY - MIN	0.0
(VEH-H) MAX	0.0
RANGE OF DIVN DELAY - MIN	0.0
(VEH-H) MAX	0.0
AV ACCIDENTS PER DAY	0.00
AV QUEUE DELAY/DAY (VEH-H)	0.0
AV DIVN DELAY/DAY (VEH-H)	0.0
AV TOTAL DELAY/DAY (VEH-H)	0.0

AVERAGE ACCIDENT NUMBERS (PIA/DAY)	
MAIN ROUTE WITHOUT WORKS	0.0141
MAIN ROUTE WITH WORKS	0.0154
DIVERSION	0.0076

PIA: Personal Injury Accidents

IMPACTS ON ROAD USERS	
ROAD USER COSTS PER DAY (DOLLARS)	\$1,368
CONGESTED HOURS PER DAY*	0

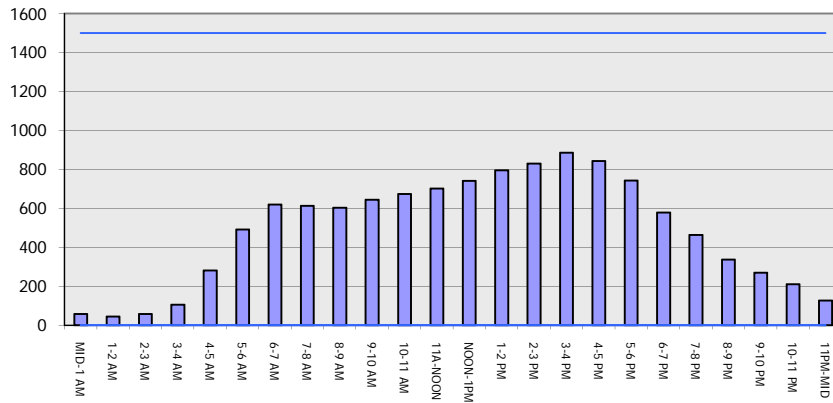
*Delays Exceeding 15 Minutes

USH 151: CTH G TO CTH S (DODGE COUNTY)
CONTINUOUS (24 HOUR) CLOSURE
DIVERSION ROUTE: CTH G - CTH S

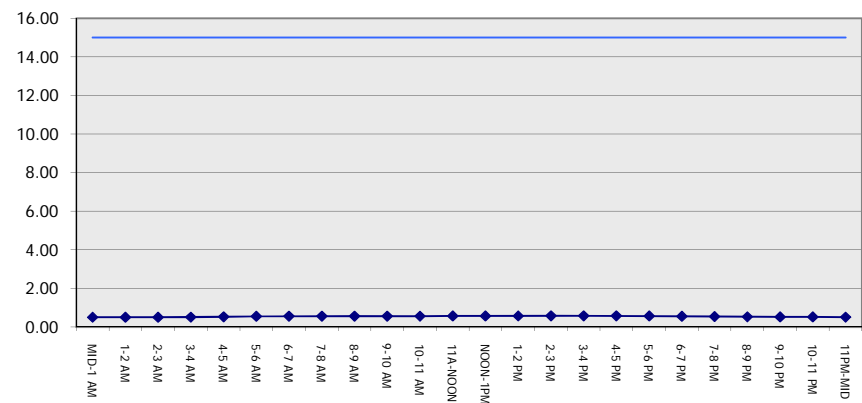
AUGUST
 Analyzed for 2009
 Construction Season

GRAPHICAL REPRESENTATION OF TRAFFIC MODEL INPUT AND OUTPUT
FRIDAY SOUTHBOUND DIRECTION

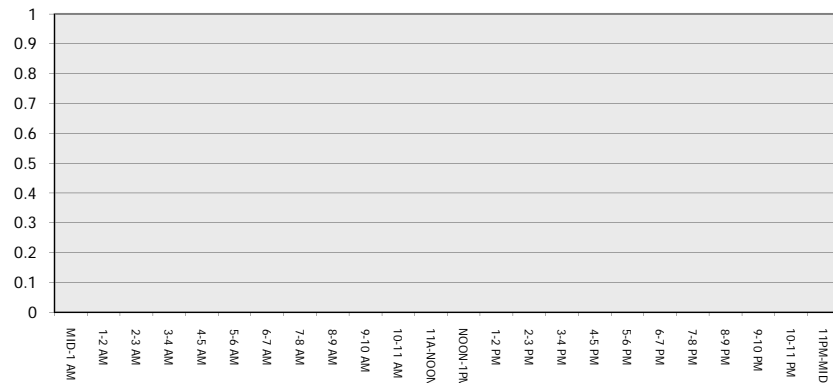
Main Route - Traffic Demand (Vehicles Per Hour)



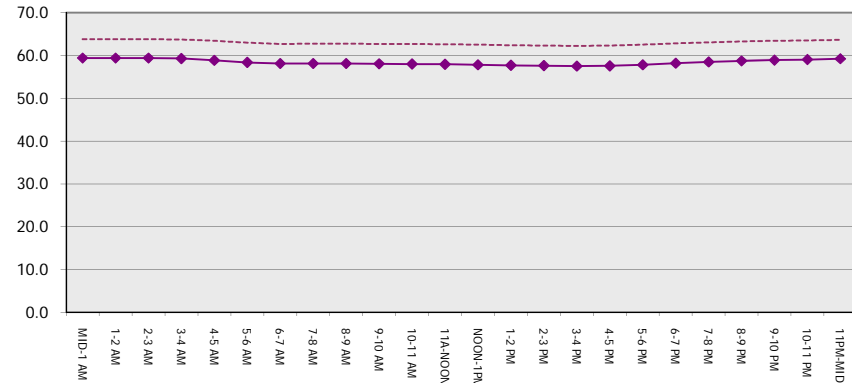
Main Route Average Delay Per Vehicle (Minutes)



Main Route - Average Queue Length (Vehicles)



Main Route - Average Speed (MPH)



USH 151: CTH G TO CTH S (DODGE COUNTY) CONTINUOUS (24 HOUR) CLOSURE DIVERSION ROUTE: CTH G - CTH S	AUGUST
	Analyzed for 2009 Construction Season

SUMMARY OF TRAFFIC MODEL OUTPUT

FRIDAY NORTHBOUND DIRECTION

TIME OF DAY	FLOWS AND CAPACITY IN VEH/HR								AVERAGE SPEEDS IN MPH						
	MAIN		DIVERSION		SITE CAPA CITY	FLOW MAIN ROUTE	FLOW DIVER -TING	TOTAL DIVN FLOW	AV.DEL PER VEH (MINS)	AVERAGE QUEUE (VEH)	MAIN ROUTE		SITE	ALTERNATE ROUTE	
	DEMAND FLOW	PCT HEAVY	NORMAL FLOW	PCT HEAVY							WITHOUT WORK ZN	WITH WORK ZN		WITHOUT WORK ZN	WITH WORK ZN
MID-1 AM	66	0.0	4	0.0	1500	66	0	4	0.50	0	63.8	59.4	41.8	24.8	24.8
1-2 AM	54	0.0	3	0.0	1500	54	0	3	0.50	0	63.8	59.4	41.8	24.8	24.8
2-3 AM	56	0.0	3	0.0	1500	56	0	3	0.50	0	63.8	59.4	41.8	24.8	24.8
3-4 AM	70	0.0	4	0.0	1500	70	0	4	0.51	0	63.8	59.4	41.7	24.8	24.8
4-5 AM	163	0.0	11	0.0	1500	163	0	11	0.51	0	63.6	59.2	41.4	24.8	24.8
5-6 AM	259	0.0	17	0.0	1500	259	0	17	0.52	0	63.4	58.9	41.1	24.7	24.7
6-7 AM	421	0.0	28	0.0	1500	421	0	28	0.54	0	63.1	58.6	40.6	24.7	24.7
7-8 AM	557	0.0	37	0.0	1500	557	0	37	0.55	0	62.8	58.2	40.1	24.5	24.5
8-9 AM	604	0.0	40	0.0	1500	604	0	40	0.56	0	62.8	58.1	39.9	24.5	24.5
9-10 AM	652	0.0	43	0.0	1500	652	0	43	0.56	0	62.7	58.0	39.8	24.5	24.5
10-11 AM	708	0.0	47	0.0	1500	708	0	47	0.57	0	62.6	57.9	39.6	24.5	24.5
11A-NOON	748	0.0	50	0.0	1500	748	0	50	0.57	0	62.5	57.8	39.5	24.5	24.5
NOON-1PM	806	0.0	53	0.0	1500	806	0	53	0.57	0	62.4	57.7	39.3	24.4	24.4
1-2 PM	928	0.0	62	0.0	1500	928	0	62	0.59	0	62.2	57.4	38.9	24.3	24.3
2-3 PM	1044	0.0	69	0.0	1500	1044	0	69	0.60	0	62.0	57.1	38.6	24.3	24.3
3-4 PM	1135	0.0	75	0.0	1500	1135	0	75	0.63	0	61.8	56.8	37.8	24.3	24.3
4-5 PM	1162	0.0	77	0.0	1500	1162	0	77	0.66	0	61.7	56.4	37.0	24.3	24.3
5-6 PM	991	0.0	65	0.0	1500	991	0	65	0.59	0	62.0	57.3	38.8	24.3	24.3
6-7 PM	685	0.0	45	0.0	1500	685	0	45	0.56	0	62.6	57.9	39.7	24.5	24.5
7-8 PM	495	0.0	32	0.0	1500	495	0	32	0.55	0	63.0	58.4	40.3	24.6	24.6
8-9 PM	366	0.0	24	0.0	1500	366	0	24	0.53	0	63.2	58.7	40.7	24.7	24.7
9-10 PM	271	0.0	17	0.0	1500	271	0	17	0.52	0	63.4	58.9	41.0	24.7	24.7
10-11 PM	194	0.0	13	0.0	1500	194	0	13	0.52	0	63.5	59.1	41.3	24.7	24.7
11PM-MID	114	0.0	8	0.0	1500	114	0	8	0.51	0	63.7	59.3	41.6	24.8	24.8

----- SITE BREAKDOWN DELAYS -----	
BREAKDOWN DURATION (MINS)	0
RANGE OF QUEUE DELAY - MIN	0.0
(VEH-H) MAX	0.0
RANGE OF DIVN DELAY - MIN	0.0
(VEH-H) MAX	0.0
AV BREAKDOWNS PER DAY	0.00
AV QUEUE DELAY/DAY (VEH-H)	0.0
AV DIVN DELAY/DAY (VEH-H)	0.0
AV TOTAL DELAY/DAY (VEH-H)	0.0

----- SITE ACCIDENT DELAYS -----	
ACCIDENT DURATION (MINS)	0
RANGE OF QUEUE DELAY - MIN	0.0
(VEH-H) MAX	0.0
RANGE OF DIVN DELAY - MIN	0.0
(VEH-H) MAX	0.0
AV ACCIDENTS PER DAY	0.00
AV QUEUE DELAY/DAY (VEH-H)	0.0
AV DIVN DELAY/DAY (VEH-H)	0.0
AV TOTAL DELAY/DAY (VEH-H)	0.0

AVERAGE ACCIDENT NUMBERS (PIA/DAY)	
MAIN ROUTE WITHOUT WORKS	0.0151
MAIN ROUTE WITH WORKS	0.0165
DIVERSION	0.0082

PIA: Personal Injury Accidents

IMPACTS ON ROAD USERS	
ROAD USER COSTS PER DAY (DOLLARS)	\$1,513
CONGESTED HOURS PER DAY*	0

*Delays Exceeding 15 Minutes

USH 151: CTH G TO CTH S (DODGE COUNTY)
CONTINUOUS (24 HOUR) CLOSURE
DIVERSION ROUTE: CTH G - CTH S

AUGUST
 Analyzed for 2009
 Construction Season

GRAPHICAL REPRESENTATION OF TRAFFIC MODEL INPUT AND OUTPUT
FRIDAY NORTHBOUND DIRECTION

