

USH 151: CTH G TO CTH S (DODGE COUNTY) CONTINUOUS (24 HOUR) CLOSURE DIVERSION ROUTE: CTH G - CTH S	MAY
	Analyzed for 2009 Construction Season

SUMMARY OF TRAFFIC MODEL OUTPUT

SUNDAY SOUTHBOUND DIRECTION

TIME OF DAY	FLOWS AND CAPACITY IN VEH/HR								AVERAGE SPEEDS IN MPH						
	MAIN ROUTE		ALTERNATE ROUTE		SITE CAPA CITY	FLOW MAIN ROUTE	FLOW DIVER -TING	TOTAL DIVN FLOW	AV.DEL PER VEH (MINS)	AVERAGE QUEUE (VEH)	MAIN ROUTE		ALTERNATE ROUTE		
	DEMAND FLOW	PCT HEAVY	NORMAL FLOW	PCT HEAVY							WITHOUT WORK ZN	WITH WORK ZN	SITE	WITHOUT WORK ZN	WITH WORK ZN
MID-1 AM	53	0.0	3	0.0	1500	53	0	3	0.50	0	63.8	59.4	41.8	24.8	24.8
1-2 AM	33	0.0	2	0.0	1500	33	0	2	0.50	0	63.8	59.5	41.9	24.8	24.8
2-3 AM	30	0.0	2	0.0	1500	30	0	2	0.50	0	63.8	59.5	41.9	24.8	24.8
3-4 AM	24	0.0	1	0.0	1500	24	0	1	0.50	0	63.8	59.5	41.9	24.8	24.8
4-5 AM	31	0.0	2	0.0	1500	31	0	2	0.50	0	63.8	59.5	41.9	24.8	24.8
5-6 AM	67	0.0	4	0.0	1500	67	0	4	0.51	0	63.8	59.4	41.8	24.8	24.8
6-7 AM	95	0.0	6	0.0	1500	95	0	6	0.51	0	63.7	59.4	41.7	24.8	24.8
7-8 AM	159	0.0	11	0.0	1500	159	0	11	0.51	0	63.6	59.2	41.4	24.8	24.8
8-9 AM	270	0.0	17	0.0	1500	270	0	17	0.52	0	63.4	58.9	41.0	24.7	24.7
9-10 AM	419	0.0	27	0.0	1500	419	0	27	0.54	0	63.1	58.6	40.6	24.7	24.7
10-11 AM	572	0.0	38	0.0	1500	572	0	38	0.55	0	62.8	58.2	40.1	24.5	24.5
11A-NOON	673	0.0	44	0.0	1500	673	0	44	0.56	0	62.7	58.0	39.7	24.5	24.5
NOON-1PM	703	0.0	46	0.0	1500	703	0	46	0.57	0	62.6	57.9	39.6	24.5	24.5
1-2 PM	663	0.0	43	0.0	1500	663	0	43	0.56	0	62.7	58.0	39.7	24.5	24.5
2-3 PM	744	0.0	49	0.0	1500	744	0	49	0.57	0	62.5	57.8	39.5	24.5	24.5
3-4 PM	784	0.0	52	0.0	1500	784	0	52	0.57	0	62.4	57.8	39.4	24.5	24.5
4-5 PM	776	0.0	51	0.0	1500	776	0	51	0.57	0	62.5	57.8	39.4	24.5	24.5
5-6 PM	708	0.0	46	0.0	1500	708	0	46	0.57	0	62.6	57.9	39.6	24.5	24.5
6-7 PM	624	0.0	41	0.0	1500	624	0	41	0.56	0	62.7	58.1	39.9	24.5	24.5
7-8 PM	521	0.0	35	0.0	1500	521	0	35	0.55	0	62.9	58.3	40.2	24.6	24.6
8-9 PM	381	0.0	25	0.0	1500	381	0	25	0.53	0	63.2	58.7	40.7	24.7	24.7
9-10 PM	254	0.0	16	0.0	1500	254	0	16	0.52	0	63.4	58.9	41.1	24.7	24.7
10-11 PM	156	0.0	10	0.0	1500	156	0	10	0.51	0	63.6	59.2	41.4	24.8	24.8
11PM-MID	65	0.0	4	0.0	1500	65	0	4	0.50	0	63.8	59.4	41.8	24.8	24.8

----- SITE BREAKDOWN DELAYS -----	
BREAKDOWN DURATION (MINS)	0
RANGE OF QUEUE DELAY - MIN	0.0
(VEH-H) MAX	0.0
RANGE OF DIVN DELAY - MIN	0.0
(VEH-H) MAX	0.0
AV BREAKDOWNS PER DAY	0.00
AV QUEUE DELAY/DAY (VEH-H)	0.0
AV DIVN DELAY/DAY (VEH-H)	0.0
AV TOTAL DELAY/DAY (VEH-H)	0.0

----- SITE ACCIDENT DELAYS -----	
ACCIDENT DURATION (MINS)	0
RANGE OF QUEUE DELAY - MIN	0.0
(VEH-H) MAX	0.0
RANGE OF DIVN DELAY - MIN	0.0
(VEH-H) MAX	0.0
AV ACCIDENTS PER DAY	0.00
AV QUEUE DELAY/DAY (VEH-H)	0.0
AV DIVN DELAY/DAY (VEH-H)	0.0
AV TOTAL DELAY/DAY (VEH-H)	0.0

AVERAGE ACCIDENT NUMBERS (PIA/DAY)	
MAIN ROUTE WITHOUT WORKS	0.0106
MAIN ROUTE WITH WORKS	0.0116
DIVERSION	0.0057

PIA: Personal Injury Accidents

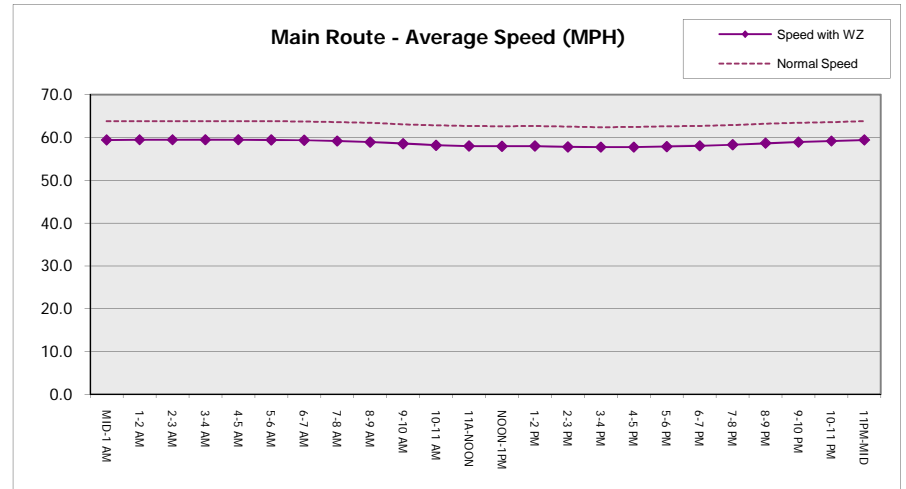
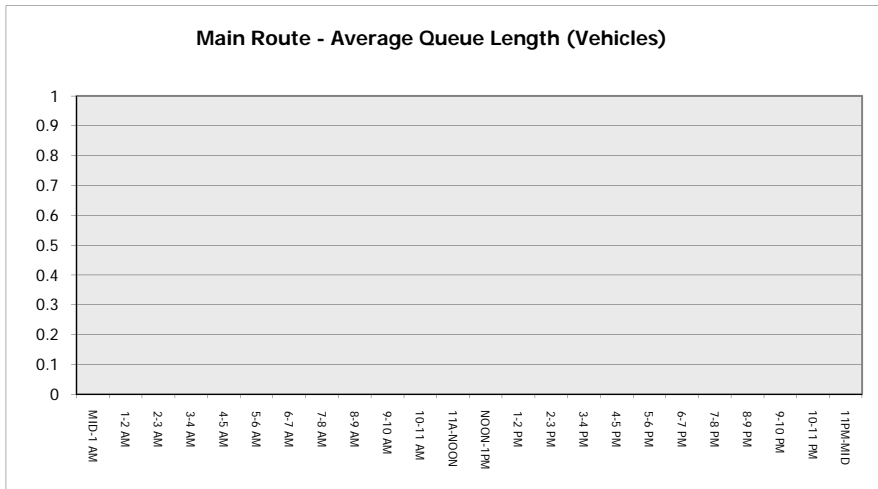
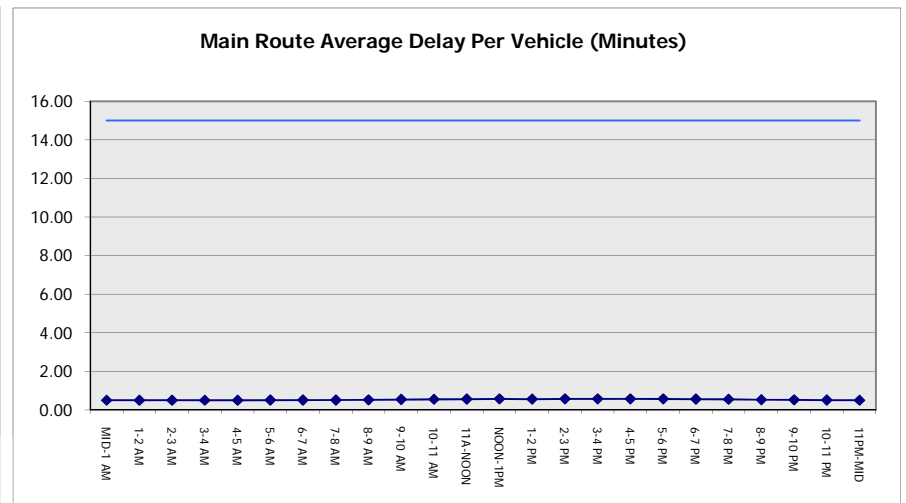
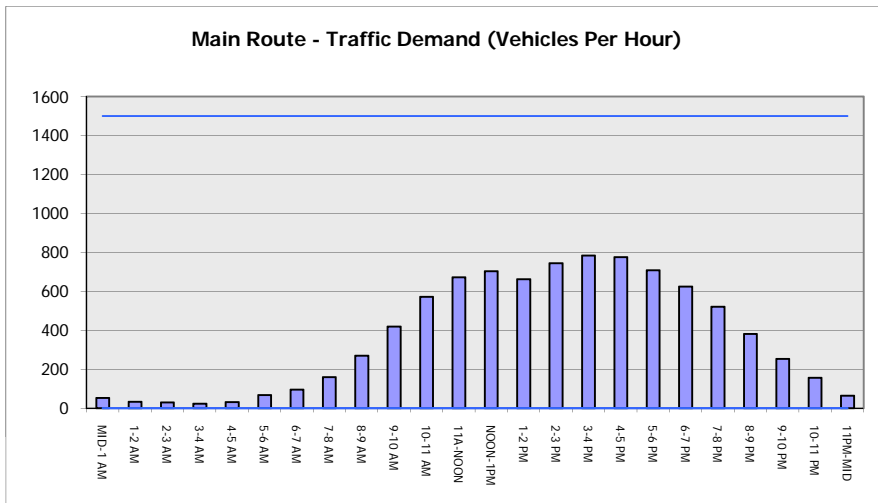
IMPACTS ON ROAD USERS	
ROAD USER COSTS PER DAY (DOLLARS)	\$1,273
CONGESTED HOURS PER DAY*	0

*Delays Exceeding 15 Minutes

USH 151: CTH G TO CTH S (DODGE COUNTY)
CONTINUOUS (24 HOUR) CLOSURE
DIVERSION ROUTE: CTH G - CTH S

MAY
 Analyzed for 2009
 Construction Season

GRAPHICAL REPRESENTATION OF TRAFFIC MODEL INPUT AND OUTPUT
SUNDAY SOUTHBOUND DIRECTION



USH 151: CTH G TO CTH S (DODGE COUNTY) CONTINUOUS (24 HOUR) CLOSURE DIVERSION ROUTE: CTH G - CTH S	MAY
	Analyzed for 2009 Construction Season

SUMMARY OF TRAFFIC MODEL OUTPUT

SUNDAY NORTHBOUND DIRECTION

TIME OF DAY	FLOWS AND CAPACITY IN VEH/HR								AVERAGE SPEEDS IN MPH						
	MAIN		DIVERSION		SITE CAPA CITY	FLOW MAIN ROUTE	FLOW DIVER -TING	TOTAL DIVN FLOW	AV.DEL PER VEH (MINS)	AVERAGE QUEUE (VEH)	MAIN ROUTE		SITE	ALTERNATE ROUTE	
	DEMAND FLOW	PCT HEAVY	NORMAL FLOW	PCT HEAVY							WITHOUT WORK ZN	WITH WORK ZN		WITHOUT WORK ZN	WITH WORK ZN
MID-1 AM	75	0.0	5	0.0	1500	75	0	5	0.51	0	63.8	59.4	41.7	24.8	24.8
1-2 AM	50	0.0	3	0.0	1500	50	0	3	0.50	0	63.8	59.4	41.8	24.8	24.8
2-3 AM	37	0.0	2	0.0	1500	37	0	2	0.50	0	63.8	59.5	41.9	24.8	24.8
3-4 AM	25	0.0	2	0.0	1500	25	0	2	0.50	0	63.8	59.5	41.9	24.8	24.8
4-5 AM	26	0.0	2	0.0	1500	26	0	2	0.50	0	63.8	59.5	41.9	24.8	24.8
5-6 AM	46	0.0	3	0.0	1500	46	0	3	0.50	0	63.8	59.4	41.9	24.8	24.8
6-7 AM	81	0.0	5	0.0	1500	81	0	5	0.51	0	63.8	59.4	41.7	24.8	24.8
7-8 AM	153	0.0	10	0.0	1500	153	0	10	0.51	0	63.6	59.2	41.5	24.8	24.8
8-9 AM	320	0.0	21	0.0	1500	320	0	21	0.53	0	63.3	58.8	40.9	24.7	24.7
9-10 AM	460	0.0	30	0.0	1500	460	0	30	0.54	0	63.0	58.5	40.4	24.6	24.6
10-11 AM	616	0.0	40	0.0	1500	616	0	40	0.56	0	62.8	58.1	39.9	24.5	24.5
11A-NOON	656	0.0	43	0.0	1500	656	0	43	0.56	0	62.7	58.0	39.8	24.5	24.5
NOON-1PM	691	0.0	45	0.0	1500	691	0	45	0.56	0	62.6	57.9	39.7	24.5	24.5
1-2 PM	669	0.0	44	0.0	1500	669	0	44	0.56	0	62.7	58.0	39.7	24.5	24.5
2-3 PM	667	0.0	44	0.0	1500	667	0	44	0.56	0	62.7	58.0	39.7	24.5	24.5
3-4 PM	731	0.0	49	0.0	1500	731	0	49	0.57	0	62.5	57.8	39.6	24.5	24.5
4-5 PM	763	0.0	50	0.0	1500	763	0	50	0.57	0	62.5	57.8	39.4	24.5	24.5
5-6 PM	674	0.0	44	0.0	1500	674	0	44	0.56	0	62.7	58.0	39.7	24.5	24.5
6-7 PM	552	0.0	37	0.0	1500	552	0	37	0.55	0	62.8	58.2	40.1	24.5	24.5
7-8 PM	462	0.0	30	0.0	1500	462	0	30	0.54	0	63.0	58.5	40.4	24.6	24.6
8-9 PM	326	0.0	22	0.0	1500	326	0	22	0.53	0	63.3	58.8	40.9	24.7	24.7
9-10 PM	241	0.0	16	0.0	1500	241	0	16	0.52	0	63.5	59.0	41.2	24.7	24.7
10-11 PM	153	0.0	10	0.0	1500	153	0	10	0.51	0	63.6	59.2	41.5	24.8	24.8
11PM-MID	79	0.0	5	0.0	1500	79	0	5	0.51	0	63.8	59.4	41.7	24.8	24.8

----- SITE BREAKDOWN DELAYS -----	
BREAKDOWN DURATION (MINS)	0
RANGE OF QUEUE DELAY - MIN	0.0
(VEH-H) MAX	0.0
RANGE OF DIVN DELAY - MIN	0.0
(VEH-H) MAX	0.0
AV BREAKDOWNS PER DAY	0.00
AV QUEUE DELAY/DAY (VEH-H)	0.0
AV DIVN DELAY/DAY (VEH-H)	0.0
AV TOTAL DELAY/DAY (VEH-H)	0.0

----- SITE ACCIDENT DELAYS -----	
ACCIDENT DURATION (MINS)	0
RANGE OF QUEUE DELAY - MIN	0.0
(VEH-H) MAX	0.0
RANGE OF DIVN DELAY - MIN	0.0
(VEH-H) MAX	0.0
AV ACCIDENTS PER DAY	0.00
AV QUEUE DELAY/DAY (VEH-H)	0.0
AV DIVN DELAY/DAY (VEH-H)	0.0
AV TOTAL DELAY/DAY (VEH-H)	0.0

AVERAGE ACCIDENT NUMBERS (PIA/DAY)	
MAIN ROUTE WITHOUT WORKS	0.0103
MAIN ROUTE WITH WORKS	0.0112
DIVERSION	0.0056

PIA: Personal Injury Accidents

IMPACTS ON ROAD USERS	
ROAD USER COSTS PER DAY (DOLLARS)	\$1,230
CONGESTED HOURS PER DAY*	0

*Delays Exceeding 15 Minutes

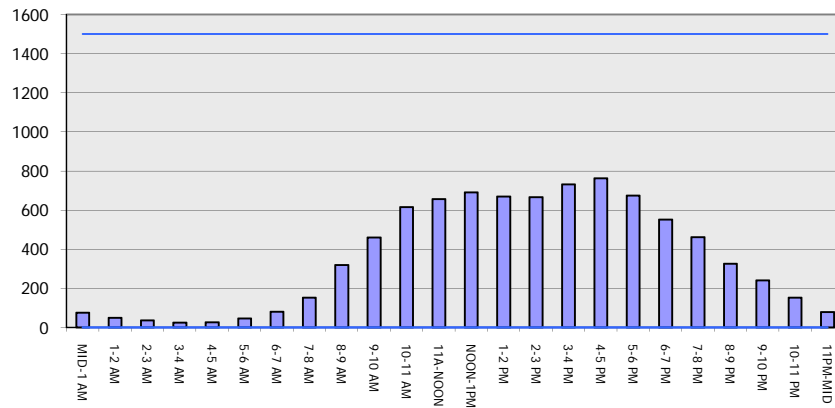
USH 151: CTH G TO CTH S (DODGE COUNTY)
CONTINUOUS (24 HOUR) CLOSURE
DIVERSION ROUTE: CTH G - CTH S

MAY
 Analyzed for 2009
 Construction Season

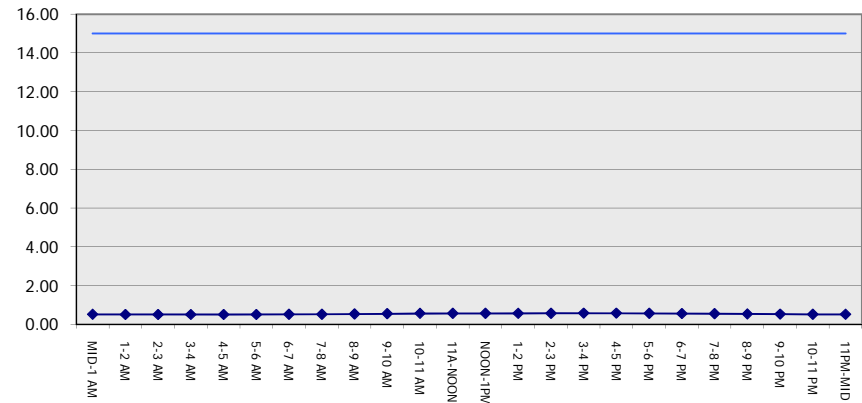
GRAPHICAL REPRESENTATION OF TRAFFIC MODEL INPUT AND OUTPUT

SUNDAY NORTHBOUND DIRECTION

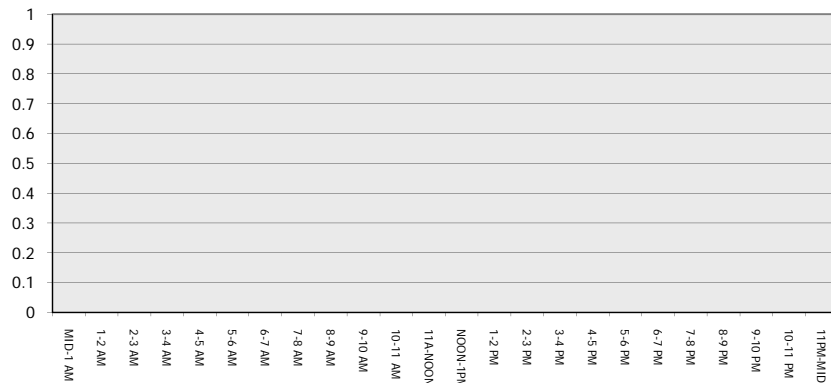
Main Route - Traffic Demand (Vehicles Per Hour)



Main Route Average Delay Per Vehicle (Minutes)



Main Route - Average Queue Length (Vehicles)



Main Route - Average Speed (MPH)

