

USH 151: CTH G TO CTH S (DODGE COUNTY) CONTINUOUS (24 HOUR) CLOSURE DIVERSION ROUTE: CTH G - CTH S	MAY
	Analyzed for 2009 Construction Season

SUMMARY OF TRAFFIC MODEL OUTPUT

SATURDAY SOUTHBOUND DIRECTION

TIME OF DAY	FLOWS AND CAPACITY IN VEH/HR								AVERAGE SPEEDS IN MPH						
	MAIN ROUTE		ALTERNATE ROUTE		SITE CAPA CITY	FLOW MAIN ROUTE	FLOW DIVER -TING	TOTAL DIVN FLOW	AV.DEL PER VEH (MINS)	AVERAGE QUEUE (VEH)	MAIN ROUTE		ALTERNATE ROUTE		
	DEMAND FLOW	PCT HEAVY	NORMAL FLOW	PCT HEAVY							WITHOUT WORK ZN	WITH WORK ZN	SITE	WITHOUT WORK ZN	WITH WORK ZN
MID-1 AM	61	0.0	4	0.0	1500	61	0	4	0.50	0	63.8	59.4	41.8	24.8	24.8
1-2 AM	37	0.0	2	0.0	1500	37	0	2	0.50	0	63.8	59.5	41.9	24.8	24.8
2-3 AM	39	0.0	2	0.0	1500	39	0	2	0.50	0	63.8	59.5	41.9	24.8	24.8
3-4 AM	41	0.0	2	0.0	1500	41	0	2	0.50	0	63.8	59.5	41.9	24.8	24.8
4-5 AM	66	0.0	4	0.0	1500	66	0	4	0.50	0	63.8	59.4	41.8	24.8	24.8
5-6 AM	123	0.0	8	0.0	1500	123	0	8	0.51	0	63.7	59.2	41.5	24.8	24.8
6-7 AM	200	0.0	13	0.0	1500	200	0	13	0.52	0	63.5	59.1	41.3	24.7	24.7
7-8 AM	361	0.0	24	0.0	1500	361	0	24	0.53	0	63.2	58.7	40.7	24.7	24.7
8-9 AM	493	0.0	32	0.0	1500	493	0	32	0.55	0	63.0	58.4	40.3	24.6	24.6
9-10 AM	637	0.0	42	0.0	1500	637	0	42	0.56	0	62.7	58.1	39.9	24.5	24.5
10-11 AM	699	0.0	46	0.0	1500	699	0	46	0.56	0	62.6	57.9	39.7	24.5	24.5
11A-NOON	674	0.0	44	0.0	1500	674	0	44	0.56	0	62.7	58.0	39.7	24.5	24.5
NOON-1PM	648	0.0	42	0.0	1500	648	0	42	0.56	0	62.7	58.1	39.8	24.5	24.5
1-2 PM	589	0.0	39	0.0	1500	589	0	39	0.55	0	62.8	58.2	40.0	24.5	24.5
2-3 PM	588	0.0	39	0.0	1500	588	0	39	0.55	0	62.8	58.2	40.0	24.5	24.5
3-4 PM	587	0.0	39	0.0	1500	587	0	39	0.55	0	62.8	58.2	40.0	24.5	24.5
4-5 PM	543	0.0	36	0.0	1500	543	0	36	0.55	0	62.9	58.3	40.2	24.6	24.6
5-6 PM	487	0.0	32	0.0	1500	487	0	32	0.54	0	63.0	58.4	40.4	24.6	24.6
6-7 PM	424	0.0	28	0.0	1500	424	0	28	0.54	0	63.1	58.6	40.6	24.7	24.7
7-8 PM	349	0.0	23	0.0	1500	349	0	23	0.53	0	63.3	58.7	40.8	24.7	24.7
8-9 PM	298	0.0	19	0.0	1500	298	0	19	0.53	0	63.3	58.9	41.0	24.7	24.7
9-10 PM	260	0.0	17	0.0	1500	260	0	17	0.52	0	63.4	58.9	41.1	24.7	24.7
10-11 PM	196	0.0	13	0.0	1500	196	0	13	0.52	0	63.5	59.1	41.3	24.7	24.7
11PM-MID	114	0.0	8	0.0	1500	114	0	8	0.51	0	63.7	59.3	41.6	24.8	24.8

----- SITE BREAKDOWN DELAYS -----	
BREAKDOWN DURATION (MINS)	0
RANGE OF QUEUE DELAY - MIN	0.0
(VEH-H) MAX	0.0
RANGE OF DIVN DELAY - MIN	0.0
(VEH-H) MAX	0.0
AV BREAKDOWNS PER DAY	0.00
AV QUEUE DELAY/DAY (VEH-H)	0.0
AV DIVN DELAY/DAY (VEH-H)	0.0
AV TOTAL DELAY/DAY (VEH-H)	0.0

----- SITE ACCIDENT DELAYS -----	
ACCIDENT DURATION (MINS)	0
RANGE OF QUEUE DELAY - MIN	0.0
(VEH-H) MAX	0.0
RANGE OF DIVN DELAY - MIN	0.0
(VEH-H) MAX	0.0
AV ACCIDENTS PER DAY	0.00
AV QUEUE DELAY/DAY (VEH-H)	0.0
AV DIVN DELAY/DAY (VEH-H)	0.0
AV TOTAL DELAY/DAY (VEH-H)	0.0

AVERAGE ACCIDENT NUMBERS (PIA/DAY)	
MAIN ROUTE WITHOUT WORKS	0.0102
MAIN ROUTE WITH WORKS	0.0112
DIVERSION	0.0055

PIA: Personal Injury Accidents

IMPACTS ON ROAD USERS	
ROAD USER COSTS PER DAY (DOLLARS)	\$1,190
CONGESTED HOURS PER DAY*	0

*Delays Exceeding 15 Minutes

USH 151: CTH G TO CTH S (DODGE COUNTY)
CONTINUOUS (24 HOUR) CLOSURE
DIVERSION ROUTE: CTH G - CTH S

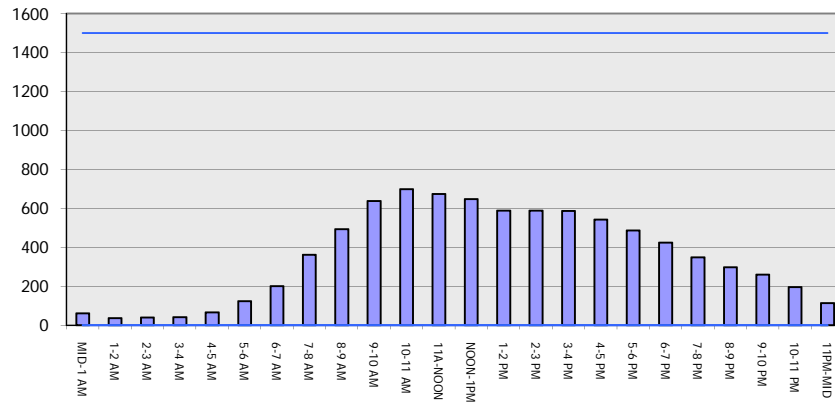
MAY

Analyzed for 2009
 Construction Season

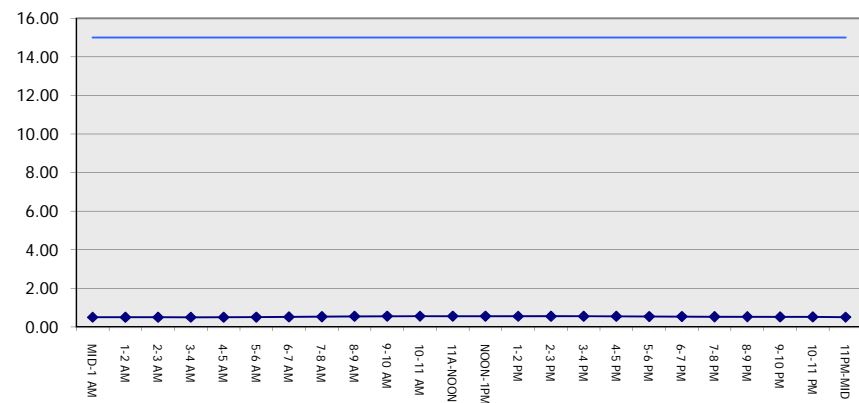
GRAPHICAL REPRESENTATION OF TRAFFIC MODEL INPUT AND OUTPUT

SATURDAY SOUTHBOUND DIRECTION

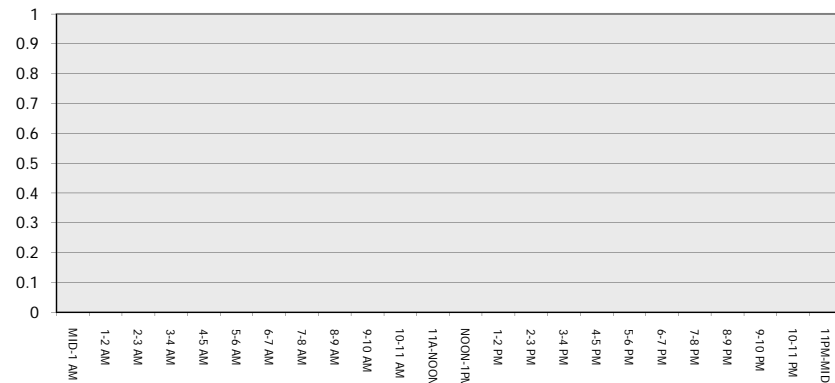
Main Route - Traffic Demand (Vehicles Per Hour)



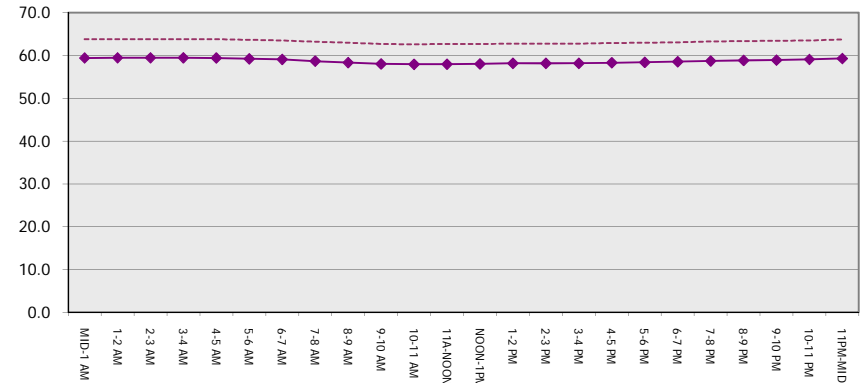
Main Route Average Delay Per Vehicle (Minutes)



Main Route - Average Queue Length (Vehicles)



Main Route - Average Speed (MPH)



USH 151: CTH G TO CTH S (DODGE COUNTY) CONTINUOUS (24 HOUR) CLOSURE DIVERSION ROUTE: CTH G - CTH S	MAY
	Analyzed for 2009 Construction Season

SUMMARY OF TRAFFIC MODEL OUTPUT

SATURDAY NORTHBOUND DIRECTION

TIME OF DAY	FLOWS AND CAPACITY IN VEH/HR								AVERAGE SPEEDS IN MPH						
	MAIN		DIVERSION		SITE CAPA CITY	FLOW MAIN ROUTE	FLOW DIVER -TING	TOTAL DIVN FLOW	AV.DEL PER VEH (MINS)	AVERAGE QUEUE (VEH)	MAIN ROUTE		SITE	ALTERNATE ROUTE	
	DEMAND FLOW	PCT HEAVY	NORMAL FLOW	PCT HEAVY							WITHOUT WORK ZN	WITH WORK ZN		WITHOUT WORK ZN	WITH WORK ZN
MID-1 AM	79	0.0	5	0.0	1500	79	0	5	0.51	0	63.8	59.4	41.7	24.8	24.8
1-2 AM	46	0.0	3	0.0	1500	46	0	3	0.50	0	63.8	59.4	41.9	24.8	24.8
2-3 AM	45	0.0	3	0.0	1500	45	0	3	0.50	0	63.8	59.4	41.9	24.8	24.8
3-4 AM	39	0.0	2	0.0	1500	39	0	2	0.50	0	63.8	59.5	41.9	24.8	24.8
4-5 AM	54	0.0	3	0.0	1500	54	0	3	0.50	0	63.8	59.4	41.8	24.8	24.8
5-6 AM	89	0.0	5	0.0	1500	89	0	5	0.51	0	63.7	59.4	41.7	24.8	24.8
6-7 AM	183	0.0	12	0.0	1500	183	0	12	0.52	0	63.6	59.1	41.4	24.8	24.8
7-8 AM	353	0.0	23	0.0	1500	353	0	23	0.53	0	63.2	58.7	40.8	24.7	24.7
8-9 AM	521	0.0	35	0.0	1500	521	0	35	0.55	0	62.9	58.3	40.2	24.6	24.6
9-10 AM	656	0.0	43	0.0	1500	656	0	43	0.56	0	62.7	58.0	39.8	24.5	24.5
10-11 AM	711	0.0	46	0.0	1500	711	0	46	0.57	0	62.6	57.9	39.6	24.5	24.5
11A-NOON	694	0.0	45	0.0	1500	694	0	45	0.56	0	62.6	57.9	39.7	24.5	24.5
NOON-1PM	644	0.0	42	0.0	1500	644	0	42	0.56	0	62.7	58.1	39.8	24.5	24.5
1-2 PM	650	0.0	43	0.0	1500	650	0	43	0.56	0	62.7	58.1	39.8	24.5	24.5
2-3 PM	646	0.0	42	0.0	1500	646	0	42	0.56	0	62.7	58.1	39.8	24.5	24.5
3-4 PM	632	0.0	41	0.0	1500	632	0	41	0.56	0	62.7	58.1	39.9	24.5	24.5
4-5 PM	644	0.0	42	0.0	1500	644	0	42	0.56	0	62.7	58.1	39.8	24.5	24.5
5-6 PM	565	0.0	37	0.0	1500	565	0	37	0.55	0	62.8	58.2	40.1	24.5	24.5
6-7 PM	454	0.0	30	0.0	1500	454	0	30	0.54	0	63.0	58.5	40.4	24.6	24.6
7-8 PM	409	0.0	27	0.0	1500	409	0	27	0.54	0	63.2	58.6	40.6	24.7	24.7
8-9 PM	301	0.0	19	0.0	1500	301	0	19	0.53	0	63.3	58.9	40.9	24.7	24.7
9-10 PM	269	0.0	17	0.0	1500	269	0	17	0.52	0	63.4	58.9	41.0	24.7	24.7
10-11 PM	193	0.0	13	0.0	1500	193	0	13	0.52	0	63.5	59.1	41.3	24.7	24.7
11PM-MID	116	0.0	8	0.0	1500	116	0	8	0.51	0	63.7	59.3	41.6	24.8	24.8

----- SITE BREAKDOWN DELAYS -----	
BREAKDOWN DURATION (MINS)	0
RANGE OF QUEUE DELAY - MIN	0.0
(VEH-H) MAX	0.0
RANGE OF DIVN DELAY - MIN	0.0
(VEH-H) MAX	0.0
AV BREAKDOWNS PER DAY	0.00
AV QUEUE DELAY/DAY (VEH-H)	0.0
AV DIVN DELAY/DAY (VEH-H)	0.0
AV TOTAL DELAY/DAY (VEH-H)	0.0

----- SITE ACCIDENT DELAYS -----	
ACCIDENT DURATION (MINS)	0
RANGE OF QUEUE DELAY - MIN	0.0
(VEH-H) MAX	0.0
RANGE OF DIVN DELAY - MIN	0.0
(VEH-H) MAX	0.0
AV ACCIDENTS PER DAY	0.00
AV QUEUE DELAY/DAY (VEH-H)	0.0
AV DIVN DELAY/DAY (VEH-H)	0.0
AV TOTAL DELAY/DAY (VEH-H)	0.0

AVERAGE ACCIDENT NUMBERS (PIA/DAY)	
MAIN ROUTE WITHOUT WORKS	0.0108
MAIN ROUTE WITH WORKS	0.0118
DIVERSION	0.0058

PIA: Personal Injury Accidents

IMPACTS ON ROAD USERS	
ROAD USER COSTS PER DAY (DOLLARS)	\$1,269
CONGESTED HOURS PER DAY*	0

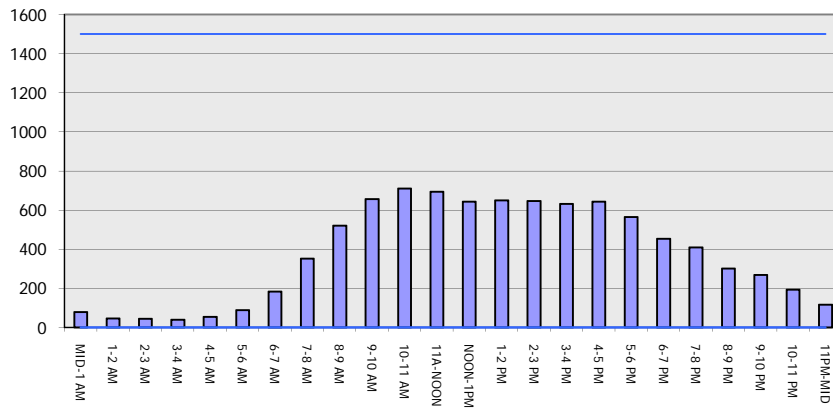
*Delays Exceeding 15 Minutes

**USH 151: CTH G TO CTH S (DODGE COUNTY)
 CONTINUOUS (24 HOUR) CLOSURE
 DIVERSION ROUTE: CTH G - CTH S**

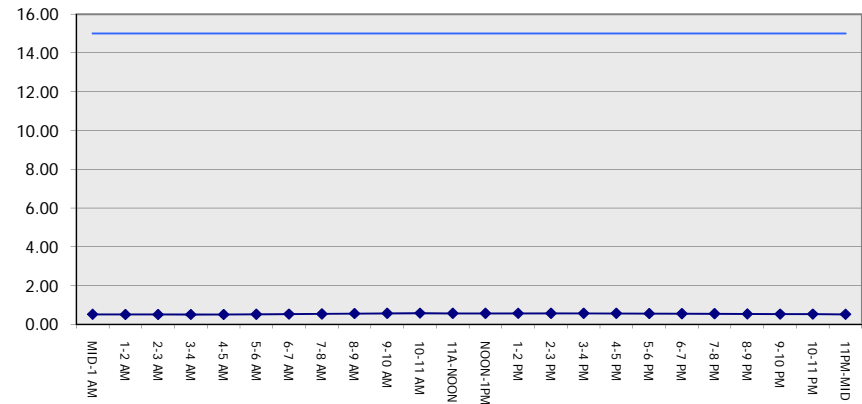
MAY
 Analyzed for 2009
 Construction Season

GRAPHICAL REPRESENTATION OF TRAFFIC MODEL INPUT AND OUTPUT
SATURDAY NORTHBOUND DIRECTION

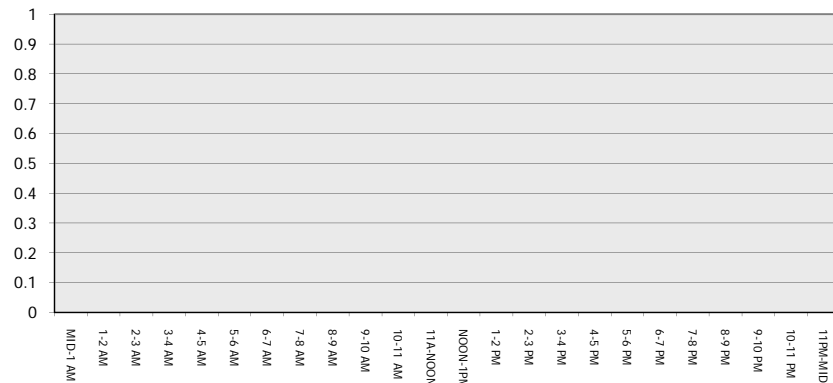
Main Route - Traffic Demand (Vehicles Per Hour)



Main Route Average Delay Per Vehicle (Minutes)



Main Route - Average Queue Length (Vehicles)



Main Route - Average Speed (MPH)

