

USH 151: CTH G TO CTH S (DODGE COUNTY) CONTINUOUS (24 HOUR) CLOSURE DIVERSION ROUTE: CTH G - CTH S	MAY
	Analyzed for 2009 Construction Season

SUMMARY OF TRAFFIC MODEL OUTPUT

MON-THUR SOUTHBOUND DIRECTION

TIME OF DAY	FLOWS AND CAPACITY IN VEH/HR								AVERAGE SPEEDS IN MPH						
	MAIN ROUTE		ALTERNATE ROUTE		SITE CAPA CITY	FLOW MAIN ROUTE	FLOW DIVER -TING	TOTAL DIVN FLOW	AV.DEL PER VEH (MINS)	AVERAGE QUEUE (VEH)	MAIN ROUTE		SITE	ALTERNATE ROUTE	
	DEMAND FLOW	PCT HEAVY	NORMAL FLOW	PCT HEAVY							WITHOUT WORK ZN	WITH WORK ZN		WITHOUT WORK ZN	WITH WORK ZN
MID-1 AM	34	0.0	2	0.0	1500	34	0	2	0.50	0	63.8	59.5	41.9	24.8	24.8
1-2 AM	30	0.0	2	0.0	1500	30	0	2	0.50	0	63.8	59.5	41.9	24.8	24.8
2-3 AM	41	0.0	2	0.0	1500	41	0	2	0.50	0	63.8	59.5	41.9	24.8	24.8
3-4 AM	65	0.0	4	0.0	1500	65	0	4	0.50	0	63.8	59.4	41.8	24.8	24.8
4-5 AM	150	0.0	10	0.0	1500	150	0	10	0.51	0	63.6	59.2	41.5	24.8	24.8
5-6 AM	457	0.0	30	0.0	1500	457	0	30	0.54	0	63.0	58.5	40.4	24.6	24.6
6-7 AM	636	0.0	42	0.0	1500	636	0	42	0.56	0	62.7	58.1	39.9	24.5	24.5
7-8 AM	716	0.0	48	0.0	1500	716	0	48	0.57	0	62.6	57.9	39.6	24.5	24.5
8-9 AM	577	0.0	38	0.0	1500	577	0	38	0.55	0	62.8	58.2	40.1	24.5	24.5
9-10 AM	517	0.0	35	0.0	1500	517	0	35	0.55	0	62.9	58.3	40.2	24.6	24.6
10-11 AM	485	0.0	32	0.0	1500	485	0	32	0.54	0	63.0	58.4	40.4	24.6	24.6
11A-NOON	491	0.0	32	0.0	1500	491	0	32	0.55	0	63.0	58.4	40.3	24.6	24.6
NOON-1PM	507	0.0	34	0.0	1500	507	0	34	0.55	0	63.0	58.4	40.2	24.6	24.6
1-2 PM	542	0.0	36	0.0	1500	542	0	36	0.55	0	62.9	58.3	40.2	24.6	24.6
2-3 PM	558	0.0	37	0.0	1500	558	0	37	0.55	0	62.8	58.2	40.1	24.5	24.5
3-4 PM	615	0.0	40	0.0	1500	615	0	40	0.56	0	62.8	58.1	39.9	24.5	24.5
4-5 PM	649	0.0	43	0.0	1500	649	0	43	0.56	0	62.7	58.1	39.8	24.5	24.5
5-6 PM	573	0.0	38	0.0	1500	573	0	38	0.55	0	62.8	58.2	40.1	24.5	24.5
6-7 PM	404	0.0	27	0.0	1500	404	0	27	0.54	0	63.2	58.6	40.6	24.7	24.7
7-8 PM	307	0.0	21	0.0	1500	307	0	21	0.53	0	63.3	58.8	40.9	24.7	24.7
8-9 PM	269	0.0	17	0.0	1500	269	0	17	0.52	0	63.4	58.9	41.0	24.7	24.7
9-10 PM	204	0.0	14	0.0	1500	204	0	14	0.52	0	63.5	59.1	41.3	24.7	24.7
10-11 PM	125	0.0	9	0.0	1500	125	0	9	0.51	0	63.7	59.2	41.5	24.8	24.8
11PM-MID	57	0.0	4	0.0	1500	57	0	4	0.50	0	63.8	59.4	41.8	24.8	24.8

----- SITE BREAKDOWN DELAYS -----	
BREAKDOWN DURATION (MINS)	0
RANGE OF QUEUE DELAY - MIN	0.0
(VEH-H) MAX	0.0
RANGE OF DIVN DELAY - MIN	0.0
(VEH-H) MAX	0.0
AV BREAKDOWNS PER DAY	0.00
AV QUEUE DELAY/DAY (VEH-H)	0.0
AV DIVN DELAY/DAY (VEH-H)	0.0
AV TOTAL DELAY/DAY (VEH-H)	0.0

----- SITE ACCIDENT DELAYS -----	
ACCIDENT DURATION (MINS)	0
RANGE OF QUEUE DELAY - MIN	0.0
(VEH-H) MAX	0.0
RANGE OF DIVN DELAY - MIN	0.0
(VEH-H) MAX	0.0
AV ACCIDENTS PER DAY	0.00
AV QUEUE DELAY/DAY (VEH-H)	0.0
AV DIVN DELAY/DAY (VEH-H)	0.0
AV TOTAL DELAY/DAY (VEH-H)	0.0

AVERAGE ACCIDENT NUMBERS (PIA/DAY)	
MAIN ROUTE WITHOUT WORKS	0.0108
MAIN ROUTE WITH WORKS	0.0118
DIVERSION	0.0059

PIA: Personal Injury Accidents

IMPACTS ON ROAD USERS	
ROAD USER COSTS PER DAY (DOLLARS)	\$995
CONGESTED HOURS PER DAY*	0

*Delays Exceeding 15 Minutes

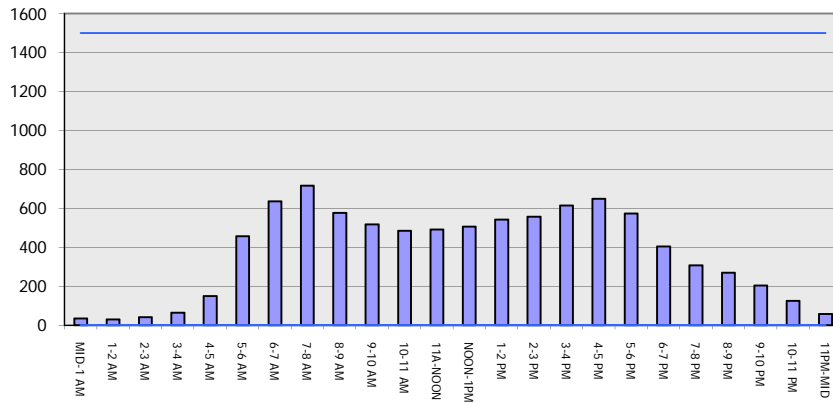
USH 151: CTH G TO CTH S (DODGE COUNTY)
CONTINUOUS (24 HOUR) CLOSURE
DIVERSION ROUTE: CTH G - CTH S

MAY
 Analyzed for 2009
 Construction Season

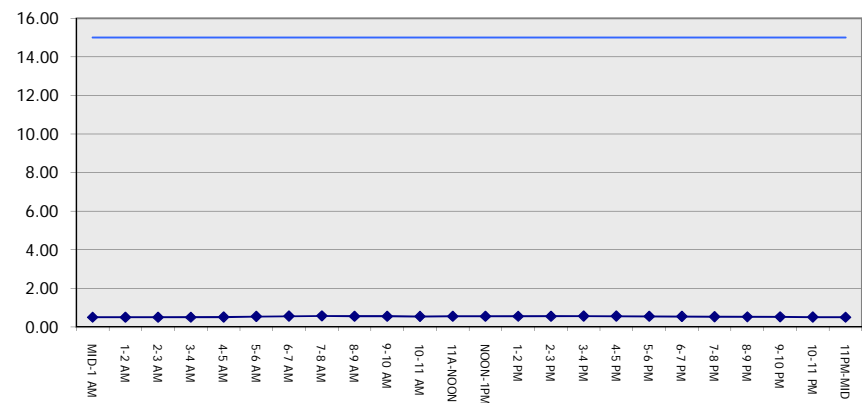
GRAPHICAL REPRESENTATION OF TRAFFIC MODEL INPUT AND OUTPUT

MON-THUR SOUTHBOUND DIRECTION

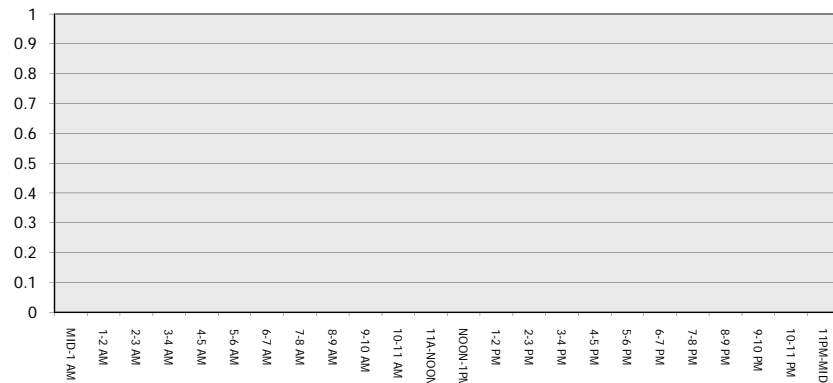
Main Route - Traffic Demand (Vehicles Per Hour)



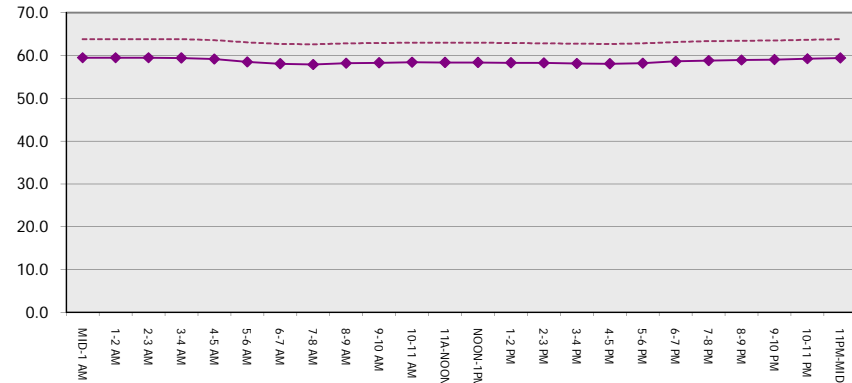
Main Route Average Delay Per Vehicle (Minutes)



Main Route - Average Queue Length (Vehicles)



Main Route - Average Speed (MPH)



USH 151: CTH G TO CTH S (DODGE COUNTY) CONTINUOUS (24 HOUR) CLOSURE DIVERSION ROUTE: CTH G - CTH S	MAY
	Analyzed for 2009 Construction Season

SUMMARY OF TRAFFIC MODEL OUTPUT

MON-THUR NORTHBOUND DIRECTION

TIME OF DAY	FLOWS AND CAPACITY IN VEH/HR								AVERAGE SPEEDS IN MPH						
	MAIN		DIVERSION		SITE CAPA CITY	FLOW MAIN ROUTE	FLOW DIVER -TING	TOTAL DIVN FLOW	AV.DEL PER VEH (MINS)	AVERAGE QUEUE (VEH)	MAIN ROUTE		SITE	ALTERNATE ROUTE	
	DEMAND FLOW	PCT HEAVY	NORMAL FLOW	PCT HEAVY							WITHOUT WORK ZN	WITH WORK ZN		WITHOUT WORK ZN	WITH WORK ZN
MID-1 AM	54	0.0	3	0.0	1500	54	0	3	0.50	0	63.8	59.4	41.8	24.8	24.8
1-2 AM	44	0.0	3	0.0	1500	44	0	3	0.50	0	63.8	59.5	41.9	24.8	24.8
2-3 AM	41	0.0	2	0.0	1500	41	0	2	0.50	0	63.8	59.5	41.9	24.8	24.8
3-4 AM	45	0.0	3	0.0	1500	45	0	3	0.50	0	63.8	59.4	41.9	24.8	24.8
4-5 AM	86	0.0	5	0.0	1500	86	0	5	0.51	0	63.7	59.4	41.7	24.8	24.8
5-6 AM	202	0.0	13	0.0	1500	202	0	13	0.52	0	63.5	59.1	41.3	24.7	24.7
6-7 AM	372	0.0	25	0.0	1500	372	0	25	0.53	0	63.2	58.7	40.7	24.7	24.7
7-8 AM	511	0.0	34	0.0	1500	511	0	34	0.55	0	63.0	58.4	40.2	24.6	24.6
8-9 AM	485	0.0	31	0.0	1500	485	0	31	0.54	0	63.0	58.4	40.4	24.6	24.6
9-10 AM	461	0.0	30	0.0	1500	461	0	30	0.54	0	63.0	58.5	40.4	24.6	24.6
10-11 AM	445	0.0	29	0.0	1500	445	0	29	0.54	0	63.1	58.5	40.5	24.6	24.6
11A-NOON	456	0.0	30	0.0	1500	456	0	30	0.54	0	63.0	58.5	40.4	24.6	24.6
NOON-1PM	494	0.0	32	0.0	1500	494	0	32	0.55	0	63.0	58.4	40.3	24.6	24.6
1-2 PM	537	0.0	36	0.0	1500	537	0	36	0.55	0	62.9	58.3	40.2	24.6	24.6
2-3 PM	666	0.0	44	0.0	1500	666	0	44	0.56	0	62.7	58.0	39.7	24.5	24.5
3-4 PM	795	0.0	52	0.0	1500	795	0	52	0.57	0	62.4	57.7	39.4	24.5	24.5
4-5 PM	913	0.0	61	0.0	1500	913	0	61	0.59	0	62.2	57.4	39.0	24.4	24.4
5-6 PM	760	0.0	50	0.0	1500	760	0	50	0.57	0	62.5	57.8	39.4	24.5	24.5
6-7 PM	466	0.0	30	0.0	1500	466	0	30	0.54	0	63.0	58.4	40.4	24.6	24.6
7-8 PM	318	0.0	21	0.0	1500	318	0	21	0.53	0	63.3	58.8	40.9	24.7	24.7
8-9 PM	263	0.0	17	0.0	1500	263	0	17	0.52	0	63.4	58.9	41.1	24.7	24.7
9-10 PM	203	0.0	13	0.0	1500	203	0	13	0.52	0	63.5	59.1	41.3	24.7	24.7
10-11 PM	158	0.0	11	0.0	1500	158	0	11	0.51	0	63.6	59.2	41.4	24.8	24.8
11PM-MID	95	0.0	6	0.0	1500	95	0	6	0.51	0	63.7	59.4	41.7	24.8	24.8

----- SITE BREAKDOWN DELAYS -----	
BREAKDOWN DURATION (MINS)	0
RANGE OF QUEUE DELAY - MIN	0.0
(VEH-H) MAX	0.0
RANGE OF DIVN DELAY - MIN	0.0
(VEH-H) MAX	0.0
AV BREAKDOWNS PER DAY	0.00
AV QUEUE DELAY/DAY (VEH-H)	0.0
AV DIVN DELAY/DAY (VEH-H)	0.0
AV TOTAL DELAY/DAY (VEH-H)	0.0

----- SITE ACCIDENT DELAYS -----	
ACCIDENT DURATION (MINS)	0
RANGE OF QUEUE DELAY - MIN	0.0
(VEH-H) MAX	0.0
RANGE OF DIVN DELAY - MIN	0.0
(VEH-H) MAX	0.0
AV ACCIDENTS PER DAY	0.00
AV QUEUE DELAY/DAY (VEH-H)	0.0
AV DIVN DELAY/DAY (VEH-H)	0.0
AV TOTAL DELAY/DAY (VEH-H)	0.0

AVERAGE ACCIDENT NUMBERS (PIA/DAY)	
MAIN ROUTE WITHOUT WORKS	0.0107
MAIN ROUTE WITH WORKS	0.0116
DIVERSION	0.0057

PIA: Personal Injury Accidents

IMPACTS ON ROAD USERS	
ROAD USER COSTS PER DAY (DOLLARS)	\$983
CONGESTED HOURS PER DAY*	0

*Delays Exceeding 15 Minutes

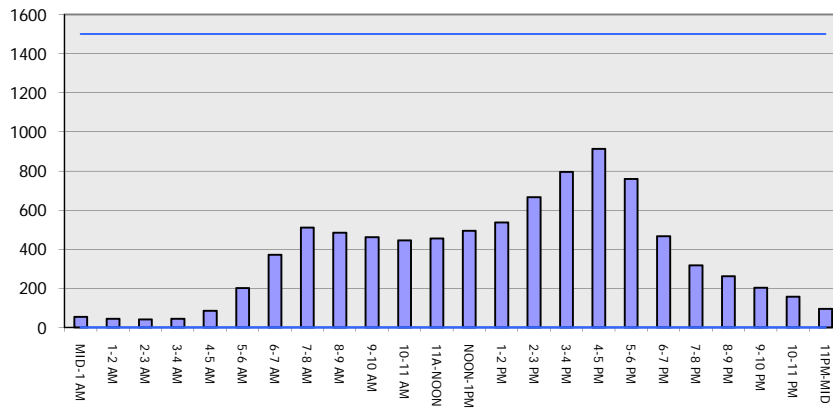
**USH 151: CTH G TO CTH S (DODGE COUNTY)
CONTINUOUS (24 HOUR) CLOSURE
DIVERSION ROUTE: CTH G - CTH S**

MAY
Analyzed for 2009
Construction Season

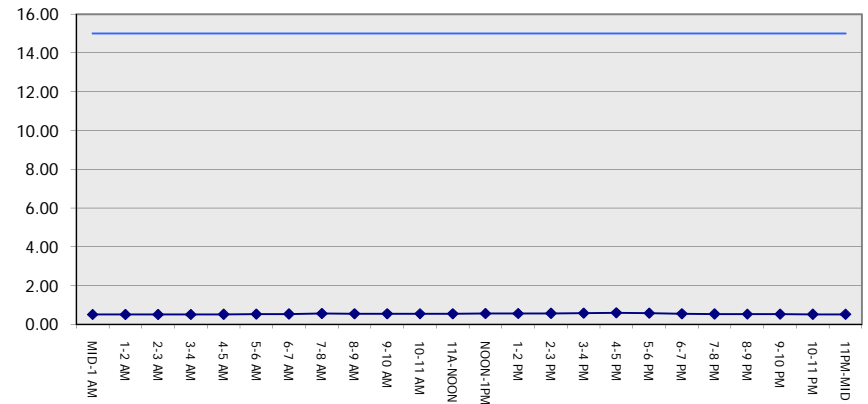
GRAPHICAL REPRESENTATION OF TRAFFIC MODEL INPUT AND OUTPUT

MON-THUR NORTHBOUND DIRECTION

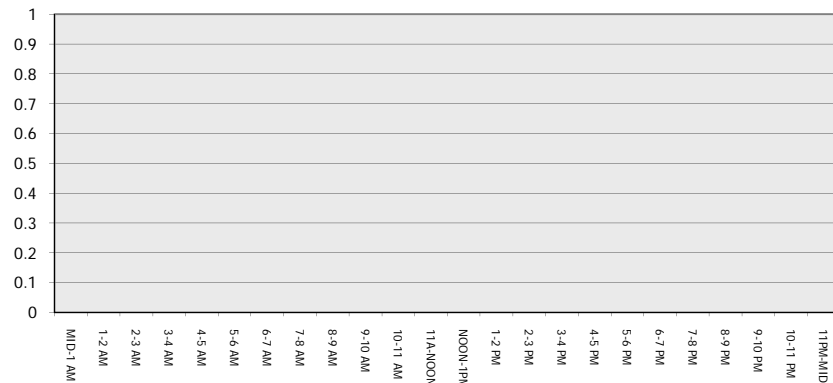
Main Route - Traffic Demand (Vehicles Per Hour)



Main Route Average Delay Per Vehicle (Minutes)



Main Route - Average Queue Length (Vehicles)



Main Route - Average Speed (MPH)

