

USH 151: CTH G TO CTH S (DODGE COUNTY) CONTINUOUS (24 HOUR) CLOSURE DIVERSION ROUTE: CTH G - CTH S	MAY
	Analyzed for 2009 Construction Season

SUMMARY OF TRAFFIC MODEL OUTPUT

FRIDAY SOUTHBOUND DIRECTION

TIME OF DAY	FLOWS AND CAPACITY IN VEH/HR								AVERAGE SPEEDS IN MPH						
	MAIN ROUTE		ALTERNATE ROUTE		SITE CAPA CITY	FLOW MAIN ROUTE	FLOW DIVER -TING	TOTAL DIVN FLOW	AV.DEL PER VEH (MINS)	AVERAGE QUEUE (VEH)	MAIN ROUTE		SITE	ALTERNATE ROUTE	
	DEMAND FLOW	PCT HEAVY	NORMAL FLOW	PCT HEAVY							WITHOUT WORK ZN	WITH WORK ZN		WITHOUT WORK ZN	WITH WORK ZN
MID-1 AM	39	0.0	2	0.0	1500	39	0	2	0.50	0	63.8	59.5	41.9	24.8	24.8
1-2 AM	30	0.0	2	0.0	1500	30	0	2	0.50	0	63.8	59.5	41.9	24.8	24.8
2-3 AM	52	0.0	3	0.0	1500	52	0	3	0.50	0	63.8	59.4	41.8	24.8	24.8
3-4 AM	61	0.0	4	0.0	1500	61	0	4	0.50	0	63.8	59.4	41.8	24.8	24.8
4-5 AM	146	0.0	10	0.0	1500	146	0	10	0.51	0	63.7	59.2	41.5	24.8	24.8
5-6 AM	398	0.0	26	0.0	1500	398	0	26	0.54	0	63.2	58.6	40.6	24.7	24.7
6-7 AM	591	0.0	39	0.0	1500	591	0	39	0.55	0	62.8	58.2	40.0	24.5	24.5
7-8 AM	682	0.0	45	0.0	1500	682	0	45	0.56	0	62.7	57.9	39.7	24.5	24.5
8-9 AM	543	0.0	36	0.0	1500	543	0	36	0.55	0	62.9	58.3	40.2	24.6	24.6
9-10 AM	581	0.0	38	0.0	1500	581	0	38	0.55	0	62.8	58.2	40.1	24.5	24.5
10-11 AM	554	0.0	37	0.0	1500	554	0	37	0.55	0	62.8	58.2	40.1	24.5	24.5
11A-NOON	567	0.0	38	0.0	1500	567	0	38	0.55	0	62.8	58.2	40.1	24.5	24.5
NOON-1PM	596	0.0	39	0.0	1500	596	0	39	0.56	0	62.8	58.2	40.0	24.5	24.5
1-2 PM	708	0.0	46	0.0	1500	708	0	46	0.57	0	62.6	57.9	39.6	24.5	24.5
2-3 PM	716	0.0	48	0.0	1500	716	0	48	0.57	0	62.6	57.9	39.6	24.5	24.5
3-4 PM	808	0.0	53	0.0	1500	808	0	53	0.58	0	62.4	57.7	39.3	24.4	24.4
4-5 PM	856	0.0	56	0.0	1500	856	0	56	0.58	0	62.3	57.6	39.2	24.4	24.4
5-6 PM	815	0.0	54	0.0	1500	815	0	54	0.58	0	62.4	57.6	39.3	24.4	24.4
6-7 PM	629	0.0	41	0.0	1500	629	0	41	0.56	0	62.7	58.1	39.9	24.5	24.5
7-8 PM	467	0.0	30	0.0	1500	467	0	30	0.54	0	63.0	58.4	40.4	24.6	24.6
8-9 PM	334	0.0	22	0.0	1500	334	0	22	0.53	0	63.3	58.7	40.9	24.7	24.7
9-10 PM	257	0.0	17	0.0	1500	257	0	17	0.52	0	63.4	58.9	41.1	24.7	24.7
10-11 PM	163	0.0	11	0.0	1500	163	0	11	0.51	0	63.6	59.2	41.4	24.8	24.8
11PM-MID	84	0.0	5	0.0	1500	84	0	5	0.51	0	63.7	59.4	41.7	24.8	24.8

----- SITE BREAKDOWN DELAYS -----	
BREAKDOWN DURATION (MINS)	0
RANGE OF QUEUE DELAY - MIN (VEH-H) MAX	0.0
RANGE OF DIVN DELAY - MIN (VEH-H) MAX	0.0
AV BREAKDOWNS PER DAY	0.00
AV QUEUE DELAY/DAY (VEH-H)	0.0
AV DIVN DELAY/DAY (VEH-H)	0.0
AV TOTAL DELAY/DAY (VEH-H)	0.0

----- SITE ACCIDENT DELAYS -----	
ACCIDENT DURATION (MINS)	0
RANGE OF QUEUE DELAY - MIN (VEH-H) MAX	0.0
RANGE OF DIVN DELAY - MIN (VEH-H) MAX	0.0
AV ACCIDENTS PER DAY	0.00
AV QUEUE DELAY/DAY (VEH-H)	0.0
AV DIVN DELAY/DAY (VEH-H)	0.0
AV TOTAL DELAY/DAY (VEH-H)	0.0

AVERAGE ACCIDENT NUMBERS (PIA/DAY)	
MAIN ROUTE WITHOUT WORKS	0.0128
MAIN ROUTE WITH WORKS	0.0140
DIVERSION	0.0069

PIA: Personal Injury Accidents

IMPACTS ON ROAD USERS	
ROAD USER COSTS PER DAY (DOLLARS)	\$1,238
CONGESTED HOURS PER DAY*	0

*Delays Exceeding 15 Minutes

USH 151: CTH G TO CTH S (DODGE COUNTY)
CONTINUOUS (24 HOUR) CLOSURE
DIVERSION ROUTE: CTH G - CTH S

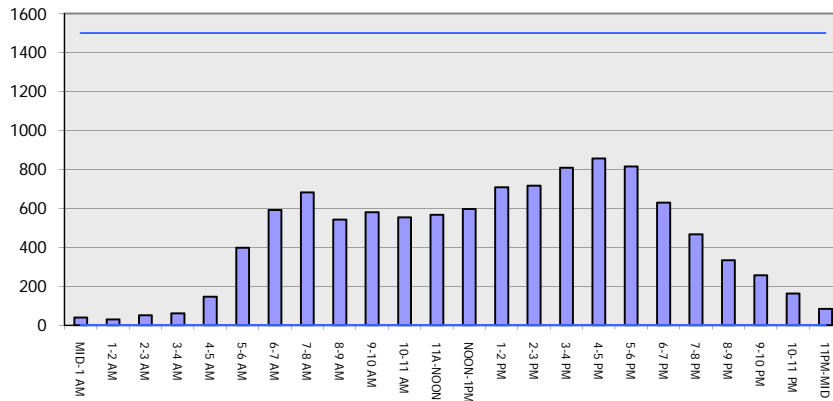
MAY

Analyzed for 2009
 Construction Season

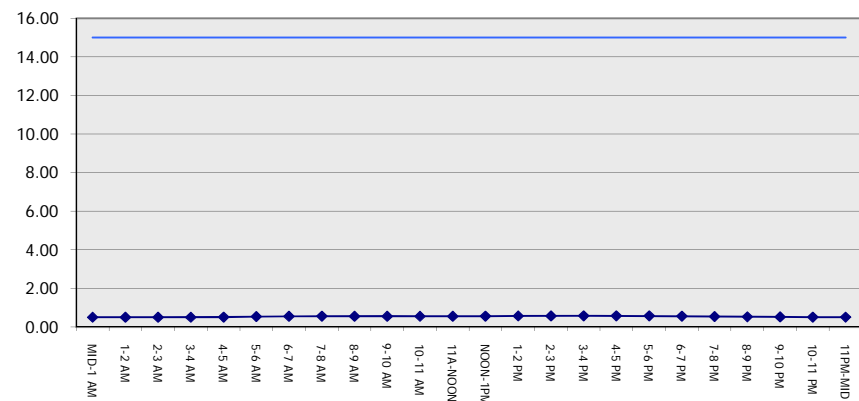
GRAPHICAL REPRESENTATION OF TRAFFIC MODEL INPUT AND OUTPUT

FRIDAY SOUTHBOUND DIRECTION

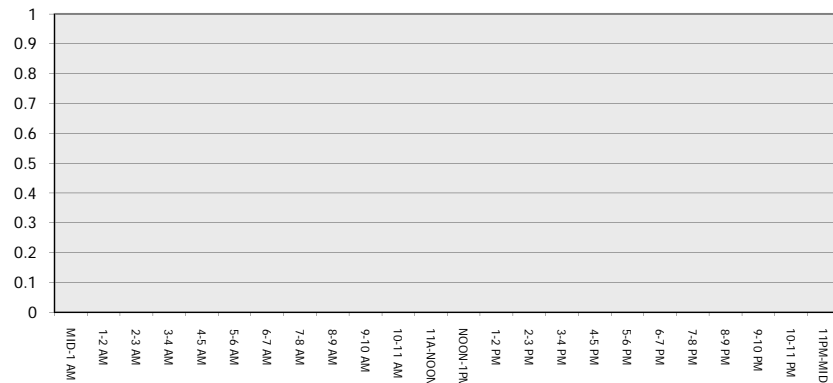
Main Route - Traffic Demand (Vehicles Per Hour)



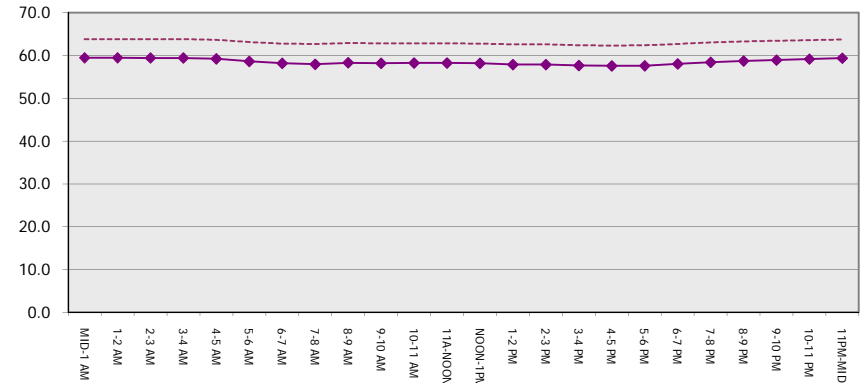
Main Route Average Delay Per Vehicle (Minutes)



Main Route - Average Queue Length (Vehicles)



Main Route - Average Speed (MPH)



USH 151: CTH G TO CTH S (DODGE COUNTY) CONTINUOUS (24 HOUR) CLOSURE DIVERSION ROUTE: CTH G - CTH S	MAY
	Analyzed for 2009 Construction Season

SUMMARY OF TRAFFIC MODEL OUTPUT

FRIDAY NORTHBOUND DIRECTION

TIME OF DAY	FLOWS AND CAPACITY IN VEH/HR								AVERAGE SPEEDS IN MPH						
	MAIN		DIVERSION		SITE CAPA CITY	FLOW MAIN ROUTE	FLOW DIVER -TING	TOTAL DIVN FLOW	AV.DEL PER VEH (MINS)	AVERAGE QUEUE (VEH)	MAIN ROUTE		SITE	ALTERNATE ROUTE	
	DEMAND FLOW	PCT HEAVY	NORMAL FLOW	PCT HEAVY							WITHOUT WORK ZN	WITH WORK ZN		WITHOUT WORK ZN	WITH WORK ZN
MID-1 AM	64	0.0	4	0.0	1500	64	0	4	0.50	0	63.8	59.4	41.8	24.8	24.8
1-2 AM	59	0.0	4	0.0	1500	59	0	4	0.50	0	63.8	59.4	41.8	24.8	24.8
2-3 AM	47	0.0	3	0.0	1500	47	0	3	0.50	0	63.8	59.4	41.9	24.8	24.8
3-4 AM	57	0.0	3	0.0	1500	57	0	3	0.50	0	63.8	59.4	41.8	24.8	24.8
4-5 AM	90	0.0	5	0.0	1500	90	0	5	0.51	0	63.7	59.4	41.7	24.8	24.8
5-6 AM	192	0.0	13	0.0	1500	192	0	13	0.52	0	63.5	59.1	41.4	24.7	24.7
6-7 AM	351	0.0	23	0.0	1500	351	0	23	0.53	0	63.2	58.7	40.8	24.7	24.7
7-8 AM	502	0.0	34	0.0	1500	502	0	34	0.55	0	63.0	58.4	40.3	24.6	24.6
8-9 AM	530	0.0	35	0.0	1500	530	0	35	0.55	0	62.9	58.3	40.2	24.6	24.6
9-10 AM	507	0.0	34	0.0	1500	507	0	34	0.55	0	63.0	58.4	40.2	24.6	24.6
10-11 AM	555	0.0	37	0.0	1500	555	0	37	0.55	0	62.8	58.2	40.1	24.5	24.5
11A-NOON	591	0.0	39	0.0	1500	591	0	39	0.55	0	62.8	58.2	40.0	24.5	24.5
NOON-1PM	663	0.0	43	0.0	1500	663	0	43	0.56	0	62.7	58.0	39.7	24.5	24.5
1-2 PM	768	0.0	51	0.0	1500	768	0	51	0.57	0	62.5	57.8	39.4	24.5	24.5
2-3 PM	936	0.0	62	0.0	1500	936	0	62	0.59	0	62.2	57.4	38.9	24.3	24.3
3-4 PM	1046	0.0	69	0.0	1500	1046	0	69	0.60	0	62.0	57.1	38.6	24.3	24.3
4-5 PM	1131	0.0	75	0.0	1500	1131	0	75	0.62	0	61.8	56.8	37.9	24.3	24.3
5-6 PM	1020	0.0	67	0.0	1500	1020	0	67	0.60	0	62.0	57.2	38.7	24.3	24.3
6-7 PM	723	0.0	48	0.0	1500	723	0	48	0.57	0	62.5	57.9	39.6	24.5	24.5
7-8 PM	497	0.0	32	0.0	1500	497	0	32	0.55	0	63.0	58.4	40.3	24.6	24.6
8-9 PM	350	0.0	23	0.0	1500	350	0	23	0.53	0	63.2	58.7	40.8	24.7	24.7
9-10 PM	283	0.0	18	0.0	1500	283	0	18	0.53	0	63.4	58.9	41.0	24.7	24.7
10-11 PM	212	0.0	14	0.0	1500	212	0	14	0.52	0	63.5	59.1	41.2	24.7	24.7
11PM-MID	147	0.0	10	0.0	1500	147	0	10	0.51	0	63.7	59.2	41.5	24.8	24.8

----- SITE BREAKDOWN DELAYS -----	
BREAKDOWN DURATION (MINS)	0
RANGE OF QUEUE DELAY - MIN	0.0
(VEH-H) MAX	0.0
RANGE OF DIVN DELAY - MIN	0.0
(VEH-H) MAX	0.0
AV BREAKDOWNS PER DAY	0.00
AV QUEUE DELAY/DAY (VEH-H)	0.0
AV DIVN DELAY/DAY (VEH-H)	0.0
AV TOTAL DELAY/DAY (VEH-H)	0.0

----- SITE ACCIDENT DELAYS -----	
ACCIDENT DURATION (MINS)	0
RANGE OF QUEUE DELAY - MIN	0.0
(VEH-H) MAX	0.0
RANGE OF DIVN DELAY - MIN	0.0
(VEH-H) MAX	0.0
AV ACCIDENTS PER DAY	0.00
AV QUEUE DELAY/DAY (VEH-H)	0.0
AV DIVN DELAY/DAY (VEH-H)	0.0
AV TOTAL DELAY/DAY (VEH-H)	0.0

AVERAGE ACCIDENT NUMBERS (PIA/DAY)	
MAIN ROUTE WITHOUT WORKS	0.0136
MAIN ROUTE WITH WORKS	0.0148
DIVERSION	0.0073

PIA: Personal Injury Accidents

IMPACTS ON ROAD USERS	
ROAD USER COSTS PER DAY (DOLLARS)	\$1,339
CONGESTED HOURS PER DAY*	0

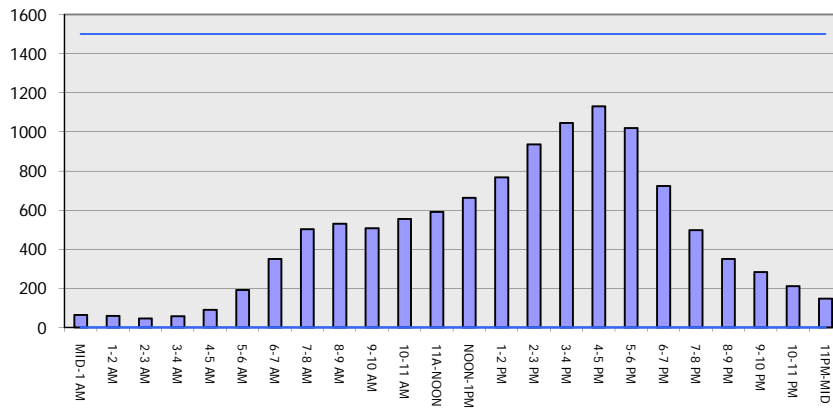
*Delays Exceeding 15 Minutes

**USH 151: CTH G TO CTH S (DODGE COUNTY)
CONTINUOUS (24 HOUR) CLOSURE
DIVERSION ROUTE: CTH G - CTH S**

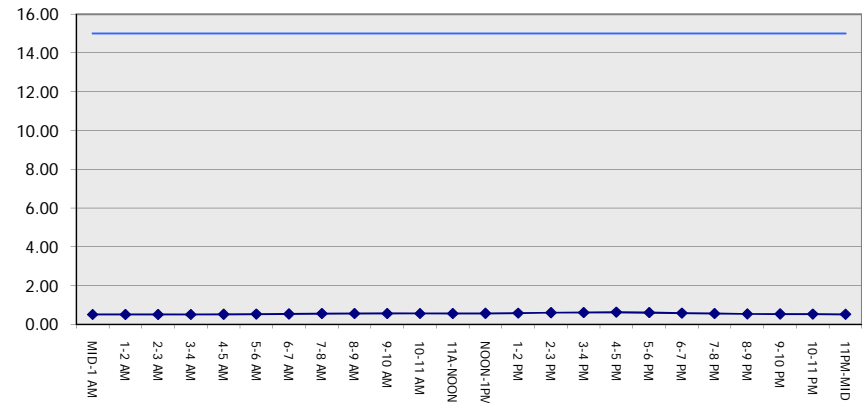
MAY
Analyzed for 2009
Construction Season

GRAPHICAL REPRESENTATION OF TRAFFIC MODEL INPUT AND OUTPUT
FRIDAY NORTHBOUND DIRECTION

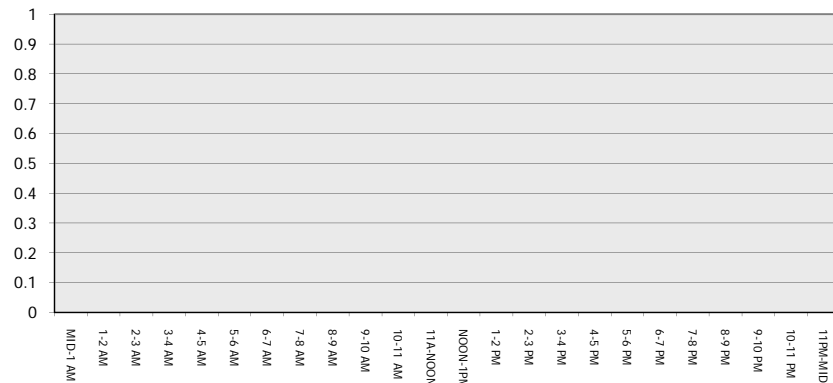
Main Route - Traffic Demand (Vehicles Per Hour)



Main Route Average Delay Per Vehicle (Minutes)



Main Route - Average Queue Length (Vehicles)



Main Route - Average Speed (MPH)

