

<b>USH 12/14: USH 14 TO OLD SAUK RD (DANE)                  CONTINUOUS (24 HOUR) CLOSURE                  NO DIVERSION ROUTE (MAX QUEUE METHOD)</b>	<b>OCTOBER</b>
	Analyzed for 2009 Construction Season

**SUMMARY OF TRAFFIC MODEL OUTPUT**

SUNDAY WESTBOUND DIRECTION

TIME OF DAY	FLOWS AND CAPACITY IN VEH/HR							AVERAGE SPEEDS IN MPH			
	MAIN ROUTE		SITE CAPA CITY	FLOW		AV.DEL PER VEH (MINS)	AVERAGE QUEUE (VEH)	MAIN ROUTE		SITE	
	DEMAND FLOW	PCT HEAVY		MAIN ROUTE	'DIVER TED'			WITHOUT WORK ZONE	WITH WORK ZONE		
MID-1 AM	259	0.0	1500	259	0	0.36	0	60.2	49.1	44.5	
1-2 AM	156	0.0	1500	156	0	0.35	0	60.2	49.4	44.8	
2-3 AM	121	0.0	1500	121	0	0.34	0	60.2	49.6	45.0	
3-4 AM	86	0.0	1500	86	0	0.34	0	60.2	49.6	45.1	
4-5 AM	67	0.0	1500	67	0	0.34	0	60.2	49.7	45.2	
5-6 AM	100	0.0	1500	100	0	0.34	0	60.2	49.6	45.1	
6-7 AM	149	0.0	1500	149	0	0.35	0	60.2	49.4	44.9	
7-8 AM	322	0.0	1500	322	0	0.37	0	60.2	48.9	44.2	
8-9 AM	577	0.0	1500	577	0	0.40	0	60.2	48.1	43.2	
9-10 AM	760	0.0	1500	760	0	0.42	0	60.2	47.6	42.5	
10-11 AM	1135	0.0	1500	1135	0	0.49	0	60.2	46.1	40.6	
11AM-NOON	1352	0.0	1499	1352	0	0.77	0	60.2	40.6	34.2	
NOON-1PM	1522	0.0	1499	1522	0	1.16	5	60.2	34.8	30.8	
1-2 PM	1531	0.0	1500	1531	0	2.45	40	60.2	23.7	30.8	
2-3 PM	1423	0.0	1499	1423	0	1.49	19	60.2	31.1	31.8	
3-4 PM	1477	0.0	1500	1477	0	0.94	0	60.2	37.8	31.2	
4-5 PM	1405	0.0	1500	1405	0	0.85	0	60.2	39.3	32.9	
5-6 PM	1261	0.0	1500	1261	0	0.66	0	60.2	42.7	36.6	
6-7 PM	1063	0.0	1500	1063	0	0.46	0	60.2	46.7	41.5	
7-8 PM	713	0.0	1500	713	0	0.42	0	60.2	47.8	42.7	
8-9 PM	479	0.0	1500	479	0	0.39	0	60.2	48.4	43.6	
9-10 PM	374	0.0	1500	374	0	0.37	0	60.2	48.7	44.0	
10-11 PM	250	0.0	1500	250	0	0.36	0	60.2	49.1	44.5	
11PM-MID	160	0.0	1500	160	0	0.35	0	60.2	49.4	44.8	

*----- SITE BREAKDOWN DELAYS -----*	
BREAKDOWN DURATION (MINS)	0
RANGE OF QUEUE DELAY - MIN (VEH-H) MAX	0.0
AV BREAKDOWNS PER DAY	0.00
AV QUEUE DELAY/DAY (VEH-H)	0.0
AV TOTAL DELAY/DAY (VEH-H)	0.0

*----- SITE ACCIDENT DELAYS -----*	
BREAKDOWN DURATION (MINS)	0
RANGE OF QUEUE DELAY - MIN (VEH-H) MAX	0
AV BREAKDOWNS PER DAY	0
AV QUEUE DELAY/DAY (VEH-H)	0
AV TOTAL DELAY/DAY (VEH-H)	0

AVERAGE ACCIDENT NUMBERS (PIA/DAY)	
MAIN ROUTE WITHOUT WORKS	0.0043
MAIN ROUTE WITH WORKS	0.0031
'DIVERSION'	0.0000
PIA: Personal Injury Accidents	
IMPACTS ON ROAD USERS	
ROAD USER COSTS PER DAY	\$4,209
CONGESTED HOURS PER DAY*	0

\*Delays Exceeding User-Specified Maximum

**USH 12/14: USH 14 TO OLD SAUK RD (DANE)  
CONTINUOUS (24 HOUR) CLOSURE  
NO DIVERSION ROUTE (MAX QUEUE METHOD)**

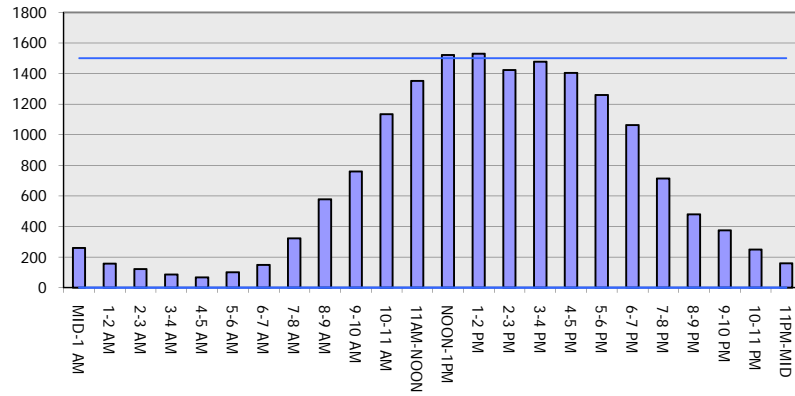
**OCTOBER**

Analyzed for 2009  
Construction Season

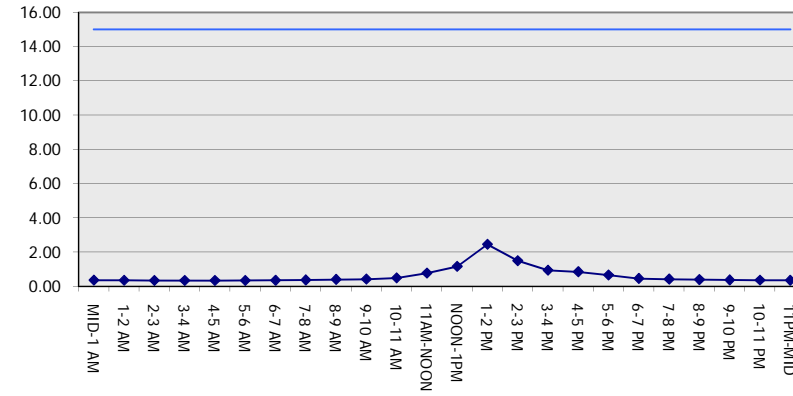
**GRAPHICAL REPRESENTATION OF TRAFFIC MODEL INPUT AND OUTPUT**

**SUNDAY WESTBOUND DIRECTION**

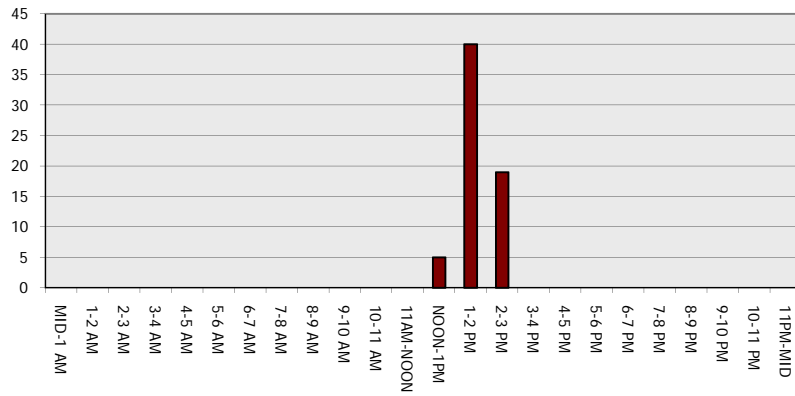
**Main Route - Traffic Demand (Vehicles Per Hour)**



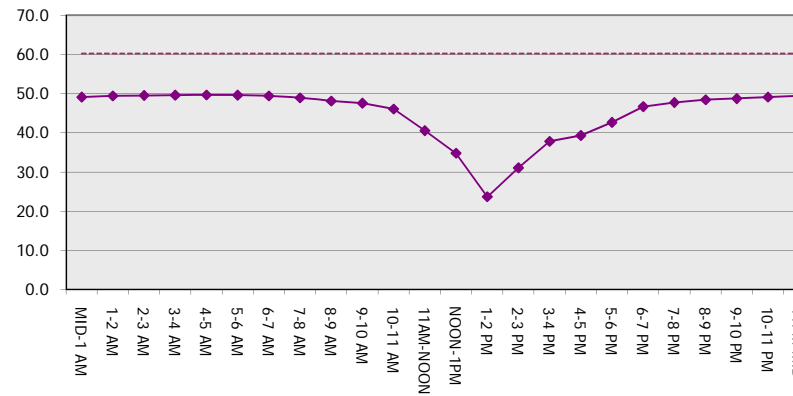
**Main Route Average Delay Per Vehicle (Minutes)**



**Main Route - Average Queue Length (Vehicles)**



**Main Route - Average Speed (MPH)**



<b>USH 12/14: USH 14 TO OLD SAUK RD (DANE)                  CONTINUOUS (24 HOUR) CLOSURE                  NO DIVERSION ROUTE (MAX QUEUE METHOD)</b>	<b>OCTOBER</b>
	Analyzed for 2009 Construction Season

**SUMMARY OF TRAFFIC MODEL OUTPUT**

SUNDAY EASTBOUND DIRECTION

TIME OF DAY	FLOWS AND CAPACITY IN VEH/HR							AVERAGE SPEEDS IN MPH		
	MAIN ROUTE		SITE CAPA CITY	FLOW		AV.DEL PER VEH (MINS)	AVERAGE QUEUE (VEH)	MAIN ROUTE		SITE
	DEMAND FLOW	PCT HEAVY		MAIN ROUTE	'DIVER TED'			WITHOUT WORK ZONE	WITH WORK ZONE	
MID-1 AM	268	0.0	1500	268	0	0.36	0	60.2	49.1	44.4
1-2 AM	179	0.0	1500	179	0	0.35	0	60.2	49.4	44.8
2-3 AM	250	0.0	1500	250	0	0.36	0	60.2	49.1	44.5
3-4 AM	100	0.0	1500	100	0	0.34	0	60.2	49.6	45.1
4-5 AM	65	0.0	1500	65	0	0.34	0	60.2	49.7	45.2
5-6 AM	92	0.0	1500	92	0	0.34	0	60.2	49.6	45.1
6-7 AM	203	0.0	1500	203	0	0.35	0	60.2	49.3	44.6
7-8 AM	338	0.0	1500	338	0	0.37	0	60.2	48.9	44.2
8-9 AM	602	0.0	1500	602	0	0.40	0	60.2	48.1	43.1
9-10 AM	937	0.0	1500	937	0	0.44	0	60.2	47.1	41.9
10-11 AM	1293	0.0	1499	1293	0	0.69	0	60.2	42.0	35.8
11AM-NOON	1623	0.0	1499	1623	0	2.53	50	60.2	23.2	30.8
NOON-1PM	1653	0.0	1499	1653	0	8.12	198	60.2	11.5	30.8
1-2 PM	1680	0.0	1500	1680	0	14.42+	367	60.2	8.7	30.8
2-3 PM	1618	0.0	1499	1481	137	16.98+	433	60.2	8.1	30.8
3-4 PM	1719	0.0	1499	1500	219	17.05+	435	60.2	8.1	30.8
4-5 PM	1669	0.0	1499	1500	169	17.05+	435	60.2	8.1	30.8
5-6 PM	1490	0.0	1500	1464	26	16.73+	426	60.2	8.1	30.8
6-7 PM	1173	0.0	1499	1173	0	9.63	257	60.2	10.8	32.9
7-8 PM	847	0.0	1500	847	0	0.54	4	60.2	45.0	42.2
8-9 PM	541	0.0	1500	541	0	0.40	0	60.2	48.3	43.3
9-10 PM	396	0.0	1500	396	0	0.38	0	60.2	48.7	43.9
10-11 PM	255	0.0	1500	255	0	0.36	0	60.2	49.1	44.5
11PM-MID	155	0.0	1500	155	0	0.35	0	60.2	49.4	44.8

+ INDICATES QUEUEING EXCEEDS USER-SPECIFIED MAXIMUM LIMIT

*----- SITE BREAKDOWN DELAYS -----*	
BREAKDOWN DURATION (MINS)	0
RANGE OF QUEUE DELAY - MIN (VEH-H) MAX	0.0
AV BREAKDOWNS PER DAY	0.00
AV QUEUE DELAY/DAY (VEH-H)	0.0
AV TOTAL DELAY/DAY (VEH-H)	0.0

*----- SITE ACCIDENT DELAYS -----*	
BREAKDOWN DURATION (MINS)	0
RANGE OF QUEUE DELAY - MIN (VEH-H) MAX	0
AV BREAKDOWNS PER DAY	0
AV QUEUE DELAY/DAY (VEH-H)	0
AV TOTAL DELAY/DAY (VEH-H)	0

AVERAGE ACCIDENT NUMBERS (PIA/DAY)	
MAIN ROUTE WITHOUT WORKS	0.0049
MAIN ROUTE WITH WORKS	0.0035
'DIVERSION'	0.0003

PIA: Personal Injury Accidents

ECONOMIC IMPACT ON ROAD USERS	
ROAD USER COSTS PER DAY	\$46,955
CONGESTED HOURS PER DAY*	5

\*Delays Exceeding User-Specified Maximum

**USH 12/14: USH 14 TO OLD SAUK RD (DANE)  
CONTINUOUS (24 HOUR) CLOSURE  
NO DIVERSION ROUTE (MAX QUEUE METHOD)**

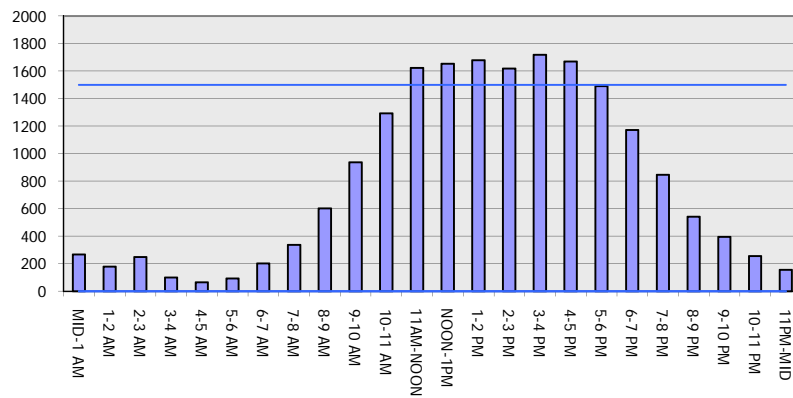
**OCTOBER**

Analyzed for 2009  
Construction Season

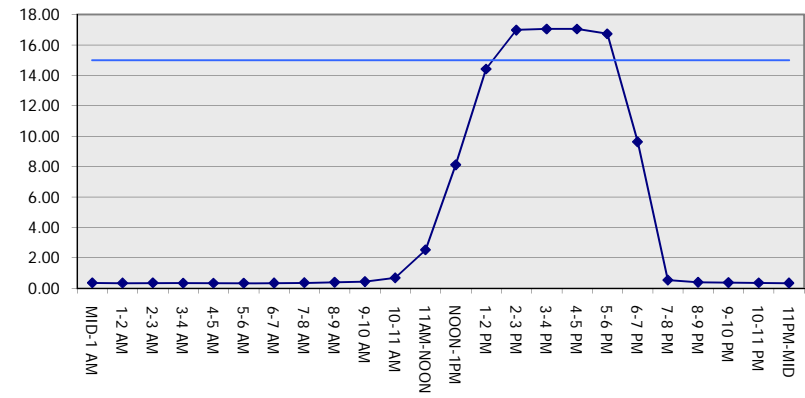
**GRAPHICAL REPRESENTATION OF TRAFFIC MODEL INPUT AND OUTPUT**

**SUNDAY EASTBOUND DIRECTION**

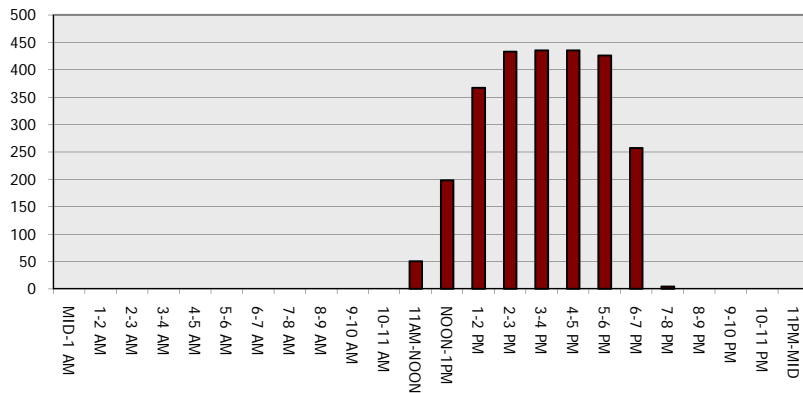
**Main Route - Traffic Demand (Vehicles Per Hour)**



**Main Route Average Delay Per Vehicle (Minutes)**



**Main Route - Average Queue Length (Vehicles)**



**Main Route - Average Speed (MPH)**

