

<b>USH 12/14: USH 14 TO OLD SAUK RD (DANE)                  CONTINUOUS (24 HOUR) CLOSURE                  NO DIVERSION ROUTE (MAX QUEUE METHOD)</b>	<b>AUGUST</b>
	Analyzed for 2009 Construction Season

**SUMMARY OF TRAFFIC MODEL OUTPUT**

MON-THUR WESTBOUND DIRECTION

TIME OF DAY	FLOWS AND CAPACITY IN VEH/HR						AVERAGE SPEEDS IN MPH			
	MAIN ROUTE		SITE CAPA CITY	FLOW		AV.DEL PER VEH (MINS)	AVERAGE QUEUE (VEH)	MAIN ROUTE		SITE
	DEMAND FLOW	PCT HEAVY		MAIN ROUTE	'DIVER TED'			WITHOUT WORK ZONE	WITH WORK ZONE	
MID-1 AM	130	0.0	1500	130	0	0.34	0	60.2	49.5	45.0
1-2 AM	77	0.0	1500	77	0	0.34	0	60.2	49.7	45.2
2-3 AM	65	0.0	1500	65	0	0.34	0	60.2	49.7	45.2
3-4 AM	61	0.0	1500	61	0	0.34	0	60.2	49.7	45.3
4-5 AM	150	0.0	1500	150	0	0.35	0	60.2	49.4	44.9
5-6 AM	425	0.0	1500	425	0	0.38	0	60.2	48.6	43.8
6-7 AM	1154	0.0	1499	1154	0	0.58	0	60.2	44.1	38.3
7-8 AM	1767	0.0	1499	1767	0	4.73	122	60.2	16.2	30.8
8-9 AM	1509	0.0	1499	1509	0	11.62	288	60.2	9.6	30.8
9-10 AM	1237	0.0	1499	1237	0	5.66	151	60.2	14.5	32.5
10-11 AM	1319	0.0	1500	1319	0	0.75	0	60.2	41.0	35.0
11AM-NOON	1532	0.0	1499	1532	0	1.27	9	60.2	33.5	30.9
NOON-1PM	1668	0.0	1500	1668	0	4.97	117	60.2	15.3	30.8
1-2 PM	1667	0.0	1499	1667	0	11.24	281	60.2	9.7	30.8
2-3 PM	1877	0.0	1499	1556	321	16.82+	429	60.2	8.1	30.8
3-4 PM	2275	0.0	1500	1502	773	17.13+	437	60.2	8.1	30.8
4-5 PM	3008	0.0	1500	1526	1481	17.51+	454	55.7	7.9	30.8
5-6 PM	3009	0.0	1500	1495	1514	17.55+	455	55.7	7.9	30.8
6-7 PM	1833	0.0	1500	1495	338	17.06+	436	60.2	8.1	30.8
7-8 PM	1296	0.0	1499	1296	0	14.36+	367	60.2	8.8	30.8
8-9 PM	1087	0.0	1499	1087	0	1.97	81	60.2	27.8	37.9
9-10 PM	816	0.0	1500	816	0	0.43	0	60.2	47.4	42.4
10-11 PM	442	0.0	1500	442	0	0.38	0	60.2	48.6	43.7
11PM-MID	265	0.0	1500	265	0	0.36	0	60.2	49.1	44.4

+ INDICATES QUEUEING EXCEEDS USER-SPECIFIED MAXIMUM LIMIT

*----- SITE BREAKDOWN DELAYS -----*	
BREAKDOWN DURATION (MINS)	0
RANGE OF QUEUE DELAY - MIN	0.0
(VEH-H) MAX	0.0
AV BREAKDOWNS PER DAY	0.00
AV QUEUE DELAY/DAY (VEH-H)	0.0
AV TOTAL DELAY/DAY (VEH-H)	0.0

*----- SITE ACCIDENT DELAYS -----*	
BREAKDOWN DURATION (MINS)	0
RANGE OF QUEUE DELAY - MIN	0
(VEH-H) MAX	0
AV BREAKDOWNS PER DAY	0
AV QUEUE DELAY/DAY (VEH-H)	0
AV TOTAL DELAY/DAY (VEH-H)	0

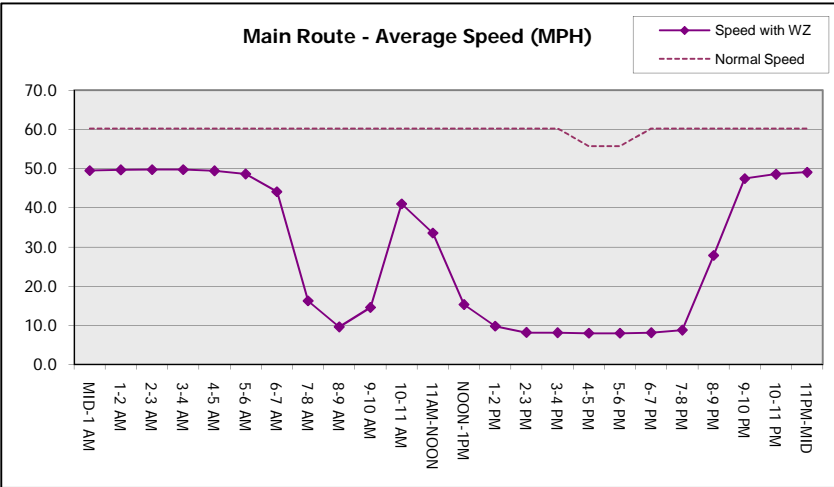
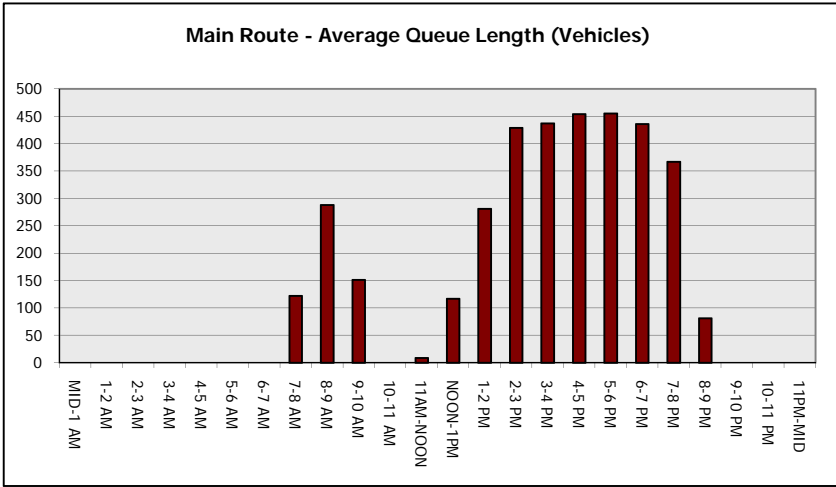
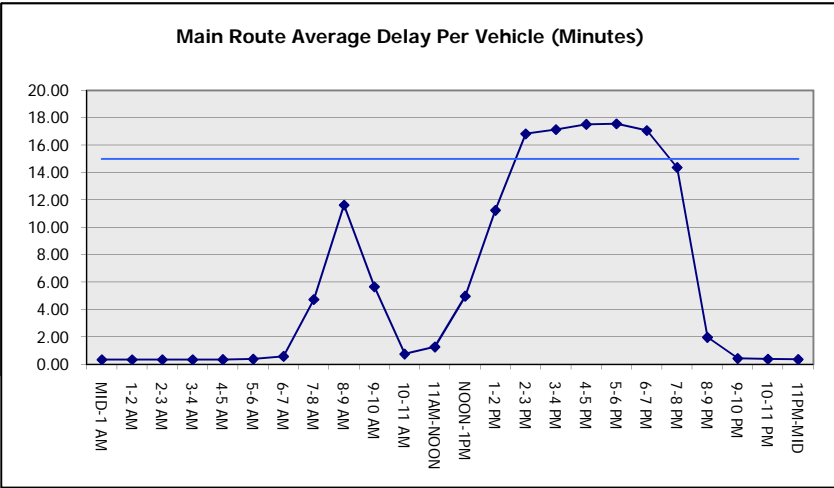
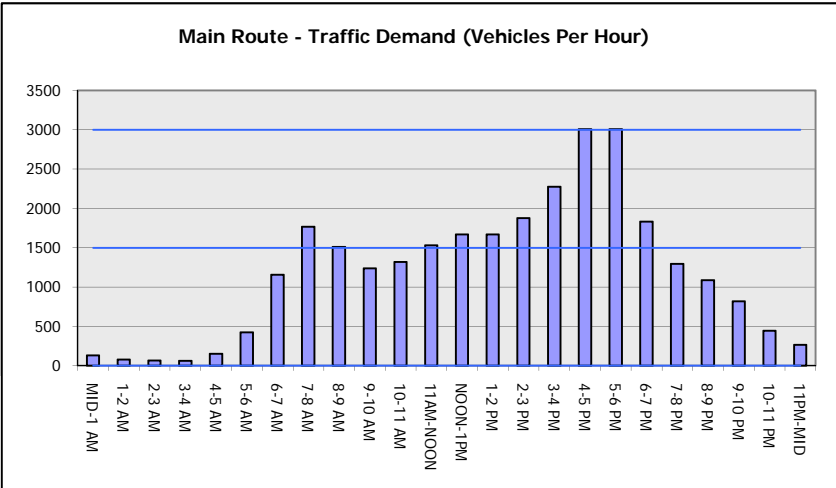
AVERAGE ACCIDENT NUMBERS (PIA/DAY)	
MAIN ROUTE WITHOUT WORKS	0.0073
MAIN ROUTE WITH WORKS	0.0046
'DIVERSION'	0.0026
PIA: Personal Injury Accidents	
IMPACTS ON ROAD USERS	
ROAD USER COSTS PER DAY	\$64,635
CONGESTED HOURS PER DAY*	6

\*Delays Exceeding User-Specified Maximum

**USH 12/14: USH 14 TO OLD SAUK RD (DANE)  
CONTINUOUS (24 HOUR) CLOSURE  
NO DIVERSION ROUTE (MAX QUEUE METHOD)**

**AUGUST**  
Analyzed for 2009  
Construction Season

**GRAPHICAL REPRESENTATION OF TRAFFIC MODEL INPUT AND OUTPUT**  
**MON-THUR WESTBOUND DIRECTION**



<b>USH 12/14: USH 14 TO OLD SAUK RD (DANE)                  CONTINUOUS (24 HOUR) CLOSURE                  NO DIVERSION ROUTE (MAX QUEUE METHOD)</b>	<b>AUGUST</b>
	Analyzed for 2009 Construction Season

**SUMMARY OF TRAFFIC MODEL OUTPUT**

MON-THUR                      EASTBOUND DIRECTION

TIME OF DAY	FLOWS AND CAPACITY IN VEH/HR							AVERAGE SPEEDS IN MPH		
	MAIN ROUTE		SITE CAPA CITY	FLOW		AV.DEL PER VEH (MINS)	AVERAGE QUEUE (VEH)	MAIN ROUTE		SITE
	DEMAND FLOW	PCT HEAVY		MAIN ROUTE	'DIVER TED'			WITHOUT WORK ZONE	WITH WORK ZONE	
MID-1 AM	145	0.0	1500	145	0	0.35	0	60.2	49.4	44.9
1-2 AM	100	0.0	1500	100	0	0.34	0	60.2	49.6	45.1
2-3 AM	67	0.0	1500	67	0	0.34	0	60.2	49.7	45.2
3-4 AM	81	0.0	1500	81	0	0.34	0	60.2	49.7	45.1
4-5 AM	160	0.0	1500	160	0	0.35	0	60.2	49.4	44.8
5-6 AM	604	0.0	1500	604	0	0.40	0	60.2	48.1	43.1
6-7 AM	1657	0.0	1499	1657	0	1.94	54	60.2	27.4	32.2
7-8 AM	2854	0.0	1499	1737	1118	16.51+	427	57.3	8.2	30.8
8-9 AM	2267	0.0	1500	1496	771	17.13+	437	60.2	8.1	30.8
9-10 AM	1548	0.0	1499	1460	88	16.90+	431	60.2	8.1	30.8
10-11 AM	1505	0.0	1500	1505	0	16.17+	411	60.2	8.3	30.8
11AM-NOON	1649	0.0	1499	1506	144	17.03+	435	60.2	8.1	30.8
NOON-1PM	1753	0.0	1500	1503	250	17.06+	435	60.2	8.1	30.8
1-2 PM	1681	0.0	1500	1502	179	17.05+	435	60.2	8.1	30.8
2-3 PM	1709	0.0	1500	1502	207	17.05+	435	60.2	8.1	30.8
3-4 PM	1989	0.0	1500	1502	487	17.09+	436	60.2	8.1	30.8
4-5 PM	2107	0.0	1500	1501	606	17.11+	437	60.2	8.1	30.8
5-6 PM	2044	0.0	1500	1501	543	17.10+	436	60.2	8.1	30.8
6-7 PM	1502	0.0	1500	1446	56	16.49+	420	60.2	8.2	30.8
7-8 PM	1159	0.0	1499	1159	0	8.18	224	60.2	11.8	33.3
8-9 PM	991	0.0	1500	991	0	0.49	1	60.2	46.0	41.7
9-10 PM	736	0.0	1500	736	0	0.42	0	60.2	47.7	42.6
10-11 PM	507	0.0	1500	507	0	0.39	0	60.2	48.4	43.5
11PM-MID	350	0.0	1500	350	0	0.37	0	60.2	48.8	44.1

+ INDICATES QUEUEING EXCEEDS USER-SPECIFIED MAXIMUM LIMIT

*----- SITE BREAKDOWN DELAYS -----*	
BREAKDOWN DURATION (MINS)	0
RANGE OF QUEUE DELAY - MIN (VEH-H) MAX	0.0
AV BREAKDOWNS PER DAY	0.00
AV QUEUE DELAY/DAY (VEH-H)	0.0
AV TOTAL DELAY/DAY (VEH-H)	0.0

*----- SITE ACCIDENT DELAYS -----*	
BREAKDOWN DURATION (MINS)	0
RANGE OF QUEUE DELAY - MIN (VEH-H) MAX	0
AV BREAKDOWNS PER DAY	0
AV QUEUE DELAY/DAY (VEH-H)	0
AV TOTAL DELAY/DAY (VEH-H)	0

AVERAGE ACCIDENT NUMBERS (PIA/DAY)	
MAIN ROUTE WITHOUT WORKS	0.0074
MAIN ROUTE WITH WORKS	0.0046
'DIVERSION'	0.0026

PIA: Personal Injury Accidents

ECONOMIC IMPACT ON ROAD USERS	
ROAD USER COSTS PER DAY	\$87,559
CONGESTED HOURS PER DAY*	12

\*Delays Exceeding User-Specified Maximum

**USH 12/14: USH 14 TO OLD SAUK RD (DANE)  
CONTINUOUS (24 HOUR) CLOSURE  
NO DIVERSION ROUTE (MAX QUEUE METHOD)**

**AUGUST**

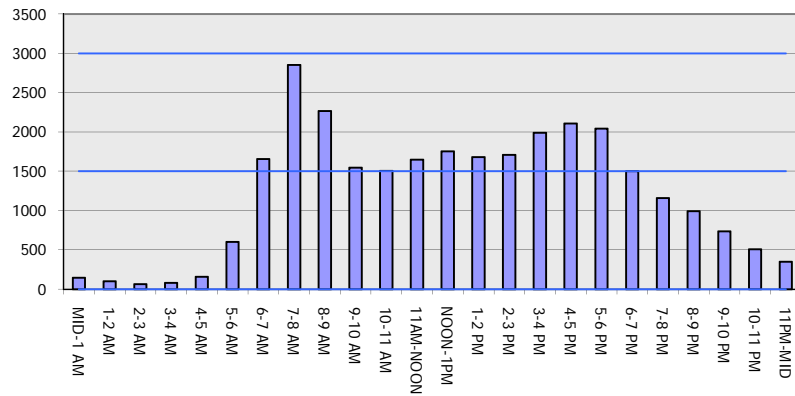
Analyzed for 2009  
Construction Season

**GRAPHICAL REPRESENTATION OF TRAFFIC MODEL INPUT AND OUTPUT**

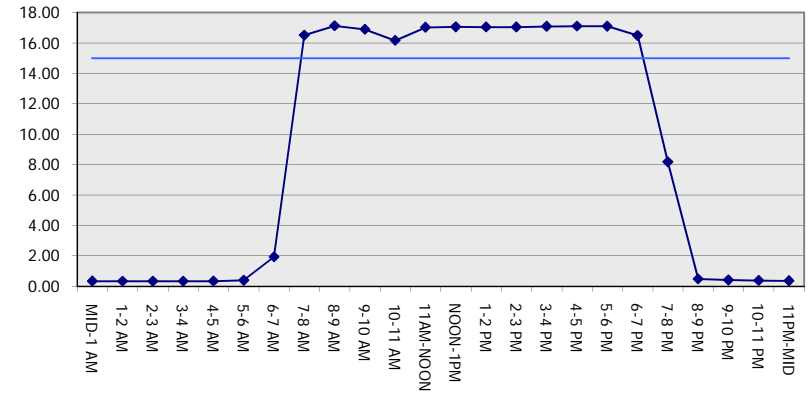
**MON-THUR**

**EASTBOUND DIRECTION**

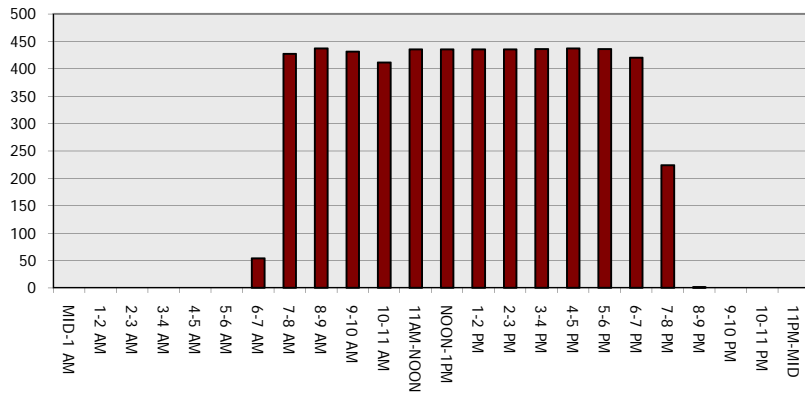
**Main Route - Traffic Demand (Vehicles Per Hour)**



**Main Route Average Delay Per Vehicle (Minutes)**



**Main Route - Average Queue Length (Vehicles)**



**Main Route - Average Speed (MPH)**

