

USH 151: IH 39 TO STH 19 (DANE COUNTY) CONTINUOUS (24 HOUR) 2 LANE CLOSURE NO DIVERSION ROUTE (MAX QUEUE SEGMENT)	OCTOBER
	Analyzed for 2009 Construction Season

SUMMARY OF TRAFFIC MODEL OUTPUT

SUNDAY SOUTHBOUND DIRECTION

TIME OF DAY	FLOWS AND CAPACITY IN VEH/HR						AVERAGE SPEEDS IN MPH			
	MAIN ROUTE		SITE CAPA CITY	FLOW		AV.DEL PER VEH (MINS)	AVERAGE QUEUE (VEH)	MAIN ROUTE		SITE
	DEMAND FLOW	PCT HEAVY		MAIN ROUTE	'DIVER TED'			WITHOUT WORK ZONE	WITH WORK ZONE	
MID-1 AM	202	0.0	1500	202	0	0.50	0	70.2	62.4	44.6
1-2 AM	225	0.0	1500	225	0	0.50	0	70.2	62.4	44.6
2-3 AM	162	0.0	1500	162	0	0.49	0	70.2	62.5	44.8
3-4 AM	205	0.0	1500	205	0	0.50	0	70.2	62.4	44.6
4-5 AM	171	0.0	1500	171	0	0.49	0	70.2	62.5	44.8
5-6 AM	168	0.0	1500	168	0	0.49	0	70.2	62.5	44.8
6-7 AM	204	0.0	1500	204	0	0.50	0	70.2	62.4	44.6
7-8 AM	282	0.0	1500	282	0	0.51	0	70.2	62.3	44.3
8-9 AM	375	0.0	1500	375	0	0.52	0	70.2	62.2	44.0
9-10 AM	541	0.0	1500	541	0	0.54	0	70.0	61.8	43.3
10-11 AM	710	0.0	1500	710	0	0.56	0	69.9	61.4	42.7
11AM-NOON	818	0.0	1500	818	0	0.57	0	69.7	61.1	42.4
NOON-1PM	804	0.0	1500	804	0	0.57	0	69.7	61.2	42.4
1-2 PM	772	0.0	1500	772	0	0.56	0	69.8	61.2	42.5
2-3 PM	739	0.0	1500	739	0	0.56	0	69.8	61.3	42.6
3-4 PM	801	0.0	1500	801	0	0.57	0	69.7	61.2	42.4
4-5 PM	803	0.0	1500	803	0	0.57	0	69.7	61.2	42.4
5-6 PM	776	0.0	1500	776	0	0.56	0	69.7	61.2	42.5
6-7 PM	692	0.0	1500	692	0	0.55	0	69.9	61.4	42.8
7-8 PM	503	0.0	1500	503	0	0.53	0	70.1	61.9	43.5
8-9 PM	533	0.0	1500	533	0	0.54	0	70.0	61.8	43.4
9-10 PM	501	0.0	1500	501	0	0.53	0	70.1	61.9	43.5
10-11 PM	330	0.0	1500	330	0	0.51	0	70.2	62.2	44.2
11PM-MID	298	0.0	1500	298	0	0.51	0	70.2	62.3	44.3

----- SITE BREAKDOWN DELAYS -----

BREAKDOWN DURATION (MINS)	0
RANGE OF QUEUE DELAY - MIN (VEH-H) MAX	0.0
AV BREAKDOWNS PER DAY	0.00
AV QUEUE DELAY/DAY (VEH-H)	0.0
AV TOTAL DELAY/DAY (VEH-H)	0.0

----- SITE ACCIDENT DELAYS -----

BREAKDOWN DURATION (MINS)	0
RANGE OF QUEUE DELAY - MIN (VEH-H) MAX	0
AV BREAKDOWNS PER DAY	0
AV QUEUE DELAY/DAY (VEH-H)	0
AV TOTAL DELAY/DAY (VEH-H)	0

AVERAGE ACCIDENT NUMBERS (PIA/DAY)

MAIN ROUTE WITHOUT WORKS	0.0087
MAIN ROUTE WITH WORKS	0.0079
'DIVERSION'	0.0000

PIA: Personal Injury Accidents

IMPACTS ON ROAD USERS

ROAD USER COSTS PER DAY	\$1,779
CONGESTED HOURS PER DAY*	0

*Delays Exceeding User-Specified Maximum

**USH 151: IH 39 TO STH 19 (DANE COUNTY)
CONTINUOUS (24 HOUR) 2 LANE CLOSURE
NO DIVERSION ROUTE (MAX QUEUE SEGMENT)**

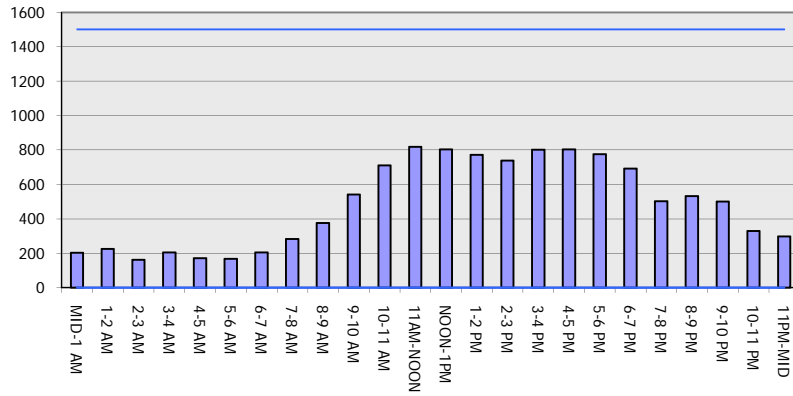
OCTOBER

Analyzed for 2009
Construction Season

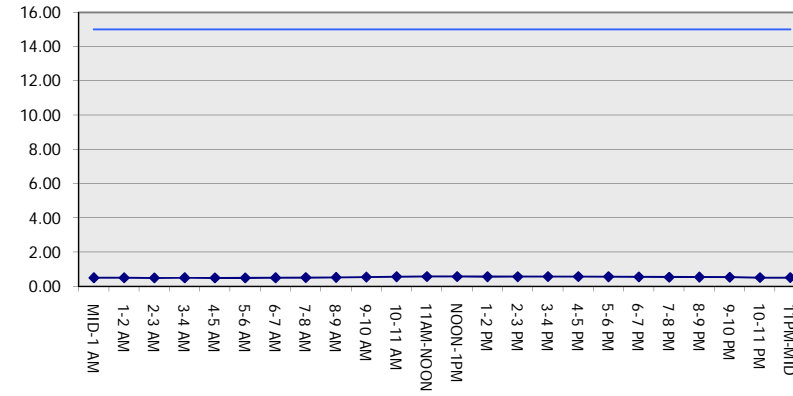
GRAPHICAL REPRESENTATION OF TRAFFIC MODEL INPUT AND OUTPUT

SUNDAY SOUTHBOUND DIRECTION

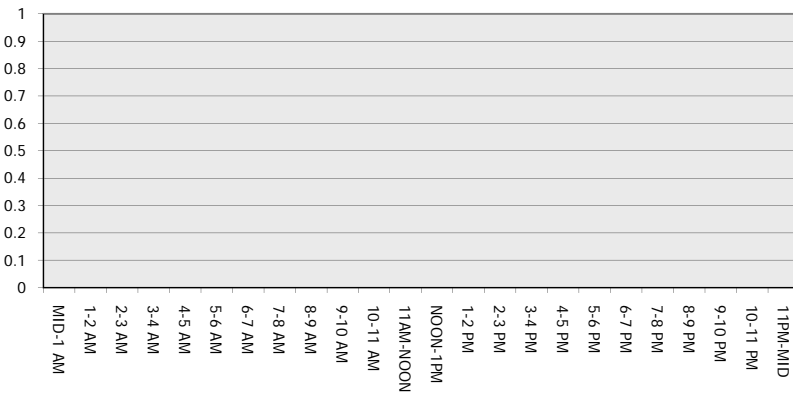
Main Route - Traffic Demand (Vehicles Per Hour)



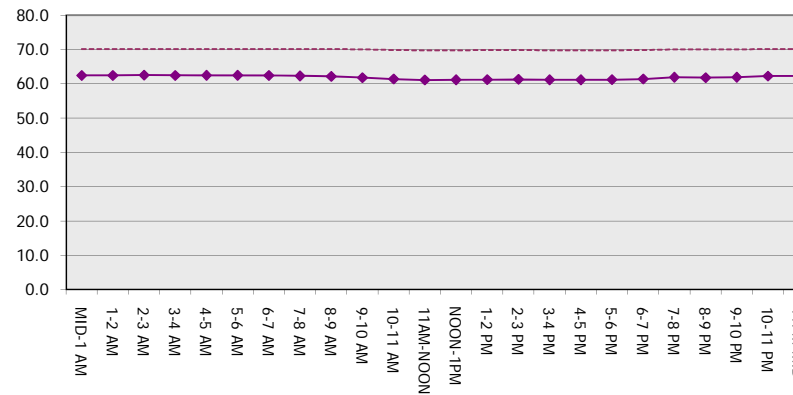
Main Route Average Delay Per Vehicle (Minutes)



Main Route - Average Queue Length (Vehicles)



Main Route - Average Speed (MPH)



USH 151: IH 39 TO STH 19 (DANE COUNTY) CONTINUOUS (24 HOUR) 2 LANE CLOSURE NO DIVERSION ROUTE (MAX QUEUE SEGMENT)	OCTOBER
	Analyzed for 2009 Construction Season

SUMMARY OF TRAFFIC MODEL OUTPUT

SUNDAY NORTHBOUND DIRECTION

TIME OF DAY	FLOWS AND CAPACITY IN VEH/HR						AVERAGE SPEEDS IN MPH			
	MAIN ROUTE		SITE CAPA CITY	FLOW		AV.DEL PER VEH (MINS)	AVERAGE QUEUE (VEH)	MAIN ROUTE		SITE
	DEMAND FLOW	PCT HEAVY		MAIN ROUTE	'DIVER TED'			WITHOUT WORK ZONE	WITH WORK ZONE	
MID-1 AM	395	0.0	1500	395	0	0.52	0	70.2	62.1	43.9
1-2 AM	289	0.0	1500	289	0	0.51	0	70.2	62.3	44.3
2-3 AM	263	0.0	1500	263	0	0.50	0	70.2	62.3	44.4
3-4 AM	172	0.0	1500	172	0	0.49	0	70.2	62.5	44.8
4-5 AM	133	0.0	1500	133	0	0.49	0	70.2	62.5	45.0
5-6 AM	131	0.0	1500	131	0	0.49	0	70.2	62.4	44.6
6-7 AM	214	0.0	1500	214	0	0.52	0	70.2	61.7	43.8
7-8 AM	414	0.0	1500	414	0	0.54	0	70.0	61.1	43.3
8-9 AM	559	0.0	1500	559	0	0.57	0	69.7	61.1	42.3
9-10 AM	831	0.0	1500	831	0	0.69	0	69.2	59.2	38.9
10-11 AM	1185	0.0	1499	1185	0	1.24	5	68.9	52.8	31.4
11AM-NOON	1490	0.0	1499	1490	0	3.41	63	68.7	37.5	30.8
NOON-1PM	1596	0.0	1500	1596	0	7.92	183	68.7	23.4	30.8
1-2 PM	1638	0.0	1500	1638	0	13.67+	333	68.7	15.8	30.8
2-3 PM	1657	0.0	1500	1657	0	16.37+	399	68.7	13.8	30.8
3-4 PM	1612	0.0	1499	1500	112	16.36+	400	68.6	13.8	30.8
4-5 PM	1720	0.0	1500	1500	220	16.37+	400	68.7	13.8	30.8
5-6 PM	1646	0.0	1500	1500	146	15.17+	369	69.0	14.7	30.8
6-7 PM	1413	0.0	1499	1396	17	4.40	138	69.4	33.3	36.1
7-8 PM	1112	0.0	1499	1112	0	0.57	0	69.7	61.1	42.3
8-9 PM	822	0.0	1500	822	0	0.55	0	69.9	61.5	43.0
9-10 PM	642	0.0	1500	642	0	0.53	0	70.2	62.0	43.7
10-11 PM	448	0.0	1500	448	0	0.51	0	70.2	62.3	44.3
11PM-MID	285	0.0	1500	285	0					

+ INDICATES QUEUEING EXCEEDS USER-SPECIFIED MAXIMUM LIMIT

----- SITE BREAKDOWN DELAYS -----	
BREAKDOWN DURATION (MINS)	0
RANGE OF QUEUE DELAY - MIN (VEH-H) MAX	0.0
AV BREAKDOWNS PER DAY	0.00
AV QUEUE DELAY/DAY (VEH-H)	0.0
AV TOTAL DELAY/DAY (VEH-H)	0.0

----- SITE ACCIDENT DELAYS -----	
BREAKDOWN DURATION (MINS)	0
RANGE OF QUEUE DELAY - MIN (VEH-H) MAX	0
AV BREAKDOWNS PER DAY	0
AV QUEUE DELAY/DAY (VEH-H)	0
AV TOTAL DELAY/DAY (VEH-H)	0

AVERAGE ACCIDENT NUMBERS (PIA/DAY)	
MAIN ROUTE WITHOUT WORKS	0.0154
MAIN ROUTE WITH WORKS	0.0137
'DIVERSION'	0.0009

PIA: Personal Injury Accidents

ECONOMIC IMPACT ON ROAD USERS	
ROAD USER COSTS PER DAY	\$43,418
CONGESTED HOURS PER DAY*	5

*Delays Exceeding User-Specified Maximum

**USH 151: IH 39 TO STH 19 (DANE COUNTY)
CONTINUOUS (24 HOUR) 2 LANE CLOSURE
NO DIVERSION ROUTE (MAX QUEUE SEGMENT)**

OCTOBER

Analyzed for 2009
Construction Season

GRAPHICAL REPRESENTATION OF TRAFFIC MODEL INPUT AND OUTPUT
SUNDAY NORTHBOUND DIRECTION

