

USH 151: IH 39 TO STH 19 (DANE COUNTY) CONTINUOUS (24 HOUR) CLOSURE NO DIVERSION ROUTE (MAX QUEUE SEGMENT)	OCTOBER
	Analyzed for 2009 Construction Season

SUMMARY OF TRAFFIC MODEL OUTPUT

SUNDAY SOUTHBOUND DIRECTION

TIME OF DAY	FLOWS AND CAPACITY IN VEH/HR						AVERAGE SPEEDS IN MPH			
	MAIN ROUTE		SITE CAPA CITY	FLOW		AV.DEL PER VEH (MINS)	AVERAGE QUEUE (VEH)	MAIN ROUTE		SITE
	DEMAND FLOW	PCT HEAVY		MAIN ROUTE	'DIVER TED'			WITHOUT WORK ZONE	WITH WORK ZONE	
MID-1 AM	202	0.0	3000	202	0	0.36	0	70.2	64.4	49.7
1-2 AM	225	0.0	3000	225	0	0.36	0	70.2	64.4	49.7
2-3 AM	162	0.0	3000	162	0	0.36	0	70.2	64.4	49.7
3-4 AM	205	0.0	3000	205	0	0.36	0	70.2	64.4	49.7
4-5 AM	171	0.0	3000	171	0	0.36	0	70.2	64.4	49.7
5-6 AM	168	0.0	3000	168	0	0.36	0	70.2	64.4	49.7
6-7 AM	204	0.0	3000	204	0	0.36	0	70.2	64.4	49.7
7-8 AM	282	0.0	3000	282	0	0.36	0	70.2	64.4	49.7
8-9 AM	375	0.0	3000	375	0	0.36	0	70.2	64.4	49.7
9-10 AM	541	0.0	3000	541	0	0.36	0	70.0	64.3	49.7
10-11 AM	710	0.0	3000	710	0	0.36	0	69.9	64.2	49.7
11AM-NOON	818	0.0	3000	818	0	0.35	0	69.7	64.1	49.7
NOON-1PM	804	0.0	3000	804	0	0.35	0	69.7	64.1	49.7
1-2 PM	772	0.0	3000	772	0	0.35	0	69.8	64.1	49.7
2-3 PM	739	0.0	3000	739	0	0.35	0	69.8	64.1	49.7
3-4 PM	801	0.0	3000	801	0	0.35	0	69.7	64.1	49.7
4-5 PM	803	0.0	3000	803	0	0.35	0	69.7	64.1	49.7
5-6 PM	776	0.0	3000	776	0	0.35	0	69.7	64.1	49.7
6-7 PM	692	0.0	3000	692	0	0.36	0	69.9	64.2	49.7
7-8 PM	503	0.0	3000	503	0	0.36	0	70.1	64.3	49.7
8-9 PM	533	0.0	3000	533	0	0.36	0	70.0	64.3	49.7
9-10 PM	501	0.0	3000	501	0	0.36	0	70.1	64.4	49.7
10-11 PM	330	0.0	3000	330	0	0.36	0	70.2	64.4	49.7
11PM-MID	298	0.0	3000	298	0	0.36	0	70.2	64.4	49.7

----- SITE BREAKDOWN DELAYS -----

BREAKDOWN DURATION (MINS)	0
RANGE OF QUEUE DELAY - MIN (VEH-H) MAX	0.0
AV BREAKDOWNS PER DAY	0.00
AV QUEUE DELAY/DAY (VEH-H)	0.0
AV TOTAL DELAY/DAY (VEH-H)	0.0

----- SITE ACCIDENT DELAYS -----

BREAKDOWN DURATION (MINS)	0
RANGE OF QUEUE DELAY - MIN (VEH-H) MAX	0
AV BREAKDOWNS PER DAY	0
AV QUEUE DELAY/DAY (VEH-H)	0
AV TOTAL DELAY/DAY (VEH-H)	0

AVERAGE ACCIDENT NUMBERS (PIA/DAY)

MAIN ROUTE WITHOUT WORKS	0.0087
MAIN ROUTE WITH WORKS	0.0079
'DIVERSION'	0.0000

PIA: Personal Injury Accidents

IMPACTS ON ROAD USERS

ROAD USER COSTS PER DAY	\$1,014
CONGESTED HOURS PER DAY*	0

*Delays Exceeding User-Specified Maximum

**USH 151: IH 39 TO STH 19 (DANE COUNTY)
CONTINUOUS (24 HOUR) CLOSURE
NO DIVERSION ROUTE (MAX QUEUE SEGMENT)**

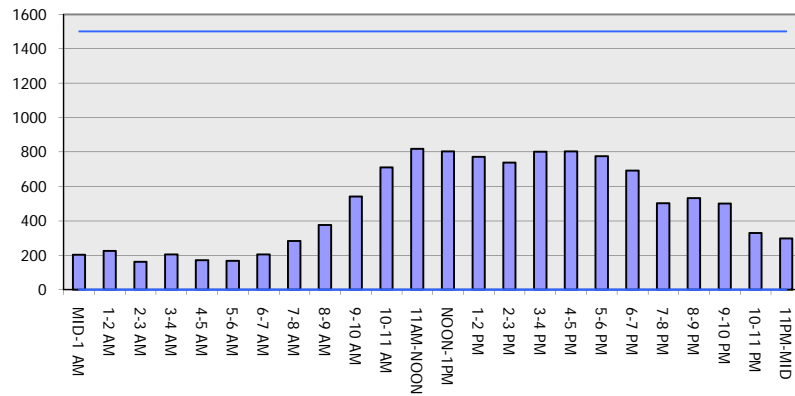
OCTOBER

Analyzed for 2009
Construction Season

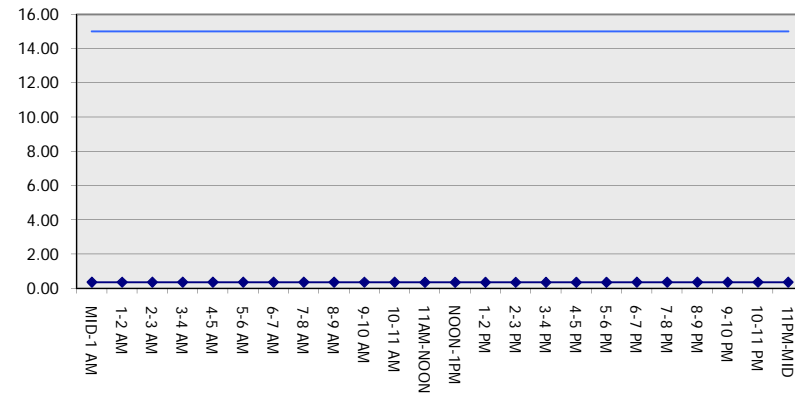
GRAPHICAL REPRESENTATION OF TRAFFIC MODEL INPUT AND OUTPUT

SUNDAY SOUTHBOUND DIRECTION

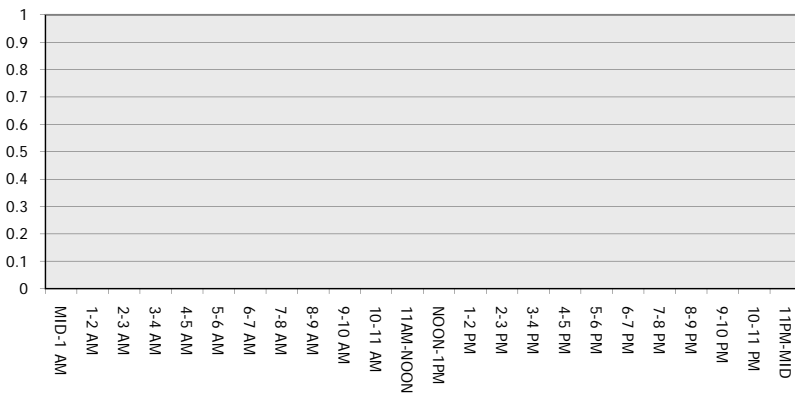
Main Route - Traffic Demand (Vehicles Per Hour)



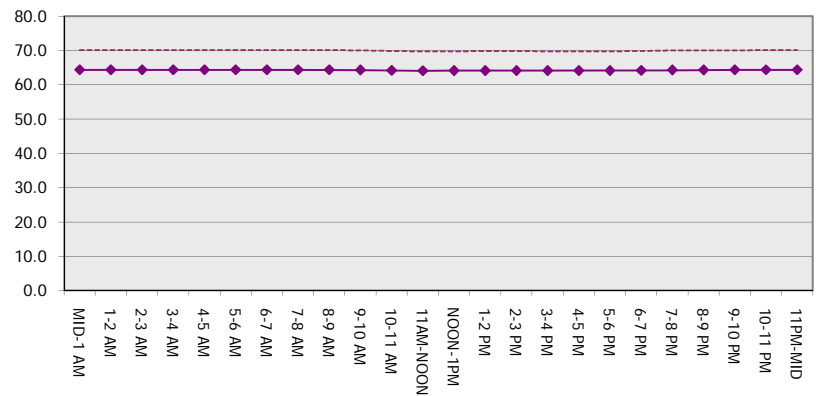
Main Route Average Delay Per Vehicle (Minutes)



Main Route - Average Queue Length (Vehicles)



Main Route - Average Speed (MPH)



USH 151: IH 39 TO STH 19 (DANE COUNTY) CONTINUOUS (24 HOUR) CLOSURE NO DIVERSION ROUTE (MAX QUEUE SEGMENT)	OCTOBER
	Analyzed for 2009 Construction Season

SUMMARY OF TRAFFIC MODEL OUTPUT

SUNDAY NORTHBOUND DIRECTION

TIME OF DAY	FLOWS AND CAPACITY IN VEH/HR							AVERAGE SPEEDS IN MPH		
	MAIN ROUTE		SITE CAPA CITY	FLOW		AV.DEL PER VEH (MINS)	AVERAGE QUEUE (VEH)	MAIN ROUTE		SITE
	DEMAND FLOW	PCT HEAVY		MAIN ROUTE	'DIVER TED'			WITHOUT WORK ZONE	WITH WORK ZONE	
MID-1 AM	395	0.0	3000	395	0	0.36	0	70.2	64.4	49.7
1-2 AM	289	0.0	3000	289	0	0.36	0	70.2	64.4	49.7
2-3 AM	263	0.0	3000	263	0	0.36	0	70.2	64.4	49.7
3-4 AM	172	0.0	3000	172	0	0.36	0	70.2	64.4	49.7
4-5 AM	133	0.0	3000	133	0	0.36	0	70.2	64.4	49.7
5-6 AM	131	0.0	3000	131	0	0.36	0	70.2	64.4	49.7
6-7 AM	214	0.0	3000	214	0	0.36	0	70.2	64.4	49.7
7-8 AM	414	0.0	3000	414	0	0.36	0	70.2	64.4	49.7
8-9 AM	559	0.0	3000	559	0	0.36	0	70.0	64.3	49.7
9-10 AM	831	0.0	3000	831	0	0.35	0	69.7	64.1	49.7
10-11 AM	1185	0.0	3000	1185	0	0.35	0	69.2	63.8	49.7
11AM-NOON	1490	0.0	3000	1490	0	0.34	0	68.9	63.5	49.7
NOON-1PM	1596	0.0	3000	1596	0	0.34	0	68.7	63.5	49.7
1-2 PM	1638	0.0	3000	1638	0	0.34	0	68.7	63.4	49.7
2-3 PM	1657	0.0	3000	1657	0	0.34	0	68.7	63.4	49.7
3-4 PM	1612	0.0	3000	1612	0	0.34	0	68.7	63.5	49.7
4-5 PM	1720	0.0	3000	1720	0	0.34	0	68.6	63.3	49.7
5-6 PM	1646	0.0	3000	1646	0	0.34	0	68.7	63.4	49.7
6-7 PM	1413	0.0	3000	1413	0	0.34	0	69.0	63.6	49.7
7-8 PM	1112	0.0	3000	1112	0	0.35	0	69.4	63.8	49.7
8-9 PM	822	0.0	3000	822	0	0.35	0	69.7	64.1	49.7
9-10 PM	642	0.0	3000	642	0	0.36	0	69.9	64.3	49.7
10-11 PM	448	0.0	3000	448	0	0.36	0	70.2	64.4	49.7
11PM-MID	285	0.0	3000	285	0	0.36	0	70.2	64.4	49.7

----- SITE BREAKDOWN DELAYS -----	
BREAKDOWN DURATION (MINS)	0
RANGE OF QUEUE DELAY - MIN (VEH-H) MAX	0.0
AV BREAKDOWNS PER DAY	0.00
AV QUEUE DELAY/DAY (VEH-H)	0.0
AV TOTAL DELAY/DAY (VEH-H)	0.0

----- SITE ACCIDENT DELAYS -----	
BREAKDOWN DURATION (MINS)	0
RANGE OF QUEUE DELAY - MIN (VEH-H) MAX	0
AV BREAKDOWNS PER DAY	0
AV QUEUE DELAY/DAY (VEH-H)	0
AV TOTAL DELAY/DAY (VEH-H)	0

AVERAGE ACCIDENT NUMBERS (PIA/DAY)	
MAIN ROUTE WITHOUT WORKS	0.0154
MAIN ROUTE WITH WORKS	0.0141
'DIVERSION'	0.0000

PIA: Personal Injury Accidents

ECONOMIC IMPACT ON ROAD USERS	
ROAD USER COSTS PER DAY	\$1,755
CONGESTED HOURS PER DAY*	0

*Delays Exceeding User-Specified Maximum

**USH 151: IH 39 TO STH 19 (DANE COUNTY)
CONTINUOUS (24 HOUR) CLOSURE
NO DIVERSION ROUTE (MAX QUEUE SEGMENT)**

OCTOBER

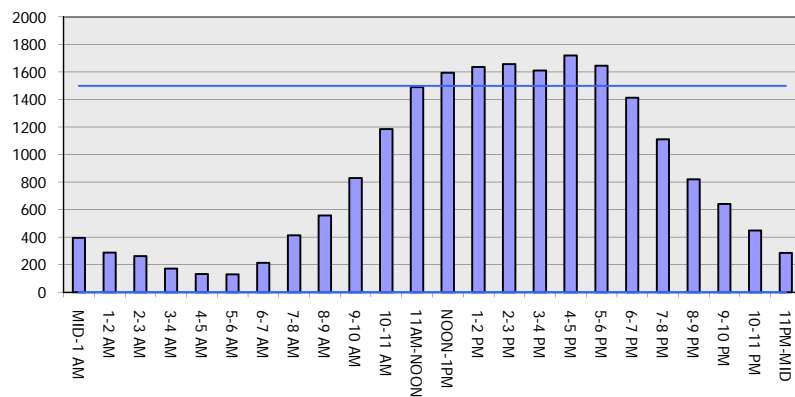
Analyzed for 2009
Construction Season

GRAPHICAL REPRESENTATION OF TRAFFIC MODEL INPUT AND OUTPUT

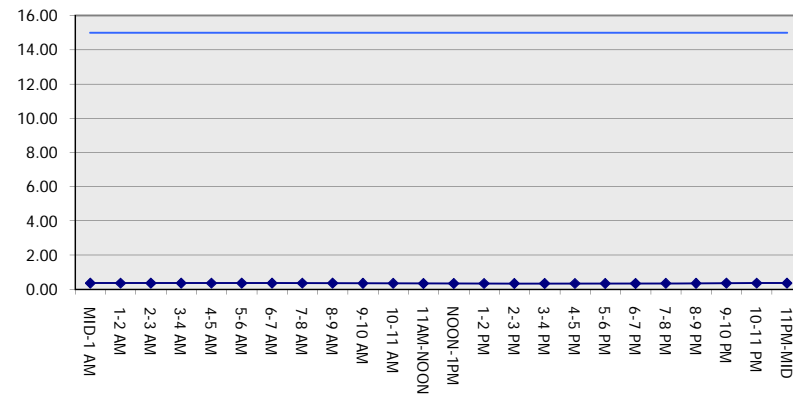
SUNDAY

NORTHBOUND DIRECTION

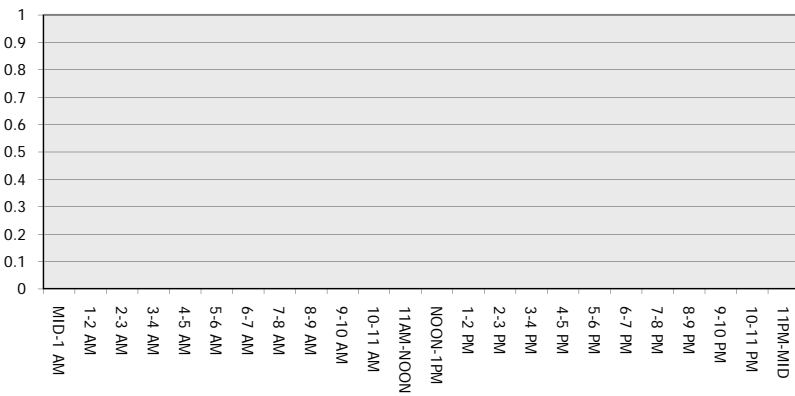
Main Route - Traffic Demand (Vehicles Per Hour)



Main Route Average Delay Per Vehicle (Minutes)



Main Route - Average Queue Length (Vehicles)



Main Route - Average Speed (MPH)

