

<b>USH 151: IH 39 TO STH 19 (DANE COUNTY)                  CONTINUOUS (24 HOUR) CLOSURE                  NO DIVERSION ROUTE (MAX QUEUE SEGMENT)</b>	<b>OCTOBER</b>
	Analyzed for 2009 Construction Season

**SUMMARY OF TRAFFIC MODEL OUTPUT**

SATURDAY SOUTHBOUND DIRECTION

TIME OF DAY	FLOWS AND CAPACITY IN VEH/HR						AVERAGE SPEEDS IN MPH			
	MAIN ROUTE		SITE CAPA CITY	FLOW		AV.DEL PER VEH (MINS)	AVERAGE QUEUE (VEH)	MAIN ROUTE		SITE
	DEMAND FLOW	PCT HEAVY		MAIN ROUTE	'DIVER TED'			WITHOUT WORK ZONE	WITH WORK ZONE	
MID-1 AM	249	0.0	3000	249	0	0.36	0	70.2	64.4	49.7
1-2 AM	209	0.0	3000	209	0	0.36	0	70.2	64.4	49.7
2-3 AM	234	0.0	3000	234	0	0.36	0	70.2	64.4	49.7
3-4 AM	194	0.0	3000	194	0	0.36	0	70.2	64.4	49.7
4-5 AM	234	0.0	3000	234	0	0.36	0	70.2	64.4	49.7
5-6 AM	275	0.0	3000	275	0	0.36	0	70.2	64.4	49.7
6-7 AM	358	0.0	3000	358	0	0.36	0	70.2	64.4	49.7
7-8 AM	615	0.0	3000	615	0	0.36	0	70.0	64.3	49.7
8-9 AM	798	0.0	3000	798	0	0.35	0	69.7	64.1	49.7
9-10 AM	1181	0.0	3000	1181	0	0.35	0	69.2	63.8	49.7
10-11 AM	1466	0.0	3000	1466	0	0.34	0	68.9	63.6	49.7
11AM-NOON	1443	0.0	3000	1443	0	0.34	0	68.9	63.6	49.7
NOON-1PM	1280	0.0	3000	1280	0	0.35	0	69.1	63.7	49.7
1-2 PM	1164	0.0	3000	1164	0	0.35	0	69.3	63.8	49.7
2-3 PM	1002	0.0	3000	1002	0	0.35	0	69.5	64.0	49.7
3-4 PM	945	0.0	3000	945	0	0.35	0	69.6	64.0	49.7
4-5 PM	929	0.0	3000	929	0	0.35	0	69.6	64.0	49.7
5-6 PM	877	0.0	3000	877	0	0.35	0	69.6	64.1	49.7
6-7 PM	947	0.0	3000	947	0	0.35	0	69.6	64.0	49.7
7-8 PM	705	0.0	3000	705	0	0.36	0	69.9	64.2	49.7
8-9 PM	594	0.0	3000	594	0	0.36	0	70.0	64.3	49.7
9-10 PM	554	0.0	3000	554	0	0.36	0	70.0	64.3	49.7
10-11 PM	467	0.0	3000	467	0	0.36	0	70.2	64.4	49.7
11PM-MID	311	0.0	3000	311	0	0.36	0	70.2	64.4	49.7

*----- SITE BREAKDOWN DELAYS -----*	
BREAKDOWN DURATION (MINS)	0
RANGE OF QUEUE DELAY - MIN (VEH-H) MAX	0.0
AV BREAKDOWNS PER DAY	0.00
AV QUEUE DELAY/DAY (VEH-H)	0.0
AV TOTAL DELAY/DAY (VEH-H)	0.0

*----- SITE ACCIDENT DELAYS -----*	
BREAKDOWN DURATION (MINS)	0
RANGE OF QUEUE DELAY - MIN (VEH-H) MAX	0
AV BREAKDOWNS PER DAY	0
AV QUEUE DELAY/DAY (VEH-H)	0
AV TOTAL DELAY/DAY (VEH-H)	0

AVERAGE ACCIDENT NUMBERS (PIA/DAY)	
MAIN ROUTE WITHOUT WORKS	0.0127
MAIN ROUTE WITH WORKS	0.0116
'DIVERSION'	0.0000
PIA: Personal Injury Accidents	
IMPACTS ON ROAD USERS	
ROAD USER COSTS PER DAY	\$1,457
CONGESTED HOURS PER DAY*	0

\*Delays Exceeding User-Specified Maximum

**USH 151: IH 39 TO STH 19 (DANE COUNTY)  
CONTINUOUS (24 HOUR) CLOSURE  
NO DIVERSION ROUTE (MAX QUEUE SEGMENT)**

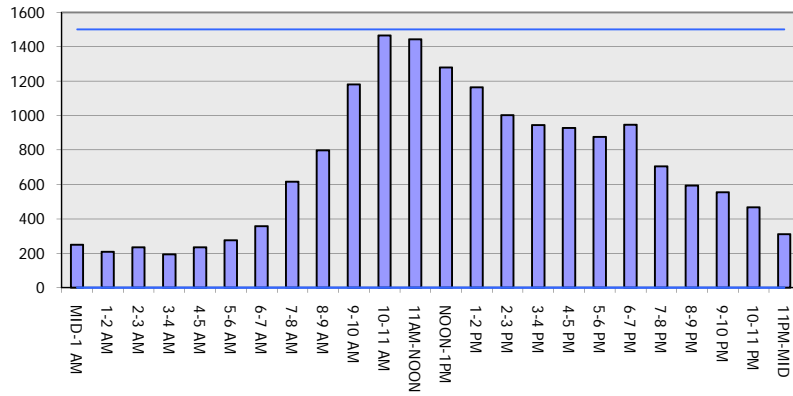
**OCTOBER**

Analyzed for 2009  
Construction Season

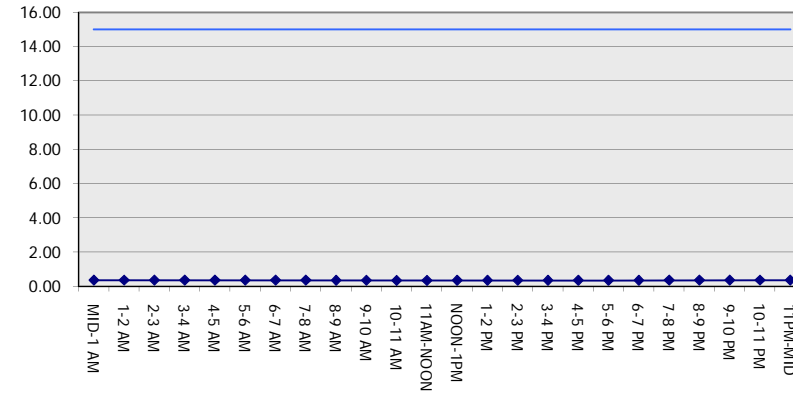
**GRAPHICAL REPRESENTATION OF TRAFFIC MODEL INPUT AND OUTPUT**

**SATURDAY SOUTHBOUND DIRECTION**

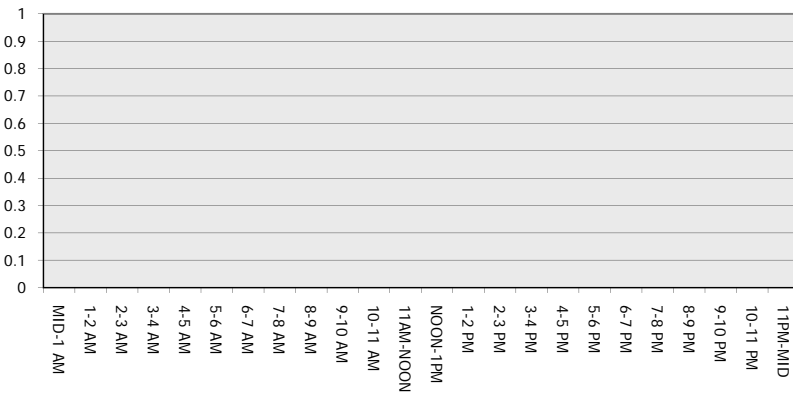
**Main Route - Traffic Demand (Vehicles Per Hour)**



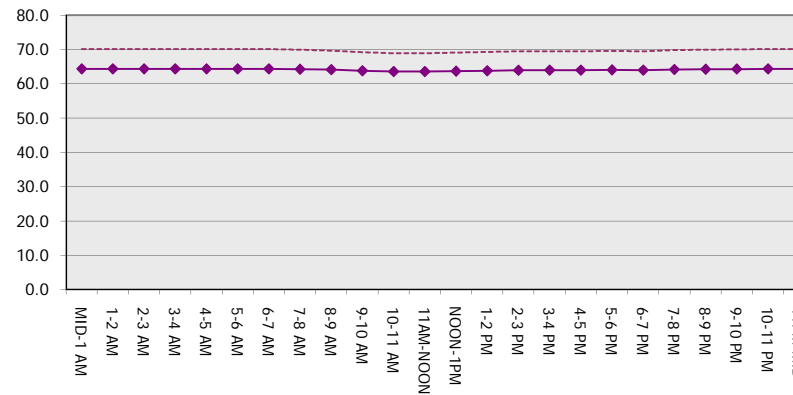
**Main Route Average Delay Per Vehicle (Minutes)**



**Main Route - Average Queue Length (Vehicles)**



**Main Route - Average Speed (MPH)**



<b>USH 151: IH 39 TO STH 19 (DANE COUNTY)                  CONTINUOUS (24 HOUR) CLOSURE                  NO DIVERSION ROUTE (MAX QUEUE SEGMENT)</b>	<b>OCTOBER</b>
	Analyzed for 2009 Construction Season

**SUMMARY OF TRAFFIC MODEL OUTPUT**

SATURDAY NORTHBOUND DIRECTION

TIME OF DAY	FLOWS AND CAPACITY IN VEH/HR							AVERAGE SPEEDS IN MPH		
	MAIN ROUTE		SITE CAPA CITY	FLOW		AV.DEL PER VEH (MINS)	AVERAGE QUEUE (VEH)	MAIN ROUTE		SITE
	DEMAND FLOW	PCT HEAVY		MAIN ROUTE	'DIVER TED'			WITHOUT WORK ZONE	WITH WORK ZONE	
MID-1 AM	359	0.0	3000	359	0	0.36	0	70.2	64.4	49.7
1-2 AM	238	0.0	3000	238	0	0.36	0	70.2	64.4	49.7
2-3 AM	224	0.0	3000	224	0	0.36	0	70.2	64.4	49.7
3-4 AM	137	0.0	3000	137	0	0.36	0	70.2	64.4	49.7
4-5 AM	107	0.0	3000	107	0	0.36	0	70.2	64.4	49.7
5-6 AM	157	0.0	3000	157	0	0.36	0	70.2	64.4	49.7
6-7 AM	268	0.0	3000	268	0	0.36	0	70.2	64.4	49.7
7-8 AM	501	0.0	3000	501	0	0.36	0	70.1	64.4	49.7
8-9 AM	720	0.0	3000	720	0	0.36	0	69.9	64.2	49.7
9-10 AM	1003	0.0	3000	1003	0	0.35	0	69.5	64.0	49.7
10-11 AM	1343	0.0	3000	1343	0	0.35	0	69.1	63.7	49.7
11AM-NOON	1628	0.0	3000	1628	0	0.34	0	68.7	63.5	49.7
NOON-1PM	1742	0.0	3000	1742	0	0.34	0	68.6	63.3	49.7
1-2 PM	1715	0.0	3000	1715	0	0.34	0	68.6	63.3	49.7
2-3 PM	1870	0.0	3000	1870	0	0.34	0	68.4	63.2	49.7
3-4 PM	2070	0.0	3000	2070	0	0.33	0	68.2	63.1	49.7
4-5 PM	2157	0.0	3000	2157	0	0.33	0	68.1	63.0	49.7
5-6 PM	1973	0.0	3000	1973	0	0.34	0	68.3	63.2	49.7
6-7 PM	1640	0.0	3000	1640	0	0.34	0	68.7	63.4	49.7
7-8 PM	1361	0.0	3000	1361	0	0.34	0	69.1	63.7	49.7
8-9 PM	1238	0.0	3000	1238	0	0.35	0	69.2	63.8	49.7
9-10 PM	1086	0.0	3000	1086	0	0.35	0	69.4	63.9	49.7
10-11 PM	781	0.0	3000	781	0	0.35	0	69.7	64.1	49.7
11PM-MID	600	0.0	3000	600	0	0.36	0	70.0	64.3	49.7

*----- SITE BREAKDOWN DELAYS -----*	
BREAKDOWN DURATION (MINS)	0
RANGE OF QUEUE DELAY - MIN (VEH-H) MAX	0.0
AV BREAKDOWNS PER DAY	0.00
AV QUEUE DELAY/DAY (VEH-H)	0.0
AV TOTAL DELAY/DAY (VEH-H)	0.0

*----- SITE ACCIDENT DELAYS -----*	
BREAKDOWN DURATION (MINS)	0
RANGE OF QUEUE DELAY - MIN (VEH-H) MAX	0
AV BREAKDOWNS PER DAY	0
AV QUEUE DELAY/DAY (VEH-H)	0
AV TOTAL DELAY/DAY (VEH-H)	0

AVERAGE ACCIDENT NUMBERS (PIA/DAY)	
MAIN ROUTE WITHOUT WORKS	0.0186
MAIN ROUTE WITH WORKS	0.0170
'DIVERSION'	0.0000

PIA: Personal Injury Accidents

ECONOMIC IMPACT ON ROAD USERS	
ROAD USER COSTS PER DAY	\$2,083
CONGESTED HOURS PER DAY*	0

\*Delays Exceeding User-Specified Maximum

**USH 151: IH 39 TO STH 19 (DANE COUNTY)  
CONTINUOUS (24 HOUR) CLOSURE  
NO DIVERSION ROUTE (MAX QUEUE SEGMENT)**

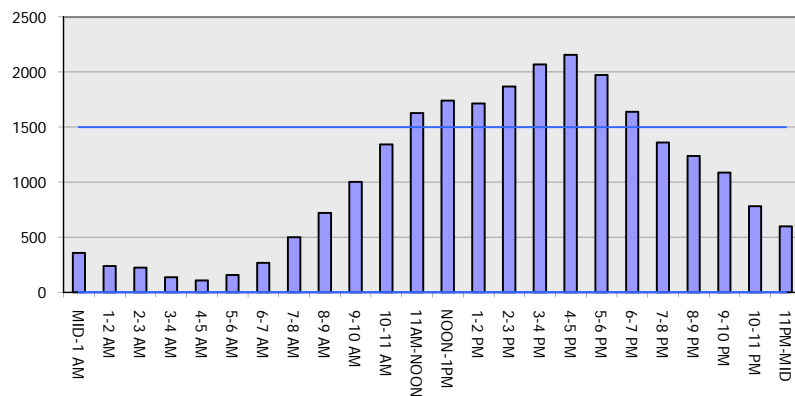
**OCTOBER**

Analyzed for 2009  
Construction Season

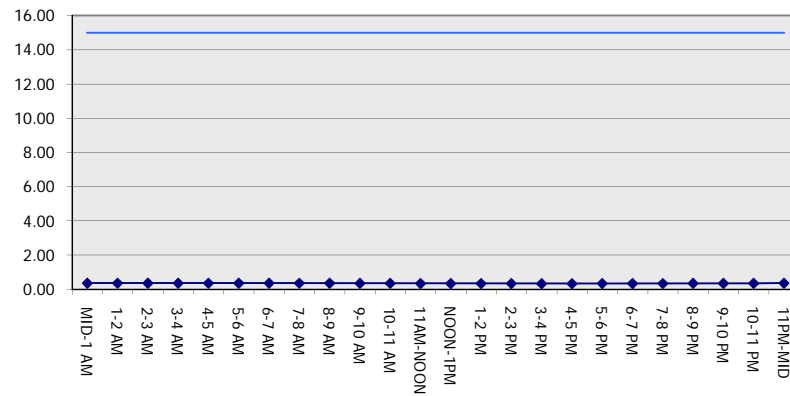
**GRAPHICAL REPRESENTATION OF TRAFFIC MODEL INPUT AND OUTPUT**

**SATURDAY NORTHBOUND DIRECTION**

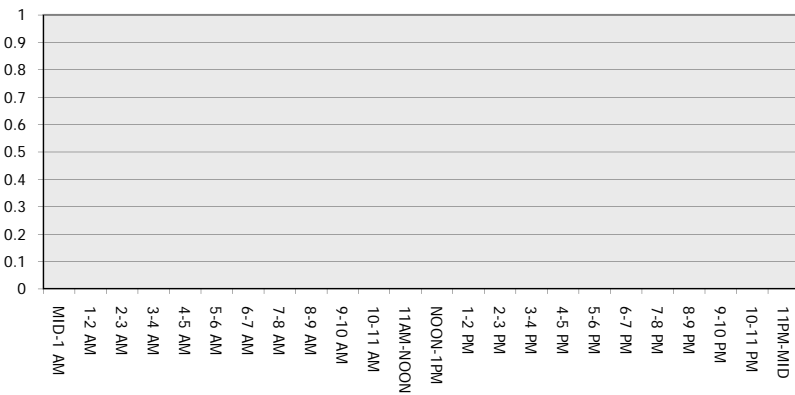
**Main Route - Traffic Demand (Vehicles Per Hour)**



**Main Route Average Delay Per Vehicle (Minutes)**



**Main Route - Average Queue Length (Vehicles)**



**Main Route - Average Speed (MPH)**

