

**USH 151: IH 39 TO STH 19 (DANE COUNTY)  
CONTINUOUS (24 HOUR) 2 LANE CLOSURE  
NO DIVERSION ROUTE (MAX QUEUE SEGMENT)**

**OCTOBER**  
Analyzed for 2009  
Construction Season

**SUMMARY OF TRAFFIC MODEL OUTPUT**  
FRIDAY SOUTHBOUND DIRECTION

TIME OF DAY	FLOWS AND CAPACITY IN VEH/HR						AVERAGE SPEEDS IN MPH			
	MAIN ROUTE		SITE CAPA CITY	FLOW		AV.DEL PER VEH (MINS)	AVERAGE QUEUE (VEH)	MAIN ROUTE		SITE
	DEMAND FLOW	PCT HEAVY		MAIN ROUTE	'DIVER TED'			WITHOUT WORK ZONE	WITH WORK ZONE	
MID-1 AM	155	0.0	1500	155	0	0.49	0	70.2	62.5	44.8
1-2 AM	168	0.0	1500	168	0	0.49	0	70.2	62.5	44.8
2-3 AM	134	0.0	1500	134	0	0.49	0	70.2	62.5	45.0
3-4 AM	209	0.0	1500	209	0	0.50	0	70.2	62.4	44.6
4-5 AM	317	0.0	1500	317	0	0.51	0	70.2	62.2	44.2
5-6 AM	699	0.0	1500	699	0	0.55	0	69.9	61.4	42.8
6-7 AM	1562	0.0	1499	1562	0	1.97	33	68.8	46.5	32.4
7-8 AM	2316	0.0	1500	1747	568	14.11+	356	67.9	15.4	32.8
8-9 AM	1604	0.0	1499	1479	125	15.75+	384	68.7	14.2	30.8
9-10 AM	1143	0.0	1499	1143	0	7.03	194	69.3	25.4	33.9
10-11 AM	1138	0.0	1500	1138	0	0.63	0	69.3	60.1	40.6
11AM-NOON	1202	0.0	1500	1202	0	0.71	0	69.2	58.9	38.4
NOON-1PM	1204	0.0	1500	1204	0	0.71	0	69.2	58.9	38.3
1-2 PM	1187	0.0	1500	1187	0	0.69	0	69.2	59.2	38.9
2-3 PM	1176	0.0	1500	1176	0	0.68	0	69.2	59.4	39.2
3-4 PM	1272	0.0	1500	1272	0	0.80	0	69.2	57.8	36.3
4-5 PM	1413	0.0	1500	1413	0	0.98	0	69.0	55.6	32.7
5-6 PM	1352	0.0	1500	1352	0	0.91	0	69.1	56.5	34.2
6-7 PM	1174	0.0	1500	1174	0	0.67	0	69.3	59.4	39.3
7-8 PM	758	0.0	1500	758	0	0.56	0	69.8	61.3	42.5
8-9 PM	547	0.0	1500	547	0	0.54	0	70.0	61.8	43.3
9-10 PM	442	0.0	1500	442	0	0.53	0	70.2	62.0	43.7
10-11 PM	317	0.0	1500	317	0	0.51	0	70.2	62.2	44.2
11PM-MID	275	0.0	1500	275	0	0.51	0	70.2	62.3	44.4

+ INDICATES QUEUEING EXCEEDS USER-SPECIFIED MAXIMUM LIMIT

*----- SITE BREAKDOWN DELAYS -----*	
BREAKDOWN DURATION (MINS)	0
RANGE OF QUEUE DELAY - MIN (VEH-H) MAX	0.0
AV BREAKDOWNS PER DAY	0.00
AV QUEUE DELAY/DAY (VEH-H)	0.0
AV TOTAL DELAY/DAY (VEH-H)	0.0

*----- SITE ACCIDENT DELAYS -----*	
BREAKDOWN DURATION (MINS)	0
RANGE OF QUEUE DELAY - MIN (VEH-H) MAX	0
AV BREAKDOWNS PER DAY	0
AV QUEUE DELAY/DAY (VEH-H)	0
AV TOTAL DELAY/DAY (VEH-H)	0

AVERAGE ACCIDENT NUMBERS (PIA/DAY)	
MAIN ROUTE WITHOUT WORKS	0.0163
MAIN ROUTE WITH WORKS	0.0144
'DIVERSION'	0.0012
PIA: Personal Injury Accidents	
IMPACTS ON ROAD USERS	
ROAD USER COSTS PER DAY	\$17,842
CONGESTED HOURS PER DAY*	2

\*Delays Exceeding User-Specified Maximum

**USH 151: IH 39 TO STH 19 (DANE COUNTY)  
CONTINUOUS (24 HOUR) 2 LANE CLOSURE  
NO DIVERSION ROUTE (MAX QUEUE SEGMENT)**

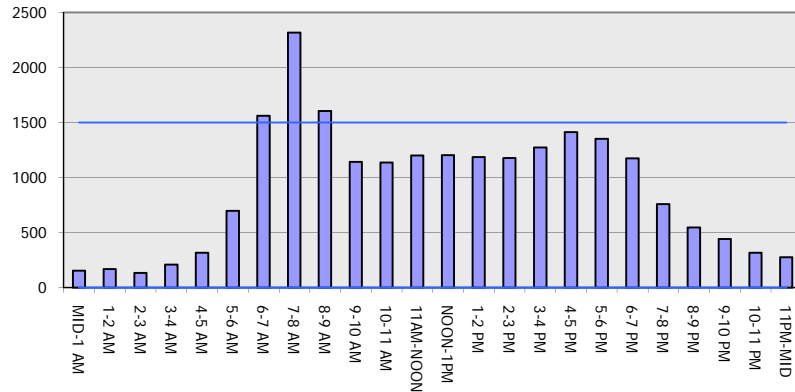
**OCTOBER**

Analyzed for 2009  
Construction Season

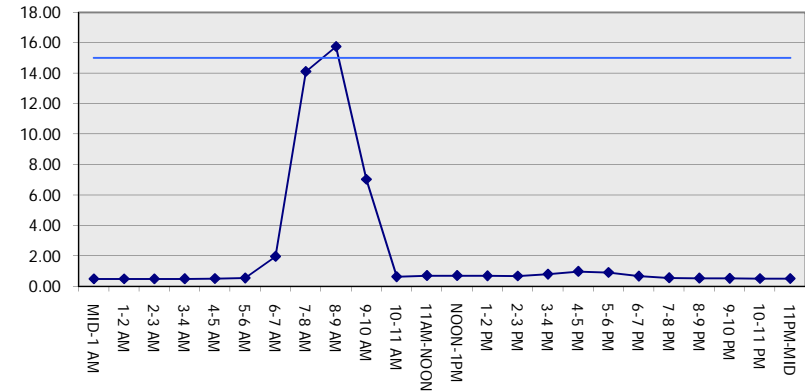
**GRAPHICAL REPRESENTATION OF TRAFFIC MODEL INPUT AND OUTPUT**

**FRIDAY SOUTHBOUND DIRECTION**

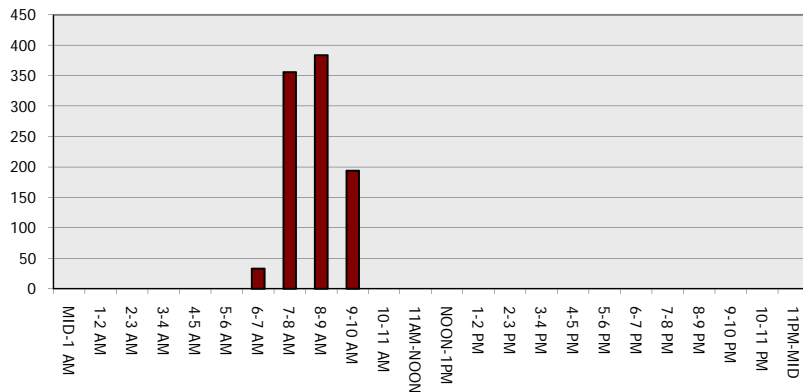
**Main Route - Traffic Demand (Vehicles Per Hour)**



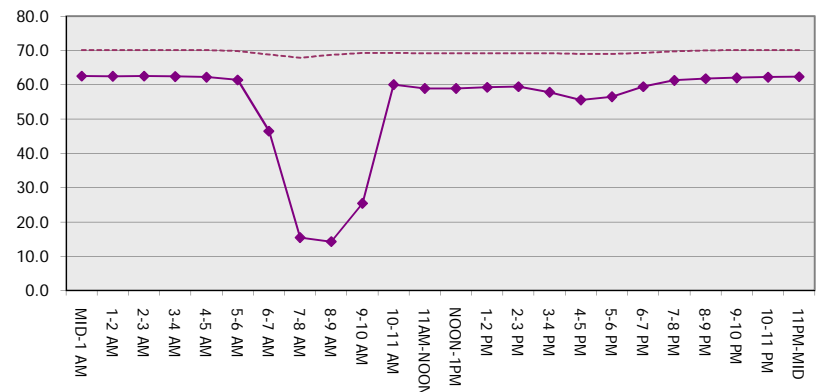
**Main Route Average Delay Per Vehicle (Minutes)**



**Main Route - Average Queue Length (Vehicles)**



**Main Route - Average Speed (MPH)**



<b>USH 151: IH 39 TO STH 19 (DANE COUNTY)                  CONTINUOUS (24 HOUR) 2 LANE CLOSURE                  NO DIVERSION ROUTE (MAX QUEUE SEGMENT)</b>	<b>OCTOBER</b>
	Analyzed for 2009 Construction Season

**SUMMARY OF TRAFFIC MODEL OUTPUT**

FRIDAY NORTHBOUND DIRECTION

TIME OF DAY	FLOWS AND CAPACITY IN VEH/HR							AVERAGE SPEEDS IN MPH		
	MAIN ROUTE		SITE CAPA CITY	FLOW		AV.DEL PER VEH (MINS)	AVERAGE QUEUE (VEH)	MAIN ROUTE		SITE
	DEMAND FLOW	PCT HEAVY		MAIN ROUTE	'DIVER TED'			WITHOUT WORK ZONE	WITH WORK ZONE	
MID-1 AM	252	0.0	1500	252	0	0.50	0	70.2	62.3	44.5
1-2 AM	182	0.0	1500	182	0	0.49	0	70.2	62.5	44.8
2-3 AM	147	0.0	1500	147	0	0.49	0	70.2	62.5	44.9
3-4 AM	101	0.0	1500	101	0	0.48	0	70.2	62.6	45.1
4-5 AM	135	0.0	1500	135	0	0.49	0	70.2	62.5	45.0
5-6 AM	310	0.0	1500	310	0	0.51	0	70.2	62.3	44.2
6-7 AM	736	0.0	1500	736	0	0.56	0	69.8	61.4	42.6
7-8 AM	1200	0.0	1500	1200	0	0.71	0	69.2	59.0	38.4
8-9 AM	1011	0.0	1500	1011	0	0.59	0	69.5	60.7	41.7
9-10 AM	1072	0.0	1500	1072	0	0.59	0	69.4	60.5	41.4
10-11 AM	1263	0.0	1499	1263	0	0.79	0	69.2	57.9	36.6
11AM-NOON	1644	0.0	1499	1644	0	2.77	51	68.7	41.0	30.8
NOON-1PM	1937	0.0	1500	1709	228	12.59+	318	68.3	16.8	30.8
1-2 PM	2075	0.0	1499	1500	575	16.33+	399	68.2	13.8	30.8
2-3 PM	2444	0.0	1500	1500	944	16.31+	400	67.7	13.8	30.8
3-4 PM	2838	0.0	1500	1500	1338	16.28+	400	67.2	13.8	30.8
4-5 PM	3175	0.0	1499	1500	1675	16.25+	400	66.8	13.8	30.8
5-6 PM	3036	0.0	1500	1500	1536	16.26+	400	66.9	13.8	30.8
6-7 PM	2130	0.0	1500	1500	630	16.33+	400	68.1	13.8	30.8
7-8 PM	1549	0.0	1500	1524	26	15.95+	389	68.8	14.0	30.8
8-9 PM	1375	0.0	1499	1375	0	13.51	327	69.0	16.0	30.8
9-10 PM	1141	0.0	1499	1141	0	3.40	102	69.3	37.8	36.5
10-11 PM	841	0.0	1500	841	0	0.57	0	69.7	61.1	42.2
11PM-MID	631	0.0	1500	631	0	0.55	0	69.9	61.6	43.0

+ INDICATES QUEUEING EXCEEDS USER-SPECIFIED MAXIMUM LIMIT

*----- SITE BREAKDOWN DELAYS -----*	
BREAKDOWN DURATION (MINS)	0
RANGE OF QUEUE DELAY - MIN (VEH-H) MAX	0.0
AV BREAKDOWNS PER DAY	0.00
AV QUEUE DELAY/DAY (VEH-H)	0.0
AV TOTAL DELAY/DAY (VEH-H)	0.0

*----- SITE ACCIDENT DELAYS -----*	
BREAKDOWN DURATION (MINS)	0
RANGE OF QUEUE DELAY - MIN (VEH-H) MAX	0
AV BREAKDOWNS PER DAY	0
AV QUEUE DELAY/DAY (VEH-H)	0
AV TOTAL DELAY/DAY (VEH-H)	0

AVERAGE ACCIDENT NUMBERS (PIA/DAY)	
MAIN ROUTE WITHOUT WORKS	0.0233
MAIN ROUTE WITH WORKS	0.0165
'DIVERSION'	0.0120

PIA: Personal Injury Accidents

ECONOMIC IMPACT ON ROAD USERS	
ROAD USER COSTS PER DAY	\$75,416
CONGESTED HOURS PER DAY*	8

\*Delays Exceeding User-Specified Maximum

**USH 151: IH 39 TO STH 19 (DANE COUNTY)  
CONTINUOUS (24 HOUR) 2 LANE CLOSURE  
NO DIVERSION ROUTE (MAX QUEUE SEGMENT)**

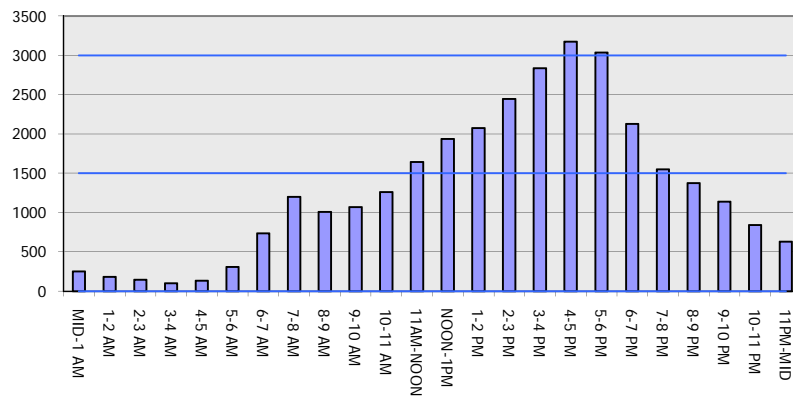
**OCTOBER**

Analyzed for 2009  
Construction Season

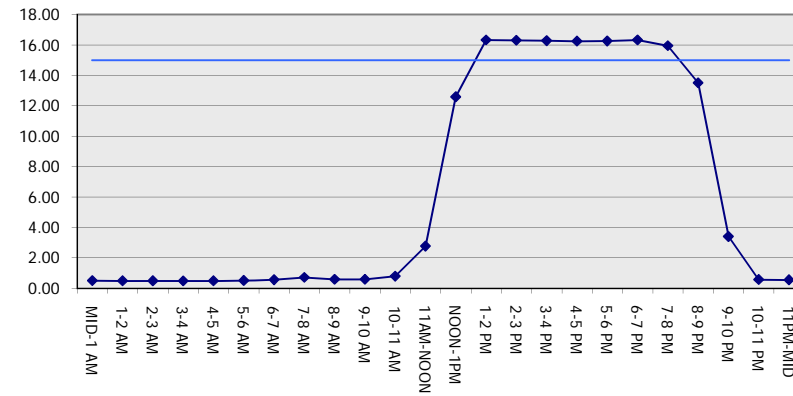
**GRAPHICAL REPRESENTATION OF TRAFFIC MODEL INPUT AND OUTPUT**

**FRIDAY NORTHBOUND DIRECTION**

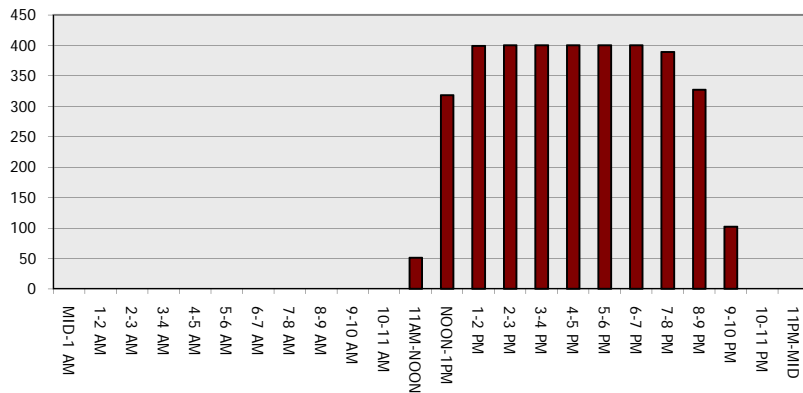
**Main Route - Traffic Demand (Vehicles Per Hour)**



**Main Route Average Delay Per Vehicle (Minutes)**



**Main Route - Average Queue Length (Vehicles)**



**Main Route - Average Speed (MPH)**

