

<b>USH 151: IH 39 TO STH 19 (DANE COUNTY)                  CONTINUOUS (24 HOUR) CLOSURE                  NO DIVERSION ROUTE (MAX QUEUE SEGMENT)</b>	<b>OCTOBER</b>
	Analyzed for 2009 Construction Season

**SUMMARY OF TRAFFIC MODEL OUTPUT**

FRIDAY SOUTHBOUND DIRECTION

TIME OF DAY	FLOWS AND CAPACITY IN VEH/HR						AVERAGE SPEEDS IN MPH			
	MAIN ROUTE		SITE CAPA CITY	FLOW		AV.DEL PER VEH (MINS)	AVERAGE QUEUE (VEH)	MAIN ROUTE		SITE
	DEMAND FLOW	PCT HEAVY		MAIN ROUTE	'DIVER TED'			WITHOUT WORK ZONE	WITH WORK ZONE	
MID-1 AM	155	0.0	3000	155	0	0.36	0	70.2	64.4	49.7
1-2 AM	168	0.0	3000	168	0	0.36	0	70.2	64.4	49.7
2-3 AM	134	0.0	3000	134	0	0.36	0	70.2	64.4	49.7
3-4 AM	209	0.0	3000	209	0	0.36	0	70.2	64.4	49.7
4-5 AM	317	0.0	3000	317	0	0.36	0	70.2	64.4	49.7
5-6 AM	699	0.0	3000	699	0	0.36	0	69.9	64.2	49.7
6-7 AM	1562	0.0	3000	1562	0	0.34	0	68.8	63.5	49.7
7-8 AM	2316	0.0	3000	2316	0	0.33	0	67.9	62.8	49.7
8-9 AM	1604	0.0	3000	1604	0	0.34	0	68.7	63.5	49.7
9-10 AM	1143	0.0	3000	1143	0	0.35	0	69.3	63.8	49.7
10-11 AM	1138	0.0	3000	1138	0	0.35	0	69.3	63.8	49.7
11AM-NOON	1202	0.0	3000	1202	0	0.35	0	69.2	63.8	49.7
NOON-1PM	1204	0.0	3000	1204	0	0.35	0	69.2	63.8	49.7
1-2 PM	1187	0.0	3000	1187	0	0.35	0	69.2	63.8	49.7
2-3 PM	1176	0.0	3000	1176	0	0.35	0	69.2	63.8	49.7
3-4 PM	1272	0.0	3000	1272	0	0.35	0	69.2	63.7	49.7
4-5 PM	1413	0.0	3000	1413	0	0.34	0	69.0	63.6	49.7
5-6 PM	1352	0.0	3000	1352	0	0.35	0	69.1	63.7	49.7
6-7 PM	1174	0.0	3000	1174	0	0.35	0	69.3	63.8	49.7
7-8 PM	758	0.0	3000	758	0	0.35	0	69.8	64.1	49.7
8-9 PM	547	0.0	3000	547	0	0.36	0	70.0	64.3	49.7
9-10 PM	442	0.0	3000	442	0	0.36	0	70.2	64.4	49.7
10-11 PM	317	0.0	3000	317	0	0.36	0	70.2	64.4	49.7
11PM-MID	275	0.0	3000	275	0	0.36	0	70.2	64.4	49.7

*----- SITE BREAKDOWN DELAYS -----*	
BREAKDOWN DURATION (MINS)	0
RANGE OF QUEUE DELAY - MIN (VEH-H) MAX	0.0
AV BREAKDOWNS PER DAY	0.00
AV QUEUE DELAY/DAY (VEH-H)	0.0
AV TOTAL DELAY/DAY (VEH-H)	0.0

*----- SITE ACCIDENT DELAYS -----*	
BREAKDOWN DURATION (MINS)	0
RANGE OF QUEUE DELAY - MIN (VEH-H) MAX	0
AV BREAKDOWNS PER DAY	0
AV QUEUE DELAY/DAY (VEH-H)	0
AV TOTAL DELAY/DAY (VEH-H)	0

AVERAGE ACCIDENT NUMBERS (PIA/DAY)	
MAIN ROUTE WITHOUT WORKS	0.0163
MAIN ROUTE WITH WORKS	0.0148
'DIVERSION'	0.0000
PIA: Personal Injury Accidents	
IMPACTS ON ROAD USERS	
ROAD USER COSTS PER DAY	\$1,579
CONGESTED HOURS PER DAY*	0

\*Delays Exceeding User-Specified Maximum

**USH 151: IH 39 TO STH 19 (DANE COUNTY)  
CONTINUOUS (24 HOUR) CLOSURE  
NO DIVERSION ROUTE (MAX QUEUE SEGMENT)**

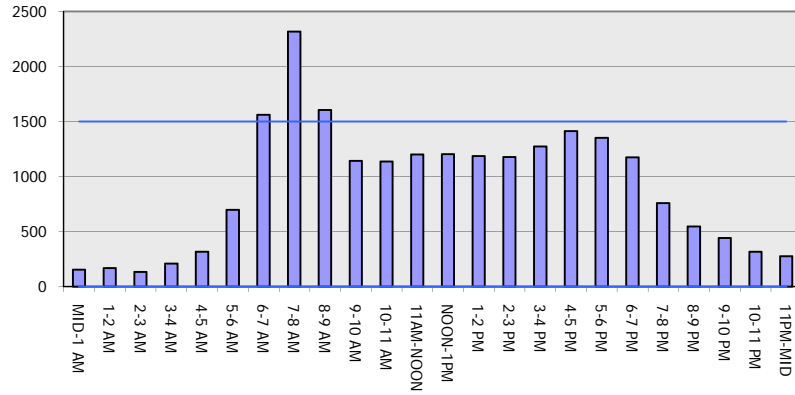
**OCTOBER**

Analyzed for 2009  
Construction Season

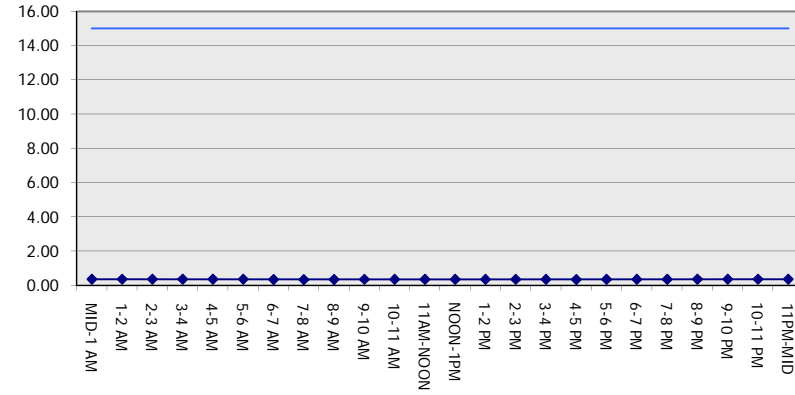
**GRAPHICAL REPRESENTATION OF TRAFFIC MODEL INPUT AND OUTPUT**

**FRIDAY SOUTHBOUND DIRECTION**

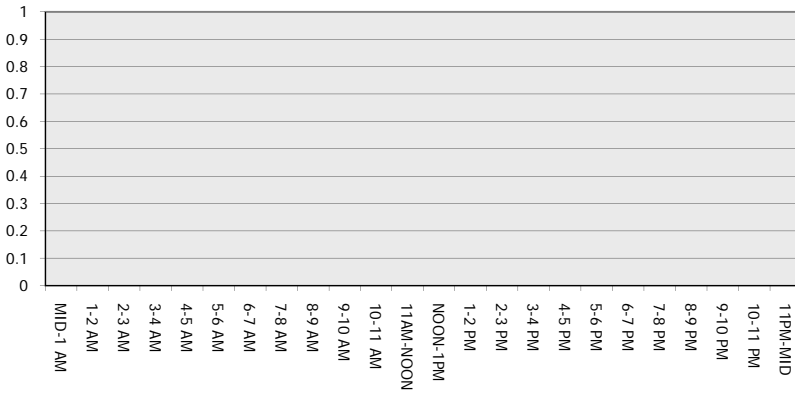
**Main Route - Traffic Demand (Vehicles Per Hour)**



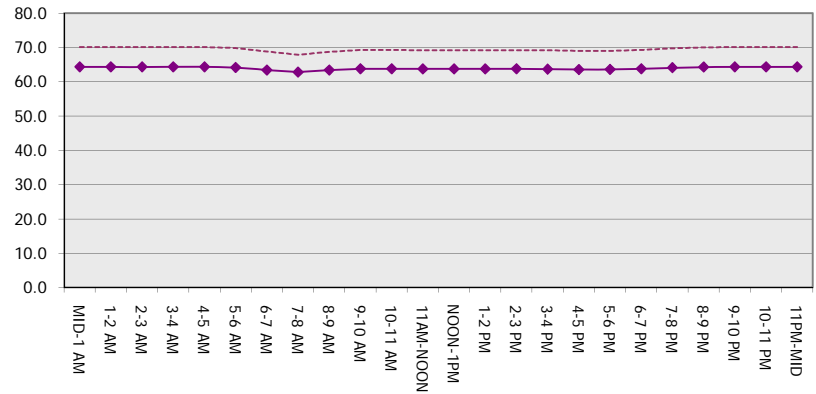
**Main Route Average Delay Per Vehicle (Minutes)**



**Main Route - Average Queue Length (Vehicles)**



**Main Route - Average Speed (MPH)**



<b>USH 151: IH 39 TO STH 19 (DANE COUNTY)                  CONTINUOUS (24 HOUR) CLOSURE                  NO DIVERSION ROUTE (MAX QUEUE SEGMENT)</b>	<b>OCTOBER</b>
	Analyzed for 2009 Construction Season

**SUMMARY OF TRAFFIC MODEL OUTPUT**

FRIDAY NORTHBOUND DIRECTION

TIME OF DAY	FLOWS AND CAPACITY IN VEH/HR							AVERAGE SPEEDS IN MPH		
	MAIN ROUTE		SITE CAPA CITY	FLOW		AV.DEL PER VEH (MINS)	AVERAGE QUEUE (VEH)	MAIN ROUTE		SITE
	DEMAND FLOW	PCT HEAVY		MAIN ROUTE	'DIVER TED'			WITHOUT WORK ZONE	WITH WORK ZONE	
MID-1 AM	252	0.0	3000	252	0	0.36	0	70.2	64.4	49.7
1-2 AM	182	0.0	3000	182	0	0.36	0	70.2	64.4	49.7
2-3 AM	147	0.0	3000	147	0	0.36	0	70.2	64.4	49.7
3-4 AM	101	0.0	3000	101	0	0.36	0	70.2	64.4	49.7
4-5 AM	135	0.0	3000	135	0	0.36	0	70.2	64.4	49.7
5-6 AM	310	0.0	3000	310	0	0.36	0	70.2	64.4	49.7
6-7 AM	736	0.0	3000	736	0	0.35	0	69.8	64.1	49.7
7-8 AM	1200	0.0	3000	1200	0	0.35	0	69.2	63.8	49.7
8-9 AM	1011	0.0	3000	1011	0	0.35	0	69.5	64.0	49.7
9-10 AM	1072	0.0	3000	1072	0	0.35	0	69.4	63.9	49.7
10-11 AM	1263	0.0	3000	1263	0	0.35	0	69.2	63.7	49.7
11AM-NOON	1644	0.0	3000	1644	0	0.34	0	68.7	63.4	49.7
NOON-1PM	1937	0.0	3000	1937	0	0.34	0	68.3	63.2	49.7
1-2 PM	2075	0.0	3000	2075	0	0.33	0	68.2	63.1	49.7
2-3 PM	2444	0.0	3000	2444	0	0.37	0	67.7	62.2	48.2
3-4 PM	2838	0.0	2999	2838	0	0.62	0	67.2	58.5	39.9
4-5 PM	3175	0.0	2999	3175	0	2.10	81	66.8	44.6	37.3
5-6 PM	3036	0.0	2999	3036	0	4.81	225	66.9	31.2	37.3
6-7 PM	2130	0.0	3000	2130	0	0.78	32	68.1	57.3	48.9
7-8 PM	1549	0.0	3000	1549	0	0.34	0	68.8	63.5	49.7
8-9 PM	1375	0.0	3000	1375	0	0.34	0	69.0	63.7	49.7
9-10 PM	1141	0.0	3000	1141	0	0.35	0	69.3	63.8	49.7
10-11 PM	841	0.0	3000	841	0	0.35	0	69.7	64.1	49.7
11PM-MID	631	0.0	3000	631	0	0.36	0	69.9	64.3	49.7

*----- SITE BREAKDOWN DELAYS -----*	
BREAKDOWN DURATION (MINS)	0
RANGE OF QUEUE DELAY - MIN (VEH-H) MAX	0.0
AV BREAKDOWNS PER DAY	0.00
AV QUEUE DELAY/DAY (VEH-H)	0.0
AV TOTAL DELAY/DAY (VEH-H)	0.0

*----- SITE ACCIDENT DELAYS -----*	
BREAKDOWN DURATION (MINS)	0
RANGE OF QUEUE DELAY - MIN (VEH-H) MAX	0
AV BREAKDOWNS PER DAY	0
AV QUEUE DELAY/DAY (VEH-H)	0
AV TOTAL DELAY/DAY (VEH-H)	0

AVERAGE ACCIDENT NUMBERS (PIA/DAY)	
MAIN ROUTE WITHOUT WORKS	0.0233
MAIN ROUTE WITH WORKS	0.0213
'DIVERSION'	0.0000

PIA: Personal Injury Accidents

ECONOMIC IMPACT ON ROAD USERS	
ROAD USER COSTS PER DAY	\$6,617
CONGESTED HOURS PER DAY*	0

\*Delays Exceeding User-Specified Maximum

**USH 151: IH 39 TO STH 19 (DANE COUNTY)  
CONTINUOUS (24 HOUR) CLOSURE  
NO DIVERSION ROUTE (MAX QUEUE SEGMENT)**

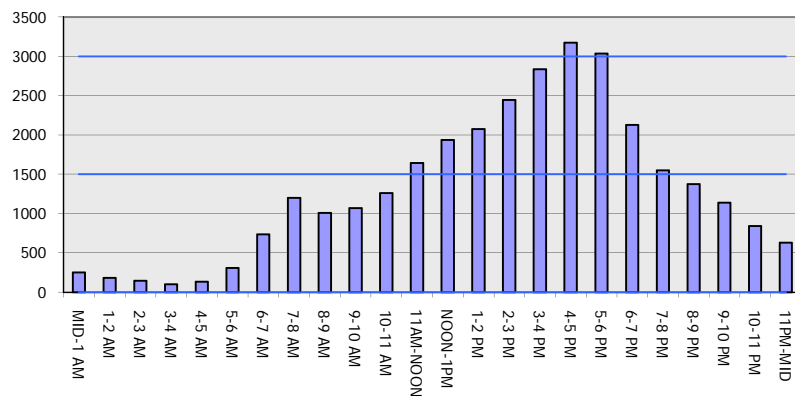
**OCTOBER**

Analyzed for 2009  
Construction Season

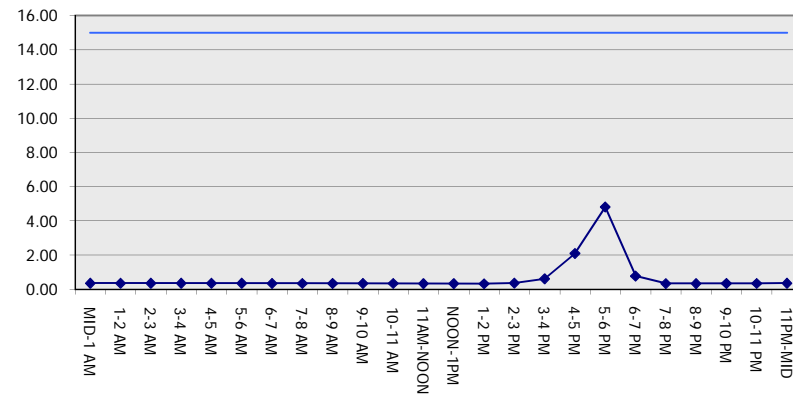
**GRAPHICAL REPRESENTATION OF TRAFFIC MODEL INPUT AND OUTPUT**

**FRIDAY NORTHBOUND DIRECTION**

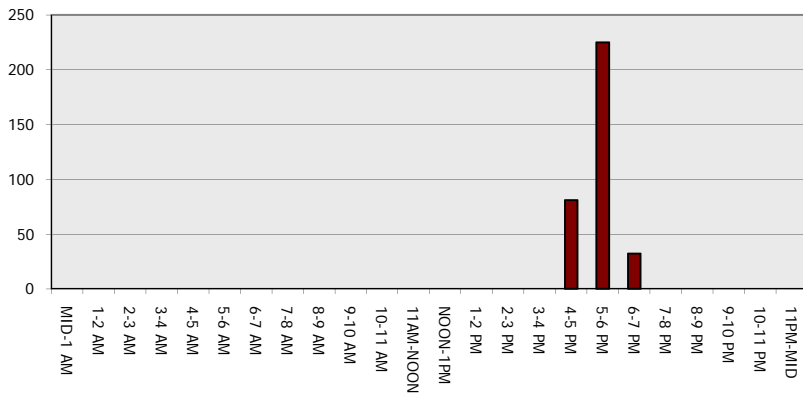
**Main Route - Traffic Demand (Vehicles Per Hour)**



**Main Route Average Delay Per Vehicle (Minutes)**



**Main Route - Average Queue Length (Vehicles)**



**Main Route - Average Speed (MPH)**

