

USH 151: IH 39 TO STH 19 (DANE COUNTY) CONTINUOUS (24 HOUR) CLOSURE NO DIVERSION ROUTE (MAX QUEUE SEGMENT)	AUGUST
	Analyzed for 2009 Construction Season

SUMMARY OF TRAFFIC MODEL OUTPUT

SUNDAY SOUTHBOUND DIRECTION

TIME OF DAY	FLOWS AND CAPACITY IN VEH/HR						AVERAGE SPEEDS IN MPH			
	MAIN ROUTE		SITE CAPA CITY	FLOW		AV.DEL PER VEH (MINS)	AVERAGE QUEUE (VEH)	MAIN ROUTE		SITE
	DEMAND FLOW	PCT HEAVY		MAIN ROUTE	'DIVER TED'			WITHOUT WORK ZONE	WITH WORK ZONE	
MID-1 AM	320	0.0	3000	320	0	0.36	0	70.2	64.4	49.7
1-2 AM	200	0.0	3000	200	0	0.36	0	70.2	64.4	49.7
2-3 AM	162	0.0	3000	162	0	0.36	0	70.2	64.4	49.7
3-4 AM	105	0.0	3000	105	0	0.36	0	70.2	64.4	49.7
4-5 AM	105	0.0	3000	105	0	0.36	0	70.2	64.4	49.7
5-6 AM	147	0.0	3000	147	0	0.36	0	70.2	64.4	49.7
6-7 AM	291	0.0	3000	291	0	0.36	0	70.2	64.4	49.7
7-8 AM	421	0.0	3000	421	0	0.36	0	70.2	64.4	49.7
8-9 AM	663	0.0	3000	663	0	0.36	0	69.9	64.2	49.7
9-10 AM	1047	0.0	3000	1047	0	0.35	0	69.4	63.9	49.7
10-11 AM	1452	0.0	3000	1452	0	0.34	0	68.9	63.6	49.7
11AM-NOON	1800	0.0	3000	1800	0	0.34	0	68.5	63.3	49.7
NOON-1PM	1840	0.0	3000	1840	0	0.34	0	68.4	63.3	49.7
1-2 PM	1742	0.0	3000	1742	0	0.34	0	68.6	63.3	49.7
2-3 PM	1758	0.0	3000	1758	0	0.34	0	68.6	63.3	49.7
3-4 PM	1692	0.0	3000	1692	0	0.34	0	68.6	63.4	49.7
4-5 PM	1638	0.0	3000	1638	0	0.34	0	68.7	63.4	49.7
5-6 PM	1443	0.0	3000	1443	0	0.34	0	68.9	63.6	49.7
6-7 PM	1304	0.0	3000	1304	0	0.35	0	69.1	63.7	49.7
7-8 PM	1106	0.0	3000	1106	0	0.35	0	69.4	63.9	49.7
8-9 PM	930	0.0	3000	930	0	0.35	0	69.6	64.0	49.7
9-10 PM	760	0.0	3000	760	0	0.35	0	69.8	64.1	49.7
10-11 PM	555	0.0	3000	555	0	0.36	0	70.0	64.3	49.7
11PM-MID	248	0.0	3000	248	0	0.36	0	70.2	64.4	49.7

----- SITE BREAKDOWN DELAYS -----	
BREAKDOWN DURATION (MINS)	0
RANGE OF QUEUE DELAY - MIN (VEH-H) MAX	0.0
AV BREAKDOWNS PER DAY	0.00
AV QUEUE DELAY/DAY (VEH-H)	0.0
AV TOTAL DELAY/DAY (VEH-H)	0.0

----- SITE ACCIDENT DELAYS -----	
BREAKDOWN DURATION (MINS)	0
RANGE OF QUEUE DELAY - MIN (VEH-H) MAX	0
AV BREAKDOWNS PER DAY	0
AV QUEUE DELAY/DAY (VEH-H)	0
AV TOTAL DELAY/DAY (VEH-H)	0

AVERAGE ACCIDENT NUMBERS (PIA/DAY)	
MAIN ROUTE WITHOUT WORKS	0.0162
MAIN ROUTE WITH WORKS	0.0148
'DIVERSION'	0.0000
PIA: Personal Injury Accidents	
IMPACTS ON ROAD USERS	
ROAD USER COSTS PER DAY	\$1,853
CONGESTED HOURS PER DAY*	0

*Delays Exceeding User-Specified Maximum

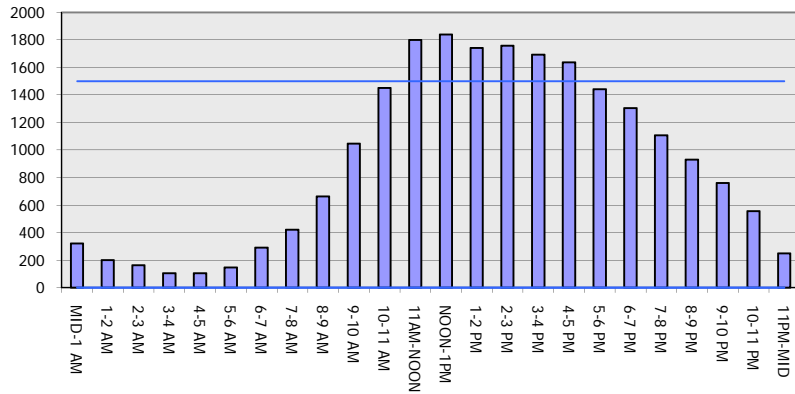
**USH 151: IH 39 TO STH 19 (DANE COUNTY)
CONTINUOUS (24 HOUR) CLOSURE
NO DIVERSION ROUTE (MAX QUEUE SEGMENT)**

AUGUST
Analyzed for 2009
Construction Season

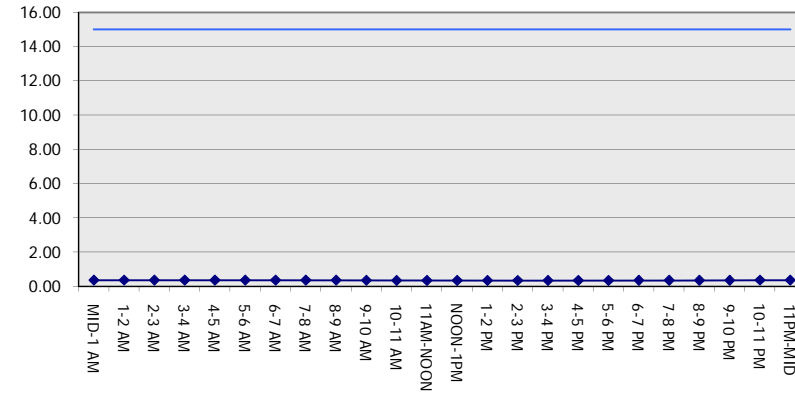
GRAPHICAL REPRESENTATION OF TRAFFIC MODEL INPUT AND OUTPUT

SUNDAY SOUTHBOUND DIRECTION

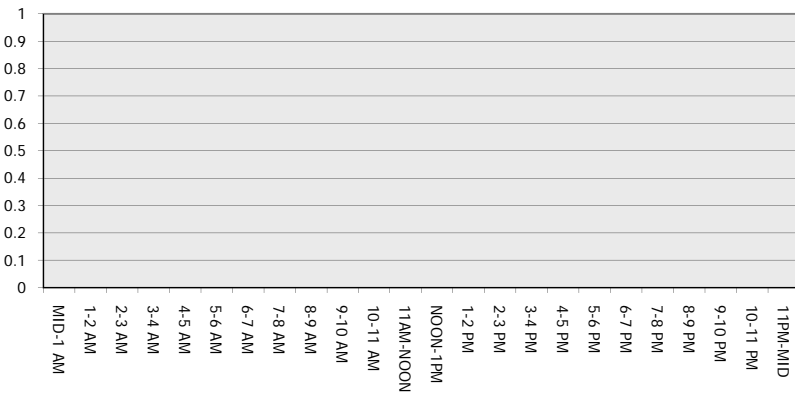
Main Route - Traffic Demand (Vehicles Per Hour)



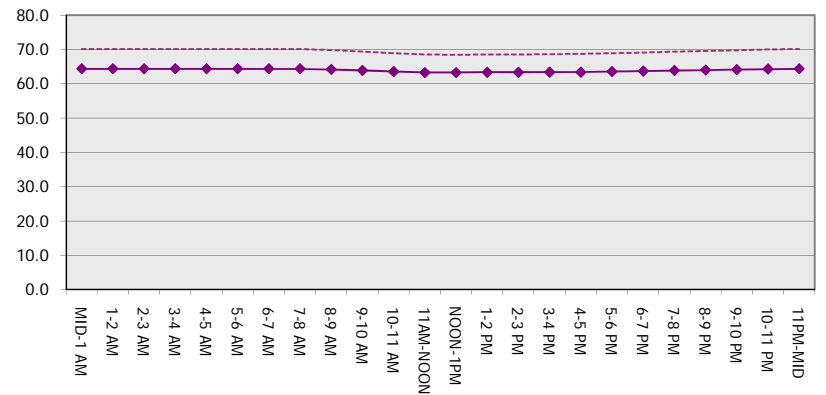
Main Route Average Delay Per Vehicle (Minutes)



Main Route - Average Queue Length (Vehicles)



Main Route - Average Speed (MPH)



USH 151: IH 39 TO STH 19 (DANE COUNTY) CONTINUOUS (24 HOUR) CLOSURE NO DIVERSION ROUTE (MAX QUEUE SEGMENT)	AUGUST
	Analyzed for 2009 Construction Season

SUMMARY OF TRAFFIC MODEL OUTPUT

SUNDAY NORTHBOUND DIRECTION

TIME OF DAY	FLOWS AND CAPACITY IN VEH/HR							AVERAGE SPEEDS IN MPH		
	MAIN ROUTE		SITE CAPA CITY	FLOW		AV.DEL PER VEH (MINS)	AVERAGE QUEUE (VEH)	MAIN ROUTE		SITE
	DEMAND FLOW	PCT HEAVY		MAIN ROUTE	'DIVER TED'			WITHOUT WORK ZONE	WITH WORK ZONE	
MID-1 AM	379	0.0	3000	379	0	0.36	0	70.2	64.4	49.7
1-2 AM	239	0.0	3000	239	0	0.36	0	70.2	64.4	49.7
2-3 AM	213	0.0	3000	213	0	0.36	0	70.2	64.4	49.7
3-4 AM	130	0.0	3000	130	0	0.36	0	70.2	64.4	49.7
4-5 AM	81	0.0	3000	81	0	0.36	0	70.2	64.4	49.7
5-6 AM	96	0.0	3000	96	0	0.36	0	70.2	64.4	49.7
6-7 AM	205	0.0	3000	205	0	0.36	0	70.2	64.4	49.7
7-8 AM	347	0.0	3000	347	0	0.36	0	70.2	64.4	49.7
8-9 AM	466	0.0	3000	466	0	0.36	0	70.2	64.4	49.7
9-10 AM	738	0.0	3000	738	0	0.35	0	69.8	64.1	49.7
10-11 AM	1013	0.0	3000	1013	0	0.35	0	69.5	64.0	49.7
11AM-NOON	1371	0.0	3000	1371	0	0.34	0	69.1	63.7	49.7
NOON-1PM	1548	0.0	3000	1548	0	0.34	0	68.8	63.5	49.7
1-2 PM	1660	0.0	3000	1660	0	0.34	0	68.7	63.4	49.7
2-3 PM	1755	0.0	3000	1755	0	0.34	0	68.6	63.3	49.7
3-4 PM	1844	0.0	3000	1844	0	0.34	0	68.4	63.3	49.7
4-5 PM	1800	0.0	3000	1800	0	0.34	0	68.5	63.3	49.7
5-6 PM	1652	0.0	3000	1652	0	0.34	0	68.7	63.4	49.7
6-7 PM	1471	0.0	3000	1471	0	0.34	0	68.9	63.6	49.7
7-8 PM	1188	0.0	3000	1188	0	0.35	0	69.2	63.8	49.7
8-9 PM	995	0.0	3000	995	0	0.35	0	69.5	64.0	49.7
9-10 PM	733	0.0	3000	733	0	0.35	0	69.8	64.1	49.7
10-11 PM	495	0.0	3000	495	0	0.36	0	70.1	64.4	49.7
11PM-MID	332	0.0	3000	332	0	0.36	0	70.2	64.4	49.7

----- SITE BREAKDOWN DELAYS -----	
BREAKDOWN DURATION (MINS)	0
RANGE OF QUEUE DELAY - MIN (VEH-H) MAX	0.0
AV BREAKDOWNS PER DAY	0.00
AV QUEUE DELAY/DAY (VEH-H)	0.0
AV TOTAL DELAY/DAY (VEH-H)	0.0

----- SITE ACCIDENT DELAYS -----	
BREAKDOWN DURATION (MINS)	0
RANGE OF QUEUE DELAY - MIN (VEH-H) MAX	0
AV BREAKDOWNS PER DAY	0
AV QUEUE DELAY/DAY (VEH-H)	0
AV TOTAL DELAY/DAY (VEH-H)	0

AVERAGE ACCIDENT NUMBERS (PIA/DAY)	
MAIN ROUTE WITHOUT WORKS	0.0155
MAIN ROUTE WITH WORKS	0.0141
'DIVERSION'	0.0000

PIA: Personal Injury Accidents

ECONOMIC IMPACT ON ROAD USERS	
ROAD USER COSTS PER DAY	\$1,768
CONGESTED HOURS PER DAY*	0

*Delays Exceeding User-Specified Maximum

**USH 151: IH 39 TO STH 19 (DANE COUNTY)
CONTINUOUS (24 HOUR) CLOSURE
NO DIVERSION ROUTE (MAX QUEUE SEGMENT)**

AUGUST

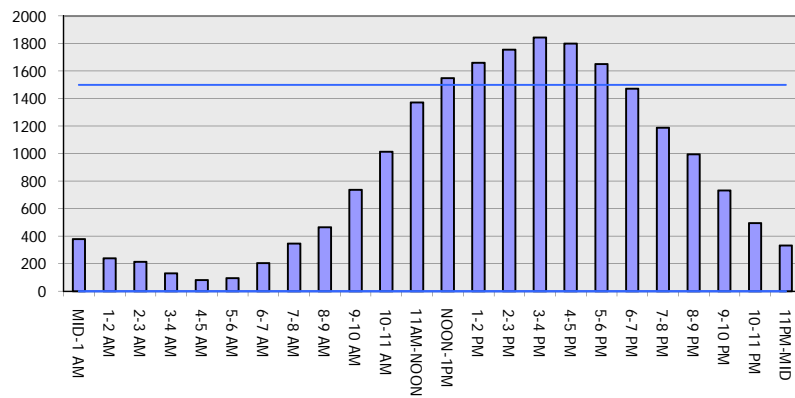
Analyzed for 2009
Construction Season

GRAPHICAL REPRESENTATION OF TRAFFIC MODEL INPUT AND OUTPUT

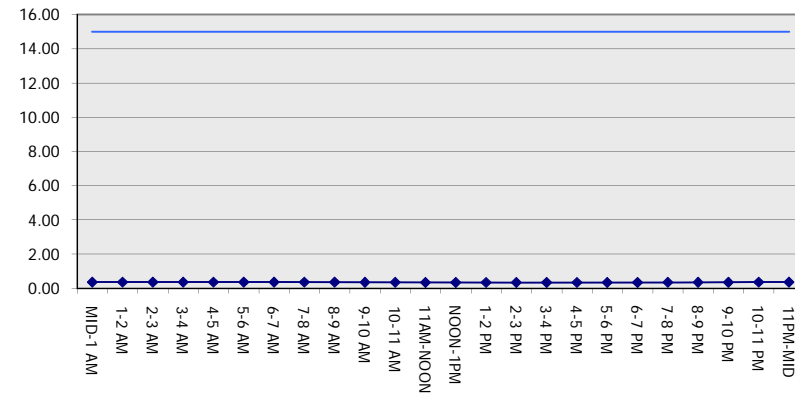
SUNDAY

NORTHBOUND DIRECTION

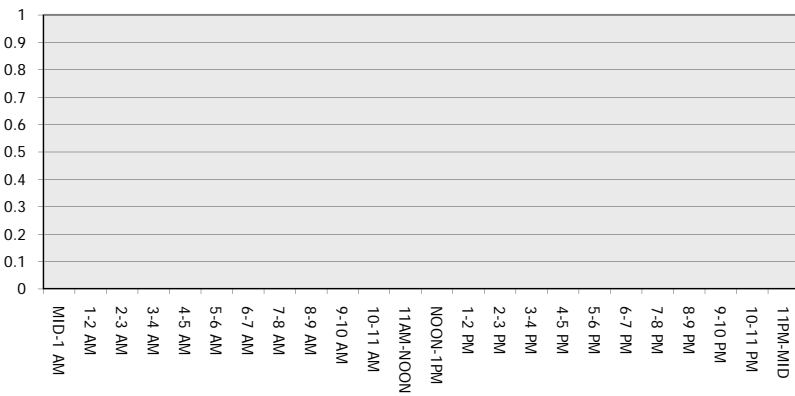
Main Route - Traffic Demand (Vehicles Per Hour)



Main Route Average Delay Per Vehicle (Minutes)



Main Route - Average Queue Length (Vehicles)



Main Route - Average Speed (MPH)

