

USH 151: IH 39 TO STH 19 (DANE COUNTY) CONTINUOUS (24 HOUR) 2 LANE CLOSURE NO DIVERSION ROUTE (MAX QUEUE SEGMENT)	AUGUST
	Analyzed for 2009 Construction Season

SUMMARY OF TRAFFIC MODEL OUTPUT

MON-THUR SOUTHBOUND DIRECTION

TIME OF DAY	FLOWS AND CAPACITY IN VEH/HR							AVERAGE SPEEDS IN MPH			
	MAIN ROUTE		SITE CAPA CITY	FLOW		AV.DEL PER VEH (MINS)	AVERAGE QUEUE (VEH)	MAIN ROUTE		SITE	
	DEMAND FLOW	PCT HEAVY		MAIN ROUTE	'DIVER TED'			WITHOUT WORK ZONE	WITH WORK ZONE		
MID-1 AM	155	0.0	1500	155	0	0.49	0	70.2	62.5	44.8	
1-2 AM	134	0.0	1500	134	0	0.49	0	70.2	62.5	45.0	
2-3 AM	91	0.0	1500	91	0	0.48	0	70.2	62.7	45.1	
3-4 AM	120	0.0	1500	120	0	0.49	0	70.2	62.6	45.0	
4-5 AM	271	0.0	1500	271	0	0.51	0	70.2	62.3	44.4	
5-6 AM	844	0.0	1500	844	0	0.57	0	69.7	61.0	42.2	
6-7 AM	2275	0.0	1499	1883	391	8.95+	249	67.9	21.5	30.8	
7-8 AM	3141	0.0	1499	1500	1641	16.25+	399	66.8	13.8	30.8	
8-9 AM	2010	0.0	1500	1500	510	16.34+	400	68.2	13.8	30.8	
9-10 AM	1585	0.0	1500	1514	71	16.18+	395	68.7	13.9	30.8	
10-11 AM	1546	0.0	1499	1500	46	16.37+	399	68.8	13.8	30.8	
11AM-NOON	1607	0.0	1500	1500	107	16.37+	400	68.7	13.8	30.8	
NOON-1PM	1690	0.0	1500	1500	190	16.36+	400	68.6	13.8	30.8	
1-2 PM	1585	0.0	1500	1500	85	16.37+	400	68.7	13.8	30.8	
2-3 PM	1559	0.0	1500	1500	59	16.37+	400	68.8	13.8	30.8	
3-4 PM	1702	0.0	1500	1500	202	16.36+	400	68.6	13.8	30.8	
4-5 PM	1837	0.0	1500	1500	337	16.35+	400	68.4	13.8	30.8	
5-6 PM	1733	0.0	1500	1500	233	16.36+	400	68.6	13.8	30.8	
6-7 PM	1395	0.0	1500	1395	0	15.02+	366	69.0	14.7	30.8	
7-8 PM	1025	0.0	1499	1025	0	3.11	104	69.5	39.3	38.0	
8-9 PM	755	0.0	1500	755	0	0.56	0	69.8	61.3	42.5	
9-10 PM	599	0.0	1500	599	0	0.54	0	70.0	61.7	43.2	
10-11 PM	432	0.0	1500	432	0	0.53	0	70.2	62.0	43.8	
11PM-MID	244	0.0	1500	244	0	0.50	0	70.2	62.3	44.5	

+ INDICATES QUEUEING EXCEEDS USER-SPECIFIED MAXIMUM LIMIT

----- SITE BREAKDOWN DELAYS -----	
BREAKDOWN DURATION (MINS)	0
RANGE OF QUEUE DELAY - MIN (VEH-H) MAX	0.0
AV BREAKDOWNS PER DAY	0.00
AV QUEUE DELAY/DAY (VEH-H)	0.0
AV TOTAL DELAY/DAY (VEH-H)	0.0

----- SITE ACCIDENT DELAYS -----	
BREAKDOWN DURATION (MINS)	0
RANGE OF QUEUE DELAY - MIN (VEH-H) MAX	0
AV BREAKDOWNS PER DAY	0
AV QUEUE DELAY/DAY (VEH-H)	0
AV TOTAL DELAY/DAY (VEH-H)	0

AVERAGE ACCIDENT NUMBERS (PIA/DAY)	
MAIN ROUTE WITHOUT WORKS	0.0212
MAIN ROUTE WITH WORKS	0.0167
'DIVERSION'	0.0067
PIA: Personal Injury Accidents	
IMPACTS ON ROAD USERS	
ROAD USER COSTS PER DAY	\$81,557
CONGESTED HOURS PER DAY*	13

*Delays Exceeding User-Specified Maximum

**USH 151: IH 39 TO STH 19 (DANE COUNTY)
CONTINUOUS (24 HOUR) 2 LANE CLOSURE
NO DIVERSION ROUTE (MAX QUEUE SEGMENT)**

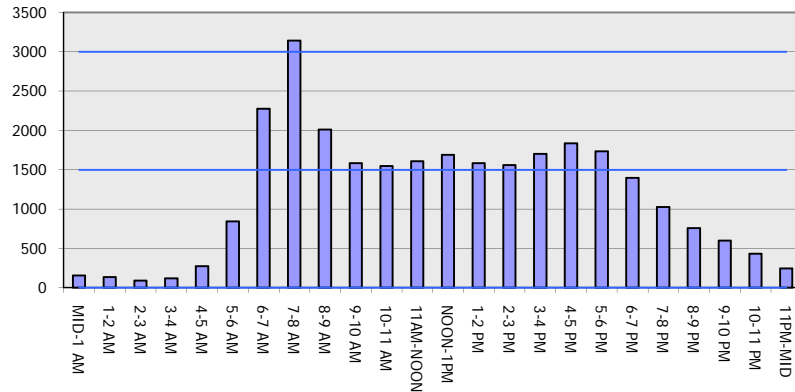
AUGUST

Analyzed for 2009
Construction Season

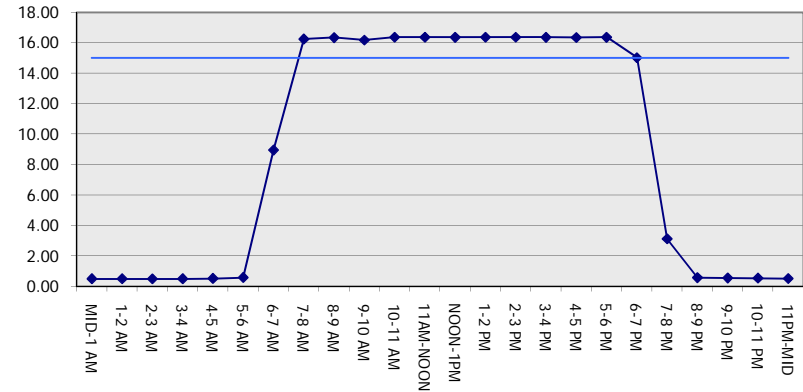
GRAPHICAL REPRESENTATION OF TRAFFIC MODEL INPUT AND OUTPUT

MON-THUR SOUTHBOUND DIRECTION

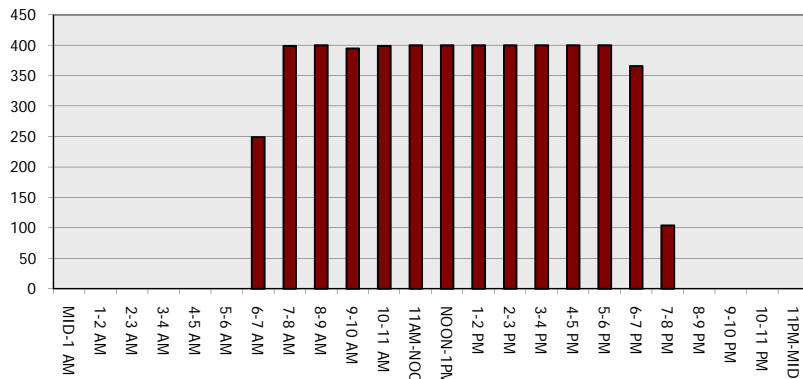
Main Route - Traffic Demand (Vehicles Per Hour)



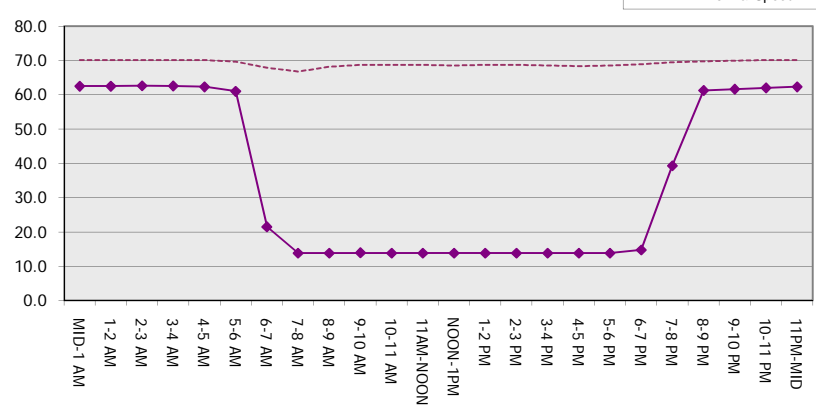
Main Route Average Delay Per Vehicle (Minutes)



Main Route - Average Queue Length (Vehicles)



Main Route - Average Speed (MPH)



USH 151: IH 39 TO STH 19 (DANE COUNTY) CONTINUOUS (24 HOUR) 2 LANE CLOSURE NO DIVERSION ROUTE (MAX QUEUE SEGMENT)	AUGUST
	Analyzed for 2009 Construction Season

SUMMARY OF TRAFFIC MODEL OUTPUT

MON-THUR NORTHBOUND DIRECTION

TIME OF DAY	FLOWS AND CAPACITY IN VEH/HR							AVERAGE SPEEDS IN MPH			
	MAIN ROUTE		SITE CAPA CITY	FLOW		AV.DEL PER VEH (MINS)	AVERAGE QUEUE (VEH)	MAIN ROUTE		SITE	
	DEMAND FLOW	PCT HEAVY		MAIN ROUTE	'DIVER TED'			WITHOUT WORK ZONE	WITH WORK ZONE		
MID-1 AM	231	0.0	1500	231	0	0.50	0	70.2	62.4	44.6	
1-2 AM	151	0.0	1500	151	0	0.49	0	70.2	62.5	44.9	
2-3 AM	117	0.0	1500	117	0	0.49	0	70.2	62.6	45.0	
3-4 AM	106	0.0	1500	106	0	0.49	0	70.2	62.6	45.1	
4-5 AM	136	0.0	1500	136	0	0.49	0	70.2	62.5	45.0	
5-6 AM	335	0.0	1500	335	0	0.51	0	70.2	62.2	44.2	
6-7 AM	801	0.0	1500	801	0	0.57	0	69.7	61.2	42.4	
7-8 AM	1157	0.0	1500	1157	0	0.65	0	69.3	59.7	39.9	
8-9 AM	1038	0.0	1500	1038	0	0.59	0	69.4	60.6	41.5	
9-10 AM	1052	0.0	1500	1052	0	0.59	0	69.4	60.6	41.5	
10-11 AM	1197	0.0	1500	1197	0	0.70	0	69.2	59.1	38.6	
11AM-NOON	1439	0.0	1499	1439	0	1.02	0	68.9	55.2	32.1	
NOON-1PM	1663	0.0	1499	1663	0	3.62	74	68.7	36.5	30.8	
1-2 PM	1666	0.0	1499	1666	0	9.97	238	68.7	20.0	30.8	
2-3 PM	1915	0.0	1499	1575	339	16.01+	391	68.4	14.0	30.8	
3-4 PM	2548	0.0	1500	1500	1048	16.30+	400	67.6	13.8	30.8	
4-5 PM	3179	0.0	1500	1500	1679	16.25+	400	66.8	13.8	30.8	
5-6 PM	3175	0.0	1500	1500	1675	16.25+	400	66.8	13.8	30.8	
6-7 PM	1953	0.0	1500	1500	453	16.34+	400	68.3	13.8	30.8	
7-8 PM	1481	0.0	1500	1453	28	16.00+	390	68.9	14.0	30.8	
8-9 PM	1356	0.0	1499	1356	0	12.27	296	69.1	17.2	30.8	
9-10 PM	1135	0.0	1499	1135	0	2.72	78	69.3	41.5	37.1	
10-11 PM	658	0.0	1500	658	0	0.55	0	69.9	61.5	42.9	
11PM-MID	448	0.0	1500	448	0	0.53	0	70.2	62.0	43.7	

+ INDICATES QUEUEING EXCEEDS USER-SPECIFIED MAXIMUM LIMIT

----- SITE BREAKDOWN DELAYS -----	
BREAKDOWN DURATION (MINS)	0
RANGE OF QUEUE DELAY - MIN (VEH-H) MAX	0.0
AV BREAKDOWNS PER DAY	0.00
AV QUEUE DELAY/DAY (VEH-H)	0.0
AV TOTAL DELAY/DAY (VEH-H)	0.0

----- SITE ACCIDENT DELAYS -----	
BREAKDOWN DURATION (MINS)	0
RANGE OF QUEUE DELAY - MIN (VEH-H) MAX	0
AV BREAKDOWNS PER DAY	0
AV QUEUE DELAY/DAY (VEH-H)	0
AV TOTAL DELAY/DAY (VEH-H)	0

AVERAGE ACCIDENT NUMBERS (PIA/DAY)	
MAIN ROUTE WITHOUT WORKS	0.0216
MAIN ROUTE WITH WORKS	0.0162
'DIVERSION'	0.0090

PIA: Personal Injury Accidents

ECONOMIC IMPACT ON ROAD USERS	
ROAD USER COSTS PER DAY	\$61,075
CONGESTED HOURS PER DAY*	6

*Delays Exceeding User-Specified Maximum

**USH 151: IH 39 TO STH 19 (DANE COUNTY)
CONTINUOUS (24 HOUR) 2 LANE CLOSURE
NO DIVERSION ROUTE (MAX QUEUE SEGMENT)**

AUGUST
Analyzed for 2009
Construction Season

GRAPHICAL REPRESENTATION OF TRAFFIC MODEL INPUT AND OUTPUT
MON-THUR NORTHBOUND DIRECTION

