

USH 151: IH 39 TO STH 19 (DANE COUNTY) CONTINUOUS (24 HOUR) CLOSURE NO DIVERSION ROUTE (MAX QUEUE SEGMENT)	AUGUST
	Analyzed for 2009 Construction Season

SUMMARY OF TRAFFIC MODEL OUTPUT

FRIDAY SOUTHBOUND DIRECTION

TIME OF DAY	FLOWS AND CAPACITY IN VEH/HR						AVERAGE SPEEDS IN MPH			
	MAIN ROUTE		SITE CAPA CITY	FLOW		AV.DEL PER VEH (MINS)	AVERAGE QUEUE (VEH)	MAIN ROUTE		SITE
	DEMAND FLOW	PCT HEAVY		MAIN ROUTE	'DIVER TED'			WITHOUT WORK ZONE	WITH WORK ZONE	
MID-1 AM	175	0.0	3000	175	0	0.36	0	70.2	64.4	49.7
1-2 AM	147	0.0	3000	147	0	0.36	0	70.2	64.4	49.7
2-3 AM	102	0.0	3000	102	0	0.36	0	70.2	64.4	49.7
3-4 AM	131	0.0	3000	131	0	0.36	0	70.2	64.4	49.7
4-5 AM	269	0.0	3000	269	0	0.36	0	70.2	64.4	49.7
5-6 AM	748	0.0	3000	748	0	0.35	0	69.8	64.1	49.7
6-7 AM	2011	0.0	3000	2011	0	0.33	0	68.2	63.1	49.7
7-8 AM	2864	0.0	3000	2864	0	0.64	0	67.2	58.3	39.4
8-9 AM	1945	0.0	3000	1945	0	0.34	0	68.3	63.2	49.7
9-10 AM	1646	0.0	3000	1646	0	0.34	0	68.7	63.4	49.7
10-11 AM	1682	0.0	3000	1682	0	0.34	0	68.6	63.4	49.7
11AM-NOON	1817	0.0	3000	1817	0	0.34	0	68.5	63.3	49.7
NOON-1PM	1871	0.0	3000	1871	0	0.34	0	68.4	63.2	49.7
1-2 PM	1803	0.0	3000	1803	0	0.34	0	68.5	63.3	49.7
2-3 PM	1843	0.0	3000	1843	0	0.34	0	68.4	63.3	49.7
3-4 PM	1831	0.0	3000	1831	0	0.34	0	68.4	63.3	49.7
4-5 PM	1921	0.0	3000	1921	0	0.34	0	68.4	63.2	49.7
5-6 PM	1896	0.0	3000	1896	0	0.34	0	68.4	63.2	49.7
6-7 PM	1676	0.0	3000	1676	0	0.34	0	68.6	63.4	49.7
7-8 PM	1290	0.0	3000	1290	0	0.35	0	69.1	63.7	49.7
8-9 PM	940	0.0	3000	940	0	0.35	0	69.6	64.0	49.7
9-10 PM	740	0.0	3000	740	0	0.35	0	69.8	64.1	49.7
10-11 PM	622	0.0	3000	622	0	0.36	0	70.0	64.3	49.7
11PM-MID	408	0.0	3000	408	0	0.36	0	70.2	64.4	49.7

----- SITE BREAKDOWN DELAYS -----

BREAKDOWN DURATION (MINS)	0
RANGE OF QUEUE DELAY - MIN (VEH-H) MAX	0.0
AV BREAKDOWNS PER DAY	0.00
AV QUEUE DELAY/DAY (VEH-H)	0.0
AV TOTAL DELAY/DAY (VEH-H)	0.0

----- SITE ACCIDENT DELAYS -----

BREAKDOWN DURATION (MINS)	0
RANGE OF QUEUE DELAY - MIN (VEH-H) MAX	0
AV BREAKDOWNS PER DAY	0
AV QUEUE DELAY/DAY (VEH-H)	0
AV TOTAL DELAY/DAY (VEH-H)	0

AVERAGE ACCIDENT NUMBERS (PIA/DAY)

MAIN ROUTE WITHOUT WORKS	0.0227
MAIN ROUTE WITH WORKS	0.0207
'DIVERSION'	0.0000

PIA: Personal Injury Accidents

IMPACTS ON ROAD USERS

ROAD USER COSTS PER DAY	\$2,289
CONGESTED HOURS PER DAY*	0

*Delays Exceeding User-Specified Maximum

**USH 151: IH 39 TO STH 19 (DANE COUNTY)
CONTINUOUS (24 HOUR) CLOSURE
NO DIVERSION ROUTE (MAX QUEUE SEGMENT)**

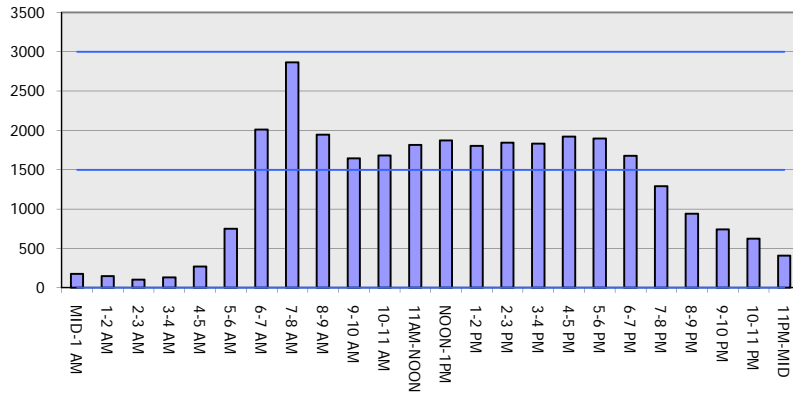
AUGUST

Analyzed for 2009
Construction Season

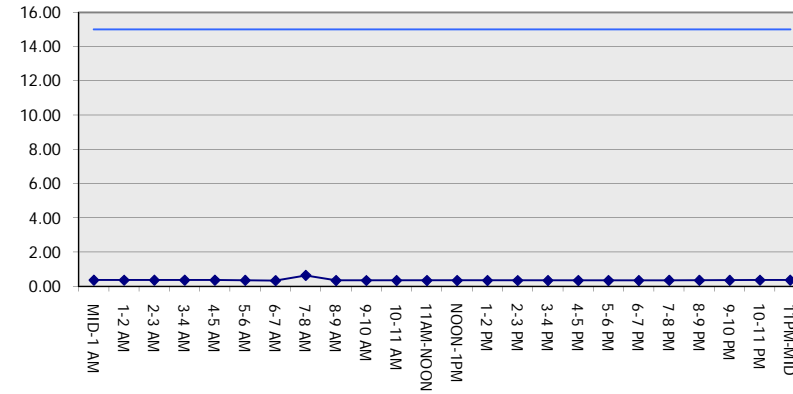
GRAPHICAL REPRESENTATION OF TRAFFIC MODEL INPUT AND OUTPUT

FRIDAY SOUTHBOUND DIRECTION

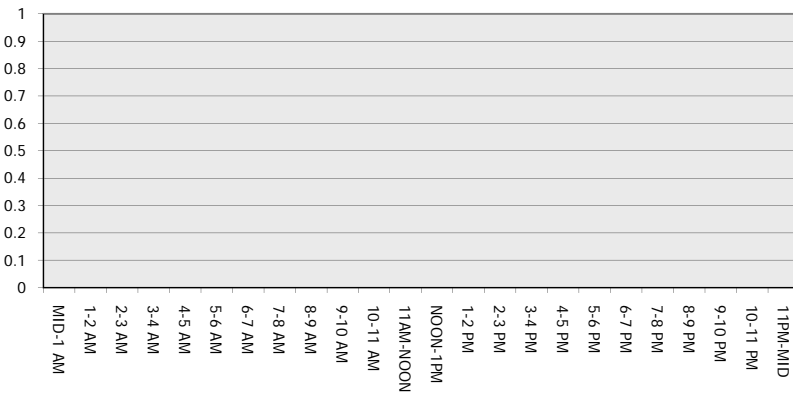
Main Route - Traffic Demand (Vehicles Per Hour)



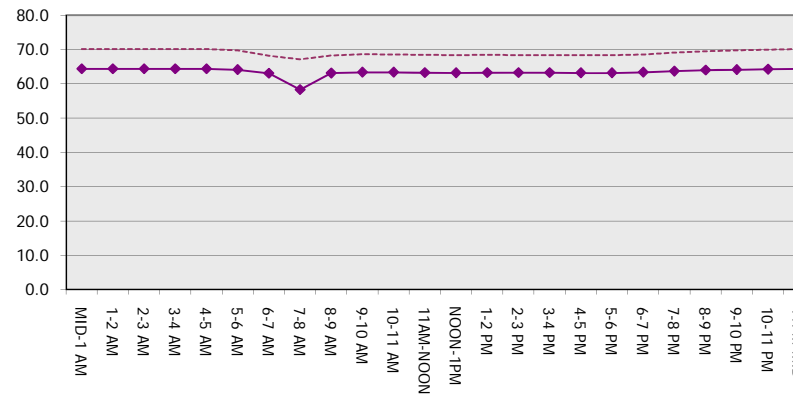
Main Route Average Delay Per Vehicle (Minutes)



Main Route - Average Queue Length (Vehicles)



Main Route - Average Speed (MPH)



USH 151: IH 39 TO STH 19 (DANE COUNTY) CONTINUOUS (24 HOUR) CLOSURE NO DIVERSION ROUTE (MAX QUEUE SEGMENT)	AUGUST
	Analyzed for 2009 Construction Season

SUMMARY OF TRAFFIC MODEL OUTPUT

FRIDAY NORTHBOUND DIRECTION

TIME OF DAY	FLOWS AND CAPACITY IN VEH/HR							AVERAGE SPEEDS IN MPH		
	MAIN ROUTE		SITE CAPA CITY	FLOW		AV.DEL PER VEH (MINS)	AVERAGE QUEUE (VEH)	MAIN ROUTE		SITE
	DEMAND FLOW	PCT HEAVY		MAIN ROUTE	'DIVER TED'			WITHOUT WORK ZONE	WITH WORK ZONE	
MID-1 AM	292	0.0	3000	292	0	0.36	0	70.2	64.4	49.7
1-2 AM	194	0.0	3000	194	0	0.36	0	70.2	64.4	49.7
2-3 AM	162	0.0	3000	162	0	0.36	0	70.2	64.4	49.7
3-4 AM	118	0.0	3000	118	0	0.36	0	70.2	64.4	49.7
4-5 AM	162	0.0	3000	162	0	0.36	0	70.2	64.4	49.7
5-6 AM	333	0.0	3000	333	0	0.36	0	70.2	64.4	49.7
6-7 AM	757	0.0	3000	757	0	0.35	0	69.8	64.1	49.7
7-8 AM	1107	0.0	3000	1107	0	0.35	0	69.4	63.8	49.7
8-9 AM	1023	0.0	3000	1023	0	0.35	0	69.5	64.0	49.7
9-10 AM	1127	0.0	3000	1127	0	0.35	0	69.3	63.8	49.7
10-11 AM	1335	0.0	3000	1335	0	0.35	0	69.1	63.7	49.7
11AM-NOON	1709	0.0	3000	1709	0	0.34	0	68.6	63.3	49.7
NOON-1PM	1996	0.0	3000	1996	0	0.33	0	68.2	63.2	49.7
1-2 PM	2109	0.0	3000	2109	0	0.33	0	68.1	63.0	49.7
2-3 PM	2294	0.0	3000	2294	0	0.33	0	67.9	62.9	49.7
3-4 PM	2805	0.0	2999	2805	0	0.60	0	67.3	58.8	40.6
4-5 PM	3106	0.0	2999	3106	0	1.54	47	66.9	49.0	37.3
5-6 PM	3000	0.0	3000	3000	0	3.25	138	67.0	37.8	37.3
6-7 PM	2064	0.0	3000	2064	0	0.44	7	68.2	61.5	49.7
7-8 PM	1608	0.0	3000	1608	0	0.34	0	68.7	63.5	49.7
8-9 PM	1436	0.0	3000	1436	0	0.34	0	68.9	63.6	49.7
9-10 PM	1256	0.0	3000	1256	0	0.35	0	69.2	63.8	49.7
10-11 PM	834	0.0	3000	834	0	0.35	0	69.7	64.1	49.7
11PM-MID	643	0.0	3000	643	0	0.36	0	69.9	64.3	49.7

----- SITE BREAKDOWN DELAYS -----	
BREAKDOWN DURATION (MINS)	0
RANGE OF QUEUE DELAY - MIN (VEH-H) MAX	0.0
AV BREAKDOWNS PER DAY	0.00
AV QUEUE DELAY/DAY (VEH-H)	0.0
AV TOTAL DELAY/DAY (VEH-H)	0.0

----- SITE ACCIDENT DELAYS -----	
BREAKDOWN DURATION (MINS)	0
RANGE OF QUEUE DELAY - MIN (VEH-H) MAX	0
AV BREAKDOWNS PER DAY	0
AV QUEUE DELAY/DAY (VEH-H)	0
AV TOTAL DELAY/DAY (VEH-H)	0

AVERAGE ACCIDENT NUMBERS (PIA/DAY)	
MAIN ROUTE WITHOUT WORKS	0.0235
MAIN ROUTE WITH WORKS	0.0214
'DIVERSION'	0.0000

PIA: Personal Injury Accidents

ECONOMIC IMPACT ON ROAD USERS	
ROAD USER COSTS PER DAY	\$4,915
CONGESTED HOURS PER DAY*	0

*Delays Exceeding User-Specified Maximum

**USH 151: IH 39 TO STH 19 (DANE COUNTY)
CONTINUOUS (24 HOUR) CLOSURE
NO DIVERSION ROUTE (MAX QUEUE SEGMENT)**

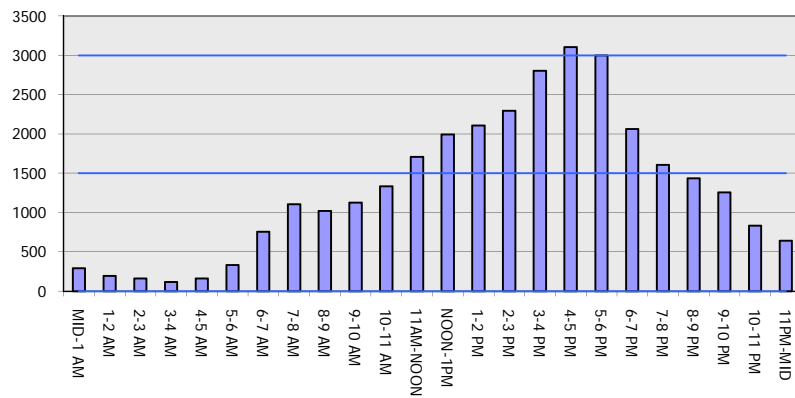
AUGUST

Analyzed for 2009
Construction Season

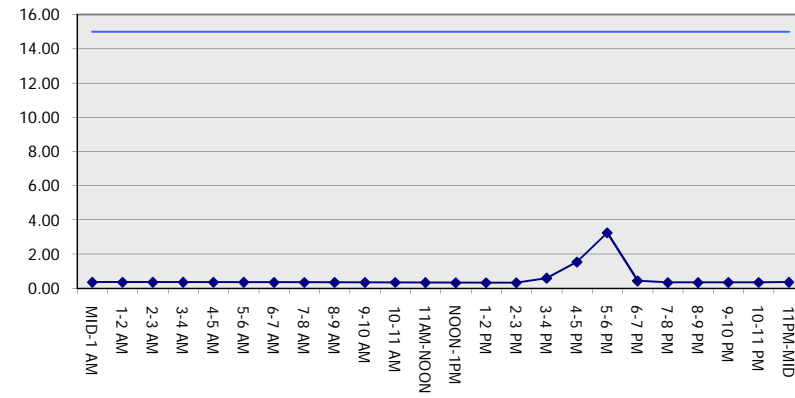
GRAPHICAL REPRESENTATION OF TRAFFIC MODEL INPUT AND OUTPUT

FRIDAY NORTHBOUND DIRECTION

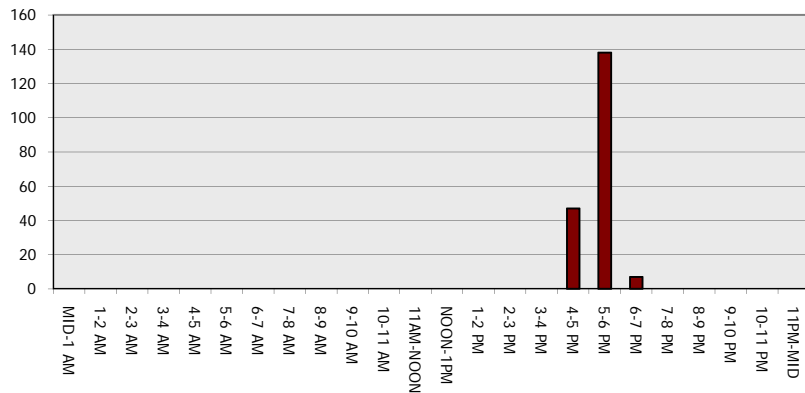
Main Route - Traffic Demand (Vehicles Per Hour)



Main Route Average Delay Per Vehicle (Minutes)



Main Route - Average Queue Length (Vehicles)



Main Route - Average Speed (MPH)

