

USH 12/14: GAMMON RD TO VERONA RD (DANE) CONTINUOUS (24 HOUR) CLOSURE NO DIVERSION ROUTE (MAX QUEUE METHOD)	OCTOBER
	Analyzed for 2009 Construction Season

SUMMARY OF TRAFFIC MODEL OUTPUT

MON-THUR WESTBOUND DIRECTION

TIME OF DAY	FLOWS AND CAPACITY IN VEH/HR							AVERAGE SPEEDS IN MPH			
	MAIN ROUTE		SITE CAPA CITY	FLOW		AV.DEL PER VEH (MINS)	AVERAGE QUEUE (VEH)	MAIN ROUTE		SITE	
	DEMAND FLOW	PCT HEAVY		MAIN ROUTE	'DIVER TED'			WITHOUT WORK ZONE	WITH WORK ZONE		
MID-1 AM	295	0.0	1500	295	0	0.36	0	60.2	53.3	44.3	
1-2 AM	174	0.0	1500	174	0	0.35	0	60.2	53.5	44.8	
2-3 AM	107	0.0	1500	107	0	0.34	0	60.2	53.7	45.1	
3-4 AM	83	0.0	1500	83	0	0.34	0	60.2	53.7	45.1	
4-5 AM	101	0.0	1500	101	0	0.34	0	60.2	53.7	45.1	
5-6 AM	221	0.0	1500	221	0	0.36	0	60.2	53.4	44.6	
6-7 AM	680	0.0	1500	680	0	0.41	0	60.2	52.5	42.8	
7-8 AM	2264	0.0	1499	2029	235	7.09+	228	60.2	17.7	30.8	
8-9 AM	4145	0.0	1500	1484	2661	15.30+	421	44.0	9.8	31.5	
9-10 AM	3436	0.0	1499	1467	1970	15.90+	419	51.3	9.8	30.9	
10-11 AM	2283	0.0	1499	1489	794	16.28+	414	60.2	9.9	30.8	
11AM-NOON	2151	0.0	1499	1495	656	16.24+	413	60.2	9.9	30.8	
NOON-1PM	2421	0.0	1499	1490	931	16.29+	414	60.2	9.9	30.8	
1-2 PM	2685	0.0	1499	1482	1203	16.28+	416	59.0	9.8	30.8	
2-3 PM	2586	0.0	1499	1493	1093	16.28+	415	60.0	9.9	30.8	
3-4 PM	2761	0.0	1499	1492	1269	16.24+	416	58.2	9.8	30.8	
4-5 PM	3164	0.0	1499	1499	1665	16.16+	421	54.1	9.8	30.8	
5-6 PM	3926	0.0	1500	1500	2426	15.60+	422	46.3	9.7	30.8	
6-7 PM	3876	0.0	1500	1500	2376	15.65+	422	46.8	9.7	30.8	
7-8 PM	2550	0.0	1500	1498	1052	16.31+	415	60.2	9.9	30.8	
8-9 PM	1663	0.0	1500	1488	175	16.17+	411	60.2	9.9	30.8	
9-10 PM	1290	0.0	1499	1290	0	12.63+	323	60.2	11.4	30.9	
10-11 PM	1005	0.0	1500	1005	0	1.53	47	60.2	38.9	39.6	
11PM-MID	607	0.0	1500	607	0	0.40	0	60.2	52.6	43.1	

+ INDICATES QUEUEING EXCEEDS USER-SPECIFIED MAXIMUM LIMIT

----- SITE BREAKDOWN DELAYS -----	
BREAKDOWN DURATION (MINS)	0
RANGE OF QUEUE DELAY - MIN (VEH-H) MAX	0.0
AV BREAKDOWNS PER DAY	0.00
AV QUEUE DELAY/DAY (VEH-H)	0.0
AV TOTAL DELAY/DAY (VEH-H)	0.0

----- SITE ACCIDENT DELAYS -----	
BREAKDOWN DURATION (MINS)	0
RANGE OF QUEUE DELAY - MIN (VEH-H) MAX	0
AV BREAKDOWNS PER DAY	0
AV QUEUE DELAY/DAY (VEH-H)	0
AV TOTAL DELAY/DAY (VEH-H)	0

AVERAGE ACCIDENT NUMBERS (PIA/DAY)	
MAIN ROUTE WITHOUT WORKS	0.0198
MAIN ROUTE WITH WORKS	0.0099
'DIVERSION'	0.0191
<small>PIA: Personal Injury Accidents</small>	
IMPACTS ON ROAD USERS	
ROAD USER COSTS PER DAY	#VALUE!
CONGESTED HOURS PER DAY*	15

*Delays Exceeding User-Specified Maximum

**USH 12/14: GAMMON RD TO VERONA RD (DANE)
CONTINUOUS (24 HOUR) CLOSURE
NO DIVERSION ROUTE (MAX QUEUE METHOD)**

OCTOBER

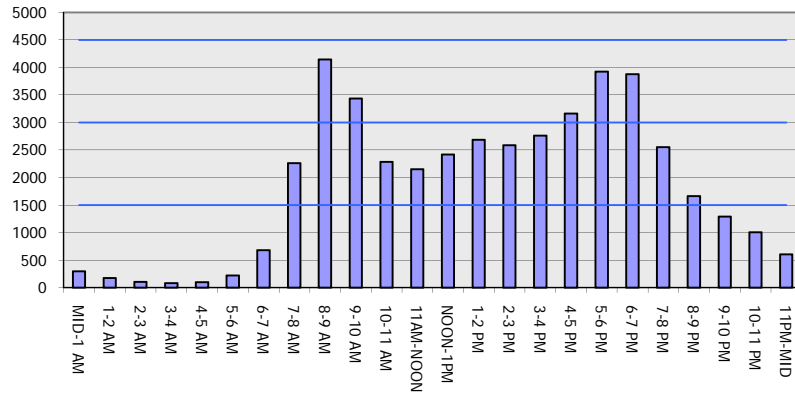
Analyzed for 2009
Construction Season

GRAPHICAL REPRESENTATION OF TRAFFIC MODEL INPUT AND OUTPUT

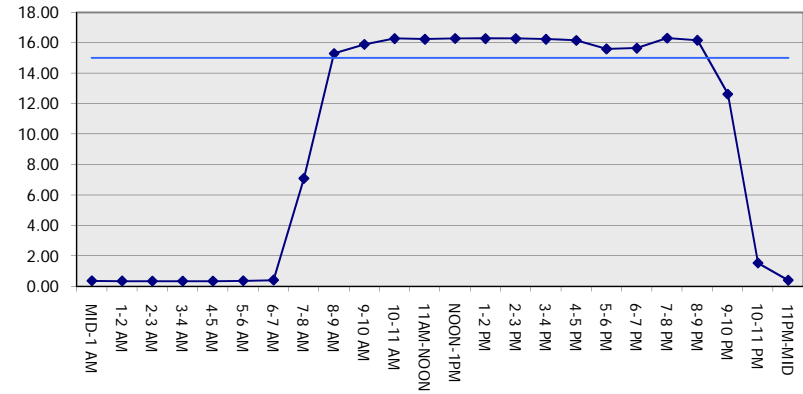
MON-THUR

WESTBOUND DIRECTION

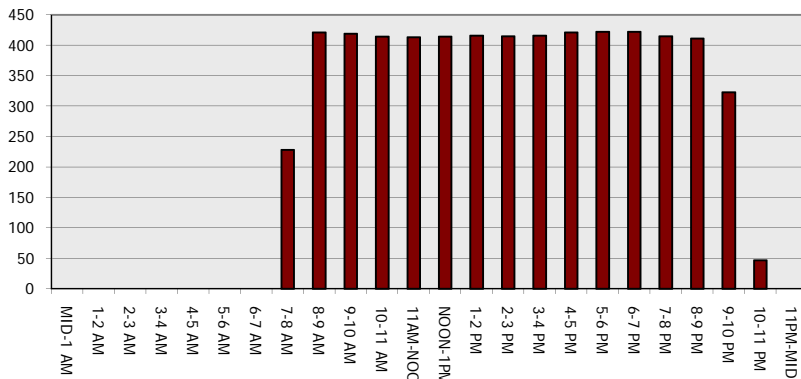
Main Route - Traffic Demand (Vehicles Per Hour)



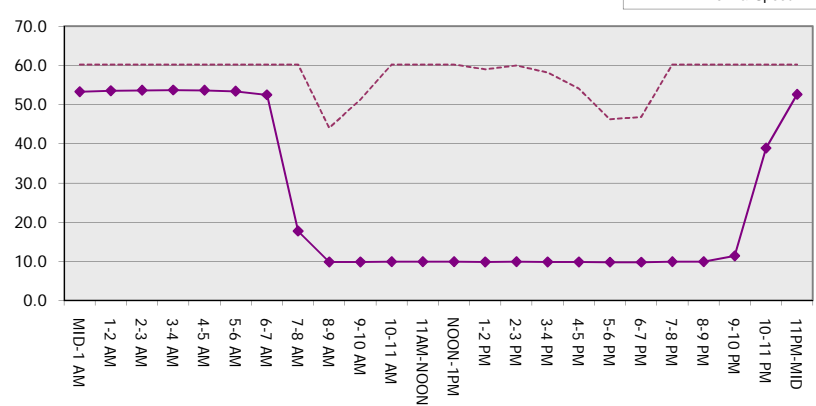
Main Route Average Delay Per Vehicle (Minutes)



Main Route - Average Queue Length (Vehicles)



Main Route - Average Speed (MPH)



USH 12/14: GAMMON RD TO VERONA RD (DANE) USH 12/14: GAMMON TO VERONA RD (DANE) CONTINUOUS (24 HOUR) CLOSURE	OCTOBER
	Analyzed for SURE Construction Season

--

TIME OF DAY	FLOWS AND CAPACITY IN VEH/HR							AVERAGE SPEEDS IN MPH		
	MAIN ROUTE		SITE CAPA	FLOW		AV.DEL PER VEH	AVERAGE QUEUE	MAIN ROUTE		#VALUE!
	DEMAND	MAIN PCT		*-- F MAIN	LOW --* 'DIVER			*--- MA WORK ZONE	IN ---* WORK ZONE	
#VALUE!	#VALUE!	CITY	#VALUE!	#VALUE!	#VALUE!	#VALUE!	#VALUE!	#VALUE!	#VALUE!	
MID-1 AM			1500							
1-2 AM	421	0.0	1500	421	0	0.38	0	60.2	53.0	43.8
2-3 AM	196	0.0	1500	196	0	0.35	0	60.2	53.5	44.7
3-4 AM	130	0.0	1500	130	0	0.34	0	60.2	53.6	45.0
4-5 AM	96	0.0	1500	96	0	0.34	0	60.2	53.7	45.1
5-6 AM	103	0.0	1500	103	0	0.34	0	60.2	53.7	45.1
6-7 AM	201	0.0	1500	201	0	0.35	0	60.2	53.5	44.6
7-8 AM	708	0.0	1500	708	0	0.42	0	60.2	52.4	42.7
8-9 AM	1959	0.0	1499	1959	0	3.93	137	60.2	25.0	30.8
9-10 AM	3661	0.0	1499	1500	2161	15.83+	422	49.0	9.7	30.8
10-11 AM	3039	0.0	1499	1479	1559	16.18+	419	55.4	9.8	30.8
11AM-NOON	2080	0.0	1499	1498	582	16.24+	413	60.2	9.9	30.8
NOON-1PM	2063	0.0	1499	1498	565	16.24+	413	60.2	9.9	30.8
1-2 PM	2513	0.0	1499	1496	1017	16.27+	414	60.2	9.9	30.8
2-3 PM	2650	0.0	1499	1493	1158	16.25+	415	59.4	9.9	30.8
3-4 PM	2549	0.0	1500	1499	1050	16.26+	414	60.2	9.9	30.8
4-5 PM	2791	0.0	1499	1497	1294	16.23+	416	57.9	9.8	30.8
5-6 PM	3445	0.0	1499	1500	1945	16.00+	422	51.2	9.7	30.8
6-7 PM	4178	0.0	1500	1500	2678	15.35+	422	43.7	9.7	30.8
7-8 PM	3738	0.0	1500	1500	2238	15.77+	422	48.2	9.7	30.8
8-9 PM	2497	0.0	1500	1499	998	16.29+	415	60.2	9.9	30.8
9-10 PM	1758	0.0	1500	1500	258	16.22+	413	60.2	9.9	30.8
10-11 PM	1428	0.0	1499	1417	11	15.41+	391	60.2	10.1	30.8
11PM-MID	1125	0.0	1499	1125	0	5.07	171	60.2	21.4	35.1

+ INDICATES QUEUEING EXCEEDS USER-SPECIFIED MAXIMUM LIMIT

	#VALUE!
BREAKDOWN DURATION (MINS)	0.0
RANGE OF QUEUE DELAY - MIN	0.0
	#VALUE!
AV BREAKDOWNS PER DAY	0.0
AV QUEUE DELAY/DAY (VEH-H)	0.0

	#VALUE!
BREAKDOWN DURATION (MINS)	0
RANGE OF QUEUE DELAY - MIN	0
	#VALUE!
AV BREAKDOWNS PER DAY	0
AV QUEUE DELAY/DAY (VEH-H)	0

	#VALUE!
	#VALUE!
MAIN ROUTE WITH WORKS	0.0101
PIA: Personal Injury Accidents	
ECONOMIC IMPACT ON ROAD USERS	
ROAD USER COSTS PER DAY	#N/A
CONGESTED HOURS PER DAY*	14

*Delays Exceeding User-Specified Maximum

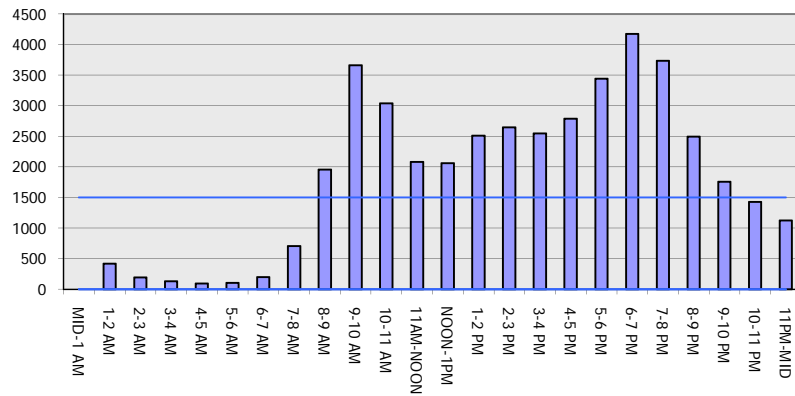
USH 12/14: GAMMON RD TO VERONA RD (DANE)
USH 12/14: GAMMON TO VERONA RD (DANE)
CONTINUOUS (24 HOUR) CLOSURE

OCTOBER

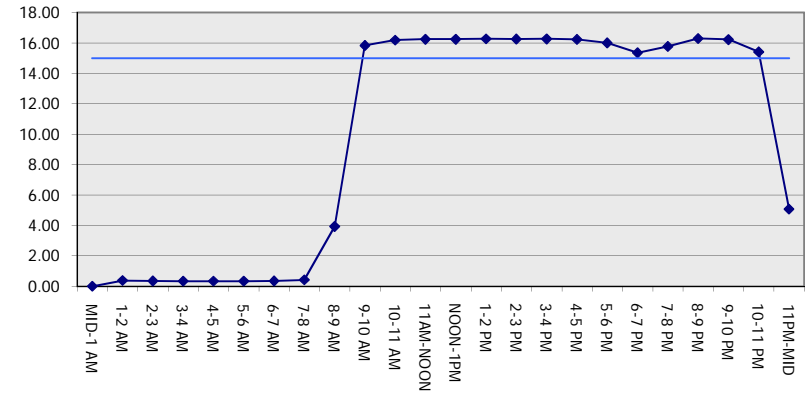
Analyzed for SURE
 Construction Season

GRAPHICAL REPRESENTATION OF TRAFFIC MODEL INPUT AND OUTPUT

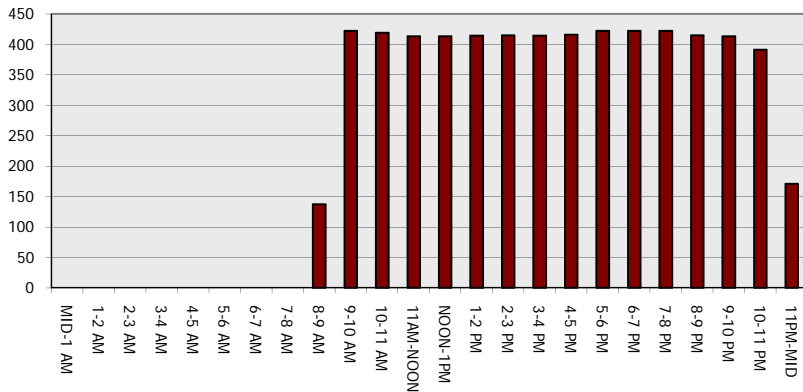
Main Route - Traffic Demand (Vehicles Per Hour)



Main Route Average Delay Per Vehicle (Minutes)



Main Route - Average Queue Length (Vehicles)



Main Route - Average Speed (MPH)

