

USH 12/14: OLD SAUK RD TO GAMMON RD (DANE) CONTINUOUS (24 HOUR) CLOSURE NO DIVERSION ROUTE (MAX QUEUE METHOD)	OCTOBER
	Analyzed for 2009 Construction Season

SUMMARY OF TRAFFIC MODEL OUTPUT

FRIDAY WESTBOUND DIRECTION

TIME OF DAY	FLOWS AND CAPACITY IN VEH/HR						AVERAGE SPEEDS IN MPH				
	MAIN ROUTE		SITE CAPA CITY	FLOW		AV.DEL PER VEH (MINS)	AVERAGE QUEUE (VEH)	MAIN ROUTE		SITE	
	DEMAND FLOW	PCT HEAVY		MAIN ROUTE	'DIVER TED'			WITHOUT WORK ZONE	WITH WORK ZONE		
MID-1 AM	301	0.0	1500	301	0	0.37	0	60.2	51.6	44.3	
1-2 AM	175	0.0	1500	175	0	0.35	0	60.2	51.9	44.8	
2-3 AM	121	0.0	1500	121	0	0.34	0	60.2	52.0	45.0	
3-4 AM	79	0.0	1500	79	0	0.34	0	60.2	52.2	45.1	
4-5 AM	98	0.0	1500	98	0	0.34	0	60.2	52.1	45.1	
5-6 AM	164	0.0	1500	164	0	0.35	0	60.2	52.0	44.8	
6-7 AM	502	0.0	1500	502	0	0.39	0	60.2	51.1	43.5	
7-8 AM	1602	0.0	1499	1602	0	1.89	52	60.2	32.4	33.3	
8-9 AM	3028	0.0	1499	1740	1288	16.07+	418	55.5	9.1	30.8	
9-10 AM	2486	0.0	1500	1491	995	16.74+	427	60.2	8.9	30.8	
10-11 AM	1828	0.0	1500	1498	330	16.64+	424	60.2	8.9	30.8	
11AM-NOON	1876	0.0	1499	1498	378	16.65+	424	60.2	8.9	30.8	
NOON-1PM	2120	0.0	1499	1499	622	16.67+	425	60.2	8.9	30.8	
1-2 PM	2305	0.0	1499	1499	806	16.69+	425	60.2	8.9	30.8	
2-3 PM	2277	0.0	1499	1499	778	16.68+	425	60.2	8.9	30.8	
3-4 PM	2461	0.0	1499	1499	962	16.70+	426	60.2	8.9	30.8	
4-5 PM	2714	0.0	1499	1499	1215	16.74+	429	58.7	8.9	30.8	
5-6 PM	3079	0.0	1499	1508	1570	16.90+	439	55.0	8.8	30.8	
6-7 PM	2953	0.0	1500	1496	1457	16.86+	436	56.3	8.9	30.8	
7-8 PM	2071	0.0	1500	1499	572	16.67+	425	60.2	8.9	30.8	
8-9 PM	1476	0.0	1500	1429	47	16.12+	410	60.2	9.1	30.8	
9-10 PM	1140	0.0	1499	1140	0	6.69	197	60.2	15.6	33.9	
10-11 PM	1008	0.0	1500	1008	0	0.45	0	60.2	49.9	41.7	
11PM-MID	723	0.0	1500	723	0	0.42	0	60.2	50.6	42.7	

+ INDICATES QUEUEING EXCEEDS USER-SPECIFIED MAXIMUM LIMIT

----- SITE BREAKDOWN DELAYS -----	
BREAKDOWN DURATION (MINS)	0
RANGE OF QUEUE DELAY - MIN (VEH-H) MAX	0.0
AV BREAKDOWNS PER DAY	0.00
AV QUEUE DELAY/DAY (VEH-H)	0.0
AV TOTAL DELAY/DAY (VEH-H)	0.0

----- SITE ACCIDENT DELAYS -----	
BREAKDOWN DURATION (MINS)	0
RANGE OF QUEUE DELAY - MIN (VEH-H) MAX	0
AV BREAKDOWNS PER DAY	0
AV QUEUE DELAY/DAY (VEH-H)	0
AV TOTAL DELAY/DAY (VEH-H)	0

AVERAGE ACCIDENT NUMBERS (PIA/DAY)	
MAIN ROUTE WITHOUT WORKS	0.0128
MAIN ROUTE WITH WORKS	0.0073
'DIVERSION'	0.0089
<small>PIA: Personal Injury Accidents</small>	
IMPACTS ON ROAD USERS	
ROAD USER COSTS PER DAY	\$119,636
CONGESTED HOURS PER DAY*	13

*Delays Exceeding User-Specified Maximum

**USH 12/14: OLD SAUK RD TO GAMMON RD (DANE)
CONTINUOUS (24 HOUR) CLOSURE
NO DIVERSION ROUTE (MAX QUEUE METHOD)**

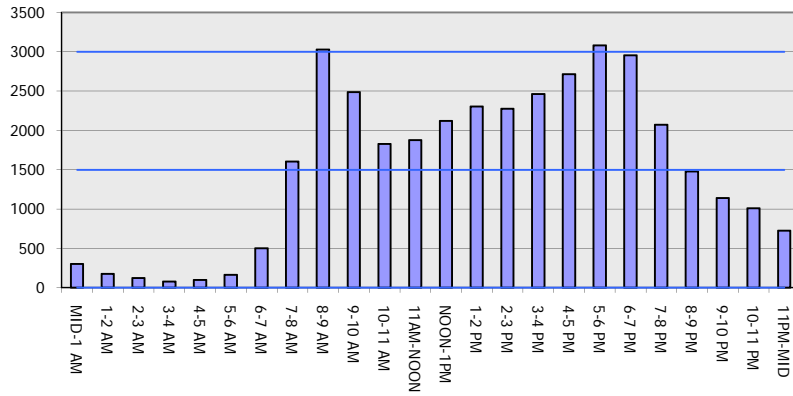
OCTOBER

Analyzed for 2009
Construction Season

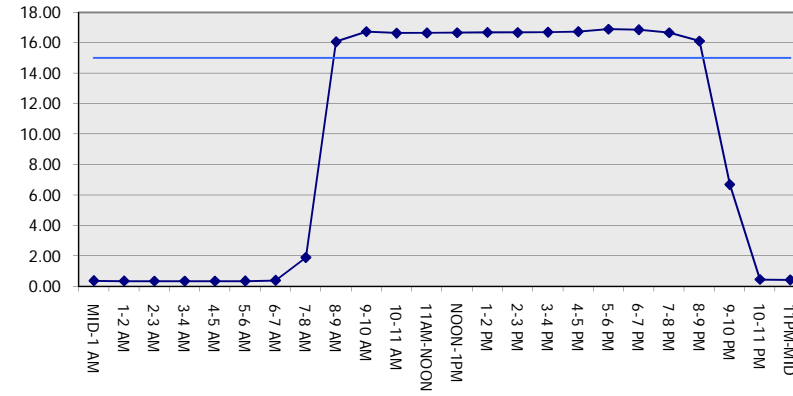
GRAPHICAL REPRESENTATION OF TRAFFIC MODEL INPUT AND OUTPUT

FRIDAY WESTBOUND DIRECTION

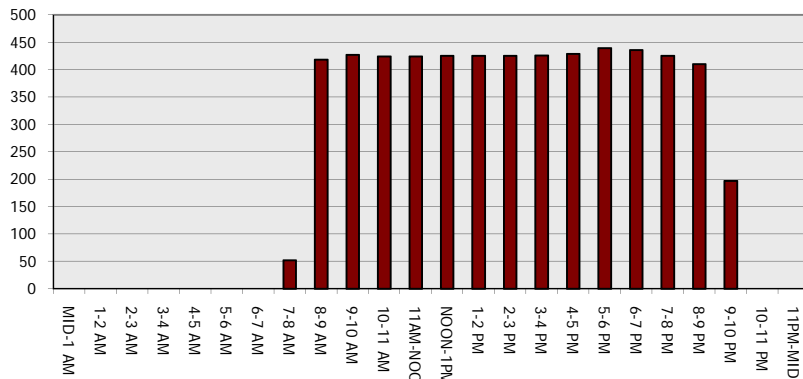
Main Route - Traffic Demand (Vehicles Per Hour)



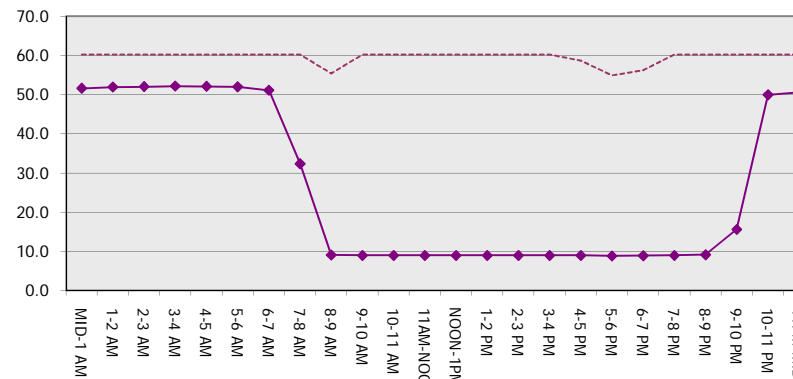
Main Route Average Delay Per Vehicle (Minutes)



Main Route - Average Queue Length (Vehicles)



Main Route - Average Speed (MPH)



USH 12/14: OLD SAUK RD TO GAMMON RD (DANE) CONTINUOUS (24 HOUR) CLOSURE NO DIVERSION ROUTE (MAX QUEUE METHOD)	OCTOBER
	Analyzed for 2009 Construction Season

SUMMARY OF TRAFFIC MODEL OUTPUT

FRIDAY EASTBOUND DIRECTION

TIME OF DAY	FLOWS AND CAPACITY IN VEH/HR							AVERAGE SPEEDS IN MPH			
	MAIN ROUTE		SITE CAPA CITY	FLOW		AV.DEL PER VEH (MINS)	AVERAGE QUEUE (VEH)	MAIN ROUTE		SITE	
	DEMAND FLOW	PCT HEAVY		MAIN ROUTE	'DIVER TED'			WITHOUT WORK ZONE	WITH WORK ZONE		
MID-1 AM	426	0.0	1500	426	0	0.38	0	60.2	51.3	43.8	
1-2 AM	213	0.0	1500	213	0	0.35	0	60.2	51.9	44.6	
2-3 AM	126	0.0	1500	126	0	0.34	0	60.2	52.0	45.0	
3-4 AM	86	0.0	1500	86	0	0.34	0	60.2	52.2	45.1	
4-5 AM	93	0.0	1500	93	0	0.34	0	60.2	52.2	45.1	
5-6 AM	149	0.0	1500	149	0	0.35	0	60.2	52.0	44.9	
6-7 AM	499	0.0	1500	499	0	0.39	0	60.2	51.1	43.5	
7-8 AM	1391	0.0	1499	1391	0	1.17	18	60.2	39.3	35.7	
8-9 AM	2529	0.0	1500	1927	602	13.96+	369	60.2	9.9	30.8	
9-10 AM	2224	0.0	1499	1475	749	16.69+	426	60.2	8.9	30.8	
10-11 AM	1687	0.0	1499	1447	240	16.46+	419	60.2	9.0	30.8	
11AM-NOON	1780	0.0	1500	1500	279	16.64+	424	60.2	8.9	30.8	
NOON-1PM	2117	0.0	1499	1501	617	16.67+	425	60.2	8.9	30.8	
1-2 PM	2321	0.0	1500	1501	821	16.69+	425	60.2	8.9	30.8	
2-3 PM	2310	0.0	1500	1500	809	16.69+	425	60.2	8.9	30.8	
3-4 PM	2413	0.0	1500	1500	912	16.70+	426	60.2	8.9	30.8	
4-5 PM	2767	0.0	1500	1507	1260	16.75+	430	60.2	8.9	30.8	
5-6 PM	3078	0.0	1499	1508	1570	16.90+	439	55.0	8.8	30.8	
6-7 PM	2650	0.0	1500	1495	1155	16.76+	428	59.4	8.9	30.8	
7-8 PM	1980	0.0	1500	1499	482	16.66+	425	60.2	8.9	30.8	
8-9 PM	1447	0.0	1499	1416	31	15.91+	405	60.2	9.1	30.8	
9-10 PM	1126	0.0	1499	1126	0	5.24	174	60.2	18.4	34.8	
10-11 PM	1037	0.0	1500	1037	0	0.46	0	60.2	49.9	41.5	
11PM-MID	780	0.0	1500	780	0	0.42	0	60.2	50.4	42.5	

+ INDICATES QUEUEING EXCEEDS USER-SPECIFIED MAXIMUM LIMIT

----- SITE BREAKDOWN DELAYS -----	
BREAKDOWN DURATION (MINS)	0
RANGE OF QUEUE DELAY - MIN (VEH-H) MAX	0.0
AV BREAKDOWNS PER DAY	0.00
AV QUEUE DELAY/DAY (VEH-H)	0.0
AV TOTAL DELAY/DAY (VEH-H)	0.0

----- SITE ACCIDENT DELAYS -----	
BREAKDOWN DURATION (MINS)	0
RANGE OF QUEUE DELAY - MIN (VEH-H) MAX	0
AV BREAKDOWNS PER DAY	0
AV QUEUE DELAY/DAY (VEH-H)	0
AV TOTAL DELAY/DAY (VEH-H)	0

AVERAGE ACCIDENT NUMBERS (PIA/DAY)	
MAIN ROUTE WITHOUT WORKS	0.0123
MAIN ROUTE WITH WORKS	0.0073
'DIVERSION'	0.0077

PIA: Personal Injury Accidents

ECONOMIC IMPACT ON ROAD USERS	
ROAD USER COSTS PER DAY	\$112,322
CONGESTED HOURS PER DAY*	13

*Delays Exceeding User-Specified Maximum

**USH 12/14: OLD SAUK RD TO GAMMON RD (DANE)
CONTINUOUS (24 HOUR) CLOSURE
NO DIVERSION ROUTE (MAX QUEUE METHOD)**

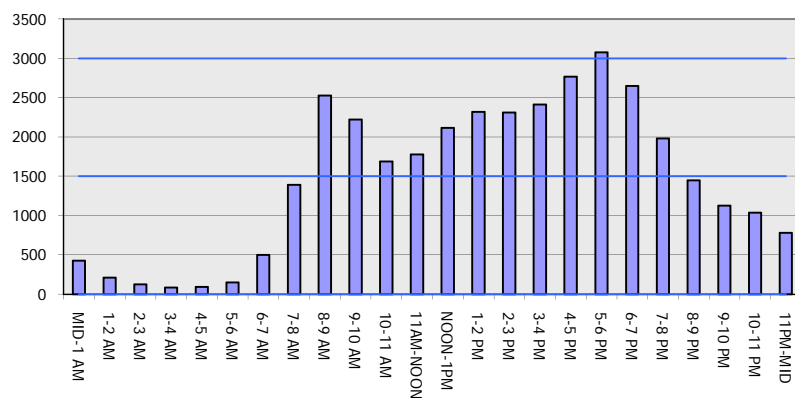
OCTOBER

Analyzed for 2009
Construction Season

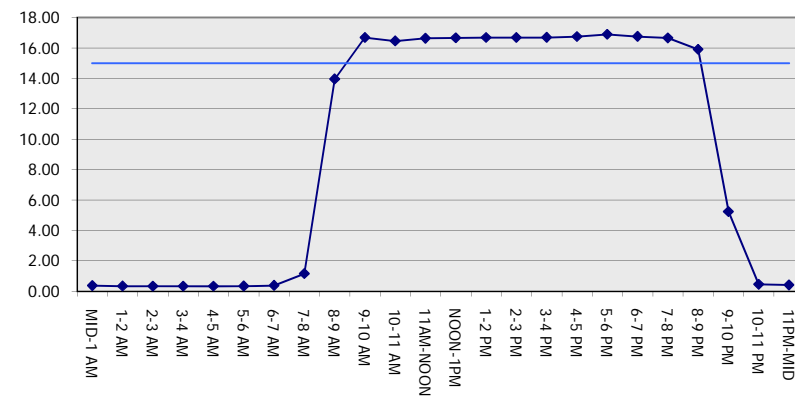
GRAPHICAL REPRESENTATION OF TRAFFIC MODEL INPUT AND OUTPUT

FRIDAY EASTBOUND DIRECTION

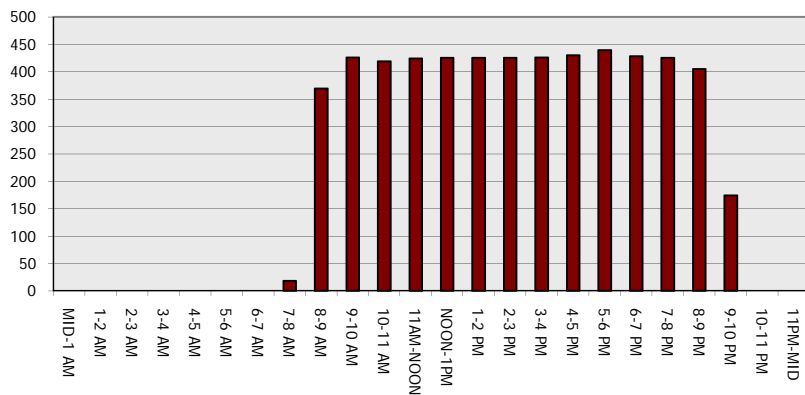
Main Route - Traffic Demand (Vehicles Per Hour)



Main Route Average Delay Per Vehicle (Minutes)



Main Route - Average Queue Length (Vehicles)



Main Route - Average Speed (MPH)

