

**IH 39/90: BELTLINE TO STH 73 (DANE COUNTY)
CONTINUOUS (24 HOUR) CLOSURE
DIVERSION ROUTE: STH 73 - USH 12**

MAY
Analyzed for 2009
Construction Season

SUMMARY OF TRAFFIC MODEL OUTPUT
SATURDAY WESTBOUND DIRECTION

TIME OF DAY	FLOWS AND CAPACITY IN VEH/HR								AVERAGE SPEEDS IN MPH						
	MAIN ROUTE		ALTERNATE ROUTE		SITE CAPA CITY	FLOW MAIN ROUTE	FLOW DIVER -TING	TOTAL DIVN FLOW	AV.DEL PER VEH (MINS)	AVERAGE QUEUE (VEH)	MAIN ROUTE		ALTERNATE ROUTE		
	DEMAND FLOW	PCT HEAVY	NORMAL FLOW	PCT HEAVY							WITHOUT WORK ZN	WITH WORK ZN	SITE	WITHOUT WORK ZN	WITH WORK ZN
MID-1 AM	521	0.0	93	0.0	1500	521	0	93	0.47	0	65.4	63.6	43.4	38.6	38.6
1-2 AM	387	0.0	69	0.0	1500	387	0	69	0.46	0	65.6	63.8	44.0	38.9	38.9
2-3 AM	361	0.0	65	0.0	1500	361	0	65	0.46	0	65.7	63.9	44.0	38.9	38.9
3-4 AM	317	0.0	57	0.0	1500	317	0	57	0.45	0	65.8	64.0	44.2	39.1	39.1
4-5 AM	412	0.0	74	0.0	1500	412	0	74	0.46	0	65.6	63.8	43.8	38.8	38.8
5-6 AM	678	0.0	121	0.0	1500	678	0	121	0.49	0	65.1	63.2	42.8	38.3	38.3
6-7 AM	1061	0.0	190	0.0	1500	1061	0	190	0.52	0	64.4	62.4	41.5	37.4	37.4
7-8 AM	1395	0.0	250	0.0	1499	1395	0	250	0.89	0	63.8	60.6	33.2	36.6	36.6
8-9 AM	1752	0.0	314	0.0	1499	1752	0	314	4.63	106	63.1	49.6	30.8	35.8	35.8
9-10 AM	2018	0.0	361	0.0	1500	1938	80	441	18.16	484	62.6	30.4	30.8	35.3	34.3
10-11 AM	2190	0.0	392	0.0	1499	1663	528	920	29.79	785	62.3	22.9	30.8	34.9	28.3
11A-NOON	2124	0.0	381	0.0	1499	1477	647	1028	32.16	848	62.4	21.7	30.8	35.0	27.0
NOON-1PM	1925	0.0	345	0.0	1499	1385	540	885	29.22	767	62.8	23.2	30.8	35.5	28.8
1-2 PM	1899	0.0	340	0.0	1499	1474	425	765	26.94	704	62.8	24.4	30.8	35.5	30.2
2-3 PM	1761	0.0	315	0.0	1499	1426	335	650	25.02	651	63.1	25.5	30.8	35.8	31.7
3-4 PM	1617	0.0	290	0.0	1499	1435	181	471	22.34	577	63.4	27.3	30.8	36.1	33.9
4-5 PM	1611	0.0	289	0.0	1500	1493	119	408	21.45	552	63.4	27.9	30.8	36.1	34.7
5-6 PM	1424	0.0	255	0.0	1499	1398	26	282	19.41	496	63.7	29.6	30.8	36.6	36.3
6-7 PM	1238	0.0	222	0.0	1499	1238	0	222	12.77	322	64.1	36.3	31.1	37.0	37.0
7-8 PM	1038	0.0	186	0.0	1500	1038	0	186	1.82	38	64.5	58.1	40.0	37.4	37.4
8-9 PM	912	0.0	163	0.0	1500	912	0	163	0.51	0	64.7	62.8	42.0	37.7	37.7
9-10 PM	767	0.0	137	0.0	1500	767	0	137	0.50	0	65.0	63.0	42.5	38.1	38.1
10-11 PM	542	0.0	97	0.0	1500	542	0	97	0.48	0	65.4	63.5	43.3	38.6	38.6
11PM-MID	420	0.0	75	0.0	1500	420	0	75	0.46	0	65.6	63.8	43.8	38.8	38.8

----- SITE BREAKDOWN DELAYS -----

BREAKDOWN DURATION (MINS)	0
RANGE OF QUEUE DELAY - MIN (VEH-H) MAX	0.0
RANGE OF DIVN DELAY - MIN (VEH-H) MAX	0.0
AV BREAKDOWNS PER DAY	0.00
AV QUEUE DELAY/DAY (VEH-H)	0.0
AV DIVN DELAY/DAY (VEH-H)	0.0
AV TOTAL DELAY/DAY (VEH-H)	0.0

----- SITE ACCIDENT DELAYS -----

ACCIDENT DURATION (MINS)	0
RANGE OF QUEUE DELAY - MIN (VEH-H) MAX	0.0
RANGE OF DIVN DELAY - MIN (VEH-H) MAX	0.0
AV ACCIDENTS PER DAY	0.00
AV QUEUE DELAY/DAY (VEH-H)	0.0
AV DIVN DELAY/DAY (VEH-H)	0.0
AV TOTAL DELAY/DAY (VEH-H)	0.0

AVERAGE ACCIDENT NUMBERS (PIA/DAY)

MAIN ROUTE WITHOUT WORKS	0.0808
MAIN ROUTE WITH WORKS	0.0709
DIVERSION	0.2077

PIA: Personal Injury Accidents

IMPACTS ON ROAD USERS

ROAD USER COSTS PER DAY (DOLLARS)	\$131,139
CONGESTED HOURS PER DAY*	9

*Delays Exceeding 15 Minutes

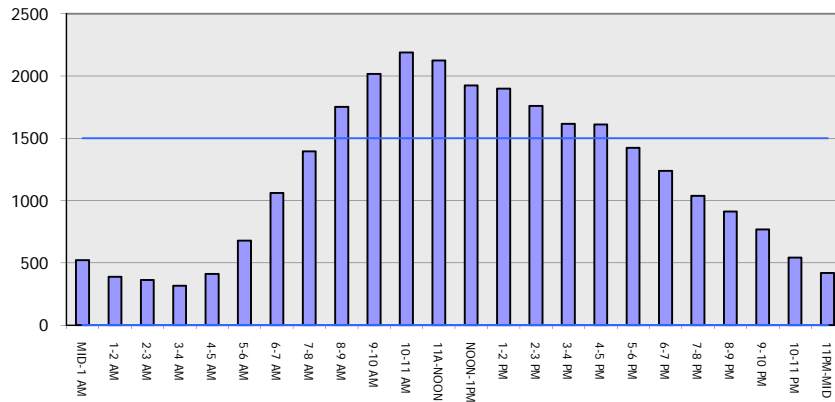
IH 39/90: BELTLINE TO STH 73 (DANE COUNTY)
CONTINUOUS (24 HOUR) CLOSURE
DIVERSION ROUTE: STH 73 - USH 12

MAY
 Analyzed for 2009
 Construction Season

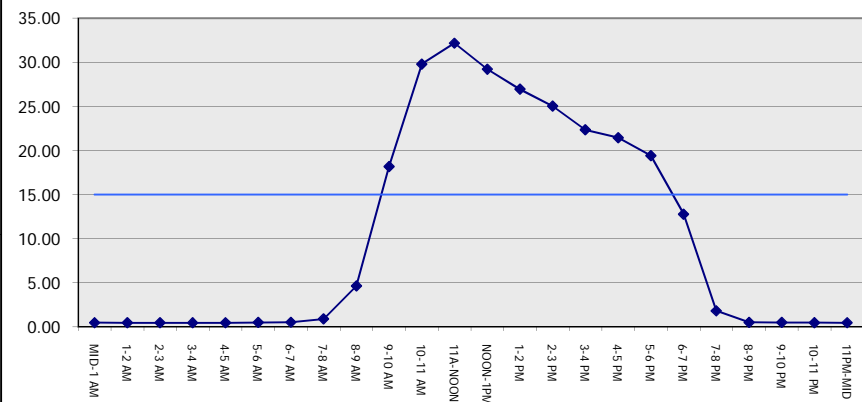
GRAPHICAL REPRESENTATION OF TRAFFIC MODEL INPUT AND OUTPUT

SATURDAY WESTBOUND DIRECTION

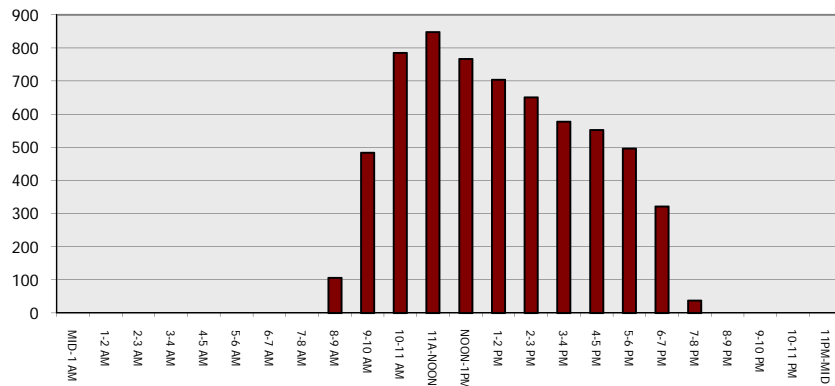
Main Route - Traffic Demand (Vehicles Per Hour)



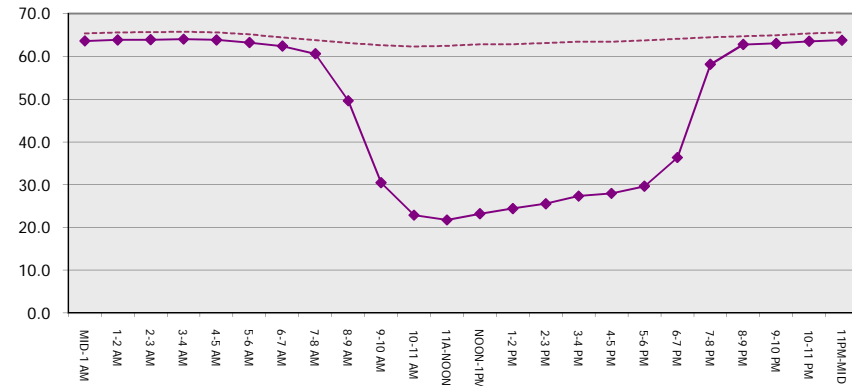
Main Route Average Delay Per Vehicle (Minutes)



Main Route - Average Queue Length (Vehicles)



Main Route - Average Speed (MPH)



IH 39/90: BELTLINE TO STH 73 (DANE COUNTY) CONTINUOUS (24 HOUR) CLOSURE DIVERSION ROUTE: STH 73 - USH 12	MAY
	Analyzed for 2009 Construction Season

SUMMARY OF TRAFFIC MODEL OUTPUT

SATURDAY EASTBOUND DIRECTION

TIME OF DAY	FLOWS AND CAPACITY IN VEH/HR								AVERAGE SPEEDS IN MPH						
	MAIN		DIVERSION		SITE CAPA CITY	FLOW MAIN ROUTE	FLOW DIVER -TING	TOTAL DIVN FLOW	AV.DEL PER VEH (MINS)	AVERAGE QUEUE (VEH)	MAIN ROUTE		SITE	ALTERNATE ROUTE	
	DEMAND FLOW	PCT HEAVY	NORMAL FLOW	PCT HEAVY							WITHOUT WORK ZN	WITH WORK ZN		WITHOUT WORK ZN	WITH WORK ZN
MID-1 AM	446	0.0	80	0.0	1500	446	0	80	0.47	0	65.6	63.7	43.7	38.8	38.8
1-2 AM	325	0.0	59	0.0	1500	325	0	59	0.45	0	65.8	64.0	44.2	39.0	39.0
2-3 AM	313	0.0	57	0.0	1500	313	0	57	0.45	0	65.8	64.0	44.2	39.1	39.1
3-4 AM	331	0.0	60	0.0	1500	331	0	60	0.45	0	65.8	64.0	44.2	39.0	39.0
4-5 AM	336	0.0	60	0.0	1500	336	0	60	0.46	0	65.8	64.0	44.2	39.0	39.0
5-6 AM	380	0.0	68	0.0	1500	380	0	68	0.46	0	65.7	63.9	44.0	38.9	38.9
6-7 AM	583	0.0	105	0.0	1500	583	0	105	0.48	0	65.3	63.5	43.2	38.4	38.4
7-8 AM	911	0.0	163	0.0	1500	911	0	163	0.51	0	64.7	62.8	42.0	37.7	37.7
8-9 AM	1244	0.0	223	0.0	1499	1244	0	223	0.69	0	64.1	61.5	37.2	36.9	36.9
9-10 AM	1505	0.0	269	0.0	1499	1505	0	269	1.23	6	63.6	59.2	31.2	36.4	36.4
10-11 AM	1637	0.0	293	0.0	1500	1637	0	293	4.18	88	63.3	50.8	30.8	36.1	36.1
11A-NOON	1723	0.0	309	0.0	1500	1723	0	309	10.91	273	63.2	38.4	30.8	35.9	35.9
NOON-1PM	1686	0.0	301	0.0	1499	1669	17	318	18.63	479	63.2	30.2	30.8	36.0	35.8
1-2 PM	1689	0.0	302	0.0	1499	1526	163	465	22.22	574	63.2	27.4	30.8	36.0	34.0
2-3 PM	1651	0.0	296	0.0	1499	1484	167	463	22.21	573	63.3	27.4	30.8	36.1	34.0
3-4 PM	1602	0.0	287	0.0	1499	1479	123	410	21.48	553	63.4	27.9	30.8	36.2	34.7
4-5 PM	1592	0.0	285	0.0	1500	1490	102	386	21.17	544	63.4	28.2	30.8	36.2	35.0
5-6 PM	1397	0.0	250	0.0	1499	1380	16	267	18.84	480	63.8	30.1	30.8	36.6	36.5
6-7 PM	1235	0.0	221	0.0	1499	1235	0	221	11.63	292	64.1	37.8	31.2	37.0	37.0
7-8 PM	1087	0.0	195	0.0	1500	1087	0	195	1.56	29	64.3	58.9	39.8	37.3	37.3
8-9 PM	983	0.0	176	0.0	1500	983	0	176	0.52	0	64.6	62.6	41.7	37.6	37.6
9-10 PM	855	0.0	153	0.0	1500	855	0	153	0.51	0	64.8	62.8	42.2	37.8	37.8
10-11 PM	692	0.0	123	0.0	1500	692	0	123	0.49	0	65.1	63.2	42.8	38.2	38.2
11PM-MID	505	0.0	90	0.0	1500	505	0	90	0.47	0	65.5	63.6	43.5	38.6	38.6

----- SITE BREAKDOWN DELAYS -----	
BREAKDOWN DURATION (MINS)	0
RANGE OF QUEUE DELAY - MIN	0.0
(VEH-H) MAX	0.0
RANGE OF DIVN DELAY - MIN	0.0
(VEH-H) MAX	0.0
AV BREAKDOWNS PER DAY	0.00
AV QUEUE DELAY/DAY (VEH-H)	0.0
AV DIVN DELAY/DAY (VEH-H)	0.0
AV TOTAL DELAY/DAY (VEH-H)	0.0

----- SITE ACCIDENT DELAYS -----	
ACCIDENT DURATION (MINS)	0
RANGE OF QUEUE DELAY - MIN	0.0
(VEH-H) MAX	0.0
RANGE OF DIVN DELAY - MIN	0.0
(VEH-H) MAX	0.0
AV ACCIDENTS PER DAY	0.00
AV QUEUE DELAY/DAY (VEH-H)	0.0
AV DIVN DELAY/DAY (VEH-H)	0.0
AV TOTAL DELAY/DAY (VEH-H)	0.0

AVERAGE ACCIDENT NUMBERS (PIA/DAY)	
MAIN ROUTE WITHOUT WORKS	0.0704
MAIN ROUTE WITH WORKS	0.0671
DIVERSION	0.1307

PIA: Personal Injury Accidents

IMPACTS ON ROAD USERS	
ROAD USER COSTS PER DAY (DOLLARS)	\$72,160
CONGESTED HOURS PER DAY*	6

*Delays Exceeding 15 Minutes

**IH 39/90: BELTLINE TO STH 73 (DANE COUNTY)
 CONTINUOUS (24 HOUR) CLOSURE
 DIVERSION ROUTE: STH 73 - USH 12**

MAY
 Analyzed for 2009
 Construction Season

GRAPHICAL REPRESENTATION OF TRAFFIC MODEL INPUT AND OUTPUT
SATURDAY EASTBOUND DIRECTION

