

IH 94: IH 39/STH 30 TO STH 73 (DANE COUNTY) CONTINUOUS (24 HOUR) CLOSURE DIVERSION ROUTE: IH 39 - USH 12 - STH 73	MAY
	Analyzed for 2009 Construction Season

SUMMARY OF TRAFFIC MODEL OUTPUT

MON-THUR WESTBOUND DIRECTION

TIME OF DAY	FLOWS AND CAPACITY IN VEH/HR							AVERAGE SPEEDS IN MPH							
	MAIN ROUTE		ALTERNATE ROUTE		SITE CAPA CITY	FLOW MAIN ROUTE	FLOW DIVER -TING	TOTAL DIVN FLOW	AV.DEL PER VEH (MINS)	AVERAGE QUEUE (VEH)	MAIN ROUTE		ALTERNATE ROUTE		
	DEMAND FLOW	PCT HEAVY	NORMAL FLOW	PCT HEAVY							WITHOUT WORK ZN	WITH WORK ZN	SITE	WITHOUT WORK ZN	WITH WORK ZN
MID-1 AM	170	0.0	37	0.0	1500	170	0	37	0.44	0	66.1	63.0	44.8	44.2	44.2
1-2 AM	132	0.0	29	0.0	1500	132	0	29	0.44	0	66.1	63.2	45.0	44.3	44.3
2-3 AM	116	0.0	25	0.0	1500	116	0	25	0.43	0	66.2	63.2	45.0	44.3	44.3
3-4 AM	136	0.0	29	0.0	1500	136	0	29	0.44	0	66.1	63.2	45.0	44.3	44.3
4-5 AM	230	0.0	50	0.0	1500	230	0	50	0.44	0	66.0	62.9	44.6	44.0	44.0
5-6 AM	579	0.0	127	0.0	1500	579	0	127	0.48	0	65.3	62.1	43.2	42.9	42.9
6-7 AM	1198	0.0	262	0.0	1499	1198	0	262	0.65	0	64.1	60.0	38.2	41.0	41.0
7-8 AM	1532	0.0	334	0.0	1499	1532	0	334	1.31	8	63.5	55.8	30.8	39.9	39.9
8-9 AM	1462	0.0	319	0.0	1499	1462	0	319	1.70	19	63.7	54.0	31.2	40.2	40.2
9-10 AM	1351	0.0	295	0.0	1500	1351	0	295	0.83	0	63.8	58.7	34.2	40.5	40.5
10-11 AM	1283	0.0	279	0.0	1500	1283	0	279	0.74	0	64.0	59.3	36.0	40.7	40.7
11A-NOON	1259	0.0	274	0.0	1500	1259	0	274	0.71	0	64.0	59.6	36.6	40.8	40.8
NOON-1PM	1263	0.0	275	0.0	1500	1263	0	275	0.72	0	64.0	59.5	36.5	40.8	40.8
1-2 PM	1268	0.0	276	0.0	1500	1268	0	276	0.72	0	64.0	59.5	36.4	40.8	40.8
2-3 PM	1328	0.0	290	0.0	1499	1328	0	290	0.80	0	63.9	58.9	34.8	40.6	40.6
3-4 PM	1548	0.0	338	0.0	1499	1548	0	338	1.44	11	63.5	55.1	30.8	39.9	39.9
4-5 PM	1708	0.0	373	0.0	1500	1708	0	373	6.40	152	63.2	37.9	30.8	39.4	39.4
5-6 PM	1506	0.0	329	0.0	1499	1506	0	329	11.38	279	63.6	28.9	30.8	40.1	40.1
6-7 PM	1025	0.0	224	0.0	1499	1025	0	224	3.14	87	64.5	48.3	38.2	41.5	41.5
7-8 PM	734	0.0	160	0.0	1500	734	0	160	0.49	0	65.0	61.7	42.7	42.4	42.4
8-9 PM	622	0.0	136	0.0	1500	622	0	136	0.48	0	65.2	62.0	43.0	42.8	42.8
9-10 PM	563	0.0	122	0.0	1500	563	0	122	0.48	0	65.3	62.2	43.3	43.0	43.0
10-11 PM	454	0.0	99	0.0	1500	454	0	99	0.47	0	65.5	62.4	43.7	43.3	43.3
11PM-MID	273	0.0	60	0.0	1500	273	0	60	0.45	0	65.9	62.8	44.4	43.8	43.8

----- SITE BREAKDOWN DELAYS -----	
BREAKDOWN DURATION (MINS)	0
RANGE OF QUEUE DELAY - MIN (VEH-H) MAX	0.0
RANGE OF DIVN DELAY - MIN (VEH-H) MAX	0.0
AV BREAKDOWNS PER DAY	0.00
AV QUEUE DELAY/DAY (VEH-H)	0.0
AV DIVN DELAY/DAY (VEH-H)	0.0
AV TOTAL DELAY/DAY (VEH-H)	0.0

----- SITE ACCIDENT DELAYS -----	
ACCIDENT DURATION (MINS)	0
RANGE OF QUEUE DELAY - MIN (VEH-H) MAX	0.0
RANGE OF DIVN DELAY - MIN (VEH-H) MAX	0.0
AV ACCIDENTS PER DAY	0.00
AV QUEUE DELAY/DAY (VEH-H)	0.0
AV DIVN DELAY/DAY (VEH-H)	0.0
AV TOTAL DELAY/DAY (VEH-H)	0.0

AVERAGE ACCIDENT NUMBERS (PIA/DAY)	
MAIN ROUTE WITHOUT WORKS	0.0349
MAIN ROUTE WITH WORKS	0.0335
DIVERSION	0.0360

PIA: Personal Injury Accidents

IMPACTS ON ROAD USERS	
ROAD USER COSTS PER DAY (DOLLARS)	\$9,908
CONGESTED HOURS PER DAY*	0

*Delays Exceeding 15 Minutes

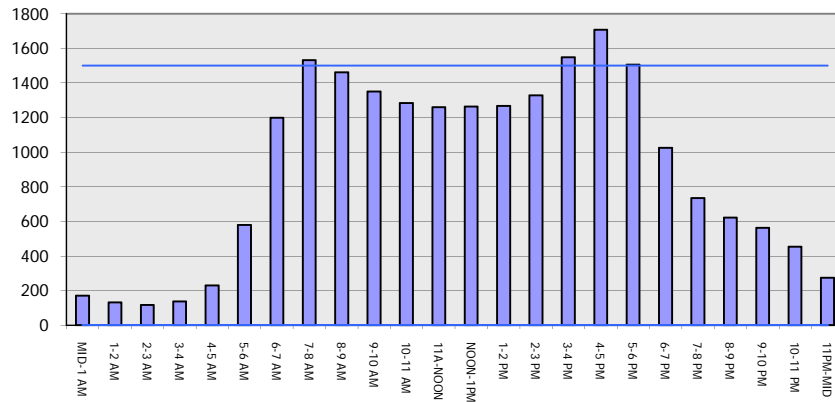
IH 94: IH 39/STH 30 TO STH 73 (DANE COUNTY)
CONTINUOUS (24 HOUR) CLOSURE
DIVERSION ROUTE: IH 39 - USH 12 - STH 73

MAY
 Analyzed for 2009
 Construction Season

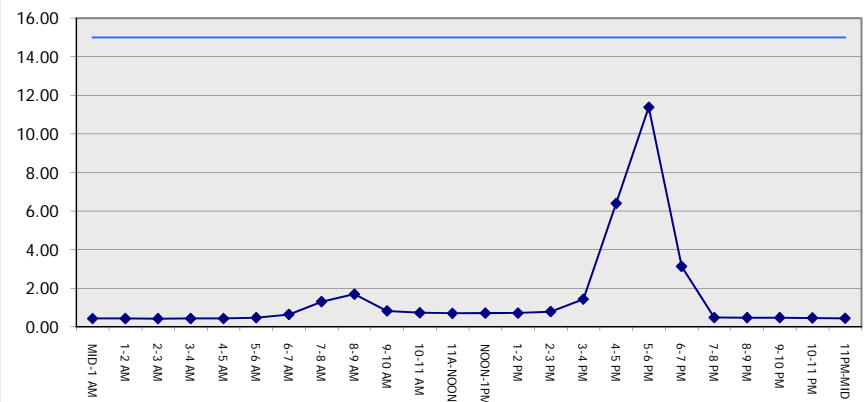
GRAPHICAL REPRESENTATION OF TRAFFIC MODEL INPUT AND OUTPUT

MON-THUR WESTBOUND DIRECTION

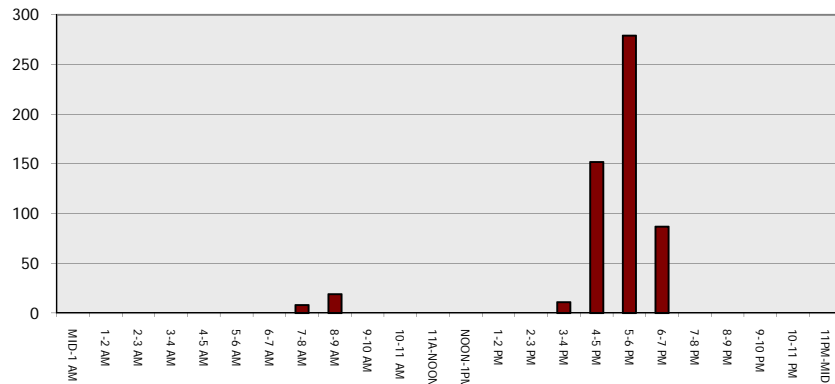
Main Route - Traffic Demand (Vehicles Per Hour)



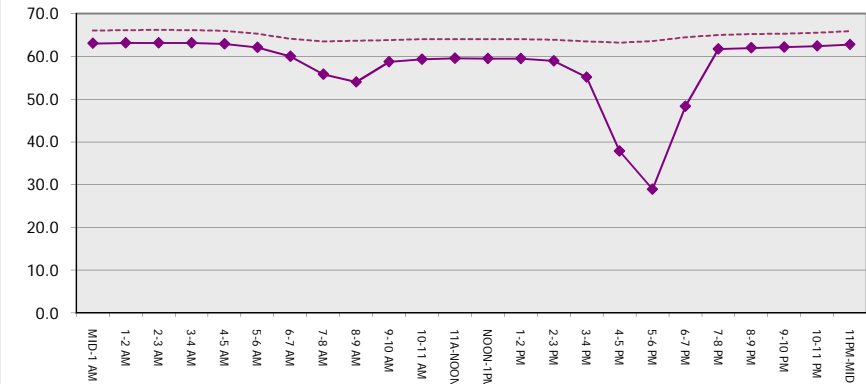
Main Route Average Delay Per Vehicle (Minutes)



Main Route - Average Queue Length (Vehicles)



Main Route - Average Speed (MPH)



IH 94: IH 39/STH 30 TO STH 73 (DANE COUNTY) CONTINUOUS (24 HOUR) CLOSURE DIVERSION ROUTE: IH 39 - USH 12 - STH 73	MAY
	Analyzed for 2009 Construction Season

SUMMARY OF TRAFFIC MODEL OUTPUT

MON-THUR EASTBOUND DIRECTION

TIME OF DAY	FLOWS AND CAPACITY IN VEH/HR								AVERAGE SPEEDS IN MPH						
	MAIN		DIVERSION		SITE CAPA CITY	FLOW MAIN ROUTE	FLOW DIVER -TING	TOTAL DIVN FLOW	AV.DEL PER VEH (MINS)	AVERAGE QUEUE (VEH)	MAIN ROUTE		SITE	ALTERNATE ROUTE	
	DEMAND FLOW	PCT HEAVY	NORMAL FLOW	PCT HEAVY							WITHOUT WORK ZN	WITH WORK ZN		WITHOUT WORK ZN	WITH WORK ZN
MID-1 AM	163	0.0	36	0.0	1500	163	0	36	0.44	0	66.1	63.1	44.8	44.2	44.2
1-2 AM	122	0.0	26	0.0	1500	122	0	26	0.43	0	66.1	63.2	45.0	44.3	44.3
2-3 AM	127	0.0	27	0.0	1500	127	0	27	0.43	0	66.1	63.2	45.0	44.3	44.3
3-4 AM	160	0.0	35	0.0	1500	160	0	35	0.44	0	66.1	63.1	44.8	44.2	44.2
4-5 AM	338	0.0	74	0.0	1500	338	0	74	0.46	0	65.8	62.7	44.2	43.7	43.7
5-6 AM	758	0.0	165	0.0	1500	758	0	165	0.50	0	65.0	61.7	42.5	42.4	42.4
6-7 AM	1183	0.0	258	0.0	1500	1183	0	258	0.62	0	64.1	60.2	39.0	41.0	41.0
7-8 AM	1414	0.0	309	0.0	1500	1414	0	309	0.91	0	63.8	58.2	32.7	40.3	40.3
8-9 AM	1181	0.0	257	0.0	1500	1181	0	257	0.61	0	64.2	60.3	39.1	41.0	41.0
9-10 AM	1112	0.0	243	0.0	1500	1112	0	243	0.53	0	64.3	60.9	41.3	41.2	41.2
10-11 AM	1121	0.0	245	0.0	1500	1121	0	245	0.53	0	64.3	60.9	41.2	41.2	41.2
11A-NOON	1172	0.0	255	0.0	1500	1172	0	255	0.60	0	64.2	60.4	39.4	41.0	41.0
NOON-1PM	1220	0.0	266	0.0	1500	1220	0	266	0.66	0	64.1	59.9	37.8	40.9	40.9
1-2 PM	1375	0.0	300	0.0	1499	1375	0	300	0.86	0	63.8	58.5	33.6	40.4	40.4
2-3 PM	1501	0.0	328	0.0	1499	1501	0	328	1.18	5	63.6	56.6	31.2	40.1	40.1
3-4 PM	1696	0.0	370	0.0	1500	1696	0	370	4.81	109	63.2	42.1	30.8	39.4	39.4
4-5 PM	1781	0.0	388	0.0	1500	1781	0	388	13.96	359	63.1	25.7	30.8	39.2	39.2
5-6 PM	1599	0.0	348	0.0	1499	1561	37	386	21.54	554	63.4	19.5	30.8	39.7	39.2
6-7 PM	1152	0.0	251	0.0	1499	1152	0	251	15.60	408	64.2	24.2	31.5	41.1	41.1
7-8 PM	858	0.0	187	0.0	1500	858	0	187	1.57	37	64.8	55.5	42.0	42.0	42.0
8-9 PM	721	0.0	157	0.0	1500	721	0	157	0.49	0	65.0	61.8	42.7	42.5	42.5
9-10 PM	573	0.0	126	0.0	1500	573	0	126	0.48	0	65.3	62.1	43.2	42.9	42.9
10-11 PM	400	0.0	87	0.0	1500	400	0	87	0.46	0	65.6	62.5	43.9	43.5	43.5
11PM-MID	235	0.0	51	0.0	1500	235	0	51	0.45	0	66.0	62.9	44.5	44.0	44.0

----- SITE BREAKDOWN DELAYS -----	
BREAKDOWN DURATION (MINS)	0
RANGE OF QUEUE DELAY - MIN	0.0
(VEH-H) MAX	0.0
RANGE OF DIVN DELAY - MIN	0.0
(VEH-H) MAX	0.0
AV BREAKDOWNS PER DAY	0.00
AV QUEUE DELAY/DAY (VEH-H)	0.0
AV DIVN DELAY/DAY (VEH-H)	0.0
AV TOTAL DELAY/DAY (VEH-H)	0.0

----- SITE ACCIDENT DELAYS -----	
ACCIDENT DURATION (MINS)	0
RANGE OF QUEUE DELAY - MIN	0.0
(VEH-H) MAX	0.0
RANGE OF DIVN DELAY - MIN	0.0
(VEH-H) MAX	0.0
AV ACCIDENTS PER DAY	0.00
AV QUEUE DELAY/DAY (VEH-H)	0.0
AV DIVN DELAY/DAY (VEH-H)	0.0
AV TOTAL DELAY/DAY (VEH-H)	0.0

AVERAGE ACCIDENT NUMBERS (PIA/DAY)	
MAIN ROUTE WITHOUT WORKS	0.0353
MAIN ROUTE WITH WORKS	0.0338
DIVERSION	0.0367

PIA: Personal Injury Accidents

IMPACTS ON ROAD USERS	
ROAD USER COSTS PER DAY (DOLLARS)	\$20,631
CONGESTED HOURS PER DAY*	2

*Delays Exceeding 15 Minutes

IH 94: IH 39/STH 30 TO STH 73 (DANE COUNTY)
CONTINUOUS (24 HOUR) CLOSURE
DIVERSION ROUTE: IH 39 - USH 12 - STH 73

MAY
 Analyzed for 2009
 Construction Season

GRAPHICAL REPRESENTATION OF TRAFFIC MODEL INPUT AND OUTPUT
MON-THUR EASTBOUND DIRECTION

