

<b>USH 151: CTH PD TO CTH PB (DANE COUNTY)                  CONTINUOUS (24 HOUR) CLOSURE                  NO DIVERSION ROUTE (MAX QUEUE METHOD)</b>	<b>OCTOBER</b>
	Analyzed for 2009 Construction Season

**SUMMARY OF TRAFFIC MODEL OUTPUT**

SUNDAY WESTBOUND DIRECTION

TIME OF DAY	FLOWS AND CAPACITY IN VEH/HR						AVERAGE SPEEDS IN MPH			
	MAIN ROUTE		SITE CAPA CITY	FLOW		AV.DEL PER VEH (MINS)	AVERAGE QUEUE (VEH)	MAIN ROUTE		SITE
	DEMAND FLOW	PCT HEAVY		MAIN ROUTE	'DIVER TED'			WITHOUT WORK ZONE	WITH WORK ZONE	
MID-1 AM	136	0.0	1500	136	0	0.44	0	66.1	54.3	45.0
1-2 AM	107	0.0	1500	107	0	0.43	0	66.2	54.4	45.1
2-3 AM	81	0.0	1500	81	0	0.43	0	66.3	54.5	45.1
3-4 AM	58	0.0	1500	58	0	0.43	0	66.3	54.5	45.3
4-5 AM	97	0.0	1500	97	0	0.43	0	66.2	54.4	45.1
5-6 AM	140	0.0	1500	140	0	0.44	0	66.1	54.3	44.9
6-7 AM	266	0.0	1500	266	0	0.45	0	65.9	53.8	44.4
7-8 AM	466	0.0	1500	466	0	0.47	0	65.5	53.2	43.7
8-9 AM	628	0.0	1500	628	0	0.48	0	65.2	52.7	43.0
9-10 AM	847	0.0	1500	847	0	0.50	0	64.8	51.9	42.2
10-11 AM	979	0.0	1500	979	0	0.52	0	64.6	51.5	41.7
11AM-NOON	1094	0.0	1500	1094	0	0.53	0	64.3	51.2	41.4
NOON-1PM	989	0.0	1500	989	0	0.52	0	64.5	51.5	41.7
1-2 PM	1039	0.0	1500	1039	0	0.52	0	64.5	51.4	41.5
2-3 PM	1067	0.0	1500	1067	0	0.53	0	64.4	51.2	41.4
3-4 PM	1130	0.0	1500	1130	0	0.55	0	64.3	50.7	40.8
4-5 PM	997	0.0	1500	997	0	0.52	0	64.5	51.5	41.7
5-6 PM	892	0.0	1500	892	0	0.51	0	64.7	51.8	42.0
6-7 PM	688	0.0	1500	688	0	0.49	0	65.1	52.5	42.8
7-8 PM	524	0.0	1500	524	0	0.47	0	65.4	53.0	43.4
8-9 PM	352	0.0	1500	352	0	0.46	0	65.7	53.5	44.1
9-10 PM	220	0.0	1500	220	0	0.44	0	66.0	54.0	44.6
10-11 PM	157	0.0	1500	157	0	0.44	0	66.1	54.2	44.8
11PM-MID	95	0.0	1500	95	0	0.43	0	66.2	54.4	45.1

*----- SITE BREAKDOWN DELAYS -----*	
BREAKDOWN DURATION (MINS)	0
RANGE OF QUEUE DELAY - MIN (VEH-H) MAX	0.0
AV BREAKDOWNS PER DAY	0.00
AV QUEUE DELAY/DAY (VEH-H)	0.0
AV TOTAL DELAY/DAY (VEH-H)	0.0

*----- SITE ACCIDENT DELAYS -----*	
BREAKDOWN DURATION (MINS)	0
RANGE OF QUEUE DELAY - MIN (VEH-H) MAX	0
AV BREAKDOWNS PER DAY	0
AV QUEUE DELAY/DAY (VEH-H)	0
AV TOTAL DELAY/DAY (VEH-H)	0

AVERAGE ACCIDENT NUMBERS (PIA/DAY)	
MAIN ROUTE WITHOUT WORKS	0.0046
MAIN ROUTE WITH WORKS	0.0037
'DIVERSION'	0.0000
PIA: Personal Injury Accidents	
IMPACTS ON ROAD USERS	
ROAD USER COSTS PER DAY	\$1,700
CONGESTED HOURS PER DAY*	0

\*Delays Exceeding User-Specified Maximum

**USH 151: CTH PD TO CTH PB (DANE COUNTY)  
CONTINUOUS (24 HOUR) CLOSURE  
NO DIVERSION ROUTE (MAX QUEUE METHOD)**

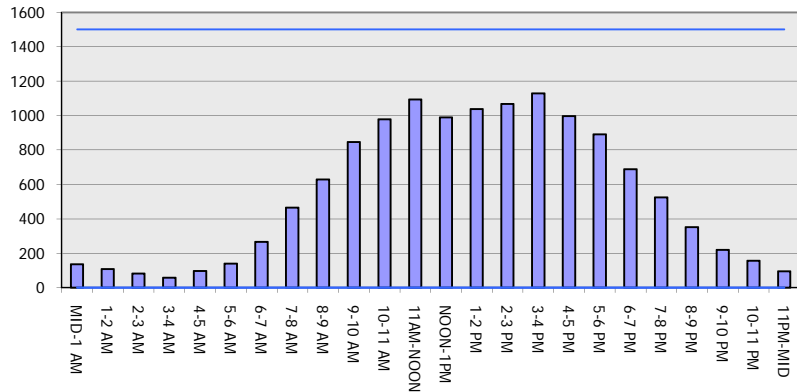
**OCTOBER**

Analyzed for 2009  
Construction Season

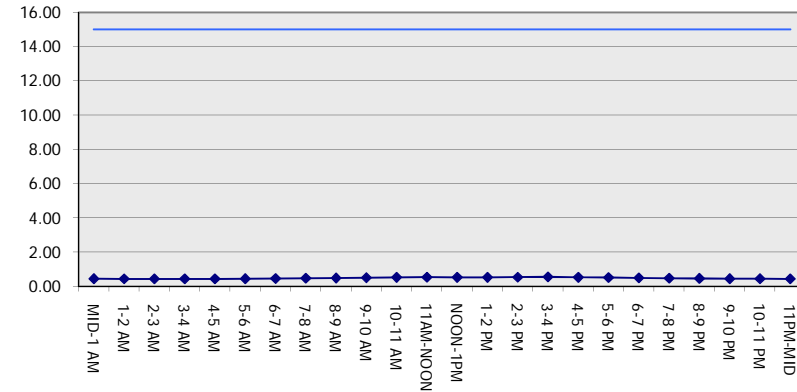
**GRAPHICAL REPRESENTATION OF TRAFFIC MODEL INPUT AND OUTPUT**

**SUNDAY WESTBOUND DIRECTION**

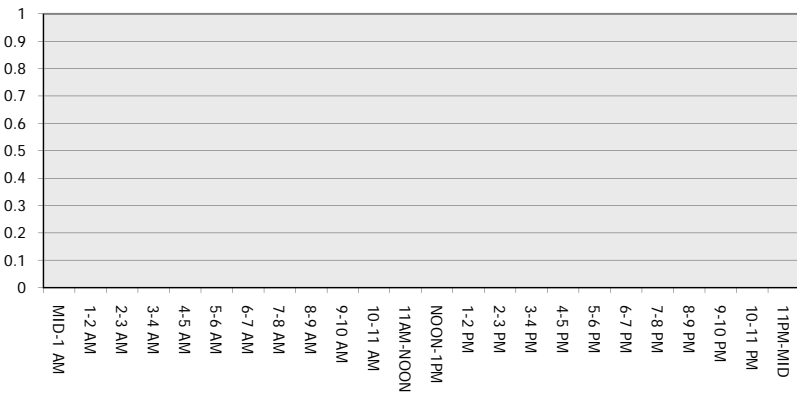
**Main Route - Traffic Demand (Vehicles Per Hour)**



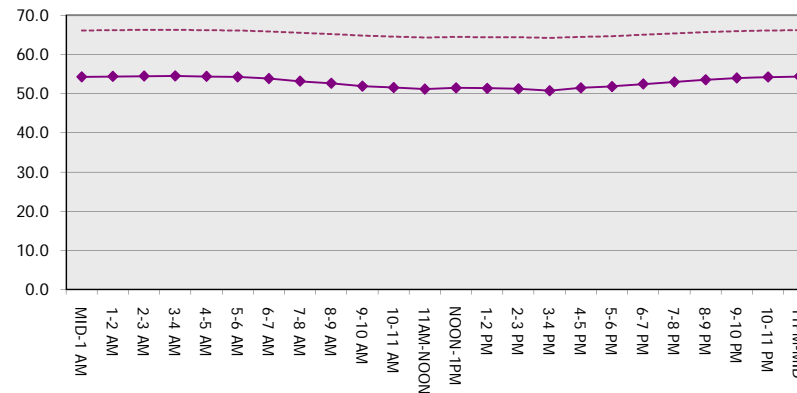
**Main Route Average Delay Per Vehicle (Minutes)**



**Main Route - Average Queue Length (Vehicles)**



**Main Route - Average Speed (MPH)**



<b>USH 151: CTH PD TO CTH PB (DANE COUNTY)                  CONTINUOUS (24 HOUR) CLOSURE                  NO DIVERSION ROUTE (MAX QUEUE METHOD)</b>	<b>OCTOBER</b>
	Analyzed for 2009 Construction Season

**SUMMARY OF TRAFFIC MODEL OUTPUT**

SUNDAY EASTBOUND DIRECTION

TIME OF DAY	FLOWS AND CAPACITY IN VEH/HR							AVERAGE SPEEDS IN MPH		
	MAIN ROUTE		SITE CAPA CITY	FLOW		AV.DEL PER VEH (MINS)	AVERAGE QUEUE (VEH)	MAIN ROUTE		SITE
	DEMAND FLOW	PCT HEAVY		MAIN ROUTE	'DIVER TED'			WITHOUT WORK ZONE	WITH WORK ZONE	
MID-1 AM	91	0.0	1500	91	0	0.43	0	66.2	54.5	45.1
1-2 AM	64	0.0	1500	64	0	0.43	0	66.3	54.5	45.2
2-3 AM	45	0.0	1500	45	0	0.43	0	66.3	54.6	45.3
3-4 AM	56	0.0	1500	56	0	0.43	0	66.3	54.5	45.3
4-5 AM	104	0.0	1500	104	0	0.43	0	66.2	54.4	45.1
5-6 AM	209	0.0	1500	209	0	0.44	0	66.0	54.0	44.6
6-7 AM	295	0.0	1500	295	0	0.45	0	65.8	53.7	44.3
7-8 AM	456	0.0	1500	456	0	0.47	0	65.5	53.2	43.7
8-9 AM	746	0.0	1500	746	0	0.49	0	65.0	52.2	42.6
9-10 AM	1025	0.0	1500	1025	0	0.52	0	64.5	51.4	41.6
10-11 AM	1193	0.0	1500	1193	0	0.63	0	64.1	49.2	38.7
11AM-NOON	1220	0.0	1500	1220	0	0.66	0	64.1	48.5	37.8
NOON-1PM	1222	0.0	1500	1222	0	0.66	0	64.1	48.4	37.8
1-2 PM	1238	0.0	1500	1238	0	0.69	0	64.1	48.1	37.3
2-3 PM	1269	0.0	1500	1269	0	0.73	0	64.0	47.3	36.4
3-4 PM	1292	0.0	1500	1292	0	0.76	0	64.0	46.8	35.7
4-5 PM	1127	0.0	1500	1127	0	0.54	0	64.3	50.9	40.9
5-6 PM	937	0.0	1500	937	0	0.51	0	64.6	51.7	41.9
6-7 PM	691	0.0	1500	691	0	0.49	0	65.1	52.4	42.8
7-8 PM	496	0.0	1500	496	0	0.47	0	65.5	53.1	43.5
8-9 PM	383	0.0	1500	383	0	0.46	0	65.7	53.5	44.0
9-10 PM	227	0.0	1500	227	0	0.44	0	66.0	54.0	44.6
10-11 PM	124	0.0	1500	124	0	0.43	0	66.1	54.3	45.0
11PM-MID	60	0.0	1500	60	0	0.43	0	66.3	54.5	45.3

*----- SITE BREAKDOWN DELAYS -----*	
BREAKDOWN DURATION (MINS)	0
RANGE OF QUEUE DELAY - MIN (VEH-H) MAX	0.0
AV BREAKDOWNS PER DAY	0.00
AV QUEUE DELAY/DAY (VEH-H)	0.0
AV TOTAL DELAY/DAY (VEH-H)	0.0

*----- SITE ACCIDENT DELAYS -----*	
BREAKDOWN DURATION (MINS)	0
RANGE OF QUEUE DELAY - MIN (VEH-H) MAX	0
AV BREAKDOWNS PER DAY	0
AV QUEUE DELAY/DAY (VEH-H)	0
AV TOTAL DELAY/DAY (VEH-H)	0

AVERAGE ACCIDENT NUMBERS (PIA/DAY)	
MAIN ROUTE WITHOUT WORKS	0.0051
MAIN ROUTE WITH WORKS	0.0041
'DIVERSION'	0.0000

PIA: Personal Injury Accidents

ECONOMIC IMPACT ON ROAD USERS	
ROAD USER COSTS PER DAY	\$2,228
CONGESTED HOURS PER DAY*	0

\*Delays Exceeding User-Specified Maximum

**USH 151: CTH PD TO CTH PB (DANE COUNTY)  
CONTINUOUS (24 HOUR) CLOSURE  
NO DIVERSION ROUTE (MAX QUEUE METHOD)**

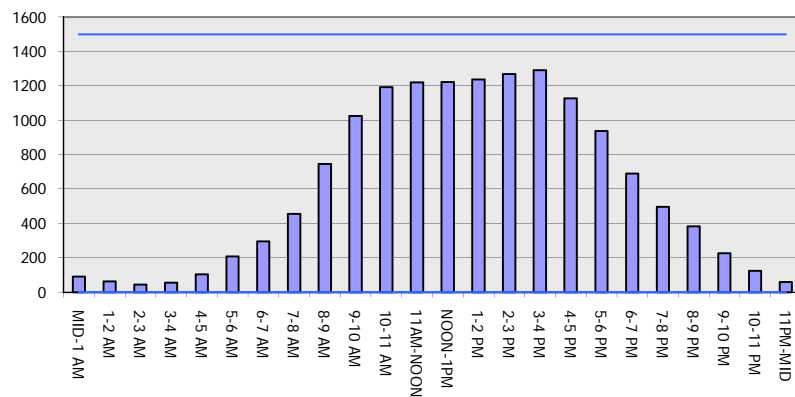
**OCTOBER**

Analyzed for 2009  
Construction Season

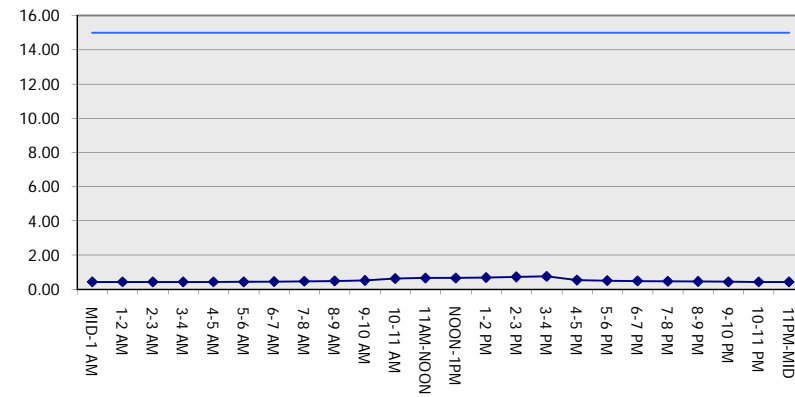
**GRAPHICAL REPRESENTATION OF TRAFFIC MODEL INPUT AND OUTPUT**

**SUNDAY EASTBOUND DIRECTION**

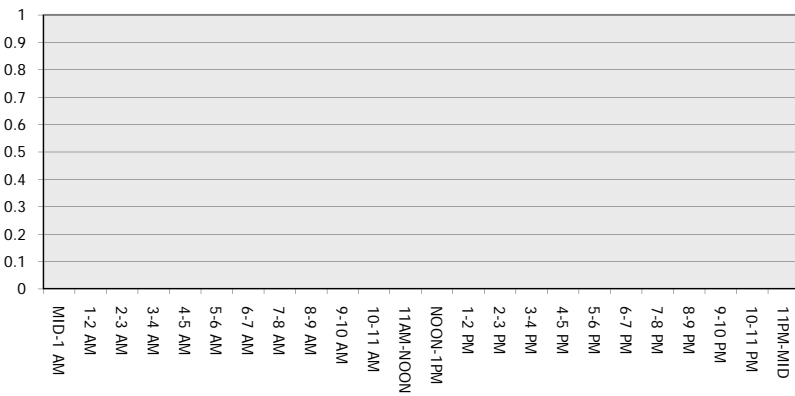
**Main Route - Traffic Demand (Vehicles Per Hour)**



**Main Route Average Delay Per Vehicle (Minutes)**



**Main Route - Average Queue Length (Vehicles)**



**Main Route - Average Speed (MPH)**

