

USH 151: CTH PD TO CTH PB (DANE COUNTY) CONTINUOUS (24 HOUR) CLOSURE NO DIVERSION ROUTE (MAX QUEUE METHOD)	OCTOBER
	Analyzed for 2009 Construction Season

SUMMARY OF TRAFFIC MODEL OUTPUT

MON-THUR WESTBOUND DIRECTION

TIME OF DAY	FLOWS AND CAPACITY IN VEH/HR						AVERAGE SPEEDS IN MPH				
	MAIN ROUTE		SITE CAPA CITY	FLOW		AV.DEL PER VEH (MINS)	AVERAGE QUEUE (VEH)	MAIN ROUTE		SITE	
	DEMAND FLOW	PCT HEAVY		MAIN ROUTE	'DIVER TED'			WITHOUT WORK ZONE	WITH WORK ZONE		
MID-1 AM	75	0.0	1500	75	0	0.43	0	66.3	54.5	45.2	
1-2 AM	62	0.0	1500	62	0	0.43	0	66.3	54.5	45.3	
2-3 AM	77	0.0	1500	77	0	0.43	0	66.3	54.5	45.2	
3-4 AM	109	0.0	1500	109	0	0.43	0	66.2	54.3	45.0	
4-5 AM	280	0.0	1500	280	0	0.45	0	65.9	53.8	44.3	
5-6 AM	607	0.0	1500	607	0	0.48	0	65.3	52.7	43.1	
6-7 AM	987	0.0	1500	987	0	0.52	0	64.5	51.5	41.7	
7-8 AM	1030	0.0	1500	1030	0	0.52	0	64.5	51.4	41.5	
8-9 AM	812	0.0	1500	812	0	0.50	0	64.9	52.0	42.4	
9-10 AM	793	0.0	1500	793	0	0.50	0	64.9	52.1	42.4	
10-11 AM	847	0.0	1500	847	0	0.50	0	64.8	51.9	42.2	
11AM-NOON	910	0.0	1500	910	0	0.51	0	64.7	51.7	42.0	
NOON-1PM	945	0.0	1500	945	0	0.51	0	64.6	51.6	41.9	
1-2 PM	1249	0.0	1499	1249	0	0.70	0	64.1	47.9	37.1	
2-3 PM	1510	0.0	1499	1510	0	1.31	10	63.6	39.0	31.4	
3-4 PM	1823	0.0	1500	1823	0	7.39	195	63.0	14.5	30.8	
4-5 PM	1725	0.0	1499	1549	176	16.52+	418	63.2	9.1	30.8	
5-6 PM	1161	0.0	1499	1161	0	10.09+	272	64.2	12.0	33.3	
6-7 PM	770	0.0	1500	770	0	0.59	4	65.0	50.3	42.5	
7-8 PM	629	0.0	1500	629	0	0.48	0	65.2	52.7	43.0	
8-9 PM	507	0.0	1500	507	0	0.47	0	65.5	53.0	43.5	
9-10 PM	358	0.0	1500	358	0	0.46	0	65.7	53.5	44.0	
10-11 PM	214	0.0	1500	214	0	0.44	0	66.0	54.0	44.6	
11PM-MID	126	0.0	1500	126	0	0.43	0	66.1	54.3	45.0	

+ INDICATES QUEUEING EXCEEDS USER-SPECIFIED MAXIMUM LIMIT

----- SITE BREAKDOWN DELAYS -----	
BREAKDOWN DURATION (MINS)	0
RANGE OF QUEUE DELAY - MIN (VEH-H) MAX	0.0
AV BREAKDOWNS PER DAY	0.00
AV QUEUE DELAY/DAY (VEH-H)	0.0
AV TOTAL DELAY/DAY (VEH-H)	0.0

----- SITE ACCIDENT DELAYS -----	
BREAKDOWN DURATION (MINS)	0
RANGE OF QUEUE DELAY - MIN (VEH-H) MAX	0
AV BREAKDOWNS PER DAY	0
AV QUEUE DELAY/DAY (VEH-H)	0
AV TOTAL DELAY/DAY (VEH-H)	0

AVERAGE ACCIDENT NUMBERS (PIA/DAY)	
MAIN ROUTE WITHOUT WORKS	0.0062
MAIN ROUTE WITH WORKS	0.0050
'DIVERSION'	0.0001
<small>PIA: Personal Injury Accidents</small>	
IMPACTS ON ROAD USERS	
ROAD USER COSTS PER DAY	\$13,081
CONGESTED HOURS PER DAY*	2

*Delays Exceeding User-Specified Maximum

**USH 151: CTH PD TO CTH PB (DANE COUNTY)
CONTINUOUS (24 HOUR) CLOSURE
NO DIVERSION ROUTE (MAX QUEUE METHOD)**

OCTOBER

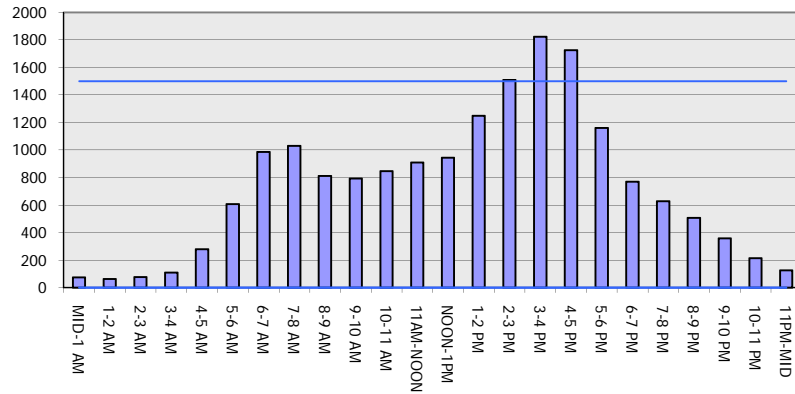
Analyzed for 2009
Construction Season

GRAPHICAL REPRESENTATION OF TRAFFIC MODEL INPUT AND OUTPUT

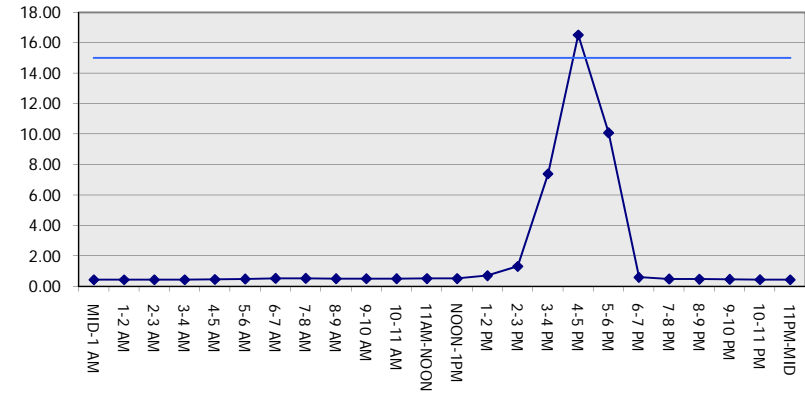
MON-THUR

WESTBOUND DIRECTION

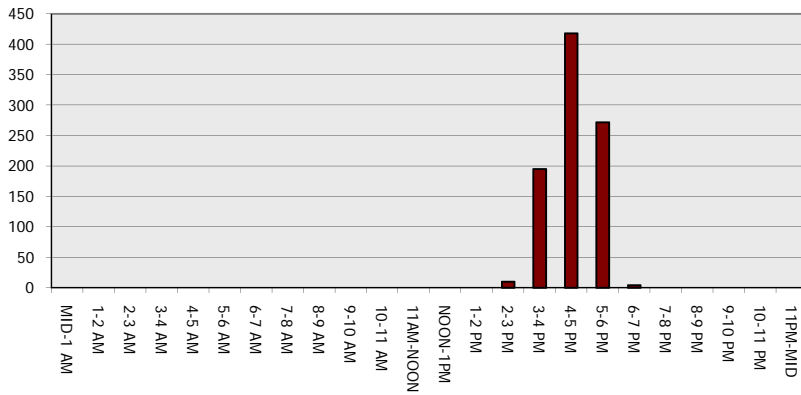
Main Route - Traffic Demand (Vehicles Per Hour)



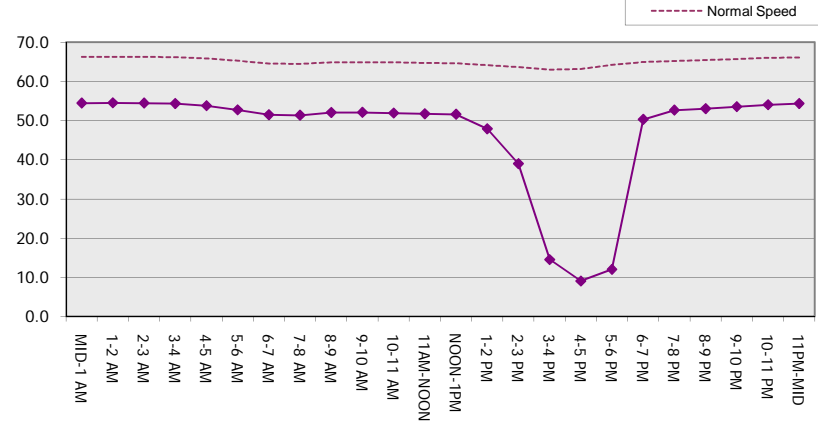
Main Route Average Delay Per Vehicle (Minutes)



Main Route - Average Queue Length (Vehicles)



Main Route - Average Speed (MPH)



USH 151: CTH PD TO CTH PB (DANE COUNTY) CONTINUOUS (24 HOUR) CLOSURE NO DIVERSION ROUTE (MAX QUEUE METHOD)	OCTOBER
	Analyzed for 2009 Construction Season

SUMMARY OF TRAFFIC MODEL OUTPUT

MON-THUR EASTBOUND DIRECTION

TIME OF DAY	FLOWS AND CAPACITY IN VEH/HR							AVERAGE SPEEDS IN MPH		
	MAIN ROUTE		SITE CAPA CITY	FLOW		AV.DEL PER VEH (MINS)	AVERAGE QUEUE (VEH)	MAIN ROUTE		SITE
	DEMAND FLOW	PCT HEAVY		MAIN ROUTE	'DIVER TED'			WITHOUT WORK ZONE	WITH WORK ZONE	
MID-1 AM	62	0.0	1500	62	0	0.43	0	66.3	54.5	45.3
1-2 AM	57	0.0	1500	57	0	0.43	0	66.3	54.5	45.3
2-3 AM	93	0.0	1500	93	0	0.43	0	66.2	54.4	45.1
3-4 AM	225	0.0	1500	225	0	0.44	0	66.0	54.0	44.6
4-5 AM	820	0.0	1500	820	0	0.50	0	64.8	52.0	42.3
5-6 AM	1692	0.0	1499	1692	0	2.73	62	63.2	27.4	30.8
6-7 AM	1895	0.0	1500	1711	184	14.07+	360	62.8	9.8	30.8
7-8 AM	1498	0.0	1500	1458	39	16.02+	404	63.6	9.2	30.8
8-9 AM	1032	0.0	1499	1032	0	3.78	156	64.5	23.3	37.1
9-10 AM	908	0.0	1500	908	0	0.51	0	64.7	51.7	42.0
10-11 AM	921	0.0	1500	921	0	0.51	0	64.6	51.7	42.0
11AM-NOON	949	0.0	1500	949	0	0.51	0	64.6	51.6	41.9
NOON-1PM	974	0.0	1500	974	0	0.52	0	64.6	51.5	41.8
1-2 PM	973	0.0	1500	973	0	0.52	0	64.6	51.5	41.8
2-3 PM	1083	0.0	1500	1083	0	0.53	0	64.4	51.2	41.4
3-4 PM	1150	0.0	1500	1150	0	0.57	0	64.3	50.2	40.1
4-5 PM	1199	0.0	1500	1199	0	0.64	0	64.1	49.0	38.5
5-6 PM	877	0.0	1500	877	0	0.51	0	64.8	51.9	42.1
6-7 PM	561	0.0	1500	561	0	0.48	0	65.3	52.8	43.3
7-8 PM	402	0.0	1500	402	0	0.46	0	65.6	53.4	43.9
8-9 PM	383	0.0	1500	383	0	0.46	0	65.7	53.5	44.0
9-10 PM	273	0.0	1500	273	0	0.45	0	65.9	53.8	44.4
10-11 PM	160	0.0	1500	160	0	0.44	0	66.1	54.2	44.8
11PM-MID	101	0.0	1500	101	0	0.43	0	66.2	54.4	45.1

+ INDICATES QUEUEING EXCEEDS USER-SPECIFIED MAXIMUM LIMIT

----- SITE BREAKDOWN DELAYS -----	
BREAKDOWN DURATION (MINS)	0
RANGE OF QUEUE DELAY - MIN (VEH-H) MAX	0.0
AV BREAKDOWNS PER DAY	0.00
AV QUEUE DELAY/DAY (VEH-H)	0.0
AV TOTAL DELAY/DAY (VEH-H)	0.0

----- SITE ACCIDENT DELAYS -----	
BREAKDOWN DURATION (MINS)	0
RANGE OF QUEUE DELAY - MIN (VEH-H) MAX	0
AV BREAKDOWNS PER DAY	0
AV QUEUE DELAY/DAY (VEH-H)	0
AV TOTAL DELAY/DAY (VEH-H)	0

AVERAGE ACCIDENT NUMBERS (PIA/DAY)	
MAIN ROUTE WITHOUT WORKS	0.0064
MAIN ROUTE WITH WORKS	0.0051
'DIVERSION'	0.0002

PIA: Personal Injury Accidents

ECONOMIC IMPACT ON ROAD USERS	
ROAD USER COSTS PER DAY	\$13,909
CONGESTED HOURS PER DAY*	2

*Delays Exceeding User-Specified Maximum

**USH 151: CTH PD TO CTH PB (DANE COUNTY)
CONTINUOUS (24 HOUR) CLOSURE
NO DIVERSION ROUTE (MAX QUEUE METHOD)**

OCTOBER

Analyzed for 2009
Construction Season

**GRAPHICAL REPRESENTATION OF TRAFFIC MODEL INPUT AND OUTPUT
MON-THUR EASTBOUND DIRECTION**

