

USH 151: CTH PD TO CTH PB (DANE COUNTY) CONTINUOUS (24 HOUR) CLOSURE NO DIVERSION ROUTE (MAX QUEUE METHOD)	OCTOBER
	Analyzed for 2009 Construction Season

SUMMARY OF TRAFFIC MODEL OUTPUT

FRIDAY WESTBOUND DIRECTION

TIME OF DAY	FLOWS AND CAPACITY IN VEH/HR						AVERAGE SPEEDS IN MPH				
	MAIN ROUTE		SITE CAPA CITY	FLOW		AV.DEL PER VEH (MINS)	AVERAGE QUEUE (VEH)	MAIN ROUTE		SITE	
	DEMAND FLOW	PCT HEAVY		MAIN ROUTE	'DIVER TED'			WITHOUT WORK ZONE	WITH WORK ZONE		
MID-1 AM	95	0.0	1500	95	0	0.43	0	66.2	54.4	45.1	
1-2 AM	80	0.0	1500	80	0	0.43	0	66.3	54.5	45.1	
2-3 AM	78	0.0	1500	78	0	0.43	0	66.3	54.5	45.2	
3-4 AM	112	0.0	1500	112	0	0.43	0	66.2	54.3	45.0	
4-5 AM	271	0.0	1500	271	0	0.45	0	65.9	53.8	44.4	
5-6 AM	573	0.0	1500	573	0	0.48	0	65.3	52.8	43.2	
6-7 AM	969	0.0	1500	969	0	0.52	0	64.6	51.5	41.8	
7-8 AM	1054	0.0	1500	1054	0	0.52	0	64.4	51.3	41.5	
8-9 AM	846	0.0	1500	846	0	0.50	0	64.8	51.9	42.2	
9-10 AM	893	0.0	1500	893	0	0.51	0	64.7	51.8	42.0	
10-11 AM	1039	0.0	1500	1039	0	0.52	0	64.5	51.4	41.5	
11AM-NOON	1168	0.0	1500	1168	0	0.60	0	64.2	49.8	39.5	
NOON-1PM	1261	0.0	1499	1261	0	0.71	0	64.0	47.6	36.7	
1-2 PM	1612	0.0	1499	1612	0	2.28	40	63.4	30.2	30.8	
2-3 PM	1753	0.0	1500	1753	0	9.10	230	63.1	12.5	30.8	
3-4 PM	1873	0.0	1499	1533	340	16.61+	421	62.9	9.0	30.8	
4-5 PM	1769	0.0	1500	1504	265	16.74+	424	63.1	9.0	30.8	
5-6 PM	1407	0.0	1500	1407	0	15.12+	381	63.8	9.4	30.8	
6-7 PM	941	0.0	1499	941	0	2.21	98	64.6	31.4	39.2	
7-8 PM	745	0.0	1500	745	0	0.49	0	65.0	52.3	42.6	
8-9 PM	698	0.0	1500	698	0	0.49	0	65.1	52.4	42.8	
9-10 PM	513	0.0	1500	513	0	0.47	0	65.5	53.0	43.5	
10-11 PM	344	0.0	1500	344	0	0.46	0	65.8	53.6	44.1	
11PM-MID	195	0.0	1500	195	0	0.44	0	66.0	54.1	44.7	

+ INDICATES QUEUEING EXCEEDS USER-SPECIFIED MAXIMUM LIMIT

----- SITE BREAKDOWN DELAYS -----	
BREAKDOWN DURATION (MINS)	0
RANGE OF QUEUE DELAY - MIN (VEH-H) MAX	0.0
AV BREAKDOWNS PER DAY	0.00
AV QUEUE DELAY/DAY (VEH-H)	0.0
AV TOTAL DELAY/DAY (VEH-H)	0.0

----- SITE ACCIDENT DELAYS -----	
BREAKDOWN DURATION (MINS)	0
RANGE OF QUEUE DELAY - MIN (VEH-H) MAX	0
AV BREAKDOWNS PER DAY	0
AV QUEUE DELAY/DAY (VEH-H)	0
AV TOTAL DELAY/DAY (VEH-H)	0

AVERAGE ACCIDENT NUMBERS (PIA/DAY)	
MAIN ROUTE WITHOUT WORKS	0.0071
MAIN ROUTE WITH WORKS	0.0056
'DIVERSION'	0.0005
<small>PIA: Personal Injury Accidents</small>	
IMPACTS ON ROAD USERS	
ROAD USER COSTS PER DAY	\$24,458
CONGESTED HOURS PER DAY*	3

*Delays Exceeding User-Specified Maximum

**USH 151: CTH PD TO CTH PB (DANE COUNTY)
CONTINUOUS (24 HOUR) CLOSURE
NO DIVERSION ROUTE (MAX QUEUE METHOD)**

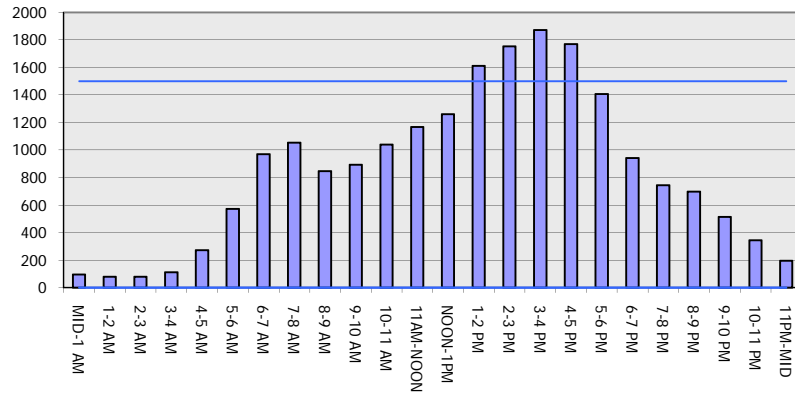
OCTOBER

Analyzed for 2009
Construction Season

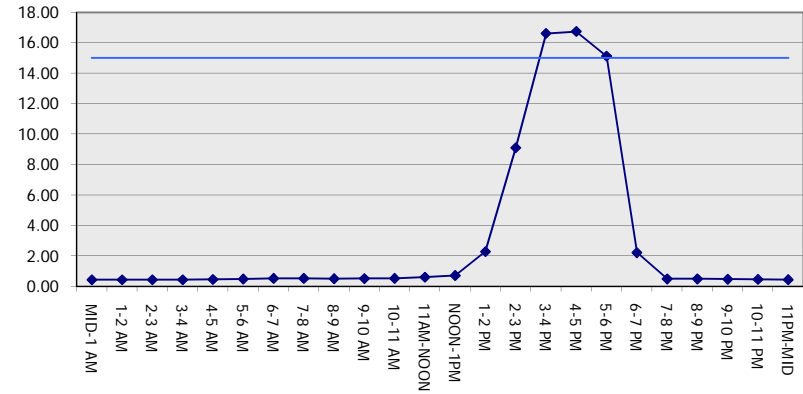
GRAPHICAL REPRESENTATION OF TRAFFIC MODEL INPUT AND OUTPUT

FRIDAY WESTBOUND DIRECTION

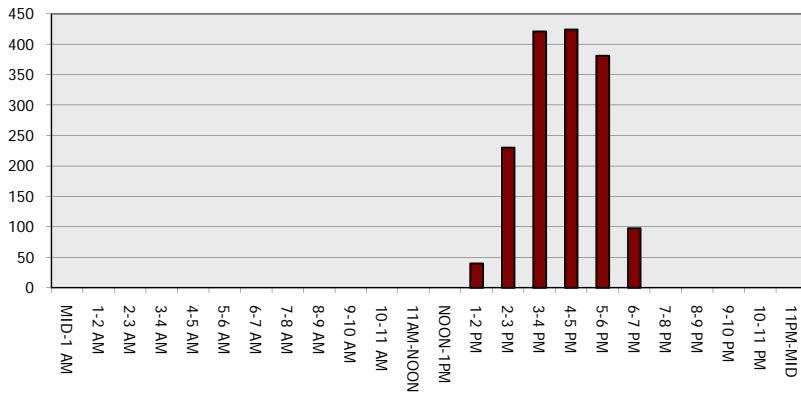
Main Route - Traffic Demand (Vehicles Per Hour)



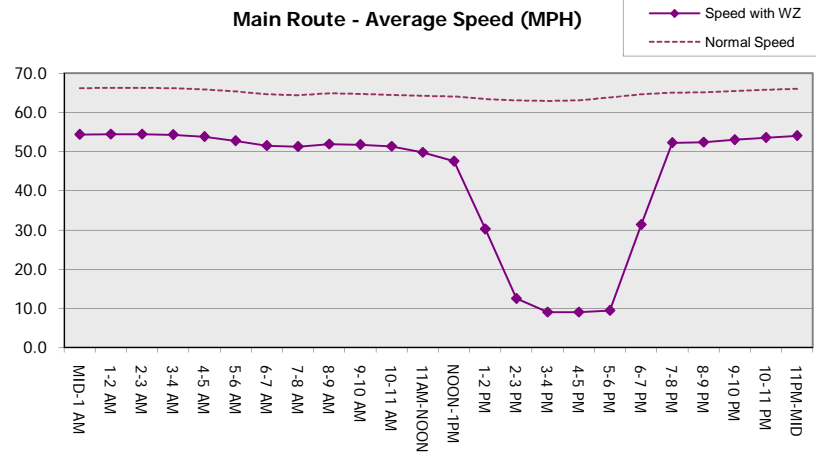
Main Route Average Delay Per Vehicle (Minutes)



Main Route - Average Queue Length (Vehicles)



Main Route - Average Speed (MPH)



USH 151: CTH PD TO CTH PB (DANE COUNTY) CONTINUOUS (24 HOUR) CLOSURE NO DIVERSION ROUTE (MAX QUEUE METHOD)	OCTOBER
	Analyzed for 2009 Construction Season

SUMMARY OF TRAFFIC MODEL OUTPUT

FRIDAY EASTBOUND DIRECTION

TIME OF DAY	FLOWS AND CAPACITY IN VEH/HR						AVERAGE SPEEDS IN MPH			
	MAIN ROUTE		SITE CAPA CITY	FLOW		AV.DEL PER VEH (MINS)	AVERAGE QUEUE (VEH)	MAIN ROUTE		SITE
	DEMAND FLOW	PCT HEAVY		MAIN ROUTE	'DIVER TED'			WITHOUT WORK ZONE	WITH WORK ZONE	
MID-1 AM	68	0.0	1500	68	0	0.43	0	66.3	54.5	45.2
1-2 AM	62	0.0	1500	62	0	0.43	0	66.3	54.5	45.3
2-3 AM	104	0.0	1500	104	0	0.43	0	66.2	54.4	45.1
3-4 AM	222	0.0	1500	222	0	0.44	0	66.0	54.0	44.6
4-5 AM	751	0.0	1500	751	0	0.50	0	65.0	52.2	42.5
5-6 AM	1538	0.0	1499	1538	0	1.54	19	63.5	36.5	31.7
6-7 AM	1724	0.0	1500	1724	0	7.76	193	63.2	13.8	30.8
7-8 AM	1473	0.0	1499	1473	0	12.50	309	63.7	10.3	30.8
8-9 AM	1096	0.0	1499	1096	0	2.69	105	64.3	28.1	37.3
9-10 AM	1065	0.0	1500	1065	0	0.53	0	64.4	51.2	41.4
10-11 AM	1132	0.0	1500	1132	0	0.55	0	64.3	50.7	40.7
11AM-NOON	1123	0.0	1500	1123	0	0.54	0	64.3	51.0	41.1
NOON-1PM	1188	0.0	1500	1188	0	0.62	0	64.1	49.3	38.9
1-2 PM	1224	0.0	1500	1224	0	0.67	0	64.1	48.4	37.7
2-3 PM	1330	0.0	1500	1330	0	0.80	0	63.9	46.0	34.7
3-4 PM	1343	0.0	1500	1343	0	0.82	0	63.9	45.7	34.3
4-5 PM	1398	0.0	1500	1398	0	0.89	0	63.8	44.5	33.0
5-6 PM	1126	0.0	1500	1126	0	0.54	0	64.3	50.9	41.0
6-7 PM	715	0.0	1500	715	0	0.49	0	65.1	52.4	42.7
7-8 PM	513	0.0	1500	513	0	0.47	0	65.5	53.0	43.5
8-9 PM	472	0.0	1500	472	0	0.47	0	65.5	53.2	43.6
9-10 PM	376	0.0	1500	376	0	0.46	0	65.7	53.5	44.0
10-11 PM	218	0.0	1500	218	0	0.44	0	66.0	54.0	44.6
11PM-MID	135	0.0	1500	135	0	0.44	0	66.1	54.3	45.0

----- SITE BREAKDOWN DELAYS -----	
BREAKDOWN DURATION (MINS)	0
RANGE OF QUEUE DELAY - MIN (VEH-H) MAX	0.0
AV BREAKDOWNS PER DAY	0.00
AV QUEUE DELAY/DAY (VEH-H)	0.0
AV TOTAL DELAY/DAY (VEH-H)	0.0

----- SITE ACCIDENT DELAYS -----	
BREAKDOWN DURATION (MINS)	0
RANGE OF QUEUE DELAY - MIN (VEH-H) MAX	0
AV BREAKDOWNS PER DAY	0
AV QUEUE DELAY/DAY (VEH-H)	0
AV TOTAL DELAY/DAY (VEH-H)	0

AVERAGE ACCIDENT NUMBERS (PIA/DAY)	
MAIN ROUTE WITHOUT WORKS	0.0071
MAIN ROUTE WITH WORKS	0.0058
'DIVERSION'	0.0000

PIA: Personal Injury Accidents

ECONOMIC IMPACT ON ROAD USERS	
ROAD USER COSTS PER DAY	\$10,316
CONGESTED HOURS PER DAY*	0

*Delays Exceeding User-Specified Maximum

**USH 151: CTH PD TO CTH PB (DANE COUNTY)
CONTINUOUS (24 HOUR) CLOSURE
NO DIVERSION ROUTE (MAX QUEUE METHOD)**

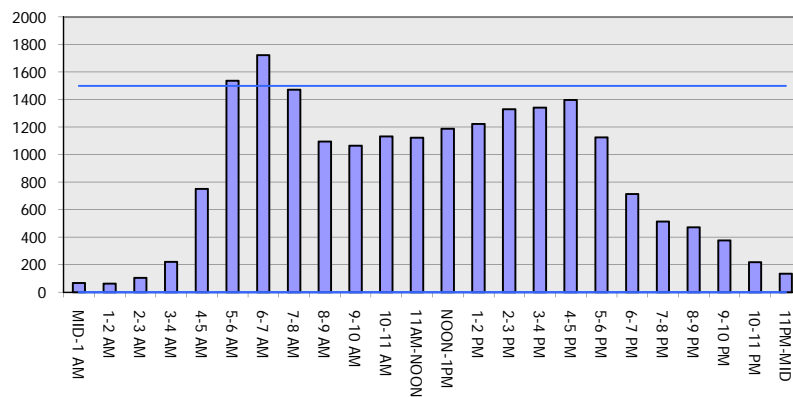
OCTOBER

Analyzed for 2009
Construction Season

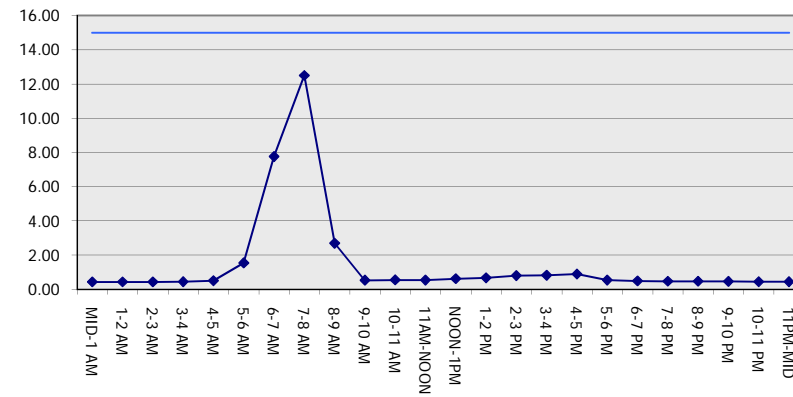
GRAPHICAL REPRESENTATION OF TRAFFIC MODEL INPUT AND OUTPUT

FRIDAY EASTBOUND DIRECTION

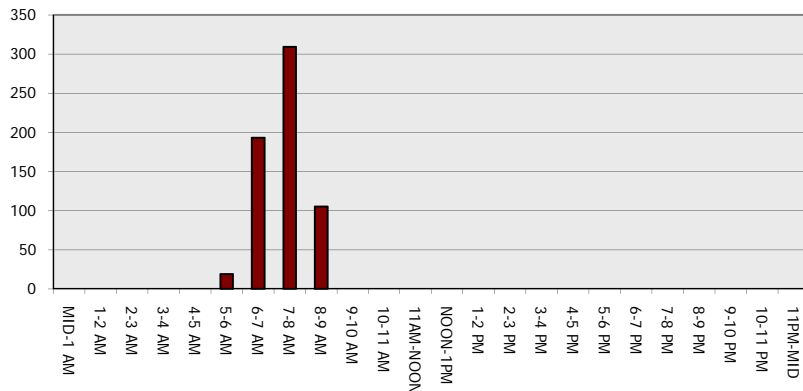
Main Route - Traffic Demand (Vehicles Per Hour)



Main Route Average Delay Per Vehicle (Minutes)



Main Route - Average Queue Length (Vehicles)



Main Route - Average Speed (MPH)

