

USH 151: CTH PD TO CTH PB (DANE COUNTY) CONTINUOUS (24 HOUR) CLOSURE NO DIVERSION ROUTE (MAX QUEUE METHOD)	AUGUST
	Analyzed for 2009 Construction Season

SUMMARY OF TRAFFIC MODEL OUTPUT

SATURDAY WESTBOUND DIRECTION

TIME OF DAY	FLOWS AND CAPACITY IN VEH/HR						AVERAGE SPEEDS IN MPH			
	MAIN ROUTE		SITE CAPA CITY	FLOW		AV.DEL PER VEH (MINS)	AVERAGE QUEUE (VEH)	MAIN ROUTE		SITE
	DEMAND FLOW	PCT HEAVY		MAIN ROUTE	'DIVER TED'			WITHOUT WORK ZONE	WITH WORK ZONE	
MID-1 AM	133	0.0	1500	133	0	0.44	0	66.1	54.3	45.0
1-2 AM	99	0.0	1500	99	0	0.43	0	66.2	54.4	45.1
2-3 AM	84	0.0	1500	84	0	0.43	0	66.2	54.5	45.1
3-4 AM	80	0.0	1500	80	0	0.43	0	66.3	54.5	45.1
4-5 AM	200	0.0	1500	200	0	0.44	0	66.0	54.1	44.7
5-6 AM	258	0.0	1500	258	0	0.45	0	65.9	53.8	44.5
6-7 AM	432	0.0	1500	432	0	0.46	0	65.6	53.3	43.8
7-8 AM	630	0.0	1500	630	0	0.48	0	65.2	52.7	43.0
8-9 AM	864	0.0	1500	864	0	0.51	0	64.8	51.9	42.2
9-10 AM	1010	0.0	1500	1010	0	0.52	0	64.5	51.4	41.7
10-11 AM	1138	0.0	1500	1138	0	0.56	0	64.3	50.5	40.6
11AM-NOON	1101	0.0	1500	1101	0	0.53	0	64.3	51.2	41.3
NOON-1PM	1111	0.0	1500	1111	0	0.53	0	64.3	51.1	41.3
1-2 PM	1053	0.0	1500	1053	0	0.52	0	64.4	51.3	41.5
2-3 PM	986	0.0	1500	986	0	0.52	0	64.5	51.5	41.7
3-4 PM	1013	0.0	1500	1013	0	0.52	0	64.5	51.4	41.6
4-5 PM	880	0.0	1500	880	0	0.51	0	64.8	51.9	42.1
5-6 PM	747	0.0	1500	747	0	0.49	0	65.0	52.2	42.6
6-7 PM	599	0.0	1500	599	0	0.48	0	65.3	52.7	43.2
7-8 PM	567	0.0	1500	567	0	0.48	0	65.3	52.8	43.2
8-9 PM	524	0.0	1500	524	0	0.47	0	65.4	53.0	43.4
9-10 PM	407	0.0	1500	407	0	0.46	0	65.6	53.3	43.8
10-11 PM	319	0.0	1500	319	0	0.45	0	65.8	53.7	44.2
11PM-MID	196	0.0	1500	196	0	0.44	0	66.0	54.1	44.7

----- SITE BREAKDOWN DELAYS -----

BREAKDOWN DURATION (MINS)	0
RANGE OF QUEUE DELAY - MIN (VEH-H) MAX	0.0
AV BREAKDOWNS PER DAY	0.00
AV QUEUE DELAY/DAY (VEH-H)	0.0
AV TOTAL DELAY/DAY (VEH-H)	0.0

----- SITE ACCIDENT DELAYS -----

BREAKDOWN DURATION (MINS)	0
RANGE OF QUEUE DELAY - MIN (VEH-H) MAX	0
AV BREAKDOWNS PER DAY	0
AV QUEUE DELAY/DAY (VEH-H)	0
AV TOTAL DELAY/DAY (VEH-H)	0

AVERAGE ACCIDENT NUMBERS (PIA/DAY)

MAIN ROUTE WITHOUT WORKS	0.0051
MAIN ROUTE WITH WORKS	0.0041
'DIVERSION'	0.0000

PIA: Personal Injury Accidents

IMPACTS ON ROAD USERS

ROAD USER COSTS PER DAY	\$1,833
CONGESTED HOURS PER DAY*	0

*Delays Exceeding User-Specified Maximum

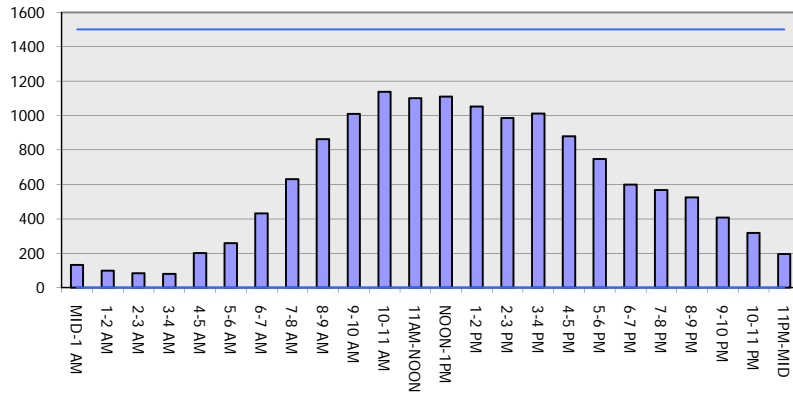
**USH 151: CTH PD TO CTH PB (DANE COUNTY)
CONTINUOUS (24 HOUR) CLOSURE
NO DIVERSION ROUTE (MAX QUEUE METHOD)**

AUGUST

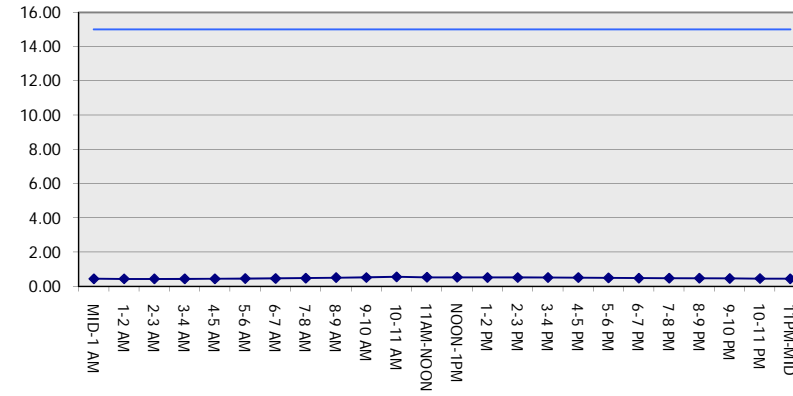
Analyzed for 2009
Construction Season

GRAPHICAL REPRESENTATION OF TRAFFIC MODEL INPUT AND OUTPUT
SATURDAY WESTBOUND DIRECTION

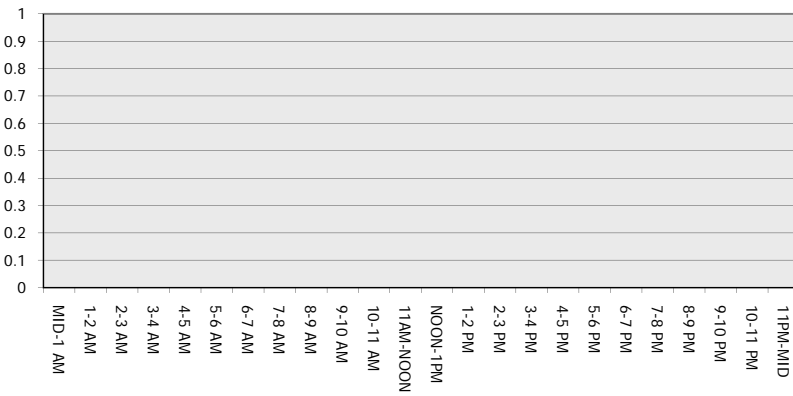
Main Route - Traffic Demand (Vehicles Per Hour)



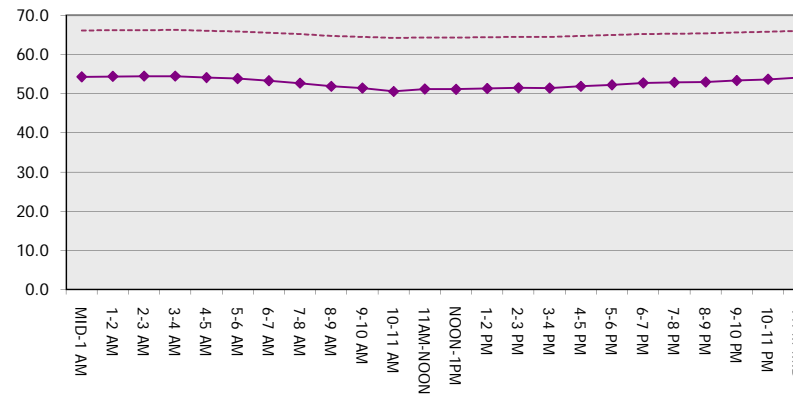
Main Route Average Delay Per Vehicle (Minutes)



Main Route - Average Queue Length (Vehicles)



Main Route - Average Speed (MPH)



USH 151: CTH PD TO CTH PB (DANE COUNTY) CONTINUOUS (24 HOUR) CLOSURE NO DIVERSION ROUTE (MAX QUEUE METHOD)	AUGUST
	Analyzed for 2009 Construction Season

SUMMARY OF TRAFFIC MODEL OUTPUT

SATURDAY EASTBOUND DIRECTION

TIME OF DAY	FLOWS AND CAPACITY IN VEH/HR							AVERAGE SPEEDS IN MPH		
	MAIN ROUTE		SITE CAPA CITY	FLOW		AV.DEL PER VEH (MINS)	AVERAGE QUEUE (VEH)	MAIN ROUTE		SITE
	DEMAND FLOW	PCT HEAVY		MAIN ROUTE	'DIVER TED'			WITHOUT WORK ZONE	WITH WORK ZONE	
MID-1 AM	85	0.0	1500	85	0	0.43	0	66.2	54.5	45.1
1-2 AM	81	0.0	1500	81	0	0.43	0	66.3	54.5	45.1
2-3 AM	54	0.0	1500	54	0	0.43	0	66.3	54.6	45.3
3-4 AM	93	0.0	1500	93	0	0.43	0	66.2	54.4	45.1
4-5 AM	240	0.0	1500	240	0	0.45	0	66.0	53.9	44.5
5-6 AM	403	0.0	1500	403	0	0.46	0	65.6	53.4	43.9
6-7 AM	582	0.0	1500	582	0	0.48	0	65.3	52.8	43.2
7-8 AM	826	0.0	1500	826	0	0.50	0	64.8	52.0	42.3
8-9 AM	972	0.0	1500	972	0	0.52	0	64.6	51.5	41.8
9-10 AM	1177	0.0	1500	1177	0	0.61	0	64.2	49.6	39.2
10-11 AM	1216	0.0	1500	1216	0	0.66	0	64.1	48.6	37.9
11AM-NOON	1145	0.0	1500	1145	0	0.57	0	64.3	50.4	40.3
NOON-1PM	1072	0.0	1500	1072	0	0.53	0	64.4	51.2	41.4
1-2 PM	1015	0.0	1500	1015	0	0.52	0	64.5	51.4	41.6
2-3 PM	937	0.0	1500	937	0	0.51	0	64.6	51.7	41.9
3-4 PM	928	0.0	1500	928	0	0.51	0	64.6	51.7	41.9
4-5 PM	879	0.0	1500	879	0	0.51	0	64.8	51.9	42.1
5-6 PM	755	0.0	1500	755	0	0.50	0	65.0	52.2	42.5
6-7 PM	597	0.0	1500	597	0	0.48	0	65.3	52.7	43.2
7-8 PM	522	0.0	1500	522	0	0.47	0	65.4	53.0	43.4
8-9 PM	453	0.0	1500	453	0	0.47	0	65.5	53.2	43.7
9-10 PM	352	0.0	1500	352	0	0.46	0	65.7	53.5	44.1
10-11 PM	221	0.0	1500	221	0	0.44	0	66.0	54.0	44.6
11PM-MID	139	0.0	1500	139	0	0.44	0	66.1	54.3	45.0

----- SITE BREAKDOWN DELAYS -----	
BREAKDOWN DURATION (MINS)	0
RANGE OF QUEUE DELAY - MIN (VEH-H) MAX	0.0
AV BREAKDOWNS PER DAY	0.00
AV QUEUE DELAY/DAY (VEH-H)	0.0
AV TOTAL DELAY/DAY (VEH-H)	0.0

----- SITE ACCIDENT DELAYS -----	
BREAKDOWN DURATION (MINS)	0
RANGE OF QUEUE DELAY - MIN (VEH-H) MAX	0
AV BREAKDOWNS PER DAY	0
AV QUEUE DELAY/DAY (VEH-H)	0
AV TOTAL DELAY/DAY (VEH-H)	0

AVERAGE ACCIDENT NUMBERS (PIA/DAY)	
MAIN ROUTE WITHOUT WORKS	0.0052
MAIN ROUTE WITH WORKS	0.0042
'DIVERSION'	0.0000

PIA: Personal Injury Accidents

ECONOMIC IMPACT ON ROAD USERS	
ROAD USER COSTS PER DAY	\$1,949
CONGESTED HOURS PER DAY*	0

*Delays Exceeding User-Specified Maximum

**USH 151: CTH PD TO CTH PB (DANE COUNTY)
CONTINUOUS (24 HOUR) CLOSURE
NO DIVERSION ROUTE (MAX QUEUE METHOD)**

AUGUST

Analyzed for 2009
Construction Season

GRAPHICAL REPRESENTATION OF TRAFFIC MODEL INPUT AND OUTPUT
SATURDAY EASTBOUND DIRECTION

