

USH 151: CTH PD TO CTH PB (DANE COUNTY) CONTINUOUS (24 HOUR) CLOSURE NO DIVERSION ROUTE (MAX QUEUE METHOD)	AUGUST
	Analyzed for 2009 Construction Season

SUMMARY OF TRAFFIC MODEL OUTPUT

MON-THUR WESTBOUND DIRECTION

TIME OF DAY	FLOWS AND CAPACITY IN VEH/HR							AVERAGE SPEEDS IN MPH			
	MAIN ROUTE		SITE CAPA CITY	FLOW		AV.DEL PER VEH (MINS)	AVERAGE QUEUE (VEH)	MAIN ROUTE		SITE	
	DEMAND FLOW	PCT HEAVY		MAIN ROUTE	'DIVER TED'			WITHOUT WORK ZONE	WITH WORK ZONE		
MID-1 AM	83	0.0	1500	83	0	0.43	0	66.2	54.5	45.1	
1-2 AM	75	0.0	1500	75	0	0.43	0	66.3	54.5	45.2	
2-3 AM	82	0.0	1500	82	0	0.43	0	66.3	54.5	45.1	
3-4 AM	112	0.0	1500	112	0	0.43	0	66.2	54.3	45.0	
4-5 AM	308	0.0	1500	308	0	0.45	0	65.8	53.7	44.3	
5-6 AM	619	0.0	1500	619	0	0.48	0	65.2	52.7	43.0	
6-7 AM	924	0.0	1500	924	0	0.51	0	64.6	51.7	41.9	
7-8 AM	978	0.0	1500	978	0	0.52	0	64.6	51.5	41.7	
8-9 AM	840	0.0	1500	840	0	0.50	0	64.8	52.0	42.2	
9-10 AM	842	0.0	1500	842	0	0.50	0	64.8	52.0	42.2	
10-11 AM	905	0.0	1500	905	0	0.51	0	64.7	51.7	42.0	
11AM-NOON	970	0.0	1500	970	0	0.52	0	64.6	51.5	41.8	
NOON-1PM	998	0.0	1500	998	0	0.52	0	64.5	51.5	41.7	
1-2 PM	1254	0.0	1499	1254	0	0.70	0	64.0	47.8	36.9	
2-3 PM	1500	0.0	1499	1500	0	1.25	8	63.6	39.7	31.5	
3-4 PM	1786	0.0	1500	1786	0	6.50	169	63.0	15.8	30.8	
4-5 PM	1727	0.0	1499	1595	132	15.95+	404	63.2	9.2	30.8	
5-6 PM	1178	0.0	1499	1178	0	10.60+	281	64.2	11.6	32.9	
6-7 PM	808	0.0	1500	808	0	0.65	6	64.9	49.2	42.4	
7-8 PM	698	0.0	1500	698	0	0.49	0	65.1	52.4	42.8	
8-9 PM	561	0.0	1500	561	0	0.48	0	65.3	52.8	43.3	
9-10 PM	404	0.0	1500	404	0	0.46	0	65.6	53.3	43.9	
10-11 PM	248	0.0	1500	248	0	0.45	0	66.0	53.9	44.5	
11PM-MID	150	0.0	1500	150	0	0.44	0	66.1	54.2	44.9	

+ INDICATES QUEUEING EXCEEDS USER-SPECIFIED MAXIMUM LIMIT

----- SITE BREAKDOWN DELAYS -----	
BREAKDOWN DURATION (MINS)	0
RANGE OF QUEUE DELAY - MIN (VEH-H) MAX	0.0
AV BREAKDOWNS PER DAY	0.00
AV QUEUE DELAY/DAY (VEH-H)	0.0
AV TOTAL DELAY/DAY (VEH-H)	0.0

----- SITE ACCIDENT DELAYS -----	
BREAKDOWN DURATION (MINS)	0
RANGE OF QUEUE DELAY - MIN (VEH-H) MAX	0
AV BREAKDOWNS PER DAY	0
AV QUEUE DELAY/DAY (VEH-H)	0
AV TOTAL DELAY/DAY (VEH-H)	0

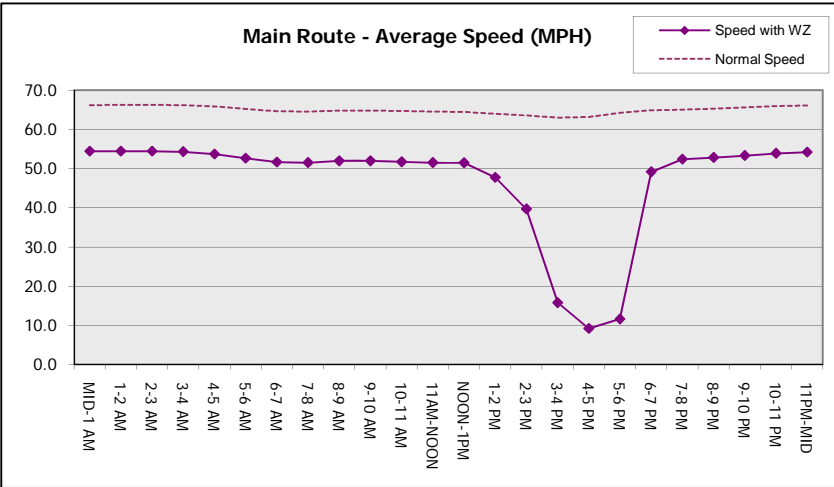
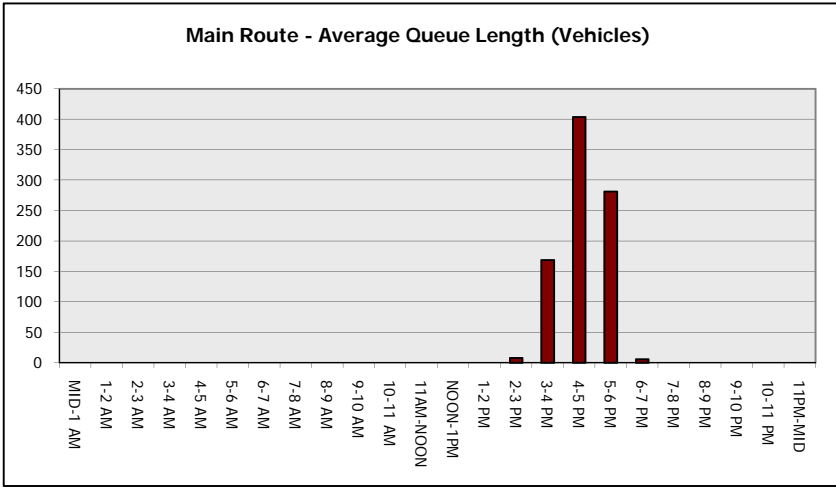
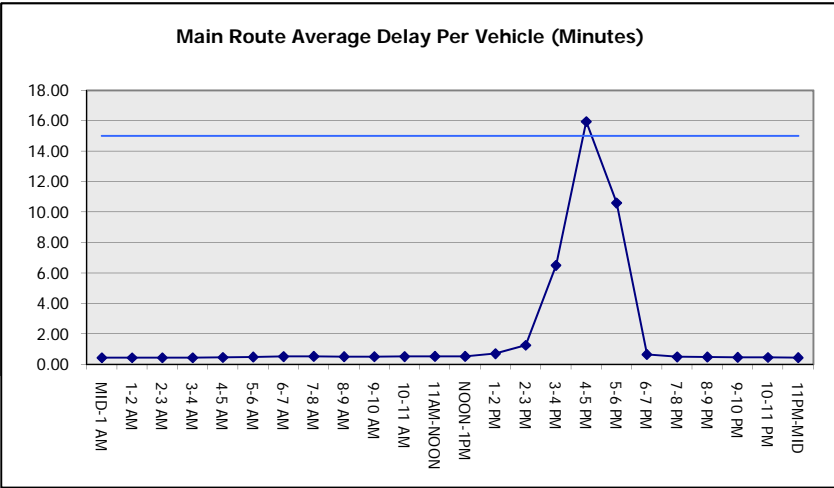
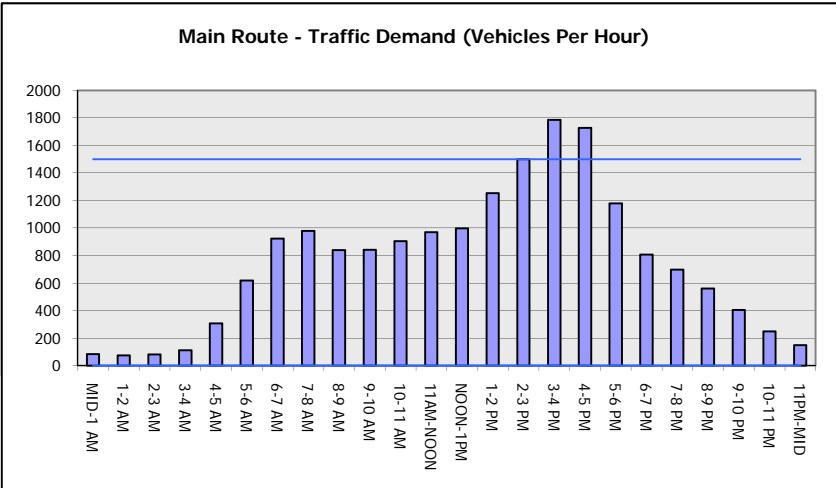
AVERAGE ACCIDENT NUMBERS (PIA/DAY)	
MAIN ROUTE WITHOUT WORKS	0.0063
MAIN ROUTE WITH WORKS	0.0051
'DIVERSION'	0.0001
PIA: Personal Injury Accidents	
IMPACTS ON ROAD USERS	
ROAD USER COSTS PER DAY	\$12,671
CONGESTED HOURS PER DAY*	2

*Delays Exceeding User-Specified Maximum

**USH 151: CTH PD TO CTH PB (DANE COUNTY)
CONTINUOUS (24 HOUR) CLOSURE
NO DIVERSION ROUTE (MAX QUEUE METHOD)**

AUGUST
Analyzed for 2009
Construction Season

GRAPHICAL REPRESENTATION OF TRAFFIC MODEL INPUT AND OUTPUT
MON-THUR WESTBOUND DIRECTION



USH 151: CTH PD TO CTH PB (DANE COUNTY) CONTINUOUS (24 HOUR) CLOSURE NO DIVERSION ROUTE (MAX QUEUE METHOD)	AUGUST
	Analyzed for 2009 Construction Season

SUMMARY OF TRAFFIC MODEL OUTPUT

MON-THUR EASTBOUND DIRECTION

TIME OF DAY	FLOWS AND CAPACITY IN VEH/HR							AVERAGE SPEEDS IN MPH		
	MAIN ROUTE		SITE CAPA CITY	FLOW		AV.DEL PER VEH (MINS)	AVERAGE QUEUE (VEH)	MAIN ROUTE		SITE
	DEMAND FLOW	PCT HEAVY		MAIN ROUTE	'DIVER TED'			WITHOUT WORK ZONE	WITH WORK ZONE	
MID-1 AM	73	0.0	1500	73	0	0.43	0	66.3	54.5	45.2
1-2 AM	60	0.0	1500	60	0	0.43	0	66.3	54.5	45.3
2-3 AM	92	0.0	1500	92	0	0.43	0	66.2	54.4	45.1
3-4 AM	226	0.0	1500	226	0	0.44	0	66.0	54.0	44.6
4-5 AM	872	0.0	1500	872	0	0.51	0	64.8	51.9	42.1
5-6 AM	1632	0.0	1499	1632	0	1.93	33	63.3	32.9	30.8
6-7 AM	1898	0.0	1500	1788	111	12.41+	323	62.8	10.6	30.8
7-8 AM	1399	0.0	1500	1399	0	15.64+	395	63.8	9.3	30.8
8-9 AM	1053	0.0	1499	1053	0	2.99	123	64.4	26.6	37.6
9-10 AM	996	0.0	1500	996	0	0.52	0	64.5	51.5	41.7
10-11 AM	1007	0.0	1500	1007	0	0.52	0	64.5	51.4	41.7
11AM-NOON	1031	0.0	1500	1031	0	0.52	0	64.5	51.4	41.5
NOON-1PM	1050	0.0	1500	1050	0	0.52	0	64.4	51.3	41.5
1-2 PM	1037	0.0	1500	1037	0	0.52	0	64.5	51.4	41.5
2-3 PM	1097	0.0	1500	1097	0	0.53	0	64.3	51.2	41.4
3-4 PM	1116	0.0	1500	1116	0	0.53	0	64.3	51.1	41.3
4-5 PM	1204	0.0	1500	1204	0	0.64	0	64.1	48.9	38.3
5-6 PM	870	0.0	1500	870	0	0.51	0	64.8	51.9	42.2
6-7 PM	618	0.0	1500	618	0	0.48	0	65.2	52.7	43.0
7-8 PM	499	0.0	1500	499	0	0.47	0	65.5	53.0	43.5
8-9 PM	443	0.0	1500	443	0	0.47	0	65.6	53.2	43.7
9-10 PM	300	0.0	1500	300	0	0.45	0	65.8	53.7	44.3
10-11 PM	179	0.0	1500	179	0	0.44	0	66.1	54.2	44.8
11PM-MID	114	0.0	1500	114	0	0.43	0	66.2	54.3	45.0

+ INDICATES QUEUEING EXCEEDS USER-SPECIFIED MAXIMUM LIMIT

----- SITE BREAKDOWN DELAYS -----	
BREAKDOWN DURATION (MINS)	0
RANGE OF QUEUE DELAY - MIN	0.0
(VEH-H) MAX	0.0
AV BREAKDOWNS PER DAY	0.00
AV QUEUE DELAY/DAY (VEH-H)	0.0
AV TOTAL DELAY/DAY (VEH-H)	0.0

----- SITE ACCIDENT DELAYS -----	
BREAKDOWN DURATION (MINS)	0
RANGE OF QUEUE DELAY - MIN	0
(VEH-H) MAX	0
AV BREAKDOWNS PER DAY	0
AV QUEUE DELAY/DAY (VEH-H)	0
AV TOTAL DELAY/DAY (VEH-H)	0

AVERAGE ACCIDENT NUMBERS (PIA/DAY)	
MAIN ROUTE WITHOUT WORKS	0.0066
MAIN ROUTE WITH WORKS	0.0053
'DIVERSION'	0.0001

PIA: Personal Injury Accidents

ECONOMIC IMPACT ON ROAD USERS	
ROAD USER COSTS PER DAY	\$12,383
CONGESTED HOURS PER DAY*	2

*Delays Exceeding User-Specified Maximum

**USH 151: CTH PD TO CTH PB (DANE COUNTY)
CONTINUOUS (24 HOUR) CLOSURE
NO DIVERSION ROUTE (MAX QUEUE METHOD)**

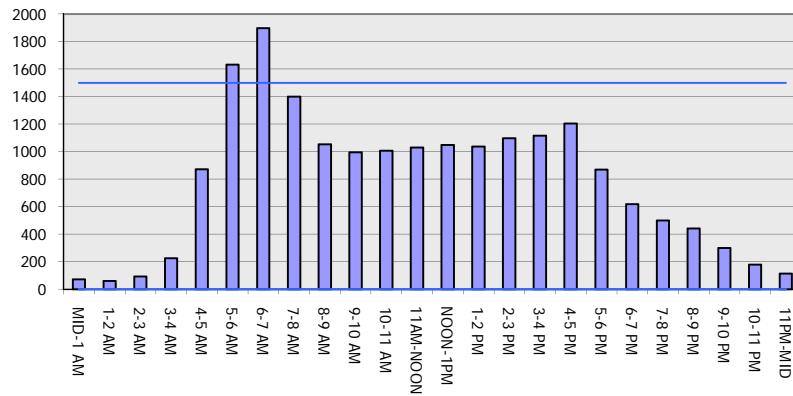
AUGUST

Analyzed for 2009
Construction Season

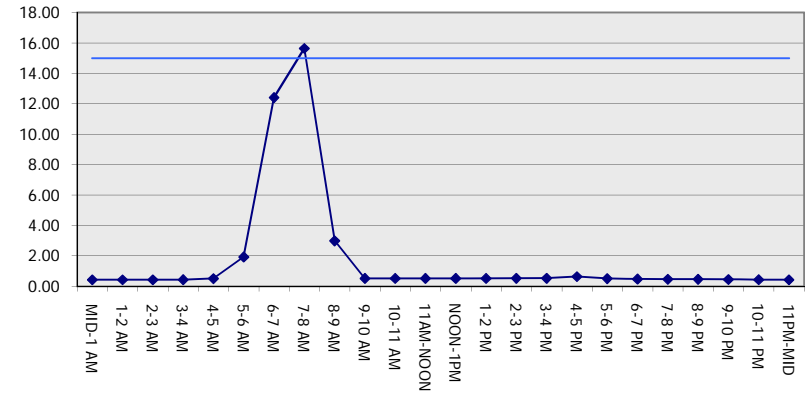
GRAPHICAL REPRESENTATION OF TRAFFIC MODEL INPUT AND OUTPUT

MON-THUR EASTBOUND DIRECTION

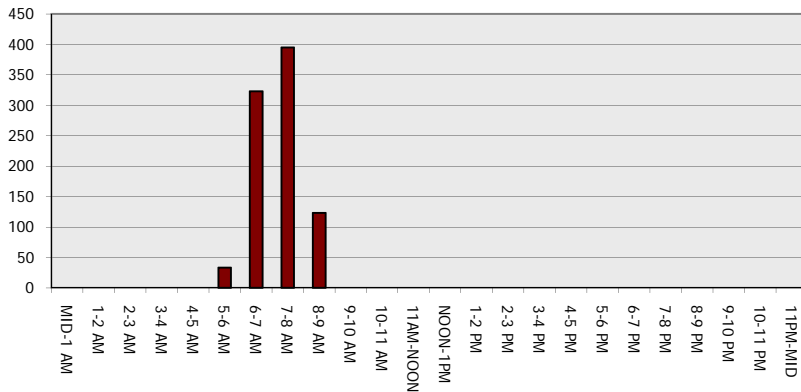
Main Route - Traffic Demand (Vehicles Per Hour)



Main Route Average Delay Per Vehicle (Minutes)



Main Route - Average Queue Length (Vehicles)



Main Route - Average Speed (MPH)

