

<b>IH 94: USH 18 TO CTH O (WAUKESHA COUNTY)                  NIGHTTIME 2 LANE CLOSURE                  NO DIVERSION (MAX QUEUE METHOD)</b>	<b>OCTOBER</b>
	Analyzed for 2009 Construction Season

**SUMMARY OF TRAFFIC MODEL OUTPUT**

SUNDAY WESTBOUND DIRECTION

TIME OF DAY	FLOWS AND CAPACITY IN VEH/HR							AVERAGE SPEEDS IN MPH			
	MAIN ROUTE		SITE CAPA CITY	FLOW		AV.DEL PER VEH (MINS)	AVERAGE QUEUE (VEH)	MAIN ROUTE		SITE	
	DEMAND FLOW	PCT HEAVY		MAIN ROUTE	'DIVER TED'			WITHOUT WORK ZONE	WITH WORK ZONE		
MID-1 AM	1031	0.0	1500	1031	0	0.59	0	69.4	57.8	41.5	
1-2 AM	647	0.0	1500	647	0	0.55	0	69.9	58.9	43.0	
2-3 AM	545	0.0	1500	545	0	0.54	0	70.0	59.1	43.3	
3-4 AM	352	0.0	1500	352	0	0.52	0	70.2	59.6	44.1	
4-5 AM	241	0.0	1500	241	0	0.50	0	70.2	59.9	44.5	
5-6 AM	389	0.0	1500	389	0	0.52	0	70.2	59.5	43.9	
6-7 AM	786	0.0	1500	786	0	0.56	0	69.7	58.5	42.4	
7-8 AM	1036	0.0	1500	1036	0	0.59	0	69.4	57.8	41.5	
8-9 AM	1347	0.0	1499	1347	0	0.89	0	69.1	53.0	34.6	
9-10 AM	2080	0.0	OFF	2080	0	0.00	0	68.1	68.1	68.1	
10-11 AM	2866	0.0	OFF	2866	0	0.00	0	67.2	67.2	67.2	
11AM-NOON	3513	0.0	OFF	3513	0	0.00	0	66.4	66.4	66.4	
NOON-1PM	3385	0.0	OFF	3385	0	0.00	0	66.5	66.5	66.5	
1-2 PM	3096	0.0	OFF	3096	0	0.00	0	66.9	66.9	66.9	
2-3 PM	2980	0.0	OFF	2980	0	0.00	0	67.0	67.0	67.0	
3-4 PM	3236	0.0	OFF	3236	0	0.00	0	66.7	66.7	66.7	
4-5 PM	3524	0.0	OFF	3524	0	0.00	0	66.4	66.4	66.4	
5-6 PM	3019	0.0	OFF	3019	0	0.00	0	67.0	67.0	67.0	
6-7 PM	2645	0.0	OFF	2645	0	0.00	0	67.4	67.4	67.4	
7-8 PM	2206	0.0	1499	1913	293	11.78+	303	68.0	13.8	30.8	
8-9 PM	1681	0.0	1500	1491	190	16.33+	398	68.6	10.6	30.8	
9-10 PM	1372	0.0	1499	1372	0	14.40+	351	69.1	11.7	30.8	
10-11 PM	1320	0.0	1500	1320	0	8.66	208	69.1	17.6	31.5	
11PM-MID	639	0.0	1500	639	0	0.68	5	69.9	56.6	43.0	

"OFF" INDICATES NO ROAD WORK (ALL LANES OPEN TO TRAFFIC)

+ INDICATES QUEUEING EXCEEDS USER-SPECIFIED MAXIMUM LIMIT

*----- SITE BREAKDOWN DELAYS -----*	
BREAKDOWN DURATION (MINS)	0
RANGE OF QUEUE DELAY - MIN	0.0
(VEH-H) MAX	0.0
AV BREAKDOWNS PER DAY	0.00
AV QUEUE DELAY/DAY (VEH-H)	0.0
AV TOTAL DELAY/DAY (VEH-H)	0.0

*----- SITE ACCIDENT DELAYS -----*	
BREAKDOWN DURATION (MINS)	0
RANGE OF QUEUE DELAY - MIN	0
(VEH-H) MAX	0
AV BREAKDOWNS PER DAY	0
AV QUEUE DELAY/DAY (VEH-H)	0
AV TOTAL DELAY/DAY (VEH-H)	0

AVERAGE ACCIDENT NUMBERS (PIA/DAY)	
MAIN ROUTE WITHOUT WORKS	0.0238
MAIN ROUTE WITH WORKS	0.0226
'DIVERSION'	0.0006
<small>PIA: Personal Injury Accidents</small>	
IMPACTS ON ROAD USERS	
ROAD USER COSTS PER DAY	\$23,439
CONGESTED HOURS PER DAY*	3

\*Delays Exceeding User-Specified Maximum

**IH 94: USH 18 TO CTH O (WAUKESHA COUNTY)  
NIGHTTIME 2 LANE CLOSURE  
NO DIVERSION (MAX QUEUE METHOD)**

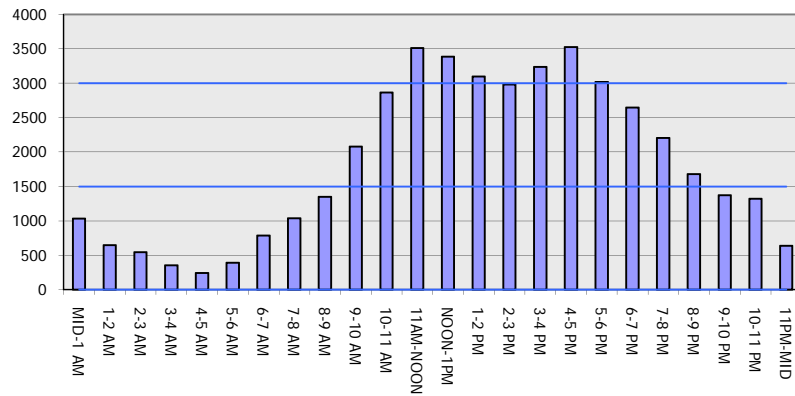
**OCTOBER**

Analyzed for 2009  
Construction Season

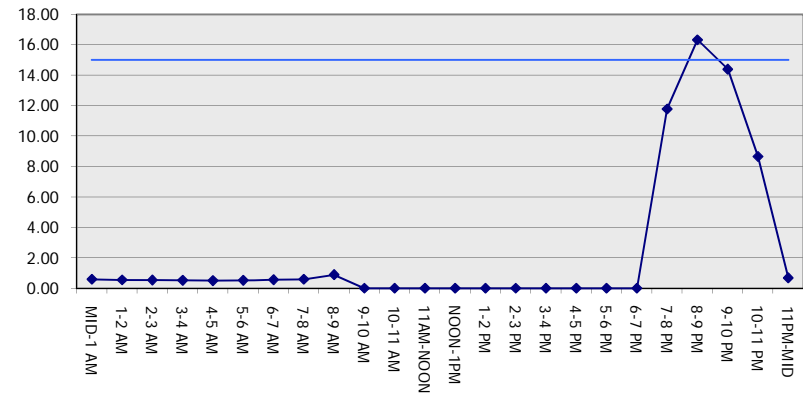
**GRAPHICAL REPRESENTATION OF TRAFFIC MODEL INPUT AND OUTPUT**

**SUNDAY WESTBOUND DIRECTION**

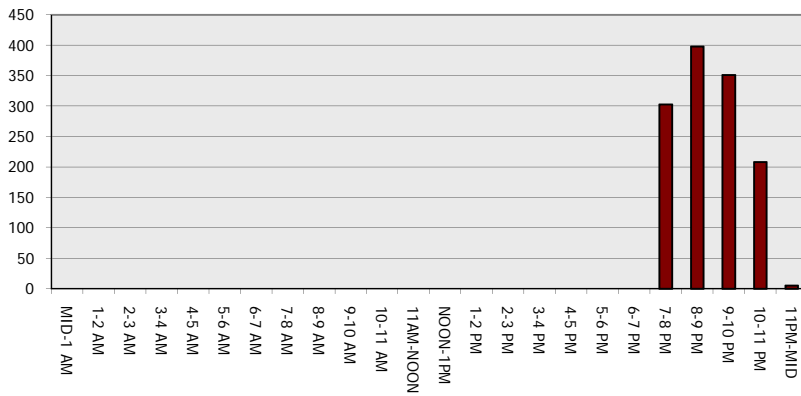
**Main Route - Traffic Demand (Vehicles Per Hour)**



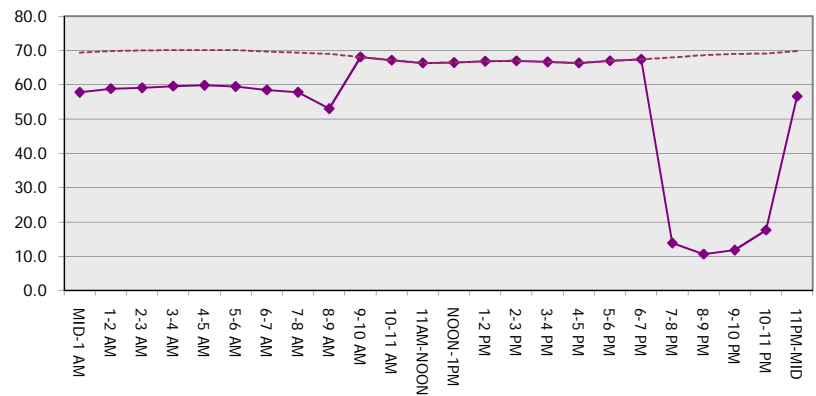
**Main Route Average Delay Per Vehicle (Minutes)**



**Main Route - Average Queue Length (Vehicles)**



**Main Route - Average Speed (MPH)**



<b>IH 94: USH 18 TO CTH O (WAUKESHA COUNTY)                  NIGHTTIME 2 LANE CLOSURE                  NO DIVERSION (MAX QUEUE METHOD)</b>	<b>OCTOBER</b>
	Analyzed for 2009 Construction Season

**SUMMARY OF TRAFFIC MODEL OUTPUT**

SUNDAY EASTBOUND DIRECTION

TIME OF DAY	FLOWS AND CAPACITY IN VEH/HR							AVERAGE SPEEDS IN MPH			
	MAIN ROUTE		SITE CAPA CITY	FLOW		AV.DEL PER VEH (MINS)	AVERAGE QUEUE (VEH)	MAIN ROUTE		SITE	
	DEMAND FLOW	PCT HEAVY		MAIN ROUTE	'DIVER TED'			WITHOUT WORK ZONE	WITH WORK ZONE		
MID-1 AM	1016	0.0	1500	1016	0	0.59	0	69.5	57.9	41.6	
1-2 AM	526	0.0	1500	526	0	0.54	0	70.0	59.2	43.4	
2-3 AM	366	0.0	1500	366	0	0.52	0	70.2	59.6	44.0	
3-4 AM	240	0.0	1500	240	0	0.50	0	70.2	59.9	44.5	
4-5 AM	254	0.0	1500	254	0	0.50	0	70.2	59.8	44.5	
5-6 AM	351	0.0	1500	351	0	0.52	0	70.2	59.6	44.1	
6-7 AM	774	0.0	1500	774	0	0.56	0	69.8	58.5	42.5	
7-8 AM	1137	0.0	1499	1137	0	0.66	0	69.3	56.6	39.6	
8-9 AM	1463	0.0	1499	1463	0	1.31	9	68.9	47.7	32.5	
9-10 AM	2052	0.0	OFF	2052	0	0.00	0	68.2	68.1	68.1	
10-11 AM	2714	0.0	OFF	2714	0	0.00	0	67.4	67.4	67.4	
11AM-NOON	3475	0.0	OFF	3475	0	0.00	0	66.4	66.4	66.4	
NOON-1PM	3526	0.0	OFF	3526	0	0.00	0	66.3	66.3	66.3	
1-2 PM	3310	0.0	OFF	3310	0	0.00	0	66.6	66.6	66.6	
2-3 PM	3383	0.0	OFF	3383	0	0.00	0	66.5	66.5	66.5	
3-4 PM	3454	0.0	OFF	3454	0	0.00	0	66.4	66.4	66.4	
4-5 PM	3189	0.0	OFF	3189	0	0.00	0	66.8	66.8	66.8	
5-6 PM	2984	0.0	OFF	2984	0	0.00	0	67.0	67.0	67.0	
6-7 PM	3459	0.0	OFF	3459	0	0.00	0	66.4	66.4	66.4	
7-8 PM	2668	0.0	1499	1672	996	14.07+	356	67.4	11.9	35.8	
8-9 PM	1989	0.0	1499	1712	278	14.27+	354	68.2	11.8	30.9	
9-10 PM	1647	0.0	1499	1517	130	16.23+	396	68.7	10.6	30.8	
10-11 PM	1090	0.0	1499	1090	0	7.57	228	69.4	19.4	35.3	
11PM-MID	617	0.0	1500	617	0	0.55	0	70.0	58.9	43.0	

"OFF" INDICATES NO ROAD WORK (ALL LANES OPEN TO TRAFFIC)

+ INDICATES QUEUEING EXCEEDS USER-SPECIFIED MAXIMUM LIMIT

BREAKDOWN DURATION (MINS)	0
RANGE OF QUEUE DELAY - MIN (VEH-H) MAX	0.0
AV BREAKDOWNS PER DAY	0.00
AV QUEUE DELAY/DAY (VEH-H)	0.0
AV TOTAL DELAY/DAY (VEH-H)	0.0

BREAKDOWN DURATION (MINS)	0
RANGE OF QUEUE DELAY - MIN (VEH-H) MAX	0
AV BREAKDOWNS PER DAY	0
AV QUEUE DELAY/DAY (VEH-H)	0
AV TOTAL DELAY/DAY (VEH-H)	0

MAIN ROUTE WITHOUT WORKS	0.0247
MAIN ROUTE WITH WORKS	0.0231
'DIVERSION'	0.0018

PIA: Personal Injury Accidents

ROAD USER COSTS PER DAY	\$27,853
CONGESTED HOURS PER DAY*	3

\*Delays Exceeding User-Specified Maximum

**IH 94: USH 18 TO CTH O (WAUKESHA COUNTY)  
 NIGHTTIME 2 LANE CLOSURE  
 NO DIVERSION (MAX QUEUE METHOD)**

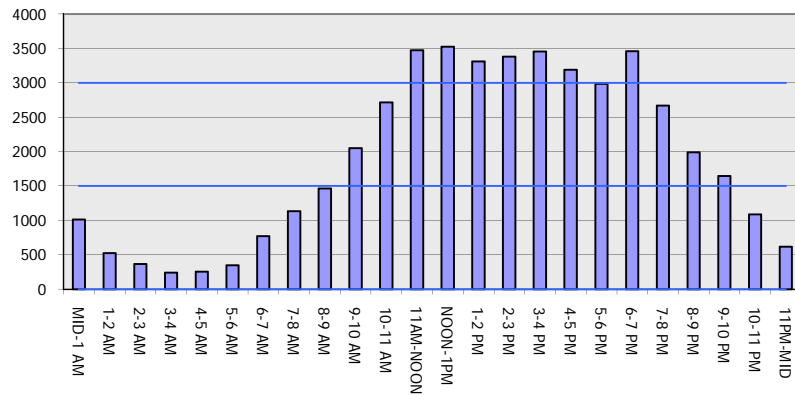
**OCTOBER**

Analyzed for 2009  
 Construction Season

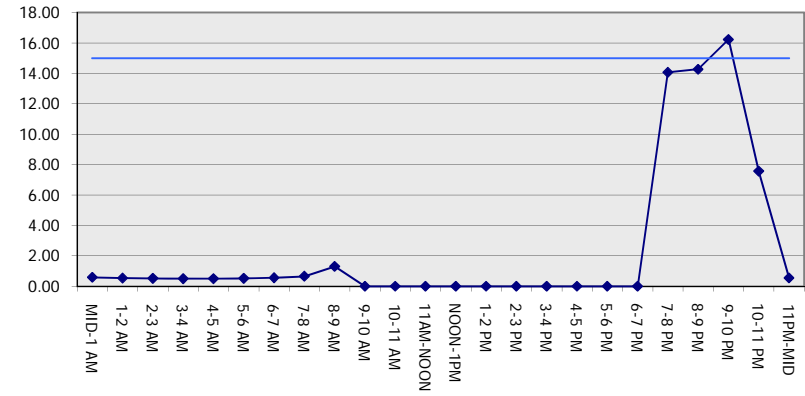
**GRAPHICAL REPRESENTATION OF TRAFFIC MODEL INPUT AND OUTPUT**

**SUNDAY EASTBOUND DIRECTION**

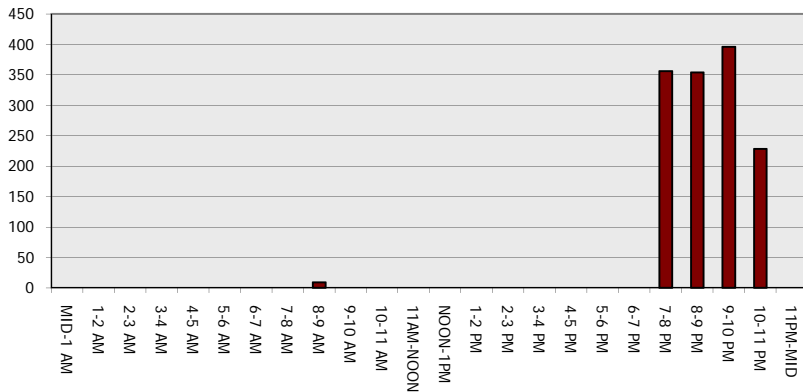
**Main Route - Traffic Demand (Vehicles Per Hour)**



**Main Route Average Delay Per Vehicle (Minutes)**



**Main Route - Average Queue Length (Vehicles)**



**Main Route - Average Speed (MPH)**

