

**IH 94: USH 18 TO CTH O (WAUKESHA COUNTY)
NIGHTTIME 2 LANE CLOSURE
NO DIVERSION (MAX QUEUE METHOD)**

OCTOBER

Analyzed for 2009
Construction Season

SUMMARY OF TRAFFIC MODEL OUTPUT

SATURDAY WESTBOUND DIRECTION

TIME OF DAY	FLOWS AND CAPACITY IN VEH/HR						AVERAGE SPEEDS IN MPH				
	MAIN ROUTE		SITE CAPA CITY	FLOW		AV.DEL PER VEH (MINS)	AVERAGE QUEUE (VEH)	MAIN ROUTE		SITE	
	DEMAND FLOW	PCT HEAVY		MAIN ROUTE	'DIVER TED'			WITHOUT WORK ZONE	WITH WORK ZONE		
MID-1 AM	909	0.0	1499	909	0	2.23	81	69.6	39.5	39.7	
1-2 AM	551	0.0	1500	551	0	0.54	0	70.0	59.1	43.3	
2-3 AM	541	0.0	1500	541	0	0.54	0	70.0	59.1	43.3	
3-4 AM	414	0.0	1500	414	0	0.52	0	70.2	59.5	43.8	
4-5 AM	522	0.0	1500	522	0	0.54	0	70.1	59.2	43.4	
5-6 AM	968	0.0	1499	968	0	0.58	0	69.6	58.0	41.8	
6-7 AM	1536	0.0	1499	1536	0	1.74	24	68.8	43.3	32.2	
7-8 AM	2250	0.0	1500	1780	469	12.41+	319	67.9	13.2	30.8	
8-9 AM	3048	0.0	OFF	3048	0	0.26	24	66.9	61.6	61.6	
9-10 AM	3462	0.0	OFF	3462	0	0.00	0	66.4	66.4	66.4	
10-11 AM	3743	0.0	OFF	3743	0	0.00	0	65.3	65.3	65.3	
11AM-NOON	4124	0.0	OFF	4124	0	0.00	0	62.7	62.7	62.7	
NOON-1PM	4360	0.0	OFF	4360	0	0.00	0	61.0	61.0	61.0	
1-2 PM	4223	0.0	OFF	4223	0	0.00	0	62.0	62.0	62.0	
2-3 PM	4104	0.0	OFF	4104	0	0.00	0	62.8	62.8	62.8	
3-4 PM	3807	0.0	OFF	3807	0	0.00	0	64.8	64.8	64.8	
4-5 PM	3813	0.0	OFF	3813	0	0.00	0	64.8	64.8	64.8	
5-6 PM	3273	0.0	OFF	3273	0	0.00	0	66.7	66.7	66.7	
6-7 PM	3324	0.0	1499	1550	1774	16.47+	412	66.6	10.4	36.6	
7-8 PM	2435	0.0	1499	1740	695	13.35+	344	67.7	12.5	34.9	
8-9 PM	2122	0.0	1499	1593	529	15.97+	391	68.1	10.7	30.8	
9-10 PM	2103	0.0	1500	1500	603	16.34+	400	68.1	10.6	30.8	
10-11 PM	2290	0.0	1500	1500	790	16.33+	400	67.9	10.6	30.8	
11PM-MID	1465	0.0	1500	1397	68	14.93+	365	68.9	11.4	30.8	

"OFF" INDICATES NO ROAD WORK (ALL LANES OPEN TO TRAFFIC)

+ INDICATES QUEUEING EXCEEDS USER-SPECIFIED MAXIMUM LIMIT

----- SITE BREAKDOWN DELAYS -----	
BREAKDOWN DURATION (MINS)	0
RANGE OF QUEUE DELAY - MIN (VEH-H) MAX	0.0
AV BREAKDOWNS PER DAY	0.00
AV QUEUE DELAY/DAY (VEH-H)	0.0
AV TOTAL DELAY/DAY (VEH-H)	0.0

----- SITE ACCIDENT DELAYS -----	
BREAKDOWN DURATION (MINS)	0
RANGE OF QUEUE DELAY - MIN (VEH-H) MAX	0
AV BREAKDOWNS PER DAY	0
AV QUEUE DELAY/DAY (VEH-H)	0
AV TOTAL DELAY/DAY (VEH-H)	0

AVERAGE ACCIDENT NUMBERS (PIA/DAY)	
MAIN ROUTE WITHOUT WORKS	0.0321
MAIN ROUTE WITH WORKS	0.0284
'DIVERSION'	0.0062
PIA: Personal Injury Accidents	
IMPACTS ON ROAD USERS	
ROAD USER COSTS PER DAY	\$63,960
CONGESTED HOURS PER DAY*	7

*Delays Exceeding User-Specified Maximum

**IH 94: USH 18 TO CTH O (WAUKESHA COUNTY)
NIGHTTIME 2 LANE CLOSURE
NO DIVERSION (MAX QUEUE METHOD)**

OCTOBER

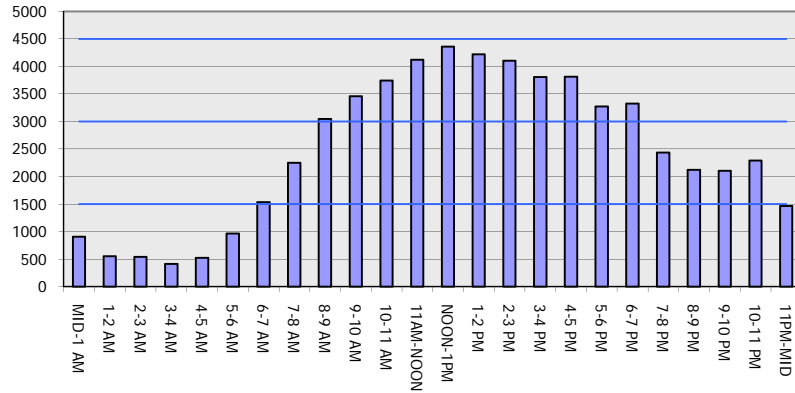
Analyzed for 2009
Construction Season

GRAPHICAL REPRESENTATION OF TRAFFIC MODEL INPUT AND OUTPUT

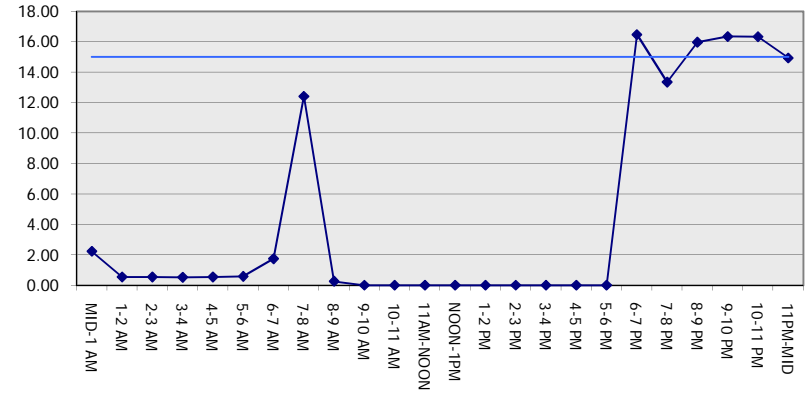
SATURDAY

WESTBOUND DIRECTION

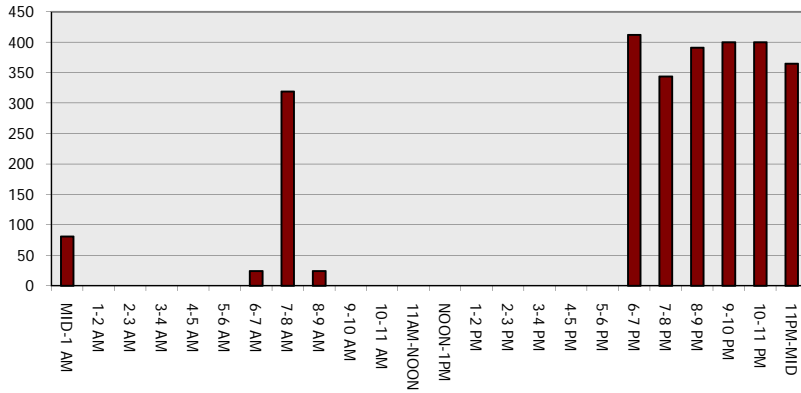
Main Route - Traffic Demand (Vehicles Per Hour)



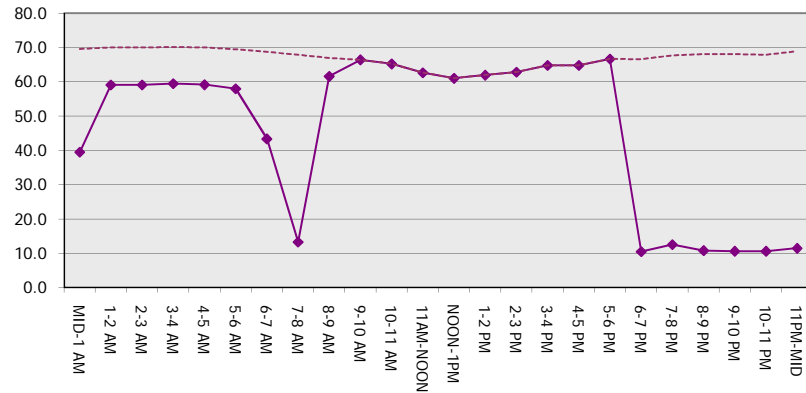
Main Route Average Delay Per Vehicle (Minutes)



Main Route - Average Queue Length (Vehicles)



Main Route - Average Speed (MPH)



IH 94: USH 18 TO CTH O (WAUKESHA COUNTY) NIGHTTIME 2 LANE CLOSURE NO DIVERSION (MAX QUEUE METHOD)	OCTOBER
	Analyzed for 2009 Construction Season

SUMMARY OF TRAFFIC MODEL OUTPUT

SATURDAY EASTBOUND DIRECTION

TIME OF DAY	FLOWS AND CAPACITY IN VEH/HR							AVERAGE SPEEDS IN MPH		
	MAIN ROUTE		SITE CAPA CITY	FLOW		AV.DEL PER VEH (MINS)	AVERAGE QUEUE (VEH)	MAIN ROUTE		SITE
	DEMAND FLOW	PCT HEAVY		MAIN ROUTE	'DIVER TED'			WITHOUT WORK ZONE	WITH WORK ZONE	
MID-1 AM	971	0.0	1499	971	0	4.23	167	69.6	28.4	37.0
1-2 AM	487	0.0	1500	487	0	0.53	0	70.1	59.3	43.5
2-3 AM	377	0.0	1500	377	0	0.52	0	70.2	59.6	44.0
3-4 AM	253	0.0	1500	253	0	0.50	0	70.2	59.8	44.5
4-5 AM	352	0.0	1500	352	0	0.52	0	70.2	59.6	44.1
5-6 AM	803	0.0	1500	803	0	0.57	0	69.7	58.4	42.4
6-7 AM	1320	0.0	1499	1320	0	0.86	0	69.1	53.6	35.3
7-8 AM	1791	0.0	1499	1791	0	4.04	103	68.5	29.1	30.8
8-9 AM	2660	0.0	OFF	2660	0	0.14	12	67.4	64.4	64.4
9-10 AM	3069	0.0	OFF	3069	0	0.00	0	66.9	66.9	66.9
10-11 AM	3305	0.0	OFF	3305	0	0.00	0	66.6	66.6	66.6
11AM-NOON	3699	0.0	OFF	3699	0	0.00	0	65.6	65.6	65.6
NOON-1PM	3998	0.0	OFF	3998	0	0.00	0	63.5	63.5	63.5
1-2 PM	3927	0.0	OFF	3927	0	0.00	0	64.0	64.0	64.0
2-3 PM	4028	0.0	OFF	4028	0	0.00	0	63.3	63.3	63.3
3-4 PM	3996	0.0	OFF	3996	0	0.00	0	63.5	63.5	63.5
4-5 PM	4114	0.0	OFF	4114	0	0.00	0	62.7	62.7	62.7
5-6 PM	4362	0.0	OFF	4362	0	0.00	0	61.0	61.0	61.0
6-7 PM	4023	0.0	1499	1550	2473	16.32+	412	63.3	10.4	36.6
7-8 PM	3223	0.0	1499	1629	1594	14.34+	378	66.8	11.7	35.9
8-9 PM	2435	0.0	1499	1764	671	15.10+	376	67.7	11.2	31.5
9-10 PM	2605	0.0	1499	1500	1105	16.32+	399	67.5	10.6	30.8
10-11 PM	2168	0.0	1500	1500	668	16.34+	399	68.1	10.6	30.8
11PM-MID	1609	0.0	1499	1438	172	16.11+	393	68.7	10.7	30.8

"OFF" INDICATES NO ROAD WORK (ALL LANES OPEN TO TRAFFIC)

+ INDICATES QUEUEING EXCEEDS USER-SPECIFIED MAXIMUM LIMIT

----- SITE BREAKDOWN DELAYS -----	
BREAKDOWN DURATION (MINS)	0
RANGE OF QUEUE DELAY - MIN (VEH-H) MAX	0.0
AV BREAKDOWNS PER DAY	0.00
AV QUEUE DELAY/DAY (VEH-H)	0.0
AV TOTAL DELAY/DAY (VEH-H)	0.0

----- SITE ACCIDENT DELAYS -----	
BREAKDOWN DURATION (MINS)	0
RANGE OF QUEUE DELAY - MIN (VEH-H) MAX	0
AV BREAKDOWNS PER DAY	0
AV QUEUE DELAY/DAY (VEH-H)	0
AV TOTAL DELAY/DAY (VEH-H)	0

AVERAGE ACCIDENT NUMBERS (PIA/DAY)	
MAIN ROUTE WITHOUT WORKS	0.0322
MAIN ROUTE WITH WORKS	0.0276
'DIVERSION'	0.0084

PIA: Personal Injury Accidents

ECONOMIC IMPACT ON ROAD USERS	
ROAD USER COSTS PER DAY	\$68,245
CONGESTED HOURS PER DAY*	6

*Delays Exceeding User-Specified Maximum

**IH 94: USH 18 TO CTH O (WAUKESHA COUNTY)
 NIGHTTIME 2 LANE CLOSURE
 NO DIVERSION (MAX QUEUE METHOD)**

OCTOBER

Analyzed for 2009
 Construction Season

GRAPHICAL REPRESENTATION OF TRAFFIC MODEL INPUT AND OUTPUT

SATURDAY EASTBOUND DIRECTION

