

<b>IH 94: USH 18 TO CTH O (WAUKESHA COUNTY)                  NIGHTTIME 2 LANE CLOSURE                  NO DIVERSION (MAX QUEUE METHOD)</b>	<b>OCTOBER</b>
	Analyzed for 2009 Construction Season

**SUMMARY OF TRAFFIC MODEL OUTPUT**

MON-THUR WESTBOUND DIRECTION

TIME OF DAY	FLOWS AND CAPACITY IN VEH/HR							AVERAGE SPEEDS IN MPH			
	MAIN ROUTE		SITE CAPA CITY	FLOW		AV.DEL PER VEH (MINS)	AVERAGE QUEUE (VEH)	MAIN ROUTE		SITE	
	DEMAND FLOW	PCT HEAVY		MAIN ROUTE	'DIVER TED'			WITHOUT WORK ZONE	WITH WORK ZONE		
MID-1 AM	452	0.0	1500	452	0	0.53	0	70.2	59.4	43.7	
1-2 AM	269	0.0	1500	269	0	0.51	0	70.2	59.8	44.4	
2-3 AM	251	0.0	1500	251	0	0.50	0	70.2	59.8	44.5	
3-4 AM	318	0.0	1500	318	0	0.51	0	70.2	59.7	44.2	
4-5 AM	655	0.0	1500	655	0	0.55	0	69.9	58.8	42.9	
5-6 AM	1849	0.0	OFF	1849	0	0.00	0	68.4	68.4	68.4	
6-7 AM	3710	0.0	OFF	3710	0	0.00	0	65.5	65.5	65.5	
7-8 AM	4603	0.0	OFF	4603	0	0.00	0	59.4	59.4	59.4	
8-9 AM	4427	0.0	OFF	4427	0	0.00	0	60.6	60.6	60.6	
9-10 AM	3354	0.0	OFF	3354	0	0.00	0	66.6	66.6	66.6	
10-11 AM	3216	0.0	OFF	3216	0	0.00	0	66.8	66.8	66.8	
11AM-NOON	3541	0.0	OFF	3541	0	0.00	0	66.3	66.3	66.3	
NOON-1PM	3811	0.0	OFF	3811	0	0.00	0	64.8	64.8	64.8	
1-2 PM	3943	0.0	OFF	3943	0	0.00	0	63.9	63.9	63.9	
2-3 PM	4473	0.0	OFF	4473	0	0.00	0	60.3	60.3	60.3	
3-4 PM	5305	0.0	OFF	5305	0	0.00	0	54.6	54.6	54.6	
4-5 PM	5205	0.0	OFF	5205	0	0.00	0	55.3	55.3	55.3	
5-6 PM	5009	0.0	OFF	5009	0	0.00	0	56.6	56.6	56.6	
6-7 PM	4011	0.0	OFF	4011	0	0.00	0	63.5	63.5	63.5	
7-8 PM	2662	0.0	1499	1627	1035	14.42+	366	67.4	11.7	36.0	
8-9 PM	2076	0.0	1499	1797	279	13.70+	344	68.1	12.2	30.8	
9-10 PM	1863	0.0	1499	1500	363	16.36+	399	68.4	10.6	30.8	
10-11 PM	1351	0.0	1499	1310	40	14.05+	344	69.1	12.0	30.8	
11PM-MID	931	0.0	1499	931	0	1.91	60	69.6	42.1	39.9	

"OFF" INDICATES NO ROAD WORK (ALL LANES OPEN TO TRAFFIC)

+ INDICATES QUEUEING EXCEEDS USER-SPECIFIED MAXIMUM LIMIT

*----- SITE BREAKDOWN DELAYS -----*	
BREAKDOWN DURATION (MINS)	0
RANGE OF QUEUE DELAY - MIN (VEH-H) MAX	0.0
AV BREAKDOWNS PER DAY	0.00
AV QUEUE DELAY/DAY (VEH-H)	0.0
AV TOTAL DELAY/DAY (VEH-H)	0.0

*----- SITE ACCIDENT DELAYS -----*	
BREAKDOWN DURATION (MINS)	0
RANGE OF QUEUE DELAY - MIN (VEH-H) MAX	0
AV BREAKDOWNS PER DAY	0
AV QUEUE DELAY/DAY (VEH-H)	0
AV TOTAL DELAY/DAY (VEH-H)	0

AVERAGE ACCIDENT NUMBERS (PIA/DAY)	
MAIN ROUTE WITHOUT WORKS	0.0364
MAIN ROUTE WITH WORKS	0.0349
'DIVERSION'	0.0022
PIA: Personal Injury Accidents	
IMPACTS ON ROAD USERS	
ROAD USER COSTS PER DAY	\$27,299
CONGESTED HOURS PER DAY*	4

\*Delays Exceeding User-Specified Maximum

**IH 94: USH 18 TO CTH O (WAUKESHA COUNTY)  
NIGHTTIME 2 LANE CLOSURE  
NO DIVERSION (MAX QUEUE METHOD)**

**OCTOBER**

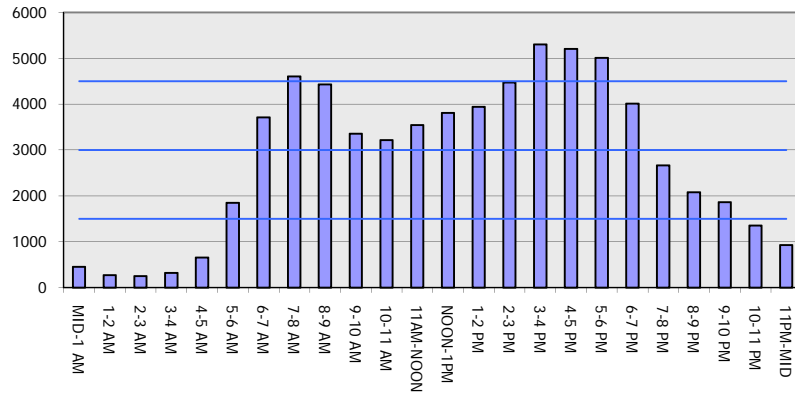
Analyzed for 2009  
Construction Season

**GRAPHICAL REPRESENTATION OF TRAFFIC MODEL INPUT AND OUTPUT**

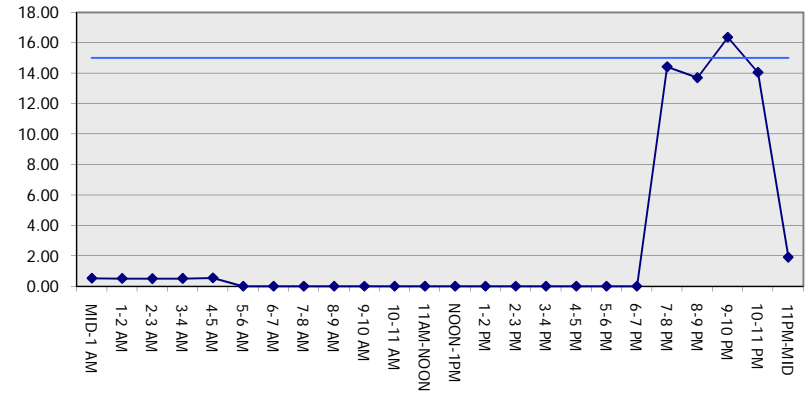
**MON-THUR**

**WESTBOUND DIRECTION**

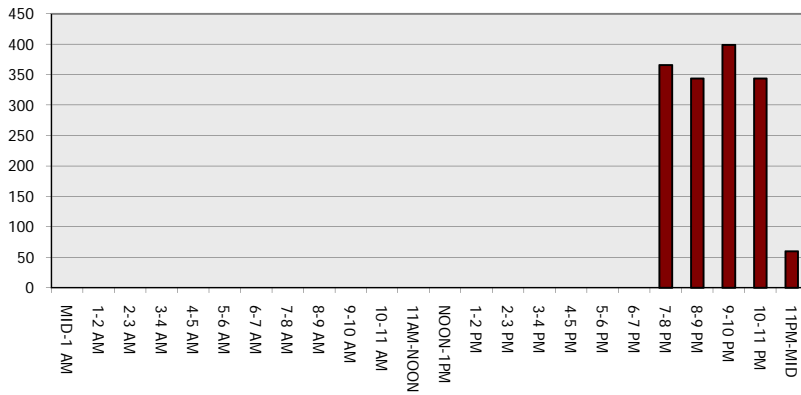
**Main Route - Traffic Demand (Vehicles Per Hour)**



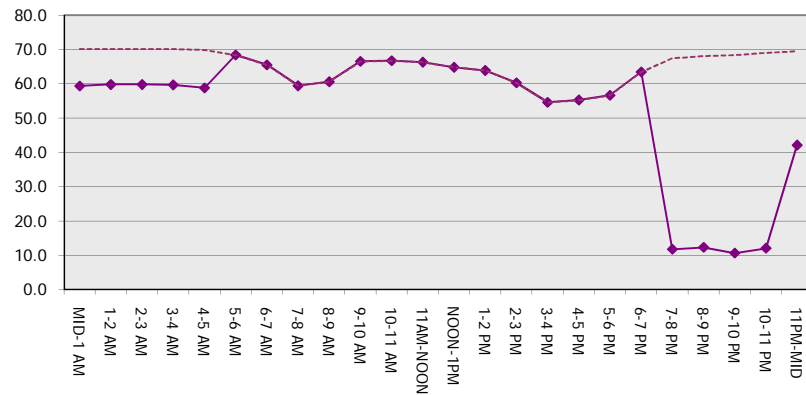
**Main Route Average Delay Per Vehicle (Minutes)**



**Main Route - Average Queue Length (Vehicles)**



**Main Route - Average Speed (MPH)**



<b>IH 94: USH 18 TO CTH O (WAUKESHA COUNTY)                  NIGHTTIME 2 LANE CLOSURE                  NO DIVERSION (MAX QUEUE METHOD)</b>	<b>OCTOBER</b>
	Analyzed for 2009 Construction Season

**SUMMARY OF TRAFFIC MODEL OUTPUT**

MON-THUR                      EASTBOUND DIRECTION

TIME OF DAY	FLOWS AND CAPACITY IN VEH/HR						AVERAGE SPEEDS IN MPH			
	MAIN ROUTE		SITE CAPA CITY	FLOW		AV.DEL PER VEH (MINS)	AVERAGE QUEUE (VEH)	MAIN ROUTE		SITE
	DEMAND FLOW	PCT HEAVY		MAIN ROUTE	'DIVER TED'			WITHOUT WORK ZONE	WITH WORK ZONE	
MID-1 AM	443	0.0	1500	443	0	0.53	0	70.2	59.4	43.7
1-2 AM	279	0.0	1500	279	0	0.51	0	70.2	59.7	44.3
2-3 AM	238	0.0	1500	238	0	0.50	0	70.2	59.9	44.5
3-4 AM	295	0.0	1500	295	0	0.51	0	70.2	59.7	44.3
4-5 AM	565	0.0	1500	565	0	0.54	0	70.0	59.1	43.3
5-6 AM	1898	0.0	OFF	1898	0	0.00	0	68.4	68.4	68.4
6-7 AM	4645	0.0	OFF	4645	0	0.00	0	59.1	59.1	59.1
7-8 AM	4942	0.0	OFF	4942	0	0.00	0	57.1	57.1	57.1
8-9 AM	4649	0.0	OFF	4649	0	0.00	0	59.1	59.1	59.1
9-10 AM	3932	0.0	OFF	3932	0	0.00	0	64.0	64.0	64.0
10-11 AM	3501	0.0	OFF	3501	0	0.00	0	66.4	66.4	66.4
11AM-NOON	3650	0.0	OFF	3650	0	0.00	0	66.0	66.0	66.0
NOON-1PM	3813	0.0	OFF	3813	0	0.00	0	64.8	64.8	64.8
1-2 PM	3882	0.0	OFF	3882	0	0.00	0	64.3	64.3	64.3
2-3 PM	4449	0.0	OFF	4449	0	0.00	0	60.5	60.5	60.5
3-4 PM	5083	0.0	OFF	5083	0	0.00	0	56.1	56.1	56.1
4-5 PM	5073	0.0	OFF	5073	0	0.00	0	56.2	56.2	56.2
5-6 PM	4809	0.0	OFF	4809	0	0.00	0	58.0	58.0	58.0
6-7 PM	3571	0.0	OFF	3571	0	0.00	0	66.3	66.3	66.3
7-8 PM	2568	0.0	1499	1767	801	13.51+	338	67.6	12.4	35.1
8-9 PM	2278	0.0	1499	1618	660	15.89+	389	67.9	10.8	30.8
9-10 PM	2112	0.0	1500	1500	612	16.34+	400	68.1	10.6	30.8
10-11 PM	1491	0.0	1500	1424	67	15.29+	373	68.9	11.2	30.8
11PM-MID	970	0.0	1499	970	0	2.97	113	69.6	34.5	38.1

"OFF" INDICATES NO ROAD WORK (ALL LANES OPEN TO TRAFFIC)

+ INDICATES QUEUEING EXCEEDS USER-SPECIFIED MAXIMUM LIMIT

*----- SITE BREAKDOWN DELAYS -----*	
BREAKDOWN DURATION (MINS)	0
RANGE OF QUEUE DELAY - MIN (VEH-H) MAX	0.0
AV BREAKDOWNS PER DAY	0.00
AV QUEUE DELAY/DAY (VEH-H)	0.0
AV TOTAL DELAY/DAY (VEH-H)	0.0

*----- SITE ACCIDENT DELAYS -----*	
BREAKDOWN DURATION (MINS)	0
RANGE OF QUEUE DELAY - MIN (VEH-H) MAX	0
AV BREAKDOWNS PER DAY	0
AV QUEUE DELAY/DAY (VEH-H)	0
AV TOTAL DELAY/DAY (VEH-H)	0

AVERAGE ACCIDENT NUMBERS (PIA/DAY)	
MAIN ROUTE WITHOUT WORKS	0.0374
MAIN ROUTE WITH WORKS	0.0356
'DIVERSION'	0.0027

PIA: Personal Injury Accidents

ECONOMIC IMPACT ON ROAD USERS	
ROAD USER COSTS PER DAY	\$30,266
CONGESTED HOURS PER DAY*	4

\*Delays Exceeding User-Specified Maximum

**IH 94: USH 18 TO CTH O (WAUKESHA COUNTY)  
 NIGHTTIME 2 LANE CLOSURE  
 NO DIVERSION (MAX QUEUE METHOD)**

**OCTOBER**

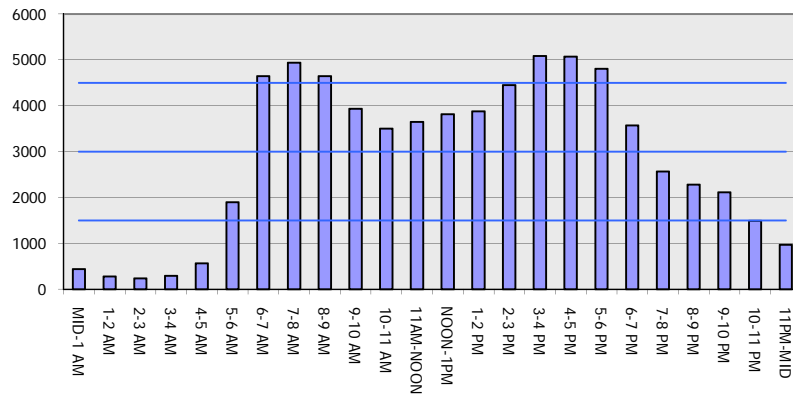
Analyzed for 2009  
 Construction Season

**GRAPHICAL REPRESENTATION OF TRAFFIC MODEL INPUT AND OUTPUT**

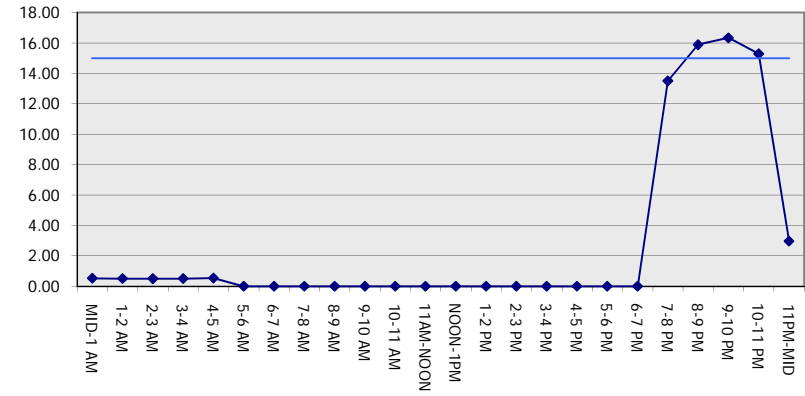
**MON-THUR**

**EASTBOUND DIRECTION**

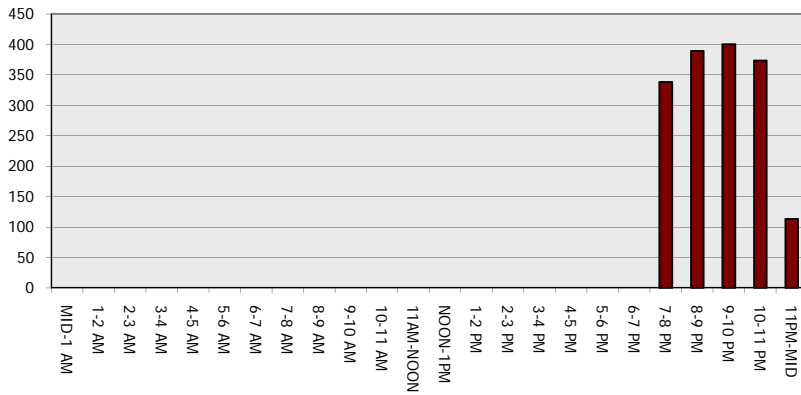
**Main Route - Traffic Demand (Vehicles Per Hour)**



**Main Route Average Delay Per Vehicle (Minutes)**



**Main Route - Average Queue Length (Vehicles)**



**Main Route - Average Speed (MPH)**

