

<b>IH 94: USH 18 TO CTH O (WAUKESHA COUNTY)                  NIGHTTIME CLOSURE                  NO DIVERSION (MAX QUEUE METHOD)</b>	<b>OCTOBER</b>
	Analyzed for 2009 Construction Season

**SUMMARY OF TRAFFIC MODEL OUTPUT**

MON-THUR      WESTBOUND DIRECTION

TIME OF DAY	FLOWS AND CAPACITY IN VEH/HR						AVERAGE SPEEDS IN MPH			
	MAIN ROUTE		SITE CAPA CITY	FLOW		AV.DEL PER VEH (MINS)	AVERAGE QUEUE (VEH)	MAIN ROUTE		SITE
	DEMAND FLOW	PCT HEAVY		MAIN ROUTE	'DIVER TED'			WITHOUT WORK ZONE	WITH WORK ZONE	
MID-1 AM	452	0.0	3000	452	0	0.36	0	70.2	62.5	49.7
1-2 AM	269	0.0	3000	269	0	0.36	0	70.2	62.5	49.7
2-3 AM	251	0.0	3000	251	0	0.36	0	70.2	62.5	49.7
3-4 AM	318	0.0	3000	318	0	0.36	0	70.2	62.5	49.7
4-5 AM	655	0.0	3000	655	0	0.36	0	69.9	62.3	49.7
5-6 AM	1849	0.0	OFF	1849	0	0.00	0	68.4	68.4	68.4
6-7 AM	3710	0.0	OFF	3710	0	0.00	0	65.5	65.5	65.5
7-8 AM	4603	0.0	OFF	4603	0	0.00	0	59.4	59.4	59.4
8-9 AM	4427	0.0	OFF	4427	0	0.00	0	60.6	60.6	60.6
9-10 AM	3354	0.0	OFF	3354	0	0.00	0	66.6	66.6	66.6
10-11 AM	3216	0.0	OFF	3216	0	0.00	0	66.8	66.8	66.8
11AM-NOON	3541	0.0	OFF	3541	0	0.00	0	66.3	66.3	66.3
NOON-1PM	3811	0.0	OFF	3811	0	0.00	0	64.8	64.8	64.8
1-2 PM	3943	0.0	OFF	3943	0	0.00	0	63.9	63.9	63.9
2-3 PM	4473	0.0	OFF	4473	0	0.00	0	60.3	60.3	60.3
3-4 PM	5305	0.0	OFF	5305	0	0.00	0	54.6	54.6	54.6
4-5 PM	5205	0.0	OFF	5205	0	0.00	0	55.3	55.3	55.3
5-6 PM	5009	0.0	OFF	5009	0	0.00	0	56.6	56.6	56.6
6-7 PM	4011	0.0	OFF	4011	0	0.00	0	63.5	63.5	63.5
7-8 PM	2662	0.0	3000	2662	0	0.51	0	67.4	57.8	43.2
8-9 PM	2076	0.0	3000	2076	0	0.33	0	68.1	61.3	49.7
9-10 PM	1863	0.0	3000	1863	0	0.34	0	68.4	61.5	49.7
10-11 PM	1351	0.0	3000	1351	0	0.35	0	69.1	61.9	49.7
11PM-MID	931	0.0	3000	931	0	0.35	0	69.6	62.1	49.7

**"OFF" INDICATES NO ROAD WORK (ALL LANES OPEN TO TRAFFIC)**

*----- SITE BREAKDOWN DELAYS -----*	
BREAKDOWN DURATION (MINS)	0
RANGE OF QUEUE DELAY - MIN (VEH-H) MAX	0.0
AV BREAKDOWNS PER DAY	0.00
AV QUEUE DELAY/DAY (VEH-H)	0.0
AV TOTAL DELAY/DAY (VEH-H)	0.0

*----- SITE ACCIDENT DELAYS -----*	
BREAKDOWN DURATION (MINS)	0
RANGE OF QUEUE DELAY - MIN (VEH-H) MAX	0
AV BREAKDOWNS PER DAY	0
AV QUEUE DELAY/DAY (VEH-H)	0
AV TOTAL DELAY/DAY (VEH-H)	0

AVERAGE ACCIDENT NUMBERS (PIA/DAY)	
MAIN ROUTE WITHOUT WORKS	0.0364
MAIN ROUTE WITH WORKS	0.0357
'DIVERSION'	0.0000
PIA: Personal Injury Accidents	
IMPACTS ON ROAD USERS	
ROAD USER COSTS PER DAY	\$841
CONGESTED HOURS PER DAY*	0

\*Delays Exceeding User-Specified Maximum

**IH 94: USH 18 TO CTH O (WAUKESHA COUNTY)**  
**NIGHTTIME CLOSURE**  
**NO DIVERSION (MAX QUEUE METHOD)**

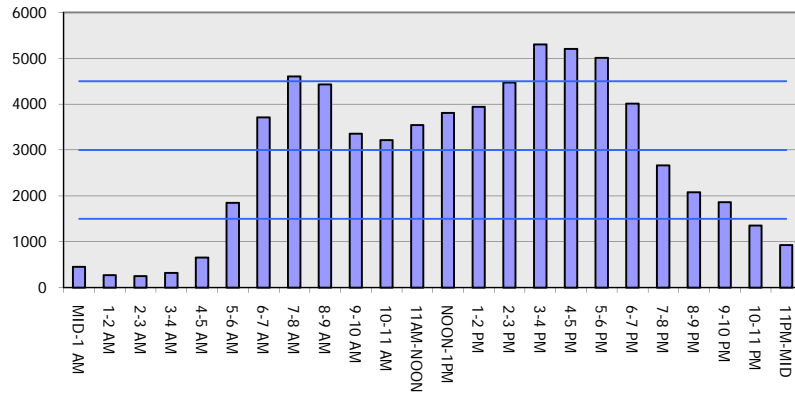
**OCTOBER**

Analyzed for 2009  
 Construction Season

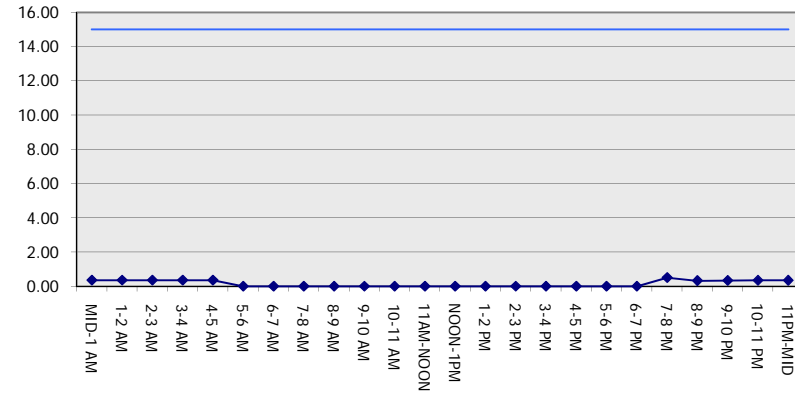
**GRAPHICAL REPRESENTATION OF TRAFFIC MODEL INPUT AND OUTPUT**

**MON-THUR WESTBOUND DIRECTION**

**Main Route - Traffic Demand (Vehicles Per Hour)**



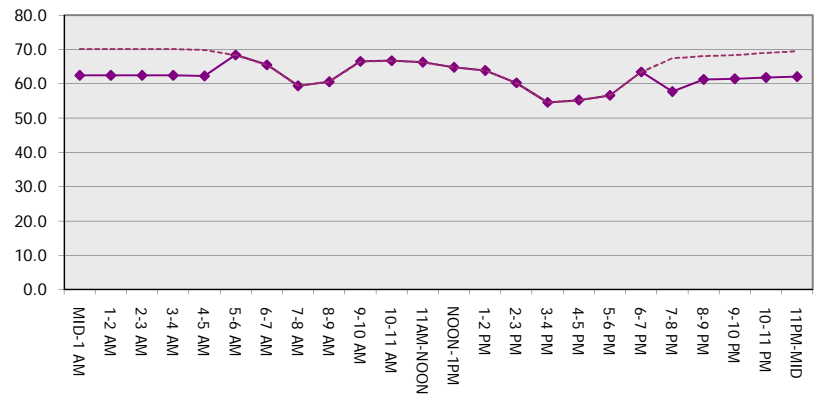
**Main Route Average Delay Per Vehicle (Minutes)**



**Main Route - Average Queue Length (Vehicles)**



**Main Route - Average Speed (MPH)**



<b>IH 94: USH 18 TO CTH O (WAUKESHA COUNTY)                  NIGHTTIME CLOSURE                  NO DIVERSION (MAX QUEUE METHOD)</b>	<b>OCTOBER</b>
	Analyzed for 2009 Construction Season

**SUMMARY OF TRAFFIC MODEL OUTPUT**

MON-THUR                      EASTBOUND DIRECTION

TIME OF DAY	FLOWS AND CAPACITY IN VEH/HR							AVERAGE SPEEDS IN MPH		
	MAIN ROUTE		SITE CAPA CITY	FLOW		AV.DEL PER VEH (MINS)	AVERAGE QUEUE (VEH)	MAIN ROUTE		SITE
	DEMAND FLOW	PCT HEAVY		MAIN ROUTE	'DIVER TED'			WITHOUT WORK ZONE	WITH WORK ZONE	
MID-1 AM	443	0.0	3000	443	0	0.36	0	70.2	62.5	49.7
1-2 AM	279	0.0	3000	279	0	0.36	0	70.2	62.5	49.7
2-3 AM	238	0.0	3000	238	0	0.36	0	70.2	62.5	49.7
3-4 AM	295	0.0	3000	295	0	0.36	0	70.2	62.5	49.7
4-5 AM	565	0.0	3000	565	0	0.36	0	70.0	62.3	49.7
5-6 AM	1898	0.0	OFF	1898	0	0.00	0	68.4	68.4	68.4
6-7 AM	4645	0.0	OFF	4645	0	0.00	0	59.1	59.1	59.1
7-8 AM	4942	0.0	OFF	4942	0	0.00	0	57.1	57.1	57.1
8-9 AM	4649	0.0	OFF	4649	0	0.00	0	59.1	59.1	59.1
9-10 AM	3932	0.0	OFF	3932	0	0.00	0	64.0	64.0	64.0
10-11 AM	3501	0.0	OFF	3501	0	0.00	0	66.4	66.4	66.4
11AM-NOON	3650	0.0	OFF	3650	0	0.00	0	66.0	66.0	66.0
NOON-1PM	3813	0.0	OFF	3813	0	0.00	0	64.8	64.8	64.8
1-2 PM	3882	0.0	OFF	3882	0	0.00	0	64.3	64.3	64.3
2-3 PM	4449	0.0	OFF	4449	0	0.00	0	60.5	60.5	60.5
3-4 PM	5083	0.0	OFF	5083	0	0.00	0	56.1	56.1	56.1
4-5 PM	5073	0.0	OFF	5073	0	0.00	0	56.2	56.2	56.2
5-6 PM	4809	0.0	OFF	4809	0	0.00	0	58.0	58.0	58.0
6-7 PM	3571	0.0	OFF	3571	0	0.00	0	66.3	66.3	66.3
7-8 PM	2568	0.0	3000	2568	0	0.45	0	67.6	58.9	45.2
8-9 PM	2278	0.0	3000	2278	0	0.33	0	67.9	61.2	49.7
9-10 PM	2112	0.0	3000	2112	0	0.33	0	68.1	61.3	49.7
10-11 PM	1491	0.0	3000	1491	0	0.34	0	68.9	61.7	49.7
11PM-MID	970	0.0	3000	970	0	0.35	0	69.6	62.1	49.7

"OFF" INDICATES NO ROAD WORK (ALL LANES OPEN TO TRAFFIC)

*----- SITE BREAKDOWN DELAYS -----*	
BREAKDOWN DURATION (MINS)	0
RANGE OF QUEUE DELAY - MIN (VEH-H) MAX	0.0
AV BREAKDOWNS PER DAY	0.00
AV QUEUE DELAY/DAY (VEH-H)	0.0
AV TOTAL DELAY/DAY (VEH-H)	0.0

*----- SITE ACCIDENT DELAYS -----*	
BREAKDOWN DURATION (MINS)	0
RANGE OF QUEUE DELAY - MIN (VEH-H) MAX	0
AV BREAKDOWNS PER DAY	0
AV QUEUE DELAY/DAY (VEH-H)	0
AV TOTAL DELAY/DAY (VEH-H)	0

AVERAGE ACCIDENT NUMBERS (PIA/DAY)	
MAIN ROUTE WITHOUT WORKS	0.0374
MAIN ROUTE WITH WORKS	0.0367
'DIVERSION'	0.0000

PIA: Personal Injury Accidents

ECONOMIC IMPACT ON ROAD USERS	
ROAD USER COSTS PER DAY	\$827
CONGESTED HOURS PER DAY*	0

\*Delays Exceeding User-Specified Maximum

**IH 94: USH 18 TO CTH O (WAUKESHA COUNTY)  
NIGHTTIME CLOSURE  
NO DIVERSION (MAX QUEUE METHOD)**

**OCTOBER**

Analyzed for 2009  
Construction Season

**GRAPHICAL REPRESENTATION OF TRAFFIC MODEL INPUT AND OUTPUT  
MON-THUR EASTBOUND DIRECTION**

