

IH 94: USH 18 TO CTH O (WAUKESHA COUNTY) NIGHTTIME 2 LANE CLOSURE NO DIVERSION (MAX QUEUE METHOD)	OCTOBER
	Analyzed for 2009 Construction Season

SUMMARY OF TRAFFIC MODEL OUTPUT

FRIDAY WESTBOUND DIRECTION

TIME OF DAY	FLOWS AND CAPACITY IN VEH/HR						AVERAGE SPEEDS IN MPH				
	MAIN ROUTE		SITE CAPA CITY	FLOW		AV.DEL PER VEH (MINS)	AVERAGE QUEUE (VEH)	MAIN ROUTE		SITE	
	DEMAND FLOW	PCT HEAVY		MAIN ROUTE	'DIVER TED'			WITHOUT WORK ZONE	WITH WORK ZONE		
MID-1 AM	325	0.0	1500	325	0	1.10	35	70.2	50.9	44.0	
1-2 AM	239	0.0	1500	239	0	0.50	0	70.2	59.9	44.5	
2-3 AM	277	0.0	1500	277	0	0.51	0	70.2	59.7	44.4	
3-4 AM	410	0.0	1500	410	0	0.52	0	70.2	59.5	43.8	
4-5 AM	761	0.0	1500	761	0	0.56	0	69.8	58.6	42.5	
5-6 AM	1991	0.0	OFF	1991	0	0.00	0	68.2	68.2	68.2	
6-7 AM	4201	0.0	OFF	4201	0	0.00	0	62.2	62.2	62.2	
7-8 AM	5309	0.0	OFF	5309	0	0.00	0	54.6	54.6	54.6	
8-9 AM	4681	0.0	OFF	4681	0	0.00	0	58.9	58.9	58.9	
9-10 AM	3795	0.0	OFF	3795	0	0.00	0	65.0	65.0	65.0	
10-11 AM	3944	0.0	OFF	3944	0	0.00	0	63.9	63.9	63.9	
11AM-NOON	4367	0.0	OFF	4367	0	0.00	0	61.0	61.0	61.0	
NOON-1PM	4629	0.0	OFF	4629	0	0.00	0	59.2	59.2	59.2	
1-2 PM	4888	0.0	OFF	4888	0	0.00	0	57.4	57.4	57.4	
2-3 PM	5378	0.0	OFF	5378	0	0.00	0	54.1	54.1	54.1	
3-4 PM	5678	0.0	OFF	5678	0	0.00	0	52.0	52.0	52.0	
4-5 PM	5153	0.0	OFF	5153	0	0.00	0	55.6	55.6	55.6	
5-6 PM	4917	0.0	OFF	4917	0	0.00	0	57.3	57.3	57.3	
6-7 PM	4858	0.0	OFF	4858	0	0.00	0	57.7	57.7	57.7	
7-8 PM	3260	0.0	1499	1550	1710	16.48+	412	66.7	10.4	36.6	
8-9 PM	2244	0.0	1499	1884	359	12.84+	328	67.9	12.9	30.9	
9-10 PM	2340	0.0	1499	1500	840	16.33+	399	67.8	10.6	30.8	
10-11 PM	1994	0.0	1500	1500	494	16.35+	400	68.2	10.6	30.8	
11PM-MID	1450	0.0	1499	1336	114	14.87+	363	68.9	11.4	30.8	

"OFF" INDICATES NO ROAD WORK (ALL LANES OPEN TO TRAFFIC)

+ INDICATES QUEUEING EXCEEDS USER-SPECIFIED MAXIMUM LIMIT

----- SITE BREAKDOWN DELAYS -----	
BREAKDOWN DURATION (MINS)	0
RANGE OF QUEUE DELAY - MIN	0.0
(VEH-H) MAX	0.0
AV BREAKDOWNS PER DAY	0.00
AV QUEUE DELAY/DAY (VEH-H)	0.0
AV TOTAL DELAY/DAY (VEH-H)	0.0

----- SITE ACCIDENT DELAYS -----	
BREAKDOWN DURATION (MINS)	0
RANGE OF QUEUE DELAY - MIN	0
(VEH-H) MAX	0
AV BREAKDOWNS PER DAY	0
AV QUEUE DELAY/DAY (VEH-H)	0
AV TOTAL DELAY/DAY (VEH-H)	0

AVERAGE ACCIDENT NUMBERS (PIA/DAY)	
MAIN ROUTE WITHOUT WORKS	0.0417
MAIN ROUTE WITH WORKS	0.0391
'DIVERSION'	0.0044
PIA: Personal Injury Accidents	
IMPACTS ON ROAD USERS	
ROAD USER COSTS PER DAY	\$41,279
CONGESTED HOURS PER DAY*	5

*Delays Exceeding User-Specified Maximum

**IH 94: USH 18 TO CTH O (WAUKESHA COUNTY)
NIGHTTIME 2 LANE CLOSURE
NO DIVERSION (MAX QUEUE METHOD)**

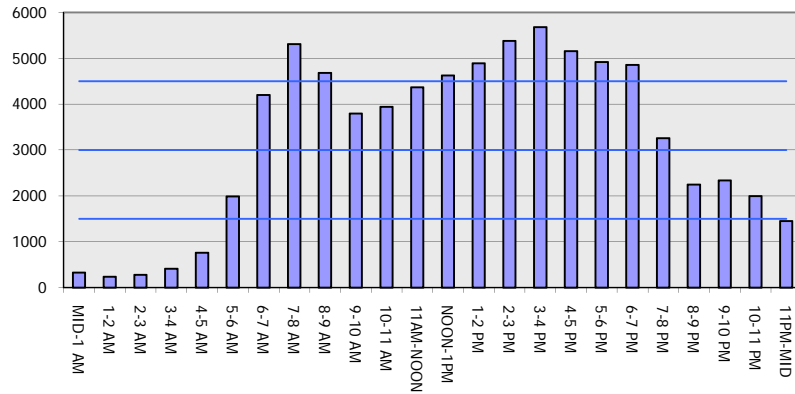
OCTOBER

Analyzed for 2009
Construction Season

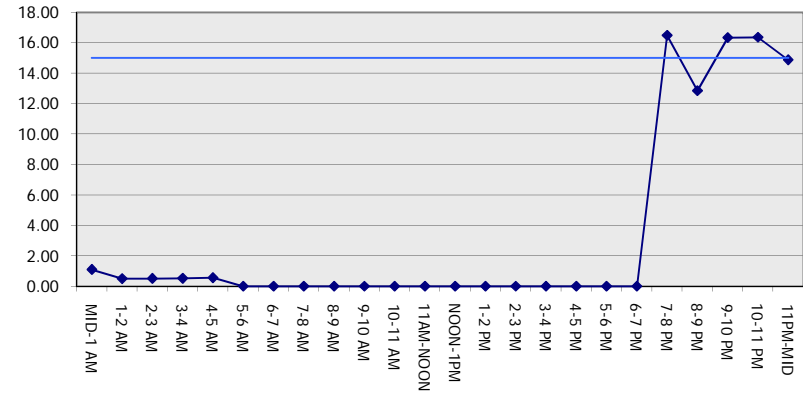
GRAPHICAL REPRESENTATION OF TRAFFIC MODEL INPUT AND OUTPUT

FRIDAY WESTBOUND DIRECTION

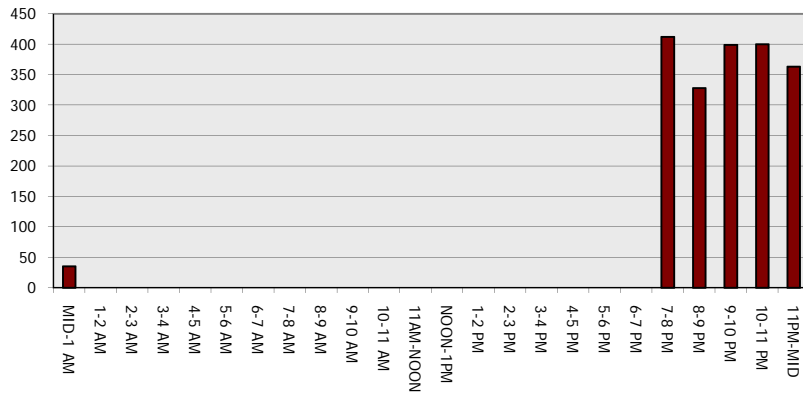
Main Route - Traffic Demand (Vehicles Per Hour)



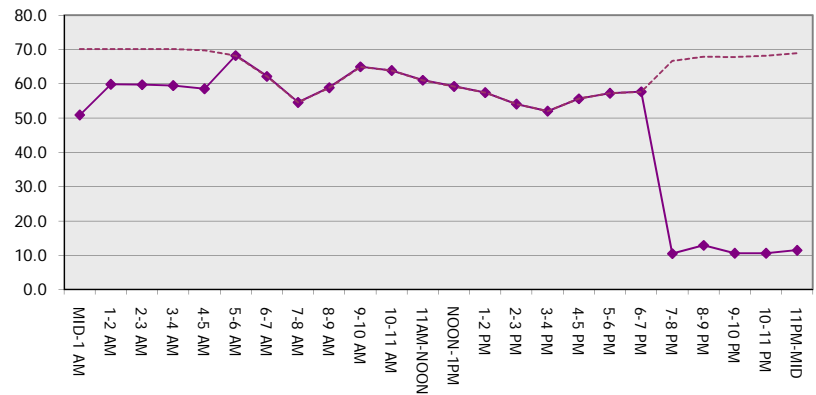
Main Route Average Delay Per Vehicle (Minutes)



Main Route - Average Queue Length (Vehicles)



Main Route - Average Speed (MPH)



IH 94: USH 18 TO CTH O (WAUKESHA COUNTY) NIGHTTIME 2 LANE CLOSURE NO DIVERSION (MAX QUEUE METHOD)	OCTOBER
	Analyzed for 2009 Construction Season

SUMMARY OF TRAFFIC MODEL OUTPUT

FRIDAY EASTBOUND DIRECTION

TIME OF DAY	FLOWS AND CAPACITY IN VEH/HR						AVERAGE SPEEDS IN MPH			
	MAIN ROUTE		SITE CAPA CITY	FLOW		AV.DEL PER VEH (MINS)	AVERAGE QUEUE (VEH)	MAIN ROUTE		SITE
	DEMAND FLOW	PCT HEAVY		MAIN ROUTE	'DIVER TED'			WITHOUT WORK ZONE	WITH WORK ZONE	
MID-1 AM	287	0.0	1500	287	0	1.36	56	70.2	47.8	44.0
1-2 AM	205	0.0	1500	205	0	0.50	0	70.2	59.9	44.6
2-3 AM	242	0.0	1500	242	0	0.50	0	70.2	59.8	44.5
3-4 AM	369	0.0	1500	369	0	0.52	0	70.2	59.6	44.0
4-5 AM	653	0.0	1500	653	0	0.55	0	69.9	58.8	42.9
5-6 AM	2043	0.0	OFF	2043	0	0.00	0	68.2	68.2	68.2
6-7 AM	4894	0.0	OFF	4894	0	0.00	0	57.4	57.4	57.4
7-8 AM	5602	0.0	OFF	5602	0	0.00	0	52.6	52.6	52.6
8-9 AM	4732	0.0	OFF	4732	0	0.00	0	58.5	58.5	58.5
9-10 AM	4051	0.0	OFF	4051	0	0.00	0	63.2	63.2	63.2
10-11 AM	3747	0.0	OFF	3747	0	0.00	0	65.3	65.3	65.3
11AM-NOON	4076	0.0	OFF	4076	0	0.00	0	63.0	63.0	63.0
NOON-1PM	4304	0.0	OFF	4304	0	0.00	0	61.5	61.5	61.5
1-2 PM	4448	0.0	OFF	4448	0	0.00	0	60.5	60.5	60.5
2-3 PM	5135	0.0	OFF	5135	0	0.00	0	55.8	55.8	55.8
3-4 PM	5455	0.0	OFF	5455	0	0.00	0	53.6	53.6	53.6
4-5 PM	5237	0.0	OFF	5237	0	0.00	0	55.1	55.1	55.1
5-6 PM	5000	0.0	OFF	5000	0	0.00	0	56.7	56.7	56.7
6-7 PM	4361	0.0	OFF	4361	0	0.00	0	61.0	61.0	61.0
7-8 PM	3424	0.0	1499	1550	1874	16.47+	412	66.5	10.4	36.6
8-9 PM	2610	0.0	1499	1660	949	13.78+	361	67.5	12.1	35.5
9-10 PM	2636	0.0	1499	1713	923	15.62+	385	67.4	10.9	30.8
10-11 PM	2231	0.0	1500	1500	731	16.34+	400	67.9	10.6	30.8
11PM-MID	1594	0.0	1500	1420	173	16.02+	391	68.7	10.7	30.8

"OFF" INDICATES NO ROAD WORK (ALL LANES OPEN TO TRAFFIC)

+ INDICATES QUEUEING EXCEEDS USER-SPECIFIED MAXIMUM LIMIT

----- SITE BREAKDOWN DELAYS -----	
BREAKDOWN DURATION (MINS)	0
RANGE OF QUEUE DELAY - MIN (VEH-H) MAX	0.0
AV BREAKDOWNS PER DAY	0.00
AV QUEUE DELAY/DAY (VEH-H)	0.0
AV TOTAL DELAY/DAY (VEH-H)	0.0

----- SITE ACCIDENT DELAYS -----	
BREAKDOWN DURATION (MINS)	0
RANGE OF QUEUE DELAY - MIN (VEH-H) MAX	0
AV BREAKDOWNS PER DAY	0
AV QUEUE DELAY/DAY (VEH-H)	0
AV TOTAL DELAY/DAY (VEH-H)	0

AVERAGE ACCIDENT NUMBERS (PIA/DAY)	
MAIN ROUTE WITHOUT WORKS	0.0418
MAIN ROUTE WITH WORKS	0.0387
'DIVERSION'	0.0058

PIA: Personal Injury Accidents

ECONOMIC IMPACT ON ROAD USERS	
ROAD USER COSTS PER DAY	\$46,087
CONGESTED HOURS PER DAY*	5

*Delays Exceeding User-Specified Maximum

**IH 94: USH 18 TO CTH O (WAUKESHA COUNTY)
NIGHTTIME 2 LANE CLOSURE
NO DIVERSION (MAX QUEUE METHOD)**

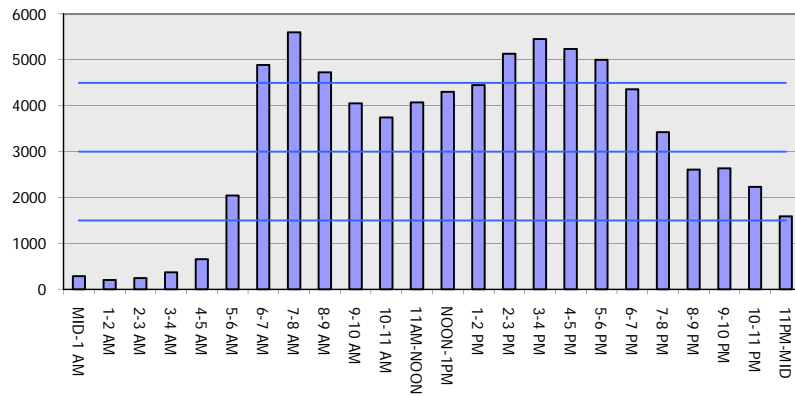
OCTOBER

Analyzed for 2009
Construction Season

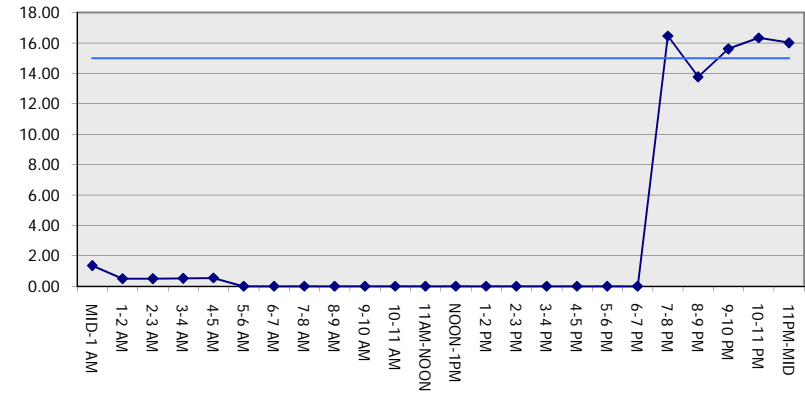
GRAPHICAL REPRESENTATION OF TRAFFIC MODEL INPUT AND OUTPUT

FRIDAY EASTBOUND DIRECTION

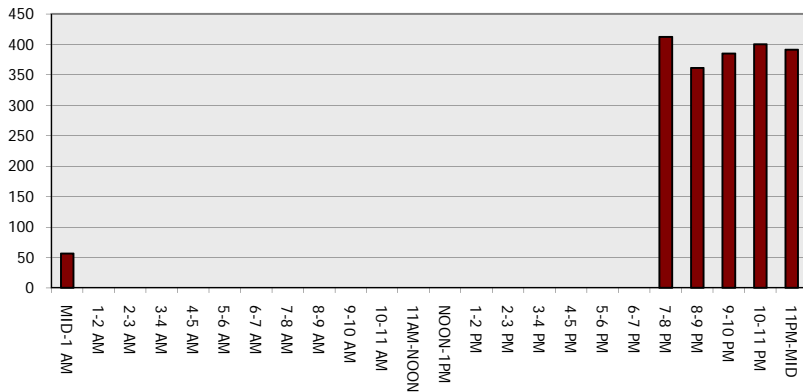
Main Route - Traffic Demand (Vehicles Per Hour)



Main Route Average Delay Per Vehicle (Minutes)



Main Route - Average Queue Length (Vehicles)



Main Route - Average Speed (MPH)

