

<b>IH 94: USH 18 TO CTH O (WAUKESHA COUNTY)                  NIGHTTIME 2 LANE CLOSURE                  NO DIVERSION (MAX QUEUE METHOD)</b>	<b>AUGUST</b>
	Analyzed for 2009 Construction Season

**SUMMARY OF TRAFFIC MODEL OUTPUT**

MON-THUR      WESTBOUND DIRECTION

TIME OF DAY	FLOWS AND CAPACITY IN VEH/HR						AVERAGE SPEEDS IN MPH				
	MAIN ROUTE		SITE CAPA CITY	FLOW		AV.DEL PER VEH (MINS)	AVERAGE QUEUE (VEH)	MAIN ROUTE		SITE	
	DEMAND FLOW	PCT HEAVY		MAIN ROUTE	'DIVER TED'			WITHOUT WORK ZONE	WITH WORK ZONE		
MID-1 AM	560	0.0	1500	560	0	0.77	10	70.0	55.3	43.2	
1-2 AM	331	0.0	1500	331	0	0.51	0	70.2	59.6	44.2	
2-3 AM	287	0.0	1500	287	0	0.51	0	70.2	59.7	44.3	
3-4 AM	370	0.0	1500	370	0	0.52	0	70.2	59.6	44.0	
4-5 AM	761	0.0	1500	761	0	0.56	0	69.8	58.6	42.5	
5-6 AM	1970	0.0	OFF	1970	0	0.00	0	68.3	68.3	68.3	
6-7 AM	3792	0.0	OFF	3792	0	0.00	0	65.0	65.0	65.0	
7-8 AM	4616	0.0	OFF	4616	0	0.00	0	59.3	59.3	59.3	
8-9 AM	4442	0.0	OFF	4442	0	0.00	0	60.5	60.5	60.5	
9-10 AM	3425	0.0	OFF	3425	0	0.00	0	66.5	66.5	66.5	
10-11 AM	3188	0.0	OFF	3188	0	0.00	0	66.8	66.8	66.8	
11AM-NOON	3601	0.0	OFF	3601	0	0.00	0	66.3	66.3	66.3	
NOON-1PM	3757	0.0	OFF	3757	0	0.00	0	65.2	65.2	65.2	
1-2 PM	3903	0.0	OFF	3903	0	0.00	0	64.2	64.2	64.2	
2-3 PM	4186	0.0	OFF	4186	0	0.00	0	62.3	62.3	62.3	
3-4 PM	4504	0.0	OFF	4504	0	0.00	0	60.1	60.1	60.1	
4-5 PM	4683	0.0	OFF	4683	0	0.00	0	58.9	58.9	58.9	
5-6 PM	4609	0.0	OFF	4609	0	0.00	0	59.4	59.4	59.4	
6-7 PM	4287	0.0	OFF	4287	0	0.00	0	61.5	61.5	61.5	
7-8 PM	3079	0.0	1499	1550	1529	16.49+	412	66.9	10.4	36.6	
8-9 PM	2522	0.0	1499	1715	807	13.51+	350	67.6	12.4	35.1	
9-10 PM	2191	0.0	1499	1635	556	15.83+	388	68.0	10.8	30.8	
10-11 PM	1920	0.0	1500	1500	420	16.35+	400	68.4	10.6	30.8	
11PM-MID	1233	0.0	1499	1233	0	12.13+	308	69.2	13.5	32.4	

"OFF" INDICATES NO ROAD WORK (ALL LANES OPEN TO TRAFFIC)

+ INDICATES QUEUEING EXCEEDS USER-SPECIFIED MAXIMUM LIMIT

*----- SITE BREAKDOWN DELAYS -----*	
BREAKDOWN DURATION (MINS)	0
RANGE OF QUEUE DELAY - MIN (VEH-H) MAX	0.0
AV BREAKDOWNS PER DAY	0.00
AV QUEUE DELAY/DAY (VEH-H)	0.0
AV TOTAL DELAY/DAY (VEH-H)	0.0

*----- SITE ACCIDENT DELAYS -----*	
BREAKDOWN DURATION (MINS)	0
RANGE OF QUEUE DELAY - MIN (VEH-H) MAX	0
AV BREAKDOWNS PER DAY	0
AV QUEUE DELAY/DAY (VEH-H)	0
AV TOTAL DELAY/DAY (VEH-H)	0

AVERAGE ACCIDENT NUMBERS (PIA/DAY)	
MAIN ROUTE WITHOUT WORKS	0.0369
MAIN ROUTE WITH WORKS	0.0345
'DIVERSION'	0.0041
PIA: Personal Injury Accidents	
IMPACTS ON ROAD USERS	
ROAD USER COSTS PER DAY	\$38,167
CONGESTED HOURS PER DAY*	5

\*Delays Exceeding User-Specified Maximum

**IH 94: USH 18 TO CTH O (WAUKESHA COUNTY)  
NIGHTTIME 2 LANE CLOSURE  
NO DIVERSION (MAX QUEUE METHOD)**

**AUGUST**

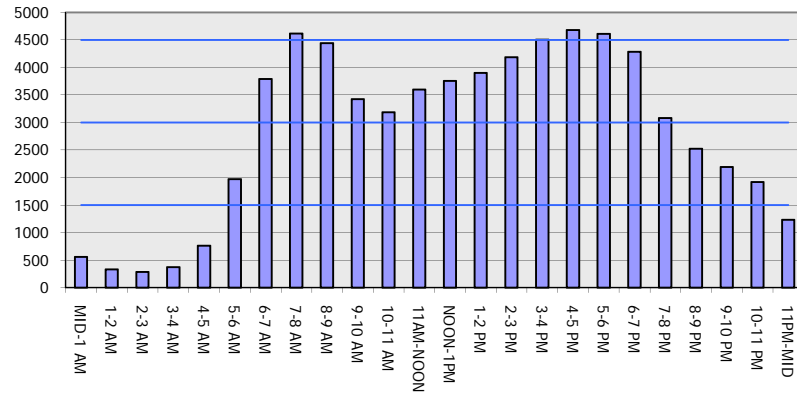
Analyzed for 2009  
Construction Season

**GRAPHICAL REPRESENTATION OF TRAFFIC MODEL INPUT AND OUTPUT**

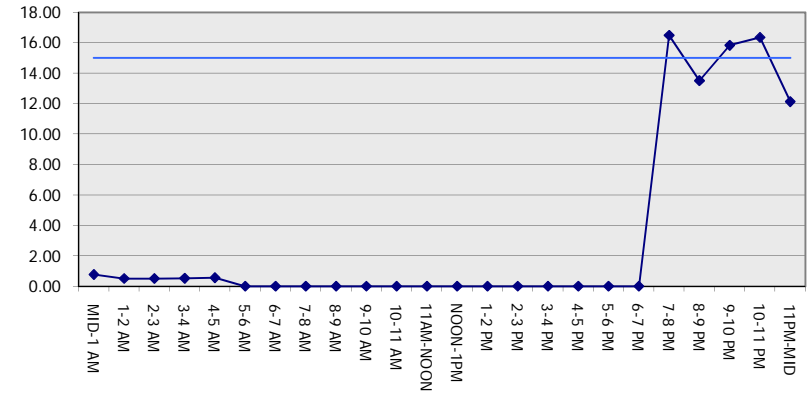
**MON-THUR**

**WESTBOUND DIRECTION**

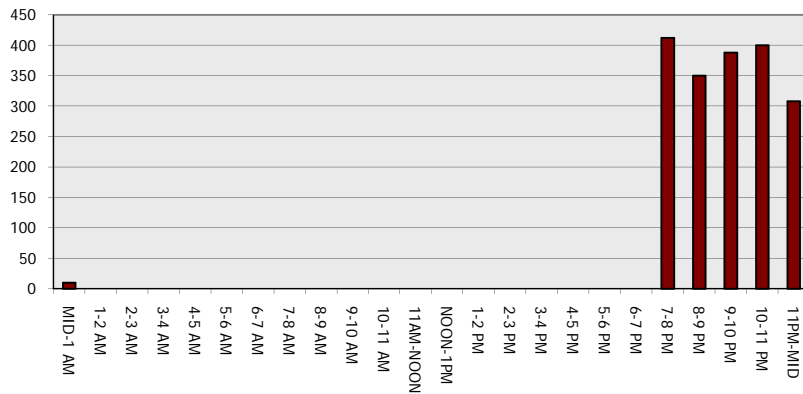
**Main Route - Traffic Demand (Vehicles Per Hour)**



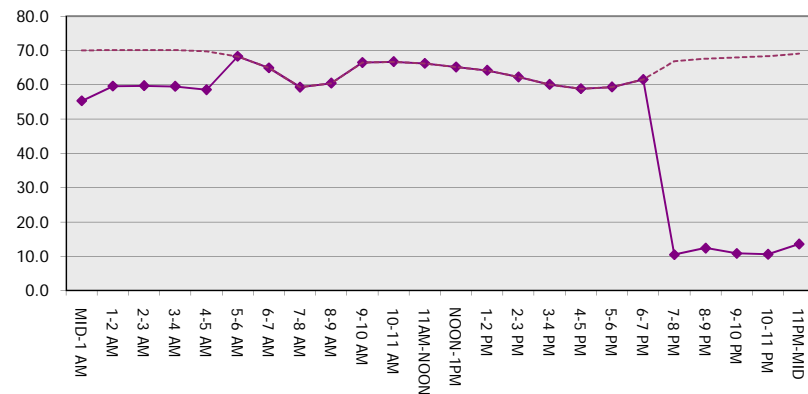
**Main Route Average Delay Per Vehicle (Minutes)**



**Main Route - Average Queue Length (Vehicles)**



**Main Route - Average Speed (MPH)**



<b>IH 94: USH 18 TO CTH O (WAUKESHA COUNTY)</b> <b>NIGHTTIME 2 LANE CLOSURE</b> <b>NO DIVERSION (MAX QUEUE METHOD)</b>	<b>AUGUST</b>
	Analyzed for 2009 Construction Season

**SUMMARY OF TRAFFIC MODEL OUTPUT**

MON-THUR                      EASTBOUND DIRECTION

TIME OF DAY	FLOWS AND CAPACITY IN VEH/HR						AVERAGE SPEEDS IN MPH			
	MAIN ROUTE		SITE CAPA CITY	FLOW		AV.DEL PER VEH (MINS)	AVERAGE QUEUE (VEH)	MAIN ROUTE		SITE
	DEMAND FLOW	PCT HEAVY		MAIN ROUTE	'DIVER TED'			WITHOUT WORK ZONE	WITH WORK ZONE	
MID-1 AM	508	0.0	1500	508	0	0.53	0	70.1	59.2	43.5
1-2 AM	319	0.0	1500	319	0	0.51	0	70.2	59.7	44.2
2-3 AM	274	0.0	1500	274	0	0.51	0	70.2	59.7	44.4
3-4 AM	329	0.0	1500	329	0	0.51	0	70.2	59.6	44.2
4-5 AM	646	0.0	1500	646	0	0.55	0	69.9	58.9	43.0
5-6 AM	1966	0.0	OFF	1966	0	0.00	0	68.3	68.3	68.3
6-7 AM	4424	0.0	OFF	4424	0	0.00	0	60.6	60.6	60.6
7-8 AM	4966	0.0	OFF	4966	0	0.00	0	56.9	56.9	56.9
8-9 AM	4814	0.0	OFF	4814	0	0.00	0	57.9	57.9	57.9
9-10 AM	3922	0.0	OFF	3922	0	0.00	0	64.1	64.1	64.1
10-11 AM	3551	0.0	OFF	3551	0	0.00	0	66.3	66.3	66.3
11AM-NOON	3896	0.0	OFF	3896	0	0.00	0	64.2	64.2	64.2
NOON-1PM	3940	0.0	OFF	3940	0	0.00	0	64.0	64.0	64.0
1-2 PM	4033	0.0	OFF	4033	0	0.00	0	63.3	63.3	63.3
2-3 PM	4352	0.0	OFF	4352	0	0.00	0	61.1	61.1	61.1
3-4 PM	4553	0.0	OFF	4553	0	0.00	0	59.7	59.7	59.7
4-5 PM	4707	0.0	OFF	4707	0	0.00	0	58.7	58.7	58.7
5-6 PM	4429	0.0	OFF	4429	0	0.00	0	60.6	60.6	60.6
6-7 PM	3695	0.0	OFF	3695	0	0.00	0	65.6	65.6	65.6
7-8 PM	2783	0.0	1499	1620	1164	14.57+	369	67.3	11.6	36.1
8-9 PM	2596	0.0	1499	1704	892	14.30+	367	67.5	11.8	34.7
9-10 PM	2242	0.0	1499	1518	724	16.24+	398	67.9	10.6	31.1
10-11 PM	1582	0.0	1500	1532	50	15.90+	387	68.7	10.8	30.8
11PM-MID	1086	0.0	1499	1086	0	6.21	202	69.4	22.3	35.7

"OFF" INDICATES NO ROAD WORK (ALL LANES OPEN TO TRAFFIC)

+ INDICATES QUEUEING EXCEEDS USER-SPECIFIED MAXIMUM LIMIT

*----- SITE BREAKDOWN DELAYS -----*	
BREAKDOWN DURATION (MINS)	0
RANGE OF QUEUE DELAY - MIN (VEH-H) MAX	0.0
AV BREAKDOWNS PER DAY	0.00
AV QUEUE DELAY/DAY (VEH-H)	0.0
AV TOTAL DELAY/DAY (VEH-H)	0.0

*----- SITE ACCIDENT DELAYS -----*	
BREAKDOWN DURATION (MINS)	0
RANGE OF QUEUE DELAY - MIN (VEH-H) MAX	0
AV BREAKDOWNS PER DAY	0
AV QUEUE DELAY/DAY (VEH-H)	0
AV TOTAL DELAY/DAY (VEH-H)	0

AVERAGE ACCIDENT NUMBERS (PIA/DAY)	
MAIN ROUTE WITHOUT WORKS	0.0377
MAIN ROUTE WITH WORKS	0.0355
'DIVERSION'	0.0035

PIA: Personal Injury Accidents

ECONOMIC IMPACT ON ROAD USERS	
ROAD USER COSTS PER DAY	\$33,564
CONGESTED HOURS PER DAY*	4

\*Delays Exceeding User-Specified Maximum

**IH 94: USH 18 TO CTH O (WAUKESHA COUNTY)  
NIGHTTIME 2 LANE CLOSURE  
NO DIVERSION (MAX QUEUE METHOD)**

**AUGUST**  
Analyzed for 2009  
Construction Season

**GRAPHICAL REPRESENTATION OF TRAFFIC MODEL INPUT AND OUTPUT**  
**MON-THUR EASTBOUND DIRECTION**

