

<b>IH 94: USH 18 TO CTH O (WAUKESHA COUNTY)                  NIGHTTIME 2 LANE CLOSURE                  NO DIVERSION (MAX QUEUE METHOD)</b>	<b>AUGUST</b>
	Analyzed for 2009 Construction Season

**SUMMARY OF TRAFFIC MODEL OUTPUT**

FRIDAY WESTBOUND DIRECTION

TIME OF DAY	FLOWS AND CAPACITY IN VEH/HR						AVERAGE SPEEDS IN MPH			
	MAIN ROUTE		SITE CAPA CITY	FLOW		AV.DEL PER VEH (MINS)	AVERAGE QUEUE (VEH)	MAIN ROUTE		SITE
	DEMAND FLOW	PCT HEAVY		MAIN ROUTE	'DIVER TED'			WITHOUT WORK ZONE	WITH WORK ZONE	
MID-1 AM	139	0.0	*****	139	0	1.16	45	70.2	50.1	44.6
1-2 AM	24	0.0	1500	24	0	0.48	0	70.2	60.3	45.4
2-3 AM	151	0.0	1500	151	0	0.49	0	70.2	60.1	44.9
3-4 AM	23	0.0	1500	23	0	0.47	0	70.2	60.3	45.4
4-5 AM	70	0.0	1500	70	0	0.48	0	70.2	60.2	45.2
5-6 AM	138	0.0	OFF	138	0	0.00	0	70.2	70.2	70.2
6-7 AM	199	0.0	OFF	199	0	0.00	0	70.2	70.2	70.2
7-8 AM	141	0.0	OFF	141	0	0.00	0	70.2	70.2	70.2
8-9 AM	3023	0.0	OFF	3023	0	0.00	0	67.0	67.0	67.0
9-10 AM	2201	0.0	OFF	2201	0	0.00	0	68.0	68.0	68.0
10-11 AM	1418	0.0	OFF	1418	0	0.00	0	69.0	69.0	69.0
11AM-NOON	2046	0.0	OFF	2046	0	0.00	0	68.2	68.2	68.2
NOON-1PM	141	0.0	OFF	141	0	0.00	0	70.2	70.2	70.2
1-2 PM	2630	0.0	OFF	2630	0	0.00	0	67.4	67.4	67.4
2-3 PM	4624	0.0	OFF	4624	0	0.00	0	59.2	59.2	59.2
3-4 PM	5015	0.0	OFF	5015	0	0.00	0	56.6	56.6	56.6
4-5 PM	4861	0.0	OFF	4861	0	0.00	0	57.6	57.6	57.6
5-6 PM	5089	0.0	OFF	5089	0	0.00	0	56.1	56.1	56.1
6-7 PM	3850	0.0	OFF	3850	0	0.00	0	64.6	64.6	64.6
7-8 PM	3066	0.0	1499	1550	1516	16.49+	412	66.9	10.4	36.6
8-9 PM	2801	0.0	1499	1583	1218	14.34+	380	67.3	11.7	36.0
9-10 PM	2426	0.0	1499	1687	739	14.29+	365	67.7	11.8	34.3
10-11 PM	2147	0.0	1499	1538	609	16.16+	395	68.1	10.6	31.2
11PM-MID	1701	0.0	1499	1475	226	15.28+	373	68.6	11.2	30.8

"OFF" INDICATES NO ROAD WORK (ALL LANES OPEN TO TRAFFIC)

+ INDICATES QUEUEING EXCEEDS USER-SPECIFIED MAXIMUM LIMIT

*----- SITE BREAKDOWN DELAYS -----*	
BREAKDOWN DURATION (MINS)	0
RANGE OF QUEUE DELAY - MIN (VEH-H) MAX	0.0
AV BREAKDOWNS PER DAY	0.00
AV QUEUE DELAY/DAY (VEH-H)	0.0
AV TOTAL DELAY/DAY (VEH-H)	0.0

*----- SITE ACCIDENT DELAYS -----*	
BREAKDOWN DURATION (MINS)	0
RANGE OF QUEUE DELAY - MIN (VEH-H) MAX	0
AV BREAKDOWNS PER DAY	0
AV QUEUE DELAY/DAY (VEH-H)	0
AV TOTAL DELAY/DAY (VEH-H)	0

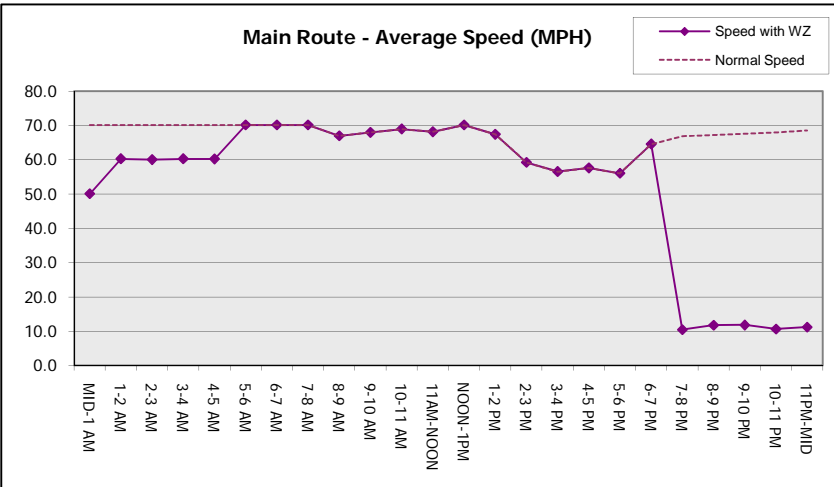
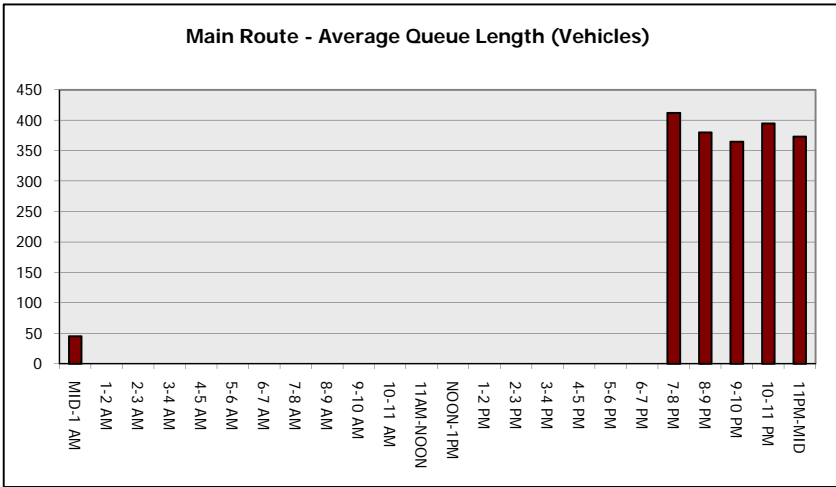
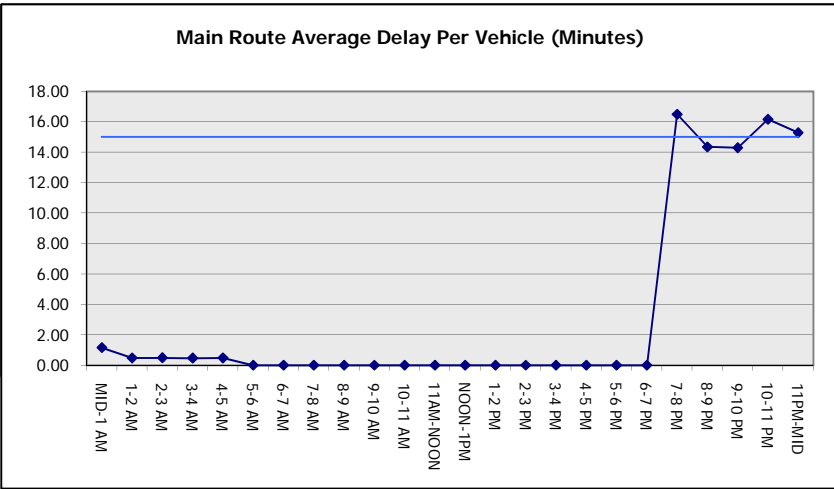
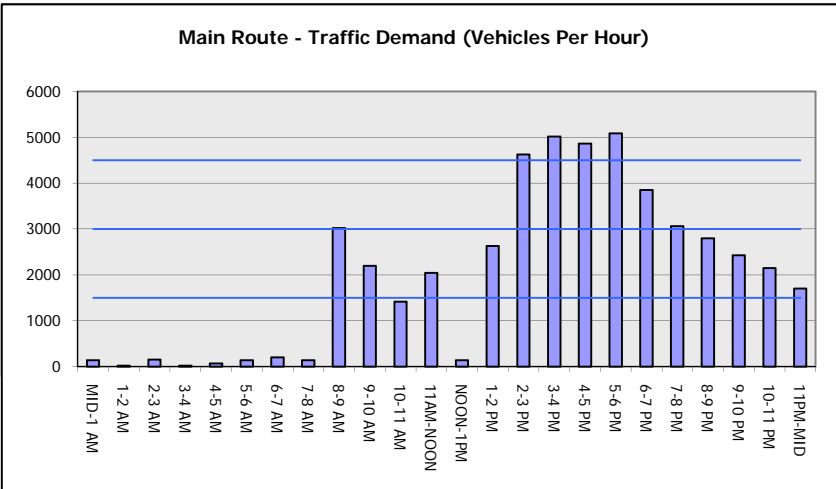
AVERAGE ACCIDENT NUMBERS (PIA/DAY)	
MAIN ROUTE WITHOUT WORKS	0.0259
MAIN ROUTE WITH WORKS	0.0230
'DIVERSION'	0.0054
PIA: Personal Injury Accidents	
IMPACTS ON ROAD USERS	
ROAD USER COSTS PER DAY	#VALUE!
CONGESTED HOURS PER DAY*	5

\*Delays Exceeding User-Specified Maximum

**IH 94: USH 18 TO CTH O (WAUKESHA COUNTY)  
 NIGHTTIME 2 LANE CLOSURE  
 NO DIVERSION (MAX QUEUE METHOD)**

**AUGUST**  
 Analyzed for 2009  
 Construction Season

**GRAPHICAL REPRESENTATION OF TRAFFIC MODEL INPUT AND OUTPUT**  
**FRIDAY WESTBOUND DIRECTION**



<b>IH 94: USH 18 TO CTH O (WAUKESHA COUNTY)                  NIGHTTIME 2 LANE CLOSURE                  NO DIVERSION (MAX QUEUE METHOD)</b>	<b>AUGUST</b>
	Analyzed for 2009 Construction Season

**SUMMARY OF TRAFFIC MODEL OUTPUT**

FRIDAY EASTBOUND DIRECTION

TIME OF DAY	FLOWS AND CAPACITY IN VEH/HR						AVERAGE SPEEDS IN MPH			
	MAIN ROUTE		SITE CAPA CITY	FLOW		AV.DEL PER VEH (MINS)	AVERAGE QUEUE (VEH)	MAIN ROUTE		SITE
	DEMAND FLOW	PCT HEAVY		MAIN ROUTE	'DIVER TED'			WITHOUT WORK ZONE	WITH WORK ZONE	
MID-1 AM	83	0.0	750	83	0	0.91	26	70.2	53.4	45.0
1-2 AM	24	0.0	1500	24	0	0.48	0	70.2	60.3	45.4
2-3 AM	95	0.0	1500	95	0	0.48	0	70.2	60.2	45.1
3-4 AM	14	0.0	1500	14	0	0.47	0	70.2	60.4	45.5
4-5 AM	70	0.0	1500	70	0	0.48	0	70.2	60.2	45.2
5-6 AM	91	0.0	OFF	91	0	0.00	0	70.2	70.2	70.2
6-7 AM	229	0.0	OFF	229	0	0.00	0	70.2	70.2	70.2
7-8 AM	122	0.0	OFF	122	0	0.00	0	70.2	70.2	70.2
8-9 AM	2960	0.0	OFF	2960	0	0.00	0	67.1	67.1	67.1
9-10 AM	2185	0.0	OFF	2185	0	0.00	0	68.0	68.0	68.0
10-11 AM	1369	0.0	OFF	1369	0	0.00	0	69.1	69.1	69.1
11AM-NOON	2009	0.0	OFF	2009	0	0.00	0	68.2	68.2	68.2
NOON-1PM	109	0.0	OFF	109	0	0.00	0	70.2	70.2	70.2
1-2 PM	2181	0.0	OFF	2181	0	0.00	0	68.0	68.0	68.0
2-3 PM	4737	0.0	OFF	4737	0	0.00	0	58.5	58.5	58.5
3-4 PM	5125	0.0	OFF	5125	0	0.00	0	55.8	55.8	55.8
4-5 PM	4914	0.0	OFF	4914	0	0.00	0	57.3	57.3	57.3
5-6 PM	4785	0.0	OFF	4785	0	0.00	0	58.2	58.2	58.2
6-7 PM	3850	0.0	OFF	3850	0	0.00	0	64.6	64.6	64.6
7-8 PM	3177	0.0	1499	1550	1627	16.48+	412	66.8	10.4	36.6
8-9 PM	2720	0.0	1499	1583	1136	14.29+	379	67.4	11.8	36.0
9-10 PM	2494	0.0	1499	1704	789	14.38+	366	67.6	11.7	34.0
10-11 PM	2003	0.0	1499	1539	464	16.18+	395	68.2	10.6	30.8
11PM-MID	1514	0.0	1499	1387	127	14.68+	360	68.9	11.6	30.8

"OFF" INDICATES NO ROAD WORK (ALL LANES OPEN TO TRAFFIC)

+ INDICATES QUEUEING EXCEEDS USER-SPECIFIED MAXIMUM LIMIT

*----- SITE BREAKDOWN DELAYS -----*	
BREAKDOWN DURATION (MINS)	0
RANGE OF QUEUE DELAY - MIN (VEH-H) MAX	0.0
AV BREAKDOWNS PER DAY	0.00
AV QUEUE DELAY/DAY (VEH-H)	0.0
AV TOTAL DELAY/DAY (VEH-H)	0.0

*----- SITE ACCIDENT DELAYS -----*	
BREAKDOWN DURATION (MINS)	0
RANGE OF QUEUE DELAY - MIN (VEH-H) MAX	0
AV BREAKDOWNS PER DAY	0
AV QUEUE DELAY/DAY (VEH-H)	0
AV TOTAL DELAY/DAY (VEH-H)	0

AVERAGE ACCIDENT NUMBERS (PIA/DAY)	
MAIN ROUTE WITHOUT WORKS	0.0253
MAIN ROUTE WITH WORKS	0.0226
'DIVERSION'	0.0052

PIA: Personal Injury Accidents

ECONOMIC IMPACT ON ROAD USERS	
ROAD USER COSTS PER DAY	#VALUE!
CONGESTED HOURS PER DAY*	5

\*Delays Exceeding User-Specified Maximum

**IH 94: USH 18 TO CTH O (WAUKESHA COUNTY)  
NIGHTTIME 2 LANE CLOSURE  
NO DIVERSION (MAX QUEUE METHOD)**

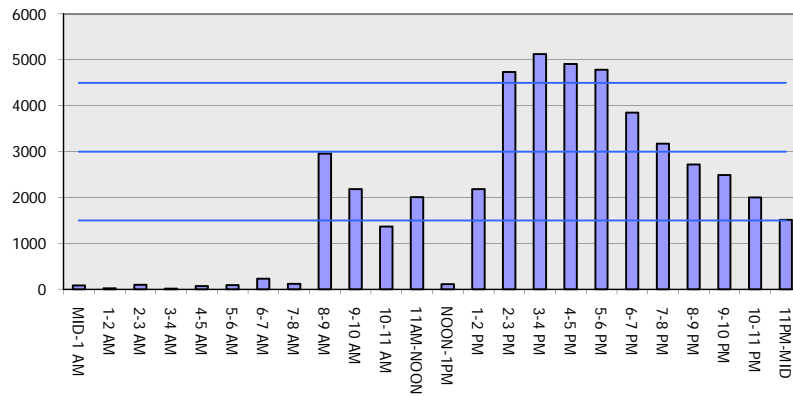
**AUGUST**

Analyzed for 2009  
Construction Season

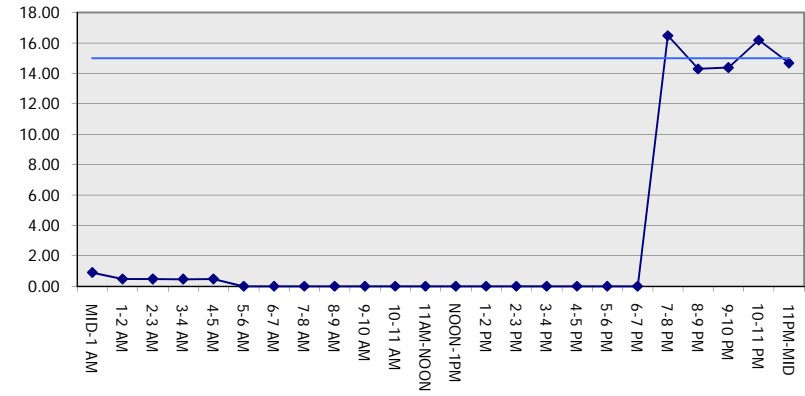
**GRAPHICAL REPRESENTATION OF TRAFFIC MODEL INPUT AND OUTPUT**

**FRIDAY EASTBOUND DIRECTION**

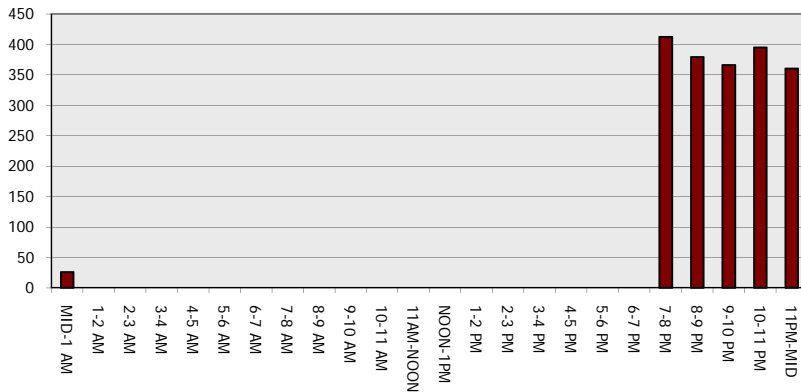
**Main Route - Traffic Demand (Vehicles Per Hour)**



**Main Route Average Delay Per Vehicle (Minutes)**



**Main Route - Average Queue Length (Vehicles)**



**Main Route - Average Speed (MPH)**

