

<b>IH 94: CTH G TO STH 16 (WAUKESHA COUNTY)                  NIGHTTIME 2 LANE CLOSURE                  NO DIVERSION ROUTE (MAX QUEUE METHOD)</b>	<b>OCTOBER</b>
	Analyzed for 2009 Construction Season

**SUMMARY OF TRAFFIC MODEL OUTPUT**

SUNDAY WESTBOUND DIRECTION

TIME OF DAY	FLOWS AND CAPACITY IN VEH/HR						AVERAGE SPEEDS IN MPH			
	MAIN ROUTE		SITE CAPA CITY	FLOW		AV.DEL PER VEH (MINS)	AVERAGE QUEUE (VEH)	MAIN ROUTE		SITE
	DEMAND FLOW	PCT HEAVY		MAIN ROUTE	'DIVER TED'			WITHOUT WORK ZONE	WITH WORK ZONE	
MID-1 AM	419	0.0	1500	419	0	0.52	0	70.2	60.7	43.8
1-2 AM	222	0.0	1500	222	0	0.50	0	70.2	61.0	44.6
2-3 AM	172	0.0	1500	172	0	0.49	0	70.2	61.1	44.8
3-4 AM	100	0.0	1500	100	0	0.48	0	70.2	61.3	45.1
4-5 AM	130	0.0	1500	130	0	0.49	0	70.2	61.2	45.0
5-6 AM	238	0.0	1500	238	0	0.50	0	70.2	61.0	44.5
6-7 AM	472	0.0	1500	472	0	0.53	0	70.2	60.5	43.6
7-8 AM	758	0.0	1500	758	0	0.56	0	69.8	59.8	42.5
8-9 AM	1152	0.0	1499	1152	0	0.68	0	69.3	57.7	39.2
9-10 AM	1505	0.0	OFF	1505	0	0.00	0	68.9	68.9	68.9
10-11 AM	2040	0.0	OFF	2040	0	0.00	0	68.2	68.2	68.2
11AM-NOON	2448	0.0	OFF	2448	0	0.00	0	67.7	67.7	67.7
NOON-1PM	2438	0.0	OFF	2438	0	0.00	0	67.7	67.7	67.7
1-2 PM	2561	0.0	OFF	2561	0	0.00	0	67.6	67.6	67.6
2-3 PM	2177	0.0	OFF	2177	0	0.00	0	68.0	68.0	68.0
3-4 PM	2597	0.0	OFF	2597	0	0.00	0	67.5	67.5	67.5
4-5 PM	2498	0.0	OFF	2498	0	0.00	0	67.6	67.6	67.6
5-6 PM	2074	0.0	OFF	2074	0	0.00	0	68.2	68.2	68.2
6-7 PM	1663	0.0	OFF	1663	0	0.00	0	68.7	68.7	68.7
7-8 PM	1279	0.0	1500	1279	0	0.81	0	69.1	55.8	36.1
8-9 PM	861	0.0	1500	861	0	0.57	0	69.7	59.6	42.2
9-10 PM	778	0.0	1500	778	0	0.56	0	69.7	59.7	42.5
10-11 PM	563	0.0	1500	563	0	0.54	0	70.0	60.3	43.3
11PM-MID	384	0.0	1500	384	0	0.52	0	70.2	60.7	44.0

**"OFF" INDICATES NO ROAD WORK (ALL LANES OPEN TO TRAFFIC)**

*----- SITE BREAKDOWN DELAYS -----*	
BREAKDOWN DURATION (MINS)	0
RANGE OF QUEUE DELAY - MIN (VEH-H) MAX	0.0
AV BREAKDOWNS PER DAY	0.00
AV QUEUE DELAY/DAY (VEH-H)	0.0
AV TOTAL DELAY/DAY (VEH-H)	0.0

*----- SITE ACCIDENT DELAYS -----*	
BREAKDOWN DURATION (MINS)	0
RANGE OF QUEUE DELAY - MIN (VEH-H) MAX	0
AV BREAKDOWNS PER DAY	0
AV QUEUE DELAY/DAY (VEH-H)	0
AV TOTAL DELAY/DAY (VEH-H)	0

AVERAGE ACCIDENT NUMBERS (PIA/DAY)	
MAIN ROUTE WITHOUT WORKS	0.0183
MAIN ROUTE WITH WORKS	0.0178
'DIVERSION'	0.0000
<small>PIA: Personal Injury Accidents</small>	
IMPACTS ON ROAD USERS	
ROAD USER COSTS PER DAY	\$1,266
CONGESTED HOURS PER DAY*	0

\*Delays Exceeding User-Specified Maximum

**IH 94: CTH G TO STH 16 (WAUKESHA COUNTY)  
 NIGHTTIME 2 LANE CLOSURE  
 NO DIVERSION ROUTE (MAX QUEUE METHOD)**

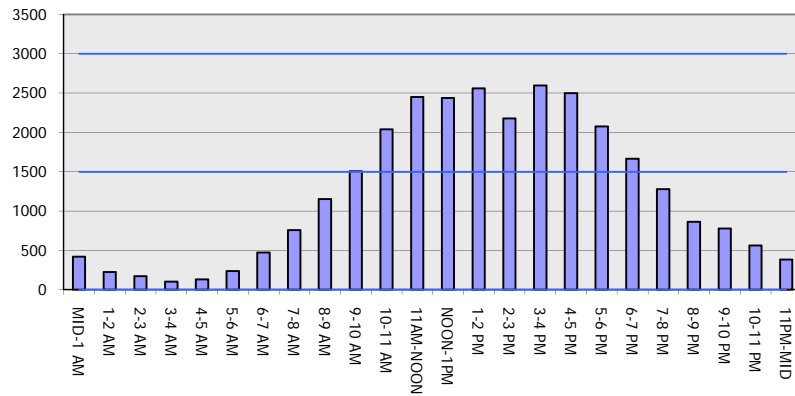
**OCTOBER**

Analyzed for 2009  
 Construction Season

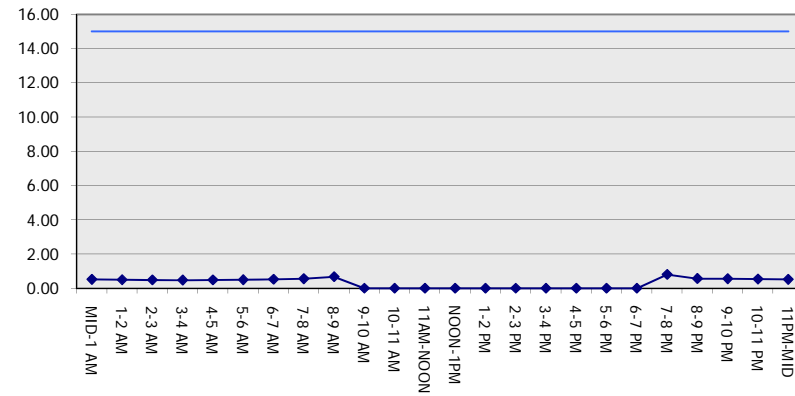
**GRAPHICAL REPRESENTATION OF TRAFFIC MODEL INPUT AND OUTPUT**

**SUNDAY WESTBOUND DIRECTION**

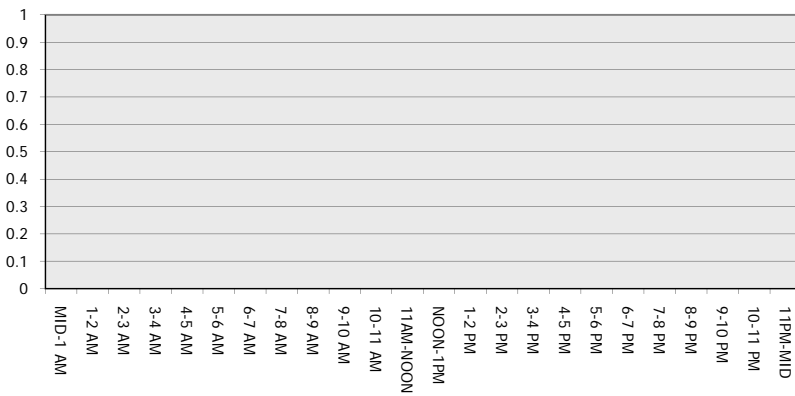
**Main Route - Traffic Demand (Vehicles Per Hour)**



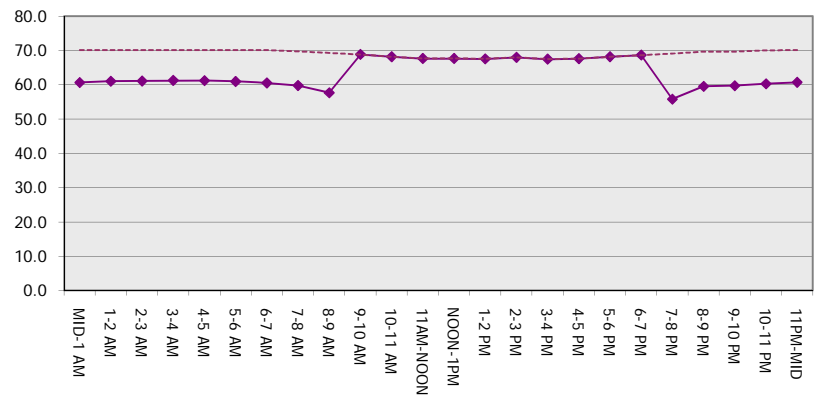
**Main Route Average Delay Per Vehicle (Minutes)**



**Main Route - Average Queue Length (Vehicles)**



**Main Route - Average Speed (MPH)**



<b>IH 94: CTH G TO STH 16 (WAUKESHA COUNTY)                  NIGHTTIME 2 LANE CLOSURE                  NO DIVERSION ROUTE (MAX QUEUE METHOD)</b>	<b>OCTOBER</b>
	Analyzed for 2009 Construction Season

**SUMMARY OF TRAFFIC MODEL OUTPUT**

SUNDAY EASTBOUND DIRECTION

TIME OF DAY	FLOWS AND CAPACITY IN VEH/HR						AVERAGE SPEEDS IN MPH			
	MAIN ROUTE		SITE CAPA CITY	FLOW		AV.DEL PER VEH (MINS)	AVERAGE QUEUE (VEH)	MAIN ROUTE		SITE
	DEMAND FLOW	PCT HEAVY		MAIN ROUTE	'DIVER TED'			WITHOUT WORK ZONE	WITH WORK ZONE	
MID-1 AM	392	0.0	1500	392	0	0.52	0	70.2	60.7	43.9
1-2 AM	244	0.0	1500	244	0	0.50	0	70.2	61.0	44.5
2-3 AM	168	0.0	1500	168	0	0.49	0	70.2	61.1	44.8
3-4 AM	137	0.0	1500	137	0	0.49	0	70.2	61.2	45.0
4-5 AM	195	0.0	1500	195	0	0.50	0	70.2	61.1	44.7
5-6 AM	236	0.0	1500	236	0	0.50	0	70.2	61.0	44.5
6-7 AM	387	0.0	1500	387	0	0.52	0	70.2	60.7	44.0
7-8 AM	545	0.0	1500	545	0	0.54	0	70.0	60.4	43.3
8-9 AM	1035	0.0	1499	1035	0	0.61	0	69.4	58.7	40.9
9-10 AM	1524	0.0	OFF	1524	0	0.00	0	68.9	68.9	68.9
10-11 AM	2119	0.0	OFF	2119	0	0.00	0	68.1	68.1	68.1
11AM-NOON	2652	0.0	OFF	2652	0	0.00	0	67.4	67.4	67.4
NOON-1PM	2590	0.0	OFF	2590	0	0.00	0	67.5	67.5	67.5
1-2 PM	2564	0.0	OFF	2564	0	0.00	0	67.6	67.6	67.6
2-3 PM	2678	0.0	OFF	2678	0	0.00	0	67.4	67.4	67.4
3-4 PM	3064	0.0	OFF	3064	0	0.00	0	66.9	66.9	66.9
4-5 PM	3398	0.0	OFF	3398	0	0.00	0	66.5	66.5	66.5
5-6 PM	3108	0.0	OFF	3108	0	0.00	0	66.9	66.9	66.9
6-7 PM	2382	0.0	OFF	2382	0	0.00	0	67.8	67.8	67.8
7-8 PM	1826	0.0	1499	1826	0	7.61	192	68.4	21.2	30.8
8-9 PM	1438	0.0	1499	1438	0	13.33	321	68.9	14.0	30.8
9-10 PM	986	0.0	1499	986	0	2.46	83	69.5	40.2	38.7
10-11 PM	610	0.0	1500	610	0	0.54	0	70.0	60.2	43.1
11PM-MID	380	0.0	1500	380	0	0.52	0	70.2	60.7	44.0

"OFF" INDICATES NO ROAD WORK (ALL LANES OPEN TO TRAFFIC)

*----- SITE BREAKDOWN DELAYS -----*	
BREAKDOWN DURATION (MINS)	0
RANGE OF QUEUE DELAY - MIN (VEH-H) MAX	0.0
AV BREAKDOWNS PER DAY	0.00
AV QUEUE DELAY/DAY (VEH-H)	0.0
AV TOTAL DELAY/DAY (VEH-H)	0.0

*----- SITE ACCIDENT DELAYS -----*	
BREAKDOWN DURATION (MINS)	0
RANGE OF QUEUE DELAY - MIN (VEH-H) MAX	0
AV BREAKDOWNS PER DAY	0
AV QUEUE DELAY/DAY (VEH-H)	0
AV TOTAL DELAY/DAY (VEH-H)	0

AVERAGE ACCIDENT NUMBERS (PIA/DAY)	
MAIN ROUTE WITHOUT WORKS	0.0215
MAIN ROUTE WITH WORKS	0.0210
'DIVERSION'	0.0000

PIA: Personal Injury Accidents

ECONOMIC IMPACT ON ROAD USERS	
ROAD USER COSTS PER DAY	\$10,482
CONGESTED HOURS PER DAY*	0

\*Delays Exceeding User-Specified Maximum

**IH 94: CTH G TO STH 16 (WAUKESHA COUNTY)  
 NIGHTTIME 2 LANE CLOSURE  
 NO DIVERSION ROUTE (MAX QUEUE METHOD)**

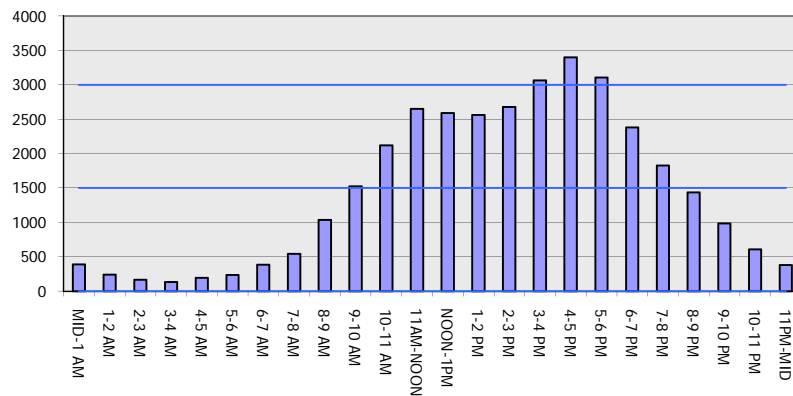
**OCTOBER**

Analyzed for 2009  
 Construction Season

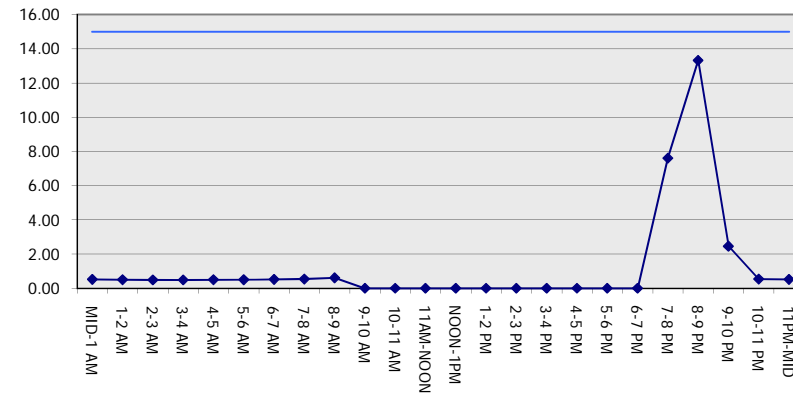
**GRAPHICAL REPRESENTATION OF TRAFFIC MODEL INPUT AND OUTPUT**

**SUNDAY EASTBOUND DIRECTION**

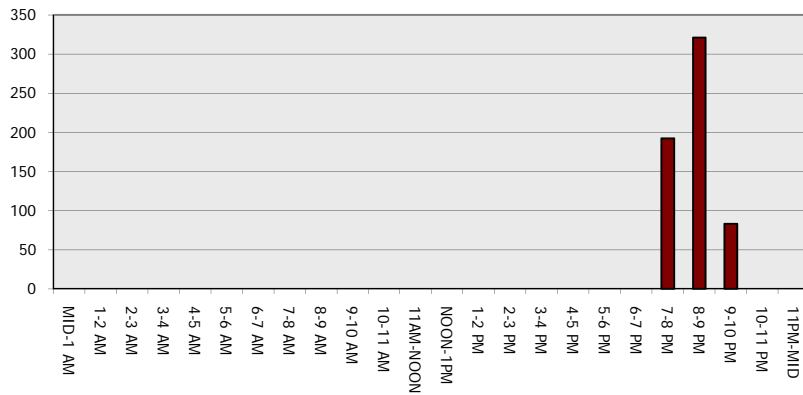
**Main Route - Traffic Demand (Vehicles Per Hour)**



**Main Route Average Delay Per Vehicle (Minutes)**



**Main Route - Average Queue Length (Vehicles)**



**Main Route - Average Speed (MPH)**

