

IH 94: CTH G TO STH 16 (WAUKESHA COUNTY) NIGHTTIME 2 LANE CLOSURE NO DIVERSION ROUTE (MAX QUEUE METHOD)	OCTOBER
	Analyzed for 2009 Construction Season

SUMMARY OF TRAFFIC MODEL OUTPUT

SATURDAY WESTBOUND DIRECTION

TIME OF DAY	FLOWS AND CAPACITY IN VEH/HR							AVERAGE SPEEDS IN MPH			
	MAIN ROUTE		SITE CAPA CITY	FLOW		AV.DEL PER VEH (MINS)	AVERAGE QUEUE (VEH)	MAIN ROUTE		SITE	
	DEMAND FLOW	PCT HEAVY		MAIN ROUTE	'DIVER TED'			WITHOUT WORK ZONE	WITH WORK ZONE		
MID-1 AM	444	0.0	1500	444	0	0.53	0	70.2	60.6	43.7	
1-2 AM	254	0.0	1500	254	0	0.50	0	70.2	61.0	44.5	
2-3 AM	230	0.0	1500	230	0	0.50	0	70.2	61.0	44.6	
3-4 AM	227	0.0	1500	227	0	0.50	0	70.2	61.0	44.6	
4-5 AM	280	0.0	1500	280	0	0.51	0	70.2	60.9	44.3	
5-6 AM	542	0.0	1500	542	0	0.54	0	70.0	60.4	43.3	
6-7 AM	1163	0.0	1499	1163	0	0.79	0	69.3	56.1	36.9	
7-8 AM	2856	0.0	1499	1973	883	12.59+	318	67.2	14.5	30.8	
8-9 AM	4447	0.0	OFF	4447	0	0.94	71	60.5	48.7	48.7	
9-10 AM	2829	0.0	OFF	2829	0	0.00	0	67.2	67.2	67.2	
10-11 AM	2506	0.0	OFF	2506	0	0.00	0	67.6	67.6	67.6	
11AM-NOON	2386	0.0	OFF	2386	0	0.00	0	67.8	67.8	67.8	
NOON-1PM	2570	0.0	OFF	2570	0	0.00	0	67.6	67.6	67.6	
1-2 PM	2470	0.0	OFF	2470	0	0.00	0	67.7	67.7	67.7	
2-3 PM	2518	0.0	OFF	2518	0	0.00	0	67.6	67.6	67.6	
3-4 PM	2646	0.0	OFF	2646	0	0.00	0	67.4	67.4	67.4	
4-5 PM	2470	0.0	OFF	2470	0	0.00	0	67.7	67.7	67.7	
5-6 PM	2076	0.0	OFF	2076	0	0.00	0	68.1	68.1	68.1	
6-7 PM	1771	0.0	1499	1771	0	6.40	156	68.6	23.8	30.8	
7-8 PM	1407	0.0	1499	1407	0	10.43	246	69.0	17.0	30.8	
8-9 PM	1065	0.0	1500	1065	0	1.63	40	69.4	46.8	39.4	
9-10 PM	1066	0.0	1500	1066	0	0.59	0	69.4	59.0	41.4	
10-11 PM	1073	0.0	1500	1073	0	0.59	0	69.4	59.0	41.4	
11PM-MID	653	0.0	1500	653	0	0.55	0	69.9	60.1	42.9	

"OFF" INDICATES NO ROAD WORK (ALL LANES OPEN TO TRAFFIC)

+ INDICATES QUEUEING EXCEEDS USER-SPECIFIED MAXIMUM LIMIT

----- SITE BREAKDOWN DELAYS -----	
BREAKDOWN DURATION (MINS)	0
RANGE OF QUEUE DELAY - MIN (VEH-H) MAX	0.0
AV BREAKDOWNS PER DAY	0.00
AV QUEUE DELAY/DAY (VEH-H)	0.0
AV TOTAL DELAY/DAY (VEH-H)	0.0

----- SITE ACCIDENT DELAYS -----	
BREAKDOWN DURATION (MINS)	0
RANGE OF QUEUE DELAY - MIN (VEH-H) MAX	0
AV BREAKDOWNS PER DAY	0
AV QUEUE DELAY/DAY (VEH-H)	0
AV TOTAL DELAY/DAY (VEH-H)	0

AVERAGE ACCIDENT NUMBERS (PIA/DAY)	
MAIN ROUTE WITHOUT WORKS	0.0248
MAIN ROUTE WITH WORKS	0.0235
'DIVERSION'	0.0013
<small>PIA: Personal Injury Accidents</small>	
IMPACTS ON ROAD USERS	
ROAD USER COSTS PER DAY	\$17,254
CONGESTED HOURS PER DAY*	1

*Delays Exceeding User-Specified Maximum

**IH 94: CTH G TO STH 16 (WAUKESHA COUNTY)
NIGHTTIME 2 LANE CLOSURE
NO DIVERSION ROUTE (MAX QUEUE METHOD)**

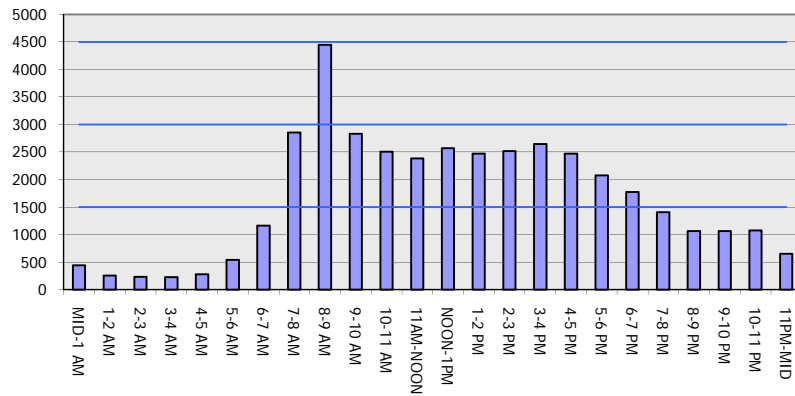
OCTOBER

Analyzed for 2009
Construction Season

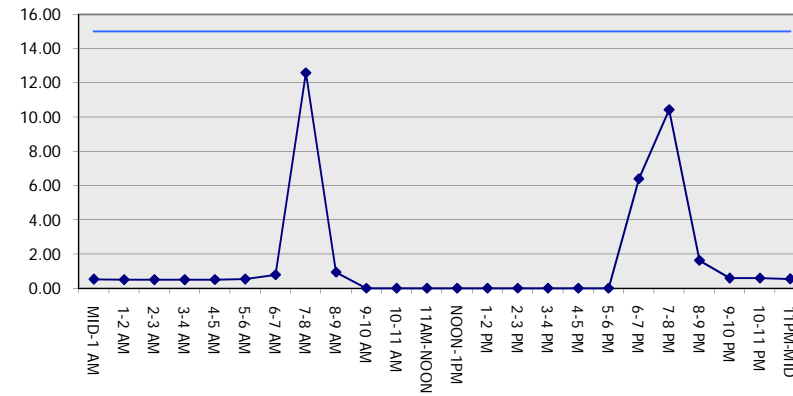
GRAPHICAL REPRESENTATION OF TRAFFIC MODEL INPUT AND OUTPUT

SATURDAY WESTBOUND DIRECTION

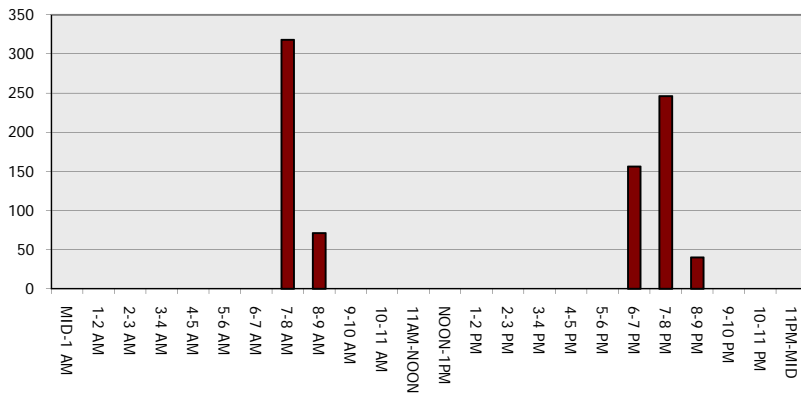
Main Route - Traffic Demand (Vehicles Per Hour)



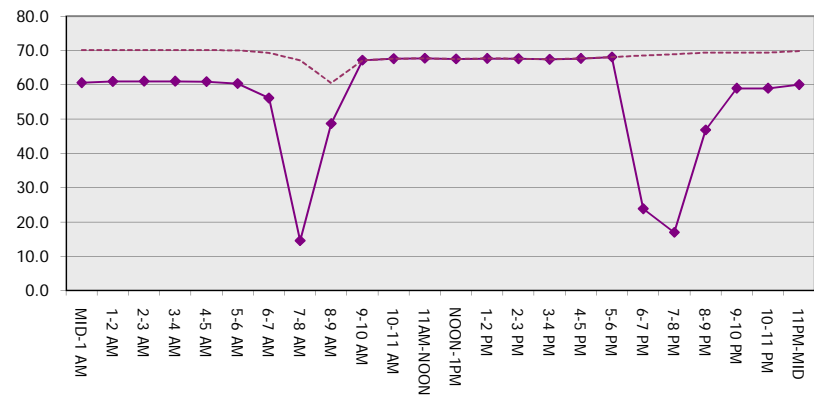
Main Route Average Delay Per Vehicle (Minutes)



Main Route - Average Queue Length (Vehicles)



Main Route - Average Speed (MPH)



IH 94: CTH G TO STH 16 (WAUKESHA COUNTY) NIGHTTIME 2 LANE CLOSURE NO DIVERSION ROUTE (MAX QUEUE METHOD)	OCTOBER
	Analyzed for 2009 Construction Season

SUMMARY OF TRAFFIC MODEL OUTPUT

SATURDAY EASTBOUND DIRECTION

TIME OF DAY	FLOWS AND CAPACITY IN VEH/HR							AVERAGE SPEEDS IN MPH		
	MAIN ROUTE		SITE CAPA CITY	FLOW		AV.DEL PER VEH (MINS)	AVERAGE QUEUE (VEH)	MAIN ROUTE		SITE
	DEMAND FLOW	PCT HEAVY		MAIN ROUTE	'DIVER TED'			WITHOUT WORK ZONE	WITH WORK ZONE	
MID-1 AM	378	0.0	1500	378	0	0.52	0	70.2	60.7	44.0
1-2 AM	234	0.0	1500	234	0	0.50	0	70.2	61.0	44.5
2-3 AM	206	0.0	1500	206	0	0.50	0	70.2	61.0	44.6
3-4 AM	165	0.0	1500	165	0	0.49	0	70.2	61.2	44.8
4-5 AM	258	0.0	1500	258	0	0.50	0	70.2	61.0	44.5
5-6 AM	434	0.0	1500	434	0	0.53	0	70.2	60.6	43.8
6-7 AM	773	0.0	1500	773	0	0.56	0	69.8	59.7	42.5
7-8 AM	1032	0.0	1499	1032	0	0.59	0	69.4	59.1	41.5
8-9 AM	1489	0.0	OFF	1489	0	0.00	0	68.9	68.9	68.9
9-10 AM	1875	0.0	OFF	1875	0	0.00	0	68.4	68.4	68.4
10-11 AM	2159	0.0	OFF	2159	0	0.00	0	68.1	68.1	68.1
11AM-NOON	2306	0.0	OFF	2306	0	0.00	0	67.9	67.9	67.9
NOON-1PM	2433	0.0	OFF	2433	0	0.00	0	67.7	67.7	67.7
1-2 PM	2431	0.0	OFF	2431	0	0.00	0	67.7	67.7	67.7
2-3 PM	2477	0.0	OFF	2477	0	0.00	0	67.6	67.6	67.6
3-4 PM	3463	0.0	OFF	3463	0	0.00	0	66.4	66.4	66.4
4-5 PM	3838	0.0	OFF	3838	0	0.00	0	64.6	64.6	64.6
5-6 PM	3448	0.0	OFF	3448	0	0.00	0	66.4	66.4	66.4
6-7 PM	2678	0.0	1499	1650	1028	14.24+	361	67.4	13.2	35.9
7-8 PM	1843	0.0	1499	1752	91	13.47+	337	68.4	13.8	30.8
8-9 PM	1395	0.0	1499	1395	0	15.09+	368	69.0	12.7	30.8
9-10 PM	1235	0.0	1499	1235	0	7.11	180	69.2	22.3	32.7
10-11 PM	865	0.0	1500	865	0	0.60	0	69.7	59.1	42.2
11PM-MID	630	0.0	1500	630	0	0.55	0	69.9	60.1	43.0

"OFF" INDICATES NO ROAD WORK (ALL LANES OPEN TO TRAFFIC)

+ INDICATES QUEUEING EXCEEDS USER-SPECIFIED MAXIMUM LIMIT

BREAKDOWN DURATION (MINS)	0
RANGE OF QUEUE DELAY - MIN (VEH-H) MAX	0.0
AV BREAKDOWNS PER DAY	0.00
AV QUEUE DELAY/DAY (VEH-H)	0.0
AV TOTAL DELAY/DAY (VEH-H)	0.0

BREAKDOWN DURATION (MINS)	0
RANGE OF QUEUE DELAY - MIN (VEH-H) MAX	0
AV BREAKDOWNS PER DAY	0
AV QUEUE DELAY/DAY (VEH-H)	0
AV TOTAL DELAY/DAY (VEH-H)	0

MAIN ROUTE WITHOUT WORKS	0.0236
MAIN ROUTE WITH WORKS	0.0222
'DIVERSION'	0.0016

PIA: Personal Injury Accidents

ROAD USER COSTS PER DAY	\$23,075
CONGESTED HOURS PER DAY*	3

*Delays Exceeding User-Specified Maximum

**IH 94: CTH G TO STH 16 (WAUKESHA COUNTY)
 NIGHTTIME 2 LANE CLOSURE
 NO DIVERSION ROUTE (MAX QUEUE METHOD)**

OCTOBER

Analyzed for 2009
 Construction Season

GRAPHICAL REPRESENTATION OF TRAFFIC MODEL INPUT AND OUTPUT
SATURDAY EASTBOUND DIRECTION

