

IH 94: CTH G TO STH 16 (WAUKESHA COUNTY) NIGHTTIME 2 LANE CLOSURE NO DIVERSION ROUTE (MAX QUEUE METHOD)	OCTOBER
	Analyzed for 2009 Construction Season

SUMMARY OF TRAFFIC MODEL OUTPUT

MON-THUR WESTBOUND DIRECTION

TIME OF DAY	FLOWS AND CAPACITY IN VEH/HR						AVERAGE SPEEDS IN MPH				
	MAIN ROUTE		SITE CAPA CITY	FLOW		AV.DEL PER VEH (MINS)	AVERAGE QUEUE (VEH)	MAIN ROUTE		SITE	
	DEMAND FLOW	PCT HEAVY		MAIN ROUTE	'DIVER TED'			WITHOUT WORK ZONE	WITH WORK ZONE		
MID-1 AM	266	0.0	1500	266	0	0.50	0	70.2	60.9	44.4	
1-2 AM	183	0.0	1500	183	0	0.49	0	70.2	61.1	44.8	
2-3 AM	150	0.0	1500	150	0	0.49	0	70.2	61.2	44.9	
3-4 AM	208	0.0	1500	208	0	0.50	0	70.2	61.0	44.6	
4-5 AM	354	0.0	1500	354	0	0.52	0	70.2	60.8	44.1	
5-6 AM	773	0.0	OFF	773	0	0.00	0	69.8	69.8	69.8	
6-7 AM	1737	0.0	OFF	1737	0	0.00	0	68.6	68.6	68.6	
7-8 AM	2330	0.0	OFF	2330	0	0.00	0	67.8	67.8	67.8	
8-9 AM	2259	0.0	OFF	2259	0	0.00	0	67.9	67.9	67.9	
9-10 AM	1866	0.0	OFF	1866	0	0.00	0	68.4	68.4	68.4	
10-11 AM	1818	0.0	OFF	1818	0	0.00	0	68.5	68.5	68.5	
11AM-NOON	1959	0.0	OFF	1959	0	0.00	0	68.3	68.3	68.3	
NOON-1PM	2134	0.0	OFF	2134	0	0.00	0	68.1	68.1	68.1	
1-2 PM	2168	0.0	OFF	2168	0	0.00	0	68.1	68.1	68.1	
2-3 PM	2630	0.0	OFF	2630	0	0.00	0	67.4	67.4	67.4	
3-4 PM	3319	0.0	OFF	3319	0	0.00	0	66.6	66.6	66.6	
4-5 PM	3870	0.0	OFF	3870	0	0.00	0	64.4	64.4	64.4	
5-6 PM	3718	0.0	OFF	3718	0	0.00	0	65.5	65.5	65.5	
6-7 PM	2408	0.0	OFF	2408	0	0.00	0	67.8	67.8	67.8	
7-8 PM	1526	0.0	1499	1526	0	2.99	50	68.8	36.6	31.2	
8-9 PM	1194	0.0	1500	1194	0	0.74	1	69.2	56.8	38.7	
9-10 PM	1034	0.0	1500	1034	0	0.59	0	69.4	59.1	41.5	
10-11 PM	740	0.0	1500	740	0	0.56	0	69.8	59.9	42.6	
11PM-MID	496	0.0	1500	496	0	0.53	0	70.1	60.5	43.5	

"OFF" INDICATES NO ROAD WORK (ALL LANES OPEN TO TRAFFIC)

----- SITE BREAKDOWN DELAYS -----	
BREAKDOWN DURATION (MINS)	0
RANGE OF QUEUE DELAY - MIN (VEH-H) MAX	0.0
AV BREAKDOWNS PER DAY	0.00
AV QUEUE DELAY/DAY (VEH-H)	0.0
AV TOTAL DELAY/DAY (VEH-H)	0.0

----- SITE ACCIDENT DELAYS -----	
BREAKDOWN DURATION (MINS)	0
RANGE OF QUEUE DELAY - MIN (VEH-H) MAX	0
AV BREAKDOWNS PER DAY	0
AV QUEUE DELAY/DAY (VEH-H)	0
AV TOTAL DELAY/DAY (VEH-H)	0

AVERAGE ACCIDENT NUMBERS (PIA/DAY)	
MAIN ROUTE WITHOUT WORKS	0.0243
MAIN ROUTE WITH WORKS	0.0239
'DIVERSION'	0.0000
PIA: Personal Injury Accidents	
IMPACTS ON ROAD USERS	
ROAD USER COSTS PER DAY	\$1,531
CONGESTED HOURS PER DAY*	0

*Delays Exceeding User-Specified Maximum

**IH 94: CTH G TO STH 16 (WAUKESHA COUNTY)
NIGHTTIME 2 LANE CLOSURE
NO DIVERSION ROUTE (MAX QUEUE METHOD)**

OCTOBER

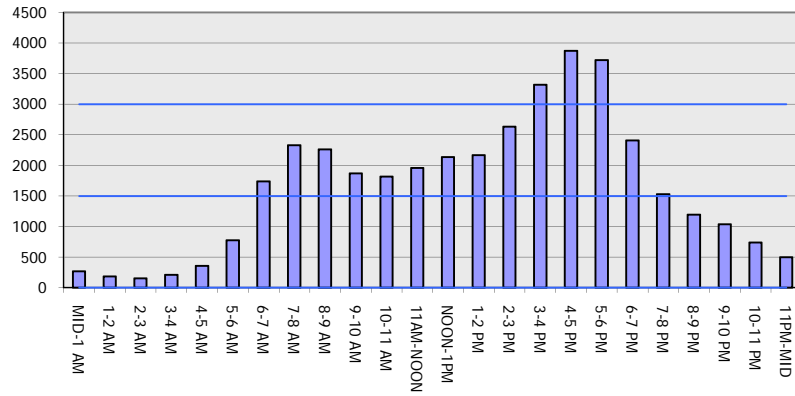
Analyzed for 2009
Construction Season

GRAPHICAL REPRESENTATION OF TRAFFIC MODEL INPUT AND OUTPUT

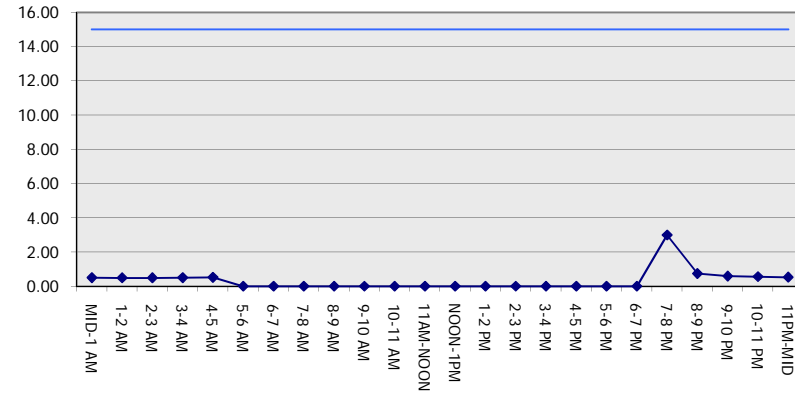
MON-THUR

WESTBOUND DIRECTION

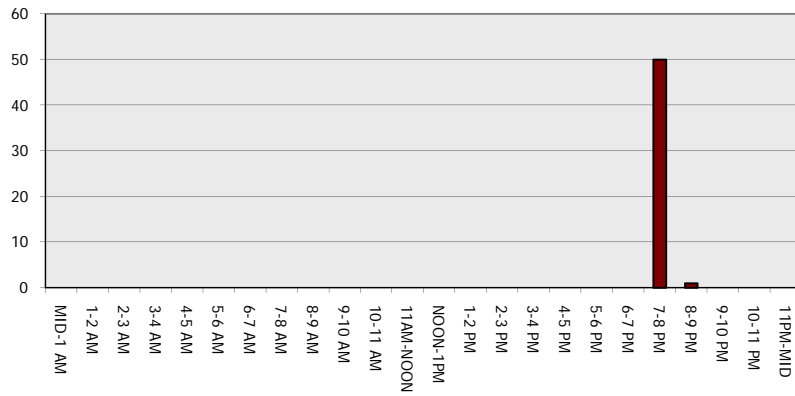
Main Route - Traffic Demand (Vehicles Per Hour)



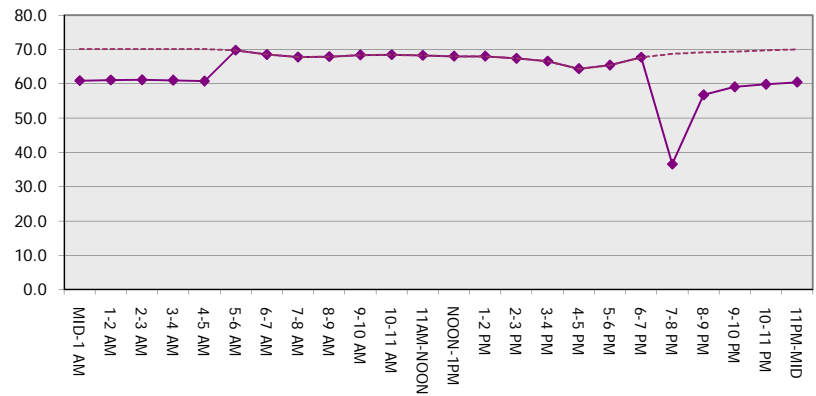
Main Route Average Delay Per Vehicle (Minutes)



Main Route - Average Queue Length (Vehicles)



Main Route - Average Speed (MPH)



IH 94: CTH G TO STH 16 (WAUKESHA COUNTY) NIGHTTIME 2 LANE CLOSURE NO DIVERSION ROUTE (MAX QUEUE METHOD)	OCTOBER
	Analyzed for 2009 Construction Season

SUMMARY OF TRAFFIC MODEL OUTPUT

MON-THUR EASTBOUND DIRECTION

TIME OF DAY	FLOWS AND CAPACITY IN VEH/HR						AVERAGE SPEEDS IN MPH			
	MAIN ROUTE		SITE CAPA CITY	FLOW		AV.DEL PER VEH (MINS)	AVERAGE QUEUE (VEH)	MAIN ROUTE		SITE
	DEMAND FLOW	PCT HEAVY		MAIN ROUTE	'DIVER TED'			WITHOUT WORK ZONE	WITH WORK ZONE	
MID-1 AM	194	0.0	1500	194	0	0.50	0	70.2	61.1	44.7
1-2 AM	167	0.0	1500	167	0	0.49	0	70.2	61.2	44.8
2-3 AM	163	0.0	1500	163	0	0.49	0	70.2	61.2	44.8
3-4 AM	187	0.0	1500	187	0	0.50	0	70.2	61.1	44.7
4-5 AM	501	0.0	1500	501	0	0.53	0	70.1	60.4	43.5
5-6 AM	1380	0.0	OFF	1380	0	0.00	0	69.0	69.0	69.0
6-7 AM	2946	0.0	OFF	2946	0	0.00	0	67.1	67.1	67.1
7-8 AM	3978	0.0	OFF	3978	0	0.00	0	63.7	63.7	63.7
8-9 AM	3055	0.0	OFF	3055	0	0.00	0	66.9	66.9	66.9
9-10 AM	2210	0.0	OFF	2210	0	0.00	0	68.0	68.0	68.0
10-11 AM	1911	0.0	OFF	1911	0	0.00	0	68.4	68.4	68.4
11AM-NOON	1933	0.0	OFF	1933	0	0.00	0	68.3	68.3	68.3
NOON-1PM	1983	0.0	OFF	1983	0	0.00	0	68.2	68.2	68.2
1-2 PM	2072	0.0	OFF	2072	0	0.00	0	68.2	68.2	68.2
2-3 PM	2212	0.0	OFF	2212	0	0.00	0	68.0	68.0	68.0
3-4 PM	2407	0.0	OFF	2407	0	0.00	0	67.8	67.8	67.8
4-5 PM	2611	0.0	OFF	2611	0	0.00	0	67.5	67.5	67.5
5-6 PM	2650	0.0	OFF	2650	0	0.00	0	67.4	67.4	67.4
6-7 PM	1818	0.0	OFF	1818	0	0.00	0	68.5	68.5	68.5
7-8 PM	1128	0.0	1500	1128	0	0.61	0	69.3	58.7	40.9
8-9 PM	973	0.0	1500	973	0	0.58	0	69.6	59.2	41.8
9-10 PM	856	0.0	1500	856	0	0.57	0	69.7	59.6	42.2
10-11 PM	653	0.0	1500	653	0	0.55	0	69.9	60.1	42.9
11PM-MID	399	0.0	1500	399	0	0.52	0	70.2	60.7	43.9

"OFF" INDICATES NO ROAD WORK (ALL LANES OPEN TO TRAFFIC)

----- SITE BREAKDOWN DELAYS -----	
BREAKDOWN DURATION (MINS)	0
RANGE OF QUEUE DELAY - MIN (VEH-H) MAX	0.0
AV BREAKDOWNS PER DAY	0.00
AV QUEUE DELAY/DAY (VEH-H)	0.0
AV TOTAL DELAY/DAY (VEH-H)	0.0

----- SITE ACCIDENT DELAYS -----	
BREAKDOWN DURATION (MINS)	0
RANGE OF QUEUE DELAY - MIN (VEH-H) MAX	0
AV BREAKDOWNS PER DAY	0
AV QUEUE DELAY/DAY (VEH-H)	0
AV TOTAL DELAY/DAY (VEH-H)	0

AVERAGE ACCIDENT NUMBERS (PIA/DAY)	
MAIN ROUTE WITHOUT WORKS	0.0238
MAIN ROUTE WITH WORKS	0.0235
'DIVERSION'	0.0000

PIA: Personal Injury Accidents

ECONOMIC IMPACT ON ROAD USERS	
ROAD USER COSTS PER DAY	\$612
CONGESTED HOURS PER DAY*	0

*Delays Exceeding User-Specified Maximum

**IH 94: CTH G TO STH 16 (WAUKESHA COUNTY)
 NIGHTTIME 2 LANE CLOSURE
 NO DIVERSION ROUTE (MAX QUEUE METHOD)**

OCTOBER

Analyzed for 2009
 Construction Season

GRAPHICAL REPRESENTATION OF TRAFFIC MODEL INPUT AND OUTPUT

MON-THUR EASTBOUND DIRECTION

