

IH 94: CTH G TO STH 16 (WAUKESHA COUNTY) NIGHTTIME CLOSURE NO DIVERSION ROUTE (MAX QUEUE METHOD)	AUGUST
	Analyzed for 2009 Construction Season

SUMMARY OF TRAFFIC MODEL OUTPUT

SUNDAY WESTBOUND DIRECTION

TIME OF DAY	FLOWS AND CAPACITY IN VEH/HR						AVERAGE SPEEDS IN MPH			
	MAIN ROUTE		SITE CAPA CITY	FLOW		AV.DEL PER VEH (MINS)	AVERAGE QUEUE (VEH)	MAIN ROUTE		SITE
	DEMAND FLOW	PCT HEAVY		MAIN ROUTE	'DIVER TED'			WITHOUT WORK ZONE	WITH WORK ZONE	
MID-1 AM	661	0.0	3000	661	0	0.36	0	69.9	63.2	49.7
1-2 AM	320	0.0	3000	320	0	0.36	0	70.2	63.3	49.7
2-3 AM	207	0.0	3000	207	0	0.36	0	70.2	63.3	49.7
3-4 AM	140	0.0	3000	140	0	0.36	0	70.2	63.3	49.7
4-5 AM	130	0.0	3000	130	0	0.36	0	70.2	63.3	49.7
5-6 AM	241	0.0	3000	241	0	0.36	0	70.2	63.3	49.7
6-7 AM	538	0.0	3000	538	0	0.36	0	70.0	63.3	49.7
7-8 AM	920	0.0	3000	920	0	0.35	0	69.6	63.0	49.7
8-9 AM	1493	0.0	3000	1493	0	0.34	0	68.9	62.5	49.7
9-10 AM	1924	0.0	OFF	1924	0	0.00	0	68.4	68.4	68.4
10-11 AM	2526	0.0	OFF	2526	0	0.00	0	67.6	67.6	67.6
11AM-NOON	2892	0.0	OFF	2892	0	0.00	0	67.1	67.1	67.1
NOON-1PM	2961	0.0	OFF	2961	0	0.00	0	67.1	67.1	67.1
1-2 PM	2764	0.0	OFF	2764	0	0.00	0	67.3	67.3	67.3
2-3 PM	2995	0.0	OFF	2995	0	0.00	0	67.0	67.0	67.0
3-4 PM	2837	0.0	OFF	2837	0	0.00	0	67.2	67.2	67.2
4-5 PM	2716	0.0	OFF	2716	0	0.00	0	67.4	67.4	67.4
5-6 PM	2308	0.0	OFF	2308	0	0.00	0	67.9	67.9	67.9
6-7 PM	1927	0.0	OFF	1927	0	0.00	0	68.3	68.3	68.3
7-8 PM	1714	0.0	3000	1714	0	0.34	0	68.6	62.4	49.7
8-9 PM	1328	0.0	3000	1328	0	0.35	0	69.1	62.7	49.7
9-10 PM	1160	0.0	3000	1160	0	0.35	0	69.3	62.8	49.7
10-11 PM	754	0.0	3000	754	0	0.35	0	69.8	63.1	49.7
11PM-MID	490	0.0	3000	490	0	0.36	0	70.1	63.3	49.7

"OFF" INDICATES NO ROAD WORK (ALL LANES OPEN TO TRAFFIC)

----- SITE BREAKDOWN DELAYS -----	
BREAKDOWN DURATION (MINS)	0
RANGE OF QUEUE DELAY - MIN (VEH-H) MAX	0.0
AV BREAKDOWNS PER DAY	0.00
AV QUEUE DELAY/DAY (VEH-H)	0.0
AV TOTAL DELAY/DAY (VEH-H)	0.0

----- SITE ACCIDENT DELAYS -----	
BREAKDOWN DURATION (MINS)	0
RANGE OF QUEUE DELAY - MIN (VEH-H) MAX	0
AV BREAKDOWNS PER DAY	0
AV QUEUE DELAY/DAY (VEH-H)	0
AV TOTAL DELAY/DAY (VEH-H)	0

AVERAGE ACCIDENT NUMBERS (PIA/DAY)	
MAIN ROUTE WITHOUT WORKS	0.0223
MAIN ROUTE WITH WORKS	0.0217
'DIVERSION'	0.0000
<small>PIA: Personal Injury Accidents</small>	
IMPACTS ON ROAD USERS	
ROAD USER COSTS PER DAY	\$825
CONGESTED HOURS PER DAY*	0

*Delays Exceeding User-Specified Maximum

**IH 94: CTH G TO STH 16 (WAUKESHA COUNTY)
NIGHTTIME CLOSURE
NO DIVERSION ROUTE (MAX QUEUE METHOD)**

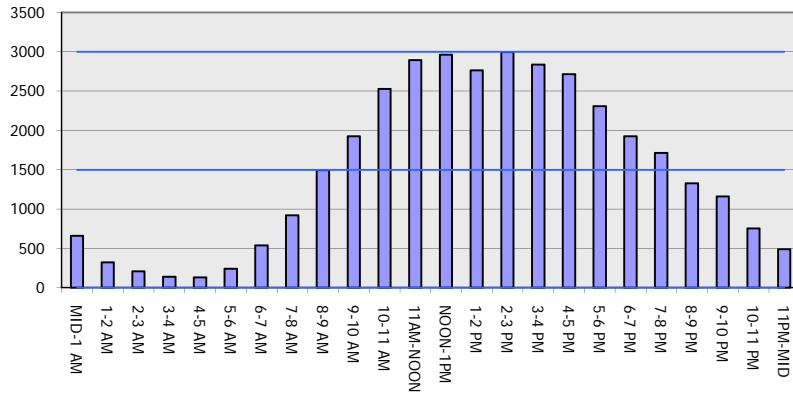
AUGUST

Analyzed for 2009
Construction Season

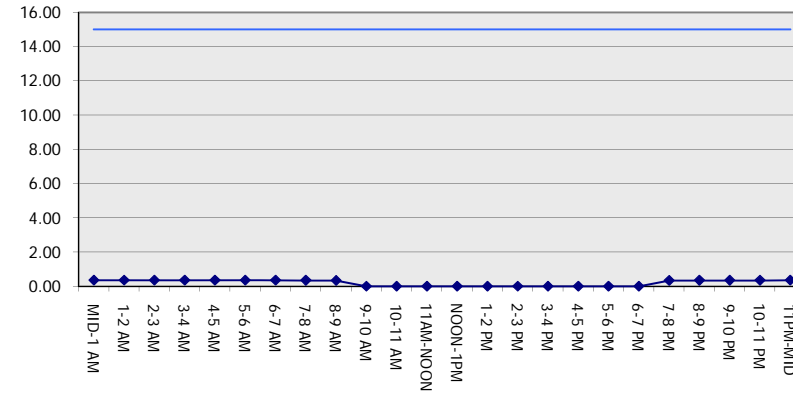
GRAPHICAL REPRESENTATION OF TRAFFIC MODEL INPUT AND OUTPUT

SUNDAY WESTBOUND DIRECTION

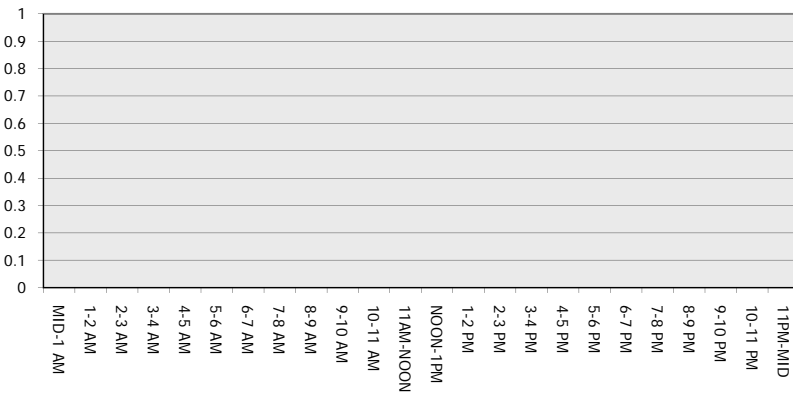
Main Route - Traffic Demand (Vehicles Per Hour)



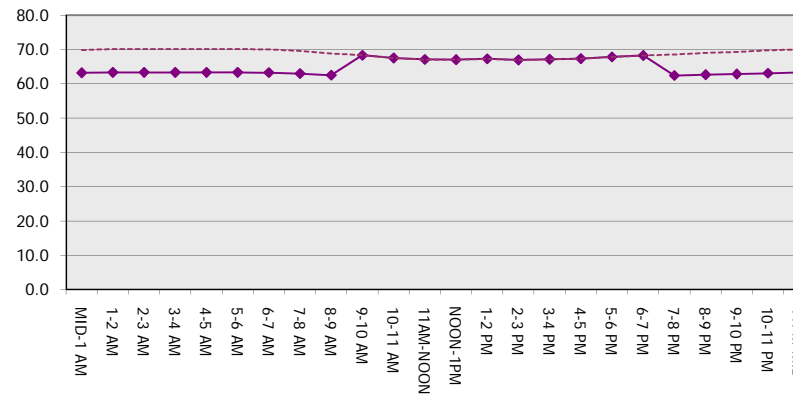
Main Route Average Delay Per Vehicle (Minutes)



Main Route - Average Queue Length (Vehicles)



Main Route - Average Speed (MPH)



IH 94: CTH G TO STH 16 (WAUKESHA COUNTY) NIGHTTIME CLOSURE NO DIVERSION ROUTE (MAX QUEUE METHOD)	AUGUST
	Analyzed for 2009 Construction Season

SUMMARY OF TRAFFIC MODEL OUTPUT

SUNDAY EASTBOUND DIRECTION

TIME OF DAY	FLOWS AND CAPACITY IN VEH/HR						AVERAGE SPEEDS IN MPH			
	MAIN ROUTE		SITE CAPA CITY	FLOW		AV.DEL PER VEH (MINS)	AVERAGE QUEUE (VEH)	MAIN ROUTE		SITE
	DEMAND FLOW	PCT HEAVY		MAIN ROUTE	'DIVER TED'			WITHOUT WORK ZONE	WITH WORK ZONE	
MID-1 AM	818	0.0	3000	818	0	0.35	0	69.7	63.1	49.7
1-2 AM	519	0.0	3000	519	0	0.36	0	70.1	63.3	49.7
2-3 AM	300	0.0	3000	300	0	0.36	0	70.2	63.3	49.7
3-4 AM	195	0.0	3000	195	0	0.36	0	70.2	63.3	49.7
4-5 AM	240	0.0	3000	240	0	0.36	0	70.2	63.3	49.7
5-6 AM	238	0.0	3000	238	0	0.36	0	70.2	63.3	49.7
6-7 AM	376	0.0	3000	376	0	0.36	0	70.2	63.3	49.7
7-8 AM	558	0.0	3000	558	0	0.36	0	70.0	63.3	49.7
8-9 AM	1008	0.0	3000	1008	0	0.35	0	69.5	62.9	49.7
9-10 AM	1622	0.0	OFF	1622	0	0.00	0	68.7	68.7	68.7
10-11 AM	2367	0.0	OFF	2367	0	0.00	0	67.8	67.8	67.8
11AM-NOON	2961	0.0	OFF	2961	0	0.00	0	67.1	67.1	67.1
NOON-1PM	3285	0.0	OFF	3285	0	0.00	0	66.6	66.6	66.6
1-2 PM	3378	0.0	OFF	3378	0	0.00	0	66.5	66.5	66.5
2-3 PM	3288	0.0	OFF	3288	0	0.00	0	66.6	66.6	66.6
3-4 PM	3387	0.0	OFF	3387	0	0.00	0	66.5	66.5	66.5
4-5 PM	3465	0.0	OFF	3465	0	0.00	0	66.4	66.4	66.4
5-6 PM	3354	0.0	OFF	3354	0	0.00	0	66.6	66.6	66.6
6-7 PM	2930	0.0	OFF	2930	0	0.00	0	67.1	67.1	67.1
7-8 PM	2893	0.0	3000	2893	0	0.66	0	67.1	56.4	38.9
8-9 PM	2660	0.0	3000	2660	0	0.51	0	67.4	58.9	43.3
9-10 PM	1750	0.0	3000	1750	0	0.34	0	68.6	62.3	49.7
10-11 PM	1159	0.0	3000	1159	0	0.35	0	69.3	62.8	49.7
11PM-MID	579	0.0	3000	579	0	0.36	0	70.0	63.3	49.7

"OFF" INDICATES NO ROAD WORK (ALL LANES OPEN TO TRAFFIC)

----- SITE BREAKDOWN DELAYS -----	
BREAKDOWN DURATION (MINS)	0
RANGE OF QUEUE DELAY - MIN (VEH-H) MAX	0.0
AV BREAKDOWNS PER DAY	0.00
AV QUEUE DELAY/DAY (VEH-H)	0.0
AV TOTAL DELAY/DAY (VEH-H)	0.0

----- SITE ACCIDENT DELAYS -----	
BREAKDOWN DURATION (MINS)	0
RANGE OF QUEUE DELAY - MIN (VEH-H) MAX	0
AV BREAKDOWNS PER DAY	0
AV QUEUE DELAY/DAY (VEH-H)	0
AV TOTAL DELAY/DAY (VEH-H)	0

AVERAGE ACCIDENT NUMBERS (PIA/DAY)	
MAIN ROUTE WITHOUT WORKS	0.0269
MAIN ROUTE WITH WORKS	0.0260
'DIVERSION'	0.0000

PIA: Personal Injury Accidents

ECONOMIC IMPACT ON ROAD USERS	
ROAD USER COSTS PER DAY	\$1,400
CONGESTED HOURS PER DAY*	0

*Delays Exceeding User-Specified Maximum

**IH 94: CTH G TO STH 16 (WAUKESHA COUNTY)
NIGHTTIME CLOSURE
NO DIVERSION ROUTE (MAX QUEUE METHOD)**

AUGUST
Analyzed for 2009
Construction Season

GRAPHICAL REPRESENTATION OF TRAFFIC MODEL INPUT AND OUTPUT
SUNDAY EASTBOUND DIRECTION

